

If earthen pits are used in association with the drilling of this well, an OCD pit permit must be obtained prior to pit construction.

S

ATS-07-342

Form 3160-3
(April 2004)

NOV 27 2007

UNITED STATES
DEPARTMENT OF THE INTERIOR
BUREAU OF LAND MANAGEMENT

OCD-ARTESIA

APPLICATION FOR PERMIT TO DRILL OR REENTER

FORM APPROVED
OMB No 1004-0137
Expires March 31, 2007

5. Lease Serial No

LC-028784-B

6. If Indian, Allottee or Tribe Name

7. If Unit or CA Agreement, Name and No.

NM-70954-X Grayburg Deep Unit

8. Lease Name and Well No.

Grayburg Deep Unit No. 23

9. API Well No

30-015- 35926

10. Field and Pool, or Exploratory

Loco Hills; Wolfcamp, Northeast

11. Sec, T R M. or Blk. and Survey or Area

24-17S-29E

12. County or Parish

Eddy

13. State

NM

1a Type of Work: ☒ DRILL ☐ REENTER

1b Type of Well. ☒ Oil Well ☐ Gas Well ☐ Other ☒ Single Zone ☐ Multiple Zone

2. Name of Operator

Cimarex Energy Co. of Colorado

3a Address
PO Box 140907
Irving, TX 75014

3b. Phone No (include area code)
972-401-3111

4 Location of Well (Report location clearly and in accordance with any State requirements. *)

At Surface 330' FSL & 1310' FWL

At proposed prod Zone 330' FSL & 1310' FWL

UNORTHODOX
LOCATION

14. Distance in miles and direction from nearest town or post office*

2 miles NW of Loco Hills

15 Distance from proposed*

location to nearest
property or lease line, ft.
(Also to nearest drig unit line if
any) 20'

16. No of acres in lease

1264.52

18 Distance from proposed location*
to nearest well, drilling, completed,
applied for, on this lease, ft

N/A

19 Proposed Depth

9,350'

21. Elevations (Show whether DF, KDB, RT, GL, etc.)

3576' GR

22 Approximate date work will start*

12/1/2007

23 Estimated duration

30-35 days

24. Attachments

The following, completed in accordance with the requirements of Onshore Oil and Gas Order No. 1, shall be attached to this form:

1 Well plat certified by a registered surveyor

2 A Drilling Plan

3. A Surface Use Plan (if the location is on National Forest System Lands, the
SUPO shall be filed with the appropriate Forest Service Office).

4. Bond to cover the operations unless covered by an existing bond on file (see
Item 20 above).

5 Operator Certification

6. Such other site specific information and/or plans as may be required by the
authorized officer.

25. Signature

Zeno Farris

Name (Printed/Typed)

Zeno Farris

Date

09.20.07

Title

Manager Operations Administration

Approved By (Signature)

/s/ James A. Amos

Name (Printed/Typed)

/s/ James A. Amos

Date

NOV 23 2007

Title

FOR

FIELD MANAGER

Office

CARLSBAD FIELD OFFICE

Application approval does not warrant or certify that the applicant holds legal or equitable title to those rights in the subject lease which would entitle the applicant to
conduct operations thereon.

APPROVAL FOR TWO YEARS

Conditions of approval, if any, are attached.

Title 18 U.S.S. Section 1001 and Title 43 U.S.C. Section 1212, make it a crime for any person knowingly and willfully to make to any department or agency of the United
States any false, fictitious, or fraudulent statements or representations as to any matter within its jurisdiction.

Roswell Controlled Water Basin

NSL - 5713

SEE ATTACHED FOR
CONDITIONS OF APPROVAL

APPROVAL SUBJECT TO
GENERAL REQUIREMENTS
AND SPECIAL STIPULATIONS
ATTACHED

DISTRICT I
1625 N. French Dr., Hobbs, NM 88240

DISTRICT II
1301 W. Grand Avenue, Artesia, NM 88210

DISTRICT III
1000 Rio Brazos Rd., Aztec, NM 87410

DISTRICT IV
1220 S. St. Francis Dr., Santa Fe, NM 87506

State of New Mexico
Energy, Minerals and Natural Resources Department

Form C-102
Revised October 12, 2005

Submit to Appropriate District Office
State Lease - 4 Copies
Fee Lease - 3 Copies

OIL CONSERVATION DIVISION
1220 South St. Francis Dr.
Santa Fe, New Mexico 87505

☐ AMENDED REPORT

WELL LOCATION AND ACREAGE DEDICATION PLAT

API Number 30-015-35926	Pool Code 97601	Pool Name Loco Hills; Wolfcamp, Northeast
Property Code 35766	Property Name GRAYBURG DEEP UNIT	Well Number 23
OGRID No. 162683	Operator Name CIMAREX ENERGY CO. OF COLORADO	Elevation 3576'

Surface Location

UL or lot No.	Section	Township	Range	Lot Idn	Feet from the	North/South line	Feet from the	East/West line	County
M	24	17 S	29 E		330	SOUTH	1310	WEST	EDDY

Bottom Hole Location If Different From Surface

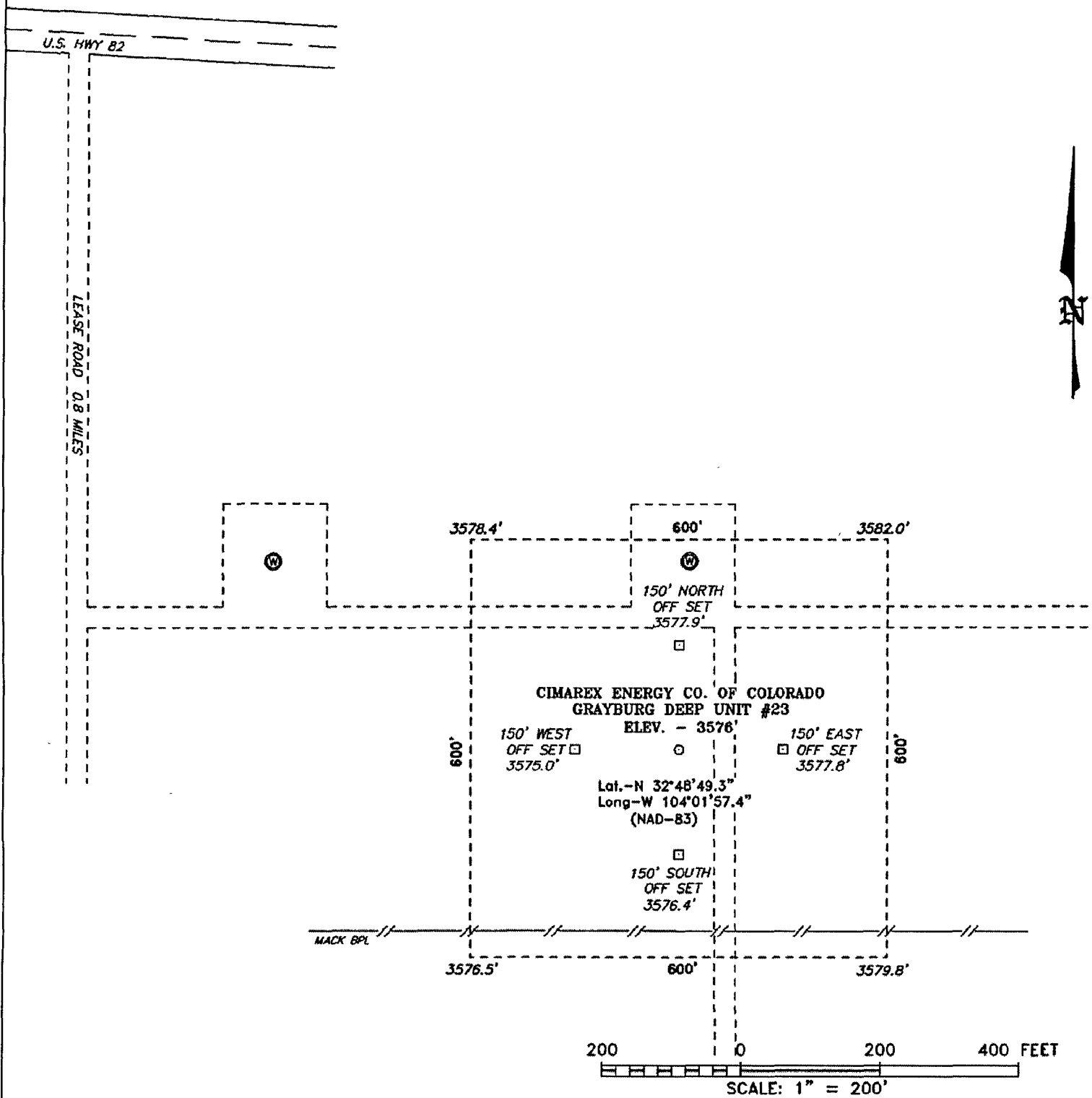
UL or lot No.	Section	Township	Range	Lot Idn	Feet from the	North/South line	Feet from the	East/West line	County

Dedicated Acres 40	Joint or Infill	Consolidation Code U	Order No. NSL Pending
------------------------------	-----------------	--------------------------------	---------------------------------

**NO ALLOWABLE WILL BE ASSIGNED TO THIS COMPLETION UNTIL ALL INTERESTS HAVE BEEN CONSOLIDATED
OR A NON-STANDARD UNIT HAS BEEN APPROVED BY THE DIVISION**

<p>Lot - N32°48'49.3" Long - W104°01'57.4" NMPCE - N 659885.807 E 633727.830 (NAD-83)</p> <p>LC-028784-B</p> <p>3578.4' 3582.0' 1310' 3576.5' 3579.8'</p> <p>Grayburg Deep Unit #23</p>	<p>OPERATOR CERTIFICATION</p> <p>I hereby certify that the information contained herein is true and complete to the best of my knowledge and belief, and that this organization either owns a working interest or unleased mineral interest in the land including the proposed bottom hole location pursuant to a contract with an owner of such a mineral or working interest, or to a voluntary pooling agreement or a compulsory pooling order heretofore entered by the division.</p> <p><u>Zeno Farris</u> 09-20-07 Signature Date</p> <p>Zeno Farris Printed Name</p>
	<p>SURVEYOR CERTIFICATION</p> <p>I hereby certify that the well location shown on this plat was plotted from field notes of actual surveys made by me or under my supervision, and that the same is true and correct to the best of my belief.</p> <p>APR 12 2007 Date Surveyed</p> <p><u>Gary L. Jones</u> Signature Professional Surveyor</p> <p>7977 Certificate No.</p> <p>7977 Date</p> <p>BASIN SURVEYS</p>

SECTION 24, TOWNSHIP 17 SOUTH, RANGE 29 EAST, N.M.P.M.,
EDDY COUNTY, NEW MEXICO.



Directions to Location:

FROM MILE MARKER 129 ON U.S. HWY 82, GO WEST 0.3 MILES TO LEASE ROAD, ON LEASE ROAD GO SOUTH 0.4 MILES TO LEASE ROAD AND MARBOB #233, THENCE 0.5 MILES EAST ON LEASE ROAD TO PROPOSED LOCATION.

BASIN SURVEYS P.O. BOX 1786—HOBBS, NEW MEXICO

W.O. Number: 18019

Drawn By: J. M. SMALL

Date: 04-13-2007	Disk: JMS 18019W
------------------	------------------

CIMAREX ENERGY CO. OF COLORADO

REF: GRAYBURG DEEP UNIT #23 / WELL PAD TOPO

THE GRAYBURG DEEP UNIT #23 LOCATED 330' FROM
THE SOUTH LINE AND 1310' FROM THE WEST LINE OF
SECTION 24, TOWNSHIP 17 SOUTH, RANGE 29 EAST,
N.M.P.M., EDDY COUNTY, NEW MEXICO.

Survey Date: 04-12-2007

Sheet 1 of 1 Sheets

Application to Drill
Cimarex Energy Co. of Colorado
Grayburg Deep Unit No. 23
Unit M Section 24
T17S R29E Eddy County, NM

In response to questions asked under Section II B of Bulletin NTL-6, the following information is provided for your consideration:

- 1 Location: SHL 330' FSL & 1310' FWL

- 2 Elevation above sea level: 3576' GR

- 3 Geologic name of surface formation: Quaternary Alluvium Deposits

- 4 Drilling tools and associated equipment: Conventional rotary drilling rig using fluid as a circulating medium for solids removal.

- 5 Proposed drilling depth: 9,350'

- 6 Estimated tops of geological markers:
Queen 1,976'
Grayburg 2,375'
San Andres 2,718'
Glorieta 4,175'
Yeso 4,280'
Tubb 5,282'
Wolfcamp 7,675'

- 7 Possible mineral bearing formation:
Wolfcamp Oil Primary

8 Proposed Mud Circulating System:

Depth	Mud Wt	Visc	Fluid Loss	Type Mud
0' to 375'	8.4 - 8.6	28	May lose circ	FW spud mud
375' to 4,700'	10.0	28-31	May lose circ	brine water
4,700' to 9,350'	9.0 - 10.0	28-36	NC	FW/brine, maintain clear fluid as long as possible, use hi-vis sweeps to keep hole clean

Sufficient mud materials will be kept on location at all times in order to combat lost circulation or unexpected kicks. In order to run DSTs, open hole logs, and casing, the viscosity and water loss may have to be adjusted in order to meet these needs. Mud system monitoring equipment with derrick floor indicators and visual/audio alarms shall be installed and operative prior to drilling into the Wolfcamp formation. This equipment will remain in use until production casing is run and cemented.

Application to Drill
Cimarex Energy Co. of Colorado
Grayburg Deep Unit No. 23
Unit M Section 24
T17S R29E Eddy County, NM

9 Casing & Cementing Program:

Hole Size	Depth			Casing OD		Weight	Thread	Collar	Grade
17-1/2	0	to	375'	New	13-3/8	48#	8-R	STC	H-40
11	0	to	4,700'	New	8-5/8	32#	8-R	LTC	J-55
7-7/8	0	to	9,350'	New	5-1/2	17#	8-R	LTC	N-80

10 Cementing & Setting Depth:

13-3/8 **Surface** Set 375' of 13-3/8 48# H-40 STC
Lead: 134 sx Lite Premium Plus + 0.125# Poly-e-flake + 1% CaCl (wt 14.2, yld 1.64)
Tail: 220 sx Premium Plus + 2% CaCl (wt 14.8, yld 1.34)
TOC Surface

8-5/8 **Intermediate** Set 4,700' of 8-5/8 32# J-55 LTC
Stage 1
Lead: 733 sx Interfill C + 0.125# Poly-e-flake (wt 11.9, yld 2.45)
Tail: 200 sx Premium Plus + 1% CaCl (wt 14.8, yld 1.33)
TOC Surface

5-1/2 **Production** Set 9,350' of 5-1/2 17# N-80 LTC
Lead: 305 sx Super H + 0.5% Halad-344 + 0.4% CFR-3 + 1# Salt + 5# Gilsonite + 0.125#
Poly-e-flake + 0.35% HR-7 (wt 11.6, yld 2.79)
Tail: 311 sx Super H + 0.5% Halad-344 + 0.4% CFR-3 + 1# Salt + 5# Gilsonite + 0.125#
Poly-e-flake + 0.35% HR-7 (wt 13.0, yld 1.67)
TOC 4500'

Fresh water will be protected by setting 13-3/8 casing at 375' and cementing to Surface
Hydrocarbon zones will be protected by setting 8-5/8 casing at 4,700' and cementing to Surface
and by setting 5-1/2 casing at 9,350' and cementing to 4500'

Cimarex uses the following minimum safety factors:

Burst	Collapse	Tension
1.125	1.0	1.80

Application to Drill
Cimarex Energy Co. of Colorado
Grayburg Deep Unit No. 23
Unit M Section 24
T17S R29E Eddy County, NM

11 Pressure control Equipment:

Exhibit "E". A 13 3/8" 5000 PSI working pressure B.O.P. consisting of one set of blind rams and one set of pipe rams and a 5000 # annular type preventer. A choke manifold and 120 gallon accumulator with floor and remote operating stations and auxiliary power system. Rotating head below 6000'. A kelly cock will be installed and maintained in operable condition and a drill string safety valve in the open position will be available on the rig floor.

BOP unit will be hydraulically operated. BOP will be nipped up on the 8-5/8" casing and will be operated at least once a day while drilling and the blind rams will be operated when out of hole during trips. No abnormal pressure or temperature is expected while drilling. From the base of the surface pipe through the running of production casing, the well will be equipped with a 5000 psi BOP system.

We are requesting a variance for testing the 13-3/8" surface casing from Onshore Order No. 2, which states that all casing strings below the conductor shall be pressure tested to 0.22 psi per foot or 1500 psi, whichever is greater, but not to exceed 70% of the manufacturer's stated maximum internal yield. We are requesting to test the 13-3/8" casing to 1000 psi using rig pumps. The BOP will be tested to 5000 PSI by an independent service company.

12 Testing, Logging and Coring Program:

- A. Mud logging program: 2 man unit from 4700' to TD
- B. Electric logging program: CNL / LDT / CAL / GR, DLL / CAL / GR
- C. No DSTs are planned at this time.

13 Potential Hazards:

No abnormal pressures or temperatures are expected. The area has a potential H2S hazard. An H2S drilling plan is attached. Adequate flare lines will be installed off the mud / gas separator where gas may be flared safely. All personnel will be familiar with all aspects of safe operation of equipment being used.

Estimated BHP **4000 psi** Estimated BHT **175**

14 Road and location construction will begin after BLM approval of APD. Anticipated spud date as soon as approved.

Drilling expected to take 30-35 days

If production casing is run an additional 30 days will be required to complete and construct surface facilities.

15 Other Facets of Operations:

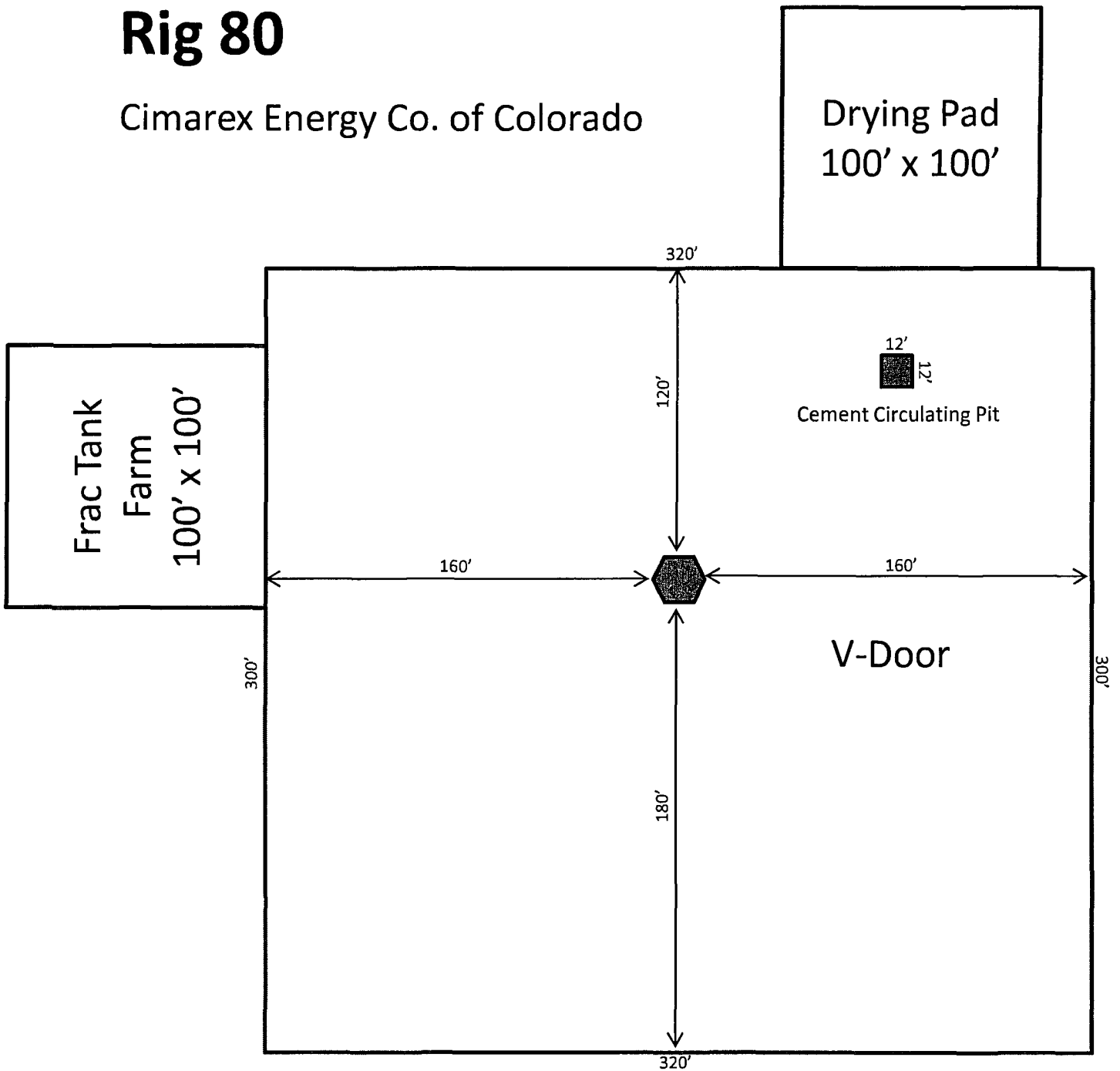
After running casing, cased hole gamma ray neutron collar logs will be run from total depth over possible pay intervals.

Wolfcamp pay will be perforated and stimulated.

The proposed well will be tested and potential as **an oil well**

Rig 80

Cimarex Energy Co. of Colorado



*See COA
V-Door North*

Exhibit D – Rig Layout
Grayburg Deep Unit No. 23
Cimarex Energy Co. of Colorado
330' FSL & 1310' FWL
24-17S-29E
Eddy County, NM

SR & A

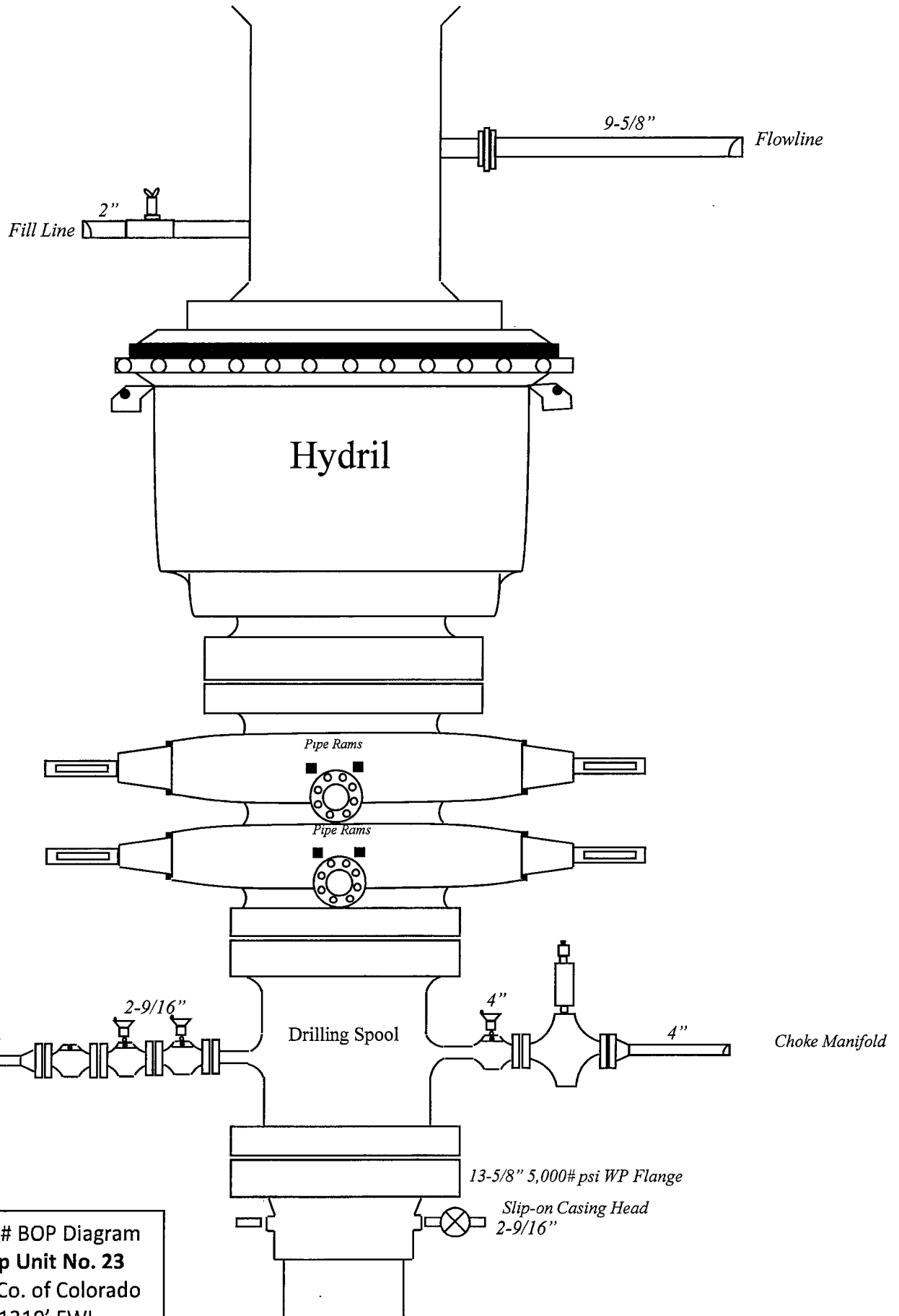


Exhibit E – 5000# BOP Diagram
Grayburg Deep Unit No. 23
 Cimarex Energy Co. of Colorado
 330' FSL & 1310' FWL
 24-17S-29E
 Eddy County, NM

**DRILLING OPERATIONS
CHOKE MANIFOLD
5M SERVICE**

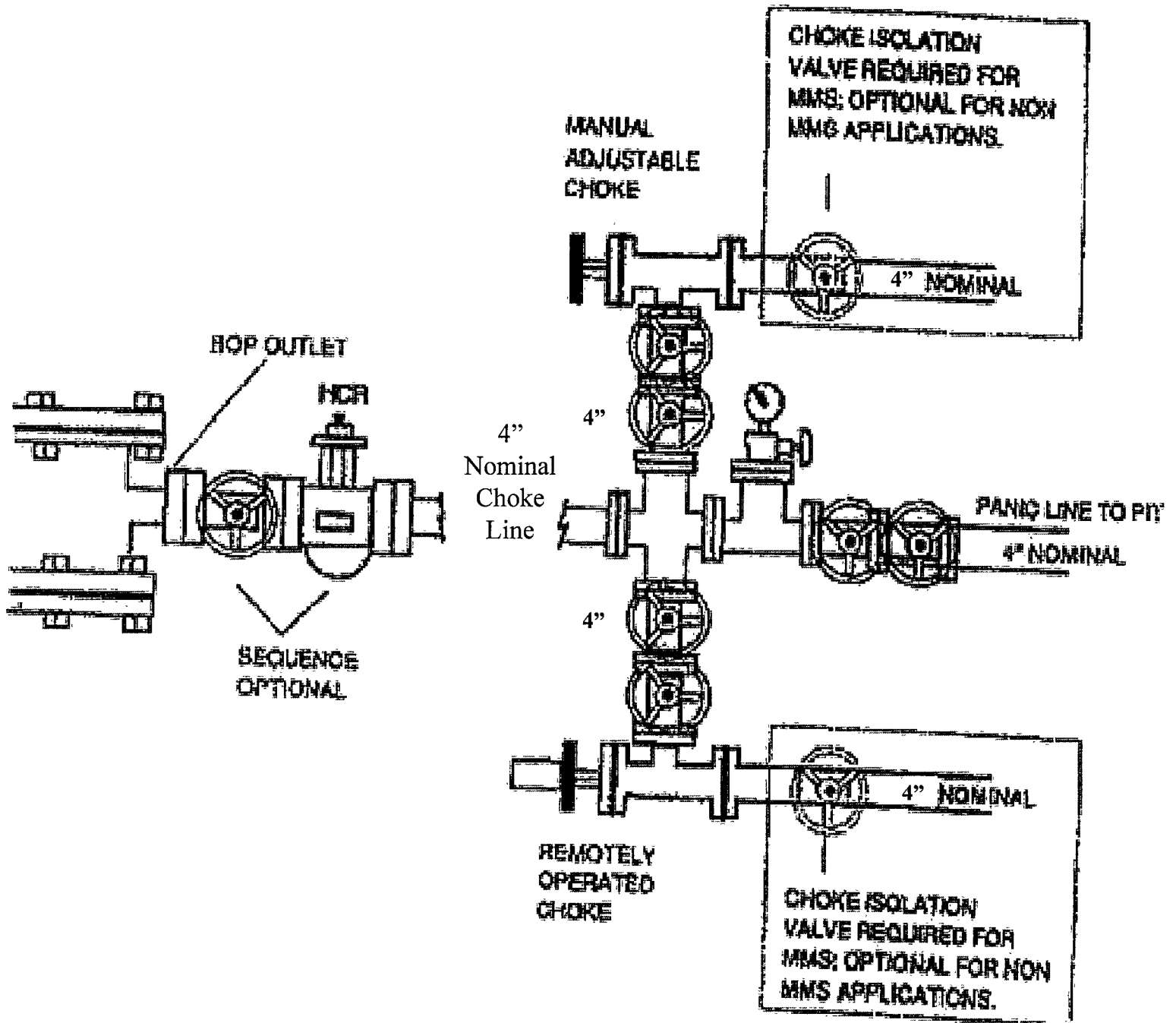


Exhibit E-1 – Choke Manifold Diagram
Grayburg Deep Unit No. 23
 Cimarex Energy Co. of Colorado
 330' FSL & 1310' FWL
 24-17S-29E
 Eddy County, NM

Hydrogen Sulfide Drilling Operations Plan
Cimarex Energy Co. of Colorado
Grayburg Deep Unit No. 23
Unit M Section 24
T17S R29E Eddy County, NM

- 1 All Company and Contract personnel admitted on location must be trained by a qualified H2S safety instructor to the following:
 - A. Characteristics of H2S
 - B. Physical effects and hazards
 - C. Proper use of safety equipment and life support systems.
 - D. Principle and operation of H2S detectors, warning system and briefing areas.
 - E. Evacuation procedure, routes and first aid.
 - F. Proper use of 30 minute pressure demand air pack.

- 2 H2S Detection and Alarm Systems
 - A. H2S detectors and audio alarm system to be located at bell nipple, end of flow line (mud pit) and on derrick floor or doghouse.

- 3 Windsock and/or wind streamers
 - A. Windsock at mudpit area should be high enough to be visible.
 - B. Windsock at briefing area should be high enough to be visible.

- 4 Condition Flags and Signs
 - A. Warning sign on access road to location.
 - B. Flags to be displayed on sign at entrance to location. Green flag indicates normal safe condition. Yellow flag indicates potential pressure and danger. Red flag indicates danger (H2S present in dangerous concentration). Only emergency personnel admitted to location.

- 5 Well control equipment
 - A. e

- 6 Communication
 - A. While working under masks chalkboards will be used for communication.
 - B. Hand signals will be used where chalk board is inappropriate.
 - C. Two way radio will be used to communicate off location in case of emergency help is required. In most cases cellular telephones will be available at most drilling foreman's trailer or living quarters.

- 7 Drillstem Testing

No DSTs are planned at this time.

- 8 Drilling contractor supervisor will be required to be familiar with the effects H2S has on tubular goods and other mechanical equipment.

- 9 If H2S is encountered, mud system will be altered if necessary to maintain control of formation. A mud gas separator will be brought into service along with H2S scavengers if necessary.

Surface Use Plan
Cimarex Energy Co. of Colorado
Grayburg Deep Unit No. 23
Unit M Section 24
T17S R29E Eddy County, NM

- 1 Existing Roads: Area maps, Exhibit "B" is a reproduction of Eddy Co. General Highway Map. Exhibit "C" is a reproduction of a USGS Topographic Map, showing existing roads and proposed roads. All existing roads will be maintained in a condition equal to or better than current conditions. Any new roads will be constructed to BLM specifications.
 - A. Exhibit "A" shows the proposed well site as staked.
 - B. From Mile Marker 129 on Us Hwy 82, go West 0.3 miles to lease road. On lease road, go South 0.4 miles to lease road and Marbob #233; thence 0.5 miles on lease road to proposed location.
- 2 Planned Access Roads: No new access roads will be constructed.
- 3 Location of Existing Wells in a One-Mile Radius - Exhibit A
 - A. Water wells - None known
 - B. Disposal wells - None known
 - C. Drilling wells - None known
 - D. Producing wells - As shown on Exhibit "A"
 - E. Abandoned wells - As shown on Exhibit "A"

Surface Use Plan
Cimarex Energy Co. of Colorado
Grayburg Deep Unit No. 23
Unit M Section 24
T17S R29E Eddy County, NM

- 4 If on completion this well is a producer, Cimarex Energy Co. of Colorado will furnish maps and/or plats showing on site facilities or off site facilities if needed. This will be accompanied by a Sundry Notice.
- 5 Location and Type of Water Supply
Water will be purchased locally from a commercial source and trucked over the access roads or piped in flexible lines laid on top of the ground.
- 6 Source of Construction Material
If possible, construction will be obtained from the excavation of drill site. If additional material is needed, it will be purchased from a local source and transported over the access route as shown on Exhibit "C".
- 7 Methods of Handling Waste Material
 - A. Drill cuttings will be separated by a series of solids removal equipment and hauled to the cuttings drying area and then disposed of in the cuttings burial cell.
 - B. All trash, junk and other waste material will be contained in trash cages or bins to prevent scattering. When the job is completed all contents will be removed and disposed of in an approved sanitary land fill.
 - C. Salts remaining after completion of well will be picked up by supplier including broken sacks.
 - D. Sewage from living quarters will drain into holding tanks and be cleaned out periodically. A Porta-John will be provided for the rig crews. This equipment will be properly maintained during the drilling operations and removed upon completion of the well.
 - E. Drilling fluids will be contained in steel pits in a closed circulating system. Fluids will be cleaned and reused. Water produced during testing will be contained in the steel pits and disposed of at a state approved disposal facility. Any oil or condensate produced will be stored in test tanks until sold and hauled from the site.
- 8 Ancillary Facilities
 - A. No camps or airstrips to be constructed.

Surface Use Plan
Cimarex Energy Co. of Colorado
Grayburg Deep Unit No. 23
Unit M Section 24
T17S R29E Eddy County, NM

9 Well Site Layout

- A. Exhibit "D" shows location and rig layout.
- B. This exhibit indicates proposed location of the 100' X 100' cuttings drying area.
- C. Mud pits in the closed circulating system will be steel pits and the cuttings drying area will be surrounded by a 2' X 2' ring levee and a 2' earthen berm. A 12 mil liner will cover the cuttings drying area and extend a minimum of 2' over the earthen berm where it will be anchored down. A pump off system will pump any accumulated fluids in the ring levee to the rig holding tanks to be cleaned and reused.
- D. After drying cuttings will be disposed of in a 50' X 50' cuttings burial cell. The bottom will be lined with a 12 mil liner. Drill cuttings will be hauled from the cuttings drying area and encapsulated in a 12 mil liner. The 12 mil liner will be folded over the cuttings and capped with a 20 mil membrane cap. The cell will be filled with 3' to 4' of top soil and leveled and contoured to conform to the original surrounding area.
- E. If the well is a producer, the cuttings burial area and those areas of the location not essential to production facilities will be reclaimed and seeded per BLM requirements.

10 Plans for Restoration of Surface

Rehabilitation of the location and cuttings burial cell will start in a timely manner after all drilling operations cease. The type of reclamation will depend on whether the well is a producer or a dry hole.

However, in either event, the drill cuttings will be allowed to dry properly, and fluid removed and disposed of in accordance with Article 7.B as previously noted. The cuttings burial area will then be leveled and contoured to conform to the original and surrounding area. Drainage systems, if any, will be reshaped to the original configuration with provisions made to alleviate erosion. These may need to be modified in certain circumstances to prevent inundation of the location's pad and surface facilities. After the area has been shaped and contoured, topsoil from the spoil pile will be placed over the disturbed area to the extent possible. Revegetation procedures will comply with BLM standards.

If the well is a dry hole, the pad and road area will be recountoured to match the existing terrain. Topsoil will be spread to the extent possible. Revegetation will comply with BLM standards.

Should the well be a producer, the previously noted procedures will apply to those areas which are not required for production facilities.

Surface Use Plan
Cimarex Energy Co. of Colorado
Grayburg Deep Unit No. 23
Unit M Section 24
T17S R29E Eddy County, NM

11 Other Information

- A. Topography consists of a sloping plane with loose tan sands. Vegetation is mainly yucca, mesquite and shin oak.
- B. The wellsite is on surface owned by Department of the Interior, Bureau of Land Management. The land is used mainly for farming, cattle ranching, recreational use, and oil and gas production.
- C. An Archaeological survey will be conducted on the location and proposed roads, and this report will be filed with the Bureau of Land Management in the Carlsbad BLM office.
- D. There are no know dwellings within 1 1/2 miles of this location.

Operator Certification Statement
Cimarex Energy Co. of Colorado
Grayburg Deep Unit No. 23
Unit M Section 24
T17S R29E Eddy County, NM

Operator's Representative

Cimarex Energy Co. of Colorado
P.O. Box 140907
Irving, TX 75014
Office Phone: (972) 443-6489
Zeno Farris

CERTIFICATION: I hereby certify that the statements and plans made in this APD are, to the best of my knowledge, true and correct; and that the work associated with the operations proposed herein will be performed by Cimarex Energy Co. of Colorado and/or its contractors/subcontractors and is in conformity with this plan and the terms and conditions under which it is approved. This statement is subject to the provision of U.S.C. 1001 for the filing of a false statement.

NAME: Zeno Farris
Zeno Farris
DATE: September 20, 2007
TITLE: Manager Operations Administration

VII. DRILLING

A. DRILLING OPERATIONS REQUIREMENTS

The BLM is to be notified a minimum of 2 hours in advance for a representative to witness:

- a. Spudding well
- b. Setting and/or Cementing of all casing strings
- c. BOPE tests

☒ **Eddy County**

Call the Carlsbad Field Office, 620 East Greene St., Carlsbad, NM 88220,
(575) 361-2822

- 1. A Hydrogen Sulfide (H₂S) Drilling Plan should be activated 500 feet prior to drilling into the Yates formation. **Hydrogen Sulfide has been measured 1600-16900 ppm in gas streams and 20-4000 ppm in STVs.**
- 2. Unless the production casing has been run and cemented or the well has been properly plugged, the drilling rig shall not be removed from over the hole without prior approval.
- 3. Floor controls are required for 3M or Greater systems. These controls will be on the rig floor, unobstructed, readily accessible to the driller and will be operational at all times during drilling and/or completion activities. Rig floor is defined as the area immediately around the rotary table; the area immediately above the substructure on which the draw works are located, this does not include the dog house or stairway area.

B. CASING

- 1. The 13-3/8 inch surface casing shall be set **a minimum of 25 feet into the Rustler Anhydrite and above the salt at approximately 375 feet** and cemented to the surface.
 - a. If cement does not circulate to the surface, the appropriate BLM office shall be notified and a temperature survey utilizing an electronic type temperature survey with a surface log readout will be used or a cement bond log shall be run to verify the top of the cement.
 - b. Wait on cement (WOC) time for a primary cement job will be a minimum 18 hours for a water basin, 24 hours in the potash area, or 500 pounds compressive strength, whichever is greater. (This is to include the lead cement).

- c. Wait on cement (WOC) time for a remedial job will be a minimum of 4 hours after bringing cement to surface or 500 pounds compressive strength, whichever is greater.
- d. If cement falls back, remedial action will be done prior to drilling out that string.

Possible lost circulation in the Grayburg and San Andres formations.

Possible water flows in the Salado and Artesia Groups.

High pressure gas bursts in the Wolfcamp.

- 2. The minimum required fill of cement behind the 8-5/8 inch intermediate casing is:

☒ Cement to surface. If cement does not circulate see B.1.a-d above.

- 3. The minimum required fill of cement behind the 5-1/2 inch production casing is:

☒ Cement should tie-back at least 200 feet into previous casing string. Operator shall provide method of verification.

- 4. If hardband drill pipe is rotated inside casing, returns will be monitored for metal. If metal is found in samples, drill pipe will be pulled and rubber protectors which have a larger diameter than the tool joints of the drill pipe will be installed prior to continuing drilling operations.

C. PRESSURE CONTROL

- 1. All blowout preventer (BOP) and related equipment (BOPE) shall comply with well control requirements as described in Onshore Oil and Gas Order No. 2 and API RP 53 Sec. 17.
- 2. The appropriate BLM office shall be notified a minimum of 2 hours in advance for a representative to witness the tests.
 - a. The tests shall be done by an independent service company.
 - b. The results of the test shall be reported to the appropriate BLM office.
 - c. All tests are required to be recorded on a calibrated test chart. A copy of the BOP/BOPE test chart and a copy of independent service company test will be submitted to the appropriate BLM office.
 - d. The BOP/BOPE test shall include a low pressure test from 250 to 300 psi. The test will be held for a minimum of 10 minutes if test is done with a test plug

and 30 minutes without a test plug.

- e. BOP/BOPE must be tested by an independent service company within 500 feet of the top of the **Wolfcamp** formation **if the time between the setting of the intermediate casing and reaching this depth exceeds 20 days**. This test does not exclude the test prior to drilling out the casing shoe as per Onshore Order No. 2.
- f. A variance to test only the surface casing to the reduced pressure of 1000 psi with the rig pumps is approved. **The BOP will be tested to 5000 psi by an independent service company.**

D. DRILLING MUD

Mud system monitoring equipment, with derrick floor indicators and visual and audio alarms, shall be operating before drilling into the **Wolfcamp** formation, and shall be used until production casing is run and cemented.

Engineer on call phone (after hours): Carlsbad: (575) 706-2779

WWI 112007



NEW MEXICO ENERGY, MINERALS and NATURAL RESOURCES DEPARTMENT

BILL RICHARDSON

Governor

Joanna Prukop

Cabinet Secretary

Mark E. Fesmire, P.E.

Director

Oil Conservation Division

November 01, 2007

James Bruce
Attorney at Law
P.O. Box 1056
Santa Fe, NM 87501

RE: **Grayburg Deep Unit Well No. 23**
330 feet FSL and 1310 feet FWL (Unit M) (Unorthodox)
SW/4SW/4 of Section 24, T-17 -S, R-29-E,
NMPM, Eddy County, New Mexico

Administrative Order NSL-5713

Dear Mr. Bruce:

Reference is made to the following:

(a) your application (administrative application reference No. **pTDS0727751514**) submitted to the New Mexico Oil Conservation Division (the Division) in Santa Fe, New Mexico on October 4, 2007, on behalf of Cimarex Energy Company of Colorado ("Cimarex"); and

(b) the Division's records pertinent to Cimarex's request.

Cimarex Energy Company of Colorado requests to drill its Grayburg Deep Unit Well No. 23 to form a standard 40-acre oil spacing and proration unit at an unorthodox Wolfcamp oil well location as referenced above in Section 24, Township 17 South, Range 29 East, N.M.P.M., in Eddy County, New Mexico.

The SW/4SW/4 of Section 24 will be dedicated to this well. Cimarex intends to test the Wolfcamp formation. These pools are governed by the Division's Statewide Rules and Regulations which provide for wells on 40-acre spacing units to be located no closer than 330 feet to the outer boundary of the quarter-quarter section on which the well is located.

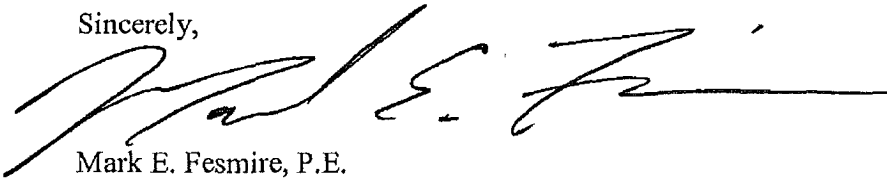
It is our understanding that the unorthodox location of this well is necessary because of topographical reasons, and the Bureau of Land Management (BLM), the surface owner, required the well to be moved to the proposed location

Your application on behalf of Cimarex has been duly filed under the provisions of Division Rules 104. F. It is our understanding that the interest ownership in this acreage and the offsetting acreage in the Wolfcamp formation is identical, therefore no notice of this application is required.

Pursuant to the authority granted under the provisions of Division Rules 104. F(2), the above-described unorthodox Wolfcamp oil pool location is hereby approved.

Jurisdiction of this case is retained for the entry of such further orders as the Division may deem necessary.

Sincerely,

A handwritten signature in black ink, appearing to read 'Mark E. Fesmire', with a long horizontal flourish extending to the right.

Mark E. Fesmire, P.E.
Director

MEF/re

cc: New Mexico Oil Conservation Division - Artesia
Bureau of Land Management (BLM)