

OCD-ARTESIA

Form 3160-5
(June 1990)UNITED STATES
DEPARTMENT OF THE INTERIOR
BUREAU OF LAND MANAGEMENTFORM APPROVED
Budget Bureau No. 1004-0135
Expires, March 31, 1993

SUNDRY NOTICES AND REPORTS ON WELLS

Do not use this form for proposals to drill or to deepen or reentry to a different reservoir.
Use "APPLICATION FOR PERMIT--" for such proposals

SUBMIT IN TRIPLICATE

1. Type of Well:

Oil ☐ Gas ☐
☒ Well ☐ Well ☐ Other

DEC 20 2007

2. Name of Operator

Yates Petroleum Corporation

OCD-ARTESIA

3. Address and Telephone No.

105 South Fourth Street, Artesia, NM 88210 (505) 7481471

4. Location of Well (Footage, Sec., T., R., M., or Survey Description)

330 FNL & 2310 FWL, Sec. 3-T23S-R31E (Unit C, NENW)

5. Lease Designation and Serial No.
NM-81953

6. If Indian, Allottee or Tribe Name

7. If Unit or CA, Agreement Designation

8. Well Name and No.

Glow Worm ALX Federal #11

9. API Well No.

30-015-35313

10. Field and Pool, or Exploratory Area

Los Medanos/ Delaware

11. County or Parish, State

Eddy Co., NM

12. CHECK APPROPRIATE BOX(S) TO INDICATE NATURE OF NOTICE, REPORT, OR OTHER DATA

TYPE OF SUBMISSION

- ☐ Notice of Intent
- ☒ Subsequent Report
- ☐ Final Abandonment Notice

TYPE OF ACTION

- ☐ Abandonment
- ☐ Recompletion
- ☐ Plugging Back
- ☐ Casing Repair
- ☐ Altering Casing
- ☒ Other Off Lease Measurement

Alternative Method of Measurement

- ☐ Change of Plans
- ☐ New Construction
- ☐ Non-Routine Fracturing
- ☐ Water Shut-Off
- ☐ Conversion to Injection
- ☐ Dispose Water

(Note: Report results of multiple completion on Well completion or Recompletion Report and Log Form)

13. Describe Proposed or Completed Operations (Clearly state all pertinent details, and give pertinent dates, including estimated date of starting any proposed work. If well is directionally drilled, give subsurface locations and measured and true vertical depths for all markers and zones pertinent to this work)*

Yates Petroleum Corporation respectfully request approval to off lease measurement/Alternative Method of Measurement.

The gas from the Glow Worm ALX Federal #11 will be measured on lease #81953.

The gas from the Glow Worm ALX Federal #11 will be sold off lease at Duke meter #722154-00 located Between Section 35-T22S-R31E, and Section 2-T23S- R31E.

The off lease measurement of production is in the interest of conservation and economic feasibility, and will not result in reduced royalty or improper measurement of production.

14. I hereby certify that the foregoing is true and correct

Signed

Maite Reyes

Title Production Secretary

Date December 12, 2007

(This space for Federal or State office use)

Approved by

Conditions of approval, if any

ALEXIS C. SWOBODA PETROLEUM ENGINEER

Date

12/18/07

Title 18 U.S.C. Section 1001 makes it a crime for any person knowingly and willfully to make to any department or agency of the United States any false, fictitious or fraudulent statements or representations as to any matter within its jurisdiction

*See Instruction on Reverse Side

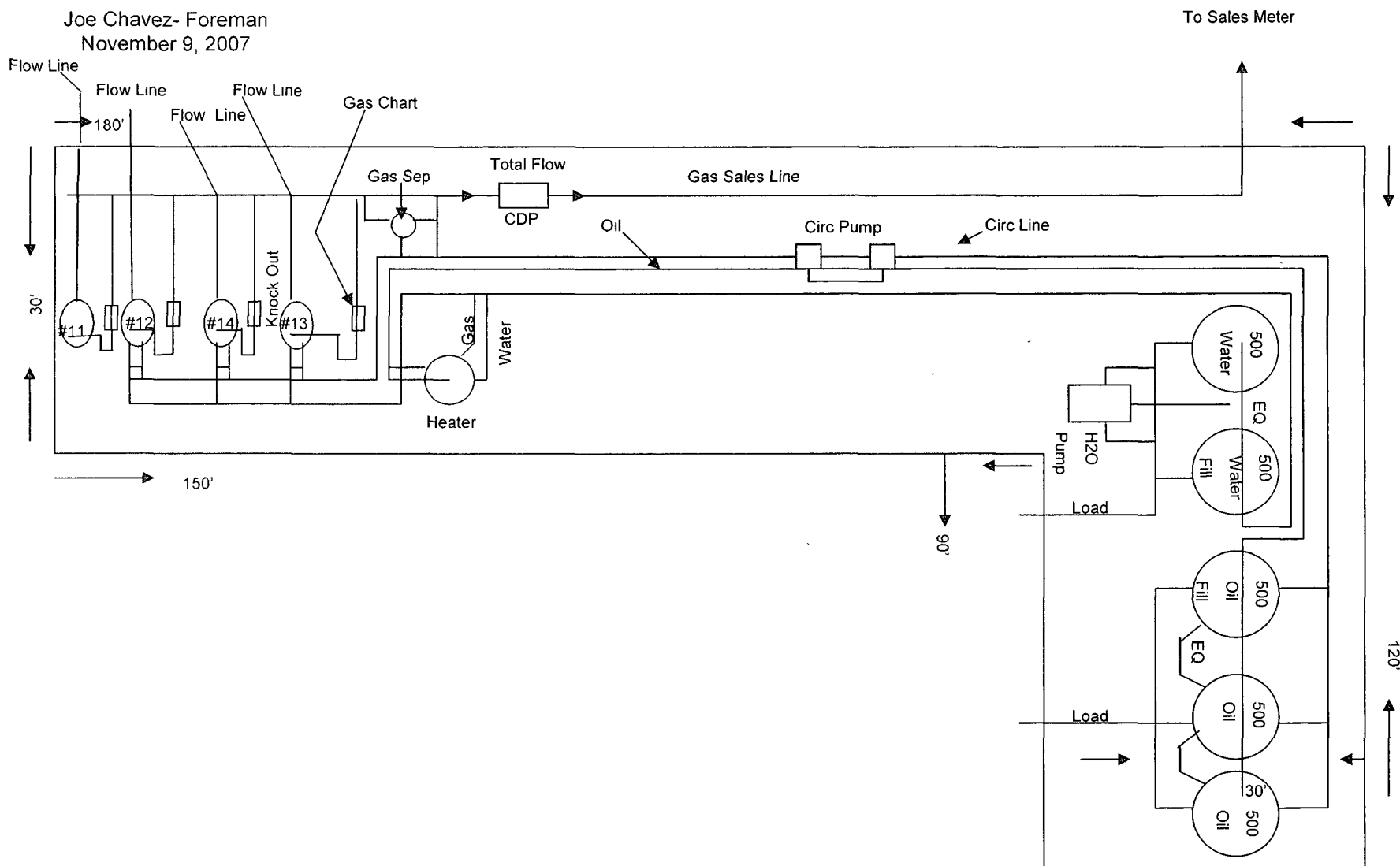


YATES
PETROLEUM
CORPORATION
105 South 4th Street * Artesia, NM 88210
(505)-748-1471

GLOW WORM "ALX" BATTERY

Sec 4- T23S- R31E * Unit B
Eddy County, NM

Joe Chavez- Foreman
November 9, 2007



This diagram is subject to the Yates Petroleum Corporation August 1983 Security Plan
which is on file at 105 South 4th Street, Artesia, NM

DISTRICT I

1603 R. French Dr., Hobbs, NM 88240

DISTRICT II

811 South First, Artesia, NM 88210

DISTRICT III

1000 Rio Brazos Rd., Aztec, NM 87410

DISTRICT IV

2040 South Pacheco, Santa Fe, NM 87505

State of New Mexico

Energy, Minerals and Natural Resources Department

Form C-102

Revised March 17, 1999

Instruction on back

Submit to Appropriate District Office

State Lease - 4 Copies

Fee Lease - 3 Copies

OIL CONSERVATION DIVISION

P.O. Box 2088

Santa Fe, New Mexico 87504-2088

☐ AMENDED REPORT

WELL LOCATION AND ACREAGE DEDICATION PLAT

API Number	Pool Code 40297	Pool Name Undes. Les Mendances, Delaware
Property Code	Property Name GLOW WORM "ALX" FEDERAL	Well Number 11
OGRID No. 025575	Operator Name YATES PETROLEUM CORPORATION	Elevation 3438

Surface Location

UL or lot No.	Section	Township	Range	Lot Idn	Feet from the	North/South line	Feet from the	East/West line	County
LOT 3	3	23S	31E		330	NORTH	2310	WEST	EDDY

Bottom Hole Location If Different From Surface

UL or lot No.	Section	Township	Range	Lot Idn	Feet from the	North/South line	Feet from the	East/West line	County

Dedicated Acres 40	Joint or Infill	Consolidation Code	Order No.
-----------------------	-----------------	--------------------	-----------

NO ALLOWABLE WILL BE ASSIGNED TO THIS COMPLETION UNTIL ALL INTERESTS HAVE BEEN CONSOLIDATED
OR A NON-STANDARD UNIT HAS BEEN APPROVED BY THE DIVISION

Lot 4	Lot 3 NM-81953	Lot 2	Lot 1	<p>OPERATOR CERTIFICATION</p> <p>I hereby certify the the information contained herein is true and complete to the best of my knowledge and belief.</p> <p><i>Cy Cowan</i></p> <p>Signature _____</p> <p>Printed Name _____</p> <p>Title _____</p> <p>Date _____</p> <p>January 12, 2006</p>