

District I
 PO Box 1980, Hobbs, NM 88241-1980
 District II
 PO Drawer DD, Artesia, NM 88211-0719
 District III
 1000 Rio Brazos Rd., Aztec, NM 87410
 District IV
 2040 South Pacheco, Santa Fe, NM 87505

State of New Mexico
 geology, Minerals & Natural Resources Department
OIL CONSERVATION DIVISION
2040 South Pacheco
Santa Fe, NM 87505

Form C-104
 Revised October 18, 1994
 Instructions on back
 Submit to Appropriate District Office
 5 Copies

AMENDED REPORT

I. REQUEST FOR ALLOWABLE AND AUTHORIZATION TO TRANSPORT

¹ Operator Name and Address Devon Energy Production Company, LP 20 N. Broadway, Suite 1500 Oklahoma City, OK 73102-8260		² OGRID Number 6137
⁴ API Number 30-015-34594		³ Reason for Filing Code NW
⁵ Pool Name Sand Dunes ; Atoka West	⁶ Pool Code 84640	
⁷ Property Code	⁸ Property Name North Pure Gold 8 Federal	⁹ Well Number 10

II. Surface Location

UI or lot no.	Section	Township	Range	Lot.Idn	Feet from the	North/South Line	Feet from the	East/West Line	County
H	8	23S	31E		1330	North	1310	East	Eddy

Bottom Hole Location

UI or lot no.	Section	Township	Range	Lot.Idn	Feet from the	North/South Line	Feet from the	East/West Line	County
B	8	23S	31E		587	North	618	West	Eddy
¹² Lse Code F	¹³ Producing Method Code F		¹⁴ Gas Connection Date 11/1/2006		¹⁵ C-129 Permit Number	¹⁶ C-129 Effective Date		¹⁷ C-129 Expiration Date	

III. Oil and Gas Transporters

¹⁸ Transporter OGRID	¹⁹ Transporter Name and Address	²⁰ POD	²¹ O/G	²² POD ULSTR Location and Description
151618	Enterprise Field Services LLC P. O. Box 4324 Houston, TX 77210-4324		G	
20445	Plains Marketing P. O. Box 4648 Houston, TX 77210		O	

IV. Produced Water

²³ POD	²⁴ POD ULSTR Location and Description

V. Well Completion Data

²⁵ Spud Date	²⁶ Ready Date	²⁷ TD	²⁸ PBDT	²⁹ Perforations	³⁰ DHC, DC, MC
3/21/2006	11/1/2006	14,471	14033	13534-38'	
³¹ Hole Size	³² Casing & Tubing Size		³³ Depth Set	³⁴ Sacks Cement	
17 1/2"	13 3/8" H-40		629'	590 sx CI C;55 sx to pit	
12 1/4"	9 5/8" J-55		4075'	1252 sx Poz C;100 sx to pit	
8 3/4"	7" P-110H		11,722'	1875 sx Class H	
6 1/8"	4 1/2" P-110H		14,471'	405 sx Class H	

VI. Well Test Data

³⁵ Date New Oil	³⁶ Gas Delivery Date	³⁷ Test Date	³⁸ Test Length	³⁹ Tbg. Pressure	⁴⁰ Csg. Pressure
11/1/2006	11/1/2006	11/1/2006	24		
⁴¹ Choke Size	⁴² Oil	⁴³ Water	⁴⁴ Gas	⁴⁵ AOF	⁴⁶ Test Method
	*0	*0	3501		

"I hereby certify that the rules of the Oil Conservation division have been complied with and that the information given above is true and complete to the best of my knowledge and belief.

Signature: *Judy A. Barnett*
 Printed Name: Judy A. Barnett
 Title: Regulatory Analyst
 Date: 2/12/2008 Phone: (405) 228-8699

OIL CONSERVATION DIVISION
 Approved by: **BRYAN G. ARRANT**
 Title: **DISTRICT II GEOLOGIST**
 Approval Date: **FEB 13 2008**

⁴⁷ If this is a change of operator fill in the OGRID number and name of the previous operator			
Previous Operator Signature	Printed Name	Title	Date

DISTRICT I
1625 N. French Dr., Hobbs, NM 88240

DISTRICT II
811 South First, Artesia, NM 88210

DISTRICT III
1000 Rio Brazos Rd., Artec, NM 87410

DISTRICT IV
2040 South Pacheco, Santa Fe, NM 87505

State of New Mexico
Energy, Minerals and Natural Resources Department

Form C-102
Revised March 17, 1999

Submit to Appropriate District Office
State Lease - 4 Copies
Fee Lease - 3 Copies

OIL CONSERVATION DIVISION

2040 South Pacheco
Santa Fe, New Mexico 87504-2088

AMENDED REPORT

WELL LOCATION AND ACREAGE DEDICATION PLAT

API Number	Pool Code 84640	Pool Name SAND DUNES; ATOKA WEST
Property Code	Property Name NORTH PURE GOLD "8" FEDERAL	Well Number 10
OGRID No.	Operator Name DEVON ENERGY PRODUCTION CO., L.P.	Elevation 3333'

Surface Location

UL or lot No.	Section	Township	Range	Lot Idn	Feet from the	North/South line	Feet from the	East/West line	County
H	8	23-S	31-E		1330	NORTH	1310	EAST	EDDY

Bottom Hole Location If Different From Surface

UL or lot No.	Section	Township	Range	Lot Idn	Feet from the	North/South line	Feet from the	East/West line	County
B	8	23S	31E		587	NORTH	618	WEST	EDDY

Dedicated Acres	Joint or Infill	Consolidation Code	Order No.
320			

NO ALLOWABLE WILL BE ASSIGNED TO THIS COMPLETION UNTIL ALL INTERESTS HAVE BEEN CONSOLIDATED OR A NON-STANDARD UNIT HAS BEEN APPROVED BY THE DIVISION

BHL

SL

LAT. 32°19'21.3"N
LONG. 103°47'44.2"W

OPERATOR CERTIFICATION

I hereby certify the the information contained herein is true and complete to the best of my knowledge and belief.

Signature _____
Judy A. Barnett
Printed Name
Regulatory Analyst
Title
2/12/2008
Date

SURVEYOR CERTIFICATION

I hereby certify that the well location shown on this plat was plotted from field notes of actual surveys made by me or under my supervision and that the same is true and correct to the best of my belief.

DECEMBER 1, 2005

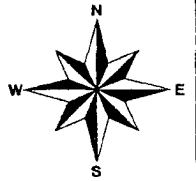
Date Surveyed _____
Signature & Seal of _____
Professional Surveyor

W.O. No. 6023

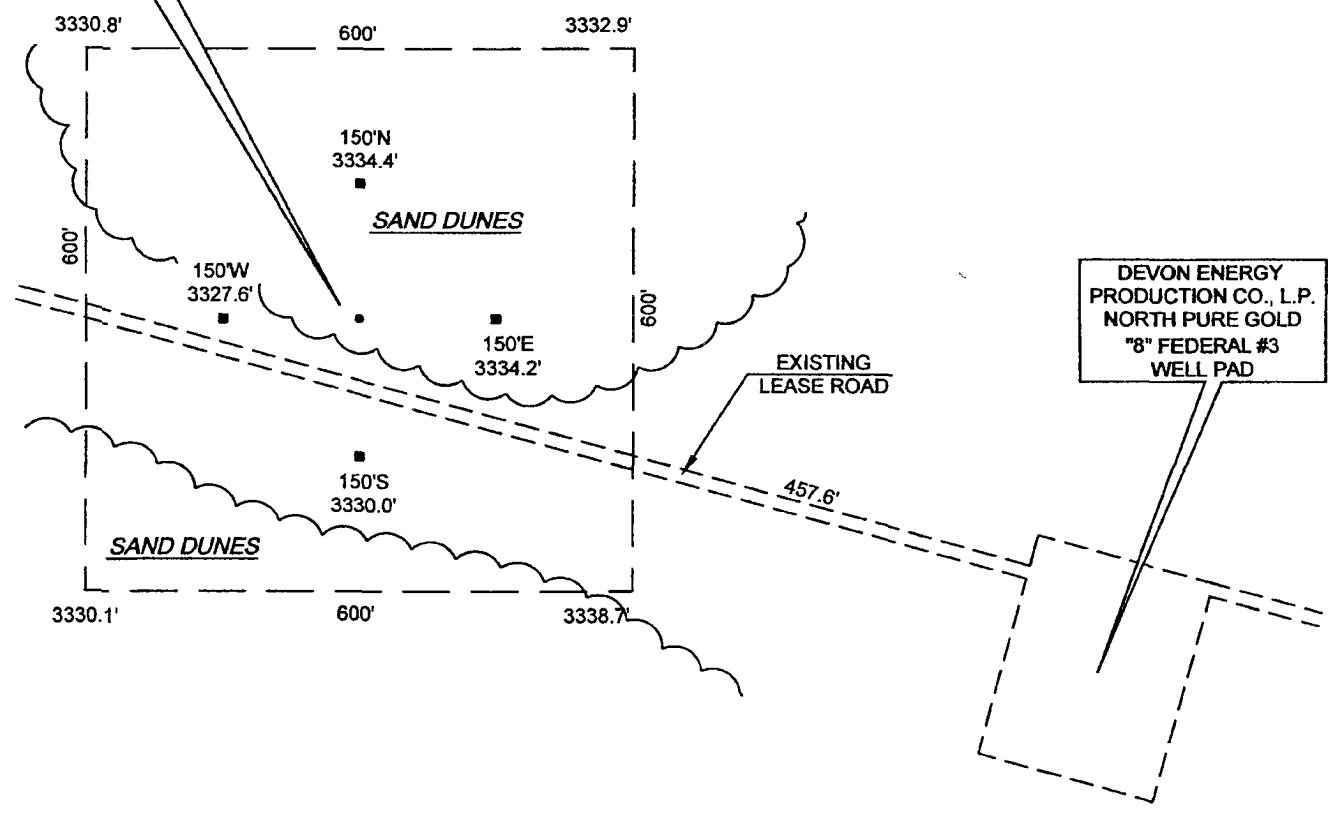
Certificate No. Gary L. Jones 7977

Basin Surveys

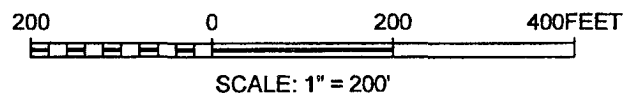
SECTION 8, TOWNSHIP 23 SOUTH, RANGE 31 EAST, N.M.P.M.
 EDDY COUNTY, NEW MEXICO



DEVON ENERGY
 PRODUCTION CO., L.P.
 NORTH PURE GOLD
 "8" FEDERAL #10
 GR. ELEV. = 3333.3'
 LAT.: 32°19'21.3"N
 LONG.: 103°47'44.2"W



DEVON ENERGY
 PRODUCTION CO., L.P.
 NORTH PURE GOLD
 "8" FEDERAL #3
 WELL PAD



DIRECTIONS TO LOCATION:
 FROM THE INTERSECTION OF STATE ROAD 128 AND COUNTY ROAD 787 (TWINWELL ROAD) GO SOUTHEAST ON 128 0.1 MILES TO LEASE ROAD, THEN NORTH 1.4 MILES, THEN NORTHEAST 0.5 MILES, THEN NORTHWEST TO THE NORTH PURE GOLD "9" FED. #5 LOCATION.

DEVON ENERGY PRODUCTION COMPANY, L.P.

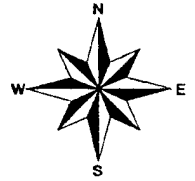
NORTH PURE GOLD "8" FEDERAL No.10 WELL PAD DETAIL

NORTH PURE GOLD "8" FEDERAL No.10
 LOCATED 1330' F.N.L. & 1310 F.E.L. SECTION 8,
 TOWNSHIP 23 SOUTH, RANGE 31 EAST, N.M.P.M.
 EDDY COUNTY, NEW MEXICO

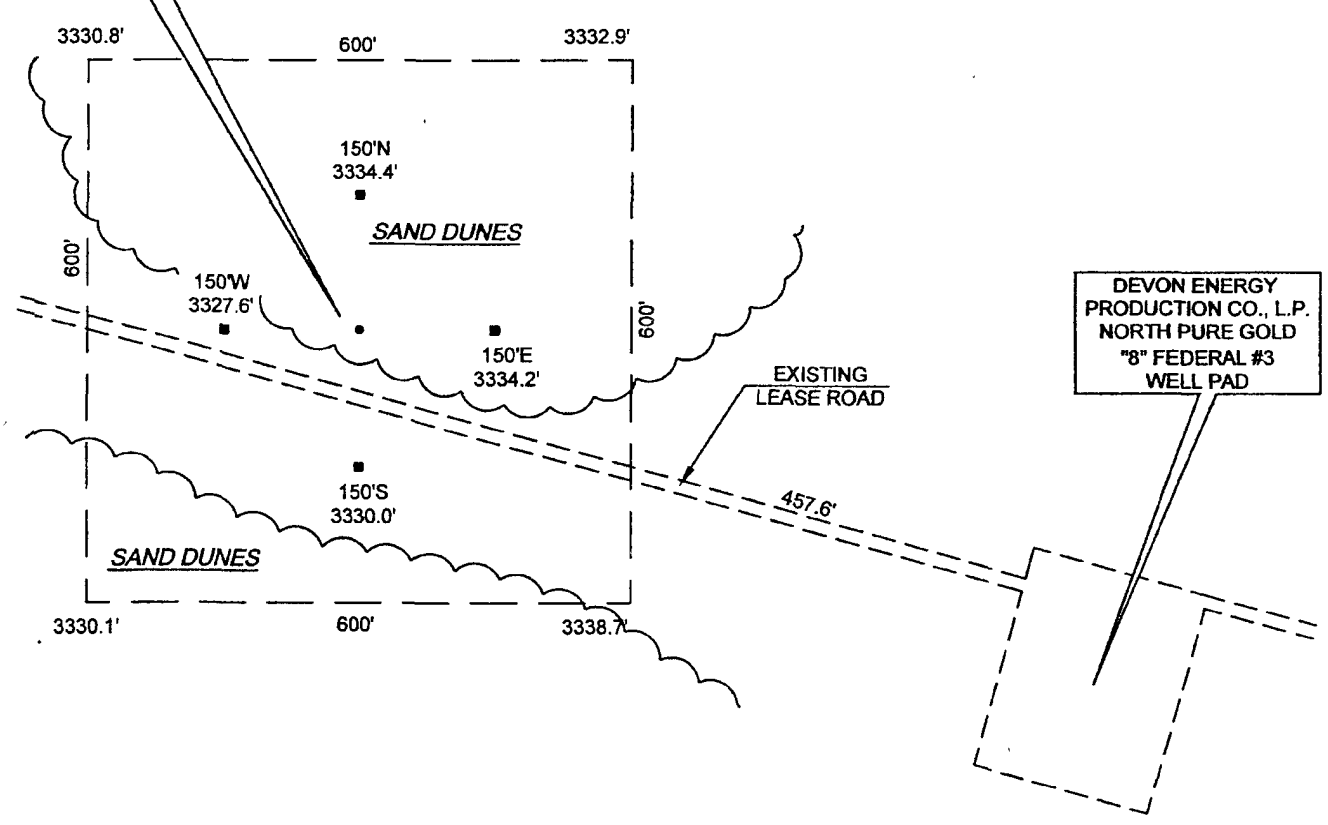
BASIN SURVEYS P.O. BOX 1786 -HOBBS, NEW MEXICO

W.O. Number: 6023	Drawn By: S.STANFIELD	Survey Date: 12-01-2005	Sheet 1 of 1 Sheets
Date: 12-06-2005	Disk: C:\DRAWINGS\DEVON\DEV6023-1		

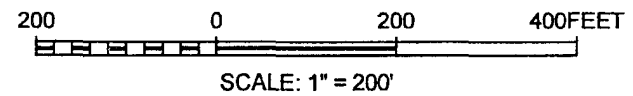
SECTION 8, TOWNSHIP 23 SOUTH, RANGE 31 EAST, N.M.P.M.
 EDDY COUNTY, NEW MEXICO



DEVON ENERGY
 PRODUCTION CO., L.P.
 NORTH PURE GOLD
 "8" FEDERAL #10
 GR. ELEV. = 3333.3'
 LAT.: 32°19'21.3"N
 LONG.: 103°47'44.2"W



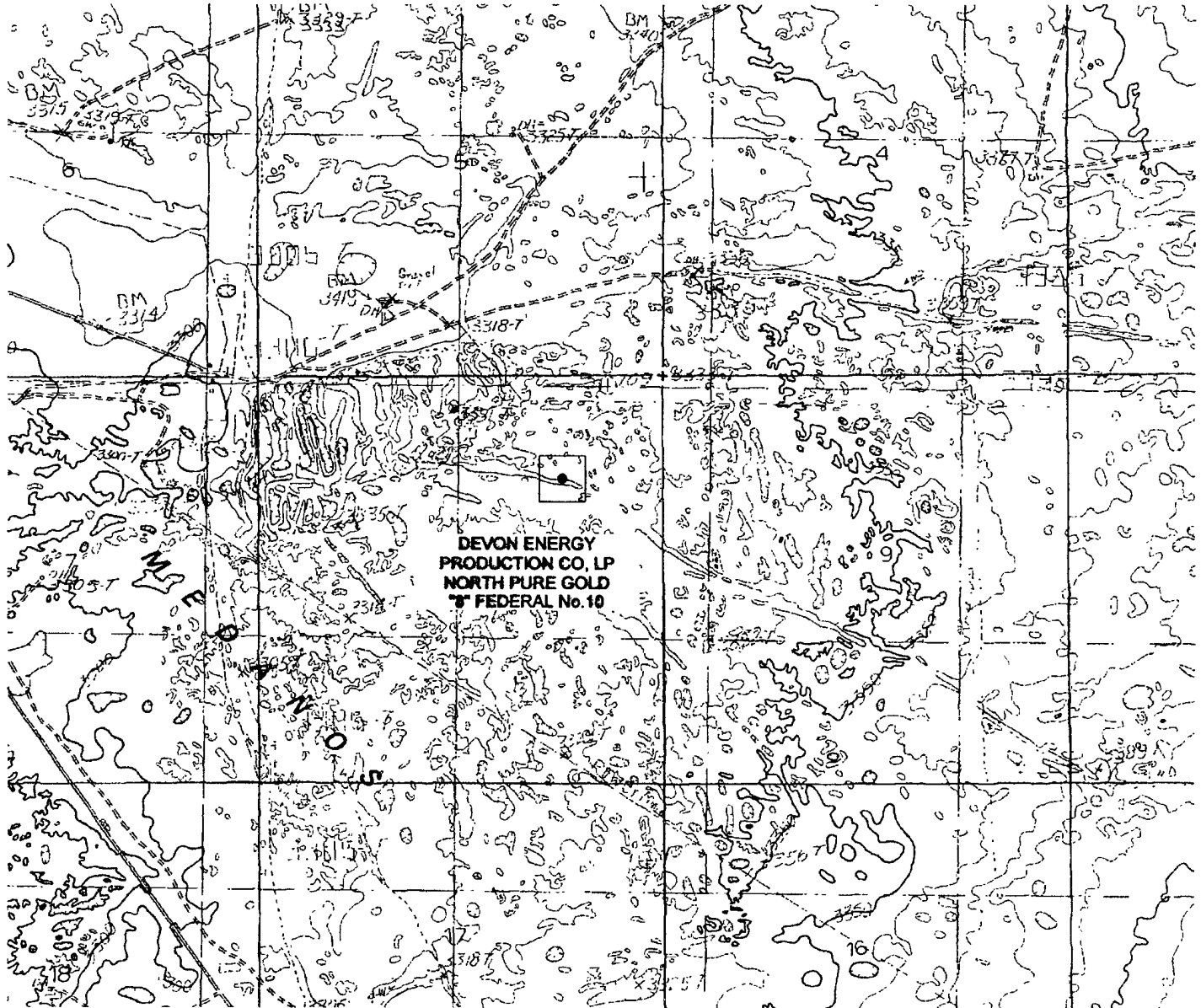
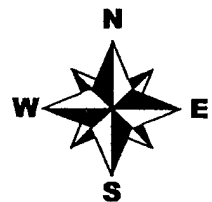
DEVON ENERGY
 PRODUCTION CO., L.P.
 NORTH PURE GOLD
 "8" FEDERAL #3
 WELL PAD



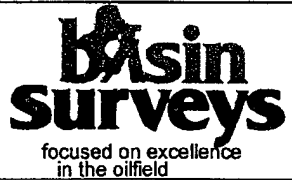
DIRECTIONS TO LOCATION:
 FROM THE INTERSECTION OF STATE ROAD 128 AND COUNTY ROAD 787 (TWINWELL ROAD) GO SOUTHEAST ON 128 0.1 MILES TO LEASE ROAD, THEN NORTH 1.4 MILES, THEN NORTHEAST 0.5 MILES, THEN NORTHWEST TO THE NORTH PURE GOLD "9" FED. #5 LOCATION.

DEVON ENERGY PRODUCTION COMPANY, L.P.	
NORTH PURE GOLD "8" FEDERAL No.10 WELL PAD DETAIL	
NORTH PURE GOLD "8" FEDERAL No.10 LOCATED 1330' F.N.L. & 1310 F.E.L. SECTION 8, TOWNSHIP 23 SOUTH, RANGE 31 EAST, N.M.P.M. EDDY COUNTY, NEW MEXICO	

BASIN SURVEYS P.O. BOX 1786 -HOBBS, NEW MEXICO	
W.O. Number: 6023	Drawn By: S.STANFIELD
Date: 12-06-2005	Disk: C:\DRAWINGS\DEVON\DEV6023-1



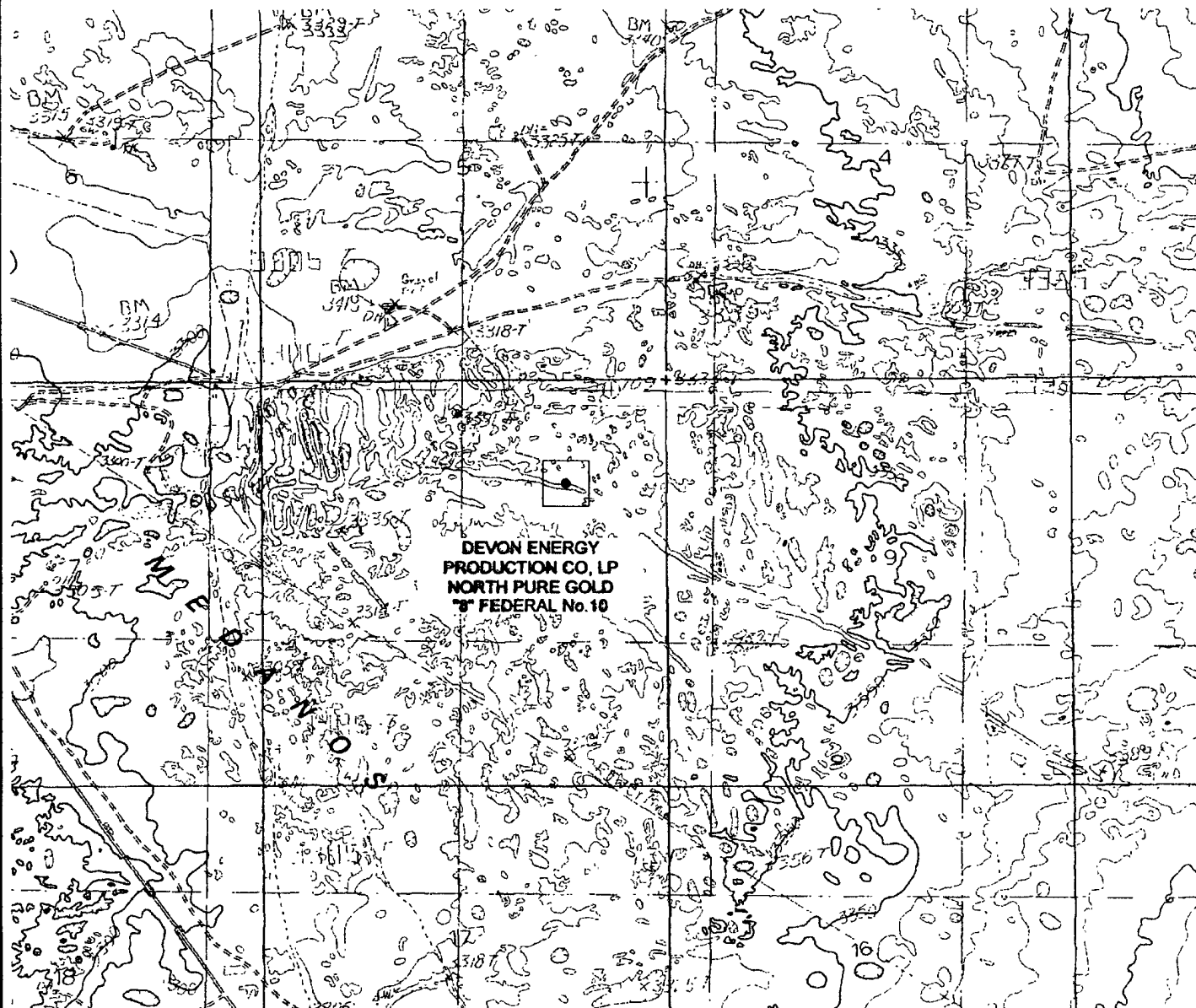
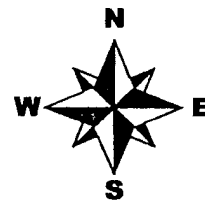
DEVON ENERGY PRODUCTION COMPANY, LP
NORTH PURE GOLD "8" FEDERAL No.10
SECTION 8, TOWNSHIP 23 SOUTH, RANGE 31 EAST, N.M.P.M.
EDDY COUNTY, NEW MEXICO



P.O. Box 1786
 1120 West County Rd.
 Hobbs, New Mexico 88241
 (505) 393-7316 - Office
 (505) 392-2206 - Fax
 basinsurveys.com

W.O. Number:	C:\DRAWINGS\DEVONI DEV6023-2
Survey Date:	DECEMBER 1, 2005
SCALE:	1"=2000'
Date:	DECEMBER 6, 2005

**DEVON ENERGY
 PRODUCTION CO., LP**



DEVON ENERGY PRODUCTION COMPANY, LP
NORTH PURE GOLD "8" FEDERAL No.10
SECTION 8, TOWNSHIP 23 SOUTH, RANGE 31 EAST, N.M.P.M.
EDDY COUNTY, NEW MEXICO



P.O. Box 1786
1120 West County Rd.
Hobbs, New Mexico 88241
(505) 393-7316 - Office
(505) 392-2206 - Fax
basinsurveys.com

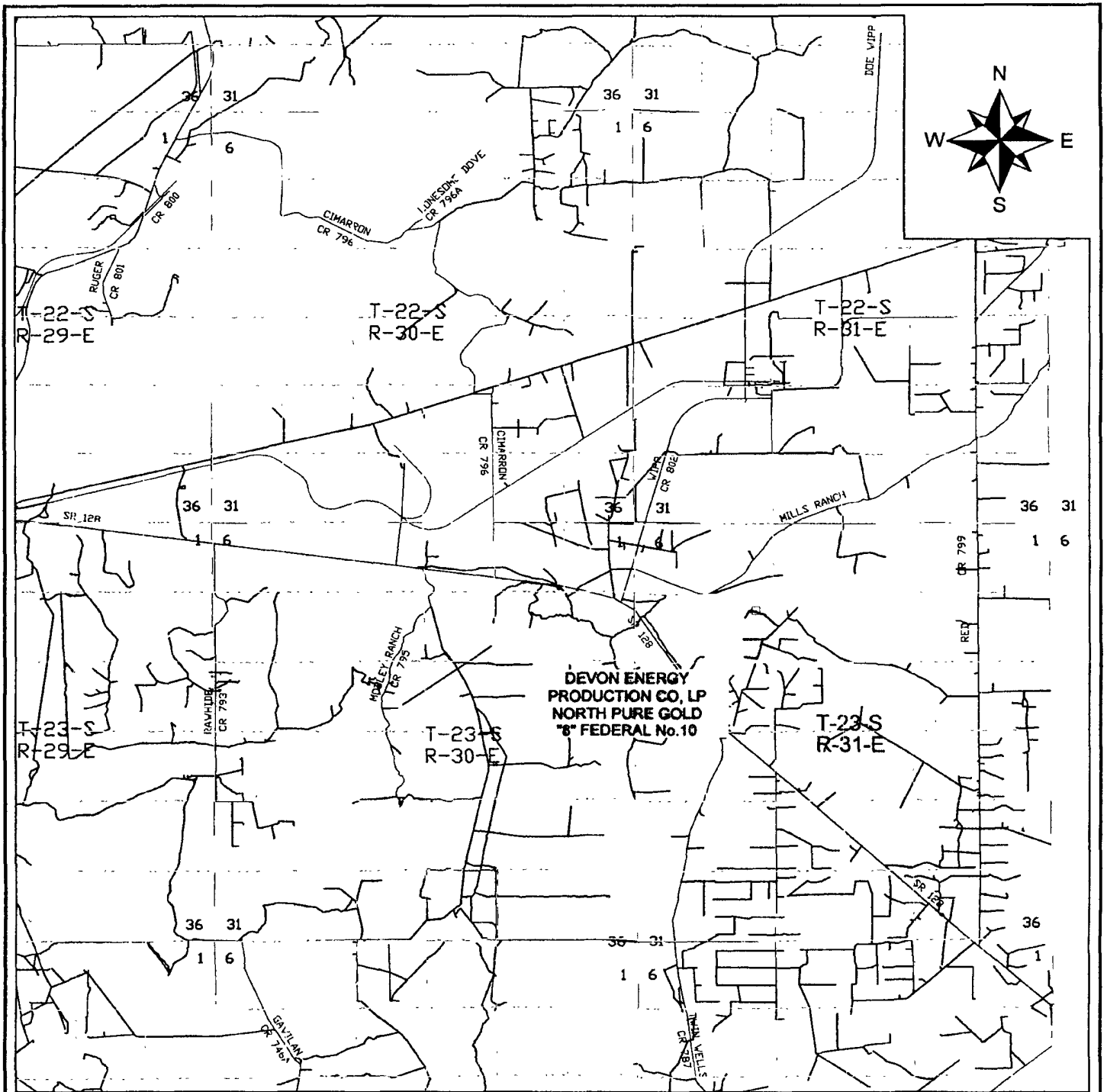
W.O. Number: C:\DRAWINGS\DEVON\
DEV6023-2

Survey Date: DECEMBER 1, 2005

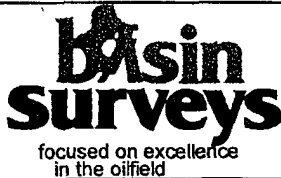
SCALE: 1"=2000'

Date: DECEMBER 6, 2005

DEVON ENERGY
PRODUCTION CO., LP



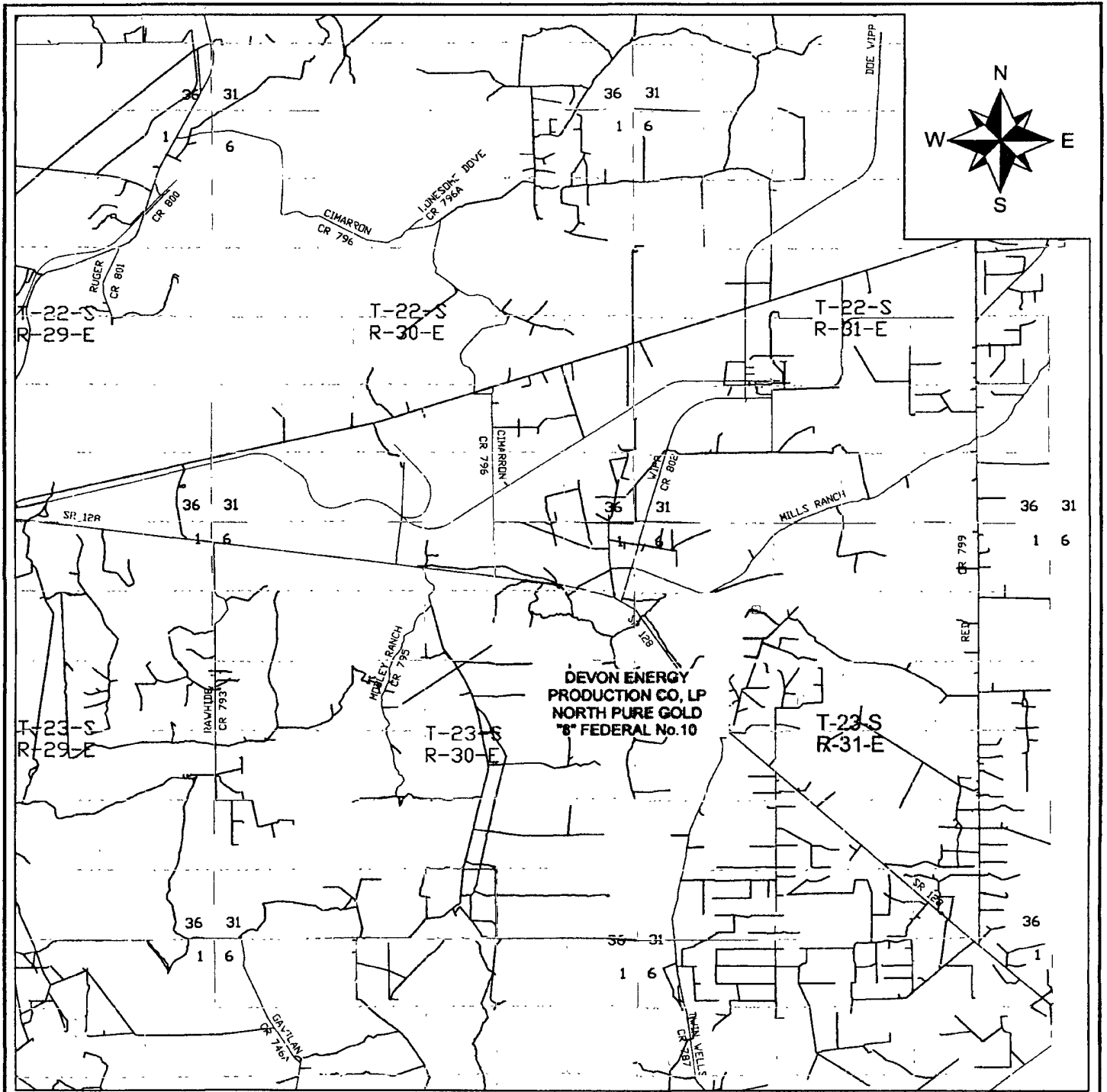
DEVON ENERGY PRODUCTION COMPANY, LP
NORTH PURE GOLD "8" FEDERAL No.10
SECTION 9, TOWNSHIP 23 SOUTH, RANGE 31 EAST, N.M.P.M.
EDDY COUNTY, NEW MEXICO




P.O. Box 1786
 1120 West County Rd.
 Hobbs, New Mexico 88241
 (505) 393-7316 - Office
 (505) 392-2206 - Fax
 basinsurveys.com

W.O. Number: C:\DRAWINGS\DEVON\
 DEV6023-2
 Survey Date: DECEMBER 1, 2005
 SCALE: 1"=2000'
 Date: DECEMBER 6, 2005

DEVON ENERGY
PRODUCTION CO., LP



DEVON ENERGY PRODUCTION COMPANY, LP
NORTH PURE GOLD "8" FEDERAL No.10
SECTION 9, TOWNSHIP 23 SOUTH, RANGE 31 EAST, N.M.P.M.
EDDY COUNTY, NEW MEXICO


basin surveys
 focused on excellence
 in the oilfield

P.O. Box 1786
 1120 West County Rd.
 Hobbs, New Mexico 88241
 (505) 393-7316 - Office
 (505) 392-2206 - Fax
 basinsurveys.com

W.O. Number:	C:\DRAWINGS\DEVON\DEV6023-2
Survey Date:	DECEMBER 1, 2005
SCALE:	1"=2000'
Date:	DECEMBER 6, 2005

DEVON ENERGY
PRODUCTION CO., LP