

Submit 3 Copies To Appropriate District
Office
District I
1625 N French Dr , Hobbs, NM 87240
District II
1301 W. Grand Ave., Artesia, NM 88210
District III
1000 Rio Brazos Rd., Aztec, NM 87410
District IV
1220 S St Francis Dr , Santa Fe, NM 87505

State of New Mexico
Energy, Minerals and Natural Resources

OIL CONSERVATION DIVISION
1220 South St. Francis Dr.
Santa Fe, NM 87505



Form C-103
May 27, 2004

WELL API NO. 30-015-33506	
5. Indicate Type of Lease STATE <input checked="" type="checkbox"/> FEE <input type="checkbox"/>	
6. State Oil & Gas Lease No.	
7. Lease Name or Unit Agreement Name: Bulldog State	
8. Well Number 1H	
9. OGRID Number 7377	
10. Pool name or Wildcat Undesignated (Wolfcamp)	

SUNDRY NOTICES AND REPORTS ON WELLS
(DO NOT USE THIS FORM FOR PROPOSALS TO DRILL OR TO DEEPEN OR PLUG BACK TO A DIFFERENT RESERVOIR. USE "APPLICATION FOR PERMIT" (FORM C-101) FOR SUCH PROPOSALS.)

1. Type of Well: Oil Well <input type="checkbox"/> Gas Well <input checked="" type="checkbox"/> Other	JUN 02 2008 OCD-ARTESIA
2. Name of Operator EOG Resources Inc.	
3. Address of Operator P.O. Box 2267 Midland, Texas 79702	
4. Well Location Unit Letter P : 660 feet from the South line and 660 feet from the East line Section 19 Township 18S Range 23E NMPM County Eddy	
11. Elevation (Show whether DR, RKB, RT, GR, etc.) 4045' GR	
Pit or Below-grade Tank Application <input type="checkbox"/> or Closure <input type="checkbox"/> Pit type _____ Depth to Groundwater _____ Distance from nearest fresh water well _____ Distance from nearest surface water _____ Pit Liner Thickness: _____ mil Below-Grade Tank: Volume _____ bbls; Construction Material _____	

12. Check Appropriate Box to Indicate Nature of Notice, Report, or Other Data
NOTICE OF INTENTION TO:

PERFORM REMEDIAL WORK ☐ PLUG AND ABANDON ☒
TEMPORARILY ABANDON ☐ CHANGE PLANS ☐
PULL OR ALTER CASING ☐ MULTIPLE COMPLETION ☐
OTHER: ☐

SUBSEQUENT REPORT OF:

REMEDIAL WORK ☐ ALTERING CASING ☐
COMMENCE DRILLING OPNS. ☐ PLUG AND ABANDONMENT ☐
CASING TEST AND CEMENT JOB ☐
OTHER: ☐

13. Describe proposed or completed operations. (Clearly state all pertinent details, and give pertinent dates, including estimated date of starting any proposed work). SEE RULE 1103. For Multiple Completions: Attach wellbore data for proposed completion or recompletion.

Proposed P&A Procedure, please see attachments :

Existing CIBP set at 6255' with 35' cement cap. (Abandoned perfs 6298 - 6322')

RIH and set 5-1/2" CIBP at 4325'. Squeeze Wolfcamp perfs w/ 125 sx Class C. Sting out of retainer and dump 2 bbls of cement on top of retainer. (Abandoned perfs 4414 - 4420')

RIH and cut 5-1/2" casing at 3500'. POOH and laydown.

Spot 50 sx plug from 3450 - 3550'. Tag.

Spot 50 sx plug from 1350' to 1450'. Tag.

Spot 15 sx Plug from 50' to surface. 60'

**Notify OCD 24 hrs. prior
To any work done.**

I hereby certify that the information above is true and complete to the best of my knowledge and belief. I further certify that any pit or below-grade tank has been/will be constructed or closed according to NMOCD guidelines ☐ , a general permit ☐ or an (attached) alternative OCD-approved plan ☐

SIGNATURE Stan Wagner TITLE Regulatory Analyst DATE 5/30/08

Type or print name Stan Wagner
E-mail address:

Telephone No. 432-686-3689

For State Use Only

APPROVED BY Phil Hawkins TITLE Compliance DATE 6/3/08

Conditions of Approval, if any:

EOG Resources, Inc.
Bulldog State 1
Plug to Abandon Procedure

Well Information

Location: 660' FSL & 660' FEL
(Surface) Section 19, T18S, R23E

AFE No:
PROP ID: 043437-000
KB: 4058'
GL: 4045'

Eddy County, New Mexico
API Number: 30-015-33506

Casing: 8-5/8" 32 ppf J55 LTC @ 1399' (Cemented to Surface)
5-1/2" 17 ppf N-80 LT&C @ 6548'

<u>Casing</u>	<u>Wt</u>	<u>Grade</u>	<u>Burst</u>	<u>Collapse</u>	<u>ID</u>	<u>Drift</u>
8 5/8"	24.0	K55	3930	2530	7.921	7.796
5-1/2"	17.0	N80	7740	6280	4.892	4.767

Directions to Well: From the intersection of State Hwy 285 & Hwy 82 in Artesia, NM go west 20.8 miles on 82 to Hope. At the west edge of Hope, turn south on CR 12 (Armstrong Rd) and go approximately 6 miles. Turn east 1 mile. Turn north to location.

Work Summary: This operation will plug to abandon this wellbore. EOG has drilled a replacement horizontal well from the vicinity of the original Bulldog State 1 well pad.

Procedure:

- 1) RU pulling unit. NU double gate BOP with blinds and 2-3/8" pipe rams. RU 2" line from the casing valve to a flowback tank.
- 2) Bleed off tubing pressure through the production equipment. Bleed off casing pressure. Load tubing and annulus with fresh water.
- 3) Unseat 5-1/2" PLS packer at 4370' and TOH with tubing. [The PLS packer is EOG property. Redress and return to storage.]

EOG Resources, Inc.
Bulldog State 1
Plug to Abandon Procedure

- 4) Pickup 5-1/2" cast iron cement retainer and TIH to 4325' (retainer must be set within 100 feet of the top Wolfcamp perf (perfs at 4414' – 4420')). Squeeze the Wolfcamp perfs as follows: Pump 20 bbls fresh water ahead followed by 125 sks class C plug mixed at 14.8 ppg. Cut displacement 2 bbls short with fresh water. Sting out of retainer and dump 2 bbls of cement slurry on top of retainer. POOH with setting tool. Shut down overnight to allow cement to set before attempting to cut casing. [Note: The cement squeeze is designed to place cement behind the 5-1/2' casing from 4414' to 3900', which will protect the annulus on the Bulldog State 1 well from pressure from the frac on the Bulldog 19 State 2H well.]
- 5) RU casing crew and lay down unit. RU wireline. RIH and cut casing at 3500 ft (400 ft above calculated top of cement). Pull casing.
- 6) RIH with tubing to 4150'. Spot salt gel from 4150' to top of stub. POOH to 50 ft below top of casing stub. Spot a balanced 50 sk class "C" plug with 2% CC mixed at 14.8 ppg. Pull out of hole 10 stands. Reverse 1-1/2 tubing volumes. Shut down for 4 hours. Run back in and tag top of plug. [This plug must be at least 50 ft in the stub and 50 ft above the top of stub.] Spot salt gel from top of plug to base of surface pipe. [Note: From Township 18S to 19S and Range 21E to 23E there are no wells producing from the interval from 3500 ft to base of the surface pipe at 1399', therefore, no additional plugs are recommended for this interval.]
- 7) Spot a 50 sk class "C" 2% CC plug mixed at 14.8 ppg from 1450' to 1350', or a minimum of 50 ft below the end of surface pipe and at least 50 ft up inside the surface casing. Pull ten stands, reverse 1-1/2 tubing volumes and shut down for 4 hours then run back in and tag plug. Spot salt gel from top of plug to surface.
- 8) Spot a 15 sk class "C" 2% CC, 14.8 ppg plug from 50 ft to surface.
- 9) Cut off wellhead. Weld on capping plate with 4" pipe extending 4 ft above ground level. Label marker with: EOG Resources, Inc., Bulldog State #1, and Location P-19-18S-23E.
- 10) RD pulling unit. Remove anchors. Clean location and remove all trash.
- 11) Contact EOG Resources materials personnel and determine the appropriate facility to send the casing and tubing for inspection.

**EOG Resources, Inc.
Bulldog State 1
Plug to Abandon Procedure**

Contacts:

Engineer	Tom Zeltmann	Office:	432-686-3630
		Cell:	432-934-6056
		Home:	432-694-6127
Consultant	Waymon Pitchford	Cell:	325-277-9897
		Cell:	505-703-9915
			Artesia Pecos Inn, Room 125

660' FSL
660' FEL
Section 19
Township 18 South
Range 23 East

**Bulldog State #1
Thames Field
Eddy County, NM**

KB: 4,058'
GL: 4,045'

**API #: 30-015-33506
Current Wellbore**

8-5/8" 24# K-55 @ 1399'

w/ 180 sx Class H + 10% A-10 + 10# LCM + 1%
CaCl₂ + ¼ # CF and
700 sx 35-65-6 + 6# salt + ¼ # CF and
200 sx Class C + 2% CaCl₂; did not circulate

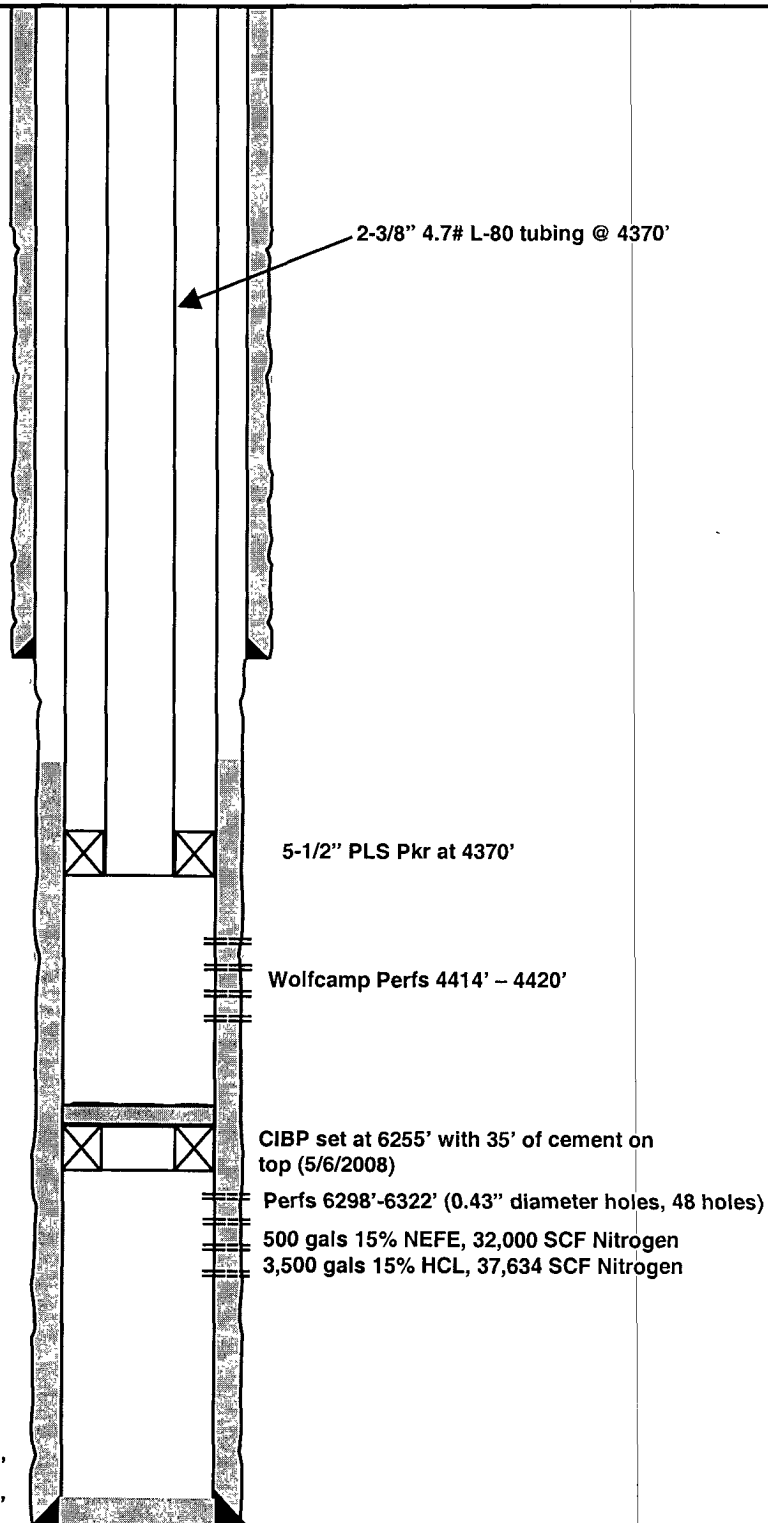
Top Job: 866 sx Class C + 2% CaCl₂ (414' to
surface)

5-12" 17# N-80 @ 6590'

1st Stage:
w/150 sx 50-50-2 + 5% salt + 1% BA-58 + 1%
FL25 + 0.2% SMS
2nd Stage:
w/415 sx 50-50-2

Maximum Deviation of 3-1/2
degrees occurs at 5744'

TD 6590'
PBTD 6535'



660' FSL
660' FEL
Section 19
Township 18 South
Range 23 East

**Bulldog State #1
Thames Field
Eddy County, NM**

**API #: 30-015-33506
Current Wellbore**

**KB: 4,058'
GL: 4,045'**

Proposed PTA Program

8-5/8" 24# K-55 @ 1399'

w/ 180 sx Class H + 10% A-10 + 10# LCM + 1%
CaCl₂ + ¼ # CF and
700 sx 35-65-6 + 6# salt + ¼ # CF and
200 sx Class C + 2% CaCl₂; did not circulate

Top Job: 866 sx Class C + 2% CaCl₂ (414' to
surface)

5-12" 17# N-80 @ 6590'

1st Stage:

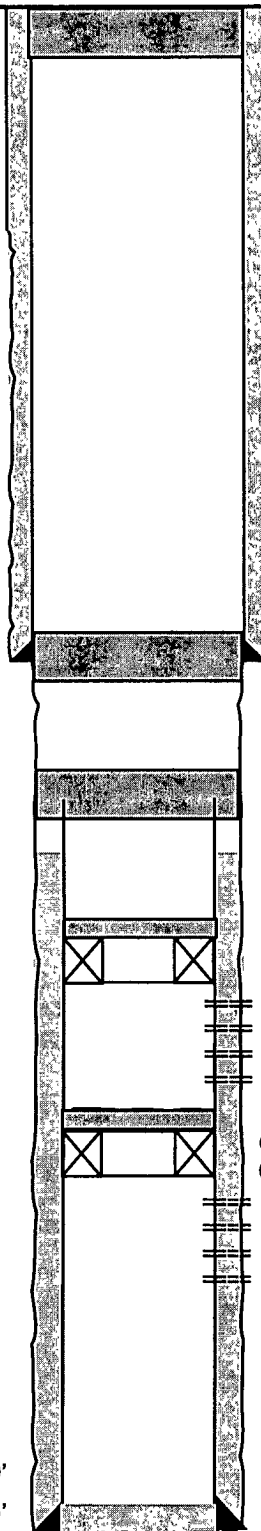
w/150 sx 50-50-2 + 5% salt + 1% BA-58 + 1%
FL25 + 0.2% SMS

2nd Stage:

w/415 sx 50-50-2

Maximum Deviation of 3-1/2
degrees occurs at 5744'

TD 6590'
PBSD 6535'



15 sks class c 2%CC, From 50' to
surface.

100' plug from 1450' to 1350', 50 sks
class c 2%CC, 50' below and 50' in
surface csg.

Attempt to cut csg at 3500'. 100' plug,
50 sks class c 2%CC, 50' in and 50'
above stub.

TOC at 3900' behind 5-1/2"

5-1/2" CICR at 4325' with
35'cmt on top

Wolfcamp Perfs 4414' - 4420'

CIBP set at 6255' with 35' of cmt on top
(5/6/2008)

Perfs 6298'-6322' (0.43" diameter holes, 48 holes)

500 gals 15% NEFE, 32,000 SCF Nitrogen
3,500 gals 15% HCL, 37,634 SCF Nitrogen