

## District I

1625 N. French Dr., Hobbs, NM 88240

## District II

1301 W. Grand Avenue, Artesia, NM 88210

## District III

1000 Rio Brazos Road, Aztec, NM 87410

## District IV

1220 S. St. Francis Dr., Santa Fe, NM 87505

State of New Mexico  
Energy Minerals and Natural ResourcesOil Conservation Division  
1220 South St. Francis Dr.  
Santa Fe, NM 87505

MAY 27 2008

OCD-ARTESIA

Form C-101  
May 27, 2004

Submit to appropriate District Office

☐ AMENDED REPORT  
Permit renewal request

## APPLICATION FOR PERMIT TO DRILL, RE-ENTER, DEEPEN, PLUGBACK, OR ADD A ZONE

<sup>1</sup> Operator Name and Address: RUBICON OIL & GAS, LLC, 508 W. Wall, Ste. 500, Midland, TX 79701		<sup>2</sup> OGRID Number: 194266	
<sup>3</sup> Property Code 36720		<sup>4</sup> Property Name LAKEWOOD 32	
<sup>5</sup> API Number 30-015-36346		<sup>6</sup> Well No. 2	
<sup>9</sup> Proposed Pool 1: Undesignated; Morrow		<sup>10</sup> Proposed Pool 2	

<sup>7</sup> Surface Location

UL or lot no.	Section	Township	Range	Lot Idn	Feet from the	North/South line	Feet from the	East/West line	County
I	32	19S	26E		1980	South	1200	East	Eddy

<sup>8</sup> Proposed Bottom Hole Location If Different From Surface

UL or lot no	Section	Township	Range	Lot Idn	Feet from the	North/South line	Feet from the	East/West line	County

## Additional Well Information

<sup>11</sup> Work Type Code NW	<sup>12</sup> Well Type Code GAS	<sup>13</sup> Cable/Rotary R	<sup>14</sup> Lease Type Code private	<sup>15</sup> Ground Level Elevation 3278' GR
<sup>16</sup> Multiple No	<sup>17</sup> Proposed Depth 9950'	<sup>18</sup> Formation Morrow	<sup>19</sup> Contractor TBA	<sup>20</sup> Spud Date 06/01/2008
Depth to Groundwater: 95'		Distance from nearest fresh water well: 1500'		Distance from nearest surface water: >1000'
Pit: Liner: Synthetic: 12_mils thick Clay <input type="checkbox"/> Pit Volume: 5000_bbls Drilling Method: Closed-Loop System Fresh Water <input checked="" type="checkbox"/> Brine Diesel/Oil-based <input type="checkbox"/> Gas/Air <input type="checkbox"/>				

<sup>21</sup> Proposed Casing and Cement Program

Hole Size	Casing Size	Casing weight/foot	Setting Depth	Sacks of Cement	Estimated TOC
17 5"	13 3/8"	48#	350'	390 sx	Surface
12 1/4"	9 5/8"	36#	1600'	700 sx	Surface
7 7/8"	4 1/2"	11 6#	9950'	1850 sx	1400'

<sup>22</sup> Describe the proposed program. If this application is to DEEPEN or PLUG BACK, give the data on the present productive zone and proposed new productive zone. Describe the blowout prevention program, if any. Use additional sheets if necessary.

Mud Program: 0-350' MW 8.4-9.0 ppg FW Native spud mud, 350-7500' MW 8.4-8.6 ppg FW, 7500-9800' MW 8.8-9.4 ppg cutbrine w/starch/polymer.

BOPE: Diagram attached, wellbore diagram attached.

H2S: o H2S seen in immediate area. Will have minimum compliance package setup prior to drilling out of 9 5/8" casing.

*NOTE: NEW PIT RULE*

<sup>23</sup> I hereby certify that the information given above is true and complete to the best of my knowledge and belief. I further certify that the drilling pit will be constructed according to NMOCD guidelines X, a general permit ☐, or an (attached) alternative OCD-approved plan ☐.

Printed name: Ann E. Ritchie

Title: Regulatory Agent

E-mail Address: ann.ritchie@wtor.net

Date: 05/20/2008

Phone: 432 684-6381/683-6565

## OIL CONSERVATION DIVISION

Approved by:

Title:

Approval Date:

Expiration Date:

Conditions of Approval Attached ☐

DISTRICT I  
1625 N. French Dr., Hobbs, NM 88240

DISTRICT II  
1301 W. Grand Avenue, Artesia, NM 88210

DISTRICT III  
1000 Rio Brazos Rd., Aztec, NM 87410

DISTRICT IV  
1220 S. St. Francis Dr., Santa Fe, NM 87505

State of New Mexico  
Energy, Minerals and Natural Resources Department

Form C-102  
Revised October 12, 2005

Submit to Appropriate District Office  
State Lease - 4 Copies  
Fee Lease - 3 Copies

**OIL CONSERVATION DIVISION**  
1220 South St. Francis Dr.  
Santa Fe, New Mexico 87505

☐ AMENDED REPORT

**WELL LOCATION AND ACREAGE DEDICATION PLAT**

API Number <i>30-015</i>	Pool Code <i>96070</i>	Pool Name <i>Undesignated; Morrow</i>
Property Code	Property Name <b>LAKEWOOD "32"</b>	Well Number <b>2</b>
OGRID No.	Operator Name <b>RUBICON OIL &amp; GAS, L.L.C.</b>	Elevation <b>3278'</b>

**Surface Location**

UL or lot No.	Section	Township	Range	Lot Idn	Feet from the	North/South line	Feet from the	East/West line	County
<b>1</b>	<b>32</b>	<b>19 S</b>	<b>26 E</b>		<b>1980</b>	<b>SOUTH</b>	<b>1200</b>	<b>EAST</b>	<b>EDDY</b>

**Bottom Hole Location If Different From Surface**

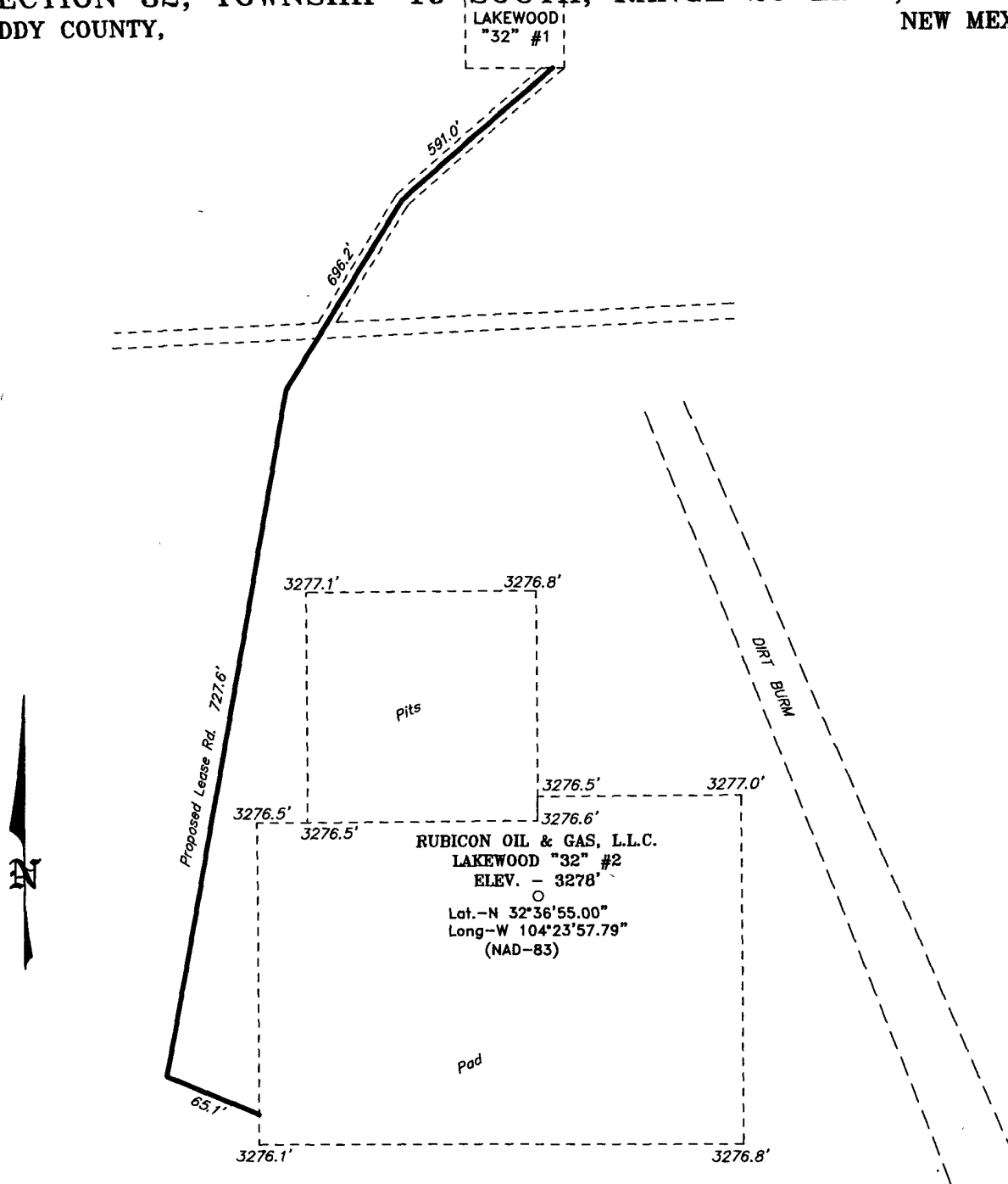
UL or lot No.	Section	Township	Range	Lot Idn	Feet from the	North/South line	Feet from the	East/West line	County

Dedicated Acres <i>160</i>	Joint or Infill	Consolidation Code	Order No.
-------------------------------	-----------------	--------------------	-----------

**NO ALLOWABLE WILL BE ASSIGNED TO THIS COMPLETION UNTIL ALL INTERESTS HAVE BEEN CONSOLIDATED  
OR A NON-STANDARD UNIT HAS BEEN APPROVED BY THE DIVISION**

	<p><b>OPERATOR CERTIFICATION</b></p> <p>I hereby certify that the information contained herein is true and complete to the best of my knowledge and belief, and that this organization either owns a working interest or unleased mineral interest in the land including the proposed bottom hole location pursuant to a contract with an owner of such a mineral or working interest, or to a voluntary pooling agreement or a compulsory pooling order heretofore entered by the division.</p> <p><i>[Signature]</i> <b>5-20-08</b> Signature Date</p> <p><b>Ann E. Ritchie, Agent</b> Printed Name</p>	
	<p><b>SURVEYOR CERTIFICATION</b></p> <p>I hereby certify that the well location shown on this plat was plotted from field notes of actual surveys made by me or under my supervision and that the same is true and correct to the best of my belief.</p> <p><b>FEBRUARY 14, 2008</b></p> <p>Date Surveyed</p> <p><i>[Signature]</i> <b>GARY L. JONES</b> Signature &amp; Seal Professional Surveyor</p> <p><b>7977</b> Certificate No.</p>	
	<p><b>BASIN SURVEYS</b></p>	
	<p><b>SURFACE LOCATION</b> Lat - N32°36'55.00" Long - W104°23'57.79" NMSPEC - N 587575.608 E 520999.624 (NAD-83)</p>	

SECTION 32, TOWNSHIP 19 SOUTH, RANGE 26 EAST, N.M.P.M.,  
EDDY COUNTY, NEW MEXICO.



Directions to Location:

FROM THE JUNCTION OF US HWY 285 AND CO. RD. 31, GO EAST ON CO. RD. 31 FOR APPROX. 1.2 MILES TO SWEETWATER ROAD; THENCE SOUTH FOR APPROX. 0.2 MILE TO A LEASE ROAD; THENCE WEST ON LEASE ROAD FOR APPROX 1.1 MILE TO EXISTING THE LAKEWOOD 32 #1; THENCE FOLLOW LEASE ROAD FOR APPROX. 0.2 MILE TO A "T" INTERSECTION AND PROPOSED LEASE ROAD.

**BASIN SURVEYS** P.O. BOX 1786-HOBBS, NEW MEXICO

W.O. Number: 19185 Drawn By: K. GOAD

Date: 02-19-2008 Disk: KJG - 19185W.DWG

**RUBICON OIL & GAS, L.L.C.**

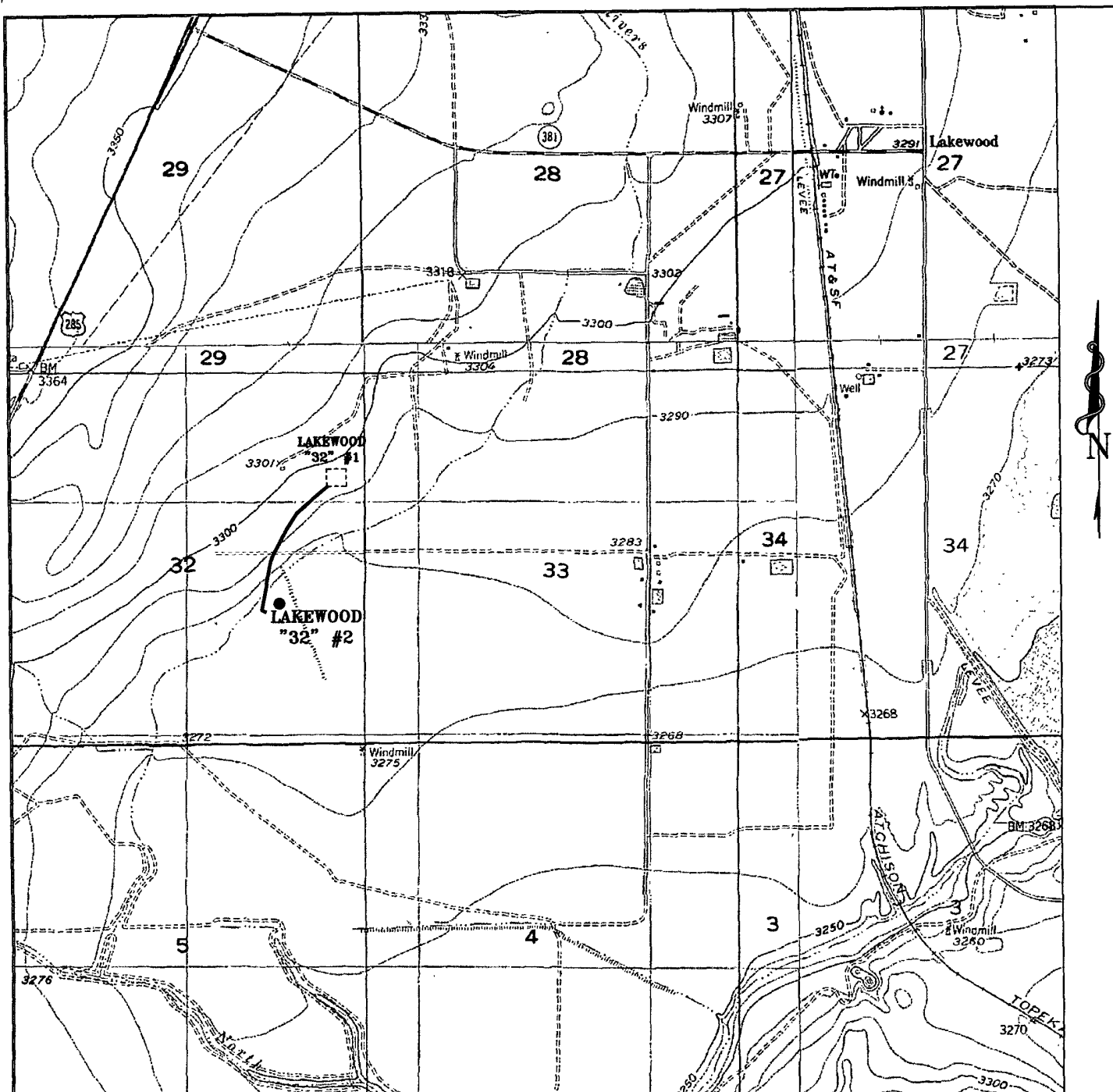
REF: LAKEWOOD "32" #2 / WELL PAD TOPO

THE LAKEWOOD "32" #2 LOCATED 1980' FROM  
THE SOUTH LINE AND 1200' FROM THE EAST LINE OF  
SECTION 32, TOWNSHIP 19 SOUTH, RANGE 26 EAST,

N.M.P.M., EDDY COUNTY, NEW MEXICO.

Survey Date: 02-14-2008

Sheet 1 of 1 Sheets



### LAKEWOOD "32" #2

Located 1980' FSL and 1200' FEL  
 Section 32, Township 19 South, Range 26 East,  
 N.M.P.M., Eddy County, New Mexico.



P.O. Box 1786  
 1120 N. West County Rd.  
 Hobbs, New Mexico 88241  
 (505) 393-7316 - Office  
 (505) 392-3074 - Fax  
[basinsurveys.com](http://basinsurveys.com)

W.O. Number: KJG 19185T.DWG

Survey Date: 02-14-2008

Scale: 1" = 2000'

Date: 02-19-2008

**RUBICON  
 OIL & GAS,  
 L.L.C.**



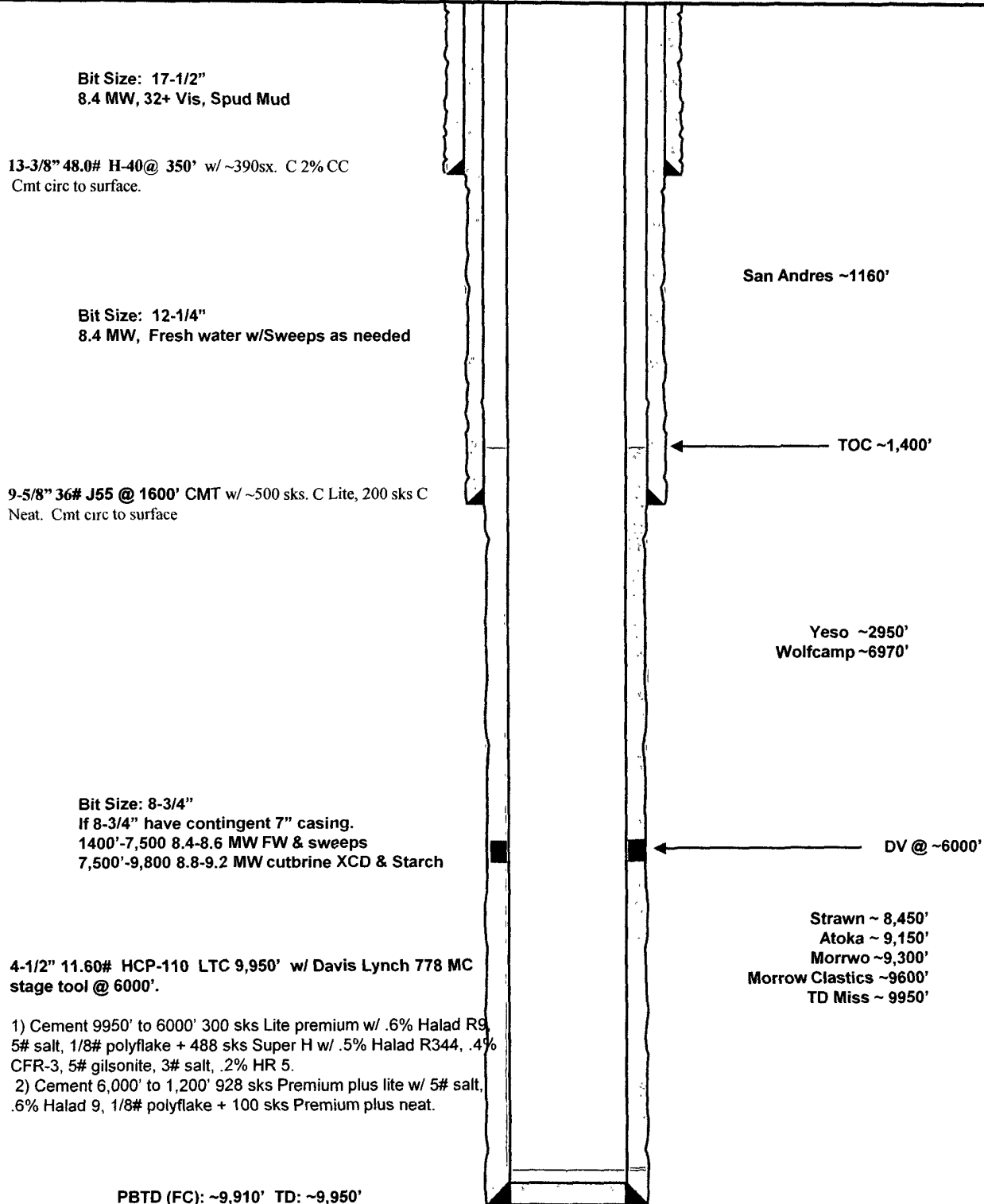
**Rubicon Oil & Gas, LLC  
Lakewood Prospect**

**KB: XXXX'  
GL: 3278'**

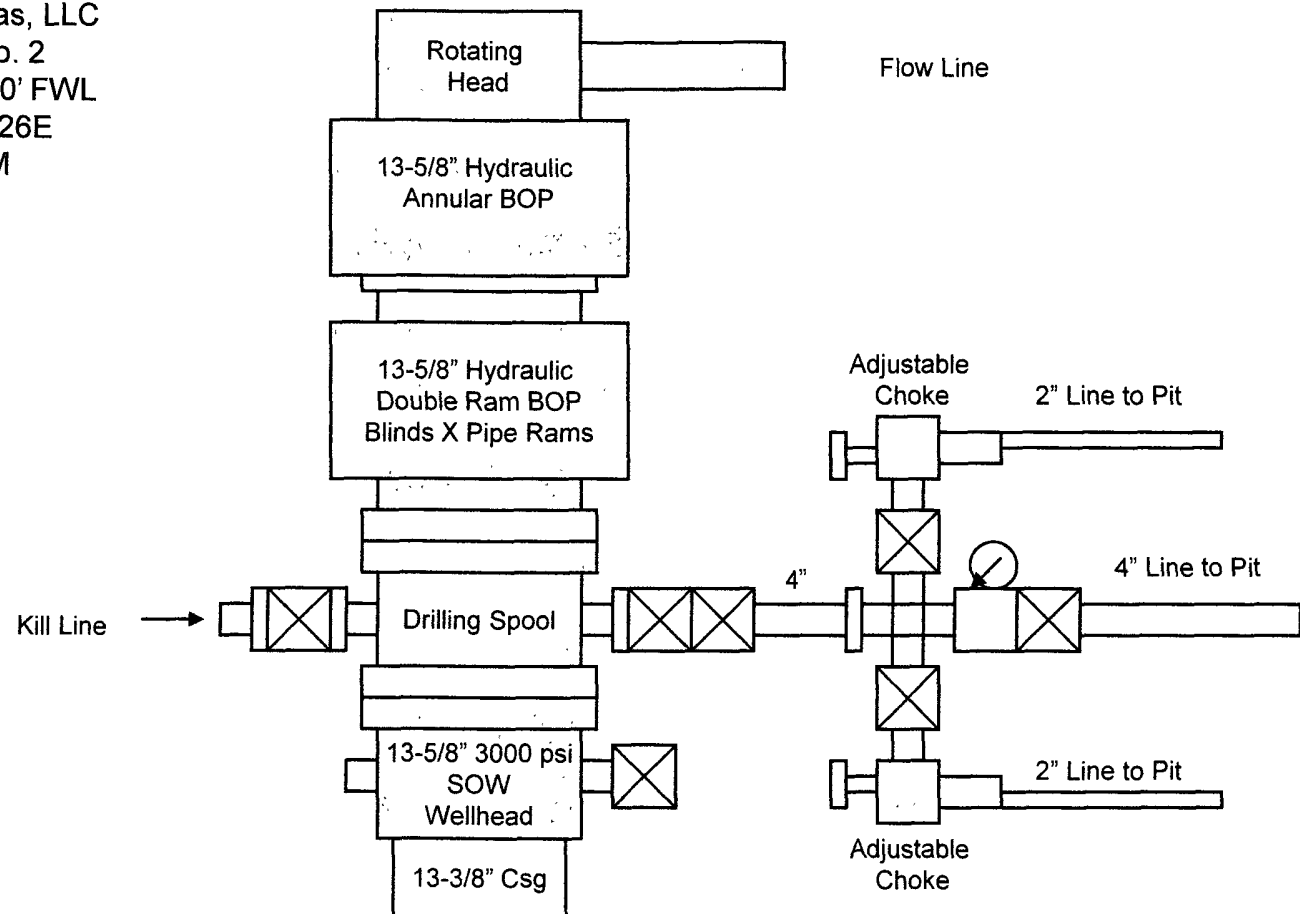
**1980' FSL & 1200' FEL  
Sec. 32, T19S, R26E, UL I  
Eddy County, NM**

**Lakewood 32-2  
Eddy County, New Mexico  
Proposed Wellbore  
30-015-XXXXX**

**TD'd: NA  
Spud: 8/2008**



Rubicon Oil & Gas, LLC  
Lakewood 32 No. 2  
1980' FSL & 1200' FWL  
Sec 32, T19S, R26E  
Eddy County, NM



3000 psi Working Pressure  
BOPE Configuration  
And Choke Manifold

Exhibit "\_\_\_\_"

# Hydrogen Sulfide Drilling Operations Plan

For

Rubicon Oil & Gas, LLC

Lakewood 32, Well #2, Sec 32, T19S, R26E

Undesignated Morrow

Eddy County, New Mexico

## ONE: Hydrogen Sulfide Training

All personnel, whether regularly assigned, contracted or employed on an unscheduled basis has or will receive training from qualified instructors in the following areas prior to working on the drilling operations on this well:

- The hazards & characteristics of H<sub>2</sub>S
- The proper use & maintenance of personal protective equipment and Life support systems;
- The proper use of H<sub>2</sub>S detectors, alarms, warning systems, briefing areas, evacuation procedures & prevailing winds; and,
- The proper techniques of first aid and rescue contact procedures

In addition, the supervisory personnel will be trained in the following areas:

- The effects of H<sub>2</sub>S on metal components. If high tensile tubulars are to be used, personnel will be trained in their special maintenance requirements.
- Corrective action and shut-in procedures when drilling or reworking a well and blowout prevention and well control procedures.
- The contents and requirements of the H<sub>2</sub>S Drilling Operations Plan.

There will be an initial training session just prior to encountering a known or probable H<sub>2</sub>S zone (within 3 days or 500') and periodic H<sub>2</sub>S and well control drills for all personnel in each crew. The initial training session should include a review of the site specific Drilling Operations Plan. This plan is to be available at the well site.

## TWO: H<sub>2</sub>S Safety Equipment and Systems

NOTE: All H<sub>2</sub>S safety equipment and systems will be installed, tested and operational when drilling reaches a depth of 500 feet above, or three days prior to penetration of a known zone containing or reasonably expected to contain H<sub>2</sub>S.

1. Well Control Equipment:
  - Flare line with flare igniter;
  - Choke manifold with one remote hydraulic choke installed;
  - Blind rams & pipe rams to accommodate all pipe sizes with properly sized closing unit;
  - Auxiliary equipment to include an Annular Preventer.