

District I

1625 N. French Dr., Hobbs, NM 88240

District II

1301 W. Grand Avenue, Artesia, NM 88210

District III

1000 Rio Brazos Road, Aztec, NM 87410

District IV

1220 S. St. Francis Dr., Santa Fe, NM 87505

State of New Mexico
Energy Minerals and Natural Resources

Form C-101

May 27, 2004

MAY 27 2004 Oil Conservation Division
1220 South St. Francis Dr.
Santa Fe, NM 87505

Submit to appropriate District Office

☐ AMENDED REPORT
Permit renewal request

APPLICATION FOR PERMIT TO DRILL, RE-ENTER, DEEPEN, PLUGBACK, OR ADD A ZONE

¹ Operator Name and Address: RUBICON OIL & GAS, LLC, 508 W. Wall, Ste. 500, Midland, TX 79701		² OGRID Number: 194266	
³ Property Code 37186		⁴ Property Name Big Johnson	
⁵ API Number 30-015-36347		⁶ Well No. 1	
⁹ Proposed Pool 1: Undesignated Morrow		¹⁰ Proposed Pool 2	

⁷ Surface Location

UL or lot no.	Section	Township	Range	Lot Idn	Feet from the	North/South line	Feet from the	East/West line	County
H	20	18S	26E		1462	North	770	East	Eddy

⁸ Proposed Bottom Hole Location If Different From Surface

UL or lot no.	Section	Township	Range	Lot Idn	Feet from the	North/South line	Feet from the	East/West line	County

Additional Well Information

¹¹ Work Type Code NW	¹² Well Type Code GAS	¹³ Cable/Rotary R	¹⁴ Lease Type Code private	¹⁵ Ground Level Elevation 3406' GR
¹⁶ Multiple No	¹⁷ Proposed Depth 9200'	¹⁸ Formation Morrow	¹⁹ Contractor TBA	²⁰ Spud Date 07/01/2008
Depth to Groundwater: 95'		Distance from nearest fresh water well: 1500'		Distance from nearest surface water: >1000'
Pit: Liner: Synthetic: 12_mils thick Clay <input type="checkbox"/> Pit Volume: 5000_bbls Drilling Method: Closed-Loop System Fresh Water <input checked="" type="checkbox"/> Brine Diesel/Oil-based <input type="checkbox"/> Gas/Air <input type="checkbox"/>				

²¹ Proposed Casing and Cement Program

Hole Size	Casing Size	Casing weight/foot	Setting Depth	Sacks of Cement	Estimated TOC
17.5"	13 3/8"	48#	400'	450 sx	Surface
12 1/4"	8 5/8"	24#	1300'	650 sx	Surface
7 7/8"	4 1/2"	11.6#	9200'	1470 sx	1300'

²² Describe the proposed program. If this application is to DEEPEN or PLUG BACK, give the data on the present productive zone and proposed new productive zone. Describe the blowout prevention program, if any. Use additional sheets if necessary.

Mud Program: 0-400', MW 8.4 ppg FW Native spud mud, 400-4200' MW 8.4-8.6 ppg FW, 4200-9200' MW 9.2-9.7 ppg cutbrine w/starch/polymer added for waterloss starting @ 7800'.

BOPE: Diagram attached, wellbore diagram attached.

H2S: o H2S seen in immediate area. Will have minimum compliance package setup prior to drilling out of 8 5/8" casing.

NOTE: NEW PIT RULE

²³ I hereby certify that the information given above is true and complete to the best of my knowledge and belief. I further certify that the drilling pit will be constructed according to NMOCD guidelines X, a general permit ☐, or an (attached) alternative OCD-approved plan ☐.

Printed name: Ann E. Ritchie

Title: Regulatory Agent

E-mail Address: ann.ritchie@wtor.net

Date: 05/21/2008

Phone: 432 684-6381/683-6565

OIL CONSERVATION DIVISION

Approved by:

Title:

Approval Date: 5/24/08

Expiration Date: 5/24/10

Conditions of Approval Attached ☐

DISTRICT I
1625 N. French Dr., Hobbs, NM 88240
DISTRICT II
1301 W. Grand Avenue, Artesia, NM 88210
DISTRICT III
1000 Rio Brazos Rd., Aztec, NM 87410
DISTRICT IV
1220 S. St. Francis Dr., Santa Fe, NM 87505

State of New Mexico
Energy, Minerals and Natural Resources Department

Form C-102
Revised October 12, 2005

Submit to Appropriate District Office
State Lease - 4 Copies
Fee Lease - 3 Copies

OIL CONSERVATION DIVISION
1220 South St. Francis Dr.
Santa Fe, New Mexico 87505

☐ AMENDED REPORT

WELL LOCATION AND ACREAGE DEDICATION PLAT

API Number <i>30-015-</i>	Pool Code	Pool Name <i>Undesignated, Morrow</i>
Property Code	Property Name BIG JOHNSON	Well Number 1
GRID No. <i>194226</i>	Operator Name RUBICON OIL AND GAS, LLC	Elevation 3406'

Surface Location

UL or lot No. H	Section 20	Township 18 S	Range 26 E	Lot Idn	Feet from the 1462	North/South line NORTH	Feet from the 770	East/West line EAST	County EDDY
--------------------	---------------	------------------	---------------	---------	-----------------------	---------------------------	----------------------	------------------------	----------------

Bottom Hole Location If Different From Surface

UL or lot No.	Section	Township	Range	Lot Idn	Feet from the	North/South line	Feet from the	East/West line	County
Dedicated Acres <i>320</i>	Joint or Infill	Consolidation Code	Order No.						

NO ALLOWABLE WILL BE ASSIGNED TO THIS COMPLETION UNTIL ALL INTERESTS HAVE BEEN CONSOLIDATED
OR A NON-STANDARD UNIT HAS BEEN APPROVED BY THE DIVISION

	OPERATOR CERTIFICATION I hereby certify that the information contained herein is true and complete to the best of my knowledge and belief, and that this organization either owns a working interest or unleased mineral interest in the land including the proposed bottom hole location pursuant to a contract with an owner of such a mineral or working interest, or to a voluntary pooling agreement or a compulsory pooling order heretofore entered by the division. <i>[Signature]</i> <i>5-21-08</i> Signature Date <i>Ann E. Ritchie, Agent</i> Printed Name
	SURVEYOR CERTIFICATION I hereby certify that the well location shown on this plat was plotted from field notes of actual surveys made by me or under my supervision, and that the same is true and correct to the best of my belief. MAY 22 2008 Date Surveyed <i>[Signature]</i> Signature & Seal Professional Surveyor <i>W.G. Jones</i> Certificate No. Gary L. Jones 7977 BASIN SURVEYS

PROPOSED LEASE ROAD 1244.4'

200.0'

AGAVE BPL

YATES BPL

150' NORTH
OFF SET
3405.0'

3404.1'

3401.9'

RUBICON OIL AND GAS, LLC
BIG JOHNSON #1
ELEV. - 3406'

PITS

3405.7'

3403.4'

150' WEST
OFF SET
3408.5'

Lat. -N 32°44'11.70"
Long -W 104°23'52.87"
(NAD-83)

3408.3'

3407.7'

3407.9'

150' SOUTH
OFF SET
3408.0'

STINGER

3408.7'

200

Sheet	1	of	1	Sheets
-------	---	----	---	--------

Basin
SURVEYS

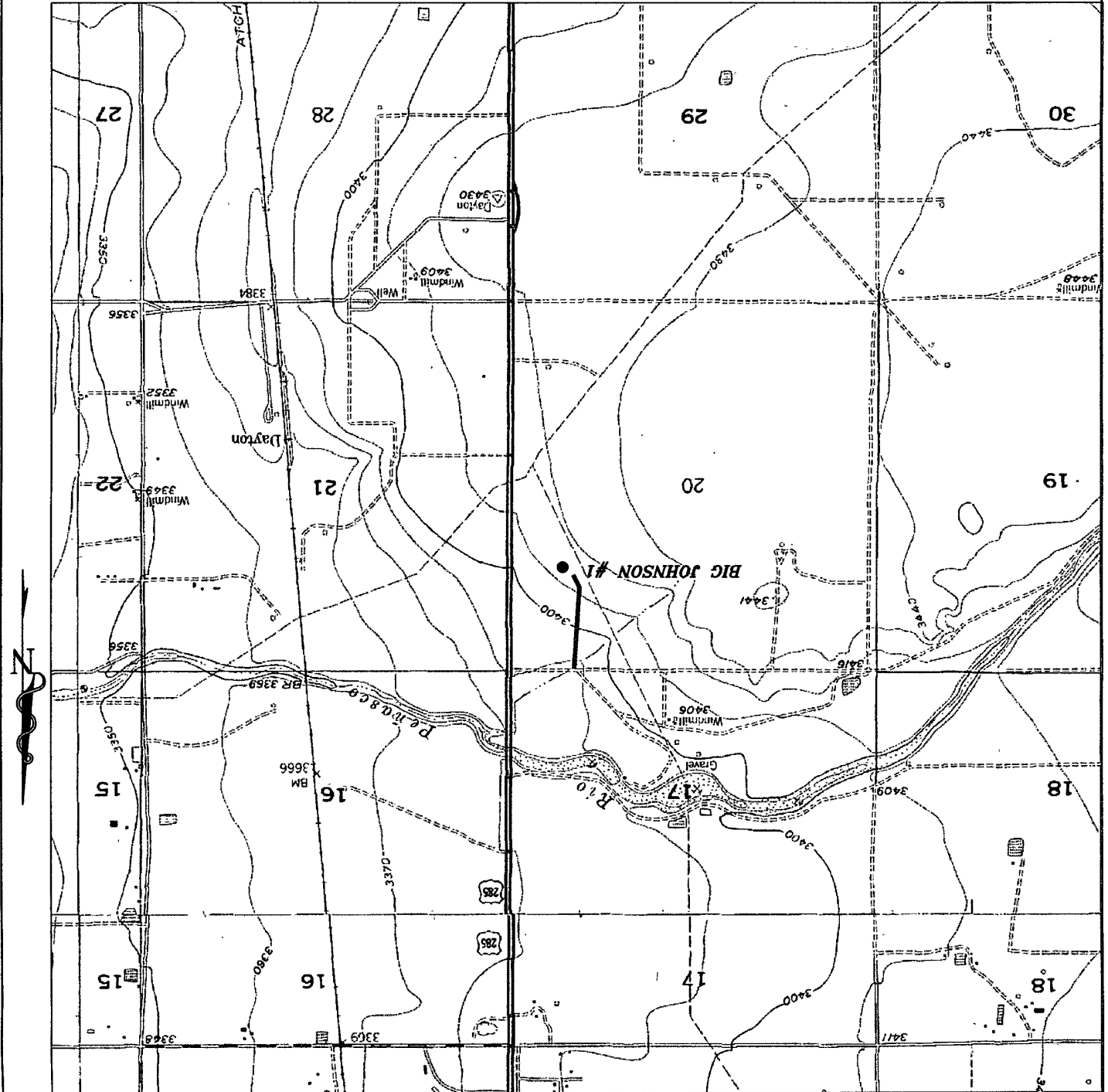
focused on excellence
in the oilfield

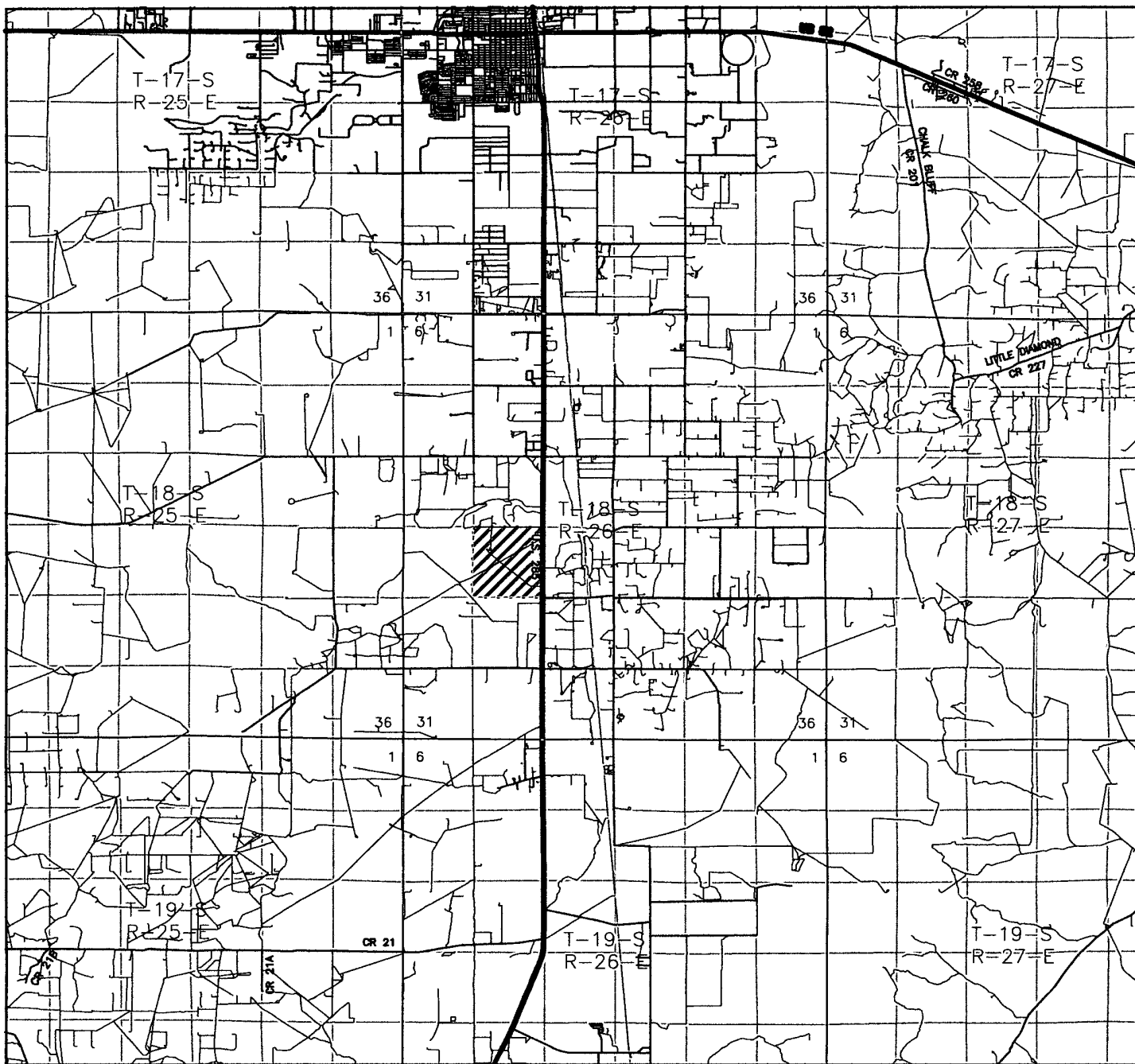
P.O. Box 1786
Hobbs, New Mexico 88241
(505) 393-7316 - Office
(505) 392-3074 - Fax
basinsurveys.com

W.O. Number: JMS 19691
Survey Date: 05-12-2008
Scale: 1" = 2000'
Date: 05-13-2008

**RUBICON OIL
AND GAS, LLC**

BIG JOHNSON #1
Located 1462' FNL and 770' FEL
Section 20, Township 18 South, Range 26 East,
N.M.P.M., Eddy County, New Mexico.





BIG JOHNSON #1
 Located 1462' FNL and 770' FEL
 Section 20, Township 18 South, Range 26 East,
 N.M.P.M., Eddy County, New Mexico.



P.O. Box 1786
 1120 N. West County Rd.
 Hobbs, New Mexico 88241
 (505) 393-7316 - Office
 (505) 392-3074 - Fax
 basinsurveys.com

W.O. Number: JMS 19691

Survey Date: 05-12-2008

Scale: 1" = 2 MILES

Date: 05-13-2008

**RUBICON OIL
 AND GAS, LLC**

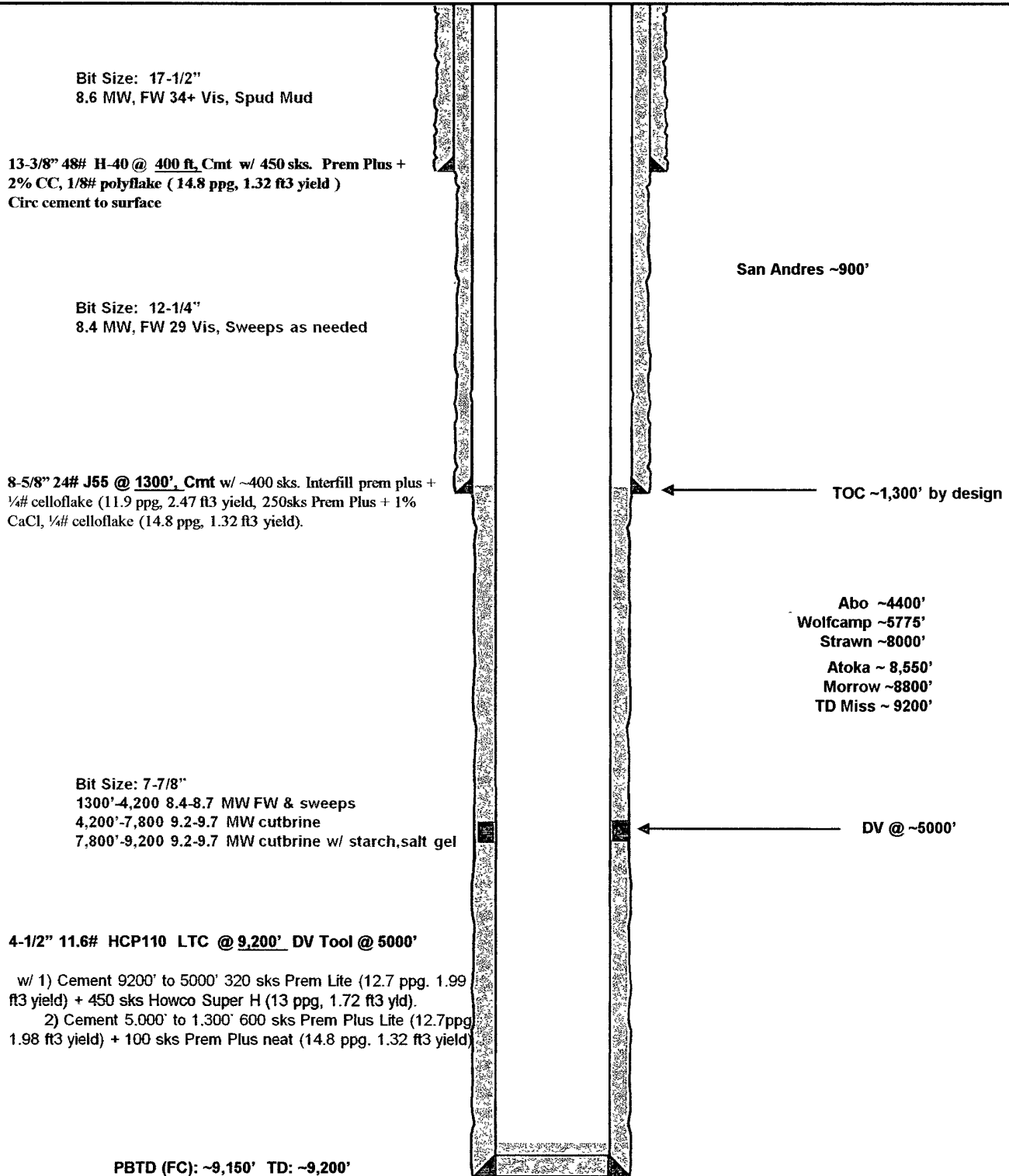
**Rubicon Oil & Gas, LLC
Johnson Prospect**

KB: TBD'
GL: 3406'

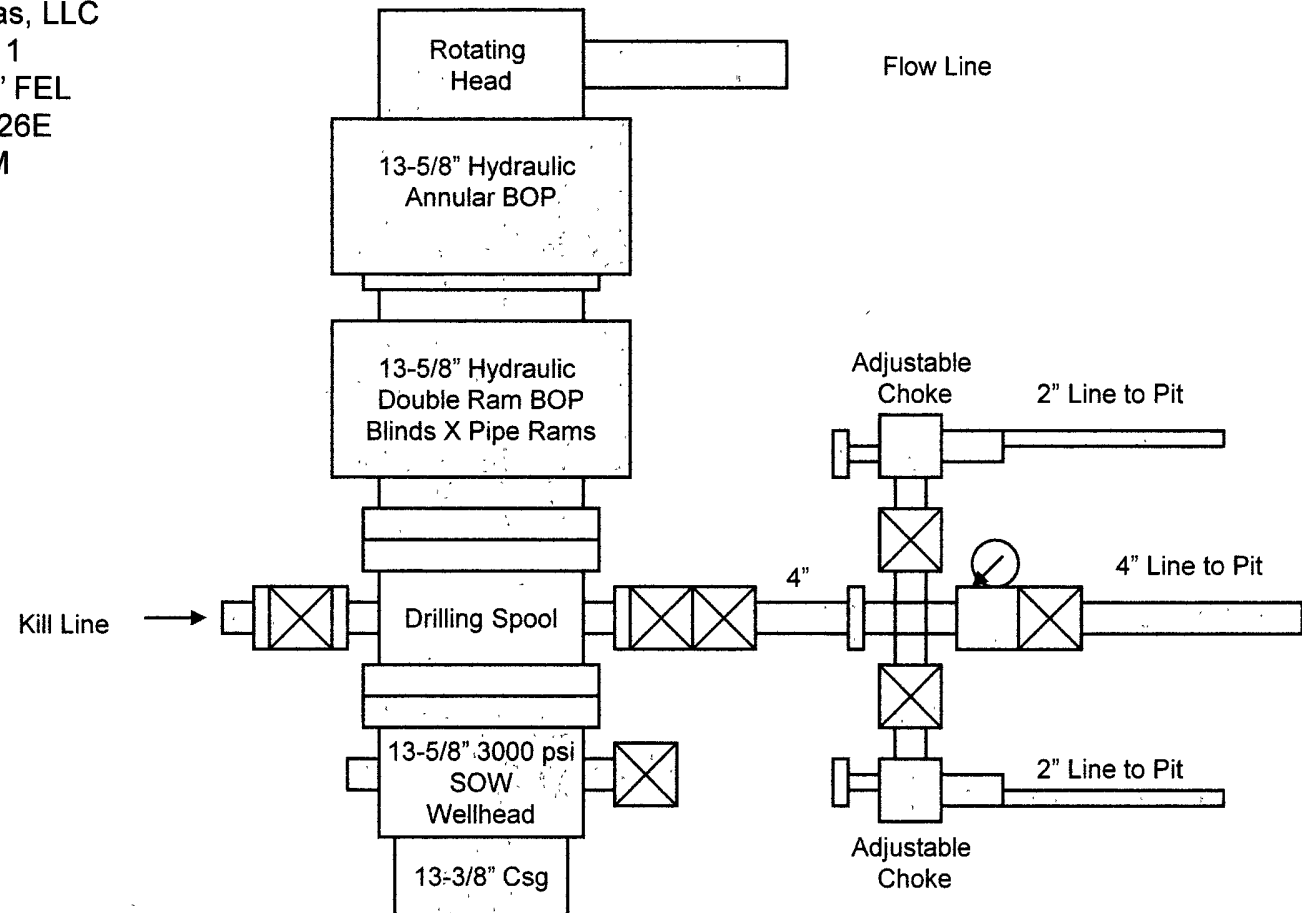
1462' FNL & 770' FEL
Sec. 20, T18S, R26E, UL H
Eddy County, NM

**Big Johnson No. 1
Eddy County, New Mexico
Proposed Wellbore
API # 30-015-XXXX**

TD'd: XX/2008
Spud: 7/2008



Rubicon Oil & Gas, LLC
Big Johnson No. 1
1462' FNL & 770' FEL
Sec 20, T18S, R26E
Eddy County, NM



3000 psi Working Pressure
BOPE Configuration
And Choke Manifold

Exhibit "___"

Hydrogen Sulfide Drilling Operations Plan

For

Rubicon Oil & Gas, LLC

Big Johnson #1, Sec 20, T18S, R26E

Undesignated Morrow

Eddy County, New Mexico

ONE: Hydrogen Sulfide Training

All personnel, whether regularly assigned, contracted or employed on an unscheduled basis has or will receive training from qualified instructors in the following areas prior to working on the drilling operations on this well:

- The hazards & characteristics of H₂S

- The proper use & maintenance of personal protective equipment and Life support systems;

- The proper use of H₂S detectors, alarms, warning systems, briefing areas, evacuation procedures & prevailing winds; and,

- The proper techniques of first aid and rescue contact procedures

In addition, the supervisory personnel will be trained in the following areas:

- The effects of H₂S on metal components. If high tensile tubulars are to be used, personnel will be trained in their special maintenance requirements.

- Corrective action and shut-in procedures when drilling or reworking a well and blowout prevention and well control procedures.

- The contents and requirements of the H₂S Drilling Operations Plan.

There will be an initial training session just prior to encountering a known or probable H₂S zone (within 3 days or 500') and periodic H₂S and well control drills for all personnel in each crew. The initial training session should include a review of the site specific Drilling Operations Plan. This plan is to be available at the well site.

TWO: H₂S Safety Equipment and Systems

NOTE: All H₂S safety equipment and systems will be installed, tested and operational when drilling reaches a depth of 500 feet above, or three days prior to penetration of a known zone containing or reasonably expected to contain H₂S.

1. Well Control Equipment:

- Flare line with flare igniter;

- Choke manifold with one remote hydraulic choke installed;

- Blind rams & pipe rams to accommodate all pipe sizes with properly sized closing unit;

- Auxiliary equipment to include an Annular Preventer.