

District I  
1625 N. French Dr., Hobbs, NM 88240  
District II  
1301 W. Grand Avenue, Artesia, NM 88210  
District III  
1000 Rio Brazos Road, Aztec, NM 87410  
District IV  
1220 S. St. Francis Dr., Santa Fe, NM 87505

State of New Mexico  
Energy Minerals and Natural Resources

Form C-101  
May 27, 2004

MAY 23 2008  
Oil Conservation Division  
220 South St. Francis Dr.  
Santa Fe, NM 87505  
OCD-ARTESIA

Submit to appropriate District Office

☐ AMENDED REPORT

APPLICATION FOR PERMIT TO DRILL, RE-ENTER, DEEPEN, PLUGBACK, OR ADD A ZONE

<sup>1</sup> Operator Name and Address RKI EXPLORATION & PRODUCTION, LLC. 3817 NW EXPRESSWAY SUITE 950 OKLAHOMA CITY, OKLAHOMA 73112		<sup>4</sup> OGRID Number 246289
<sup>2</sup> Property Code 36900	<sup>3</sup> Property Name RDX "16"	<sup>5</sup> API Number 30-015-36384
<sup>6</sup> Proposed Pool 1 WILDCAT-BONE SPRING		<sup>7</sup> Proposed Pool 2

<sup>7</sup> Surface Location

UL or lot no.	Section	Township	Range	Lot Idn	Feet from the	North/South line	Feet from the	East/West line	County
P	16	26S	30E		990'	SOUTH	990'	EAST	EDDY

<sup>8</sup> Proposed Bottom Hole Location If Different From Surface

UL or lot no.	Section	Township	Range	Lot Idn	Feet from the	North/South line	Feet from the	East/West line	County

Additional Well Information

<sup>11</sup> Work Type Code N	<sup>12</sup> Well Type Code O	<sup>13</sup> Cable/Rotary ROTARY	<sup>14</sup> Lease Type Code S	<sup>15</sup> Ground Level Elevation 3082'
<sup>16</sup> Multiple NO	<sup>17</sup> Proposed Depth 8350'	<sup>18</sup> Formation BONE SPRING	<sup>19</sup> Contractor PERMIAN DRILLING	<sup>20</sup> Spud Date WHEN APPROVED
Depth to Groundwater 150+		Distance from nearest fresh water well 1.5 Mi NW		Distance from nearest surface water Red-Bluff Lake 7 Mi southwest
Pit: Liner: Synthetic <input type="checkbox"/> _____ mils thick Clay <input type="checkbox"/> Pit Volume: _____ bbls Drilling Method: Closed-Loop System <input checked="" type="checkbox"/> Fresh Water <input checked="" type="checkbox"/> Brine <input checked="" type="checkbox"/> Diesel/Oil-based <input type="checkbox"/> Gas/Air <input type="checkbox"/>				

<sup>21</sup> Proposed Casing and Cement Program

Hole Size	Casing Size	Casing weight/foot	Setting Depth	Sacks of Cement	Estimated TOC
26"	20"	Conductor	40'	Redi-mix	Surface
17 1/2"	13 3/8"	54.5#	450'	401 Sx.	Surface
11"	8 5/8"	32#	3300'	889 Sx.	Surface
7 7/8"	5 1/2"	17#	8350'	459' Sx.	2100' FS

<sup>22</sup> Describe the proposed program. If this application is to DEEPEN or PLUG BACK, give the data on the present productive zone and proposed new productive zone. Describe the blowout prevention program, if any. Use additional sheets if necessary.

NOTE: NEW PIT RULE 19.15.17  
NMAC.

SEE ATTACHED SI For use of closed loop system-  
complete new form C-144.

**NOTE:** New Pit Rule  
NMAC 19-15-17

<sup>23</sup> I hereby certify that the information given above is true and complete to the best of my knowledge and belief. I further certify that the drilling pit will be constructed according to NMOCD guidelines ☒, a general permit ☐, or an (attached) alternative OCD-approved plan ☐.

Printed name: Joe T. Janica

Title: Permit Engineer

E-mail Address: joejanica@valornet.com

Date: 05/22/08

Phone: 575-391-8503

OIL CONSERVATION DIVISION

Approved by:

Title:

Approval Date: 6/16/08

Expiration Date: 6/16/10

Conditions of Approval Attached ☐

1. Drill 26" hole to 40'. Set 40' of 20" conductor pipe and cement to surface with Redi-mix.
2. Drill 17½" hole to 450'. Run and set 450' of 13 3/8" 54.5# J-55 ST&C casing. cement with 201 Sx. of 35/65 Class "C" POZ + 6% Bentonite, + 5# Gilsonite/Sx. + .125# Celoflake/Sx + 3% CaCl, Yield 1.95. tail in with 200 Sx. of Class "C" cement + 2% CaCl, + .125# Celoflakes/Sx. Yield 1.34, circulate cement to surface.
3. Drill 11" hole to 3301'. Run and set 3301' of 8 5/8" 32# J-55 ST&C casing. Cement with 689 Sx. 35/65 POZ Class "C" POZ + 5% Salt, + 6% Bentonite, + 4#/Sx of Gilsonite, + .125#/Sx. of polyflakes. Yield 2.04 Tail in with 200 Sx. of Class "C" cement + 1% CaCl, + .125#/Sx. of polyflakes. Yield 1.33, circulate cement.
4. Drill 7 7/8" hole to 8350'. Run and set 8350' of 5½" 17# J-55 LT&C casing. Cement with 259 Sx. of 40/60 (CemPlus blend/LITEFIL(243/CF), + .3% TIC DISPERSANT, + 1% Antisettling agent, + .4% Midtemp Retarder, + .125#/Sx polyflakes, + .2% antifoamer. Yield 2.32. Tail in with 200 Sx. of 40/60 (ChemPlus Blend/LITEFIL(24#/CF) + .3% Tic Dispersant, + 1% Anti Settling Agent, + .2% Antifoamer, + .4% Midtemp Retarder, + .125#/Sx. of polyflakes. Yield 2.00. Estimate TOC 2075' from surface.

DISTRICT I  
1625 N. French Dr., Hobbs, NM 88240  
DISTRICT II  
1301 W. Grand Avenue, Artesia, NM 88210

State of New Mexico  
Energy, Minerals and Natural Resources Department

Form C-102  
Revised October 12, 2005

Submit to Appropriate District Office  
State Lease - 4 Copies  
Fee Lease - 3 Copies

OIL CONSERVATION DIVISION  
1220 South St. Francis Dr.  
Santa Fe, New Mexico 87505

DISTRICT III  
1000 Rio Brazos Rd., Aztec, NM 87410  
DISTRICT IV  
1220 S. St. Francis Dr., Santa Fe, NM 87505

☐ AMENDED REPORT

WELL LOCATION AND ACREAGE DEDICATION PLAT

API Number	Pool Code <b>96403</b>	Pool Name WILDCAT-BONE SPRING
Property Code <b>36900</b>	Property Name RDX "16"	Well Number 3
OGRID No. 246289	Operator Name RKI EXPLORATION & PRODUCTION	Elevation 3082'

Surface Location

UL or lot No.	Section	Township	Range	Lot Idn	Feet from the	North/South line	Feet from the	East/West line	County
P	16	26 S	30 E		990	SOUTH	990	EAST	EDDY

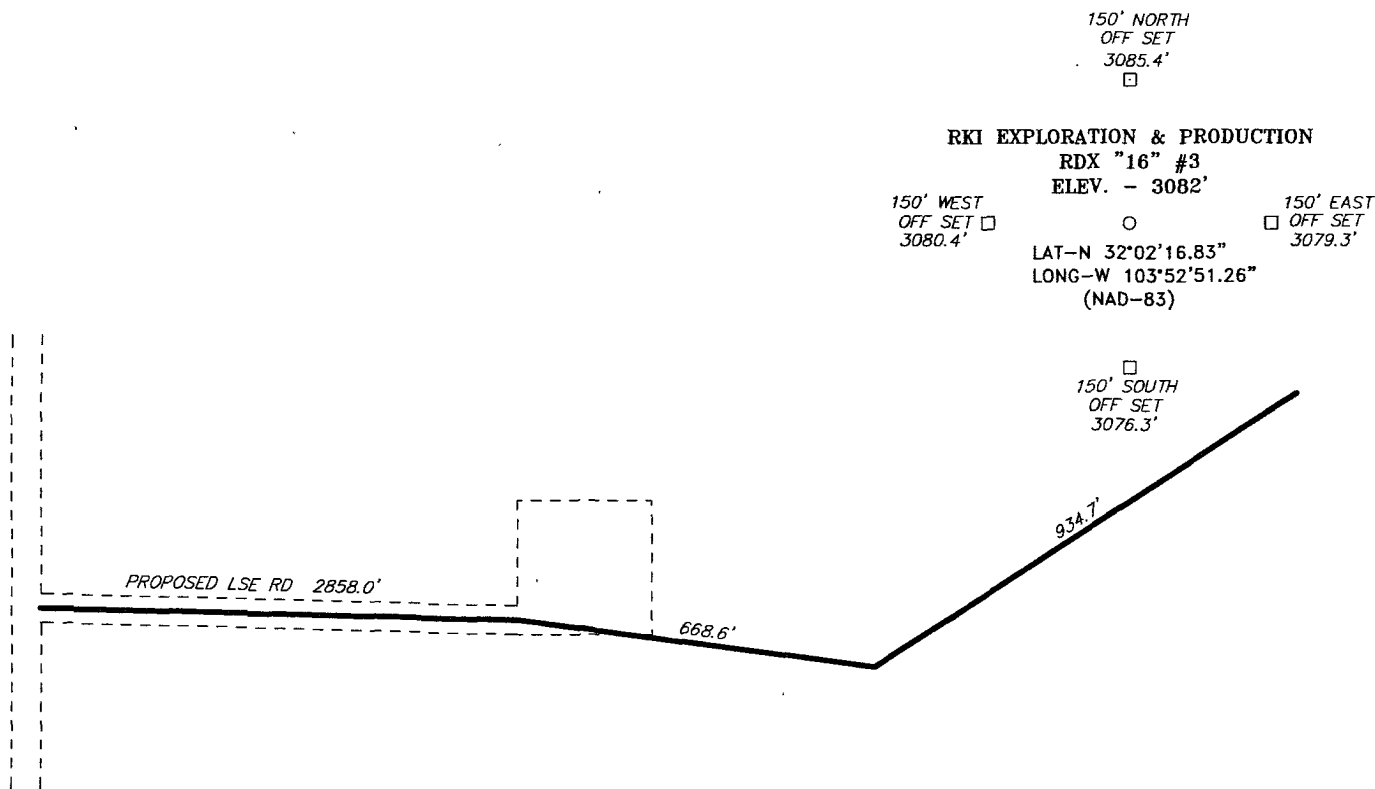
Bottom Hole Location If Different From Surface

UL or lot No.	Section	Township	Range	Lot Idn	Feet from the	North/South line	Feet from the	East/West line	County
Dedicated Acres 40	Joint or Infill	Consolidation Code	Order No.						

NO ALLOWABLE WILL BE ASSIGNED TO THIS COMPLETION UNTIL ALL INTERESTS HAVE BEEN CONSOLIDATED  
OR A NON-STANDARD UNIT HAS BEEN APPROVED BY THE DIVISION

<div style="border: 1px dashed black; width: 100%; height: 100%; position: relative;"><div style="position: absolute; bottom: 10px; right: 10px; border: 1px solid black; padding: 5px;"><p>VA-2542</p><p>990'</p><p>990'</p></div></div> <div style="position: absolute; bottom: 10px; right: 10px; border: 1px solid black; padding: 5px;"><p><u>SURFACE LOCATION</u> LAT N.: 32°02'16.83" LONG W.: 103°52'51.26" N.: 377859.3 SPC-E.: 681527.5 (NAD-83)</p></div>	<p><b>OPERATOR CERTIFICATION</b></p> <p>I hereby certify that the information contained herein is true and complete to the best of my knowledge and belief, and that this organization either owns a working interest or unleased mineral interest in the land including the proposed bottom hole location pursuant to a contract with an owner of such a mineral or working interest, or to a voluntary pooling agreement or a compulsory pooling order heretofore entered by the division.</p> <p><i>Joe T. Janica</i> Signature Date Joe T. Janica 05/22/08 Printed Name</p>
	<p><b>SURVEYOR CERTIFICATION</b></p> <p>I hereby certify that the well location shown on this plat was plotted from field notes of actual surveys made by me or under my supervision, and that the same is true and correct to the best of my belief.</p> <p>MAY 6, 2008</p> <p>Date Surveyed Signature &amp; Seal of Professional Surveyor <i>[Signature]</i> W.O. No. 19601 Certificate No. Gary L. Jones 7977 BASIN SURVEYS</p>

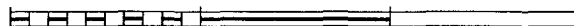
SECTION 16, TOWNSHIP 26 SOUTH, RANGE 30 EAST, N.M.P.M.,  
EDDY COUNTY, NEW MEXICO.



DIRECTIONS TO LOCATION:

FROM THE JUNCTION OF HWY 285 AND WHITETHORN,  
GO EAST AND FOLLOW EPNG PIPELINE FOR 10.4  
MILES, TURN SOUTH FOR 1.9 MILES, THENCE TURN  
EAST FOR 0.6 MILES TO PROPOSED LEASE ROAD.

200 0 200 400 FEET



SCALE: 1" = 200'

**BASIN SURVEYS** P.O. BOX 1786 - HOBBS, NEW MEXICO

W.O. Number: 19601 Drawn By: J. M. SMALL

Date: 05-07-2008 Disk: JMS 19601

**RKI EXPLORATION & PRODUCTION**

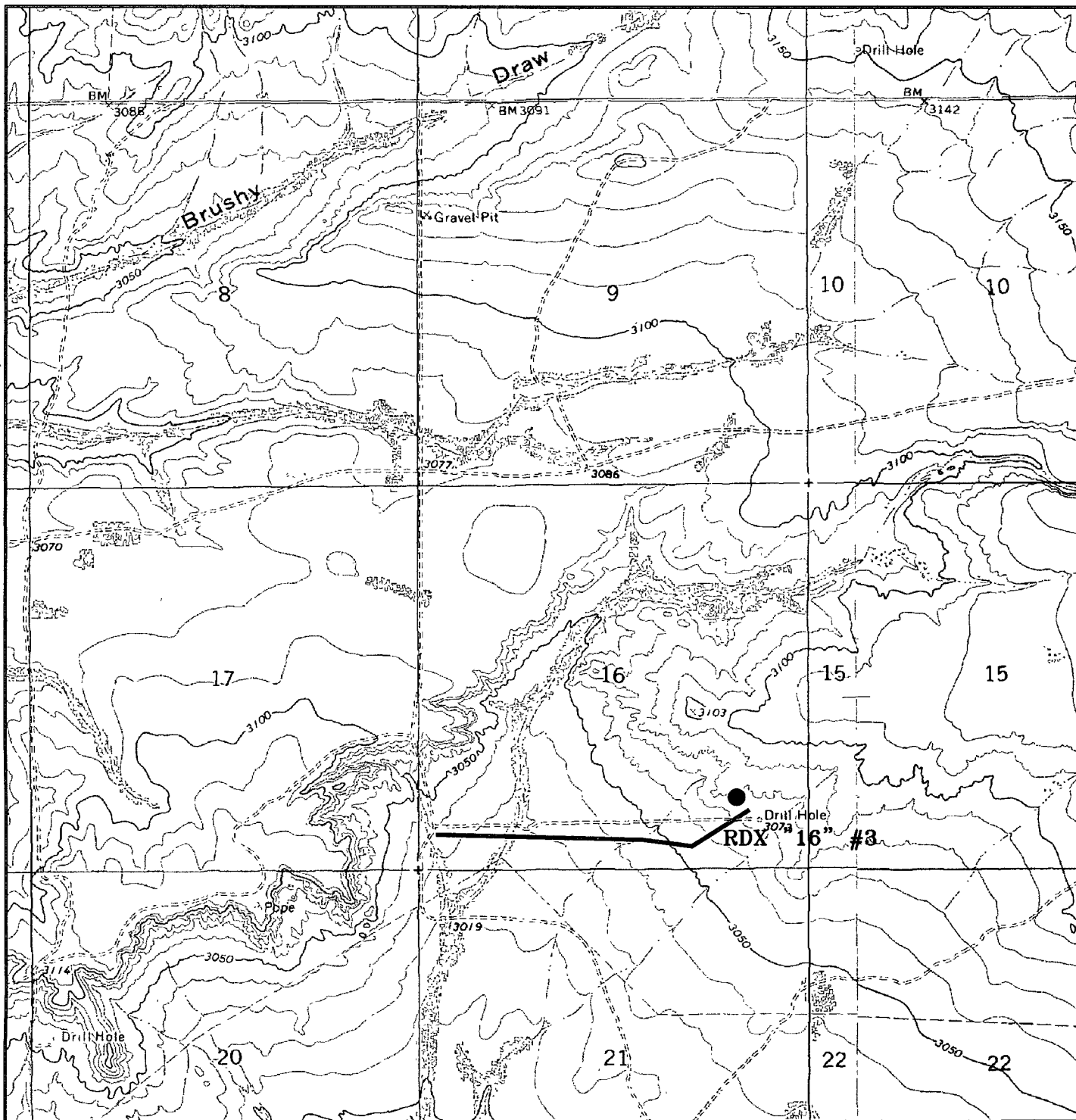
REF: RDX "16" #3 / Well Pad Topo

THE RDX "16" #3 LOCATED 990' FROM

THE SOUTH LINE AND 990' FROM THE EAST LINE OF  
SECTION 16, TOWNSHIP 26 SOUTH, RANGE 30 EAST,

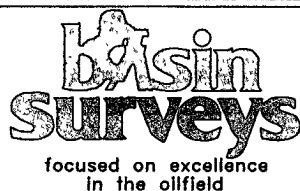
N.M.P.M., EDDY COUNTY, NEW MEXICO.

Survey Date: 05-06-2008 Sheet 1 of 1 Sheets



### RDX "16" #3

Located at 990' FSL AND 990' FEL  
Section 16, Township 26 South, Range 30 East,  
N.M.P.M., Eddy County, New Mexico.



P.O. Box 1786  
1120 N. West County Rd.  
Hobbs, New Mexico 88241  
(505) 393-7316 - Office  
(505) 392-3074 - Fax  
basinsurveys.com

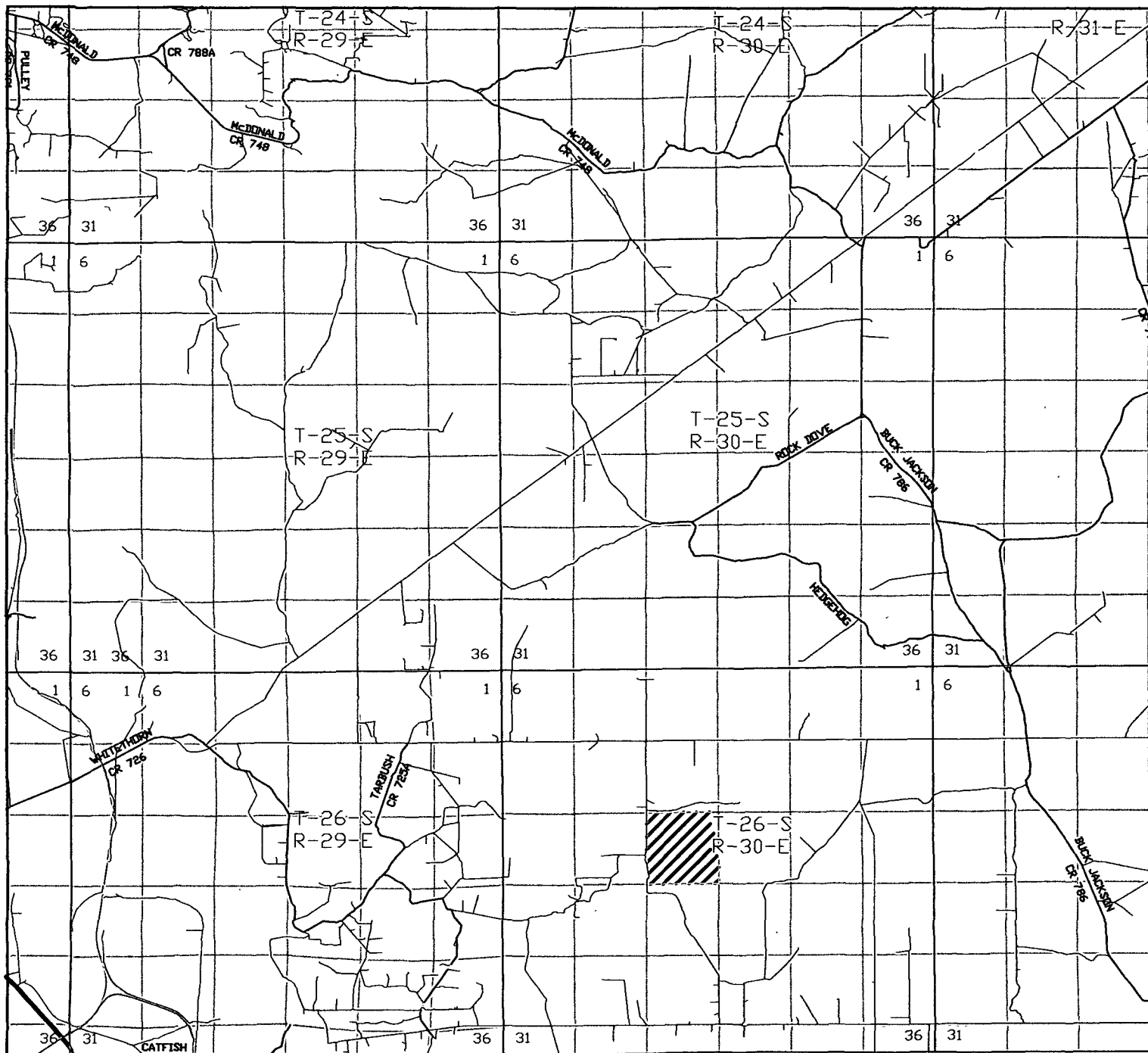
W.O. Number: 19601

Survey Date: 05-06-2008

Scale: 1" = 2000'

Date: 05-07-2008

**RKI**  
**EXPLORATION &**  
**PRODUCTION**



RDX "16" #3

Located at 990' FSL and 990' FEL  
Section 16, Township 26 South, Range 30 East,  
N.M.P.M., Eddy County, New Mexico.

**basin**  
**surveys**  
focused on excellence  
in the oilfield

P.O. Box 1786  
1120 N. West County Rd.  
Hobbs, New Mexico 88241  
(505) 393-7316 - Office  
(505) 392-3074 - Fax  
basinsurveys.com

W.O. Number: JMS 19601

Survey Date: 05-06-2008

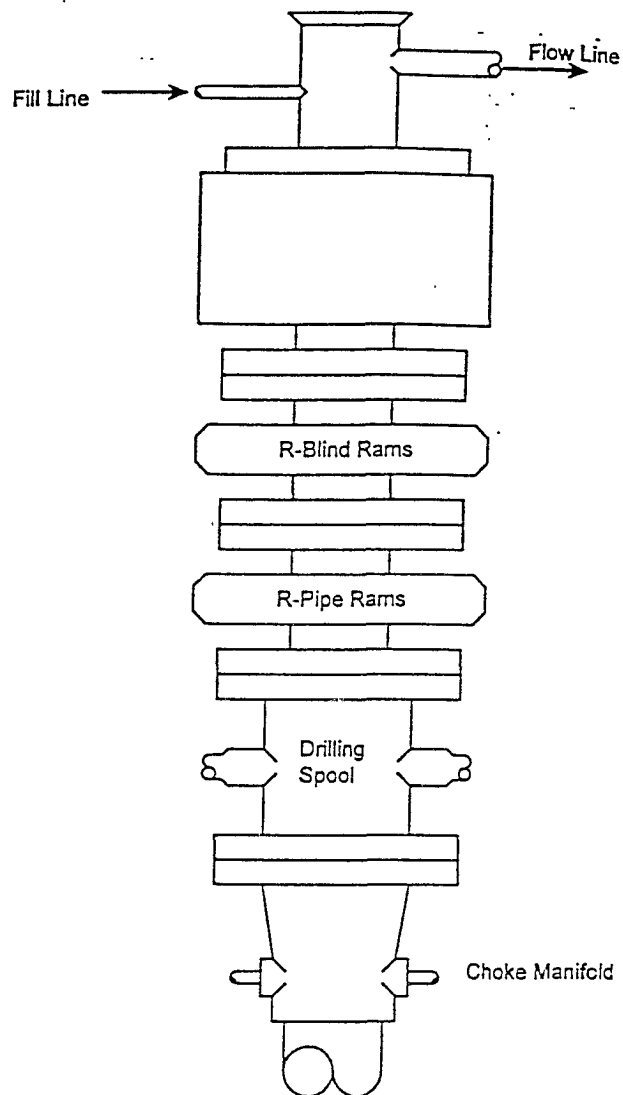
Scale: 1" = 2 MILES

Date: 05-07-2008

RKI  
EXPLORATION &  
PRODUCTION

# BLOWOUT PREVENTER SYSTEM

3000 PSI



Type 900 SERIES  
3000 PSI WP

## Choke Manifold Assembly for 5M WP System

