

UNITED STATES
DEPARTMENT OF THE INTERIOR
BUREAU OF LAND MANAGEMENT

OCD-ARTESIA

FORM APPROVED
OMB NO. 1004-0137
Expires: March 31, 2007

WELL COMPLETION OR RECOMPLETION REPORT AND LOG

ACCEPTED FOR RECORD									
1a Type of Well <input type="checkbox"/> Oil Well <input checked="" type="checkbox"/> Gas Well <input type="checkbox"/> Dry <input type="checkbox"/> Other									
b Type of Completion <input type="checkbox"/> New Well <input type="checkbox"/> Work Over <input type="checkbox"/> Deepen <input checked="" type="checkbox"/> Plug Back <input type="checkbox"/> Diff Resvr, Other _____									
2 Name of Operator BEPCO, L.P.									
3 Address P.O. BOX 2760 MIDLAND TX 79702-2760									
4 Location of Well (Report location clearly and in accordance with Federal requirements)* At Surface UL K, 1980' FSL, 1980' FWL, LAT. N 32.5072 DEG, LONG W 104.1113 At top prod interval reported below SAME At total depth SAME									
14 Date Spudded 06/10/2008									
15 Date T D Reached 06/21/2008									
16 Date Completed <input type="checkbox"/> D & A <input checked="" type="checkbox"/> Ready to Prod. 06/21/2008									
17 Elevations (DF, RKB, RT, GL)* 3191' GL									
18 Total Depth MD 12017' TVD									
19 Plug Back T D MD 11451' TVD									
20 Depth Bridge Plug Set MD 11451' TVD									
21 Type of Electric & Other Mechanical Logs Run (Submit copy of each) NONE									
22. Was well cored? <input checked="" type="checkbox"/> No <input type="checkbox"/> Yes (Submit analysis) Was DST run? <input checked="" type="checkbox"/> No <input type="checkbox"/> Yes (Submit analysis) Directional Survey? <input checked="" type="checkbox"/> No <input type="checkbox"/> Yes (Submit copy)									
23 Casing and Liner Record (Report all strings set in well)									
Hole Size	Size/Grade	Wt (#/ft)	Top (MD)	Bottom (MD)	Stage Cementer Depth	No of Sks & Type of Cement	Slurry Vol (BBL)	Cement Top*	Amount Pulled
17-1/2"	13-3/8"	48/54.5#	0'	826'		795		0'	
12-1/4"	9-5/8"	36#	0'	2535'		1575		0' TOP OUT	
8-3/4"	5-1/2"	17#	0'	12016'	8514'	2360		3785' CALC.	
					3558'	590		0' CIRC.	
24 Tubing Record									
Size	Depth Set (MD)	Packer Depth (MD)	Size	Depth Set (MD)	Packer Depth (MD)	Size	Depth Set (MD)	Packer Depth (MD)	
2-3/8"	10872'	10850'							
25 Producing Intervals									
26 Perforation Record									
Formation	Top	Bottom	Perforated Interval	Size	No Holes	Perf Status			
A) ATOKA	10723'	11175'	10941'-54'	0.380	72	PRODUCING			
B) MORROW	11176'	12019'	11498'-11656'	0.380	58	BENEATH CIBP @			
C)						11466'			
D)									
27 Acid, Fracture, Treatment, Cement Squeeze, Etc									
Depth Interval									
Amount and Type of Material									
10941'-54'									
ACIDIZED W/ 2500 GALS OF 7.5% NEFE HCL									
11498'-11656'									
SET 2-3/8" ALPHA 10K CIBP IN TBG SUB @ 11466' TO TEMPORARILY ZONE ABANDON PERFS									
28 Production - Interval A									
Date First Produced	Test Date	Hours Tested	Test Production	Oil BBL	Gas MCF	Water BBL	Oil Gravity Corr API	Gas Gravity	Production Method
6/21/08	6/24/08	24	→	0	163	0			
Choke Size	Tbg Press Flwg SI	Csg Press	24 Hr Rate	Oil BBL	Gas MCF	Water BBL	Gas Oil Ratio	Well Status	
W/O	515	0	→				NA	Producing	
Production - Interval B									
Date First Produced	Test Date	Hours Tested	Test Production	Oil BBL	Gas MCF	Water BBL	Oil Gravity Corr API	Gas Gravity	Production Method
			→						
Choke Size	Tbg Press Flwg SI	Csg Press	24 Hr Rate	Oil BBL	Gas MCF	Water BBL	Gas Oil Ratio	Well Status	
			→						

(See Instructions and spaces for additional data on page 2)

FLOWING
ACCEPTED FOR RECORD
JUL 16 2008
JERRY FANT
PETROLEUM GEOLOGIST

28b. Production - Interval C

Date First Produced	Test Date	Hours Tested	Test Production	Oil BBL	Gas MCF	Water BBL	Oil Gravity Corr API	Gas Gravity	Production Method
			→						
Choke Size	Tbg Press Flwg SI	Csg Press	24 Hr. Rate	Oil BBL	Gas MCF	Water BBL	Gas Oil Ratio	Well Status	
			→						

28c. Production - Interval D

Date First Produced	Test Date	Hours Tested	Test Production	Oil BBL	Gas MCF	Water BBL	Oil Gravity Corr API	Gas Gravity	Production Method
			→						
Choke Size	Tbg Press Flwg SI	Csg Press	24 Hr. Rate	Oil BBL	Gas MCF	Water BBL	Gas Oil Ratio	Well Status	
			→						

29 Disposition of Gas (Sold, used for fuel, vented, etc.)

SOLD

30 Summary of Porous Zones (Include Aquifers)

Show all important zones or porosity and contents thereof. Cored intervals and all drill-stem tests, including depth interval tested, cushion used, time tool open, flowing and shut-in pressures and recoveries

31 Formation (Log) Markers

Formation	Top	Bottom	Descriptions, Contents, etc	Name	Top
					Meas Depth
				T/RUSTLER	378'
				T/CAPITAN REEF	1880'
				T/DELAWARE MTN. GROUP	2770'
				T/BONE SPRING LIME	5757'
				T/WOLFCAMP	9252'
				T/STRAWN	10436'
				T/ATOKA	10723'
				T/MORROW	11176'
				T/MISSISSIPPIAN	12020'

32 Additional remarks (include plugging procedure)

33 Indicate which items have been attached by placing a check in the appropriate boxes

- ☒ Electrical/Mechanical Logs (1 full set req'd)
 ☐ Geological Report
 ☐ DST Report
 ☐ Directional Survey
☐ Sundry Notice for plugging and cement verification
 ☐ Core Analysis
 ☐ Other

34 I hereby certify that the foregoing and attached information is complete and correct as determined from all available records (see attached instructions)*

Name (please print) Ann MooreTitle PRODUCTION CLERK

Signature

Ann MooreDate 06/27/2008

Title 18 U.S.C. Section 101 and Title 43 U.S.C. Section 1212, make it a crime for any person knowingly and willfully to make to any department or agency of the United States and false, fictitious or fraudulent statements or representations as to any matter within its jurisdiction.

DISTRICT I
1625 N. French Dr., Hobbs, NM 88240

DISTRICT II
1301 W. Grand Avenue, Artesia, NM 88210

DISTRICT III
1000 Rio Brazos Ed., Artec, NM 87410

DISTRICT IV
1220 St. Francis Dr., Santa Fe, NM 87505

State of New Mexico
Energy, Minerals and Natural Resources Department

Form C-102
Revised October 12, 2006

Submit to Appropriate District Office
State Lease - 4 Copies
Fee Lease - 3 Copies

OIL CONSERVATION DIVISION

1220 South St. Francis Dr.
Santa Fe, New Mexico 87505

☐ AMENDED REPORT

WELL LOCATION AND ACREAGE DEDICATION PLAT

API Number 30-015-35251	Pool Code NA	Pool Name Undesignated (Atoka)
Property Code 001776	Property Name BIG EDDY UNIT	Well Number 165
OGRID No. 001801	Operator Name BEPCO, L.P.	Elevation 3191'

Surface Location

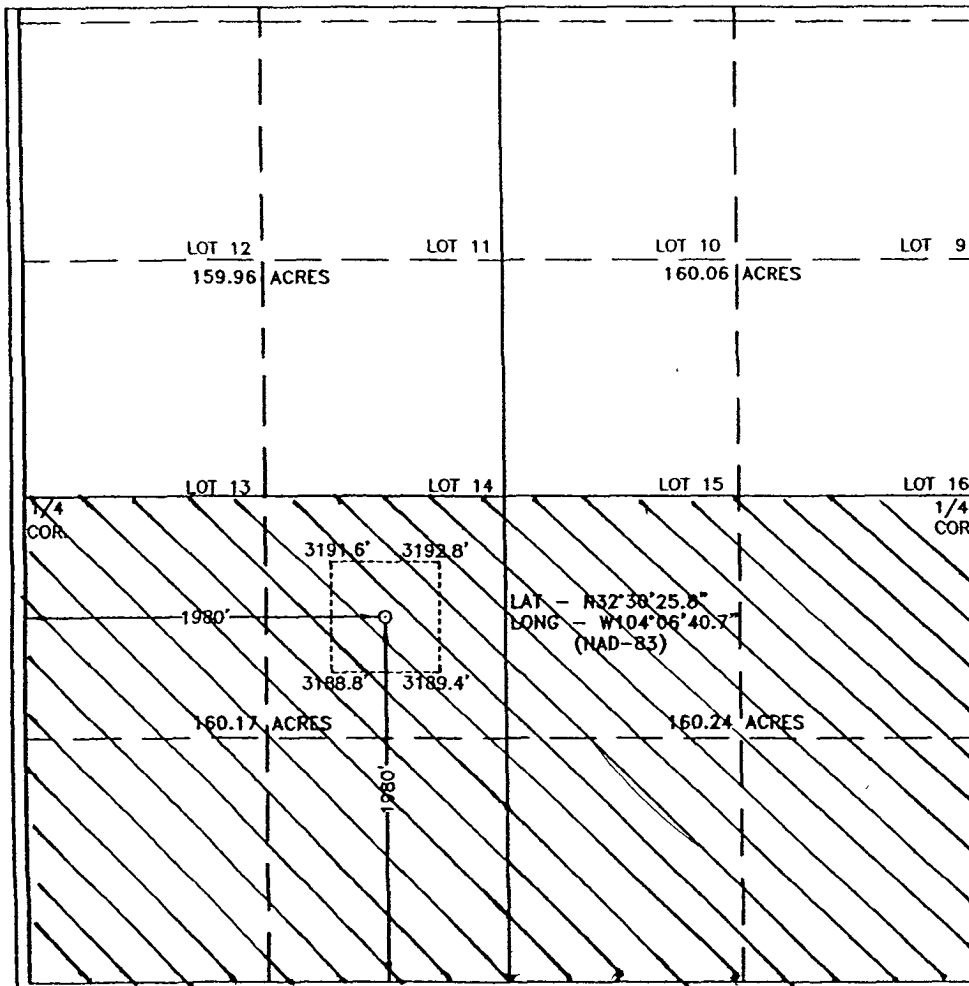
UL or lot No.	Section	Township	Range	Lot Idn	Feet from the	North/South line	Feet from the	East/West line	County
S	5	21 S	28 E		1980	SOUTH	1980	WEST	EDDY

Bottom Hole Location If Different From Surface

UL or lot No.	Section	Township	Range	Lot Idn	Feet from the	North/South line	Feet from the	East/West line	County

Dedicated Acres	Joint or Infill	Consolidation Code	Order No.
320	N		

NO ALLOWABLE WILL BE ASSIGNED TO THIS COMPLETION UNTIL ALL INTERESTS HAVE BEEN CONSOLIDATED
OR A NON-STANDARD UNIT HAS BEEN APPROVED BY THE DIVISION



OPERATOR CERTIFICATION

I hereby certify that the information contained herein is true and complete to the best of my knowledge and belief, and that this organization either owns a working interest or unleased mineral interest in the land including the proposed bottom hole location pursuant to a contract with an owner of such a mineral or working interest, or to a voluntary pooling agreement or a compulsory pooling order heretofore entered by the division.

Gary E. Gerhard 9/13/06
Signature Date

Gary E. Gerhard
Printed Name

SURVEYOR CERTIFICATION

I hereby certify that the well location shown on this plat was plotted from field notes of actual surveys made by me or under my supervision, and that the same is true and correct to the best of my belief.

DATE SURVEYED
JULY 08, 2006
SIGNATURE OF PROFESSIONAL SURVEYOR
[Signature]
CERTIFICATE NO.
7977
BASIN SURVEYS