



UNITED STATES  
DEPARTMENT OF THE INTERIOR  
BUREAU OF LAND MANAGEMENT

FORM APPROVED  
OMB NO. 1004-0137  
Expires March 31, 2007

**SUNDRY NOTICES AND REPORTS ON WELLS**

**Do not use this form for proposals to drill or to re-enter an abandoned well. Use Form 3160-3 (APD) for such proposals.**

OCD-ARTESIA

Case Serial No.  
NMNM0554221

**SUBMIT IN TRIPLICATE - Other instructions on reverse side**

1. Type of Well

☒ Oil Well ☐ Gas Well ☐ Other

2. Name of Operator

XTO Energy Inc.

3a. Address

200 N. Loraine, Ste. 800 Midland, TX 79701

3b. Phone No. (include area code)

7. If Unit or CA/Agreement, Name and/or No.

8. Well Name and No.  
Nash Unit #36

9. API Well No.

30-015-30176

4. Location of Well (Footage, Sec., T., R., M., or Survey Description)

Unit K Sec 12 Township: 23S Range: 29E  
1460 feet from South line and 1585 from West line

10. Field and Pool, or Exploratory Area  
Nash Draw; Delaware/BS  
(Avalon Sand)

11. County or Parish, State

Eddy NM

12. CHECK APPROPRIATE BOX(ES) TO INDICATE NATURE OF NOTICE, REPORT, OR OTHER DATA

TYPE OF SUBMISSION

☒ Notice of Intent

☐ Subsequent Report

☐ Final Abandonment Notice

TYPE OF ACTION

☒ Acidize

☐ Alter Casing

☐ Casing Repair

☐ Change Plans

☐ Convert to Injection

☐ Deepen

☒ Fracture Treat

☐ New Construction

☐ Plug and Abandon

☐ Plug Back

☐ Production (Start/Resume)

☐ Reclamation

☐ Recomplete

☐ Temporarily Abandon

☐ Water Disposal

☐ Water Shut-Off

☐ Well Integrity

☐ Other Perf Lateral

13. Describe Proposed or Completed Operation (clearly state all pertinent details, including estimated starting date of any proposed work and approximate duration thereof. If the proposal is to deepen directionally or recompleat horizontally, give subsurface locations and measured and true vertical depths of all pertinent markers and zones. Attach the Bond under which the work will be performed or provide the Bond No. on file with BLM/BIA. Required subsequent reports shall be filed within 30 days following completion of the involved operations. If the operation results in a multiple completion or recompleat in a new interval, a Form 3160-4 shall be filed once testing has been completed. Final Abandonment Notices shall be filed only after all requirements, including reclamation, have been completed, and the operator has determined that the final site is ready for final inspection.)

Objective: Acd'z toe section & perf lateral in multiple Delaware intervals & perform 4 stage frac. RWTP after converting well from gas lift to sub pump.

1. MIRU PU. NU BOP. Rel pkr & TOH & LD prod. tbq, gas lift valves & pkr. RD PU.

2. RU BJ Coiltech. RU WoodGroup Logging Srvc. RU crane srvc. RU lubricator. RIH w/3-3/8" Selectfire Perf guns & perf the following intervals @ 1 spf:

7160-70', 7285-95', 7410-15', 7430-35' (30 total holes)

7560-65', 7605-15', 7730-35', 7763-68', 7855-60' (30 total holes)

8535-45', 8595-8600', 8625-30', 8700-10', 8740-45' (30 total holes)

8870-75', 8895-8900', 9005-10', 9035-40', 9070-80' (30 total holes)

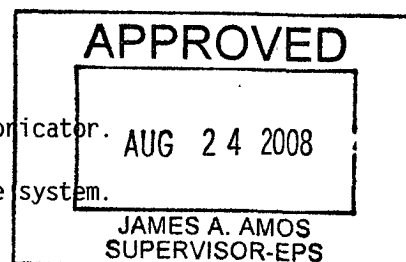
After perforating. RD BJ Coiltech, WoodGroup Logging Srvc, crane & lubricator.

3. RU PU. Move in & rack 2-7/8" WS.

4. RU BJ Tool Srvc. RIH w/ BJ Hydraulic Multi-Stage pkr & frac sleeve system.

See Attachment

ACCEPTED FOR RECORD



14. I hereby certify that the foregoing is true and correct  
Name (Printed/Typed)

Sherry Pack

AUG 28 2008

Title

Regulatory Analyst

Gerry Guye, Deputy Field Inspector  
NMCD-District II ARTESIA

8/7/2008

THIS SPACE FOR FEDERAL OR STATE OFFICE USE

Approved by

Title

Date

Conditions of approval, if any, are attached. Approval of this notice does not warrant or certify that the applicant holds legal or equitable title to those rights in the subject lease which would entitle the applicant to conduct operations thereon.

Office

Title 18 U.S.C. Section 1001; and Title 43 U.S.C. Section 1212, makes it a crime for any person knowingly and willfully to make to any department or agency of the United States any false, fictitious or fraudulent statements or representations as to any matter within its jurisdiction.



**Nash Unit #36**

**API 30-015-30176**

**Form 3160-5 cont'd**

---

- 5) Note : 2 7/8" P-110 WS will be run below AS1X 10K packer set @ +/- 6375' & 3 1/2" P-110 WS will be run above O/O tool .  
Packer @ +/- 7150' (no lower than 7150')  
Frac sleeve @ 7285' (2.00" ball seat)  
Packer @ +/- 7500'  
Frac sleeve @ 7610' (1.75" ball seat)  
Packer @ +/- 8500' (no lower than 8500', higher is OK)  
Frac sleeve @ 8700' (1.50" ball seat)  
Packer @ 8800'  
Frac sleeve @ 9010' (1.25" ball seat)  
Packer @ 9100'  
1" pump out plug  
**NOTE: BALL & SEAT SIZES ASSUME THAT EQUIP ID'S ARE BIG ENOUGH TO PASS BALLS. THIS NEEDS TO BE VERIFIED BEFORE EQUIP IS RUN.**

- 6) Drop 1" ball & set hydraulic packers. Pump out plug. Get injection rate through pump out plug w/ 2% KCL. Put 500 psi on backside.

- 7) RU BJ Services, Acidize previously frac'd toe with 5000 gal 7 1/2" HCL, Drop 1.25" ball in 2000 gal 30# linear gel.

Frac #1 (8870-9080) – 2000 gal 7 1/2% HCL, 5000 gal 30# Linear Gel, 88575 gal Spectra Star 3000 containing 5000# 20/40 Econoprop & 101,000# 20/40 Super LC. Drop 1.50" ball. In flush begin w/ 2000 gal 7 1/2" HCL & finish flush with 30# linear gel (5000 gal 30# linear gel)

Frac # 2 (8535-8745) – 82160 gal Spectra Star 3000 containing 2250# 20/40 Econoprop & 101,000# 20/40 Super LC. Drop 2.00" ball. In flush begin w/ 2000 gal 7 1/2" HCL & finish flush with 30# linear gel (5000 gal 30# linear gel)

Frac #3 (7560-7860) – 82165 gal Spectra Star 3000 containing 2250 # 20/40 Econoprop & 101,000# 20/40 Super LC. Drop 2.00" ball. In flush begin w/ 2000 gal 7 1/2" HCL & finish flush w/ 30# linear gel (5000 gal 30# linear gel)

Frac #4 (7160-7435) – 82000 gal Spectra Star 3000 containing 2250 # 20/40 Econoprop & 101,000# 20/40 Super LC. Flush w/ 30# linear gel to treating sleeve @ 7285'



**Nash Unit #36**

**API 30-015-30176**

**Form 3160-5 cont'd**

All fracs attempt to get **35 BPM @ 8000 psi max treating pressure**. After frac is complete, RD BJ Services & leave well SI overnight.

- 8) Open well & to flow well to test tank with steel lines.
- 9) After well quits flowing, RU swab & begin swabbing to assess productivity of well.
- 10) Release from O/O tool and POH w/WS. LD WS.
- 11) PU production tbg. RIH w/ appropriate sized sub pump. RD PU. RTP

## WELLBORE DIAGRAM

**FIELD:** Nash Draw Brushy Canyon

**WELL NAME:** Nash Draw # 36

**FORMATION:** Brushy Canyon

**LOC:** 1460' FSL & 1585' FWL (Surf)

**BHL:** 1717' FEL & 2043 FNL

**TOWNSHIP:** 23-S

**RANGE:** 29-E

**SEC:** 12

**COUNTY:** Eddy

**STATE:** NM

**GL:** 2984'

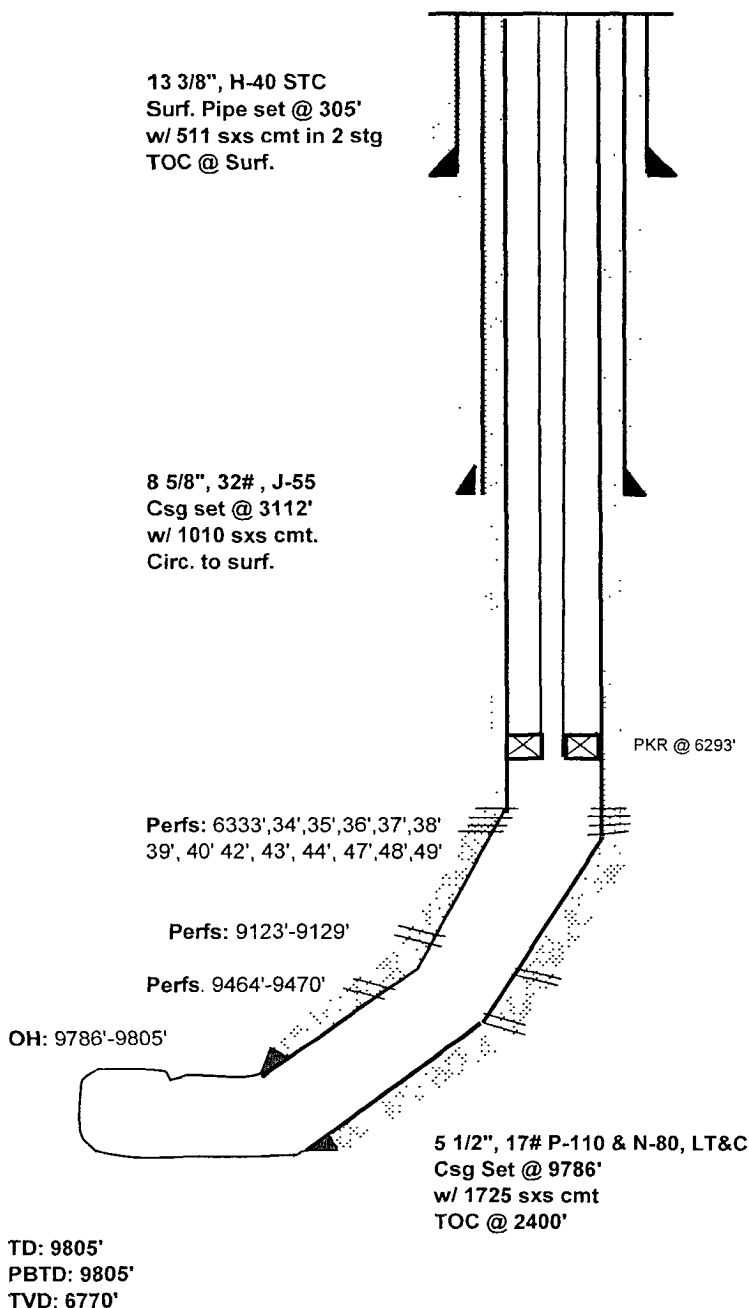
**KB:** 3000'

**DF to GL:**

**CURRENT STATUS:** Producing

**API NO:** 30-015-30176

**Lease Designation:** NM - 0554 221



**Date Completed:** 10/05/01 **Spud Date:** 03/31/01

**Initial Production:** 448 BOPD / 478 BWPD / 1008 MCFGPD

**Initial Formation:** Brushy Canyon **From:** 9123' **To:** 9805'

**Completion Data:** Initial TD @ 9786'. Drill out to 9805' Frac 1/ 9876'-9895' OH. Pmp 2,105 bbls YF-135 and 222,807# 16/30 sd Avg Treating Press 2206#, Max TP 4903#, AIR 19.4 BPM. ISIP 1231#, 5 min 1134#, 10 min. 1060#, 15 min. 993# TIH w/ coil tbg and clean out well Ran scrapper TIH w/ coil tbg and clean w/ nitrogen and foam. Perforated 1/ 9464'-9470' w/ 6 spf ( 37 shots) 9123'-9129' w/ 6 spf ( 37 shots). Ran scrapper through perfs. Straddle perfs 9464'-9470' and Frac w/ 440,000# of YF-120 w/ 48,000# 20/40 sd. Avg Press 7500#, Max Press 8100#, AIR 14 BPM, ISIP 815#. Straddle perfs 9123'-9129', pump 1000 gal 1 NeFe acid w/ 40,000# Y5-125 and 50,000# 20/40 sd Avg Press 7300# @ 14.5 BPM. Max Press 8100# ISIP 911#. Run pump and rods.

### **Workover History:**

04-12-02 Frac w/ 150,000# 16/30 Carbonyl lite and RC sd AIR 70 BPM, Avg Psi 1735#, Max Psi 3410#. ISIP 1093#, 5 min 665#, 10 min. 571#, 15 min 502# Open up to frac tank unable to unload, rec 19 BO 222 BW SET RBP @ 6439' Perforated "H" zone @ 6333', 34', 35', 36', 37', 38', 39', 40', 42', 43', 44', 47', 48', 49' ( 14 holes) and acidized w/ 1500 gals 7 1/2% NeFe, AIR 3 BPM, Max Psi 1565#, Avg Psi 1500#, Some ball action. ISIP 1080# Frac w/ 8000 gals YF-130, 12,000# 16/30 RC Jorad sd. Pmp 5000 gal pad AIR 10 BPM, Avg Psi 1259#, ISIP 902#.

06-07-04 POOH w/ tbg and RBP RIH w/ Pkr and 199 jts of tbg w/ 9 Gas Valves Test Tp 110#, Cp 760#, F 129 BO, 255 BW, 663 MCFG, choke wide open

### **Tubing Detail:**

86 jts 2 7/8" tbg  
Gas valve #9 @ 2706'  
14 jts 2 7/8" tbg  
Gas valve #8 @ 3151'  
14 jts 2 7/8" tbg  
Gas valve #7 @ 3593  
14 jts 2 7/8" tbg  
Gas valve #6 @ 4040'  
14 jts 2 7/8" tbg  
Gas valve #5 @ 4482'  
14 jts 2 7/8" tbg  
Gas valve #4 @ 4927'  
14 jts 2 7/8" tbg  
Gas valve #3 @ 5372'  
14 jts 2 7/8" tbg  
Gas valve #2 @ 5815'  
14 jts 2 7/8" tbg  
Gas valve #1 @ 6262'  
1 jts 2 7/8" tbg  
5 1/2" Pkr Set @ 6293'