

District I  
1625 N. French Dr., Hobbs, NM 88240  
District II  
1361 W Grand Avenue, Artesia, NM 88210  
District III  
1000 Rio Brazos Rd , Aztec, NM 87410  
District IV  
1220 S St Francis Dr , Santa Fe, NM 87505

State of New Mexico  
Energy, Minerals & Natural Resources

Form C-104  
Revised Feb. 26, 2007

Oil Conservation Division  
1220 South St. Francis Dr.  
Santa Fe, NM 87505

Submit to Appropriate District Office  
5 Copies  
AUG 28 2008  
OCD-ARTESIA ☒ AMENDED REPORT

I. REQUEST FOR ALLOWABLE AND AUTHORIZATION TO TRANSPORT

<sup>1</sup> Operator name and Address <b>BEPCO, L.P.</b> <b>P.O. BOX 2760</b> <b>MIDLAND, TX 79702-2760</b>		<sup>2</sup> OGRID Number <b>001801</b>
		<sup>3</sup> Reason for Filing Code/ Effective Date <b>NW 8/08/08</b>
<sup>4</sup> API Number <b>30 -015-35138</b>	<sup>5</sup> Pool Name <b>PIERCE CROSSING (BONE SPRING) EAST</b>	<sup>6</sup> Pool Code <b>96473</b>
<sup>7</sup> Property Code <b>001796</b>	<sup>8</sup> Property Name <b>POKER LAKE UNIT</b>	<sup>9</sup> Well Number <b>274</b>

II. <sup>10</sup> Surface Location

UL or lot no. <b>O</b>	Section <b>12</b>	Township <b>24S</b>	Range <b>29E</b>	Lot.Idn	Feet from the <b>360'</b>	North/South Line <b>SOUTH</b>	Feet from the <b>2310'</b>	East/West line <b>EAST</b>	County <b>EDDY</b>
---------------------------	----------------------	------------------------	---------------------	---------	------------------------------	----------------------------------	-------------------------------	-------------------------------	-----------------------

<sup>11</sup> Bottom Hole Location

UL or lot no. <b>SAME</b>	Section	Township	Range	Lot Idn	Feet from the	North/South line	Feet from the	East/West line	County
<sup>12</sup> Lse Code <b>F</b>	<sup>13</sup> Producing Method <b>PUMPING</b>	<sup>14</sup> Gas Connection Date	<sup>15</sup> C-129 Permit Number	<sup>16</sup> C-129 Effective Date	<sup>17</sup> C-129 Expiration Date				

III. Oil and Gas Transporters

<sup>18</sup> Transporter OGRID	<sup>19</sup> Transporter Name and Address	<sup>20</sup> O/G/W
<b>35246</b>	<b>SHELL TRADING US CO</b> <b>P.O. BOX 4606</b> <b>HOUSTON, TX 77210-4606</b>	<b>O</b>
<b>241472</b>	<b>SOUTHERN UNION GAS SERVICES,LTD</b> <b>301 COMMERCE, SUITE 700</b> <b>FT. WORTH, TX 76102</b>	<b>G</b>

IV. Well Completion Data

<sup>21</sup> Spud Date <b>06/04/2008</b>	<sup>22</sup> Ready Date <b>08/08/2008</b>	<sup>23</sup> TD <b>9288'</b>	<sup>24</sup> PBTD <b>9199'</b>	<sup>25</sup> Perforations <b>7616-9160'</b>	<sup>26</sup> DHC, MC
<sup>27</sup> Hole Size	<sup>28</sup> Casing & Tubing Size	<sup>29</sup> Depth Set	<sup>30</sup> Sacks Cement		
<b>12-1/4"</b>	<b>8-5/8"</b>	<b>802'</b>	<b>650</b>		
<b>7-7/8"</b>	<b>7"</b>	<b>3342'</b>	<b>795</b>		
<b>6-1/8'</b>	<b>4-1/2"</b>	<b>9288'</b>	<b>575</b>		

V. Well Test Data

<sup>31</sup> Date New Oil <b>08/08/2008</b>	<sup>32</sup> Gas Delivery Date <b>08/08/2008</b>	<sup>33</sup> Test Date <b>08/18/2008</b>	<sup>34</sup> Test Length <b>24 HRS</b>	<sup>35</sup> Tbg. Pressure <b>300</b>	<sup>36</sup> Csg. Pressure <b>220</b>
<sup>37</sup> Choke Size <b>22/64"</b>	<sup>38</sup> Oil <b>243</b>	<sup>39</sup> Water <b>293</b>	<sup>40</sup> Gas <b>652</b>		<sup>41</sup> Test Method <b>P</b>

<sup>42</sup> I hereby certify that the rules of the Oil Conservation Division have been complied with and that the information given above is true and complete to the best of my knowledge and belief. Signature: <i>Ann Moore</i>		OIL CONSERVATION DIVISION Approved by: <i>Kimberly M. Wilcox</i>	
Printed name: <b>ANN MOORE</b>		Title: <i>Compliance Officer</i>	
Title: <b>SENIOR PRODUCTION CLERK</b>		Approval Date: <i>9-2-08</i>	
E-mail Address: <b>camoorebasspet.com</b>			
Date: <b>08/26/2008</b>	Phone: <b>(432)683-2277</b>		

DISTRICT I  
1625 N. French Dr., Hobbs, NM 88240

DISTRICT II  
1301 W. Grand Avenue, Artesia, NM 88210

DISTRICT III  
1000 Rio Brasos Rd., Aztec, NM 87410

DISTRICT IV  
1220 S. St. Francis Dr., Santa Fe, NM 87505

State of New Mexico  
Energy, Minerals and Natural Resources Department

Form C-102  
Revised October 12, 2005

Submit to Appropriate District Office  
State Lease - 4 Copies  
Fee Lease - 3 Copies

OIL CONSERVATION DIVISION  
1220 South St. Francis Dr.  
Santa Fe, New Mexico 87505

☐ AMENDED REPORT

WELL LOCATION AND ACREAGE DEDICATION PLAT

API Number 30-015-35138	Pool Code 96473	Pool Name PIERCE CROSSING (BONE SPRING) EAST
Property Code 001796	Property Name POKER LAKE UNIT	Well Number 274
OGRID No. 001801	Operator Name BEPCO, L.P.	Elevation 3110'

Surface Location

UL or lot No.	Section	Township	Range	Lot Idn	Feet from the	North/South line	Feet from the	East/West line	County
0	12	24 S	29 E		360	SOUTH	2310	EAST	EDDY

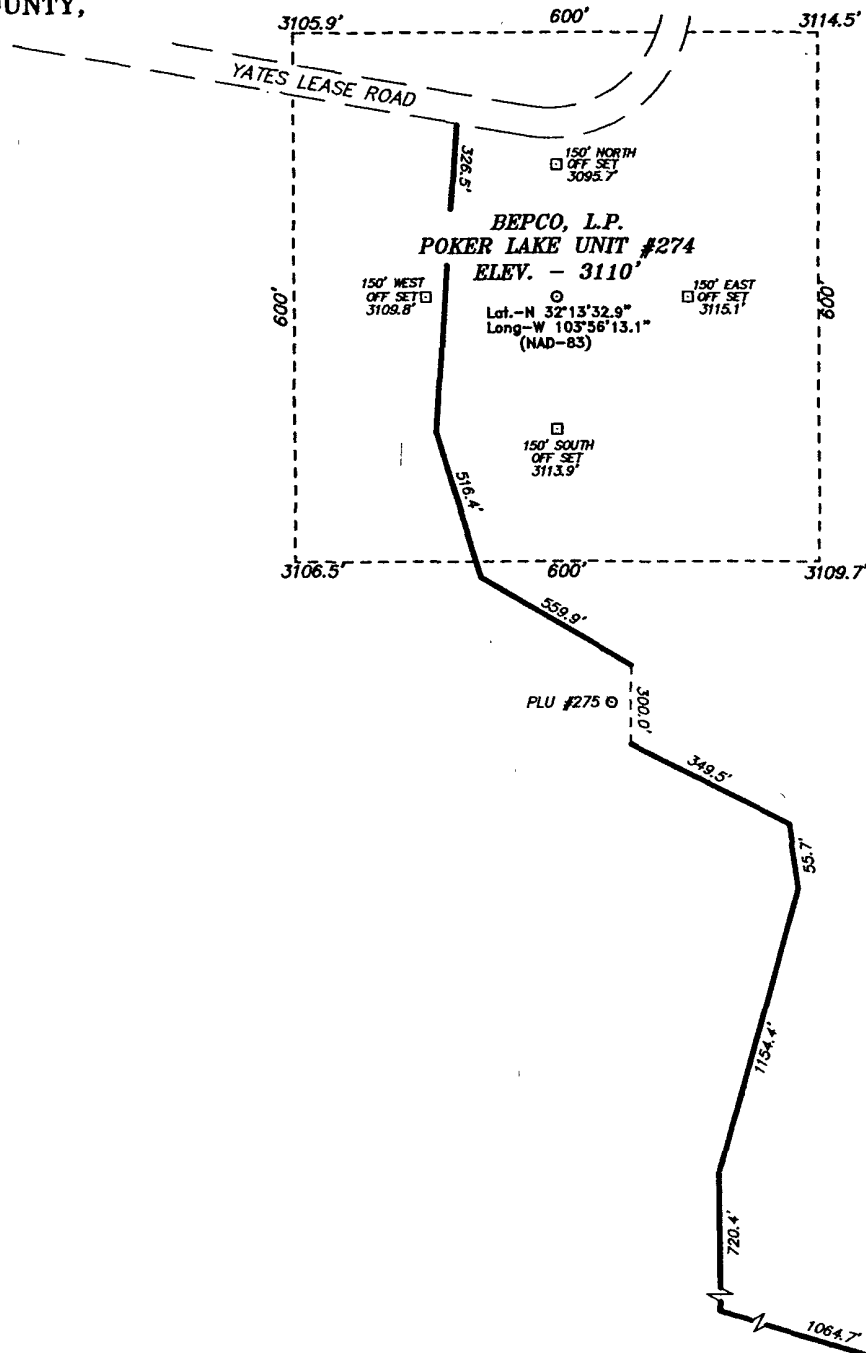
Bottom Hole Location If Different From Surface

UL or lot No.	Section	Township	Range	Lot Idn	Feet from the	North/South line	Feet from the	East/West line	County
Dedicated Acres 40	Joint or Infill N	Consolidation Code	Order No.						

NO ALLOWABLE WILL BE ASSIGNED TO THIS COMPLETION UNTIL ALL INTERESTS HAVE BEEN CONSOLIDATED  
OR A NON-STANDARD UNIT HAS BEEN APPROVED BY THE DIVISION

159.56 ACRES	159.56 ACRES	<p><b>OPERATOR CERTIFICATION</b></p> <p>I hereby certify that the information contained herein is true and complete to the best of my knowledge and belief, and that this organization either owns a working interest or unleased mineral interest in the land including the proposed bottom hole location pursuant to a contract with an owner of such a mineral or working interest, or to a voluntary pooling agreement or a compulsory pooling order heretofore entered by the division.</p> <p><u>William R. Dannels</u> Signature Date 8/7/06</p> <p><u>W.R. Dannels</u> Printed Name</p>	
159.76 ACRES	159.76 ACRES		<p><b>SURVEYOR CERTIFICATION</b></p> <p>I hereby certify that the well location shown on this plat was plotted from field notes of actual surveys made by me or under my supervision, and that the same is true and correct to the best of my belief.</p> <p>Date Surveyed 02.28.06</p> <p>Signature &amp; Seal of Professional Surveyor</p> <p><u>Quirly L. Jones</u> Certificate No. 7977</p> <p><b>BASIN SURVEYS</b></p>
<p>LAT - N32°13'32.9"</p> <p>LONG - W103°58'13.1"</p> <p>(NAD-83)</p> <p>3105.9' 3114.5' 2310' 3106.5' 3109.7'</p>			

SECTION 12, TOWNSHIP 24 SOUTH, RANGE 29 EAST, N.M.P.M.,  
EDDY COUNTY, NEW MEXICO.



DIRECTIONS TO LOCATION:

FROM THE JUNCTION OF CO. RD. 793 (RAWHIDE) AND STATE #128, GO SOUTH ON CO. RD. 793 FOR APPROX. 7.8 MILES TO LEASE ROAD; THENCE WEST ON LEASE ROAD FOR 1.0 MILE TO LEASE ROAD; THENCE SOUTH FOR 0.8 MILE; THENCE SOUTHWEST 0.2 MILE TO THE PROPOSED WELL LOCATION.

**BASIN SURVEYS** P.O. BOX 1786 - HOBBS, NEW MEXICO

W.O. Number: 6425 Drawn By: J. SMALL

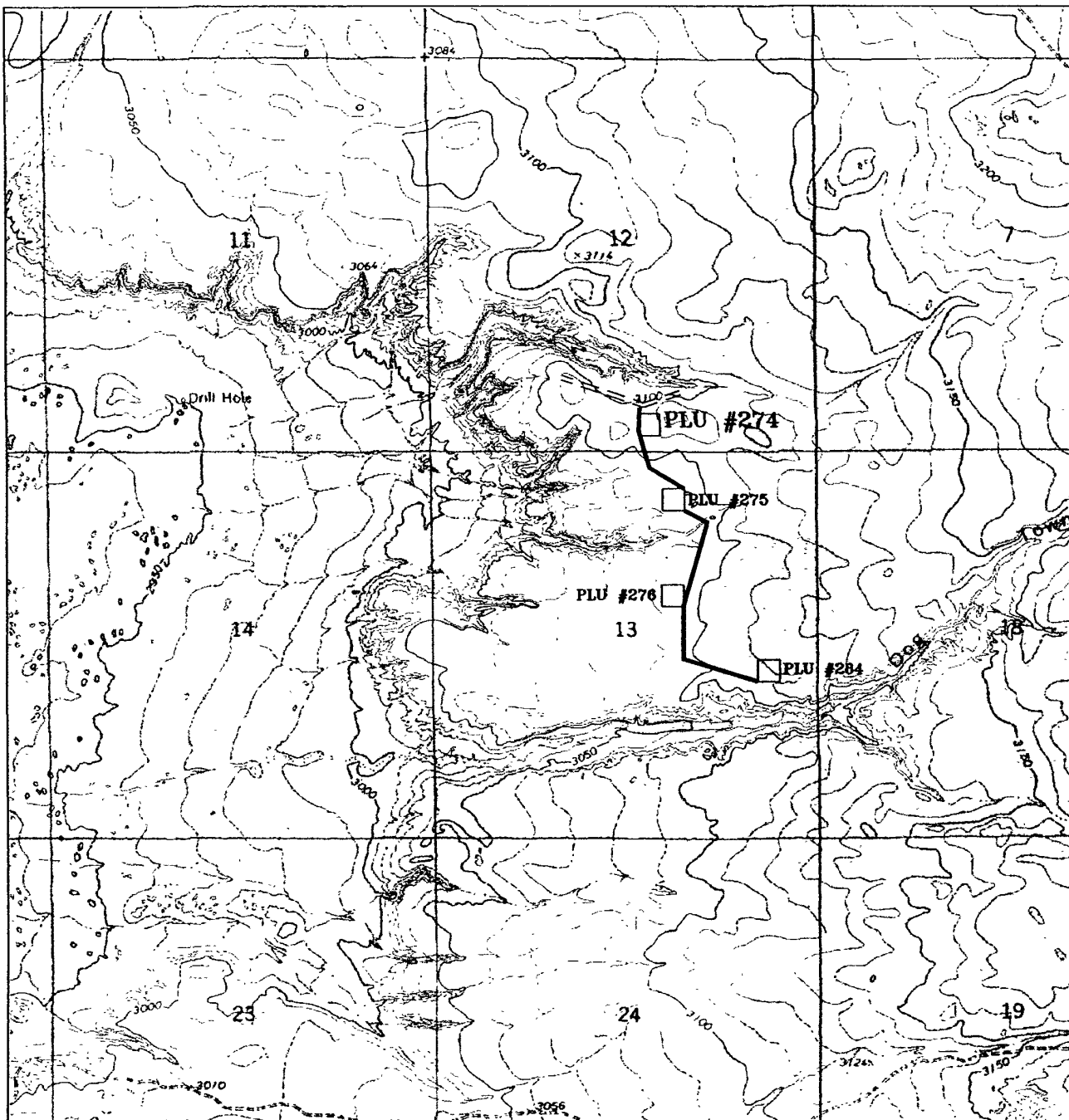
Date: 05-02-2006 Disk: 6425W

**BEPCO, L.P.**

REF: POKER LAKE UNIT #274 / WELL PAD AND TOPO

THE POKER LAKE UNIT #274 LOCATED 360' FROM  
THE SOUTH LINE AND 2310' FROM THE EAST LINE OF  
SECTION 12, TOWNSHIP 24 SOUTH, RANGE 29 EAST,  
N.M.P.M., EDDY COUNTY, NEW MEXICO.

Survey Date: 04-28-2006 Sheet 1 of 1 Sheets



### POKER LAKE UNIT #274

Located at 360' FSL and 2310' FEL  
 Section 12, Township 24 South, Range 29 East,  
 N.M.P.M., Eddy County, New Mexico.



P.O. Box 1786  
 1120 N. West County Rd.  
 Hobbs, New Mexico 88241  
 (505) 393-7316 - Office  
 (505) 392-3074 - Fax  
 basinsurveys.com

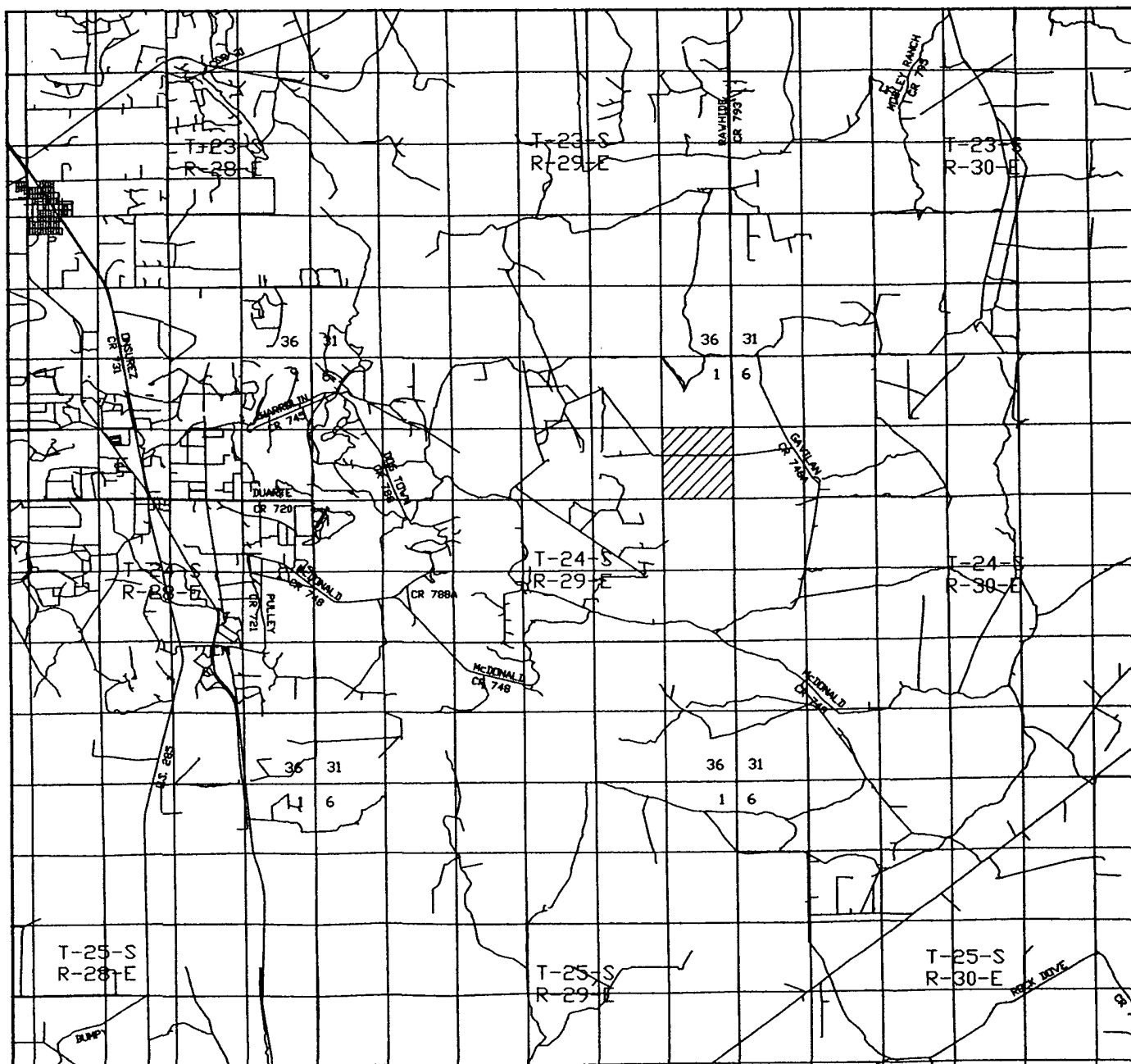
W.O. Number: JMS 6425T

Survey Date: 04-28-2006

Scale: 1" = 2000'

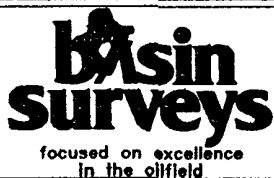
Date: 05-02-2006

BEPCO, L.P.



# **POKER LAKE UNIT #274**

Located at 360' FSL and 2310' FEL  
 Section 12, Township 24 South, Range 29 East,  
 N.M.P.M., Eddy County, New Mexico.



P.O. Box 1786  
 1120 N. West County Rd.  
 Hobbs, New Mexico 88241  
 (505) 393-7316 - Office  
 (505) 392-3074 - Fax  
[basinsurveys.com](http://basinsurveys.com)

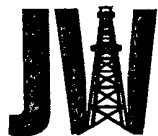
W.O. Number: JMS 6425T

Survey Date: 04-28-2006

Scale: 1" = 2000'

Date: 05-02-2006

**BEPCO, L.P.**



# DRILLING INC. Oil Well Drilling Contractor

Post Office Box 160 Artesia, New Mexico 88211-0160 Office (505) 748-8704 Fax (505) 748-8719

August 18, 2008

BEPCO, L.P.  
P.O. Box 2760  
Midland, Texas 79702

Re: Poker Lake Unit # 274  
Sec. 12, T-24-S, R-29-E  
Eddy County, New Mexico

The following is a Deviation Survey on the referenced well in Eddy County, New Mexico:

250' - 1°	2987' - 2°	6708' - 1.75°	8920' - 1.75°
498' - 1°	3252' - 4.25°	6863' - 2°	9226' - 2.25°
792' - 1.5°	3302' - 3.5°	7117' - 2°	
1063' - 1°	3921' - 1°	7402' - 2°	
1374' - 1.25°	4272' - 0.75°	7658' - 1.25°	
1622' - 1°	4728' - 1.75°	7911' - 1.25°	
1832' - 1.5°	4894' - 2.75°	8011' - 2.5°	
2028' - 0.5°	5020' - 2.25°	8075' - 1.5°	
2308' - 0.5°	5272' - 1.75°	8235' - 2°	
2494' - 0.5°	5522' - 2°	8355' - 2°	
2588' - 1°	5961' - 1°	8391' - 1.5°	
2653' - 2°	6098' - 1.5°	8456' - 2°	
2777' - 1.5°	6396' - 1.75°	8637' - 0.5°	
2869' - 2°	6495' - 1.75°	8740' - 1.5°	

Sincerely,

Gary W. Chappell  
Contracts Manager

STATE OF NEW MEXICO )  
COUNTY OF EDDY )

The foregoing was acknowledged before me this 18th day of August, 2008 by Gary W. Chappell.

MY COMMISSION EXPIRES

4/15/10

OFFICIAL SEAL



Patti Horner, Notary Public, State of New Mexico

EXPIRES: 4/15/10