

DISTRICT I  
1625 N. French Dr., Hobbs, NM 88240  
DISTRICT II  
1301 W. Grand Avenue, Artesia, NM 88210  
DISTRICT III  
1000 Rio Brazos Rd., Aztec, NM 87410  
DISTRICT IV  
1220 S. St. Francis Dr., Santa Fe, NM 87505

State of New Mexico  
Energy, Minerals and Natural Resources Department



Form C-102  
Revised October 12, 2005

Submit to Appropriate District Office  
State Lease - 4 Copies  
Fee Lease - 3 Copies

OIL CONSERVATION DIVISION  
1220 South St. Francis Dr.  
Santa Fe, New Mexico 87505

SEP - 2 2008

OCD-ARTESIA

☐ AMENDED REPORT

WELL LOCATION AND ACREAGE DEDICATION PLAT

API Number 30-015-36577	Pool Code 70310	Pool Name ANGELL RANCH; ATOKA - MORROW
Property Code 37350	Property Name GUARDIAN "25" STATE COM	Well Number 1
OGRID No. 6137	Operator Name DEVON ENERGY PRODUCTION COMPANY LP	Elevation 3484'

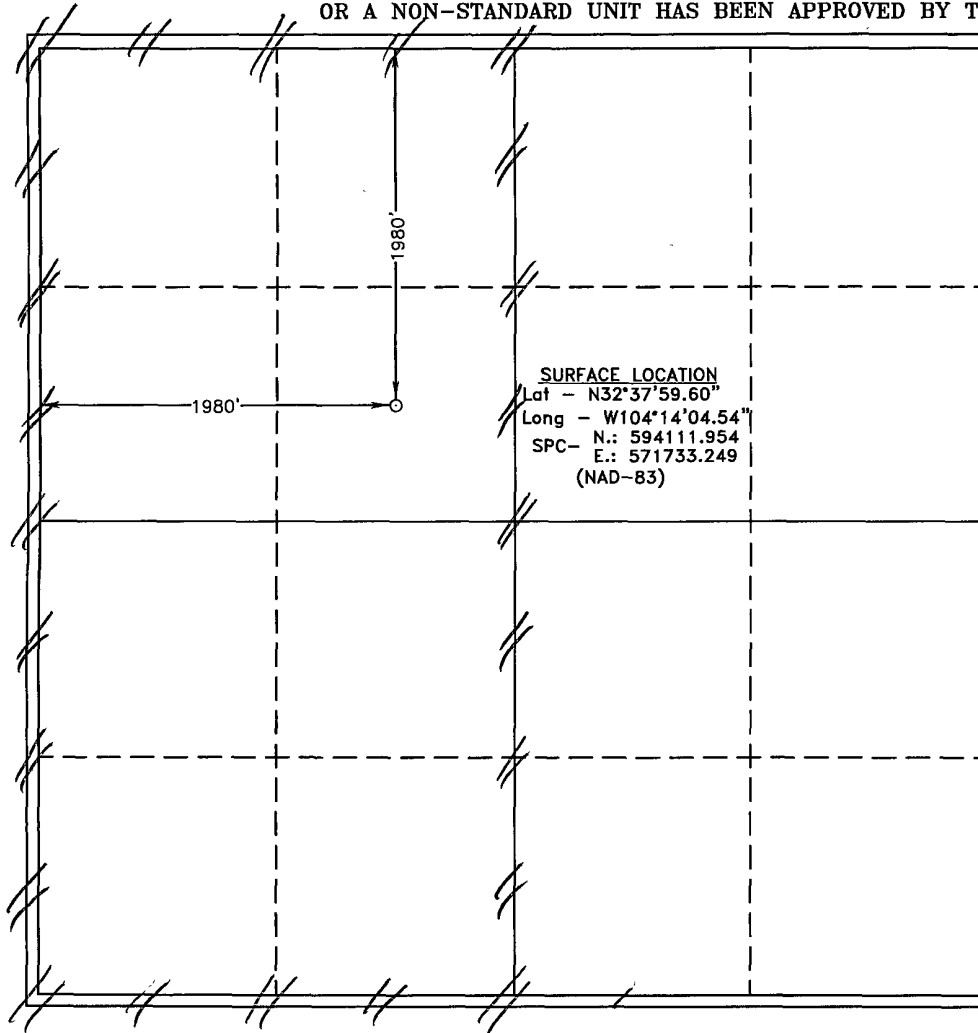
Surface Location

UL or lot No. F	Section 25	Township 19 S	Range 27 E	Lot Idn	Feet from the 1980	North/South line NORTH	Feet from the 1980	East/West line WEST	County EDDY
--------------------	---------------	------------------	---------------	---------	-----------------------	---------------------------	-----------------------	------------------------	----------------

Bottom Hole Location If Different From Surface

UL or lot No.	Section	Township	Range	Lot Idn	Feet from the	North/South line	Feet from the	East/West line	County
Dedicated Acres 320	Joint or Infill	Consolidation Code	Order No.						

NO ALLOWABLE WILL BE ASSIGNED TO THIS COMPLETION UNTIL ALL INTERESTS HAVE BEEN CONSOLIDATED  
OR A NON-STANDARD UNIT HAS BEEN APPROVED BY THE DIVISION



OPERATOR CERTIFICATION

I hereby certify that the information contained herein is true and complete to the best of my knowledge and belief, and that this organization either owns a working interest or unleased mineral interest in the land including the proposed bottom hole location pursuant to a contract with an owner of such a mineral or working interest, or to a voluntary pooling agreement or a compulsory pooling order heretofore entered by the division.

Signature

08/29/08

Date

STEPHANIE A. YSASAGA  
Printed Name

SURVEYOR CERTIFICATION

I hereby certify that the well location shown on this plat was plotted from field notes of actual surveys made by me or under my supervision and that the same is true and correct to the best of my belief.

AUGUST 11 2008

Date Surveyed

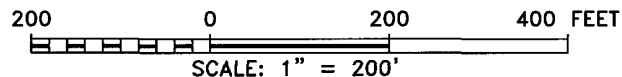
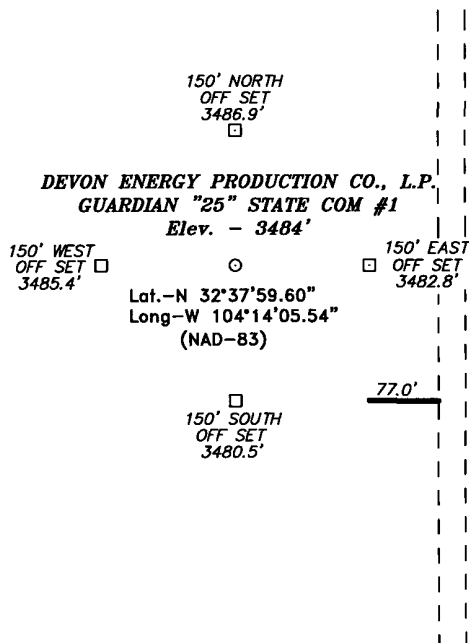
Signature & Seal  
Professional Surveyor

W.O. JONES

Certificate No. Gary L. Jones 7977

BASIN SURVEYS

SECTION 25, TOWNSHIP 19 SOUTH, RANGE 27 EAST, N.M.P.M.,  
EDDY COUNTY, NEW MEXICO.



Directions to Location:

FROM THE JUNCTION OF ANGLE RANCH ROAD (237)  
AND ILLINOIS CAMP (206), GO NORTH 2.8 MILES TO  
LEASE ROAD, THENCE WEST 0.4 MILES THENCE  
NORTH 0.3 MILES TO PROPOSED LEASE ROAD.

**DEVON ENERGY PROD. CO., L.P.**

REF: GUARDIAN "25" STATE COM #1 / WELL PAD TOPO

THE GUARDIAN "25" STATE COM #1 LOCATED 1980' FROM  
THE NORTH LINE AND 1980' FROM THE WEST LINE OF  
SECTION 25, TOWNSHIP 19 SOUTH, RANGE 27 EAST,  
N.M.P.M., EDDY COUNTY, NEW MEXICO.

**BASIN SURVEYS** P.O. BOX 1786-HOBBS, NEW MEXICO

W.O. Number: 20266

Drawn By: J. M. SMALL

Date: 08-13-2008

Disk: 20266 JMS

Survey Date: 08-11-2008

Sheet 1 of 1 Sheets







# Laboratory Services, Inc.

4016 Fleeta Drive  
Hobbs, New Mexico 88240

Telephone: (505) 397-3713

FOR: Devon Energy Production Co., LP  
P. O. Box 750  
Artesia, New Mexico 88211-0250

SAMPLE:  
IDENTIFICATION: Rifleman 5 St. Com. #1  
COMPANY: Devon Energy  
LEASE:  
PLANT:

SAMPLE DATA: DATE SAMPLED: 9/25/01  
ANALYSIS DATE: 9/28/01  
PRESSURE - PSIG 500  
SAMPLE TEMP. °F 84  
ATMOS. TEMP. °F  
REMARKS: Sample taken @ the meter run.

GAS (XX) LIQUID ( )  
SAMPLED BY: G. Myers-Pro Well  
ANALYSIS BY: Vickie Biggs

## COMPONENT ANALYSIS

COMPONENT	MOL PERCENT	GPM
Hydrogen Sulfide (H2S)		
Nitrogen (N2)	0.401	
Carbon Dioxide (CO2)	0.907	
Methane (C1)	93.841	
Ethane (C2)	4.252	1.129
Propane (C3)	0.749	0.206
I-Butane (IC4)	0.131	0.043
N-Butane (NC4)	0.095	0.030
I-Pentane (IC5)	0.040	0.015
N-Pentane (NC5)	0.030	0.011
Hexane Plus (C6+)	0.074	0.082
	100.000	1.466

BTU/CU.FT. - DRY 1050  
AT 14.650 DRY 1047  
AT 14.650 WET 1029  
AT 14.73 DRY 1053  
AT 14.73 WET 1034

MOLECULAR WT. 17.3367

SPECIFIC GRAVITY -  
CALCULATED 0.589  
MEASURED

## **HYDROGEN SULFIDE DRILLING OPERATIONS PLAN**

1. All Company and Contract personnel admitted on location must be trained by a qualified H2S safety instructor to the following:
  - a. Characteristics of H2S
  - b. Physical effects and hazards
  - c. Proper use of safety equipment and life support systems.
  - d. Principle and operation of H2S detectors, warning system and briefing areas
  - e. Evacuation procedures, routes and first aid.
  - f. Proper use of 30-minute pressure demand air pack.
2. H2S Detection and Alarm System
  - a. H2S detectors and audio alarm system to be located at bell nipple, end of blooie line (mud pit) and on derrick floor or doghouse.
3. Windsock and/or wind streamers
  - a. Windsock at mud pit area should be high enough to be visible
  - b. Windsock at briefing area should be high enough to be visible
  - c. There should be a windsock at entrance to location
4. Condition Flags and Signs
  - a. Warning Sign on access road to location
  - b. Flags to be displayed on sign at entrance to location. Green flag, normal safe condition. Yellow flag indicates potential pressure and danger. Red flag, danger, H2S present in dangerous concentration. Only emergency personnel admitted to location.
5. Well Control Equipment
  - a. See Exhibit "E" & "E-1"
6. Communication
  - a. While working under masks chalkboards will be used for communication.
  - b. Hand signals will be used where chalk board is inappropriate
  - c. Two way radio will be used to communicate off location in case of emergency help is required. In most cases cellular telephones will be available at most drilling foreman's trailer or living quarters.
7. Drill stem Testing
  - a. Exhausts will be watered
  - b. Flare line will be equipped with an electric igniter or a propane pilot light in case gas reaches the surface.
  - c. If the location is near to a dwelling a closed DST will be performed.
8. Drilling contractor supervisor will be required to be familiar with the effects H2S has on tubular goods and other mechanical equipment.

If H2S is encountered, mud system will be altered if necessary to maintain control or formation. A mud gas separator will be brought into service along with H2S scavengers if necessary.

## Emergency Procedures

In the case of a release of gas containing H<sub>2</sub>S, the first responder(s) must isolate the area and prevent entry by other persons into the 100 ppm ROE. Additionally the first responder(s) must evacuate any public places encompassed by the 100 ppm ROE. First responder(s) must take care not to injure themselves during this operation. Company and/or local officials must be contacted to aid in this operation. Evacuation of the public should be beyond the 100 ppm ROE.

All responders must have training in the detection of H<sub>2</sub>S, measures for protection against the gas, equipment used for protection and emergency response. Additionally, responders must be equipped with H<sub>2</sub>S monitors and air packs in order to control the release. Use the “buddy system” to ensure no injuries during the response.

## Ignition of Gas Source

Should control of the well be considered lost and ignition considered, take care to protect against exposure to Sulfur Dioxide (SO<sub>2</sub>). Intentional ignition must be coordinated with the NMOCD and local officials. Additionally the NM State Police may become involved. NM State Police shall be the Incident Command on scene of any major release. Take care to protect downwind whenever there is an ignition of the gas

## Characteristics of H<sub>2</sub>S and SO<sub>2</sub>

Common Name	Chemical Formula	Specific Gravity	Threshold Limit	Hazardous Limit	Lethal Concentration
Hydrogen Sulfide	H <sub>2</sub> S	1.189 Air = 1	10 ppm	100 ppm/hr	600 ppm
Sulfur Dioxide	SO <sub>2</sub>	2.21 Air = 1	2 ppm	N/A	1000 ppm

## Contacting Authorities

Devon Energy Corp. personnel must liaison with local and state agencies to ensure a proper response to a major release. Additionally, the OCD must be notified of the release as soon as possible but no later than 4 hours. Agencies will ask for information such as type and volume of release, wind direction, location of release, etc. Be prepared with all information available. The following call list of essential and potential responders has been prepared for use during a release. Devon Energy Corp. Company response must be in coordination with the State of New Mexico’s ‘Hazardous Materials Emergency Response Plan’ (HMER)

## Devon Energy Corp. Company Call List

<u>Artesia (575)</u>	<u>Cellular</u>	<u>Office</u>	<u>Home</u>
Foreman – BJ Cathey.....	390-5893 .....	748-0176 .....	887-6026
Asst. Foreman – Bobby Jones...	748-7447 .....	748-0176 .....	746-3194
Don Mayberry.....	748-7180 .....	748-5235 .....	746-4945
Montral Walker .....	(575) 390-5182 .	(575) 748-0193 .	
Linda Berryman .....	(575) 513-0534 .	(575) 748-0177 .	

### Agency Call List

<u>Lea</u>	<u>Hobbs</u>	
<u>County</u>	State Police.....	392-5588
<u>(505)</u>	City Police.....	397-9265
	Sheriff's Office.....	393-2515

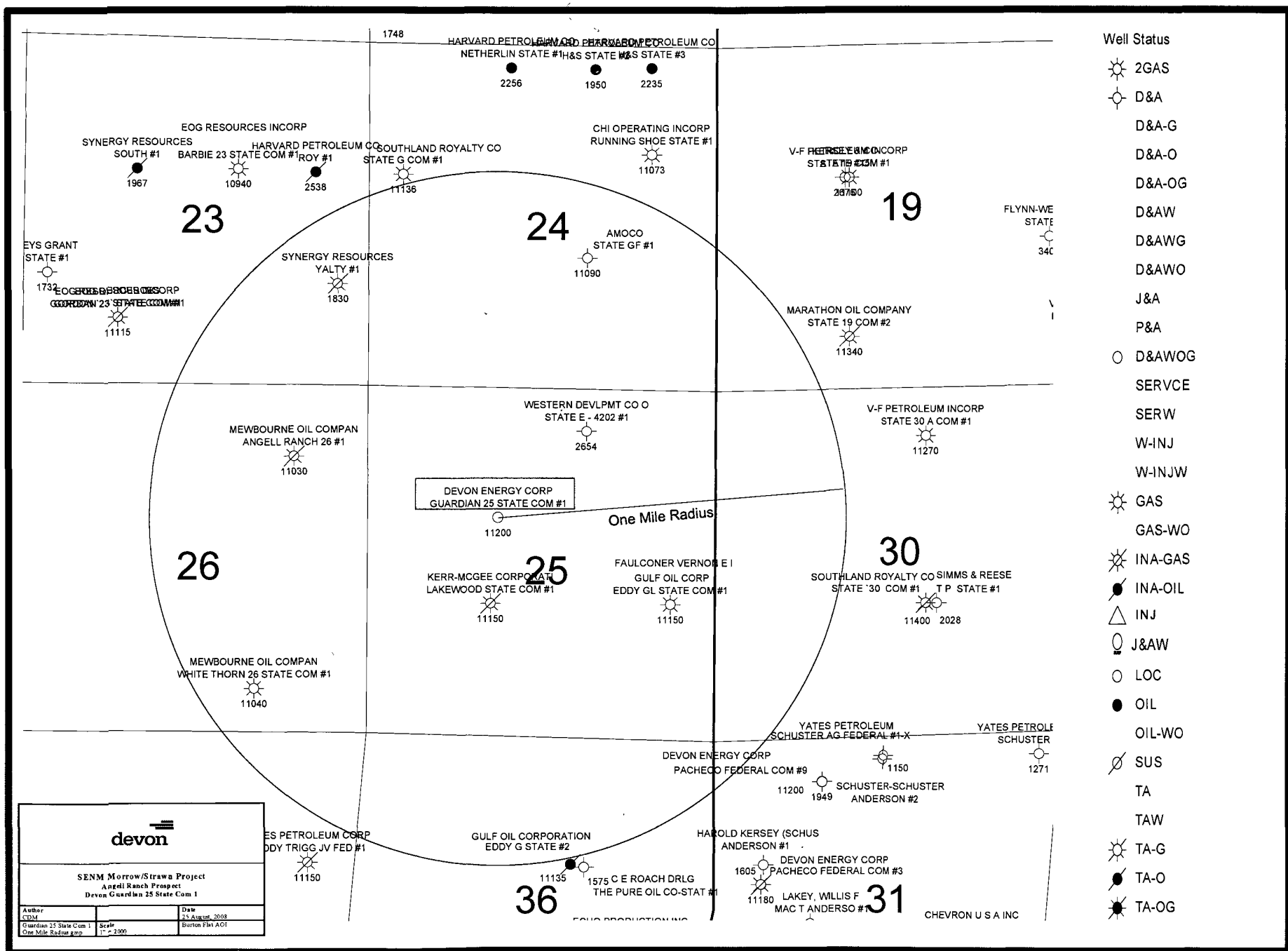
Ambulance.....	911
Fire Department .....	397-9308
LEPC (Local Emergency Planning Committee) .....	393-2870
NMOCD.....	393-6161
US Bureau of Land Management.....	393-3612

<u>Eddy</u>	<u>Carlsbad</u>	
<u>County</u>	State Police .....	885-3137
<u>(505)</u>	City Police .....	885-2111
	Sheriff's Office .....	887-7551
	Ambulance .....	911
	Fire Department .....	885-2111
	LEPC (Local Emergency Planning Committee).....	887-3798
	US Bureau of Land Management .....	887-6544
	New Mexico Emergency Response Commission (Santa Fe)....	(575) 476-9600
	24 HR .....	(575) 827-9126
	National Emergency Response Center (Washington, DC) .....	(800) 424-8802

### Emergency Services

	Boots & Coots IWC .....	1-800-256-9688 or (281) 931-8884
	Cudd Pressure Control.....	(915) 699-0139 or (915) 563-3356
	Halliburton .....	(575) 746-2757
	B. J. Services.....	(575) 746-3569
<i>Give</i>	Flight For Life - Lubbock, TX .....	(806) 743-9911
<i>GPS</i>	Aerocare - Lubbock, TX .....	(806) 747-8923
<i>position:</i>	Med Flight Air Amb - Albuquerque, NM .....	(575) 842-4433
	Lifeguard Air Med Svc. Albuquerque, NM .....	(575) 272-3115





SENeca Morrow/Strawn Project  
Devon Guardian 25 State Com 1

Author CDM	Date 25 August, 2008
Guardian 25 State Com 1 One Mile Radius map	Scale 1" = 2000'

State of New Mexico  
Energy, Minerals and Natural Resources

Oil Conservation Division

1220 S. St Francis Dr.

Santa Fe, NM 87505

Online

APPLICATION FOR PERMIT TO DRILL, RE-ENTER, DEEPEN, PLUGBACK, OR ADD A ZONE

1 Operator Name and Address CHESAPEAKE OPERATING, INC. P. O. BOX 18496 OKLAHOMA CITY , OK 731540496		2 OGRID Number 147179
		3. API Number
4. Property Code	5. Property Name WILLOW LAKE 10 STATE COM.	6. Well No. 001H

7. Surface Location

UL - Lot	Section	Township	Range	Lot Idn	Feet From	N/S Line	Feet From	E/W Line	County
M	10	25S	28E	M	350	S	150	W	EDDY

8. Pool Information

WILLOW LAKE; DELAWARE, SW	96855
---------------------------	-------

Additional Well Information

9. Work Type New Well	10. Well Type OIL	11. Cable/Rotary	12. Lease Type State	13. Ground Level Elevation 2948
14 Multiple N	15. Proposed Depth 8105	16 Formation Delaware	17. Contractor	18. Spud Date
Depth to Ground water		Distance from nearest fresh water well		Distance to nearest surface water
Pit: Liner: Synthetic <input type="checkbox"/> mls thick Clay <input type="checkbox"/> Pit Volume: bbls Drilling Method: Closed Loop System <input type="checkbox"/> Fresh Water <input checked="" type="checkbox"/> Brine <input type="checkbox"/> Diesel/Oil-based <input type="checkbox"/> Gas/Air <input type="checkbox"/>				

19. Proposed Casing and Cement Program

Type	Hole Size	Casing Type	Casing Weight/ft	Setting Depth	Sacks of Cement	Estimated TOC
Surf	17.5	13.375	48	400	450	0
Intl	12.25	9.625	40	2515	850	0
Prod	8.75	5.5	28	8105	800	2250

Casing/Cement Program: Additional Comments

13 3/8" 48# H-40 ST&C Surf csng set @ 400' w/450 sxs Class C + additives. 14.8 ppg @ 1.34 yield. TOC-Surface. 9 5/8" 40# J-55 LT&C Int csng set @ 2515' w/ 850 sxs cmt. Lead-1.34 yield. TOC-Surface. 5 1/2" 17 # N-80 LTC Prod csng w/800 sxs. 1.6 yield TOC-@2250'.

Proposed Blowout Prevention Program

Type	Working Pressure	Test Pressure	Manufacturer
Hydril	5000	5000	

I hereby certify that the information given above is true and complete to the best of my knowledge and belief I further certify that the drilling pit will be constructed according to NMOCD guidelines <input type="checkbox"/> a general permit <input type="checkbox"/> or an (attached) alternative OCD-approved plan <input type="checkbox"/> Printed Name: Electronically filed by Brenda Coffman Title: Sr. Regulatory Comp. Spec. Email Address: bcoffman@chkenegy.com Date: 9/4/2008	OIL CONSERVATION DIVISION	
	Approved By:	
	Title:	
	Approved Date:	Expiration Date:
	Phone: 817-556-5825	

District I

1625 N. French Dr., Hobbs, NM 88240

District II

1301 W Grand Ave., Artesia, NM 88210

District III

1000 Rio Brazos Rd , Aztec, NM 87410

District IV

1220 S. St Francis Dr., Santa Fe, NM 87505

**State of New Mexico**

Form C-102

Permit 80222

**Energy, Minerals and Natural Resources****Oil Conservation Division****1220 S. St Francis Dr.****Santa Fe, NM 87505****WELL LOCATION AND ACREAGE DEDICATION PLAT**

1. API Number	2. Pool Code 96855	3. Pool Name WILLOW LAKE; DELAWARE, SW
4. Property Code	5. Property Name WILLOW LAKE 10 STATE COM.	6. Well No. 001H
7. OGRID No. 147179	8. Operator Name CHESAPEAKE OPERATING, INC.	9. Elevation 2948

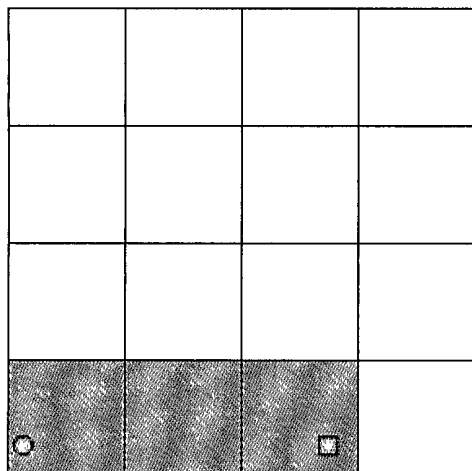
**10. Surface Location**

UL - Lot M	Section 10	Township 25S	Range 28E	Lot Idn	Feet From 350	N/S Line S	Feet From 150	E/W Line W	County EDDY
---------------	---------------	-----------------	--------------	---------	------------------	---------------	------------------	---------------	----------------

**11. Bottom Hole Location If Different From Surface**

UL - Lot O	Section 10	Township 25S	Range 28E	Lot Idn	Feet From 350	N/S Line S	Feet From 1670	E/W Line E	County EDDY
12. Dedicated Acres 120.00		13. Joint or Infill		14. Consolidation Code Communitization		15. Order No.			

**NO ALLOWABLE WILL BE ASSIGNED TO THIS COMPLETION UNTIL ALL INTERESTS HAVE BEEN CONSOLIDATED OR A NON-STANDARD UNIT HAS BEEN APPROVED BY THE DIVISION**

**OPERATOR CERTIFICATION**

*I hereby certify that the information contained herein is true and complete to the best of my knowledge and belief, and that this organization either owns a working interest or unleased mineral interest in the land including the proposed bottom hole location(s) or has a right to drill this well at this location pursuant to a contract with an owner of such a mineral or working interest, or to a voluntary pooling agreement or a compulsory pooling order heretofore entered by the division.*

E-Signed By: Brenda Coffman

Title: Sr. Regulatory Comp. Spec.

Date: 9/4/2008

**SURVEYOR CERTIFICATION**

*I hereby certify that the well location shown on this plat was plotted from field notes of actual surveys made by me or under my supervision, and that the same is true and correct to the best of my belief.*

Surveyed By: Gary Eidson

Date of Survey: 7/3/2008

Certificate Number: 12641

## Permit Comments

Operator: CHESAPEAKE OPERATING, INC. , 147179

Well: WILLOW LAKE 10 STATE COM. #001H

API:

Created By	Comment	Comment Date
busterarrant	C-102, Directional Drill Planning Report, NMOCD form C-144CLEZ, and NSL-5889 will be sent seperately by UPS.	8/13/2008