

District I  
1625 N. French Dr., Hobbs, NM 88240  
District II  
1301 W. Grand Avenue, Artesia, NM 88210  
District III  
1000 Rio Brazos Road, Aztec, NM 87410  
District IV  
1220 S. St. Francis Dr., Santa Fe, NM 87505

State of New Mexico  
Energy Minerals and Natural Resources

OCT 14 2008  
Form C-101  
June 16, 2008  
OCD-ARTESIA  
Submit to appropriate District Office

Oil Conservation Division  
1220 South St. Francis Dr.  
Santa Fe, NM 87505

AMENDED REPORT

**APPLICATION FOR PERMIT TO DRILL, RE-ENTER, DEEPEN, PLUGBACK, OR ADD A ZONE**

<sup>1</sup> Operator Name and Address RKI EXPLORATION & PRODUCTION 3817 N.W. EXPRESSWAY, SUITE 950 OKLAHOMA CITY, OKLAHOMA 73112		<sup>2</sup> OGRID Number 246289
<sup>3</sup> Property Code 36900	<sup>4</sup> Property Name RDX 16	<sup>5</sup> API Number 30-015-36784
<sup>9</sup> Proposed Pool 1 Brushy Draw – Delaware East		<sup>6</sup> Well No. 7
<sup>9</sup> Proposed Pool 1		<sup>10</sup> Proposed Pool 2

<sup>7</sup> Surface Location

UL or lot no	Section	Township	Range	Lot Idn	Feet from the	North/South line	Feet from the	East/West line	County
H	16	26S	30E		1650	North	990	East	EDDY

<sup>8</sup> Proposed Bottom Hole Location If Different From Surface

UL or lot no	Section	Township	Range	Lot Idn	Feet from the	North/South line	Feet from the	East/West line	County

Additional Well Information

<sup>11</sup> Work Type Code N	<sup>12</sup> Well Type Code O	<sup>13</sup> Cable/Rotary Rotary	<sup>14</sup> Lease Type Code S	<sup>15</sup> Ground Level Elevation 3071
<sup>16</sup> Multiple N	<sup>17</sup> Proposed Depth 7524	<sup>18</sup> Formation Delaware	<sup>19</sup> Contractor	<sup>20</sup> Spud Date A.S.A.P.

<sup>21</sup> Proposed Casing and Cement Program

Hole Size	Casing Size	Casing weight/foot	Setting Depth	Sacks of Cement	Estimated TOC
17 1/2"	13 3/8"	54.5#	450	399	Surface
11"	8 5/8"	32#	3349	732	Surface
7 5/8"	5 1/2"	17#	7524	732	<del>3149'</del> 2800' 2800'

<sup>22</sup> Describe the proposed program. If this application is to DEEPEN or PLUG BACK, give the data on the present productive zone and proposed new productive zone. Describe the blowout prevention program, if any Use additional sheets if necessary.

<sup>23</sup> I hereby certify that the information given above is true and complete to the best of my knowledge and belief.

Signature: *Bill Aubrey*  
Printed name: Bill Aubrey

Title: Regulatory Specialist

E-mail Address: baubrey@rkixp.com

Date: 10-2-08 Phone: 405.996.5750

OIL CONSERVATION DIVISION

Approved by: *Jim W. Green*  
Title: *District II Supervisor*

Approval Date: 10/15/08 Expiration Date: 10/15/10

Conditions of Approval Attached  NOTE THE ACK. & HOWL ON PRODUCTION CSC

*JRB*

DISTRICT I  
1625 N. French Dr., Hobbs, NM 88240

DISTRICT II  
1301 W. Grand Avenue, Artesia, NM 88210

DISTRICT III  
1000 Rio Brazos Rd., Aztec, NM 87410

DISTRICT IV  
1220 S. St. Francis Dr., Santa Fe, NM 87505

State of New Mexico  
Energy, Minerals and Natural Resources Department

Form C-102  
Revised October 12, 2005

Submit to Appropriate District Office  
State Lease - 4 Copies  
Fee Lease - 3 Copies

OIL CONSERVATION DIVISION  
1220 South St. Francis Dr.  
Santa Fe, New Mexico 87505

AMENDED REPORT

WELL LOCATION AND ACREAGE DEDICATION PLAT

API Number	Pool Code 8090	Pool Name Brushy Draw; Delaware E
Property Code 36900	Property Name RDX "16"	Well Number 7
OGRID No. 246289	Operator Name RKI EXPLORATION & PRODUCTION	Elevation 3071'

Surface Location

UL or lot No.	Section	Township	Range	Lot Idn	Feet from the	North/South line	Feet from the	East/West line	County
H	16	26 S	30 E		1650	NORTH	990	EAST	EDDY

Bottom Hole Location If Different From Surface

UL or lot No.	Section	Township	Range	Lot Idn	Feet from the	North/South line	Feet from the	East/West line	County

Dedicated Acres	Joint or Infill	Consolidation Code	Order No.

NO ALLOWABLE WILL BE ASSIGNED TO THIS COMPLETION UNTIL ALL INTERESTS HAVE BEEN CONSOLIDATED OR A NON-STANDARD UNIT HAS BEEN APPROVED BY THE DIVISION

<p style="text-align: center;">SURFACE LOCATION</p> <p>LAT N.: 32°02'43.35" LONG W.: 103°52'51.17" SPC N.: 380536.320 E.: 681524.253 (NAD-83)</p>	1650'	<p style="text-align: center;">OPERATOR CERTIFICATION</p> <p><i>I hereby certify that the information contained herein is true and complete to the best of my knowledge and belief, and that this organization either owns a working interest or unleased mineral interest in the land including the proposed bottom hole location pursuant to a contract with an owner of such a mineral or working interest, or to a voluntary pooling agreement or a compulsory pooling order heretofore entered by the division.</i></p> <p><i>Bruce Aubrey</i> 10-2-08 Signature Date</p> <p><i>Bruce Aubrey</i> Printed Name</p>	
	990'		<p style="text-align: center;">SURVEYOR CERTIFICATION</p> <p><i>I hereby certify that the well location shown on this plat was plotted from field notes of actual surveys made by me or under my supervision and that the same is true and correct to the best of my belief.</i></p> <p style="text-align: center;">JULY 25, 2008</p> <p>Date Surveyed</p> <p><i>Gary L. Jones</i> Signature &amp; Seal Professional Surveyor</p> <p style="text-align: center;">7977</p> <p>W.C. 1983</p> <p>Certificate No. Gary L. Jones 7977</p> <p style="text-align: center;">BASIN SURVEYS</p>

SECTION 16, TOWNSHIP 26 SOUTH, RANGE 30 EAST, N.M.P.M.,  
 EDDY COUNTY, NEW MEXICO.

150' NORTH  
 OFF SET  
 3072.6'  
 □

RKI EXPLORATION & PRODUCTION

RDX "16" #7  
 ELEV. - 3071'

150' WEST  
 OFF SET □  
 3070.5'

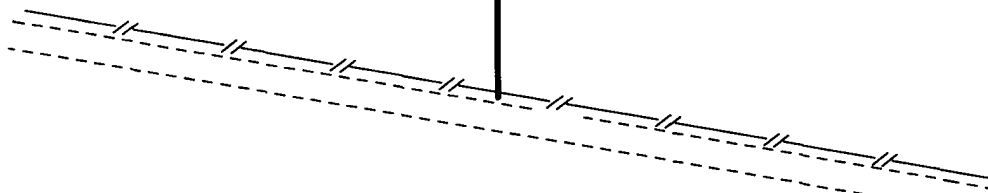
150' EAST  
 OFF SET □  
 3072.6'

○  
 LAT-N 32°02'43.35"  
 LONG-W 103°52'51.12"  
 (NAD-83)

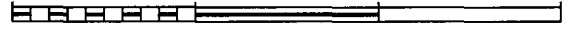
□  
 150' SOUTH  
 OFF SET  
 3071.3'



PROPOSED LEASE ROAD 1031.1'



200 0 200 400 FEET



SCALE: 1" = 200'

**DIRECTIONS TO LOCATION:**

FROM THE JUNCTION OF HWY 285 AND LONGHORN,  
 GO EAST 3.9 MILES TO SECOND ROAD ON RIGHT  
 PAST A LOW WATER CROSSING, GO EAST 5.9 MILES  
 TO LEAS ROAD, ON LEASE ROAD GO SOUTH 1.2  
 MILES TO 2-TRACK, GO EAST TO PROPOSED  
 LOCATION.

**BASIN SURVEYS** P.O. BOX 1786--HOBBS, NEW MEXICO

W.O. Number: 19983

Drawn By: J. M. SMALL

Date: 07-30-2008

Disk: JMS 19983

**RKI EXPLORATION & PRODUCTION**

REF: RDX "16" #7 / Well Pad Topo

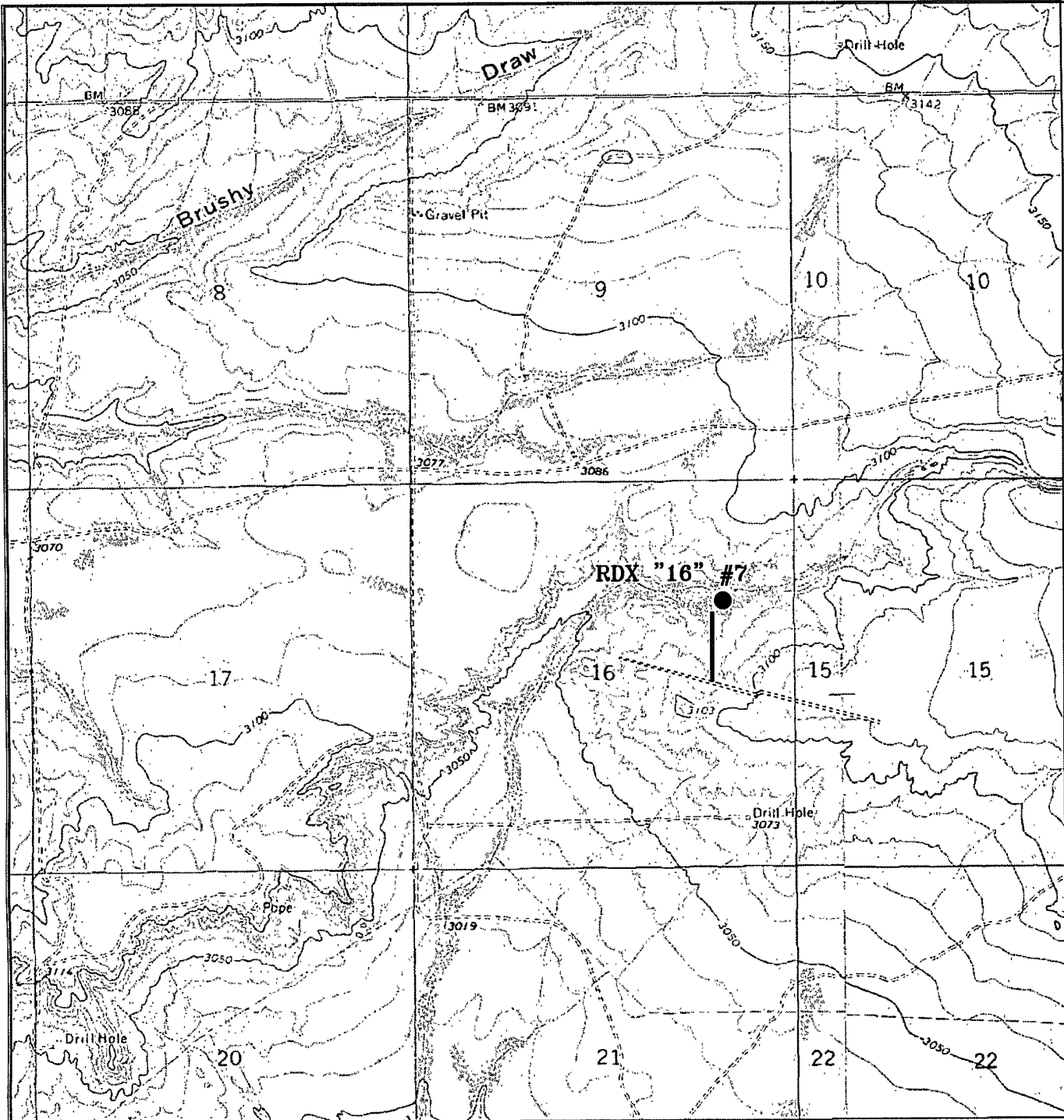
THE RDX "16" #7 LOCATED 1650' FROM

THE NORTH LINE AND 990' FROM THE EAST LINE OF  
 SECTION 16, TOWNSHIP 26 SOUTH, RANGE 30 EAST,

N.M.P.M., EDDY COUNTY, NEW MEXICO.

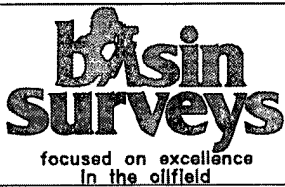
Survey Date: 07-27-2008

Sheet 1 of 1 Sheets



**RDX "16" #7**

Located at 1650' FNL AND 990' FEL  
 Section 16, Township 26 South, Range 30 East,  
 N.M.P.M., Eddy County, New Mexico.



P.O. Box 1786  
 1120 N. West County Rd.  
 Hobbs, New Mexico 88241  
 (505) 393-7316 - Office  
 (505) 392-3074 - Fax  
 basinsurveys.com

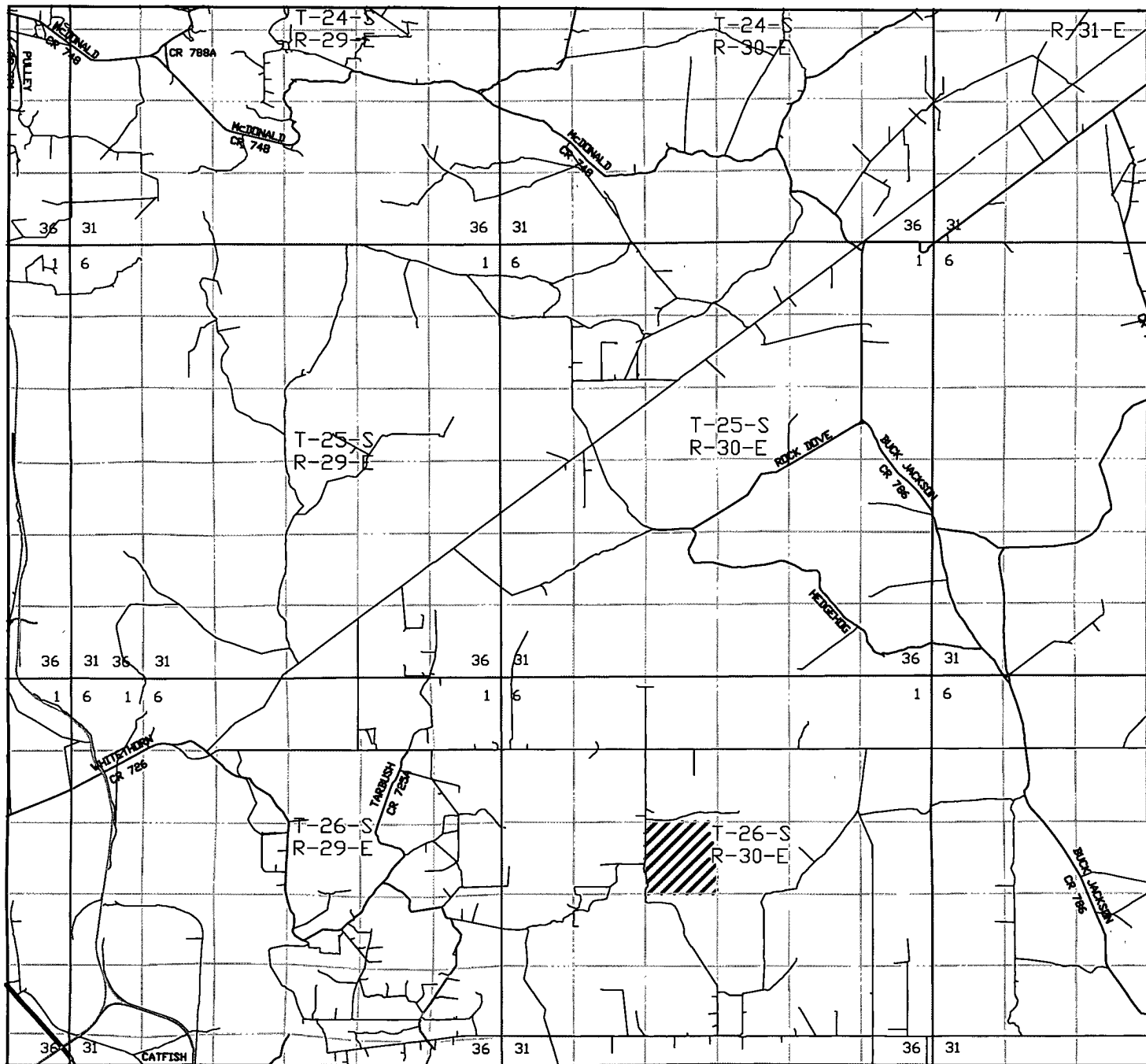
W.O. Number: 19983

Survey Date: 07-27-2008

Scale: 1" = 2000'

Date: 07-30-2008

**RKI**  
**EXPLORATION &**  
**PRODUCTION**



RDX "16" #7  
 Located at 1650' FNL and 990' FEL  
 Section 16, Township 26 South, Range 30 East,  
 N.M.P.M., Eddy County, New Mexico.

**basin**  
**surveys**  
 focused on excellence  
 in the oilfield

P.O. Box 1786  
 1120 N. West County Rd.  
 Hobbs, New Mexico 88241  
 (505) 393-7316 - Office  
 (505) 392-3074 - Fax  
 basin-surveys.com

W.O. Number: JMS 19983

Survey Date: 07-27-2008

Scale: 1" = 2 MILES

Date: 07-30-2008

RKI  
 EXPLORATION &  
 PRODUCTION