

UNITED STATES  
DEPARTMENT OF THE INTERIOR  
BUREAU OF LAND MANAGEMENT

OCD-ARTESIA

FORM APPROVED  
OMB NO 1004-0137  
Expires: March 31, 2007

WELL COMPLETION OR RECOMPLETION REPORT AND LOG

1a Type of Well ☒ Oil Well ☐ Gas Well ☐ Dry ☐ Other  
b Type of Completion ☒ New Well ☐ Work Over ☐ Deepen ☐ Plug Back ☐ Diff. Resvr.,  
Other \_\_\_\_\_

2 Name of Operator  
BEPCO, L.P.

3 Address  
P.O. BOX 2760 MIDLAND TX 79702-2760

3.a Phone No. (Include area code)  
(432)683-2277

4 Location of Well (Report location clearly and in accordance with Federal requirements)\*

At Surface UL N, 800' FSL, 2280' FWL LAT N32.212472, LONG W103.922139

At top prod interval reported below SAME

At total depth SAME

**CONFIDENTIAL**

14 Date Spudded  
06/05/2007

15 Date T.D. Reached  
06/18/2007

16 Date Completed  
☐ D & A ☒ Ready to Prod.  
07/17/2007

5. Lease Serial No.  
NMLC 02860

6. If Indian, Allottee or Tribe Name

7. Unit or CA Agreement Name and no  
NMNM 71016X

8. Lease Name and Well No  
POKER LAKE UNIT 289

9. API Well No.  
30-015-35590

10. Field and Pool, or Exploratory  
NASH DRAW-DEL/BS/AV SAND

11. Sec, T, R, M, on Block and  
Survey or Area SEC 18, T24S, R30E

12. County or Parish  
EDDY

13. State  
NM

17. Elevations (DF, RKB, RT, GL)\*  
3145' GL

18 Total Depth. MD 7372'  
TVD

19. Plug Back T.D.: MD 7370'  
TVD

20. Depth Bridge Plug Set. MD  
TVD

21 Type of Electric & Other Mechanical Logs Run (Submit copy of each)  
GR-CLN-LDT; GR-AIT

22. Was well cored? ☒ No ☐ Yes (Submit analysis)  
Was DST run? ☒ No ☐ Yes (Submit analysis)  
Directional Survey? ☒ No ☐ Yes (Submit copy)

23 Casing and Liner Record (Report all strings set in well)

Hole Size	Size/Grade	Wt. (#/ft)	Top (MD)	Bottom (MD)	Stage Cement Depth	No. of Sks & Type of Cement	Slurry Vol. (BBL)	Cement Top*	Amount Pulled
12-1/4"	8-5/8"	32#	0'	632'		905		0' TOP OUT	
7-7/8"	5-1/2"	15.5 & 17#	0'	7371'	5005'	1970		0' CIRC.	

24. Tubing Record

Size	Depth Set (MD)	Packer Depth (MD)	Size	Depth Set (MD)	Packer Depth (MD)	Size	Depth Set (MD)	Packer Depth (MD)
2-7/8"	7325' SN	6843' TAC						

25 Producing Intervals

26. Perforation Record

Formation	Top	Bottom	Perforated Interval	Size	No. Holes	Perf. Status
A) DELAWARE	6996	7290'	6996'-7011'	0.38	15	PRODUCING
B)			7140-7145'	0.38	5	PRODUCING
C)			7270-7290'	0.38	20	PRODUCING
D)						

27 Acid, Fracture, Treatment, Cement Squeeze, Etc.

Depth Interval	Amount and Type of Material
6996-7145'	FRACTURED FORMATION W/ 116028 GALS PRODUCED WATER AND 12000# 14/30 LITE PROP
7270'-7290'	FRACTURED FORMATION W/ 108228 GALS PRODUCED WATER AND 10000# 14/30 LITE PROP

28 Production - Interval A

Date First Produced	Test Date	Hours Tested	Test Production	Oil BBL	Gas MCF	Water BBL	Oil Gravity Corr API	Gas Gravity	Production Method
07/17/07	07/30/07	24	→	158	200	206			PUMPING
Choke Size	Tbg Press Flwg SI	Csg. Press	24 Hr Rate	Oil BBL	Gas MCF	Water BBL	Gas Oil Ratio	Well Status	
24/64"	300	220	→				1266	PRODUCING	

ACCEPTED FOR RECORD

AUG 15 2007

JERRY FANT  
PETROLEUM GEOLOGIST

Production - Interval B

Date First Produced	Test Date	Hours Tested	Test Production	Oil BBL	Gas MCF	Water BBL	Oil Gravity Corr API	Gas Gravity	Production Method
			→						
Choke Size	Tbg Press Flwg SI	Csg. Press	24 Hr. Rate	Oil BBL	Gas MCF	Water BBL	Gas Oil Ratio	Well Status	
			→						

## 28b Production - Interval C

Date First Produced	Test Date	Hours Tested	Test Production →	Oil BBL	Gas MCF	Water BBL	Oil Gravity Corr. API	Gas Gravity	Production Method
Choke Size	Tbg. Press Flwg. SI	Csg. Press.	24 Hr. Rate →	Oil BBL	Gas MCF	Water BBL	Gas : Oil Ratio	Well Status	

## 28c. Production - Interval D

Date First Produced	Test Date	Hours Tested	Test Production →	Oil BBL	Gas MCF	Water BBL	Oil Gravity Corr. API	Gas Gravity	Production Method
Choke Size	Tbg. Press Flwg. SI	Csg. Press.	24 Hr. Rate →	Oil BBL	Gas MCF	Water BBL	Gas : Oil Ratio	Well Status	

29. Disposition of Gas (Sold, used for fuel, vented, etc.)

SOLD

30 Summary of Porous Zones (Include Aquifers):

Show all important zones or porosity and contents thereof: Cored intervals and all drill-stem tests, including depth interval tested, cushion used, time tool open, flowing and shut-in pressures and recoveries.

31. Formation (Log) Markers

Formation	Top	Bottom	Descriptions, Contents, etc.	Name	Top
					Meas. Depth
				RUSTLER	289'
				T/SALT	650'
				B/SALT	3202'
				LAMAR	3415'
				CHERRY CANYON	4268'
				LO. CHERRY CANYON	5496'
				BRUSHY CANYON	5586'
				LO. BRUSHY CANYON	6919'
				BONE SPRING LIME	7160'
				AVALON SAND	7268'
				B/AVALON SAND	7325'

32. Additional remarks (include plugging procedure):

33. Indicate which items have been attached by placing a check in the appropriate boxes.

- ☒ Electrical/Mechanical Logs (1 full set req'd.)   
 ☐ Geological Report   
 ☐ DST Report   
 ☐ Directional Survey  
☐ Sundry Notice for plugging and cement verification   
 ☐ Core Analysis   
 ☐ Other

34 I hereby certify that the foregoing and attached information is complete and correct as determined from all available records (see attached instructions)\*

Name (please print) ANN MOORETitle PRODUCTION CLERK

Signature

Date 08/10/2007

Title 18 U.S.C. Section 101 and Title 43 U.S.C. Section 1212, make it a crime for any person knowingly and willfully to make to any department or agency of the United States and false, fictitious or fraudulent statements or representations as to any matter within its jurisdiction.

DISTRICT I  
1625 N. French Dr., Hobbs, NM 88240

DISTRICT II  
1301 W. Grand Avenue, Artesia, NM 88210

DISTRICT III  
1000 Rio Brazos Rd., Aztec, NM 87410

DISTRICT IV  
1220 St. Francis Dr., Santa Fe, NM 87505

State of New Mexico  
Energy, Minerals and Natural Resources Department

Form C-102  
Revised October 12, 2005

Submit to Appropriate District Office  
State Lease - 4 Copies  
Fee Lease - 3 Copies

OIL CONSERVATION DIVISION  
1220 South St. Francis Dr.  
Santa Fe, New Mexico 87505

☐ AMENDED REPORT

WELL LOCATION AND ACREAGE DEDICATION PLAT

API Number <b>30-015-35590</b>	Pool Code 47545	Pool Name Nash Draw (Dela/Bone Spring/Avalon Sd)
Property Code <b>001796</b>	Property Name POKER LAKE UNIT	Well Number 289
UGRID No. 001801	Operator Name BEPCO, L.P.	Elevation 3145'

Surface Location

UL or lot No.	Section	Township	Range	Lot Idn	Feet from the	North/South line	Feet from the	East/West line	County
N	18	24 S	30 E		800	SOUTH	2280	WEST	EDDY

Bottom Hole Location If Different From Surface

UL or lot No.	Section	Township	Range	Lot Idn	Feet from the	North/South line	Feet from the	East/West line	County
Dedicated Acres 40	Joint or Infill N	Consolidation Code	Order No.						

NO ALLOWABLE WILL BE ASSIGNED TO THIS COMPLETION UNTIL ALL INTERESTS HAVE BEEN CONSOLIDATED  
OR A NON-STANDARD UNIT HAS BEEN APPROVED BY THE DIVISION

LOT 1 39.91 ACRES			
LOT 2 39.96 ACRES	80.00 ACRES	160.00 ACRES	
LOT 3 40.08 ACRES			
LOT 4 40.07 ACRES	80.00 ACRES	160.00 ACRES	

2280'

3147.3' 3150.2'

3141.2' 3149.4'

LAT - N32°12'44.9"  
LONG - W103°55'19.7"  
(NAD-83)

**OPERATOR CERTIFICATION**

I hereby certify that the information contained herein is true and complete to the best of my knowledge and belief, and that this organization either owns a working interest or unleased mineral interest in the land including the proposed bottom hole location pursuant to a contract with an owner of such a mineral or working interest, or to a voluntary pooling agreement or a compulsory pooling order heretofore entered by the division.

*Gary E. Gerhard* 2/22/07  
Signature Date

Gary E. Gerhard  
Printed Name

**SURVEYOR CERTIFICATION**

I hereby certify that the well location shown on this plat was plotted from field notes of actual surveys made by me or under my supervision, and that the same is true and correct to the best of my belief.

JANUARY 04 2007

Date Surveyed

Signature of Surveyor

Professional Surveyor

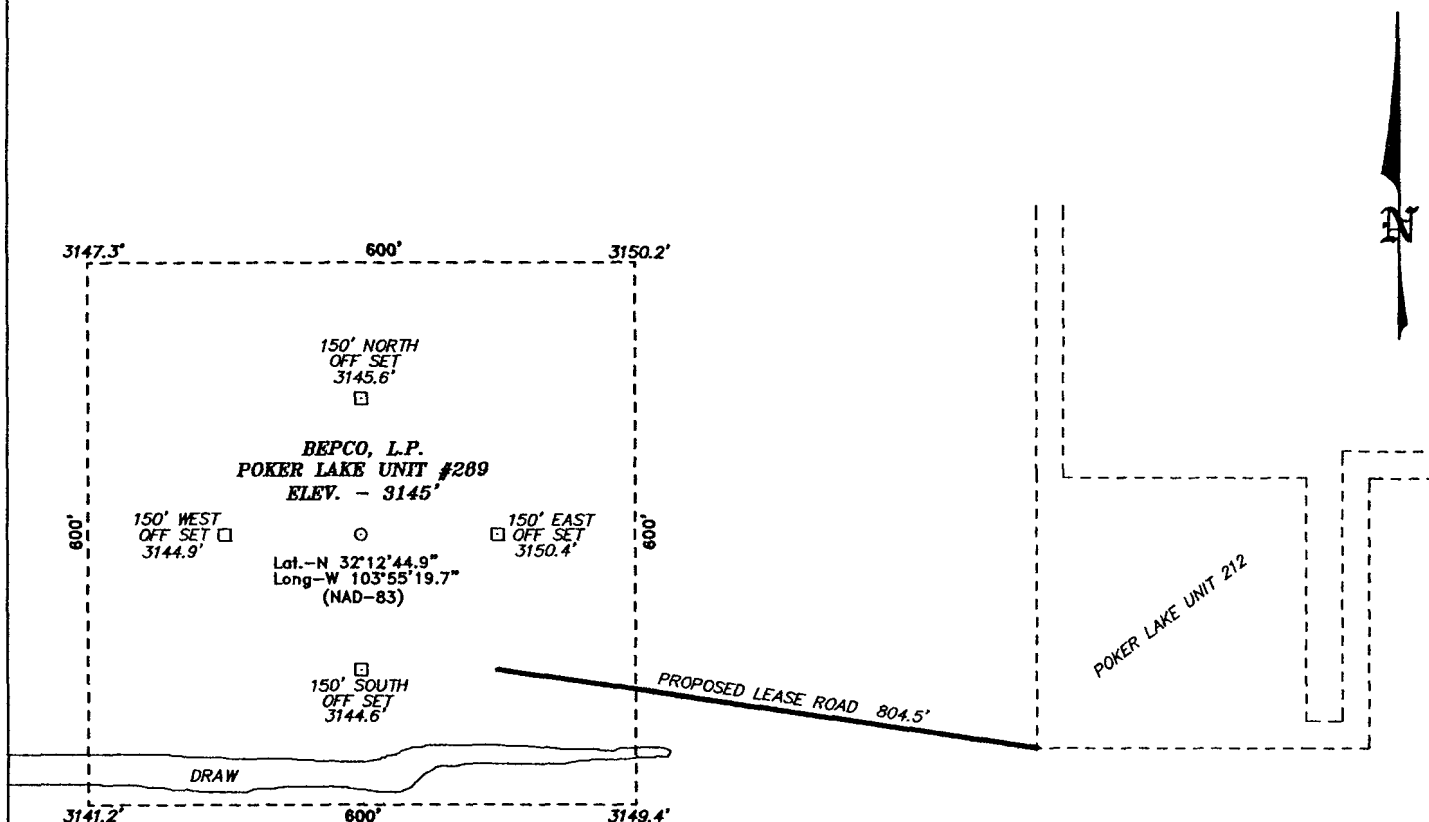
7977

7806

Certificate No. Gary L. Jones 7977

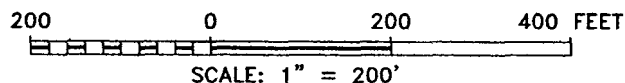
BASIN SURVEYS

SECTION 18, TOWNSHIP 24 SOUTH, RANGE 30 EAST, N.M.P.M.,  
EDDY COUNTY, NEW MEXICO.



DIRECTIONS TO LOCATION:

FROM THE JUNCTION OF STATE HWY 128 AND CO. RD. 793 (RAWHIDE), PROCEED SOUTH ON CO. RD. 793 11.2 MILES TO LEASE ROAD, ON LEASE ROAD GO WEST 0.4 MILES PAST #213 TANK BATTERY TO THE 212 AND PROPOSED LEASE ROAD.



**BEPCO, L.P.**

REF: POKER LAKE UNIT #289 / WELL PAD AND TOPO

THE POKER LAKE UNIT No. 289 LOCATED 800'  
FROM THE SOUTH LINE AND 2280' FROM THE WEST LINE OF  
SECTION 18, TOWNSHIP 24 SOUTH, RANGE 30 EAST,

N.M.P.M., EDDY COUNTY, NEW MEXICO.

**BASIN SURVEYS** P.O. BOX 1786-HOBBS, NEW MEXICO

W.O. Number: 17606

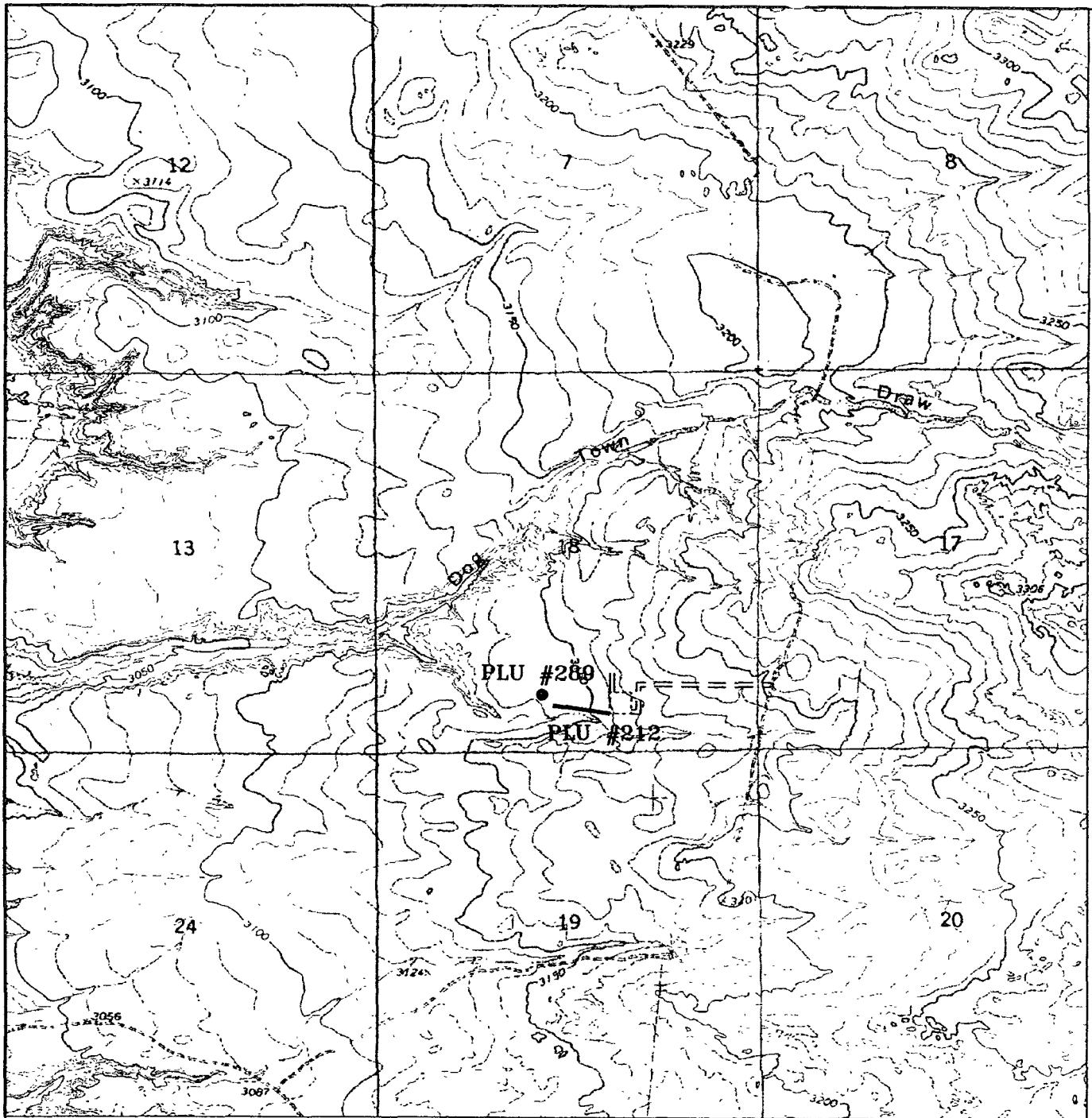
Drawn By: J. SMALL

Date: 01-08-2007

Disk: 17606W JMS

Survey Date: 01-04-2007

Sheet 1 of 1 Sheets



**POKER LAKE UNIT #289**  
 800' FSL and 2280' FWL  
 Section 18, Township 24 South, Range 30 East,  
 N.M.P.M., Eddy County, New Mexico.



P.O. Box 1786  
 1120 N. West County Rd.  
 Hobbs, New Mexico 88241  
 (505) 393-7316 - Office  
 (505) 392-3074 - Fax  
 basinsurveys.com

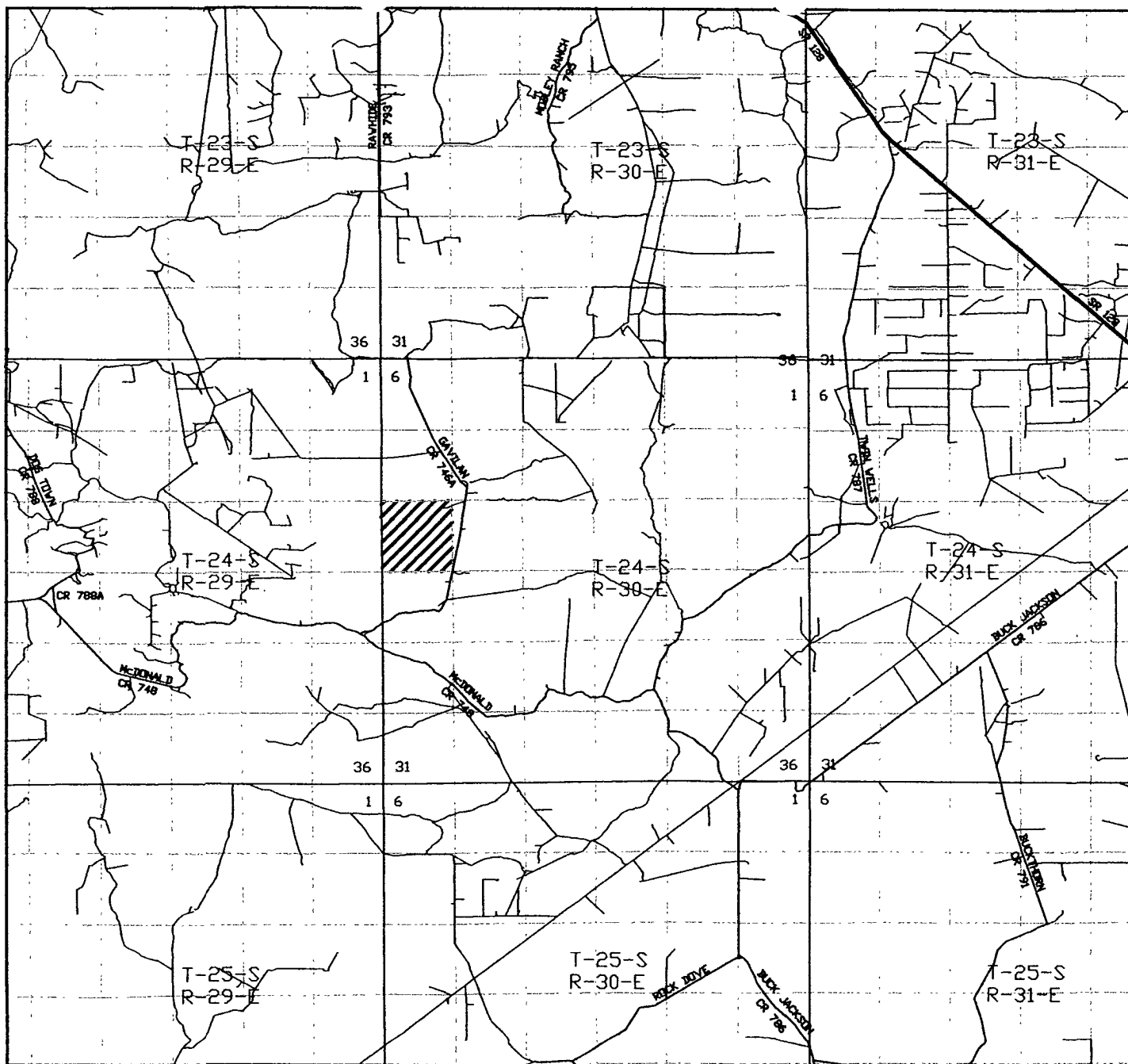
W O Number JMS 17606T

Survey Date: 01-04-2007

Scale: 1" = 2000'

Date: 01-08-2007

**BEPCO, L.P.**



POKER LAKE UNIT #289

800' FSL and 2280' FWL

Section 18, Township 24 South, Range 30 East,  
N.M.P.M., Eddy County, New Mexico.

**basin**  
**surveys**

focused on excellence  
in the oilfield

P.O. Box 1786  
1120 N. West County Rd.  
Hobbs, New Mexico 88241  
(505) 393-7316 - Office  
(505) 392-3074 - Fax  
basinsurveys.com

W.O. Number: JMS 17606TR

Survey Date: 01-04-2007

Scale: 1" = 2000'

Date: 01-08-2007

BEPCO, L.P.