

DEC - 1 2008

OCD-ARTESIA

OCD-ARTESIA

ATS-09-31

Form 3160-3
(April 2004)UNITED STATES
DEPARTMENT OF THE INTERIOR
BUREAU OF LAND MANAGEMENT

APPLICATION FOR PERMIT TO DRILL OR REENTER

FORM APPROVED
OMB No 1004-0137
Expires March 31, 2007

1a. Type of work <input checked="" type="checkbox"/> DRILL <input type="checkbox"/> REENTER		5 Lease Serial No NM 102035
1b. Type of Well <input checked="" type="checkbox"/> Oil Well <input type="checkbox"/> Gas Well <input type="checkbox"/> Other <input type="checkbox"/> Single Zone <input type="checkbox"/> Multiple Zone		6 If Indian, Allottee or Tribe Name
2 Name of Operator BEPCO, L. P.		7 If Unit or CA Agreement, Name and No
3a Address P. O. Box 2760 Midland, TX 79702	3b Phone No. (include area code) 432-683-2277	8 Lease Name and Well No. Brushy Draw 6 Federal #1
4 Location of Well (Report location clearly and in accordance with any State requirements *) At surface 2225' FNL, 700' FWL, Lat N32.072881, Lon W103.926983 At proposed prod zone		9 API Well No 30-015-36777
10 Field and Pool, or Exploratory Corral Canyon S(Dela, BS, Avln Sd)		11 Sec, T R M or Blk and Survey or Area 26S Sec 6, T25S, R30E, MER NMP
14 Distance in miles and direction from nearest town or post office* 14 miles East of Malaga, NM		12 County or Parish Eddy County
13 State NM		
15 Distance from proposed* location to nearest property or lease line, ft (Also to nearest drig unit line, if any) 700'	16 No of acres in lease 962	17 Spacing Unit dedicated to this well 40
18 Distance from proposed location* to nearest well, drilling, completed, applied for, on this lease, ft None	19 Proposed Depth 7650'	20 BLM/BIA Bond No. on file NM 2204
21 Elevations (Show whether DF, KDB, RT, GL, etc) 3073' GL	22 Approximate date work will start* 12/15/2008	23 Estimated duration 14 days

24. Attachments

The following, completed in accordance with the requirements of Onshore Oil and Gas Order No 1, shall be attached to this form

- | | |
|---|--|
| 1 Well plat certified by a registered surveyor | 4 Bond to cover the operations unless covered by an existing bond on file (see Item 20 above). |
| 2 A Drilling Plan | 5 Operator certification |
| 3 A Surface Use Plan (if the location is on National Forest System Lands, the SUPO shall be filed with the appropriate Forest Service Office) | 6 Such other site specific information and/or plans as may be required by the authorized officer |

25 Signature <i>Annette Childers</i>	Name (Printed/Typed) Annette Childers	Date 10-8-08
Title Administrative Assistant		

Approved by (Signature) <i>/s/ James Stovall</i>	Name (Printed/Typed) <i>/s/ James Stovall</i>	Date NOV 25 2008
Title FIELD MANAGER	Office CARLSBAD FIELD OFFICE	

Application approval does not warrant or certify that the applicant holds legal or equitable title to those rights in the subject lease which would entitle the applicant to conduct operations thereon

Conditions of approval, if any, are attached

APPROVAL FOR TWO YEARS

Title 18 USC Section 1001 and Title 43 USC Section 1212, make it a crime for any person knowingly and willfully to make to any department or agency of the United States any false, fictitious or fraudulent statements or representations as to any matter within its jurisdiction

*(Instructions on page 2)

NOTIFY OCD 24-hrs PRIOR to Spud
NOTIFY OCD of ALL Lost Circulation and
Water Flow Zones
NOTIFY OCD per 19.15.3.118 of H2S
Values WHILE Drilling.

SEE ATTACHED FOR
CONDITIONS OF APPROVAL

Handwritten:
ENTERED
12-3-08

PROVAL SUBJECT TO
GENERAL REQUIREMENTS
AND SPECIAL STIPULATIONS
ATTACHED



"Gerhard, Gary E"
<GEGerhard@BassPet.Com
>

11/21/2008 02:41 PM

To <Betty_Hill@NM.BLM.GOV>

cc

bcc

Subject Lot number Brushy Draw 6 Federal #1

Betty

Thank you for your call pointing out the mistake on the plat regarding the Lot number. Please change your copy to show the correct number.

Gary Gerhard
Drilling Eng
BEPCO

G13 Sec 6 726SR30E.

L3
40.22

36

31

32

L4
40.07

L1
40.08

1

6

5

L2
40.23

L3
40.39

L4
40.54

12

7

8

L1
40.59

L2
40.52

DISTRICT I

1625 N. French Dr., Hobbs, NM 88240

DISTRICT II

1301 W. Grand Avenue, Artesia, NM 88210

DISTRICT III

1000 Rio Brazos Rd., Asteo, NM 87410

DISTRICT IV

1220 St. Francis Dr., Santa Fe, NM 87505

State of New Mexico
Energy, Minerals and Natural Resources Department

OIL CONSERVATION DIVISION

1220 South St. Francis Dr.
Santa Fe, New Mexico 87505

Form C-102

Revised October 12, 2005

Submit to Appropriate District Office

State Lease - 4 Copies

Fee Lease - 3 Copies

☐ AMENDED REPORT

WELL LOCATION AND ACREAGE DEDICATION PLAT

API Number 30.015.36777	Pool Code 96620	Pool Name Corral Canyon S (Delaware, Bone Spring, Avalon Sd)
Property Code 37492	Property Name BRUSHY DRAW "6" FEDERAL	Well Number 1
OGRID No. 001801	Operator Name BEPCO, L.P.	Elevation 3073'

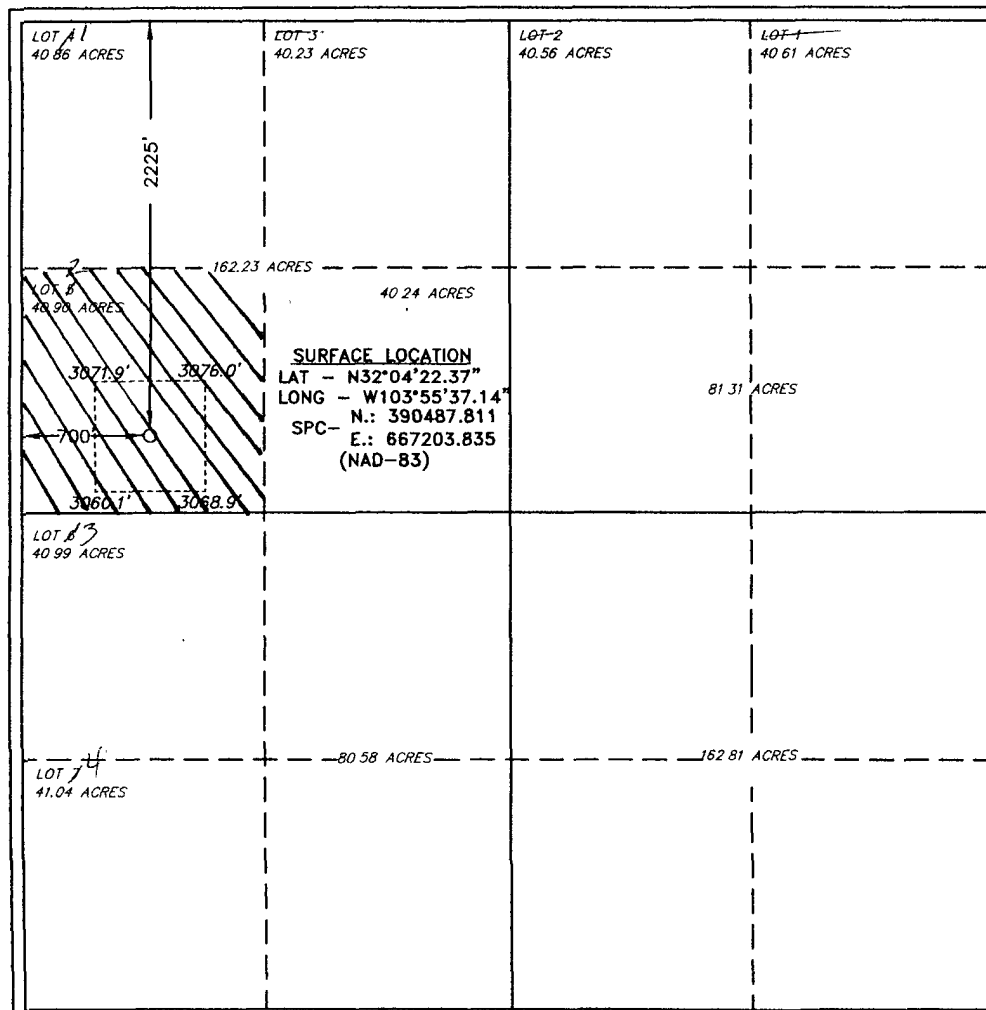
Surface Location

UL or lot No.	Section	Township	Range	Lot Idn	Feet from the	North/South line	Feet from the	East/West line	County
LOT #2	6	26 S	30 E		2225	NORTH	700	WEST	EDDY

Bottom Hole Location If Different From Surface

UL or lot No.	Section	Township	Range	Lot Idn	Feet from the	North/South line	Feet from the	East/West line	County
Dedicated Acres 40	Joint or Infill N	Consolidation Code	Order No.						

NO ALLOWABLE WILL BE ASSIGNED TO THIS COMPLETION UNTIL ALL INTERESTS HAVE BEEN CONSOLIDATED
OR A NON-STANDARD UNIT HAS BEEN APPROVED BY THE DIVISION



OPERATOR CERTIFICATION

I hereby certify that the information contained herein is true and complete to the best of my knowledge and belief, and that this organization either owns a working interest or unleased mineral interest in the land including the proposed bottom hole location pursuant to a contract with an owner of such a mineral or working interest, or to a voluntary pooling agreement or a compulsory pooling order heretofore entered by the division.

Gary E. Gerhard 10/8/08
Signature Date

Gary E. Gerhard

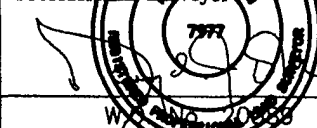
Printed Name

SURVEYOR CERTIFICATION

I hereby certify that the well location shown on this plat was plotted from field notes of actual surveys made by me or under my supervision and that the same is true and correct to the best of my belief.

SEPTEMBER 17, 2008

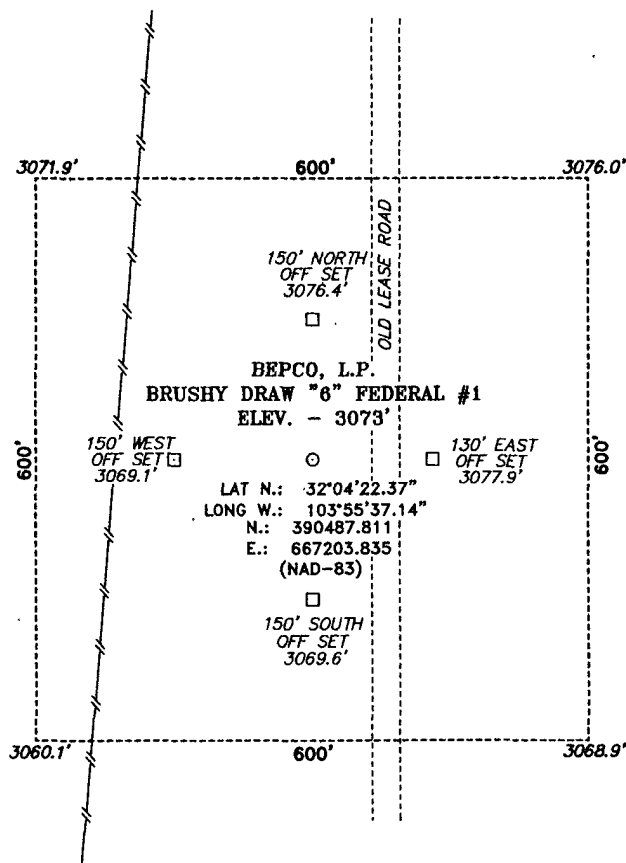
Date Surveyed
Signature of Gary L. Jones
Professional Surveyor



Certificate No. Gary L. Jones 7977

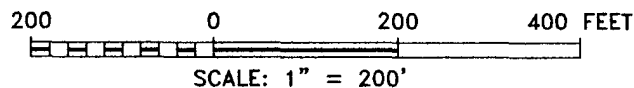
BASIN SURVEYS

**SECTION 6, TOWNSHIP 26 SOUTH, RANGE 30 EAST, N.M.P.M.,
EDDY COUNTY, NEW MEXICO.**



DIRECTIONS TO LOCATION:

FROM MILE MARKER 4 ON PECOS HWY, GO 0.1 MILES SOUTH TO CO. RD. 725, ON CO. RD. 725 GO 7.4 MILES TO A "Y" STAY ON CO. RD. 725 AND GO 8.9 MILES TO CO. RD. 725A (TARBUSH), ON TARBUSH GO 2.3 MILES TO ELPASO ROAD, ON ELPASO ROAD GO EAST 1.4 MILES TO AN OLD LEASE ROAD, GO NORTH 0.6 MILES TO PROPOSED LOCATION.



BASIN SURVEYS P.O. BOX 1786 - HOBBS, NEW MEXICO

W.O. Number: 20589

Drawn By: J. SMALL

Date: 10-01-2008

Disk: 20589 JMS

BEPCO, L.P.

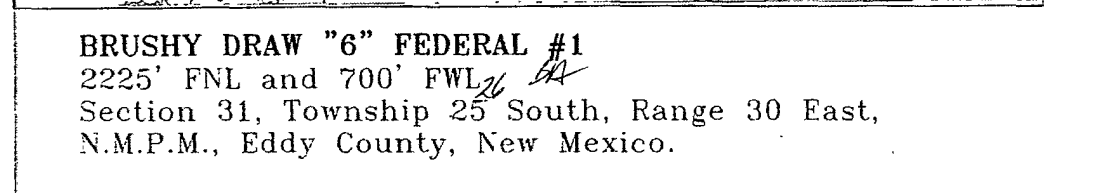
REF: BRUSHY DRAW "6" FEDERAL #1 / WELL PAD AND TOPO

THE BRUSHY DRAW "6" FEDERAL #1 LOCATED 2225'
FROM THE NORTH LINE AND 700' FROM THE WEST LINE OF
SECTION 6, TOWNSHIP 26 SOUTH, RANGE 30 EAST,

N.M.P.M., EDDY COUNTY, NEW MEXICO.

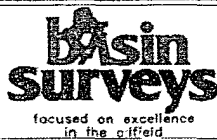
Survey Date: 09-24-2008

Sheet 1 of 1 Sheets



2225' FNL and 700' FWL₂₆ *BA*

Section 31, Township 25 South, Range 30 East,
N.M.P.M., Eddy County, New Mexico.



P.O. Box 1786
1120 N. West County Rd.
Hobbs, New Mexico 88241
(575) 393-7316 - Office
(575) 392-2206 - Fax
basinsurveys.com

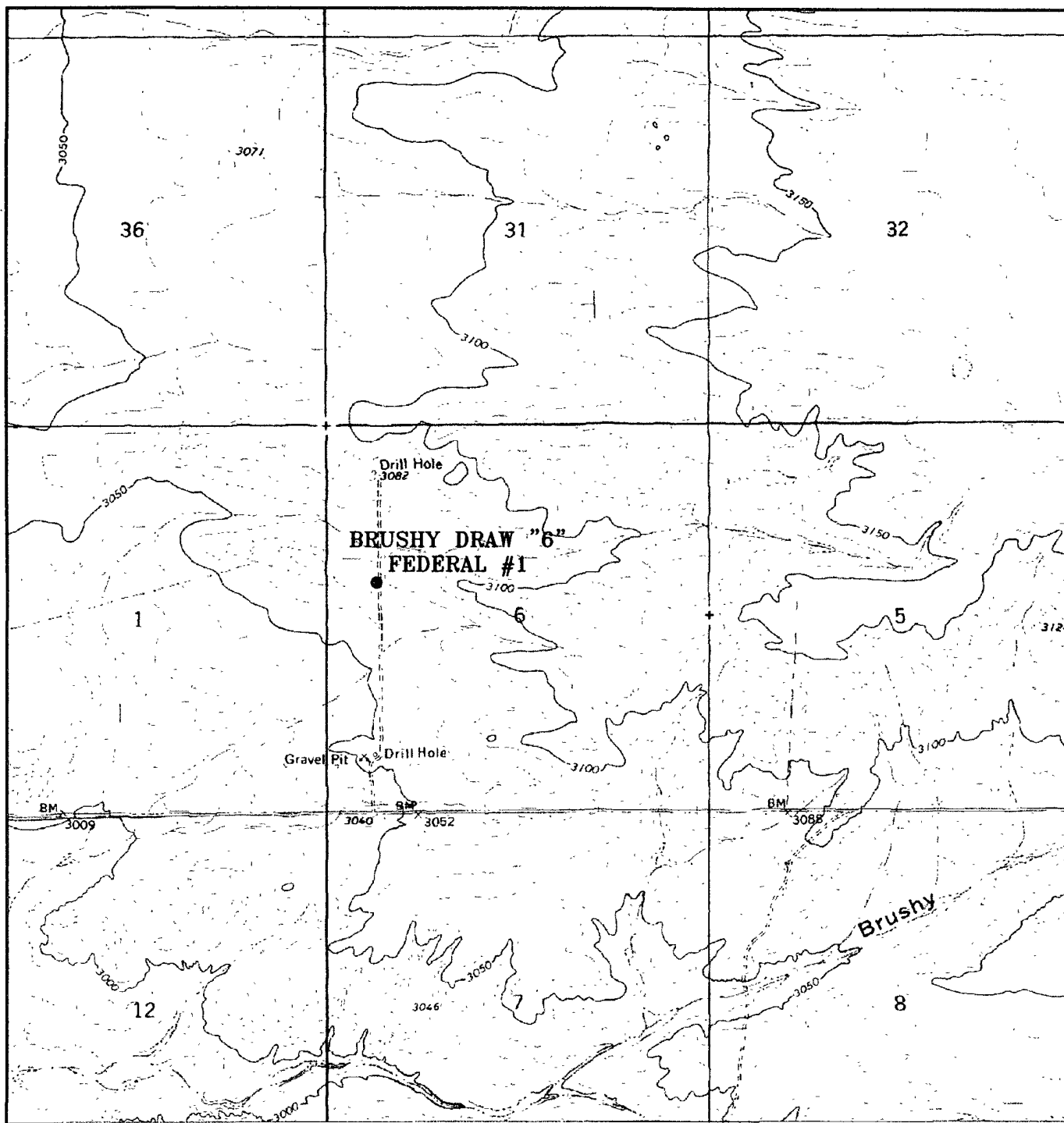
W O Number: JMS 20589

Survey Date	09-24-2008
-------------	------------

Scale: 1" = 2000'

Date 10-01-2008

BEPCO, L.P.



BRUSHY DRAW "6" FEDERAL #1

2225' FNL and 700' FWL

Section 31, Township 25 South, Range 30 East,
N.M.P.M., Eddy County, New Mexico.



P.O. Box 1786
1120 N. West County Rd.
Hobbs, New Mexico 88241
(575) 393-7316 - Office
(575) 392-2206 - Fax
basinsurveys.com

W.O. Number: JMS 20589

Survey Date: 09-24-2008

Scale: 1" = 2000'

Date: 10-01-2008

BEPCO, L.P.

Surface casing to be set into the Rustler below all fresh water sands.

Production casing will be cemented using Schlumberger Litecrete (10.5 ppg & 10.2 ppg) with cement circulated to the surface. Drilling procedure, BOP diagram, anticipated tops and surface plans attached.

This well is located outside the Secretary's Potash area and outside the R-111 Potash area. There are no potash leases within 1 mile of the location.

Closed Loop Drilling System will be used.

BEPCO, L.P.

P. O. Box 2760
Midland, Texas 79702

432-683-2277

FAX-432-687-0329

Bureau of Land Management
Carlsbad Field Office
620 East Green Street
Carlsbad, New Mexico 88220-6292

Gentlemen:

BEPCO, L.P. respectfully requests exception to the Prairie Chicken timing restrictions for this location - 2225' FNL, 700' FWL, of Section 6, T25S, R30E, Eddy County, New Mexico.

26

Sincerely,

A handwritten signature in cursive script, appearing to read "Gary Gerhard", written over a horizontal line.

Gary Gerhard,
Drilling Engineer

**EIGHT POINT DRILLING PROGRAM
BEPCO, L.P.**

NAME OF WELL: Brushy Draw 6 Federal #1

LEGAL DESCRIPTION - SURFACE: 2225' FNL, 700' FWL, of Section 6, T-²⁶~~25~~-S, R-30-E, Eddy County, NM.

POINT 1: ESTIMATED FORMATION TOPS

(See No. 2 Below)

POINT 2: WATER, OIL, GAS AND/OR MINERAL BEARING FORMATIONS

Anticipated Formation Tops: KB 3093' (est) GL 3073'

<u>FORMATION</u>	<u>ESTIMATED TOP FROM KB</u>	<u>ESTIMATED SUBSEA TOP</u>	<u>BEARING</u>
T/Rustler	716'	+2377'	
B/Rustler	1576'	+1517'	Barren
T/Salt	1616'	+1477'	Barren
B/Salt	3136'	-43'	Barren
T/Lamar	3387'	-294'	Oil/Gas
T/Ramsey	3424'	-331'	Oil/Gas
T/L. Cherry Canyon	5521'	-2428'	Oil/Gas
T/L. Brushy Canyon	7031'	-3938'	Oil/Gas
T/Bone Spring	7251'	-4158'	Oil/Gas
T/Avalon	7391'	-4298'	Oil/Gas
TD	7650'	-4404'	Oil/Gas

POINT 3: CASING PROGRAM

<u>TYPE</u>	<u>INTERVALS</u>	<u>Hole Size</u>	<u>PURPOSE</u>	<u>CONDITION</u>
14"	0' - 40'	16"	Conductor	Contractor Discretion
8-5/8", 32#, J-55, LT&C <i>See COA</i>	0' - 812'	12-1/4"	Surface	New
5-1/2", 15.5#, J-55, LT&C	0' - 6300'	7-7/8"	Production	New
5-1/2", 17#, J-55, LT&C	6300' - 7650'	7-7/8"	Production	New

CASING DESIGN SAFETY FACTORS:

<u>TYPE</u>	<u>TENSION</u>	<u>COLLAPSE</u>	<u>BURST</u>
8-5/8", 32#, J-55, LT&C	25.88	9.50	6.75
5-1/2", 15.5#, J-55, LT&C	2.15	1.36	1.49
5-1/2", 17#, J-55, LT&C	14.84	1.37	1.64

DESIGN CRITERIA AND CASING LOADING ASSUMPTIONS:**SURFACE CASING**

Tension	A 1.6 design factor utilizing the effects of buoyancy (9.2 ppg).
Collapse	A 1.0 design factor with full internal evacuation and a collapse force equal to the mud gradient in which the casing will be run (0.48 psi/ft). The effects of axial load on collapse will be considered.
Burst	A 1.3 design factor with a surface pressure equal to the fracture gradient at setting depth less a gas gradient to the surface. Internal burst force at the shoe will be fracture pressure at that depth. Backup pressure will be formation pore pressure. In all cases a conservative fracture pressure will be used such that it represents the upper limit of potential fracture resistance up to a 1.0 psi/ft gradient. The effects of tension on burst will not be utilized.

PRODUCTION CASING

Tension	A 1.6 design factor utilizing the effects of buoyancy (9.2 ppg).
Collapse	A 1.0 design factor with full internal evacuation and a collapse force equal to the mud gradient in which the casing will be run (0.48 psi/ft). The effects of axial load on collapse will be considered.
Burst	A 1.25 design factor with anticipated maximum tubing pressure (3529 psig) on top of the maximum anticipated packer fluid gradient. Backup on production strings will be formation pore pressure. The effects of tension on burst will not be utilized.

POINT 4: PRESSURE CONTROL EQUIPMENT (SEE ATTACHED DIAGRAM)

A BOPE equivalent to requirements of Onshore Oil & Gas Order No. 2 – 3000 psi system (Diagram 1) will be nipped up on the surface casinghead. The BOP stack, choke, kill lines, kelly cocks, inside BOP, etc. when installed on the surface casinghead will be hydro-tested to 250 psig and 3000 psig by an independent tester.

- a) Upon installation
- b) After any component changes
- c) Fifteen days after a previous test
- d) As required by well conditions

A function test to insure that the preventers are operating correctly will be performed on each trip.

POINT 5: MUD PROGRAM

<u>DEPTH</u>	<u>MUD TYPE</u>	<u>WEIGHT</u>	<u>FV</u>	<u>PV</u>	<u>YP</u>	<u>FL</u>	<u>Ph</u>
0' - 812'	FW Spud Mud	8.5 - 9.2	38-70	NC	NC	NC	10.0
812' - 5600'	Brine Water	9.8 - 10.2	28-30	NC	NC	NC	9.5 - 10.5
5600' - TD	BW/Diesel	8.8 - 9.2	40	8	2	<100 cc	9.5 - 10.5

NOTE: May increase vis for logging purposes only.

POINT 6: TECHNICAL STAGES OF OPERATION

A) TESTING

None anticipated.

B) LOGGING

GR-CNL-LDT-AIT from TD to base of Salt (+/- 3139').
GR-CNL-CAL from base of Salt to surface.

C) CONVENTIONAL CORING

None anticipated.

D) CEMENT

<u>INTERVAL</u>	<u>AMOUNT SXS</u>	<u>FILL</u>	<u>TYPE</u>	<u>GALS/SX</u>	<u>PPG</u>	<u>FT³/SX</u>
SURFACE:						
Lead						
0. – 512'	265	512	35:65 Poz Class "C" + 6% D20 + 3% S1 + 5 pps D24 + 0.125 pps D130	10.40	12.6	1.98
(100% excess circ to surface)						
Tail						
512' – 812'	210	300	Class "C" + 2% S1	6.33	14.8	1.34
(100% excess)						
PRODUCTION:						
Stage 1:						
Lead						
5000' – 6000'	110	1000	Litecrete 39/61 (D961/ D124) + 2% bwob D153 + 0.05gps D604AM + 0.03 gps DM45 + 2ppg D24 + 0.04gpsD801	9.875	10.2	2.47
(50% excess)						
Tail						
6000' – 7650'	220	1650	Litecrete 39/61 (D961/ D124)+ 2% bwob D153 + 0.05gps D604AM + 0.03 gps DM45 + 2ppg D24 + 0.04gpsD801	7.336	10.5	2.10
(50% excess)						
DV Tool @ 5000'						
Stage 2:						
Lead						
0' – 4900'	320	4900	Litecrete 39/61 (D961/ D124) + 2% bwob D153 + 0.05gps D604AM + 0.03 gps DM45 + 2ppg D24 + 0.04gpsD801	9.825	10.2	2.37
(50% excess)						

POINT 6: TECHNICAL STAGES OF OPERATION - Cont'd

<u>INTERVAL</u>	<u>AMOUNT SXS</u>	<u>FILL</u>	<u>TYPE</u>	<u>GALS/SX</u>	<u>PPG</u>	<u>FT³/SX</u>
Stage 2: Tail 4900' – 5000' (50% excess)	19	100	Class C	6.33	14.8	1.34

E) DIRECTIONAL DRILLING

No directional services anticipated.

POINT 7: ANTICIPATED RESERVOIR CONDITIONS

Normal pressures are anticipated throughout Delaware section. A BHP of 3381 psi (max) or MWE of 8.7 ppg is expected. Lost circulation may exist in the Delaware Section from 3390'-7254'. No H₂S is anticipated.

POINT 8: OTHER PERTINENT INFORMATION**A) Auxiliary Equipment**

Upper and lower kelly cocks. Full opening stab in valve on the rig floor.

B) Anticipated Starting Date

Upon approval

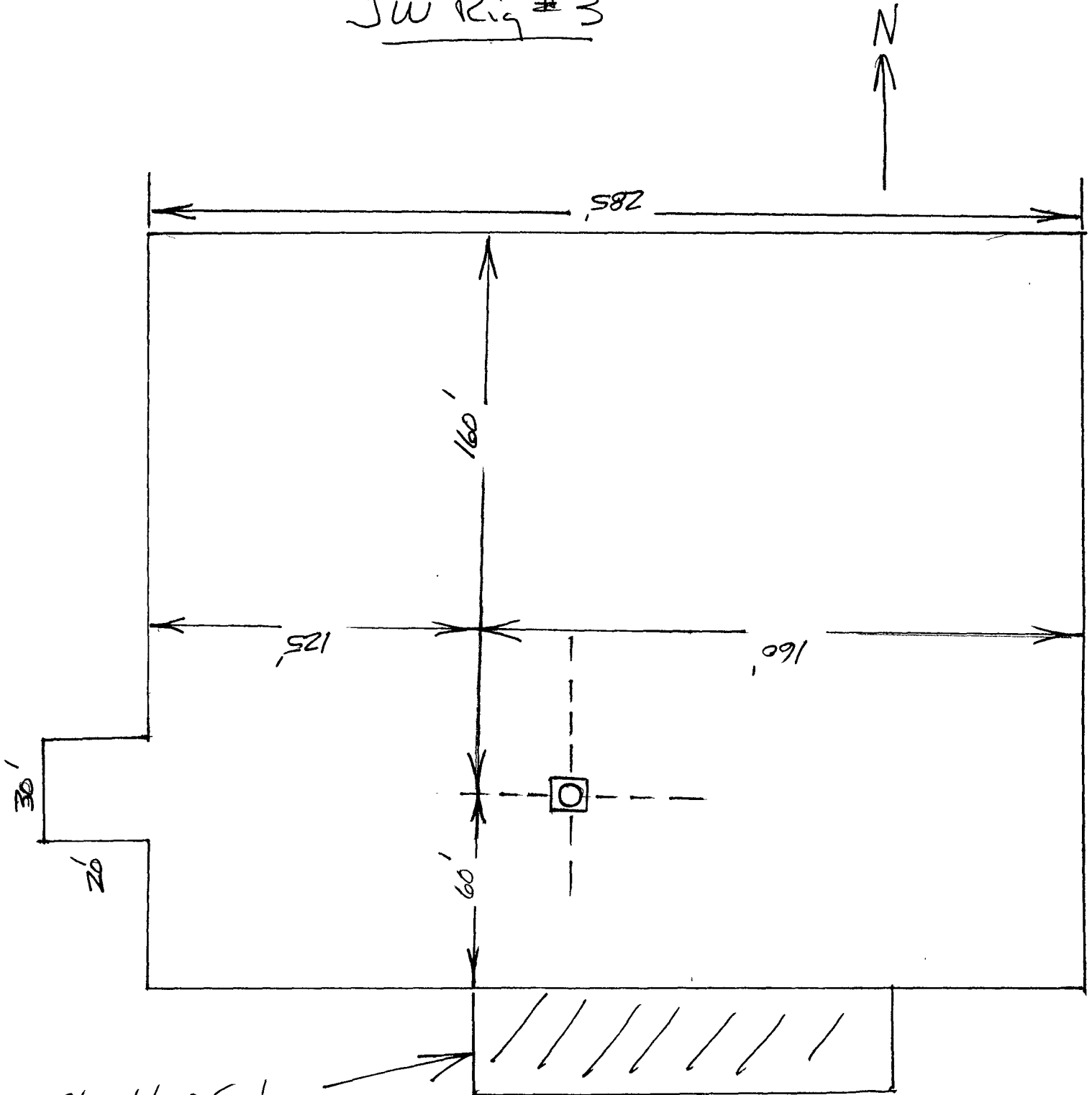
14 days drilling operations

16 days completion operations

GEG/mac
October 8, 2008

SEE ATTACHED FOR
CONDITIONS OF APPROVAL

JW Rig # 3



Closed Loop System
w/ Haul off bins will be
located in this general
area.

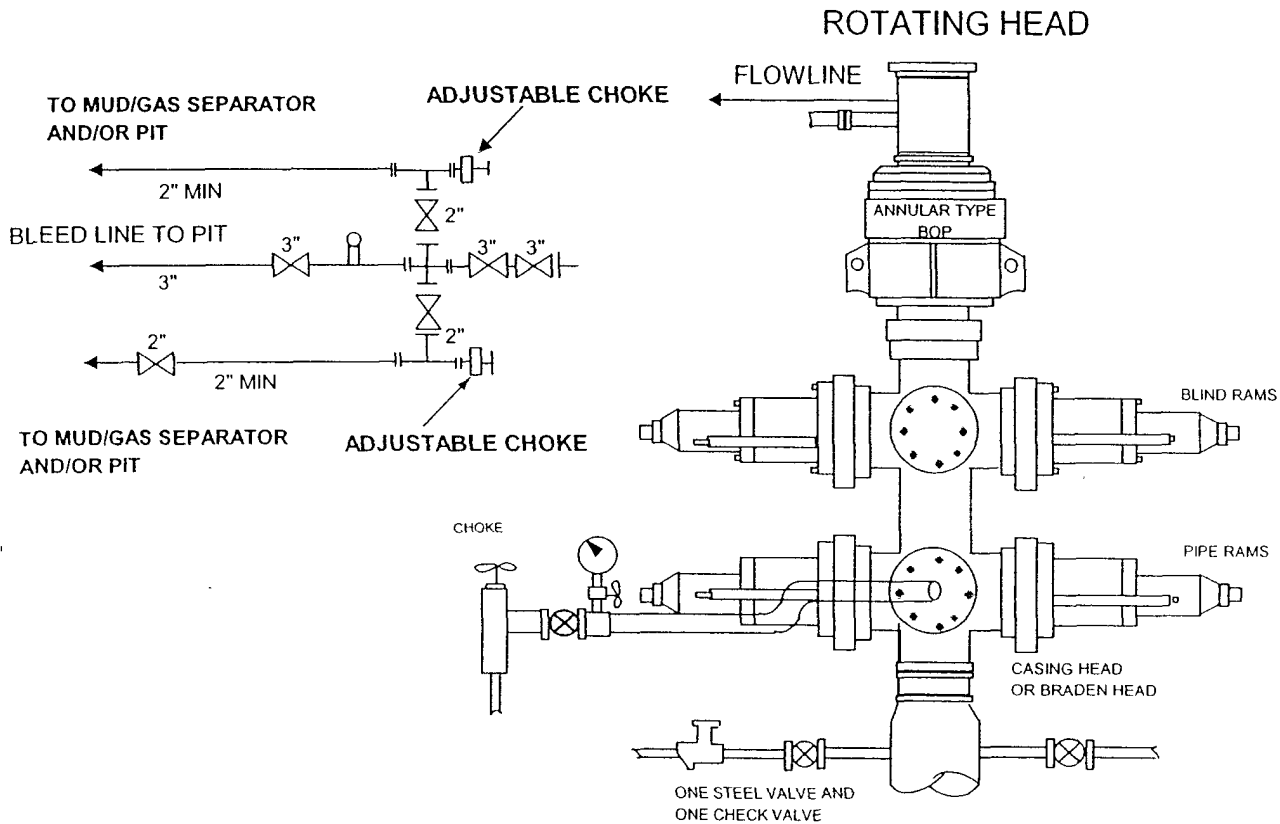
Closed Loop System
No Reserve Pits

Exhibit "C"

BEPCO, L. P.

3-M WP BOPE WITH 3-M WP ANNULAR

3 M CHOKE MANIFOLD EQUIPMENT-CONFIGURATION MAY VARY



THE FOLLOWING CONSTITUTE MINIMUM BLOWOUT PREVENTER REQUIREMENTS

- A. One double gate Blowout preventer with lower pipe rams and upper blind rams, all hydraulically controlled.
- B. Opening on preventers between rams to be flanged, studded or clamped and at least two inches in diameter.
- C. All connections from operating manifold to preventers to be all steel hose or tube a minimum of one inch in diameter.
- D. The available closing pressure shall be at least 15% in excess of that required with sufficient volume to operate (close, open, and re-close) the preventers.
- E. All connections to and from preventers to have a pressure rating equivalent to that of the BOPs.
- F. Manual controls to be installed before drilling cement plug.
- G. Valve to control flow through drill pipe to be located on rig floor.
- H. Chokes must be adjustable. Choke spool may be used between rams.

MULTI-POINT SURFACE USE PLAN

NAME OF WELL: Brushy Draw 6 Federal #1

LEGAL DESCRIPTION - SURFACE: 2225' FNL, 700' FWL, of Section 6, T-⁵⁶25-S, R-30-E, Eddy County, NM.

POINT 1: EXISTING ROADS

A) Proposed Well Site Location:

See Exhibit A and Survey Plats

B) Existing Roads:

See Survey Plats.

C) Existing Road Maintenance or Improvement Plan:

See Exhibit "B" - the old lease road will have to be improved from the El Paso road to location (Approximately 1/2 mile).

POINT 2: NEW PLANNED ACCESS ROUTE

A) Route Location:

From mile marker 4 on Pecos Hwy, go 0.1 miles south to Co. Rd. 725, on Co Rd 725 go 7.4 miles to a "Y" stay on Co Rd 725 and go 8.9 miles to Co. Rd. 725A (Tarbush), on Tarbush go 2.3 miles to El Paso Road, On El Paso Road go east 1.4 miles to an old lease road, go north 0.6 miles to proposed location.

B) Width

15'

C) Maximum Grade

Grade to match existing topography or as per BLM requirements.

D) Turnout Ditches

Spaced per BLM requirements.

E) Culverts, Cattle Guards, and Surfacing Equipment

If required, culverts and cattle guards will be set per BLM Specs.

POINT 3: LOCATION OF EXISTING WELLS

Exhibit A indicates existing wells within the surrounding area.

POINT 4: LOCATION OF EXISTING OR PROPOSED FACILITIES

Page 2

- A) No existing facilities are located within one mile which are owned or controlled by lessee/operator:

Closest Oil/Gas production facilities are located at Poker Lake Unit #227 wellsite. Poker Lake Unit #227 is located approximately 5 miles northwest of proposed well.

- B) New Facilities in the Event of Production:

New production facilities will be built at Brushy Draw 6 Federal #1 wellpad. A separator/treater along with 2-7/8" flowlines will be located on the wellpad. A 2-7/8" gas line will follow existing roads which have been arch cleared. Initially a gas engine will be used to power pumping unit.

- C) Rehabilitation of Disturbed Areas Unnecessary for Production:

Following flowline construction, those access areas required for continued production will be graded to provide drainage and minimize erosion. The areas unnecessary for use will be graded to blend in with the surrounding topography (see Point 10)

POINT 5: LOCATION AND TYPE OF WATER SUPPLY

- A) Location and Type of Water Supply

Fresh water will be hauled from Johnson Station 50 miles east of Carlsbad, New Mexico or other commercial facilities. Brine water will be hauled from commercial facilities.

- B) Water Transportation System

Water hauling to the location will be over the existing and proposed roads.

POINT 6: SOURCE OF CONSTRUCTION MATERIALS

- A) Materials

Onsite caliche pit will be used.

- B) Land Ownership

Federally Owned.

- C) Materials Foreign to the Site

If onsite caliche is not sufficient, we will haul caliche from a BLM approved site.

- D) Access Roads

See Exhibit B.

POINT 7: METHODS FOR HANDLING WASTE MATERIAL

Page 3

A) Cuttings

Cuttings will be contained in steel pits and hauled to CRI for disposal.

B) Drilling Fluids

Drilling fluids will be contained in steel pits, frac tanks, or will be disposed of at licensed disposal facilities.

C) Produced Fluids

Water production will be contained in the steel pits.

Hydrocarbon fluid or other fluids that may be produced during testing will be retained in test tanks.

D) Sewage

Current laws and regulations pertaining to the disposal of human waste will be complied with.

E) Garbage

Portable containers will be utilized for garbage disposal during the drilling of this well.

F) Cleanup of Well Site

Upon release of the drilling rig, the surface of the drilling pad will be graded to accommodate a completion rig if electric log analysis indicate potential productive zones. Reasonable cleanup will be performed prior to the final restoration of the site.

POINT 8: ANCILLARY FACILITIES

None required.

POINT 9: WELL SITE LAYOUT

A) Rig Orientation and Layout

Exhibit "C" shows the dimensions of the well pad and the location of major rig components. Only minor leveling of the well site will be required. No significant cuts or fills will be necessary.

B) Locations of Closed Loop System and Access Road

See Exhibits "C" & Survey Plats.

C) Lining of the Pits

No reserve pit will be built.

POINT 10: PLANS FOR RESTORATION OF THE SURFACE

A) Reserve Pit Cleanup - Not applicable

The pits will be fenced immediately after construction and shall be maintained until they are backfilled. Previous to backfill operations, any hydrocarbon material on the pits' surfaces shall be removed. The fluids and solids contained in the pits shall be backfilled with soil excavated from the site and soil adjacent to the reserve pits. The restored surface of the pits shall be contoured to prevent impoundment of surface water flow. Water-bars will be constructed as needed to prevent excessive erosion. Topsoil, as available, shall be placed over the restored surface in a uniform layer. The area will be seeded according to the Bureau of Land Management stipulations during the appropriate season following restoration.

B) Restoration Plans - Production Developed

No reserve pits will be backfilled dug on this location. In addition, those areas not required for production will be graded to blend with the surrounding topography. Topsoil, as available, will be placed upon those areas and seeded. The portion of the site required for production will be graded to minimize erosion and provide access during inclement conditions. Following depletion and abandonment of the site, restoration procedures will be those that follow under Item C.

C) Restoration Plans - No Production Developed

With no production developed, the entire surface disturbed by construction of the well site will be restored. The site will be contoured to blend with the surrounding topography and provide drainage of surface water. The topsoil, as available, shall be replaced in a uniform layer and seeded according to the Bureau of Land Management's stipulations.

D) Rehabilitation's Timetable

Upon completion of drilling operations, the initial cleanup of the site will be performed as soon as weather and site conditions allow economic execution of the work.

POINT 11: OTHER INFORMATION

Page 5

A) Terrain

Relatively flat.

B) Soil

Caliche and sand.

C) Vegetation

Sparse, primarily grasses and mesquite with very little grass.

D) Surface Use

Primarily grazing.

E) Surface Water

There are no ponds, lakes, streams or rivers within several miles of the wellsite.

F) Water Wells

There are two water wells in Sec 5, T26S, R30E approximately 1-1/2 to 2 miles southeast of Brushy Draw 6 Federal #1.

G) Residences and Buildings

None in the immediate vicinity.

H) Historical Sites

None observed.

I) Archeological Resources

An archeological survey will be obtained for this area. Before any construction begins, a full and complete archeological survey will be submitted to the Bureau of Land Management. Any location or construction conflicts will be resolved before construction begins.

J) Surface Ownership

The well site is on federally owned land.

K) Well signs will be posted at the drilling site.

L) Open Pits

All pits containing liquid or mud will be fenced and bird-netted.

POINT 12: OPERATOR'S FIELD REPRESENTATIVE

Page 6

(Field personnel responsible for compliance with development plan for surface use).

DRILLING

William R. Dannels
Box 2760
Midland, Texas 79702
(432) 683-2277

PRODUCTION

Dean Clemmer
3104 East Green Street
Carlsbad, New Mexico 88220
(505) 887-7329

Kent Adams
Box 2760
Midland, Texas 79702
(432) 683-2277

10/8/08

Date

Gary E. Gerhard
Gary E. Gerhard

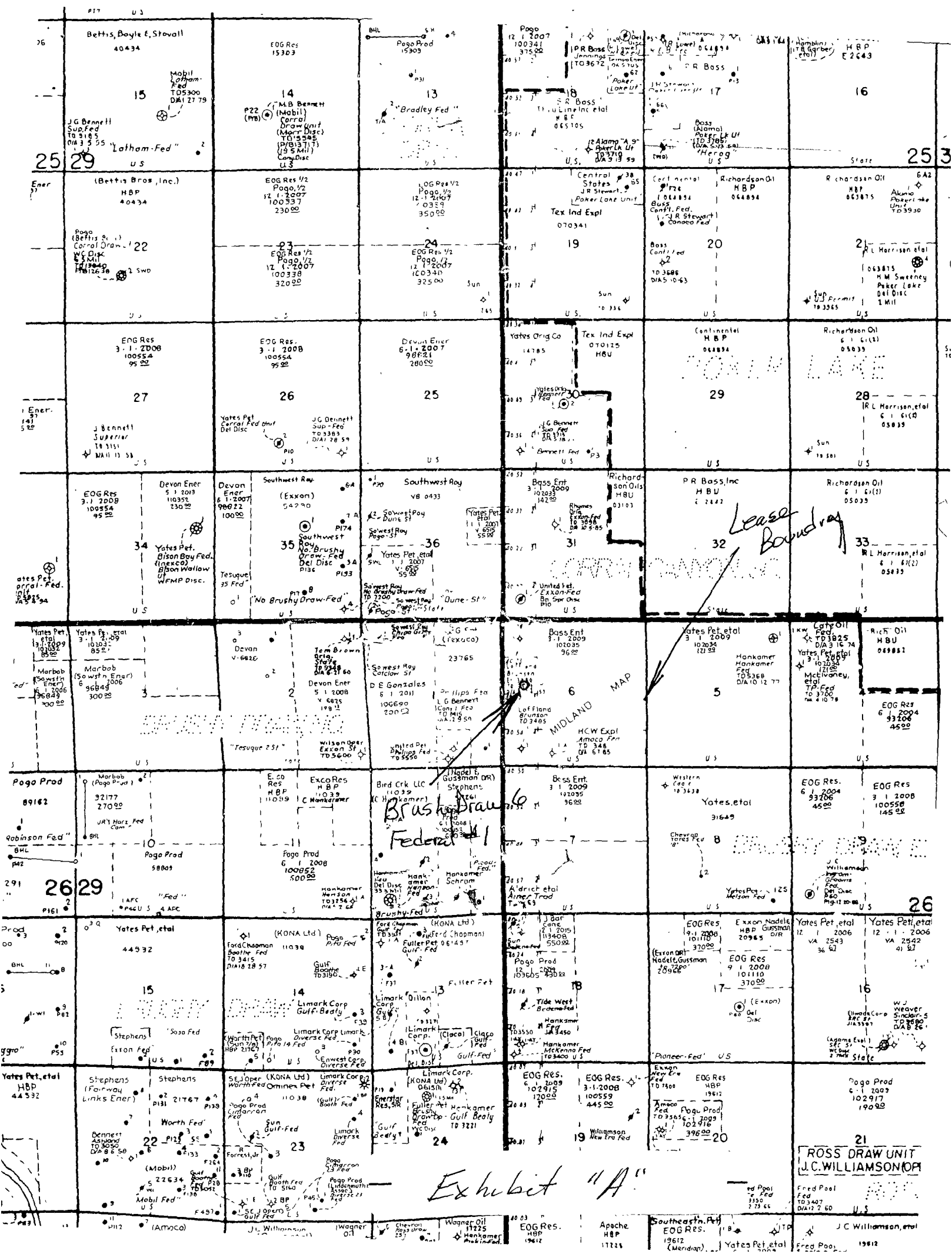
GEG/mac

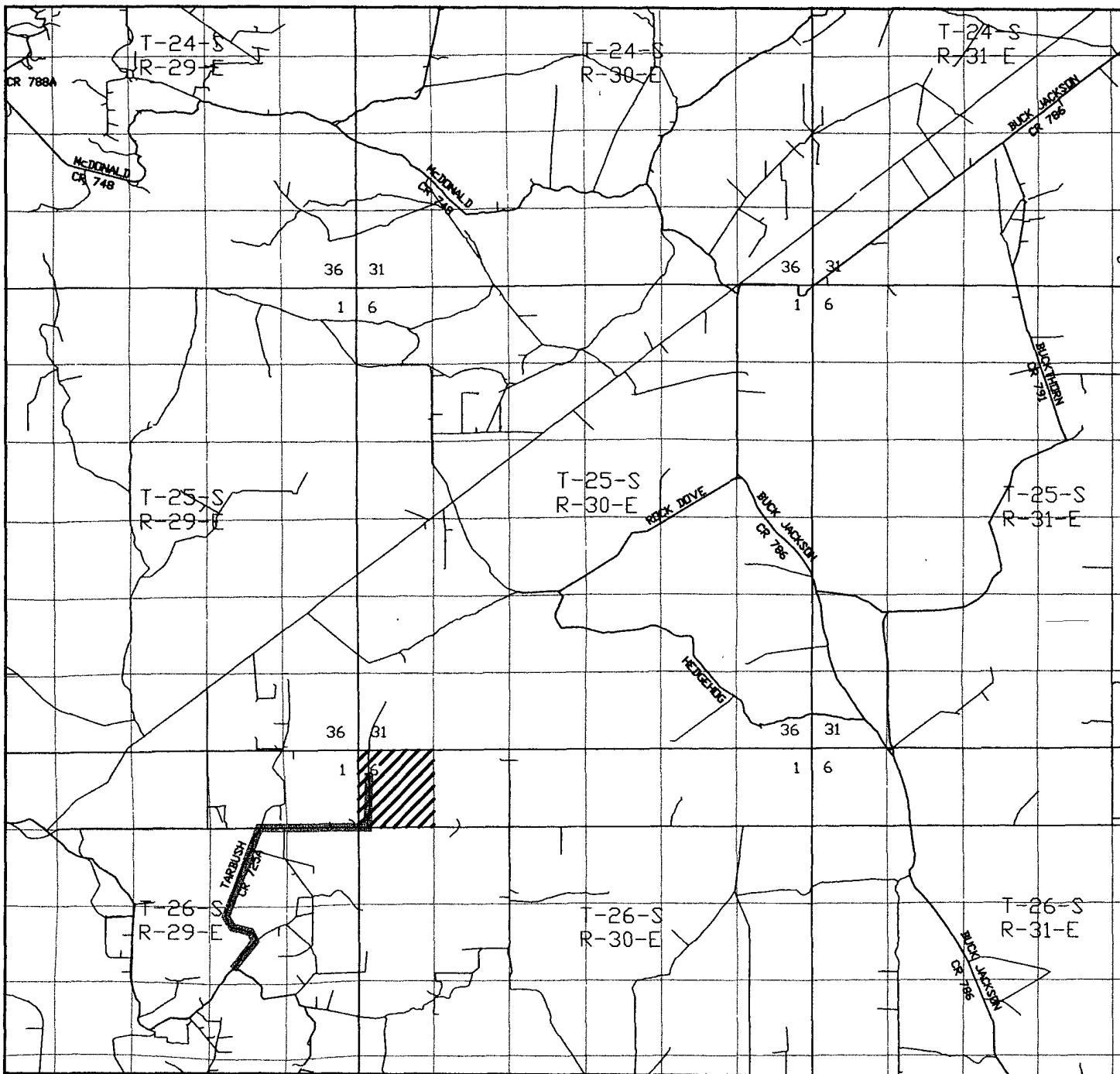
OPERATOR CERTIFICATION

I hereby certify that I, or persons under my direct supervision have inspected the proposed drill site and access route; that I am familiar with the conditions which currently exist; that the statements made in the plan are, to the best of my knowledge, true and correct; and that the work associated with operations proposed herein will be performed by BEPCO, L.P. and it's contractors and subcontractors in conformity with this plan and the terms and conditions under which it is approved. This statement is subject to the provisions of 18 U.S.C. 1001 for the filing of a false statement.

10/0/08
Date

Gary E. Gerhard
Gary E. Gerhard





BRUSHY DRAW "6" FEDERAL #1
 2225' FNL and 700' FWL
 Section 6, Township 26 South, Range 30 East,
 N.M.P.M., Eddy County, New Mexico.

basin
surveys
 focused on excellence
 in the oilfield

P.O. Box 1786
 1120 N. West County Rd.
 Hobbs, New Mexico 88241
 (575) 393-7316 - Office
 (575) 392-2206 - Fax
 basinsurveys.com

W.O. Number: JMS 20589

Survey Date: 09-24-2008

Scale: 1" = 2 MILES

Date: 10-01-2008

BEPCO, L.P.

Exhibit "B"

PECOS DISTRICT CONDITIONS OF APPROVAL

OPERATOR'S NAME:	BEPCO
LEASE NO.:	NMNM102035
WELL NAME & NO.:	BRUSHY DRAW 6 FEDERAL 1
SURFACE HOLE FOOTAGE:	2225' FNL & 700' FWL
BOTTOM HOLE FOOTAGE	
LOCATION:	Section 6, T. 26 S., R 30 E., NMPM
COUNTY:	Eddy County, New Mexico

TABLE OF CONTENTS

Standard Conditions of Approval (COA) apply to this APD. If any deviations to these standards exist or special COAs are required, the section with the deviation or requirement will be checked below.

- ☐ **General Provisions**
- ☐ **Permit Expiration**
- ☐ **Archaeology, Paleontology, and Historical Sites**
- ☐ **Noxious Weeds**
- ☐ **Special Requirements**
- ☒ **Construction**
 - V-Door change**
 - Notification
 - Topsoil
 - Reserve Pit
 - Federal Mineral Material Pits
 - Well Pads
 - Roads
- ☐ **Road Section Diagram**
- ☒ **Drilling**
- ☐ **Production (Post Drilling)**
 - Well Structures & Facilities
 - Pipeline
- ☐ **Interim Reclamation**
- ☐ **Final Abandonment/Reclamation**

I. GENERAL PROVISIONS

The approval of the Application For Permit To Drill (APD) is in compliance with all applicable laws and regulations: 43 Code of Federal Regulations 3160, the lease terms, Onshore Oil and Gas Orders, Notices To Lessees, New Mexico Oil Conservation Division (NMOCD) Rules, National Historical Preservation Act As Amended, and instructions and orders of the Authorized Officer. Any request for a variance shall be submitted to the Authorized Officer on Form 3160-5, Sundry Notices and Report on Wells.

II. PERMIT EXPIRATION

If the permit terminates prior to drilling and drilling cannot be commenced within 60 days after expiration, an operator is required to submit Form 3160-5, Sundry Notices and Reports on Wells, requesting surface reclamation requirements for any surface disturbance. However, if the operator will be able to initiate drilling within 60 days after the expiration of the permit, the operator must have set the conductor pipe in order to allow for an extension of 60 days beyond the expiration date of the APD. (Filing of a Sundry Notice is required for this 60 day extension.)

III. ARCHAEOLOGICAL, PALEONTOLOGY & HISTORICAL SITES

Any cultural and/or paleontological resource discovered by the operator or by any person working on the operator's behalf shall immediately report such findings to the Authorized Officer. The operator is fully accountable for the actions of their contractors and subcontractors. The operator shall suspend all operations in the immediate area of such discovery until written authorization to proceed is issued by the Authorized Officer. An evaluation of the discovery shall be made by the Authorized Officer to determine the appropriate actions that shall be required to prevent the loss of significant cultural or scientific values of the discovery. The operator shall be held responsible for the cost of the proper mitigation measures that the Authorized Officer assesses after consultation with the operator on the evaluation and decisions of the discovery. Any unauthorized collection or disturbance of cultural or paleontological resources may result in a shutdown order by the Authorized Officer.

IV. NOXIOUS WEEDS

The operator shall be held responsible if noxious weeds become established within the areas of operations. Weed control shall be required on the disturbed land where noxious weeds exist, which includes the roads, pads, associated pipeline corridor, and adjacent land affected by the establishment of weeds due to this action. The operator shall consult with the Authorized Officer for acceptable weed control methods, which include following EPA and BLM requirements and policies.

V. CONSTRUCTION

V-DOOR EAST.

A. NOTIFICATION

The BLM shall administer compliance and monitor construction of the access road and well pad. Notify the Carlsbad Field Office at (505) 234-5972 at least 3 working days prior to commencing construction of the access road and/or well pad.

When construction operations are being conducted on this well, the operator shall have the approved APD and Conditions of Approval (COA) on the well site and they shall be made available upon request by the Authorized Officer.

B. TOPSOIL

The operator shall stockpile the topsoil of the well pad. The topsoil to be stripped is approximately 8 inches in depth. The topsoil shall not be used to backfill the reserve pit and will be used for interim and final reclamation.

C. RESERVE PITS

Tanks are required for drilling operations: No Pits.

The operator shall properly dispose of drilling contents at an authorized disposal site.

D. FEDERAL MINERAL MATERIALS PIT

If the operator elects to surface the access road and/or well pad, mineral materials extracted during construction of the reserve pit may be used for surfacing the well pad and access road and other facilities on the lease.

Payment shall be made to the BLM prior to removal of any additional federal mineral materials from any site other than the reserve pit. Call the Carlsbad Field Office at (505) 234-5972.

E. WELL PAD SURFACING

Surfacing of the well pad is not required.

If the operator elects to surface the well pad, the surfacing material may be required to be removed at the time of reclamation.

The well pad shall be constructed in a manner which creates the smallest possible surface disturbance, consistent with safety and operational needs.

F. ON LEASE ACCESS ROADS

Road Width

The access road shall have a driving surface that creates the smallest possible surface disturbance and does not exceed fourteen (14) feet in width. The maximum width of surface disturbance, when constructing the access road, shall not exceed thirty (30) feet.

Surfacing

Surfacing material is not required on the new access road driving surface. If the operator elects to surface the new access road or pad, the surfacing material may be required to be removed at the time of reclamation.

Where possible, no improvements should be made on the unsurfaced access road other than to remove vegetation as necessary, road irregularities, safety issues, or to fill low areas that may sustain standing water.

The Authorized Officer reserves the right to require surfacing of any portion of the access road at any time deemed necessary. Surfacing may be required in the event the road deteriorates, erodes, road traffic increases, or it is determined to be beneficial for future field development. The surfacing depth and type of material will be determined at the time of notification.

Crowning

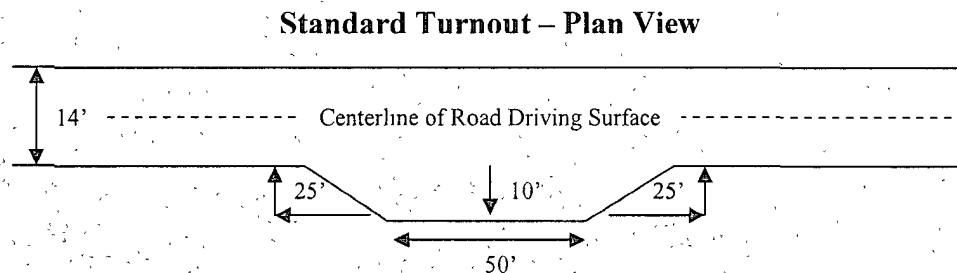
Crowning shall be done on the access road driving surface. The road crown shall have a grade of approximately 2% (i.e., a 1" crown on a 14' wide road). The road shall conform to Figure 1; cross section and plans for typical road construction.

Ditching

Ditching shall be required on both sides of the road.

Turnouts

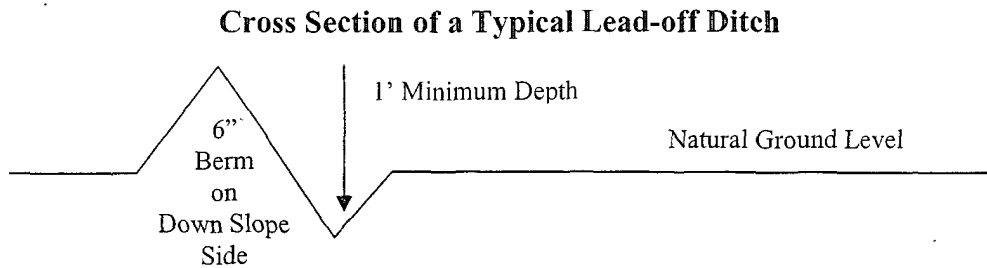
Vehicle turnouts shall be constructed on the road. Turnouts shall be intervisible with interval spacing distance less than 1000 feet. Turnouts shall be constructed on all blind curves. Turnouts shall conform to the following diagram:



Drainage

Drainage control systems shall be constructed on the entire length of road (e.g. ditches, sidehill outslowing and inslaping, lead-off ditches, culvert installation, and low water crossings).

A typical lead-off ditch has a minimum depth of 1 foot below and a berm of 6 inches above natural ground level. The berm shall be on the down-slope side of the lead-off ditch.



All lead-off ditches shall be graded to drain water with a 1 percent minimum to 3 percent maximum ditch slope. The spacing interval are variable for lead-off ditches and shall be determined according to the formula for spacing intervals of lead-off ditches, but may be amended depending upon existing soil types and centerline road slope (in %);

Formula for Spacing Interval of Lead-off Ditches

Example - On a 4% road slope that is 400 feet long, the water flow shall drain water into a lead-off ditch. Spacing interval shall be determined by the following formula:

$$400 \text{ foot road with } 4\% \text{ road slope: } \frac{400'}{4\%} + 100' = 200' \text{ lead-off ditch interval}$$

Culvert Installations

Appropriately sized culvert(s) shall be installed at the deep waterway channel flow crossing.

Cattleguards

An appropriately sized cattleguard(s) sufficient to carry out the project shall be installed and maintained at fence crossing(s).

Any existing cattleguard(s) on the access road shall be repaired or replaced if they are damaged or have deteriorated beyond practical use. The operator shall be responsible for the condition of the existing cattleguard(s) that are in place and are utilized during lease operations.

A gate shall be constructed and fastened securely to H-braces.

Fence Requirement

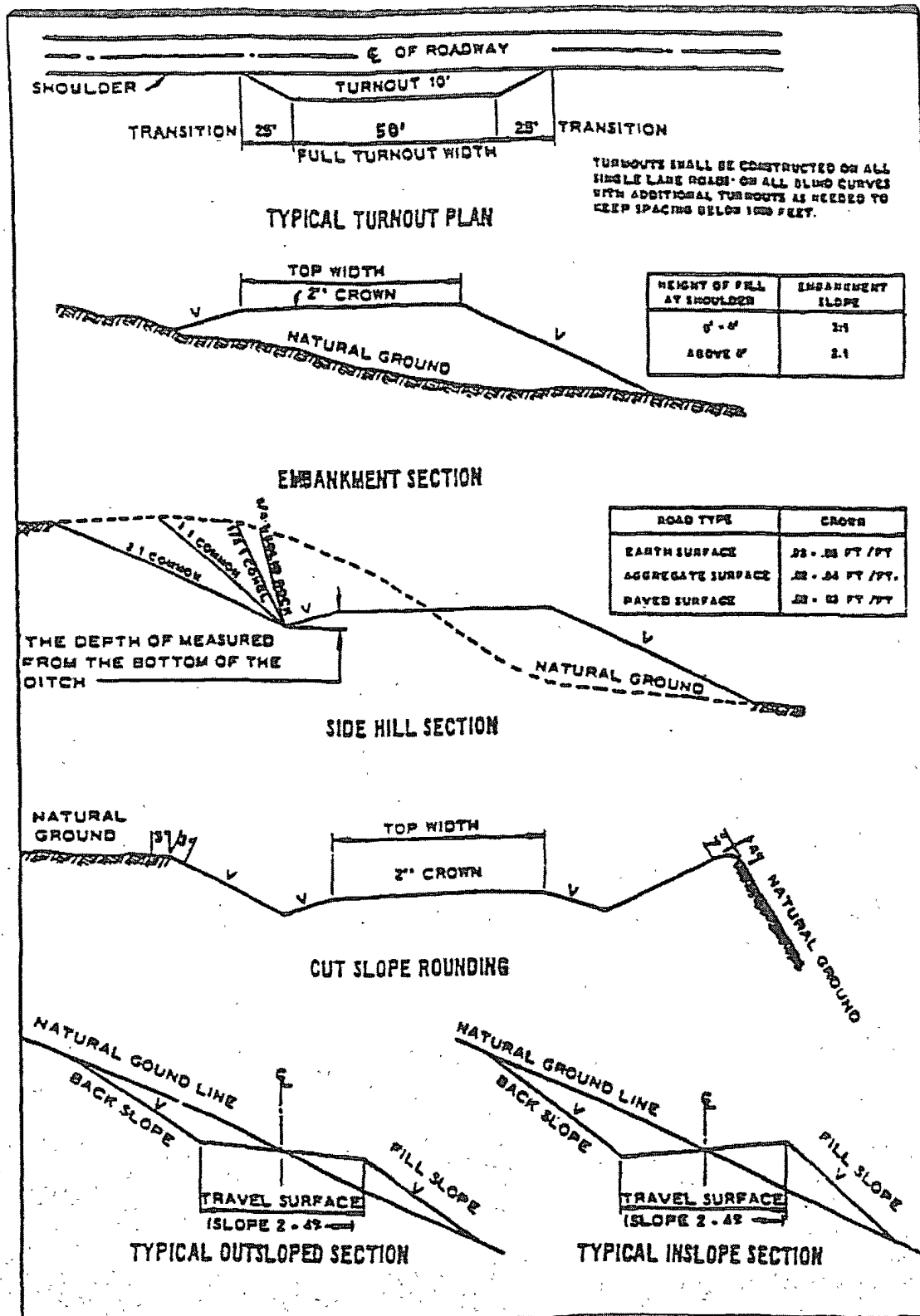
Where entry is required across a fence line, the fence shall be braced and tied off on both sides of the passageway prior to cutting.

The operator shall notify the private surface landowner or the grazing allotment holder prior to crossing any fence(s).

Public Access

Public access on this road shall not be restricted by the operator without specific written approval granted by the Authorized Officer.

Figure 1 – Cross Sections and Plans For Typical Road Sections



VI. DRILLING

A. DRILLING OPERATIONS REQUIREMENTS

The BLM is to be notified a minimum of 4 hours in advance for a representative to witness:

- a. Spudding well
- b. Setting and/or Cementing of all casing strings
- c. BOPE tests

☒ **Eddy County**

Call the Carlsbad Field Office, 620 East Greene St., Carlsbad, NM 88220,
(575) 361-2822

1. **Although Hydrogen Sulfide has not been reported in this section, it is always a potential hazard. If Hydrogen Sulfide is encountered, please report measured amounts and formations to the BLM.**
2. Unless the production casing has been run and cemented or the well has been properly plugged, the drilling rig shall not be removed from over the hole without prior approval.
3. Floor controls are required for 3M or Greater systems. These controls will be on the rig floor, unobstructed, readily accessible to the driller and will be operational at all times during drilling and/or completion activities. Rig floor is defined as the area immediately around the rotary table; the area immediately above the substructure on which the draw works are located, this does not include the dog house or stairway area.

B. CASING

Changes to the approved APD casing and cement program require submitting a sundry and receiving approval prior to work. Failure to obtain approval prior to work will result in an Incident of Non-Compliance being issued.

Centralizers required on surface casing per Onshore Order 2.III.B.1.f.

Wait on cement (WOC) time for a primary cement job will be a minimum 18 hours for a water basin; 24 hours in the potash area, or 500 pounds compressive strength, whichever is greater for all casing strings. Provide compressive strengths including hours to reach required 500 pounds compressive strength prior to cementing each casing string. See individual casing strings for details regarding lead cement slurry requirements.

No pea gravel permitted for remedial or fall back remedial without prior authorization from the BLM engineer.

Medium cave/karst.

Possible Rustler debris flow.

Possible lost circulation in the Delaware and Bone Spring formations.

1. The 8-5/8 inch surface casing shall be set **between 840-900 feet (a minimum of 25 feet into the Rustler Anhydrite and above the salt)** and cemented to the surface. **Rustler Anhydrite could be encountered deeper than setting point noted above – if so, set casing 25 feet into Rustler Anhydrite. Fresh water to be used to setting depth.**
 - a. If cement does not circulate to the surface, the appropriate BLM office shall be notified and a temperature survey utilizing an electronic type temperature survey with a surface log readout will be used or a cement bond log shall be run to verify the top of the cement.
 - b. **Wait on cement (WOC) time for a primary cement job is to include the lead cement slurry.**
 - c. Wait on cement (WOC) time for a remedial job will be a minimum of 4 hours after bringing cement to surface or 500 pounds compressive strength, whichever is greater.
 - d. If cement falls back, remedial cementing will be done prior to drilling out that string.
2. The minimum required fill of cement behind the 5-1/2 inch production casing is:
 - a. First stage to DV tool, cement shall:
 - ☒ Cement to circulate. If cement does not circulate, contact the appropriate BLM office, before proceeding with second stage cement job.
 - b. Second stage above DV tool, cement shall:
 - ☒ Cement to surface. If cement does not circulate, contact the appropriate BLM office. **Additional cement will be required as excess calculates to negative 10%.**
3. If hardband drill pipe is rotated inside casing, returns will be monitored for metal. If metal is found in samples, drill pipe will be pulled and rubber protectors which have a larger diameter than the tool joints of the drill pipe will be installed prior to continuing drilling operations.

C. PRESSURE CONTROL

1. All blowout preventer (BOP) and related equipment (BOPE) shall comply with well control requirements as described in Onshore Oil and Gas Order No. 2 and API RP 53 Sec. 17.
2. Minimum working pressure of the blowout preventer (BOP) and related equipment (BOPE) required for drilling below the surface casing shoe shall be **3000 (3M)** psi.
3. The appropriate BLM office shall be notified a minimum of 4 hours in advance for a representative to witness the tests.
 - a. The tests shall be done by an independent service company.
 - b. The results of the test shall be reported to the appropriate BLM office.
 - c. All tests are required to be recorded on a calibrated test chart. A copy of the BOP/BOPE test chart and a copy of independent service company test will be submitted to the appropriate BLM office.
 - d. The BOP/BOPE test shall include a low pressure test from 250 to 300 psi. The test will be held for a minimum of 10 minutes if test is done with a test plug and 30 minutes without a test plug.

D. DRILL STEM TEST

If drill stem tests are performed, Onshore Order 2.III.D shall be followed.

WWI 111108

VII. PRODUCTION (POST DRILLING)

A. WELL STRUCTURES & FACILITIES

Placement of Production Facilities

Production facilities should be placed on the well pad to allow for maximum interim recontouring and revegetation of the well location.

Containment Structures

The containment structure shall be constructed to hold the capacity of the entire contents of the largest tank, plus 24 hour production, unless more stringent protective requirements are deemed necessary by the Authorized Officer.

Painting Requirement

All above-ground structures including meter housing that are not subject to safety requirements shall be painted a flat non-reflective paint color
Shale Green, Munsell Soil Color Chart # 5Y 4/2

B. PIPELINE

STANDARD STIPULATIONS FOR SURFACE INSTALLED PIPELINES

A copy of the APD and attachments, including stipulations, survey plat and/or map, will be on location during construction. BLM personnel may request to you a copy of your permit during construction to ensure compliance with all stipulations.

Holder agrees to comply with the following stipulations to the satisfaction of the Authorized Officer:

1. The holder shall indemnify the United States against any liability for damage to life or property arising from the occupancy or use of public lands under this grant.
2. The holder shall comply with all applicable Federal laws and regulations existing or hereafter enacted or promulgated. In any event, the holder shall comply with the Toxic Substances Control Act of 1976 as amended, 15 USC 2601 et seq. (1982) with regards to any toxic substances that are used, generated by or stored on the right-of-way or on facilities authorized under this right-of-way grant. (See 40 CFR, Part 702-799 and especially, provisions on polychlorinated biphenyls, 40 CFR 761.1-761.193.) Additionally, any release of toxic substances (leaks, spills, etc.) in excess of the reportable quantity established by 40 CFR, Part 117 shall be reported as required by the Comprehensive Environmental Response, Compensation, and Liability Act, section 102b. A copy of any report required or requested by any Federal agency or State government as a result of a reportable release or spill of any toxic substances shall be furnished to the authorized officer concurrent with the filing of the reports to the involved Federal agency or State government.

3. The holder agrees to indemnify the United States against any liability arising from the release of any hazardous substance or hazardous waste (as these terms are defined in the Comprehensive Environmental Response, Compensation and Liability Act of 1980, 42 U.S.C. 9601, et seq. or the Resource Conservation and Recovery Act, 42 U.S.C. 6901, et seq.) on the Right-of-Way (unless the release or threatened release is wholly unrelated to activity of the Right-of-Way holder's activity on the Right-of-Way), or resulting from the activity of the Right-of-Way holder on the Right-of-Way. This agreement applies without regard to whether a release is caused by the holder, its agent, or unrelated third parties.

4. The holder shall be liable for damage or injury to the United States to the extent provided by 43 CFR Sec. 2883.1-4. The holder shall be held to a standard of strict liability for damage or injury to the United States resulting from pipe rupture, fire, or spills caused or substantially aggravated by any of the following within the right-of-way or permit area:

- a. Activities of the holder including, but not limited to construction, operation, maintenance, and termination of the facility.
- b. Activities of other parties including, but not limited to:
 - (1) Land clearing.
 - (2) Earth-disturbing and earth-moving work.
 - (3) Blasting.
 - (4) Vandalism and sabotage.
- c. Acts of God.

The maximum limitation for such strict liability damages shall not exceed one million dollars (\$1,000,000) for any one event, and any liability in excess of such amount shall be determined by the ordinary rules of negligence of the jurisdiction in which the damage or injury occurred.

This section shall not impose strict liability for damage or injury resulting primarily from an act of war or from the negligent acts or omissions of the United States.

5. If, during any phase of the construction, operation, maintenance, or termination of the pipeline, any oil, salt water, or other pollutant should be discharged from the pipeline system, impacting Federal lands, the control and total removal, disposal, and cleaning up of such oil, salt water, or other pollutant, wherever found, shall be the responsibility of the holder, regardless of fault. Upon failure of the holder to control, dispose of, or clean up such discharge on or affecting Federal lands, or to repair all damages resulting therefrom, on the Federal lands, the Authorized Officer may take such measures as he deems necessary to control and clean up the discharge and restore the area, including, where appropriate, the aquatic environment and fish and wildlife habitats, at the full

expense of the holder. Such action by the Authorized Officer shall not relieve the holder of any responsibility as provided herein.

6. All construction and maintenance activity will be confined to the authorized right-of-way width of 25 feet.

7. No blading or clearing of any vegetation will be allowed unless approved in writing by the Authorized Officer.

8. The holder shall install the pipeline on the surface in such a manner that will minimize suspension of the pipeline across low areas in the terrain. In hummocky or dune areas, the pipeline will be "snaked" around hummocks and dunes rather than suspended across these features.

9. The pipeline shall be buried with a minimum of 24 inches under all roads, "two-tracks," and trails. Burial of the pipe will continue for 20 feet on each side of each crossing. The condition of the road, upon completion of construction, shall be returned to at least its former state with no bumps or dips remaining in the road surface.

10. The holder shall minimize disturbance to existing fences and other improvements on public lands. The holder is required to promptly repair improvements to at least their former state. Functional use of these improvements will be maintained at all times. The holder will contact the owner of any improvements prior to disturbing them. When necessary to pass through a fence line, the fence shall be braced on both sides of the passageway prior to cutting of the fence. No permanent gates will be allowed unless approved by the Authorized Officer.

11. In those areas where erosion control structures are required to stabilize soil conditions, the holder will install such structures as are suitable for the specific soil conditions being encountered and which are in accordance with sound resource management practices.

12. Excluding the pipe, all above-ground structures not subject to safety requirement shall be painted by the holder to blend with the natural color of the landscape. The paint used shall be a color which simulates "Standard Environmental Colors" – **Shale Green**, Munsell Soil Color No. 5Y 4/2; designated by the Rocky Mountain Five State Interagency Committee.

13. The pipeline will be identified by signs at the point of origin and completion of the right-of-way and at all road crossings. At a minimum, signs will state the holder's name, BLM serial number, and the product being transported. Signs will be maintained in a legible condition for the life of the pipeline.

14. The holder shall not use the pipeline route as a road for purposes other than routine maintenance as determined necessary by the Authorized Officer in consultation with the holder. The holder will take whatever steps are necessary to ensure that the pipeline

route is not used as a roadway.

15. Any cultural and/or paleontological resource (historic or prehistoric site or object) discovered by the holder, or any person working on his behalf, on public or Federal land shall be immediately reported to the authorized officer. Holder shall suspend all operations in the immediate area of such discovery until written authorization to proceed is issued by the authorized officer. An evaluation of the discovery will be made by the authorized officer to determine appropriate cultural or scientific values. The holder will be responsible for the cost of evaluation and any decision as to proper mitigation measures will be made by the authorized officer after consulting with the holder.

VIII. INTERIM RECLAMATION & RESERVE PIT CLOSURE

A. INTERIM RECLAMATION

If the well is a producer, interim reclamation shall be conducted on the well site in accordance with the orders of the Authorized Officer. The operator shall submit a Sundry Notices and Reports on Wells (Notice of Intent), Form 3160-5, prior to conducting interim reclamation.

During the life of the development, all disturbed areas not needed for active support of production operations should undergo interim reclamation in order to minimize the environmental impacts of development on other resources and uses.

The operators should work with BLM surface management specialists to devise the best strategies to reduce the size of the location. Any reductions should allow for remedial well operations, as well as safe and efficient removal of oil and gas.

During reclamation, the removal of caliche is important to increasing the success of revegetating the site. Removed caliche may be used for road repairs, fire walls or for building other roads and locations. In order to operate the well or complete workover operations, it may be necessary to drive, park and operate on restored interim vegetation within the previously disturbed area. Disturbing revegetated areas for production or workover operations will be allowed. If there is significant disturbance and loss of vegetation, the area will need to be revegetated. Communicate with the appropriate BLM office for any exceptions/exemptions if needed.

Seed Mixture 2, for Sandy Sites

The holder shall seed all disturbed areas with the seed mixture listed below. The seed mixture shall be planted in the amounts specified in pounds of pure live seed (PLS)* per acre. There shall be no primary or secondary noxious weeds in the seed mixture. Seed will be tested and the viability testing of seed will be done in accordance with State law (s) and within nine (9) months prior to purchase. Commercial seed will be either certified or registered seed. The seed container will be tagged in accordance with State law(s) and available for inspection by the authorized officer.

Seed will be planted using a drill equipped with a depth regulator to ensure proper depth of planting where drilling is possible. The seed mixture will be evenly and uniformly planted over the disturbed area (smaller/heavier seeds have a tendency to drop the bottom of the drill and are planted first). The holder shall take appropriate measures to ensure this does not occur. Where drilling is not possible, seed will be broadcast and the area shall be raked or chained to cover the seed. When broadcasting the seed, the pounds per acre are to be doubled. The seeding will be repeated until a satisfactory stand is established as determined by the authorized officer. Evaluation of growth will not be made before completion of at least one full growing season after seeding.

Species to be planted in pounds of pure live seed* per acre:

<u>Species</u>	<u>lb/acre</u>
Sand dropseed (<i>Sporobolus cryptandrus</i>)	1.0
Sand love grass (<i>Eragrostis trichodes</i>)	1.0
Plains bristlegrass (<i>Setaria macrostachya</i>)	2.0

*Pounds of pure live seed:

Pounds of seed x percent purity x percent germination = pounds pure live seed
(Insert Seed Mixture Here)

X. FINAL ABANDONMENT & REHABILITATION REQUIREMENTS

Upon abandonment of the well and/or when the access road is no longer in service the Authorized Officer shall issue instructions and/or orders for surface reclamation and restoration of all disturbed areas.

On private surface/federal mineral estate land the reclamation procedures on the road and well pad shall be accomplished in accordance with the private surface land owner agreement.