

API 30-015-36042

DEC 19 2008

District I
1625 N. French Dr., Hobbs, NM 88240
District II
1301 W. Grand Avenue, Artesia, NM 88210
District III
1000 Rio Brazos Rd., Aztec, NM 87410
District IV
1220 S. St. Francis Dr., Santa Fe, NM 87505

State of New Mexico
Energy, Minerals & Natural Resources Department
OIL CONSERVATION DIVISION
1220 South St. Francis Dr.
Santa Fe, NM 87505

OCD-ARTESIA Form C-102
Revised October 12, 2005
Submit to Appropriate District Office

State Lease- 4 Copies
Fee Lease- 3 Copies

AMENDED REPORT

WELL LOCATION AND ACREAGE DEDICATION PLAT

API Number	Pool Code 96070	Pool Name WC; Morrow (Gas)
Property Code	Property Name HOYT 3 STATE COM	Well Number 1
OGRID No. 7377	Operator Name EOG RESOURCES, INC.	Elevation 3238.0'

Surface Location

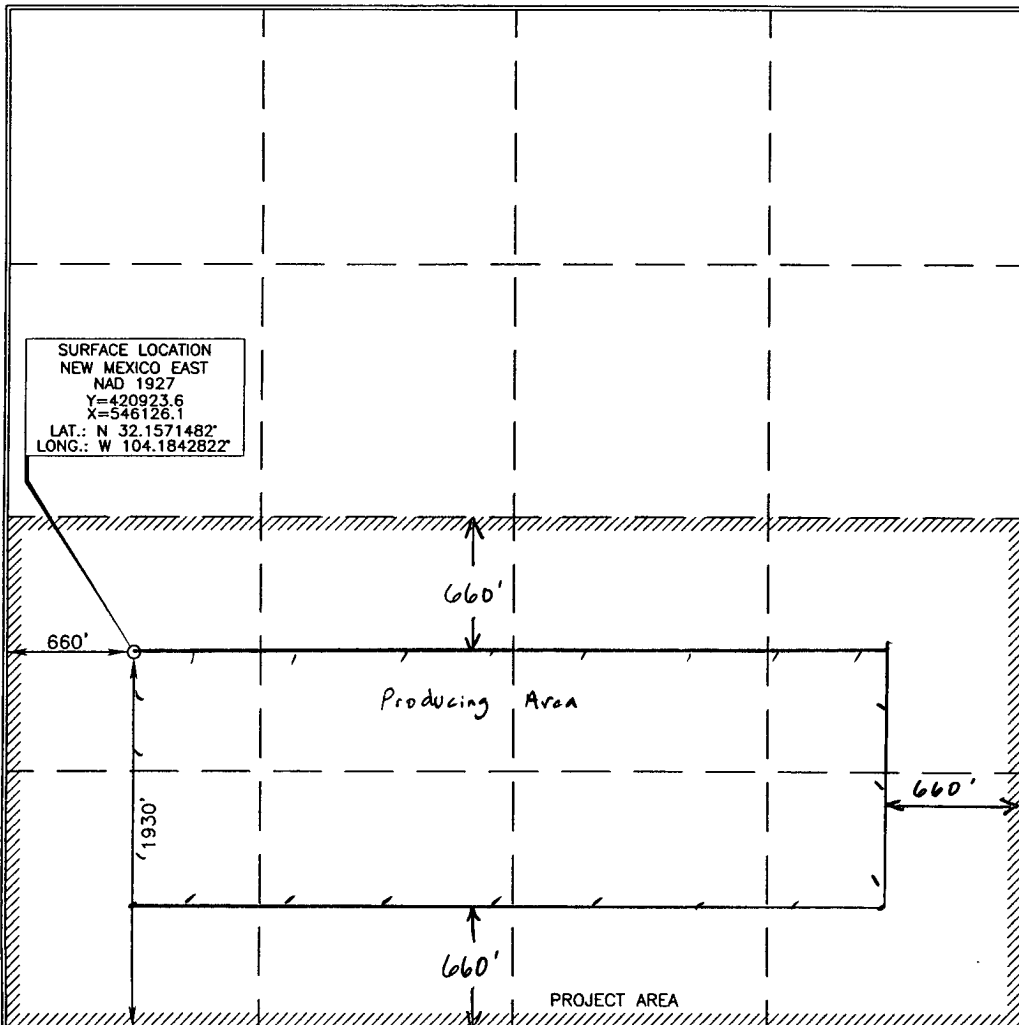
UL or lot no.	Section	Township	Range	Lot Idn	Feet from the	North/South line	Feet from the	East/West line	County
L	3	25 SOUTH	27 EAST, N.M.P.M.		1930	SOUTH	660	WEST	EDDY

Bottom Hole Location If Different From Surface

UL or lot no.	Section	Township	Range	Lot Idn	Feet from the	North/South line	Feet from the	East/West line	County

Dedicated Acres 320	Joint or Infill	Consolidation Code	Order No.
------------------------	-----------------	--------------------	-----------

No allowable will be assigned to this completion until all interests have been consolidated or a non-standard unit has been approved by the division.



OPERATOR CERTIFICATION

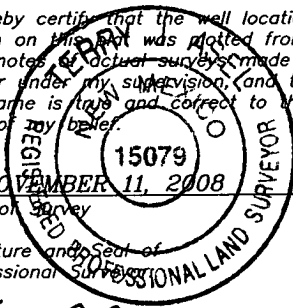
I hereby certify that the information contained herein is true and complete to the best of my knowledge and belief, and that this organization either owns a working interest or unleased mineral interest in the land including the proposed bottom hole location or has a right to drill this well at this location pursuant to a contract with an owner of such a mineral or working interest, or to a voluntary pooling agreement or a compulsory pooling order heretofore entered by the division.

Donny G. Glanton 12-17-08
Signature Date

Donny G. Glanton
Printed Name

SURVEYOR CERTIFICATION

I hereby certify that the well location shown on this plat was plotted from field notes of actual surveys made by me or under my supervision, and that the same is true and correct to the best of my belief.



NOVEMBER 11, 2008
Date of Survey

Signature and Seal of
Professional Surveyor

Terry G. Glanton 12/16/2008
Certificate Number 15079

WO# 081001WL-F(KA)

Permit Information:

Well Name: Hoyt 3 State Com #1

Location:

SL 1930' FSL & 660' FWL, Section 3, T-25-S, R-27-E, Eddy Co., N.M.
 BHL Same

Casing Program:

Casing	Setting Depth	Hole Size	Casing Size	Casing Weight	Casing Grade	Desired TOC
Surface	450'	17-1/2"	13-3/8"	48#	H-40	Surface
1 st Intermediate	2,300'	12-1/4"	9-5/8"	40#	J-55	Surface
2 nd Intermediate	9,500'	8-3/4"	7"	26#	HCP-110	1,900'
Production Liner	12,600'	6-1/8"	4-1/2"	11.6#	HCP-110	9,300' TOL

Cement Program:

Depth	No. Sacks	Slurries:
450'	500	Premium Plus C + 0.005 pps Static Free + 2% CaCl ₂ + 0.25 pps CelloFlake + 0.005 gps FP-6L
2,300'	400	Lead: 50:50 Poz C + 0.005 pps Static Free + 5% NaCl + 0.25 pps CelloFlake + 5 pps LCM-1 + 0.005 gps FP-6L + 10% Bentonite
	200	Tail: Premium Plus C + 0.005 pps Static Free + 2% CaCl ₂ + 0.25 pps CelloFlake + 0.005 gps FP-6L
9,500' <i>Stage 1</i>	175	Lead: 35:65 Poz H + 0.005 pps Static Free + 5% NaCl + 0.125 pps CelloFlake + 0.1% FL-52A + 0.005 gps FP-6L + 6% Bentonite + 0.1% ASA-301 + 0.1% SMS + 1% FL-62A
	465	Tail: 50:50 Poz H + 2% Bentonite + 0.005 gps FP-6L + 0.005 pps Static Free + 5% NaCl + 0.1% R-3 + 0.2% CD-32 + 0.3% FL-52A
<i>Stage 2</i>	435	Lead: 50:50 Poz C + 0.005 pps Static Free + 5% NaCl + 0.25 pps CelloFlake + 5 pps LCM-1 + 0.005 gps FP-6L + 10% Bentonite
	100	Tail: Class H + 0.005 pps Static Free + 0.005 gps FP-6L
12,600'	410	Premium Plus H + 0.005 gps FP-6L + 0.4% BA-10A + 0.005 pps Static Free + 0.4% R-3 + 0.3% CD-32 + 1% FL-62 + 0.1% ASA-301 + 0.1% SMS

Mud Program:

Depth	Type	Weight (ppg)	Viscosity	Water Loss
0 - 450'	Fresh - Gel	8.6-8.8	28-34	N/c
450' - 2,300'	Brine	10.0-10.2	28-34	N/c
2,300' - 9,500'	Fresh Water	8.4 - 8.6	28-34	N/c
9,500' - 11,100'	Cut Brine	8.8-9.6	28-34	N/c
11,100' - 12,600'	Cut Brine/ Polymer	8.8-10.6	30-40	10-15



EOG Resources, Inc.
P.O. Box 2267
Midland, TX 79702
(432) 686-3600

December 15, 2008

State of New Mexico Energy, Minerals and Natural Resources
Oil Conservation Division
1220 South St. Francis Dr.
Santa Fe, NM 87505

To Whom It May Concern:

I am writing to request a waiver for the inclusion of an H₂S Contingency Plan for the Hoyt 3 State Com #1. The current plan is to complete this well in the Atoka/Morrow, which is sweet, and I do not anticipate encountering any H₂S bearing formations during drilling operations.

Sincerely,



Jason LaGrassa
Drilling Engineer