

OCD-ARTESIA

JAN 20 2009  
OCD-ARTESIA

ATS-09-35

Form 3160-3  
(April 2004)UNITED STATES  
DEPARTMENT OF THE INTERIOR  
BUREAU OF LAND MANAGEMENT

## APPLICATION FOR PERMIT TO DRILL OR REENTER

FORM APPROVED  
OMB No 1004-0137  
Expires March 31, 2007

1a Type of work <input checked="" type="checkbox"/> DRILL <input type="checkbox"/> REENTER		5 Lease Serial No <b>LC-058181</b>	
1b Type of Well <input checked="" type="checkbox"/> Oil Well <input type="checkbox"/> Gas Well <input type="checkbox"/> Other <input type="checkbox"/> Single Zone <input type="checkbox"/> Multiple Zone		6 If Indian, Allottee or Tribe Name	
2 Name of Operator <b>Lime Rock Resources A, L.P.</b>		7 If Unit or CA Agreement, Name and No	
3a Address <b>1111 Bagby St. Heritage Bldg., Ste 4600 Houston, TX 77002</b>		8 Lease Name and Well No. <b>Enron Federal #7</b>	
3b Phone No (include area code) <b>713-292-9537</b>		9 API Well No. <b>30-015-32551 Prev App 12/12/2002</b>	
4 Location of Well (Report location clearly and in accordance with any State requirements*) At surface <b>990' FSL 990' FWL Roswell Controlled Water Basin</b> At proposed prod zone <b>same</b>		10 Field and Pool, or Exploratory <b>Red Lake, QN-GB-SA</b>	
11 Sec., T. R. M. or Blk. and Survey or Area <b>Sec. 25, T17S-R27E, M</b>		12 County or Parish <b>Eddy</b>	
13 State <b>NM</b>		14 Distance in miles and direction from nearest town or post office* <b>11.5 miles east of Artesia, NM.</b>	
15 Distance from proposed* location to nearest property or lease line, ft (Also to nearest drig unit line, if any) <b>330'</b> <b>N/A</b>	16 No. of acres in lease <b>160</b>	17 Spacing Unit dedicated to this well <b>40</b>	
18 Distance from proposed location* to nearest well, drilling, completed, applied for, on this lease, ft. <b>933.4'</b>	19 Proposed Depth <b>3600'</b>	20 BLM/BIA Bond No. on file <b>NMB-000499</b>	
21 Elevations (Show whether DF, KDB, RT, GL, etc.) <b>3599 GL</b>	22 Approximate date work will start* <b>11/15/2008</b>	23 Estimated duration <b>4 weeks</b>	

## 24. Attachments

The following, completed in accordance with the requirements of Onshore Oil and Gas Order No.1, shall be attached to this form:

- Well plat certified by a registered surveyor
- A Drilling Plan.
- A Surface Use Plan (if the location is on National Forest System Lands, the SUPO shall be filed with the appropriate Forest Service Office).
- Bond to cover the operations unless covered by an existing bond on file (see Item 20 above).
- Operator certification
- Such other site specific information and/or plans as may be required by the authorized officer.

25. Signature <i>George R. Smith</i>	Name (Printed/Typed) <b>George R. Smith</b>	Date <b>10/09/2008</b>
Title <b>Agent for Lime Rock Resources A, L.P.</b>		
Approved by (Signature) <i>James Stovall</i>	Name (Printed/Typed) <b>James Stovall</b>	Date <b>JAN 15 2009</b>
Title <b>FIELD MANAGER</b>		
Office <b>CARLSBAD FIELD OFFICE</b>		

Application approval does not warrant or certify that the applicant holds legal or equitable title to those rights in the subject lease which would entitle the applicant to conduct operations thereon.

Conditions of approval, if any, are attached.

APPROVAL FOR TWO YEARS

Title 18 U.S.C. Section 1001 and Title 43 U.S.C. Section 1212, make it a crime for any person knowingly and willfully to make to any department or agency of the United States any false, fictitious or fraudulent statements or representations as to any matter within its jurisdiction.

\*(Instructions on page 2)

SEE ATTACHED FOR  
CONDITIONS OF APPROVALAPPROVAL SUBJECT TO  
GENERAL REQUIREMENTS  
AND SPECIAL STIPULATIONS  
ATTACHEDENTERED  
1-22-09

NM Oil Cons. Form

CISF

Form 3160-3  
(July 1992)

**UNITED STATES**  
**DEPARTMENT OF THE INTERIOR**  
**BUREAU OF LAND MANAGEMENT**

**SUBMIT IN TRIPLICATE\***  
(Other instructions on  
reverse side)

**FORM APPROVED**  
**OMB NO 1004-0136**  
**Expires: February 28, 1995**

**APPLICATION FOR PERMIT TO DRILL OR DEEPEN**

**1a. TYPE OF WORK** DRILL ☒ DEEPEN ☐ 559-4667

**b. TYPE OF WELL**  
OIL WELL ☒ GAS WELL ☐ OTHER ☐ SINGLE ZONE ☐ MULTIPLE ZONE ☐

**2. NAME OF OPERATOR**  
SDX Resources, Inc. 20451

**3. ADDRESS AND TELEPHONE NO**  
PO Box 5061, Midland, TX 79704 915/685-1761

**4. LOCATION OF WELL (Report location clearly and in accordance with any State requirements)**  
At surface 990' FSL 990' FWL  
At proposed prod. zone Same

**14. DISTANCE IN MILES AND DIRECTION FROM NEAREST TOWN OR POST OFFICE\***  
8.5 miles East of Artesia, NM

**15. DISTANCE FROM PROPOSED\* LOCATION TO NEAREST PROPERTY OR LEASE LINE, FT (Also to nearest drg. unit line, if any)**  
330' 330'

**16. NO. OF ACRES IN LEASE** 160

**17. NO. OF ACRES ASSIGNED TO THIS WELL** 40

**18. DISTANCE FROM PROPOSED LOCATION\* TO NEAREST WELL, DRILLING, COMPLETED, OR APPLIED FOR, ON THIS LEASE, FT** 1045'

**19. PROPOSED DEPTH** 4000'

**20. ROTARY OR CABLE TOOLS** Rotary

**21. ELEVATIONS (Show whether DF, RT, GR, etc.)** 3599' GR

**22. APPROX. DATE WORK WILL START\*** 01/01/03

**23. PROPOSED CASING AND CEMENTING PROGRAM**

SIZE OF HOLE	GRADE, SIZE OF CASING	WEIGHT PER FOOT	SETTING DEPTH	QUANTITY OF CEMENT
12-1/4"	8-5/8"	24#	300'	325 sk
7-7/8"	5-1/2"	14#	4000'	600 sk

Plan to drill a 12-1/4" hole to appx 300' & set 8-5/8" surf csg to 300'. Circ C/C cmt. Drill 7-7/8" hole to TD (4000'). Run OH logs. Run 5-1/2" csg & circ cmt. Perf the QN-GB-SA zone & stimulate as necessary for optimum production.

Specific programs as per Onshore Oil & Gas Order #1 are outlined in the following attachments:

Drilling Program  
Surface Use & Operating Plan  
Exhibit #1 - Location & Elevation Plat  
Exhibit #2 - BOP Equipment  
Exhibit #3 - Planned Roads & Access  
Exhibit #4 - One Mile Radius Map  
Exhibit #5 - Drilling Rig Layout  
Letter of Responsibility

**APPROVAL SUBJECT TO  
GENERAL REQUIREMENTS AND  
SPECIAL STIPULATIONS  
ATTACHED**

IN ABOVE SPACE DESCRIBE PROGRAM: If proposal is to deepen, give data on present productive zone and proposed new productive zone. If proposal is to drill or deepen directionally, give pertinent data on subsurface locations and measured and true vertical depths. Give blowout preventer program, if any

24. SIGNED Bonnie Otwater TITLE Regulatory Tech DATE 11/05/02  
(This space for Federal or State office use)

PERMIT NO

APPROVAL DATE

Application approval does not warrant or certify that the applicant holds legal or equitable title to those rights in the subject lease which would entitle the applicant to conduct operations thereon  
CONDITIONS OF APPROVAL, IF ANY

APPROVED BY /s/ Mary J. Rugwell TITLE FIELD MANAGER DATE DEC 12 2002

\*See Instructions On Reverse Side

**APPROVAL FOR 1 YEAR**

Title 18 U.S.C. Section 1001, makes it a crime for any person knowingly and willfully to make to any department or agency of the United States any false, fictitious or fraudulent statements or representations as to any matter within its jurisdiction.

District I  
1625 N. French Dr. Hobbs, NM 88240

District II  
811 South First, Artesia, NM 88210

District III  
1000 N. Brazos Rd., Aztec, NM 87410

District IV  
2040 South Pacheco, Santa Fe, NM 87505

State of New Mexico  
Energy, Minerals & Natural Resources

OIL CONSERVATION DIVISION

2040 South Pacheco  
Santa Fe, N M 87505

Form C-102

Revised March 17, 1999

Submit to Appropriate District Office

State Lease - 4 Copies

Fee Lease - 3 Copies

☐ AMENDED REPORT

WELL LOCATION AND ACREAGE DEDICATION PLAT

API Number <b>30-015-32551</b>	Pool Code <b>51300</b>	Pool Name <b>Red Lake, QN-GB-SA</b>
Property Code <b>305455</b>	Property Name <b>ENRON FEDERAL</b>	Well Number <b>7</b>
OGRID No. <b>255333</b>	Previous: <b>(SDX Resources, Inc) LIME ROCK RESOURCES A, L.P.</b>	Elevation <b>3599</b>

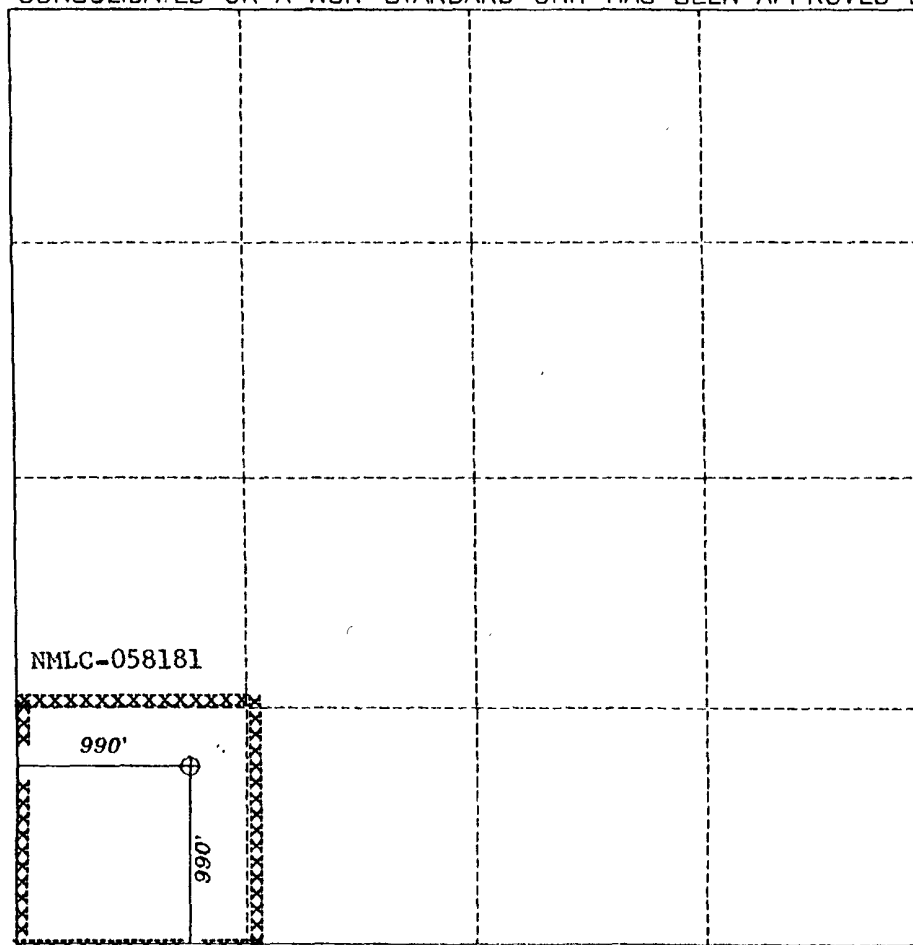
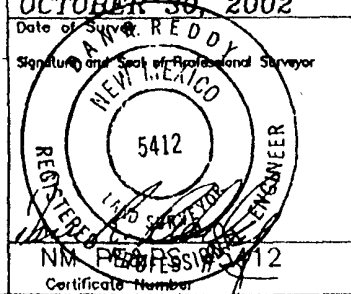
Surface Location

UL or Lot No. <b>M</b>	Section <b>25</b>	Township <b>17-S</b>	Range <b>27-E</b>	Lot Idn.	Feet from the <b>990</b>	North/South line <b>SOUTH</b>	Feet from the <b>990</b>	East/West line <b>WEST</b>	County <b>EDDY</b>
---------------------------	----------------------	-------------------------	----------------------	----------	-----------------------------	----------------------------------	-----------------------------	-------------------------------	-----------------------

Bottom Hole Location If Different From Surface

UL or Lot No.	Section	Township	Range	Lot Idn.	Feet from the	North/South line	Feet from the	East/West line	County
Dedicated Acres <b>40</b>	Joint or Infill	Consolidation Code	Order No.						

NO ALLOWABLE WILL BE ASSIGNED TO THIS COMPLETION UNTIL ALL INTEREST HAVE BEEN CONSOLIDATED OR A NON-STANDARD UNIT HAS BEEN APPROVED BY THE DIVISION

	OPERATOR CERTIFICATION	
	I HEREBY CERTIFY THAT THE INFORMATION HEREIN IS TRUE AND CORRECT TO THE BEST OF MY KNOWLEDGE AND BELIEF.	
	<i>George R. Smith</i> 10/13/08	
	George R. Smith, agent	
	Signature <i>Bonnie Atwater</i>	
	Printed Name Bonnie Atwater	
	Title Regulatory Tech	
	Date 11/6/02	
	SURVEYOR CERTIFICATION	
	I HEREBY CERTIFY THAT THE WELL LOCATION SHOWN ON THIS PLAT WAS PLOTTED FROM FIELD NOTES OF ACTUAL SURVEYS MADE BY ME OR UNDER MY SUPERVISION, AND THAT THE SAME IS TRUE AND CORRECT TO THE BEST OF MY KNOWLEDGE AND BELIEF.	
OCTOBER 30, 2002		
Date of Survey		
Signature and Seal of Professional Surveyor		
		
NM PROFESSIONAL SURVEYOR 5412		
Certificate Number		

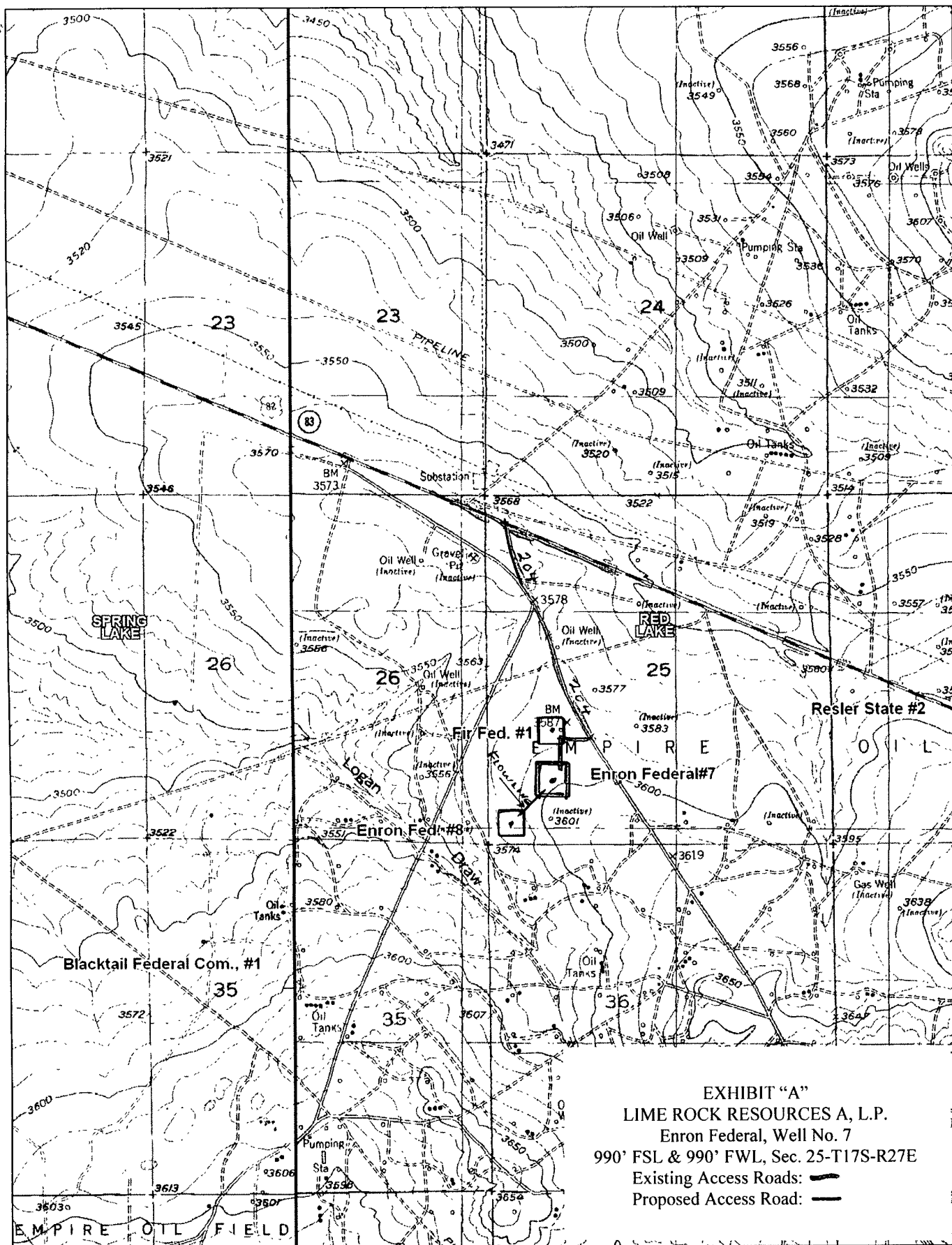


EXHIBIT "A"  
 LIME ROCK RESOURCES A, L.P.  
 Enron Federal, Well No. 7  
 990' FSL & 990' FWL, Sec. 25-T17S-R27E  
 Existing Access Roads: —  
 Proposed Access Road: —



© 2002 DeLorme. 3-D TopoQuads ©. Data copyright of content owner.  
 www.delorme.com

Scale 1 : 24,000  
 1" = 2000 ft

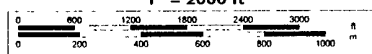
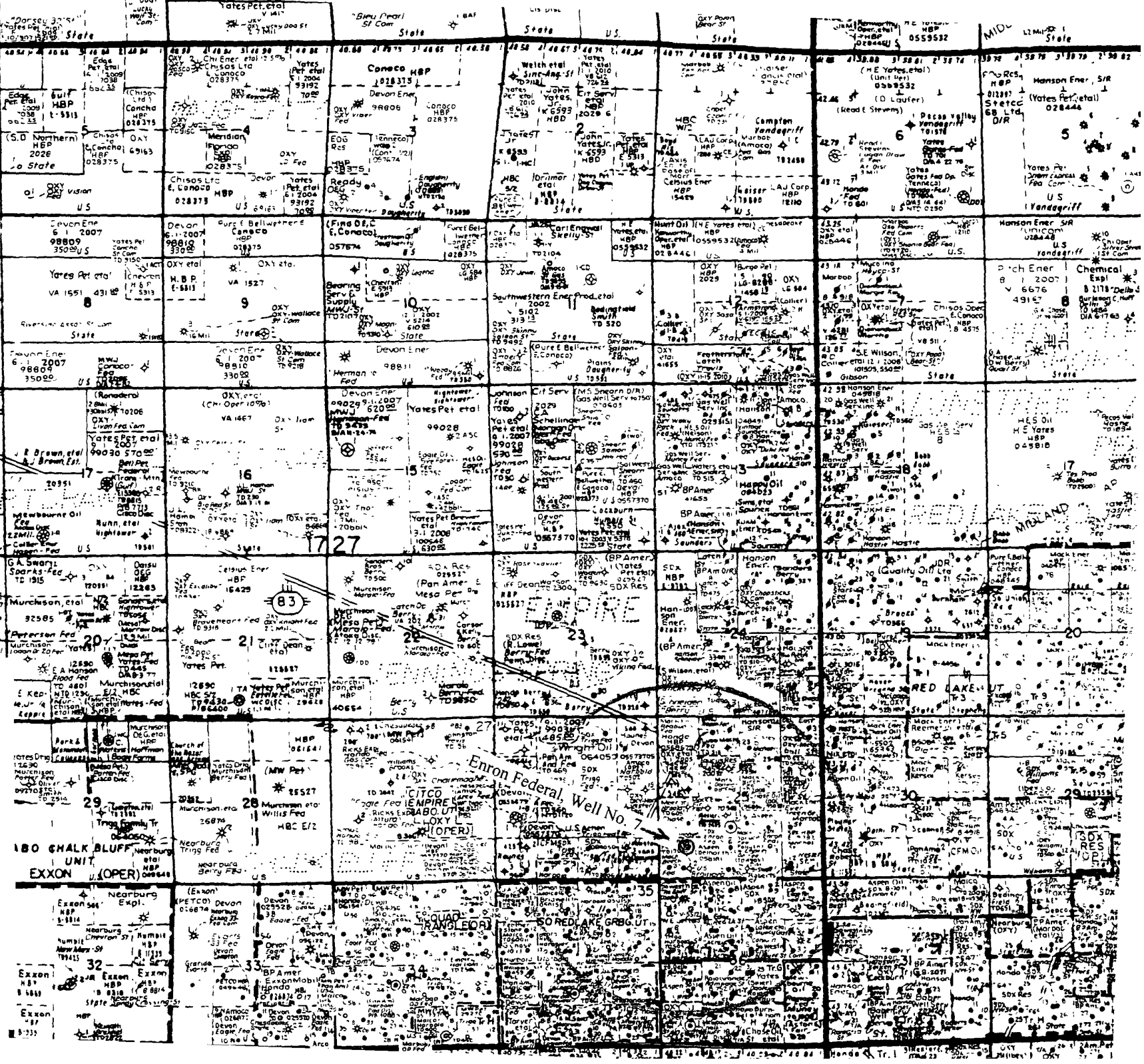


EXHIBIT "C"  
 LIME ROCK RESOURCES A, L.P.  
 Enron Federal Well No. 7  
 990' FSL & 990' FWL, Sec. 25-T17S-R27E  
 Existing Wells



**APPLICATION FOR DRILLING**  
**LIME ROCK RESOURCES A, L.P.**  
 Enron Federal, Well No. 7  
 990' FSL & 990' FWL, Sec. 25-T17S-R27E  
 Eddy County, New Mexico  
 Lease No.: NMLC-058181  
 (Development Well)

In conjunction with Form 3160-3, Application for Permit to Drill subject well, Lime Rock Resources A, L.P. submits the following items of pertinent information in accordance with BLM requirements:

1. The geologic surface formation is recent Permian with quaternary alluvium and other surficial deposits.

2. The estimated tops of geologic markers are as follows:

Yates	510'	San Andres	1,730'
Seven Rivers	820'	Glorieta	3,100'
Queen	1,100'	Yeso	3,370'
Grayburg	1,390'	T.D.	3,600'

3. The estimated depths at which water, oil or gas formations are anticipated to be encountered:

Water: Surface water possible in the Triassic between 80' - 230'.  
 Oil: Possible in the San Andres, Glorieta and Yeso below 1,730'.  
 Gas: Possible in the San Andres, Glorieta and Yeso below 1,730'.

4. Proposed New Casing Program:

HOLE SIZE	CASING SIZE	WEIGHT	GRADE	JOINT	SETTING DEPTH FACTOR	COLLAPSE DESIGN FACTOR	BURST DESIGN FACTOR	TENSION DESIGN FACTOR
12 1/4"	8 5/8"	24.0#	J-55	ST&C	450'	1.2	1.18	2.0
7 7/8"	5 1/2"	14.0#	J-55	ST&C	3,600'	1.2	1.18	2.0

5. Proposed Control Equipment: A 3M Shaffer Type LWS Double Gate BOP will be installed on the 8 5/8" casing. Casing and BOP will be tested as a 2M system as per Onshore Oil & Gas Order #2 before drilling out with the 7 7/8". The Pipe Rams will be operated and checked daily, plus each time drill pipe is out of hole. This will be documented on driller's log. See Exhibit "E".

6. Cement Program

← see COA

CASING	SETTING DEPTH	QUANTITY OF CEMENT	TOC	YEILD
8 5/8"	450'	350 sx "C" w/add.	Surface	1.3
5 1/2"	3,600'	Lead: 350 sx 35/65 Poz /"C" plus additives		2.0
		Tail: 400 sx "C" w/additives	Surface	1.3

**7. Mud Program:**

MUD PROGRAM		MUD WEIGHT	VIS.	W/L CONTROL
DEPTH	MUD			
0 – 450'	Fresh water mud:	8.5 ppg	40 - 45	No W/L control
450' – 3600'	Brine water, Starch, SWG	10.5 ppg	30	W/L control <24cc

**8. Auxiliary Equipment:** Blowout Preventer, gas detector, Kelly cock.

**9. Testing, Logging, and Coring Program:**

Drill Stem Tests: None planned unless warranted.

Logging: T.D –Surface Casing: GR-DLL, GR-CND  
 450' to surface: G/R/Neutron

Coring: None planned unless warranted..

**10.** No abnormal pressures or temperatures are anticipated. In the event abnormal pressures are encountered the proposed mud program will be modified to increase the mud weight. Estimated Surface Pressure = 1080 psi (evac. hole) and BHP of 1872 psi (evac) with temperature of 96°.

**11. H<sub>2</sub>S:** None expected. The mud log unit will be cautioned to use a gas trap to detect H<sub>2</sub>S and if any is detected the mud weight will be increased along with H<sub>2</sub>S inhibitors sufficient to control the gas. H<sub>2</sub>S monitoring equipment will be installed before drilling out from the 8 5/8" casing

← see COA

**12.** Anticipated starting date: November 15, 2008.  
 Anticipated completion of drilling operations: Approx. 4 weeks

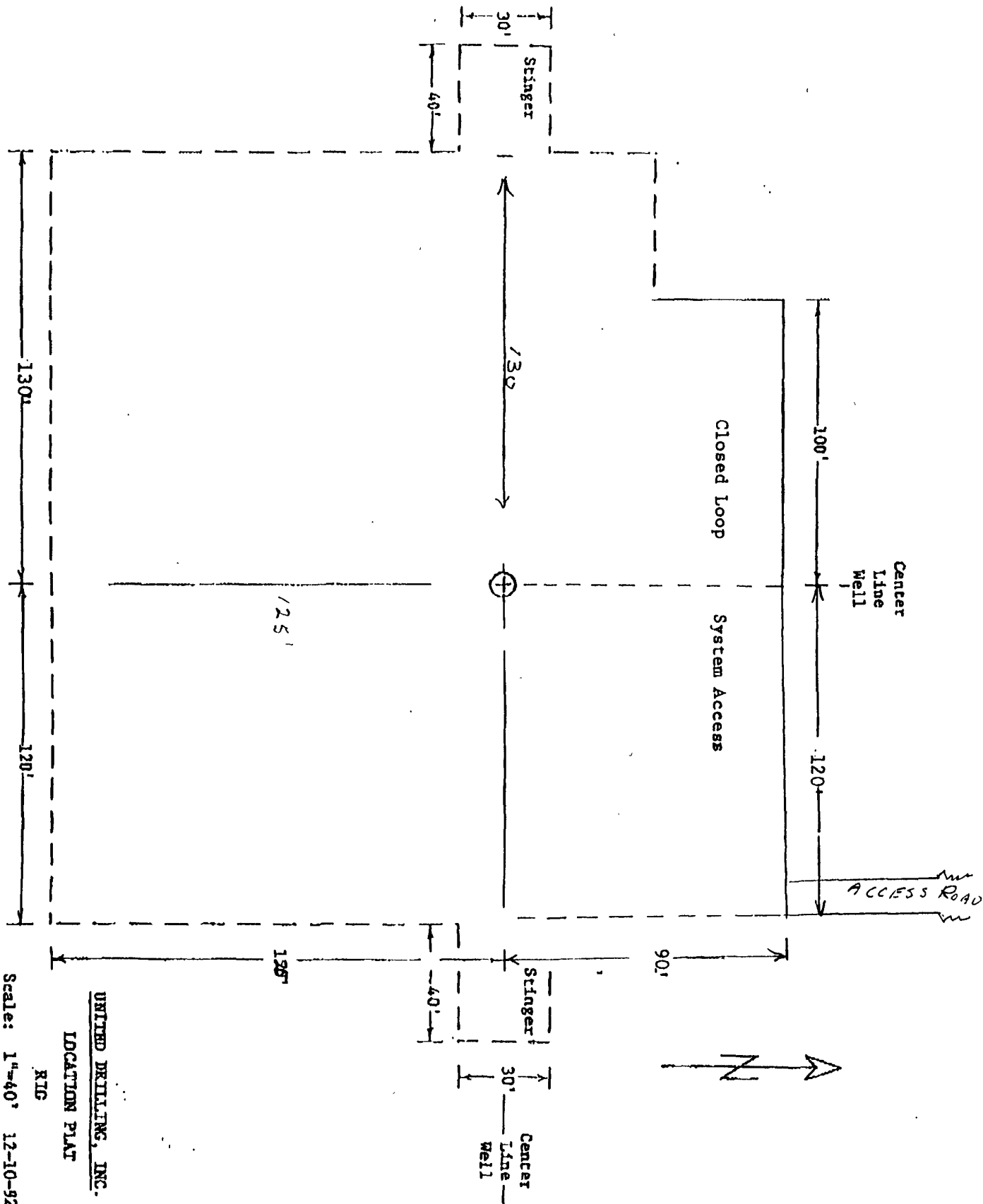


EXHIBIT "D"  
LIME ROCK RESOURCES A, L.P.  
Enron Federal, Well No. 7  
Pad & Pit Layout



## BOP DIAGRAM 3000# SYSTEM

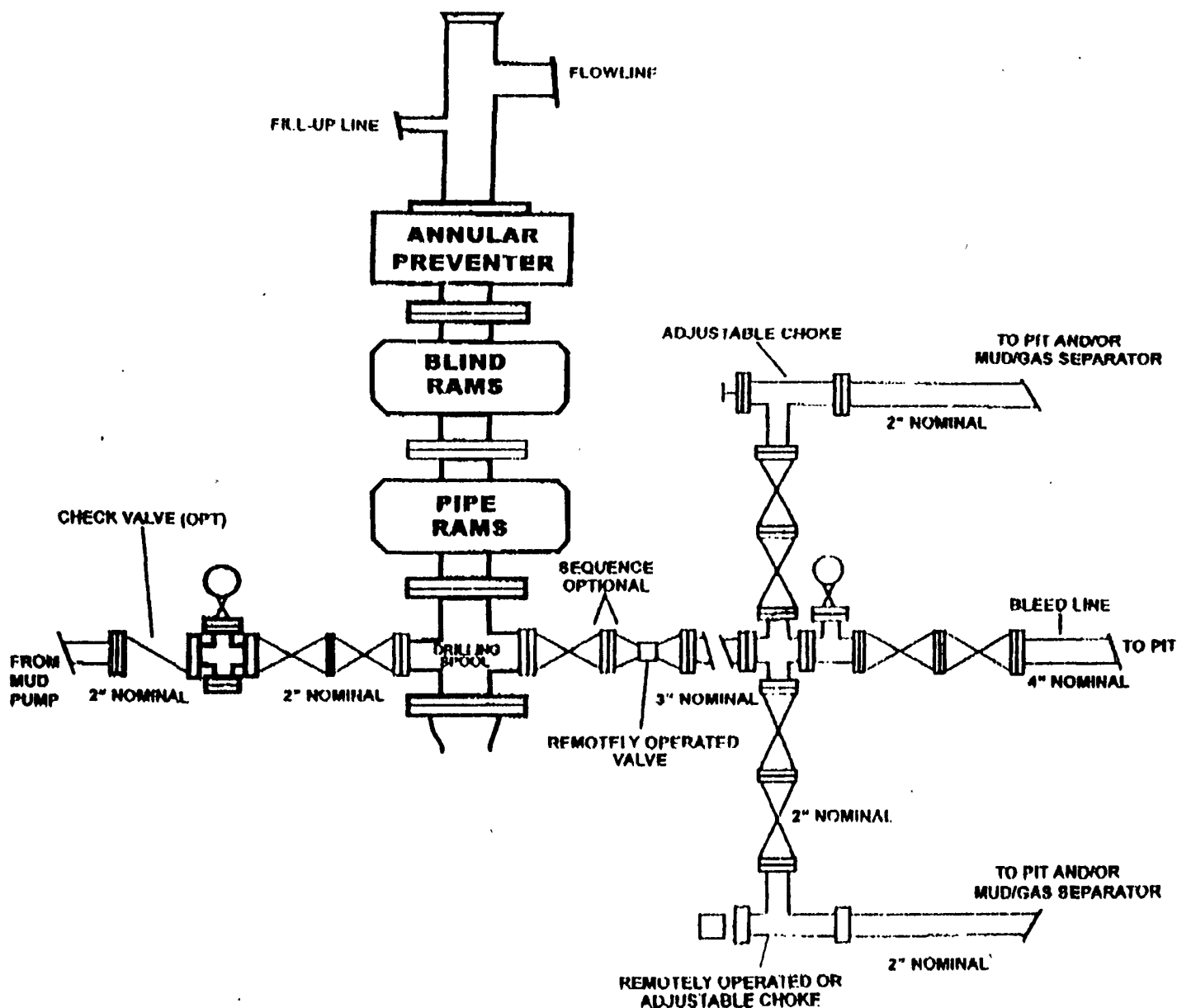


EXHIBIT "E"  
LIME ROCK RESOURCES A, L.P.  
Enron Federal, Well No. 7  
BOP Specifications

EXHIBIT "F"

**Lime Rock Resources A, L.P**

**H<sub>2</sub>S DRILLING OPERATIONS PLAN**

For:

Enron Federal, Well No. 7  
990' FSL & 990' FWL, Sec. 25-T17S-R27E

**I. HYDROGEN SULFIDE TRAINING**

All key personnel whether regularly assigned, contracted or employed on an unscheduled basis will receive or represent that they have received training in accordance with the general training requirements outlined in the API RP49 for safe drilling of wells containing hydrogen sulfide, Section 2.

In addition, supervisory personnel will be trained in the following areas:

1. The corrective action and shut-in procedures when drilling or reworking a well, and blowout prevention in well control procedures.
2. The contents and requirements of the H<sub>2</sub>S drilling operations plan.

**II. H<sub>2</sub>S SAFETY EQUIPMENT AND SYSTEMS**

Note: All H<sub>2</sub>S safety equipment and systems will be installed, tested and operational when drilling reaches a depth of 500' above the first zone containing or reasonably expected to contain 100 ppm or more hydrogen sulfide.

**1. Well Control Equipment:**

- a. Choke manifold with a minimum of one choke.
- b. Blind rams and pipe rams and pipe rams to accommodate all drill pipe sizes with a properly sized closing unit.

**2. Protective Equipment:**

- a. Proper protective breathing apparatus shall be readily accessible to all essential personnel on the drill site.

**3. H<sub>2</sub>S and Monitoring Equipment:**

- a. Three portable H<sub>2</sub>S monitors positioned on location for best coverage and response. These units have warning lights and audible sirens.

**4. Visual Warning Systems:**

- a. Wind direction indicators as shown on well site diagram.
- b. Caution/Danger signs shall be posted on roads providing direct access to location.

Bureau of Land Management  
RECEIVED

NOV 07 2008

Carlsbad Field Office  
Carlsbad, NM

**5. Mud Program:**

- a. The mud program has been designed to minimize the volume of H<sub>2</sub>S circulated to the surface. Proper mud weight and safe drilling practices will minimize hazards when penetrating possible H<sub>2</sub>S bearing zones.

**6. Communications:**

EMERGENCY PHONE NUMBERS

- . See attached Contingency Plan for a list of Phone Contacts.

**7. Well Testing:**

- a. Drillstem testing, if required, will be performed with a minimum number of personnel in the immediate vicinity, which are necessary to safely and adequately conduct the test. When drillstem testing intervals known to or reasonably expected to contain 100 ppm or more H<sub>2</sub>S, the drillstem test will be conducted during daylight hours and formation fluids will not be flowed to the surface.

## HYDROGEN SULFIDE (H<sub>2</sub>S) CONTINGENCY PLAN

Assumed 100 ppm ROE = 3000'

100 ppm H<sub>2</sub>S concentration shall trigger activation of this plan.

### Emergency Procedures

In the event of a release of gas containing H<sub>2</sub>S, the first responder(s) must

- Isolate the area and prevent entry by other persons into the 100 ppm ROE.
- Evacuate any public places encompassed by the 100 ppm ROE.
- Be equipped with H<sub>2</sub>S monitors and air packs in order to control the release.
- Use the "buddy system" to ensure no injuries occur during the response
- Take precautions to avoid personal injury during this operation.
- Contact operator and/or local officials to aid in operation. See list of phone numbers attached.
- Have received training in the
  - Detection of H<sub>2</sub>S, and
  - Measures for protection against the gas,
  - Equipment used for protection and emergency response.

### Ignition of Gas source

Should control of the well be considered lost and ignition considered, take care to protect against exposure to Sulfur Dioxide (SO<sub>2</sub>). Intentional ignition must be coordinated with the NMOCD and local officials. Additionally the NM State Police may become involved. NM State Police shall be the Incident Command on scene of any major release. Take care to protect downwind whenever this is an ignition of the gas.

### Characteristics of H<sub>2</sub>S and SO<sub>2</sub>

Common Name	Chemical Formula	Specific Gravity	Threshold Limit	Hazardous Limit	Lethal Concentration
Hydrogen Sulfide	H <sub>2</sub> S	1.189 Air = 1	10 ppm	100 ppm/hr	600 ppm
Sulfur Dioxide	SO <sub>2</sub>	2.21 Air = 1	2 ppm	N/A	1000 ppm

### Contacting Authorities

Lime Rock Resources personnel must liaison with local and state agencies to ensure a proper response to a major release. Additionally, the OCD must be notified of the release as soon as possible but no later than 4 hours. Agencies will ask for information such as type and volume of release, wind direction, location of release, etc. Be prepared with all information available including directions to site. The following call list of essential and potential responders has been prepared for use during a release. Lime Rock Resources response must be in coordination with the State of New México's "Hazardous Materials Emergency Response Plan" (HMER).

## H<sub>2</sub>S CONTINGENCY PLAN EMERGENCY CONTACTS

**Company Office** 713-292-9510  
**Answering Service (During Non-Office Hours)** 713-292-9555

### Key Personnel

<u>Name</u>	<u>Title</u>	<u>Phone Number</u>
Jerry B. Ables, Jr.	Production Engineer	713-292-9537 Cell: 713-213-0254
Mike Barrett	Production Supervisor	575-623-8424 Cell: 505-353-2644

---

Ambulance	911
State Police	575-746-2703
City Police	575-746-2703
Sheriff's Office	575-746-9888
Fire Department	575-746-2701
Local Emergency Planning Committee	575-746-2122
New Mexico Oil Conservation Division	575-748-1283

### Carlsbad

Ambulance	911
State Police	575-8885-3137
City Police	575-885-2111
Sheriff's Office	575-887-7551
Fire Department	575-887-3798
Local Emergency Planning Committee	575-887-6544
US Bureau of Land Management	575-887-6544

New Mexico Emergency Response Commission (Santa Fe)	505-476-9600
24 Hour	505-827-9126
New Mexico State Emergency Operations Center	505-476-9635
National Emergency Response Center (Washington, DC)	800-424-8802

### Other

Boots & Coots IWC	800-256-9688 or 281-931-8884
Cudd PressureControl	915-699-0139 or 915-563-3356
Halliburton	575-746-2757
B. J. Services	575-746-3569
Flight For Life – 4000 24 <sup>th</sup> St. Lubbock, Texas	806-743-9911
Aerocare – R3, Box 49F, Lubbock, Texas	806-747-8923
Med Flight Air Amb – 2301 Yale Blvd SE #D3, Albuquerque, NM	505-842-4433
S B Air Med Service – 2505 Clark Carr Loop SE, Albuquerque, NM	505-842-4949

## **MULTI POINT SURFACE USE AND OPERATIONS PLAN**

**LIME ROCK RESOURCES A, L.P.**  
Enron Federal, Well No. 7  
990' FSL & 990' FWL, Sec. 25-T17S-R27E  
Eddy County, New Mexico  
Lease No.: NMLC-058181  
(Development Well)

This plan is submitted with the Application for Permit to Drill the above described well. The purpose of the plan is to describe the location of the proposed well, the proposed construction activities and operations plan to be followed in rehabilitating the surface and environmental effects associated with the operations.

### **1. EXISTING ROADS:**

- A. Exhibit "A" is a portion of a BLM topo map showing the location of the proposed well as staked. The well site location is approximately 10.2 road miles east of Artesia, NM. Traveling east of Artesia on U.S. Hwy 82 there will be approximately 9.3 miles of existing highway and .6 miles of County Rd. 204.
- B. Directions: Travel east of U.S. Hwy 285 in Artesia on U.S. Hwy 82 for 9.3 miles to County Rd. 204. Turn southeast approximately .6 mile to a caliche road on the west to the Fir Federal, Well No. 1. The start of the proposed access road is on the southeast corner of the pad and will run 448 feet south to the NE corner of the proposed well pad.

### **2. PLANNED ACCESS ROAD:**

- A. Length and Width: The proposed new access road will be approximately 12 feet wide and 448 feet long. The proposed and existing roads are color coded on Exhibit "A".
- B. Construction: The proposed access road will be constructed by grading and topping with compacted caliche. The surface will be properly drained.
- C. Turnouts: None will be required.
- D. Culverts: None.
- E. Cuts and Fills: None required.
- F. Gates, Cattle guards: None will be required.
- G. Off lease right of way: None required.

### **3. LOCATION OF EXISTING WELLS:**

- A. Existing wells within a two-mile radius are shown on Exhibit "C".

### **4. LOCATION OF EXISTING AND/OR PROPOSED FACILITIES;**

- A. Lime Rock Resources A, L.P. has production facilities on the lease at this time.
- B. If the well proves to be commercial, the necessary production facilities, gas separation-process equipment will be installed on the drilling pad. A 925' surface production flow line will be installed to the Enron Federal #8 well pad, at 330' FSL & 330' FWL, Sec. 25-T17S-R27E, for hookup to the existing flow line to the tank battery.

**LIME ROCK RESOURCES A, L.P.**

Enron Federal, Well No. 7

Page 2

**5. LOCATION AND TYPE OF WATER SUPPLY:**

- A. It is planned to drill the proposed well with fresh water that will be obtained from private or commercial sources and will be transported over the existing and proposed access roads

**6. SOURCE OF CONSTRUCTION MATERIALS:**

- A. Caliche for surfacing the proposed access road and well site pad will be obtained from the approved Federal pit in the NE4NW4 Sec. 12-T18S-R27E or closer pit if available. No surface materials will be disturbed except those necessary for actual grading and leveling of the drill site and access road.

**7. METHODS OF HANDLING WASTE DISPOSAL:**

- A. Drill cuttings and liquids will be stored in the steel tanks of the closed loop mud system during the drilling operations and delivered to CRI, Permit No. R-9166, as needed, and at closure.
- B. There will be no mud pits to be fenced.
- C. Water produced during operations will be collected in tanks until hauled to an approved disposal system, or a separate disposal application will be submitted to the BLM for approval.
- D. Oil produced during operations will be stored in tanks until sold.
- E. Current laws and regulations pertaining to the disposal of human waste will be complied with.
- F. Trash, waste paper, garbage and junk will be contained in trash bins to prevent scattering by the wind and will be removed for deposit in an approved sanitary landfill within 30 days after finishing drilling and/or completion operations.

**8. ANCILLARY FACILITIES:**

- A. None required.

**9. WELL SITE LAYOUT:**

- A. Exhibit "D" shows the relative location and dimensions of the well pad, reserve pits, and major rig components. The pad and pit area has been staked and flagged, 600' X 600'.
- B. Mat Size: 250' X 125', plus 90' X 250' pad to service the closed loop mud system on the north.
- C. Cut & Fill: The location will require a 1 – 1.5- foot cut on the southeast with fill to the northwest.
- D. The surface will be topped with compacted caliche.

**LIME ROCK RESOURCES A, L.P.**

Enron Federal, Well No. 7

Page 3

**10. PLANS FOR RESTORATION OF THE SURFACE:**

- A. After completion of drilling and/or completion operations, all equipment and other material not required for operations will be removed. The location will be cleaned of all trash and junk to leave the well site in an aesthetically pleasing a condition as possible.
- B. There will be no unguarded pits containing fluids.
- C. If the proposed well is non-productive, all rehabilitation and/or vegetation requirements of the Bureau of Land Management will be complied with and will be accomplished as expeditiously as possible. Mud from the closed system will be disposed of as required.

**11. OTHER INFORMATION:**

- A. Topography: The proposed well site and access road are located on a 1.3% slope to the northwest. The location has an elevation of 3599' GL.
- B. Soil: The topsoil at the well site is a tan loamy soil with some surface scatter and underlying fractured gypsum rock and some exposed bedrock outcrops. The soil is part of the Reeves-Gypsum land complex.
- C. Flora and Fauna: The location has a fair to poor grass cover of grama, tobosa and alkali sacaton along with plants of mesquite, yucca, broomweed, creosote bush, cacti and miscellaneous weeds and wildflowers. The wildlife consists of rabbits, coyotes, antelope, deer, rattlesnakes, lizards, dove, quail and other wildlife typical of the semi-arid desert land.
- D. Ponds and Streams: None.
- E. Residences and Other Structures: None in the immediate vicinity, except the Fir Federal Well No. 1, 750 feet to the north and other wells on the same Enron lease.
- F. Land Use: Cattle grazing.
- G. Surface Ownership: The proposed well site and access road is on Federal surface and minerals.
- H. There is no evidence of archaeological, historical or cultural sites in the staked area. Boone Archaeological Services, 2030 N. Canal, Carlsbad, NM 88220 has conducted an archaeological survey and their report was submitted to the appropriate government agencies in November 2002, BLM #03-09-0, Boone # BAS-11-02-02.

**12. OPERATOR'S REPRESENTATIVE:**

- A. The field representative for assuring compliance with the approved use and operations plan is as follows:

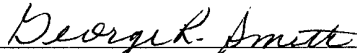
Jerry B. Ables  
LIME ROCK RESOURCES A, L.P.  
Heritage Plaza  
1111 Bagby Street Ave. Suite 4600  
Houston, TX 77002  
Office Phone: 713-292-9537  
Cell Phone: 713-213-0254



**CERTIFICATION:**

I hereby certify that I have inspected the proposed drill site and access route; that I am familiar with the conditions which presently exist; that the statements made in the plan are, to the best of my knowledge, true and correct; and, that the work associated with the operations proposed herein will be performed by Lime Rock Resources A, L.P. and its contractors and subcontractors in conformity with this plan and the terms and conditions under which it is approved. This statement is subject to the provisions of 18 U.S.C. 1001 for the filing of a false statement.

October 13, 2008

  
\_\_\_\_\_  
George R. Smith  
Agent for: LIME ROCK RESOURCES A, L.P.

# PECOS DISTRICT CONDITIONS OF APPROVAL

OPERATOR'S NAME:	Lime Rock Resources A, L.P.
LEASE NO.:	LC058181
WELL NAME & NO.:	Enron Federal No. 7
SURFACE HOLE FOOTAGE:	990' FSL & 990' FWL
BOTTOM HOLE FOOTAGE:	Same
LOCATION:	Section 25, T. 17S S., R 27 E., NMPM
COUNTY:	Eddy County, New Mexico

## TABLE OF CONTENTS

Standard Conditions of Approval (COA) apply to this APD. If any deviations to these standards exist or special COAs are required, the section with the deviation or requirement will be checked below.

- ☐ **General Provisions**
- ☐ **Permit Expiration**
- ☐ **Archaeology, Paleontology, and Historical Sites**
- ☐ **Noxious Weeds**
- ☒ **Special Requirements**
  - Cave/Karst
- ☒ **Construction**
  - Pad size restrictions
  - Notification
  - Topsoil
  - Reserve Pit
  - Federal Mineral Material Pits
  - Well Pads
  - Roads
- ☐ **Road Section Diagram**
- ☒ **Drilling**
  - High cave/karst requirements
- ☒ **Production (Post Drilling)**
  - Well Structures & Facilities
  - Pipelines
- ☐ **Interim Reclamation**
- ☐ **Final Abandonment/Reclamation**

## **I. GENERAL PROVISIONS**

The approval of the Application For Permit To Drill (APD) is in compliance with all applicable laws and regulations: 43 Code of Federal Regulations 3160, the lease terms, Onshore Oil and Gas Orders, Notices To Lessees, New Mexico Oil Conservation Division (NMOCD) Rules, National Historical Preservation Act As Amended, and instructions and orders of the Authorized Officer. Any request for a variance shall be submitted to the Authorized Officer on Form 3160-5, Sundry Notices and Report on Wells.

## **II. PERMIT EXPIRATION**

If the permit terminates prior to drilling and drilling cannot be commenced within 60 days after expiration, an operator is required to submit Form 3160-5, Sundry Notices and Reports on Wells, requesting surface reclamation requirements for any surface disturbance. However, if the operator will be able to initiate drilling within 60 days after the expiration of the permit, the operator must have set the conductor pipe in order to allow for an extension of 60 days beyond the expiration date of the APD. (Filing of a Sundry Notice is required for this 60 day extension.)

## **III. ARCHAEOLOGICAL, PALEONTOLOGY & HISTORICAL SITES**

Any cultural and/or paleontological resource discovered by the operator or by any person working on the operator's behalf shall immediately report such findings to the Authorized Officer. The operator is fully accountable for the actions of their contractors and subcontractors. The operator shall suspend all operations in the immediate area of such discovery until written authorization to proceed is issued by the Authorized Officer. An evaluation of the discovery shall be made by the Authorized Officer to determine the appropriate actions that shall be required to prevent the loss of significant cultural or scientific values of the discovery. The operator shall be held responsible for the cost of the proper mitigation measures that the Authorized Officer assesses after consultation with the operator on the evaluation and decisions of the discovery. Any unauthorized collection or disturbance of cultural or paleontological resources may result in a shutdown order by the Authorized Officer.

## **IV. NOXIOUS WEEDS**

The operator shall be held responsible if noxious weeds become established within the areas of operations. Weed control shall be required on the disturbed land where noxious weeds exist, which includes the roads, pads, associated pipeline corridor, and adjacent land affected by the establishment of weeds due to this action. The operator shall consult with the Authorized Officer for acceptable weed control methods, which include following EPA and BLM requirements and policies.

## **V. SPECIAL REQUIREMENT(S)**

### **Cave and Karst**

\*\* Depending on location, additional Drilling, Casing, and Cementing procedures may be required by engineering to protect critical karst groundwater recharge areas.

#### **Cave/Karst Surface Mitigation**

The following stipulations will be applied to minimize impacts during construction, drilling and production.

##### **Construction:**

In the advent that any underground voids are opened up during construction activities, construction activities will be halted and the BLM will be notified immediately.

##### **Closed Mud System Using Steel Tanks with All Fluids and Cuttings Hauled Off.**

A closed mud system using steel tanks for all cuttings and fluids is required. All fluids and cuttings will be hauled off site for disposal. No pits are allowed.

##### **Tank Battery Liners and Berms:**

Tank battery locations will be lined and bermed. A 20 mil permanent liner will be installed with a 4 oz. felt backing to prevent tears or punctures. Tank battery berms must be large enough to contain 1 ½ times the content of the largest tank.

##### **Leak Detection System:**

A method of detecting leaks is required. The method could incorporate gauges to measure loss, siting valves and lines so they can be visually inspected, or installing electronic sensors to alarm when a leak is present. Leak detection plan will be submitted to BLM for approval.

##### **Automatic Shut-off Systems:**

Automatic shut off, check valves, or similar systems will be installed for pipelines and tanks to minimize the effects of catastrophic line failures used in production or drilling.

#### **Cave/Karst Subsurface Mitigation**

The following stipulations will be applied to protect cave/karst and ground water concerns:

##### **Rotary Drilling with Fresh Water:**

Fresh water will be used as a circulating medium in zones where caves or karst features are expected. SEE ALSO: Drilling COAs for this well.

##### **Directional Drilling:**

Kick off for directional drilling will occur at least 100 feet below the bottom of the cave occurrence zone. SEE ALSO: Drilling COAs for this well.

**Lost Circulation:**

ALL lost circulation zones from the surface to the base of the cave occurrence zone will be logged and reported in the drilling report.

Regardless of the type of drilling machinery used, if a void of four feet or more and circulation losses greater than 70 percent occur simultaneously while drilling in any cave-bearing zone, the BLM will be notified immediately by the operator. The BLM will assess the situation and work with the operator on corrective actions to resolve the problem.

**Abandonment Cementing:**

Upon well abandonment in high cave karst areas additional plugging conditions of approval may be required. The BLM will assess the situation and work with the operator to ensure proper plugging of the wellbore.

**Pressure Testing:**

Annual pressure monitoring will be performed by the operator on all casing annuli and reported in a sundry notice. If the test results indicated a casing failure has occurred, remedial action will be undertaken to correct the problem to the BLM's approval.

## **VI. CONSTRUCTION**

**RESTRICT PAD SIZE TO THE EAST TO 95 FT. AND 100 FT. TO THE SOUTH DUE TO PIPELINES.**

### **A. NOTIFICATION**

The BLM shall administer compliance and monitor construction of the access road and well pad. Notify the Carlsbad Field Office at (575) 234-5972 at least 3 working days prior to commencing construction of the access road and/or well pad.

When construction operations are being conducted on this well, the operator shall have the approved APD and Conditions of Approval (COA) on the well site and they shall be made available upon request by the Authorized Officer.

### **B. TOPSOIL**

The operator shall stockpile the topsoil of the well pad. The topsoil to be stripped is approximately 4 inches in depth. The topsoil shall not be used to backfill the reserve pit and will be used for interim and final reclamation.

### **C. RESERVE PITS**

Tanks are required for drilling operations: No Pits.

The operator shall properly dispose of drilling contents at an authorized disposal site.

### **D. FEDERAL MINERAL MATERIALS PIT**

If the operator elects to surface the access road and/or well pad, mineral materials extracted during construction of the reserve pit may be used for surfacing the well pad and access road and other facilities on the lease.

Payment shall be made to the BLM prior to removal of any additional federal mineral materials from any site other than the reserve pit. Call the Carlsbad Field Office at (575) 234-5972.

### **E. WELL PAD SURFACING**

Surfacing of the well pad is not required.

If the operator elects to surface the well pad, the surfacing material may be required to be removed at the time of reclamation.

The well pad shall be constructed in a manner which creates the smallest possible surface disturbance, consistent with safety and operational needs.

## **F. ON LEASE ACCESS ROADS**

### **Road Width**

The access road shall have a driving surface that creates the smallest possible surface disturbance and does not exceed fourteen (14) feet in width. The maximum width of surface disturbance, when constructing the access road, shall not exceed thirty (30) feet.

### **Surfacing**

Surfacing material is not required on the new access road driving surface. If the operator elects to surface the new access road or pad, the surfacing material may be required to be removed at the time of reclamation.

Where possible, no improvements should be made on the unsurfaced access road other than to remove vegetation as necessary, road irregularities, safety issues, or to fill low areas that may sustain standing water.

The Authorized Officer reserves the right to require surfacing of any portion of the access road at any time deemed necessary. Surfacing may be required in the event the road deteriorates, erodes, road traffic increases, or it is determined to be beneficial for future field development. The surfacing depth and type of material will be determined at the time of notification.

### **Crowning**

Crowning shall be done on the access road driving surface. The road crown shall have a grade of approximately 2% (i.e., a 1" crown on a 14' wide road). The road shall conform to Figure 1; cross section and plans for typical road construction.

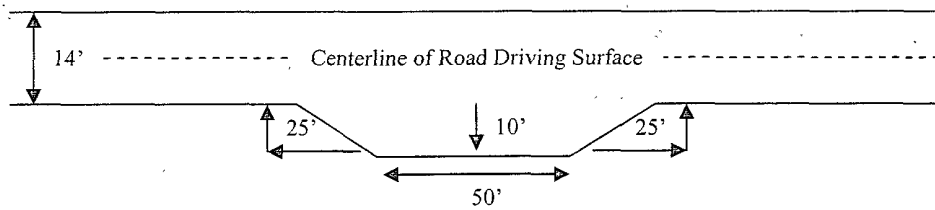
### **Ditching**

Ditching shall be required on both sides of the road.

### **Turnouts**

Vehicle turnouts shall be constructed on the road. Turnouts shall be intervisible with interval spacing distance less than 1000 feet. Turnouts shall be constructed on all blind curves. Turnouts shall conform to the following diagram:

### Standard Turnout – Plan View

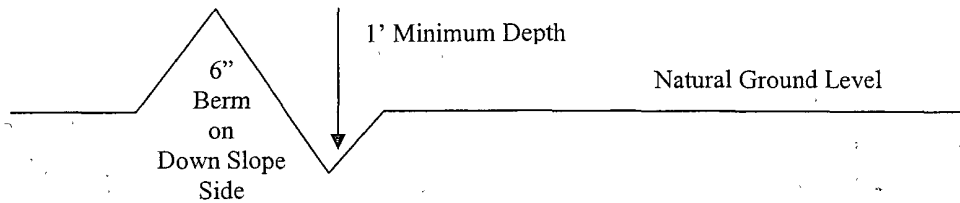


### Drainage

Drainage control systems shall be constructed on the entire length of road (e.g. ditches, sidehill outsloping and insloping, lead-off ditches, culvert installation, and low water crossings).

A typical lead-off ditch has a minimum depth of 1 foot below and a berm of 6 inches above natural ground level. The berm shall be on the down-slope side of the lead-off ditch.

### Cross Section of a Typical Lead-off Ditch



All lead-off ditches shall be graded to drain water with a 1 percent minimum to 3 percent maximum ditch slope. The spacing interval are variable for lead-off ditches and shall be determined according to the formula for spacing intervals of lead-off ditches, but may be amended depending upon existing soil types and centerline road slope (in %);

### Formula for Spacing Interval of Lead-off Ditches

Example - On a 4% road slope that is 400 feet long, the water flow shall drain water into a lead-off ditch. Spacing interval shall be determined by the following formula:

$$400 \text{ foot road with } 4\% \text{ road slope: } \frac{400'}{4\%} + 100' = 200' \text{ lead-off ditch interval}$$

### Culvert Installations

Appropriately sized culvert(s) shall be installed at the deep waterway channel flow crossing.

### Cattleguards

An appropriately sized cattleguard(s) sufficient to carry out the project shall be installed and maintained at fence crossing(s).



Any existing cattleguard(s) on the access road shall be repaired or replaced if they are damaged or have deteriorated beyond practical use. The operator shall be responsible for the condition of the existing cattleguard(s) that are in place and are utilized during lease operations.

A gate shall be constructed and fastened securely to H-braces.

**Fence Requirement**

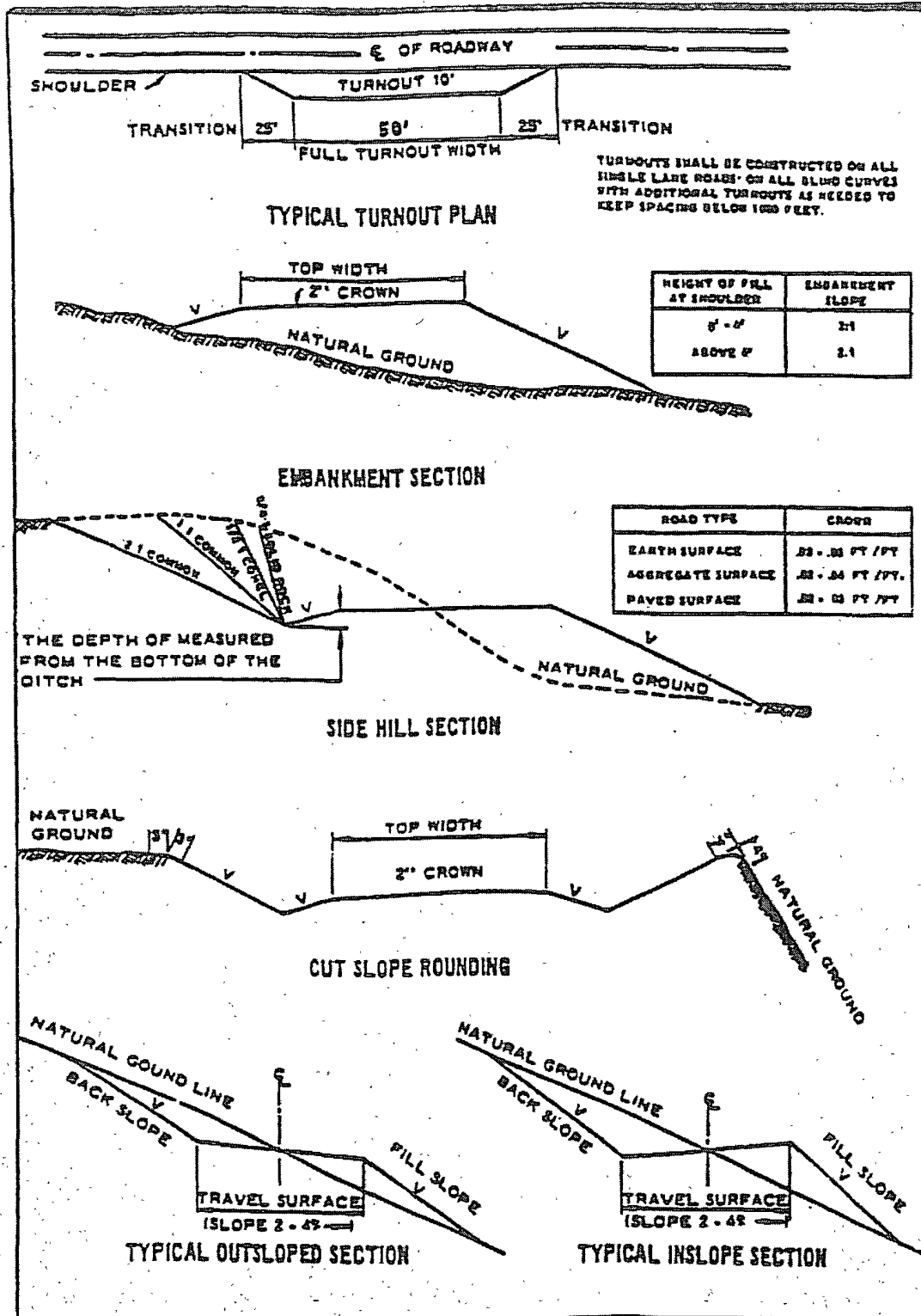
Where entry is required across a fence line, the fence shall be braced and tied off on both sides of the passageway prior to cutting.

The operator shall notify the private surface landowner or the grazing allotment holder prior to crossing any fence(s).

**Public Access**

Public access on this road shall not be restricted by the operator without specific written approval granted by the Authorized Officer.

Figure 1 – Cross Sections and Plans For Typical Road Sections



## **VII. DRILLING**

### **A. DRILLING OPERATIONS REQUIREMENTS**

The BLM is to be notified a minimum of 4 hours in advance for a representative to witness:

- a. Spudding well
- b. Setting and/or Cementing of all casing strings
- c. BOPE tests

☒ **Eddy County**

Call the Carlsbad Field Office, 620 East Greene St., Carlsbad, NM 88220,  
(575) 361-2822

1. **A Hydrogen Sulfide (H<sub>2</sub>S) Drilling Plan should be in place when drilling commences as Hydrogen Sulfide has been encountered in the Yates formation. If Hydrogen Sulfide is encountered, please provide measured values and formations to the BLM.**
2. Unless the production casing has been run and cemented or the well has been properly plugged, the drilling rig shall not be removed from over the hole without prior approval.

### **B. CASING**

**Changes to the approved APD casing and cement program require submitting a sundry and receiving approval prior to work. Failure to obtain approval prior to work will result in an Incident of Non-Compliance being issued.**

**Centralizers required on surface casing per Onshore Order 2.III.B.1.f.**

**Wait on cement (WOC) time for a primary cement job will be a minimum 18 hours for a water basin, 24 hours in the potash area, or 500 pounds compressive strength, whichever is greater for all casing strings. Provide compressive strengths including hours to reach required 500 pounds compressive strength prior to cementing each casing string. See individual casing strings for details regarding lead cement slurry requirements.**

**No pea gravel permitted for remedial or fall back remedial without prior authorization from the BLM engineer.**

**High cave/karst – requires two strings of casing cemented to surface. If lost circulation occurs during drilling of the production hole, contact the BLM prior to cementing that casing.**

**Possible lost circulation in the Grayburg and San Andres formations.**

1. The 8-5/8 inch surface casing shall be set **at approximately 450 feet into the Tansill formation** and cemented to the surface.
  - a. If cement does not circulate to the surface, the appropriate BLM office shall be notified and a temperature survey utilizing an electronic type temperature survey with a surface log readout will be used or a cement bond log shall be run to verify the top of the cement.
  - b. **Wait on cement (WOC) time for a primary cement job is to include the lead cement slurry. This will not apply if submitted cement program is followed.**
  - c. Wait on cement (WOC) time for a remedial job will be a minimum of 4 hours after bringing cement to surface or 500 pounds compressive strength, whichever is greater.
  - d. If cement falls back, remedial cementing will be done prior to drilling out that string.
2. The minimum required fill of cement behind the 5-1/2 inch production casing is:
  - ☒ Cement to surface. If cement does not circulate, contact the appropriate BLM office. **If lost circulation occurs below the surface casing, it may be necessary to modify the cementing program for the production casing to ensure that requirement of two strings cemented to surface occurs across the cave area.**
3. If hardband drill pipe is rotated inside casing, returns will be monitored for metal. If metal is found in samples, drill pipe will be pulled and rubber protectors which have a larger diameter than the tool joints of the drill pipe will be installed prior to continuing drilling operations.

**C. PRESSURE CONTROL**

1. All blowout preventer (BOP) and related equipment (BOPE) shall comply with well control requirements as described in Onshore Oil and Gas Order No. 2 and API RP 53 Sec. 17.
2. Minimum working pressure of the blowout preventer (BOP) and related equipment (BOPE) required for drilling below the surface casing shoe shall be **3000 (3M) psi. System will be tested as 2M.**

3. The appropriate BLM office shall be notified a minimum of 4 hours in advance for a representative to witness the tests.
  - a. The tests shall be done by an independent service company.
  - b. The results of the test shall be reported to the appropriate BLM office.
  - c. All tests are required to be recorded on a calibrated test chart. A copy of the BOP/BOPE test chart and a copy of independent service company test will be submitted to the appropriate BLM office.
  - d. The BOP/BOPE test shall include a low pressure test from 250 to 300 psi. The test will be held for a minimum of 10 minutes if test is done with a test plug and 30 minutes without a test plug.

**D. DRILL STEM TEST**

If drill stem tests are performed, Onshore Order 2.III.D shall be followed.

**Note: Downhole Commingle Order may be required.**

**WWI 111108**

## **VIII. PRODUCTION (POST DRILLING)**

### **A. WELL STRUCTURES & FACILITIES**

#### **Placement of Production Facilities**

Production facilities should be placed on the well pad to allow for maximum interim recontouring and revegetation of the well location.

#### **Containment Structures**

The containment structure shall be constructed to hold the capacity of the entire contents of the largest tank, plus 24 hour production, unless more stringent protective requirements are deemed necessary by the Authorized Officer.

#### **Painting Requirement**

All above-ground structures including meter housing that are not subject to safety requirements shall be painted a flat non-reflective paint color  
Shale Green, Munsell Soil Color Chart # 5Y 4/2

### **B. PIPELINES**

#### **STANDARD STIPULATIONS FOR SURFACE INSTALLED PIPELINES**

**A copy of the APD and attachments, including stipulations, survey plat and/or map, will be on location during construction. BLM personnel may request to you a copy of your permit during construction to ensure compliance with all stipulations.**

Holder agrees to comply with the following stipulations to the satisfaction of the Authorized Officer:

1. The holder shall indemnify the United States against any liability for damage to life or property arising from the occupancy or use of public lands under this grant.
2. The holder shall comply with all applicable Federal laws and regulations existing or hereafter enacted or promulgated. In any event, the holder shall comply with the Toxic Substances Control Act of 1976 as amended, 15 USC 2601 et seq. (1982) with regards to any toxic substances that are used, generated by or stored on the right-of-way or on facilities authorized under this right-of-way grant. (See 40 CFR, Part 702-799 and especially, provisions on polychlorinated biphenyls, 40 CFR 761.1-761.193.) Additionally, any release of toxic substances (leaks, spills, etc.) in excess of the reportable quantity established by 40 CFR, Part 117 shall be reported as required by the Comprehensive Environmental Response, Compensation, and Liability Act, section 102b. A copy of any report required or requested by any Federal agency or State government as a result of a reportable release or spill of any toxic substances shall be furnished to the authorized officer concurrent with the filing of the reports to the involved Federal agency or State government.

3. The holder agrees to indemnify the United States against any liability arising from the release of any hazardous substance or hazardous waste (as these terms are defined in the Comprehensive Environmental Response, Compensation and Liability Act of 1980, 42 U.S.C. 9601, et seq. or the Resource Conservation and Recovery Act, 42 U.S.C. 6901, et seq.) on the Right-of-Way (unless the release or threatened release is wholly unrelated to activity of the Right-of-Way holder's activity on the Right-of-Way), or resulting from the activity of the Right-of-Way holder on the Right-of-Way. This agreement applies without regard to whether a release is caused by the holder, its agent, or unrelated third parties.

4. The holder shall be liable for damage or injury to the United States to the extent provided by 43 CFR Sec. 2883.1-4. The holder shall be held to a standard of strict liability for damage or injury to the United States resulting from pipe rupture, fire, or spills caused or substantially aggravated by any of the following within the right-of-way or permit area:

- a. Activities of the holder including, but not limited to construction, operation, maintenance, and termination of the facility.
- b. Activities of other parties including, but not limited to:
  - (1) Land clearing.
  - (2) Earth-disturbing and earth-moving work.
  - (3) Blasting.
  - (4) Vandalism and sabotage.
- c. Acts of God.

The maximum limitation for such strict liability damages shall not exceed one million dollars (\$1,000,000) for any one event, and any liability in excess of such amount shall be determined by the ordinary rules of negligence of the jurisdiction in which the damage or injury occurred.

This section shall not impose strict liability for damage or injury resulting primarily from an act of war or from the negligent acts or omissions of the United States.

5. If, during any phase of the construction, operation, maintenance, or termination of the pipeline, any oil, salt water, or other pollutant should be discharged from the pipeline system, impacting Federal lands, the control and total removal, disposal, and cleaning up of such oil, salt water, or other pollutant, wherever found, shall be the responsibility of the holder, regardless of fault. Upon failure of the holder to control, dispose of, or clean up such discharge on or affecting Federal lands, or to repair all damages resulting therefrom, on the Federal lands, the Authorized Officer may take such measures as he deems necessary to control and clean up the discharge and restore the area, including, where appropriate, the aquatic environment and fish and wildlife habitats, at the full expense of the holder. Such action by the Authorized Officer shall not relieve the holder

of any responsibility as provided herein.

6. All construction and maintenance activity will be confined to the authorized right-of-way width of 25 feet.

7. No blading or clearing of any vegetation will be allowed unless approved in writing by the Authorized Officer.

8. The holder shall install the pipeline on the surface in such a manner that will minimize suspension of the pipeline across low areas in the terrain. In hummocky or dune areas, the pipeline will be "snaked" around hummocks and dunes rather than suspended across these features.

9. The pipeline shall be buried with a minimum of 24 inches under all roads, "two-tracks," and trails. Burial of the pipe will continue for 20 feet on each side of each crossing. The condition of the road, upon completion of construction, shall be returned to at least its former state with no bumps or dips remaining in the road surface.

10. The holder shall minimize disturbance to existing fences and other improvements on public lands. The holder is required to promptly repair improvements to at least their former state. Functional use of these improvements will be maintained at all times. The holder will contact the owner of any improvements prior to disturbing them. When necessary to pass through a fence line, the fence shall be braced on both sides of the passageway prior to cutting of the fence. No permanent gates will be allowed unless approved by the Authorized Officer.

11. In those areas where erosion control structures are required to stabilize soil conditions, the holder will install such structures as are suitable for the specific soil conditions being encountered and which are in accordance with sound resource management practices.

12. Excluding the pipe, all above-ground structures not subject to safety requirement shall be painted by the holder to blend with the natural color of the landscape. The paint used shall be a color which simulates "Standard Environmental Colors" – **Shale Green**, Munsell Soil Color No. 5Y 4/2; designated by the Rocky Mountain Five State Interagency Committee.

13. The pipeline will be identified by signs at the point of origin and completion of the right-of-way and at all road crossings. At a minimum, signs will state the holder's name, BLM serial number, and the product being transported. Signs will be maintained in a legible condition for the life of the pipeline.

14. The holder shall not use the pipeline route as a road for purposes other than routine maintenance as determined necessary by the Authorized Officer in consultation with the holder. The holder will take whatever steps are necessary to ensure that the pipeline route is not used as a roadway.



15. Any cultural and/or paleontological resource (historic or prehistoric site or object) discovered by the holder, or any person working on his behalf, on public or Federal land shall be immediately reported to the authorized officer. Holder shall suspend all operations in the immediate area of such discovery until written authorization to proceed is issued by the authorized officer. An evaluation of the discovery will be made by the authorized officer to determine appropriate cultural or scientific values. The holder will be responsible for the cost of evaluation and any decision as to proper mitigation measures will be made by the authorized officer after consulting with the holder.

## **IX. INTERIM RECLAMATION & RESERVE PIT CLOSURE**

### **A. INTERIM RECLAMATION**

If the well is a producer, interim reclamation shall be conducted on the well site in accordance with the orders of the Authorized Officer. The operator shall submit a Sundry Notices and Reports on Wells (Notice of Intent), Form 3160-5, prior to conducting interim reclamation.

During the life of the development, all disturbed areas not needed for active support of production operations should undergo interim reclamation in order to minimize the environmental impacts of development on other resources and uses.

The operators should work with BLM surface management specialists to devise the best strategies to reduce the size of the location. Any reductions should allow for remedial well operations, as well as safe and efficient removal of oil and gas.

During reclamation, the removal of caliche is important to increasing the success of revegetating the site. Removed caliche may be used for road repairs, fire walls or for building other roads and locations. In order to operate the well or complete workover operations, it may be necessary to drive, park and operate on restored interim vegetation within the previously disturbed area. Disturbing revegetated areas for production or workover operations will be allowed. If there is significant disturbance and loss of vegetation, the area will need to be revegetated. Communicate with the appropriate BLM office for any exceptions/exemptions if needed.

#### Seed Mixture 4, for Gypsum Sites

The holder shall seed all disturbed areas with the seed mixture listed below. The seed mixture shall be planted in the amounts specified in pounds of pure live seed (PLS)\* per acre. There shall be no primary or secondary noxious weeds in the seed mixture. Seed will be tested and the viability testing of seed will be done in accordance with State law(s) and within nine (9) months prior to purchase. Commercial seed will be either certified or registered seed. The seed container will be tagged in accordance with State law(s) and available for inspection by the authorized officer.

Seed will be planted using a drill equipped with a depth regulator to ensure proper depth of planting where drilling is possible. The seed mixture will be evenly and uniformly planted over the disturbed area (smaller/heavier seeds have a tendency to drop the bottom of the drill and are planted first). The holder shall take appropriate measures to ensure this does not occur. Where drilling is not possible, seed will be broadcast and the area shall be raked or chained to cover the seed. When broadcasting the seed, the pounds per acre are to be doubled. The seeding will be repeated until a satisfactory stand is established as determined by the authorized officer. Evaluation of growth will not be made before completion of at least one full growing season after seeding.

Species to be planted in pounds of pure live seed\* per acre:

<u>Species</u>	<u>lb/acre</u>
Alkali Sacaton ( <i>Sporobolus airoides</i> )	1.0
DWS Four-wing saltbush ( <i>Atriplex canescens</i> )	5.0

DWS: DeWinged Seed

\*Pounds of pure live seed:

Pounds of seed x percent purity x percent germination = pounds pure live seed  
(Insert Seed Mixture Here)

## **X. FINAL ABANDONMENT & REHABILITATION REQUIREMENTS**

Upon abandonment of the well and/or when the access road is no longer in service the Authorized Officer shall issue instructions and/or orders for surface reclamation and restoration of all disturbed areas.

On private surface/federal mineral estate land the reclamation procedures on the road and well pad shall be accomplished in accordance with the private surface land owner agreement.