

District I
PO Box 1980, Hobbs, NM 88241-1980

District II
811 South First, Artesia, NM 88210

District III
1000 Rio Brazos Rd., Aztec, NM 87410

District IV
2040 South Pacheco, Santa Fe, NM 87505

State of New Mexico
Energy, Minerals & Natural Resources Department

OIL CONSERVATION DIVISION
2040 South Pacheco
Santa Fe, NM 87505

Form C-101

Revised October 18, 1994

Instructions on back

Submit to Appropriate District Office

State Lease - 6 Copies

Fee Lease - 5 Copies

☐ AMENDED REPORT

APPLICATION FOR PERMIT TO DRILL, RE-ENTER, DEEPEN, PLUGBACK, OR ADD A ZONE

| | | |
|--|---|---------------------------------|
| Operator Name and Address Mewbourne Oil Company PO Box 5270 Hobbs, N.M. 88241 | | 2 OGRID Number 14744 |
| DEC - 2 2003 OCD-ARTESIA | | 3 API Number 30 - 0 15-33122 |
| 4 Property Code | 5 Property Name West Malaga 12 State Com | 6 Well No. 1 |

Surface Location

| UL or lot no. | Section | Township | Range | Lot Idn | Feet from the | North/South line | Feet from the | East/West Line | County |
|---------------|---------|----------|-------|---------|---------------|------------------|---------------|----------------|--------|
| A | 12 | 24S | 27E | | 660 | North | 660 | East | Eddy |

Proposed Bottom Hole Location If Different From Surface

| UL or lot no. | Section | Township | Range | Lot Idn | Feet from the | North/South line | Feet from the | East/West Line | County |
|---------------------------------------|---------|----------|-------|---------|-----------------|------------------|---------------|----------------|--------|
| Proposed Pool 1 Black River Morrow | | | | | Proposed Pool 2 | | | | |

| | | | | |
|------------------------|----------------------------|------------------------|-------------------------|-----------------------------------|
| 11 Work Type Code N | 12 Well Type Code G | 13 Cable/Rotary R | 14 Lease Type Code S | 15 Ground Level Elevation 3097 |
| 16 Multiple | 17 Proposed Depth 12900 | 18 Formation Morrow | 19 Contractor TBA | 20 Spud Date 12-05-03 |

Proposed Casing and Cement Program

| Hole Size | Casing Size | Casing weight/foot | Setting Depth | Sacks of Cement | Estimated TOC |
|-----------|-------------|--------------------|---------------|-----------------|---------------|
| 17 1/2" | 13 3/8" | 48 | 500 | 500 | Surface |
| 12 1/4" | 9 5/8" | 40 | 4300 | 1500 | Surface |
| 8 3/4" | 5 1/2" | 17 | 12900 | 800 | Top of WC |
| | | | | | |
| | | | | | |

22 Describe the proposed program. If this application is to DEEPEN or PLUG BACK give the data on the present productive zone and proposed new productive zone. Describe the blowout prevention program, if any. Use additional sheets if necessary.

BOP Program: 2K Hydril (Exhibit #2) from surface casing to intermediate TD. Schaffer LWS or equivalent (Double-Ram-Hydraulic). 1500 series with Hydril 900 series (Exhibit #2A) from intermediate casing to TD. Rotating Head, PVT, Flow Monitor & Gas Separator will be installed before Wolfcamp. MOC has researched this area & H2S does not seem to be a problem. MOC will install H2S monitors before the Delaware.

Mud Program: 0-500'.. Fresh Water & Spud Mud.
500-4300'..FW mud. Then go to add brine before the salt. Sweeps as needed.
4300-12900'..9.3-9.7#/#g Cut Brine. WL & Viscosity increase as needed.

23 I hereby certify that the information given above is true and complete to the best of my knowledge and belief.

Signature:

Printed name: N.M. Young

Title: District Manager

OIL CONSERVATION DIVISION

Approved By:

Title:

Approval Date: DEC 02 2003

Expiration Date: DEC 02 2004

Cement to cover all oil, gas and
water bearing zones.

DISTRICT I

1825 N. French Dr., Hobbs, NM 88240

DISTRICT II

811 South First, Artesia, NM 88210

DISTRICT III

1000 Rio Brazos Rd., Aztec, NM 87410

DISTRICT IV

2040 South Pacheco, Santa Fe, NM 87505

State of New Mexico

Energy, Minerals and Natural Resources Department

Form C-102

Revised March 17, 1999

Submit to Appropriate District Office

State Lease - 4 Copies

Fee Lease - 3 Copies

OIL CONSERVATION DIVISION

2040 South Pacheco

Santa Fe, New Mexico 87504-2088

☐ AMENDED REPORT

WELL LOCATION AND ACREAGE DEDICATION PLAT

| | | |
|--------------------|---|---------------------------------|
| API Number | Pool Code | Pool Name Black River Morrow |
| Property Code | Property Name WEST MALAGA "12" STATE | Well Number 1 |
| OGRID No. 14744 | Operator Name MEWBOURNE OIL COMPANY | Elevation 3097' |

Surface Location

| UL or lot No. | Section | Township | Range | Lot Idn | Feet from the | North/South line | Feet from the | East/West line | County |
|---------------|---------|----------|-------|---------|---------------|------------------|---------------|----------------|--------|
| A | 12 | 24 S | 27 E | | 660 | NORTH | 660 | EAST | EDDY |

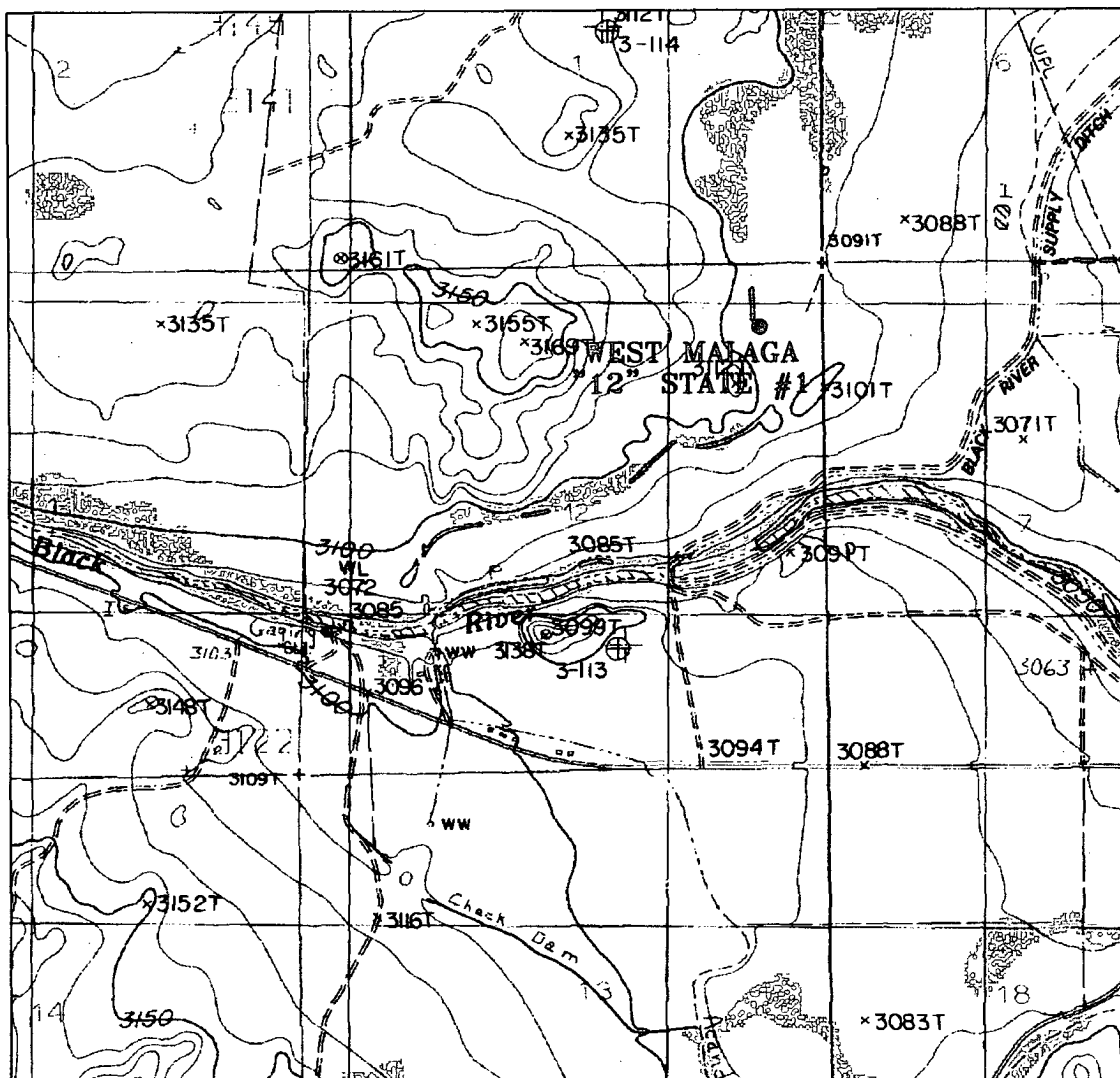
Bottom Hole Location If Different From Surface

| UL or lot No. | Section | Township | Range | Lot Idn | Feet from the | North/South line | Feet from the | East/West line | County |
|---------------|---------|----------|-------|---------|---------------|------------------|---------------|----------------|--------|
| | | | | | | | | | |

| | | | |
|------------------------|-----------------|--------------------|-----------|
| Dedicated Acres 320 | Joint or Infill | Consolidation Code | Order No. |
|------------------------|-----------------|--------------------|-----------|

NO ALLOWABLE WILL BE ASSIGNED TO THIS COMPLETION UNTIL ALL INTERESTS HAVE BEEN CONSOLIDATED
OR A NON-STANDARD UNIT HAS BEEN APPROVED BY THE DIVISION

| | |
|--|---|
| | OPERATOR CERTIFICATION I hereby certify the the information contained herein is true and complete to the best of my knowledge and belief. Signature <u>N.M. Young</u> Printed Name <u>N.M. Young</u> Title <u>District Manager</u> Date <u>11/25/03</u> |
| | SURVEYOR CERTIFICATION I hereby certify that the well location shown on this plat was plotted from field notes of actual surveys made by me or under my supervision, and that the same is true and correct to the best of my belief. Date Surveyed <u>NOVEMBER 5, 2003</u> Signature & Seal of Professional Surveyor <u>[Signature]</u> W.D. No. <u>3763</u> Certificate No. <u>Gary L. Jones 7977</u> BASIN SURVEYS |



WEST MALAGA "12" STATE #1
 Located 660' FNL and 660' FEL
 Section 12, Township 24 South, Range 27 East,
 N.M.P.M., Eddy County, New Mexico.

basin
surveys
 focused on excellence
 in the oilfield

P.O. Box 1786
 1120 N. West County Rd.
 Hobbs, New Mexico 88241
 (505) 393-7316 - Office
 (505) 392-3074 - Fax
 basinsurveys.com

W.O. Number: 3763AA - KJG #7

Survey Date: 11-06-2003

Scale: 1" = 2000'

Date: 11-07-2003

MEWBOURNE
OIL CO.

Mewbourne Oil Company
BOP Schematic for
12 1/4" Hole

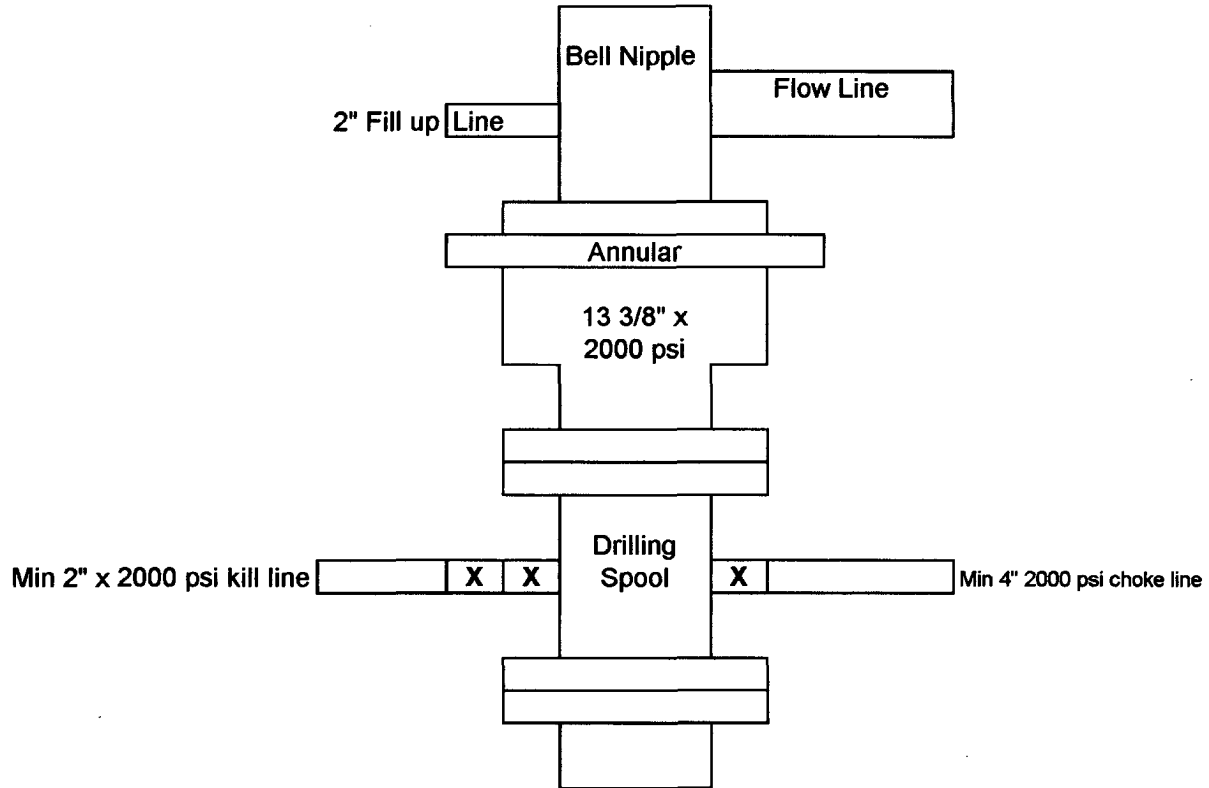


Exhibit #2

West Malaga 12 State Com #1
660' FNL & 660' FEL
Sec. 12 T-24S R-27E
Eddy, County New Mexico

Mewbourne Oil Company
 BOP Schematic for
 8 3/4" or 7 7/8" Hole

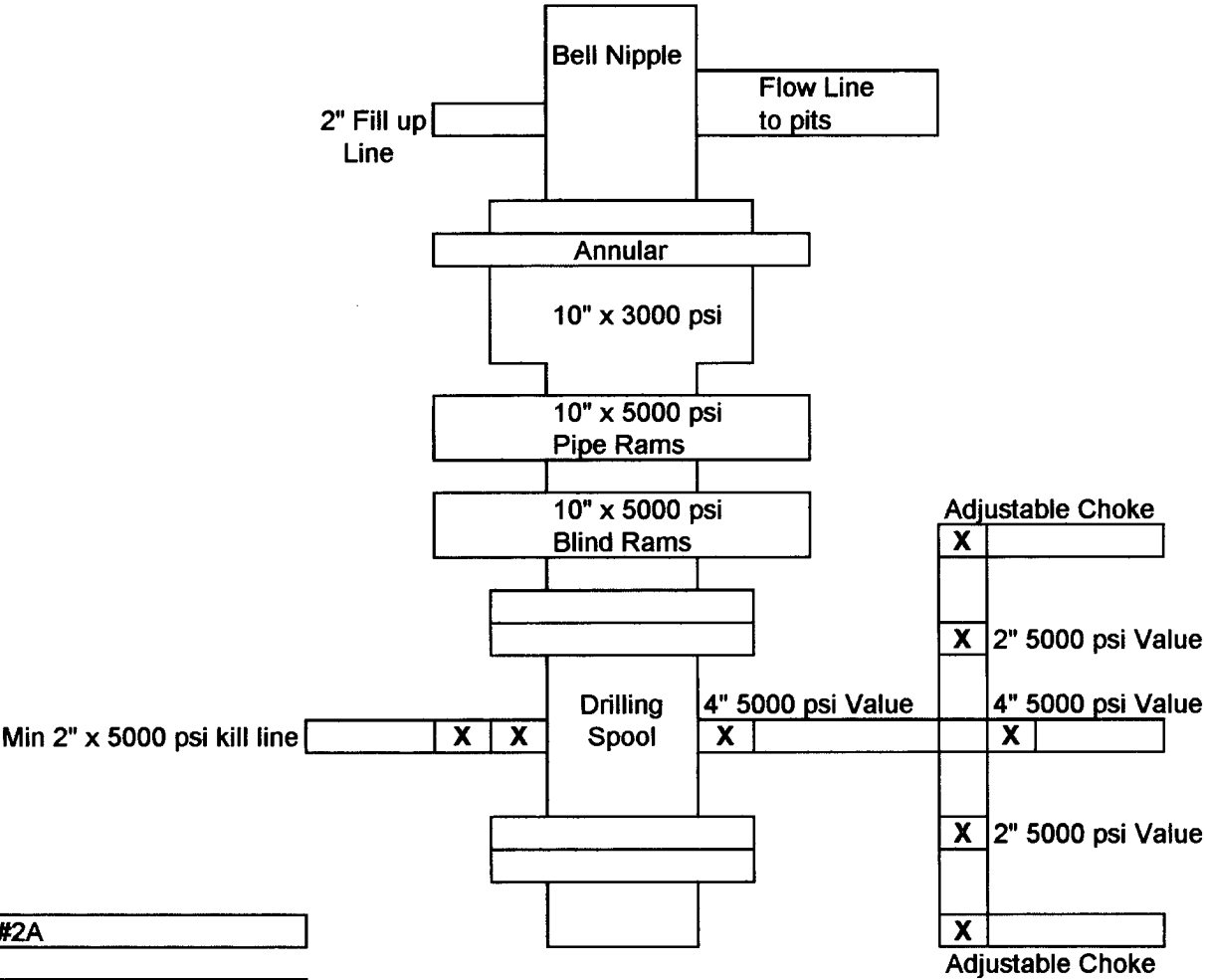


Exhibit #2A

West Malaga 12 State Com #1
 660' FNL & 660' FEL
 Sec. 12 T-24S R-27E
 Eddy, County New Mexico