

Submit 3 Copies To Appropriate District
Office
District I
1625 N. French Dr., Hobbs, NM 87240
District II
811 South First, Artesia, NM 87210
District III
1000 Rio Brazos Rd., Aztec, NM 87410
District IV
2040 South Pacheco, Santa Fe, NM 87505

State of New Mexico
Energy, Minerals and Natural Resources
OIL CONSERVATION DIVISION
2040 South Pacheco
Santa Fe, NM 87505

Form C-103
Revised March 25, 1999

SUNDRY NOTICES AND REPORTS ON WELLS (DO NOT USE THIS FORM FOR PROPOSALS TO DRILL OR TO DEEPEN OR PLUG BACK TO A DIFFERENT RESERVOIR. USE "APPLICATION FOR PERMIT" (FORM C-101) FOR SUCH PROPOSALS.)		WELL API NO. 30-015-21817
1. Type of Well: Oil Well <input type="checkbox"/> Gas Well <input checked="" type="checkbox"/> Other		5. Indicate Type of Lease STATE <input checked="" type="checkbox"/> FEE <input type="checkbox"/>
2. Name of Operator Fasken Oil and Ranch, Ltd.		6. State Oil & Gas Lease No. L-4757
3. Address of Operator 303 W. Wall Ave., Suite 1800, Midland, TX 79701-5116		7. Lease Name or Unit Agreement Name: Howell State Com.
4. Well Location Unit Letter <u>L</u> : <u>1980</u> feet from the <u>South</u> line and <u>660</u> feet from the <u>West</u> line Section <u>32</u> Township <u>20S</u> Range <u>25E</u> NMPM County <u>Eddy</u>		8. Well No. 1
10. Elevation (Show whether DR, RKB, RT, GR, etc.) 3677.5" GR		9. Pool name or Wildcat Cemetery (Morrow)

11. Check Appropriate Box to Indicate Nature of Notice, Report or Other Data

NOTICE OF INTENTION TO:

PERFORM REMEDIAL WORK ☐ PLUG AND ABANDON ☒
TEMPORARILY ABANDON ☐ CHANGE PLANS ☐
PULL OR ALTER CASING ☐ MULTIPLE COMPLETION ☐
OTHER: ☐

SUBSEQUENT REPORT OF:

REMEDIAL WORK ☐ ALTERING CASING ☐
COMMENCE DRILLING OPNS. ☐ PLUG AND ABANDONMENT ☐
CASING TEST AND CEMENT JOB ☐
OTHER: ☐

12. Describe proposed or completed operations. (Clearly state all pertinent details, and give pertinent dates, including estimated date of starting any proposed work). SEE RULE 1103. For Multiple Completions: Attach wellbore diagram of proposed completion or recompilation.

Fasken Oil and Ranch, Ltd. proposes to plug and abandon the Howell State Com. No. 1. Please see the attached procedure and wellbore schematics for details.

I hereby certify that the information above is true and complete to the best of my knowledge and belief.

SIGNATURE Jimmy D. Carlile TITLE Regulatory Affairs Coordinator DATE 12/1/03

Type or print name Jimmy D. Carlile jimmyc@forl.com Telephone No. (432) 687-1777
(This space for State use)

APPROVED BY [Signature] TITLE Field Rep DATE 12/1/03
Conditions of approval, if any:

APPROVED DEC 4 2003

**Howell State Com No. 1
Workover Procedure
AFE 760**

Fasken Oil & Ranch, Ltd. ----- Howell State Com. No. 1 ----- Cemetery (Wolfcamp) Field

Surface Location: 1980' FSL & 660' FWL Sec 32, T20S, R25E, Eddy Co., NM

Objective: Plug and Abandon

KB: 16' above GL

Completed: 7-18-76

TD: 9900'

PBTD: 9335' (CIBP @ 9370' w/35' cmt)

Casing:

13-3/8" @ 261' w/200 sx, Circ 75sx to surf.

8-5/8" @ 3001' w/900 sx lite+200 sx "C"+3yds ready mix. TOC surf.

4-1/2" 11.6#/ft @ 9798' w/775sx "C", TOC 6800' by Temp.

Perfs: Original 2JSPF 9422-32' (20 holes by 1-11/16" OD carrier).

Mar 1990 perfed 9502'-08', 9512'-17', 9641'-9652' (2JSPF by 1-11/16" OD carrier).

Sep 1997 reperf 1JSPF 9422-32', 9502'-08', 9512'-17', 9641'-9652' (by 1-11/16" gun).

Aug 2002 6988'-6998' (11h), 7066'-7082' (17h)

Packer: 4-1/2" Arrowdrill permanent packer and set @ 9460', 2-3/8" x 10' EUE 8rd N-80 sub, 1.781" "R" profile nipple (blanking plug in place), wireline entry guide.

Packer: Arrowset I 10k packer w/ wireline entry guide @ 6934.84' w/TOSSD w/1.875" "F" frac hardened profile. Bottom string @ 9364.46'

Tubing: 223 jts 2-3/8" EUE N-80 tubing.

Workover: Aug 2002, perfd Wolfcamp and acidized, no success

1. RUPU and plugging equipment.
2. Receive 2400' 2-3/8" EUE 8rd N-80 workstring tubing.
3. Kill well with 35 bbls brine water.
4. ND x-mas tree, install BOP.
5. Dig earth work pit, line and fence. Blow down tubing, tubing/casing annulus and 8-5/8"x4-1/2" annulus.
6. Release packer and RIW w/2-3/8" 8rd EUE N-80 tubing and 4-1/2" X 2-3/8" Arrowset I 10K packer to PBTD 9335'.
7. Circulate well with 130 bbls mud laden fluid.
8. POW with 2-3/8" EUE 8rd N-80 and packer. Lay down approximately 2400' of 2-3/8" EUE 8rd N-80 workstring tubing. Dope pin end of tubing and install thread protectors before laying down.
9. Pick up 4-1/2" spear and free-point 4-1/2" casing using stretch measurements. Install 10" BOP with 4-1/2" and blind rams.
10. RUWL and cut-off casing at free point with jet cutter or collar splitter at +/-6800'.

11. POW and lay down 4-1/2" casing. Install pin protectors prior to laying down casing.
12. RIW with 2-3/8" tubing to 75' below 4-1/2" cut-off and spot 40 sx Class "H" cement (s.w 16.4 ppg, yield 1.06 cuft/sx, assumed 9" hole). — TA9
13. Spot 35 sx Class "C" cement (s.w. 14.8 ppg, yield 1.32 cuft/sx,) at 6521'-6421' (6421'-6521', 100' above Wolfcamp top at 6521', estimated 9" hole). — 100' Plug @ 4400' - 4300'
14. Spot 30 sx Class "C" cement (s.w. 14.8 ppg, yield 1.32 cuft/sx) at 3051' (2951'-3050' 8-5/8" shoe plug). — TA9
15. Spot 27 sx Class "C" cement (s.w. 14.8 ppg, yield 1.32 cuft/sx) at 2558' (2458'-2558', 100' above Glorieta top at 2508').
16. Spot 27 sx Class "C" cement (s.w. 14.8 ppg, yield 1.32 cuft/sx) at 832' (732'-832', 100' above San Andres top at 832').
17. Spot 27 sx Class "C" cement (s.w. 14.8 ppg, yield 1.32 cuft/sx) at 311' (211'-311', 50' above and below 13-3/8" casing). — TA9
18. Spot 14 sx Class "C" cement (s.w. 14.8 ppg, yield 1.32 cuft/sx) at ^{60'}~~50'~~, surface plug. — WOC - 24 HR
TA9
19. Cut-off casing 3' below ground level. Cap with 1/4" plate and install 2000# 1" ball valve. Install 4" OD marker extending 4' above ground level with following data: Howell State Com No. 1, Unit L, 1980' FSL & 660' FWL, Sec 32, T-20-S, R-25-E, Eddy Co., NM.
20. RDPU. Remove anchors, empty and backfill working pit, clean and level location.

Howell State Com No. 1

GL: 3677.5'

KB: 3693.5'

Operator: Fasken Oil and Ranch, Ltd.

Location: 1980' FSL and 660' FWL
Sec 32, T20S, R25E
Eddy County, NM

Compl.: 7/18/1976

API #: 30-015-21817

TD: 9900'

PBTD: 9,335' (CIBP@9370' w/35' cmt)
9740' FC

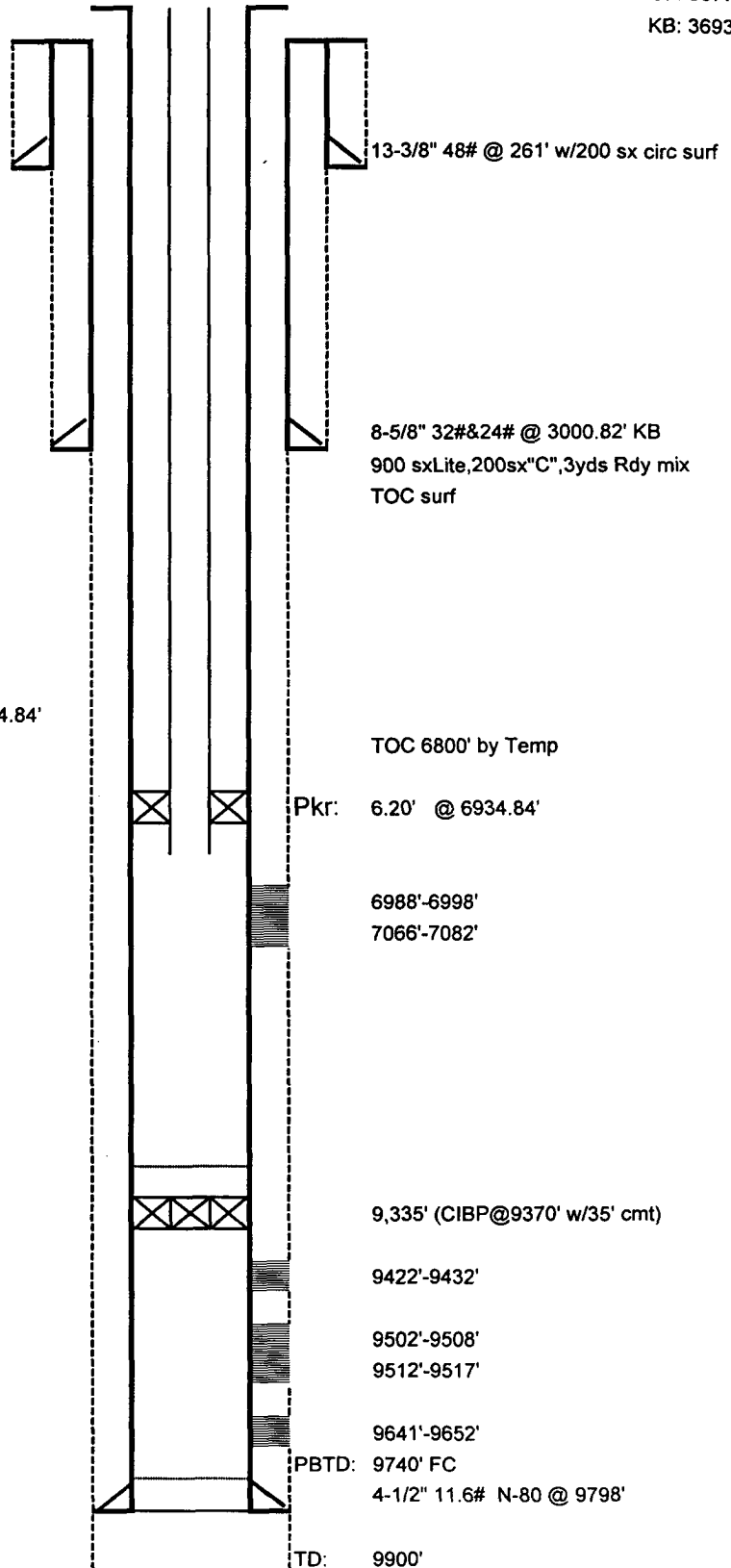
Casing: 13-3/8" 48# @ 261' w/200 sx circ surf
8-5/8" 32#&24# @ 3000.82' KB
900 sxLite,200sx"C",3yds Rdy mix
TOC surf
4-1/2" 11.6# N-80 @ 9798'
775 sx "C"
TOC 6800' by Temp

Tubing: 1- 2-3/8" WL entry guide 0.43'
Pkr: 1- 2-3/8"x4-1/2" Arrowset 1X 10K Pkr 6.20' @ 6934.84'
1-TOSSD w/ 1.875" "F" Frac Hardened P 1.71'
223 jts- 2-3/8" EUE 8rd N-80 Tubing 6910.50'
Below KB +15.00'
Slack off -3.50'
EOT 6931.34'

Perfs: Morrow Wolfcamp
9422'-9432' 6988'-6998'
9502'-9508' 7066'-7082'
9512'-9517'
9641'-9652'

Hole Sizes 17-1/2" 261'
12-1/4" 3001'
7-7/8" 9900'

Currently Shut-in



as of 8-19-02

Howell State Com No. 1

GL: 3677.5'

KB: 3693.5'

Operator: Fasken Oil and Ranch, Ltd.

Location: 1980' FSL and 660' FWL
Sec 32, T20S, R25E
Eddy County, NM

Compl.: 7/18/1976

API #: 30-015-21817

TD: 9900'

PBTD: 9,335' (CIBP@9370' w/35' cmt)
9740' FC

Casing: 13-3/8" 48# @ 261' w/200 sx circ surf
8-5/8" 32#&24# @ 3000.82' KB
900 sxLite,200sx"C",3yds Rdy mix
TOC surf
4-1/2" 11.6# N-80 @ 9798'
775 sx "C"
TOC 6800' by Temp

Tubing:
Pkr:

Perfs: Morrow Wolfcamp
9422'-9432' 6988'-6998'
9502'-9508' 7066'-7082'
9512'-9517'
9641'-9652'

Hole Sizes 12-1/4" 2410'
8-3/4" 9,875'

Currently Shut-in

Tops
Grybrg142'

San A. 832'

Glorieta 2508'

Bone Springs 3430'

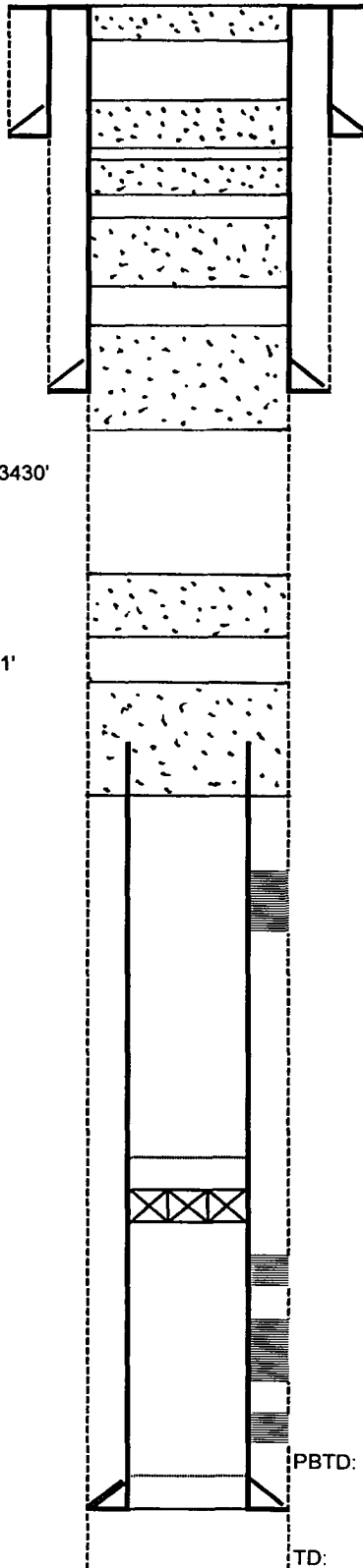
Wolfcamp 6521'

Canyon 8146'

Atoka 9020'

Morrow 9415'

Barnett 9692'



50' surf plug

13-3/8" 48# @ 261' w/200 sx circ surf

13-3/8" shoe plug 211-311'

San Andres plug 732'-832'

Glorieta plug 2358'-2458'

8-5/8" 32#&24# @ 3000.82' KB

900 sxLite,200sx"C",3yds Rdy mix

TOC surf

8-5/8" Shoe plug 2951'-3051'

(50' in and 50' out)

Wolfcamp plug 6421'-6521'

TOC 6800' by Temp

Stub plug

50' in & 50' out of 4-1/2"

6988'-6998'

7066'-7082'

9,335' (CIBP@9370' w/35' cmt)

9422'-9432'

9502'-9508'

9512'-9517'

9641'-9652'

PBTD: 9740' FC

4-1/2" 11.6# N-80 @ 9798'

TD: 9900'

as of 2-11-03

"Plugged and Abandoned"

cwb

12/1/2003

HowSt1 wb diagram.xls