

N.M. DIV-Dist. 2
1301 W. Grand Avenue
Artesia NM 88210
UNITED STATES DEPARTMENT OF THE INTERIOR
BUREAU OF LAND MANAGEMENT

Form approved.
Budget Bureau No. 1004-0137
Expires August 31, 1985

WELL COMPLETION OR RECOMPLETION REPORT AND LOG *

1a. TYPE OF WELL: OIL WELL ☒ GAS WELL ☐ DRY ☐ Other _____
b. TYPE OF COMPLETION: NEW WELL ☒ WORK OVER ☐ DEEP-EN ☐ PLUG BACK ☐ DIFF. RESVR. ☐ Other _____

2. NAME OF OPERATOR
BURNETT OIL CO., INC. 817/332-5108 DEC - 4 2003

3. ADDRESS OF OPERATOR
BURNETT PLAZA SUITE 1500
801 CHERRY STREET UNIT #9 FORT WORTH, TX 76102-6881

4. LOCATION OF WELL (Report location clearly and in accordance with any State requirements)*
At surface UNIT J., 2310' FSL, 2310' FEL
At top prod. interval reported below SAME AS SURFACE
At total depth SAME AS SURFACE

14. PERMIT NO. 3160-3
DATE ISSUED 3/24/2003

15. DATE SPUDDED 6/17/03
16. DATE T.D. REACHED 6/27/03
17. DATE COMPL. (Ready to prod.) 7/14/03
18. ELEVATIONS (DF, RKB, RT, GR, ETC.)* 3696' GR
19. ELEV. CASINGHEAD

20. TOTAL DEPTH, MD & TVD 5115'
21. PLUG, BACK T.D., MD & TVD
22. IF MULTIPLE COMPL., HOW MANY*
23. INTERVALS DRILLED BY
ROTARY TOOLS X
CABLE TOOLS

24. PRODUCING INTERVAL(S), OF THIS COMPLETION—TOP, BOTTOM, NAME (MD AND TVD)*
4490'-4816' CEDAR LAKE YESO
25. WAS DIRECTIONAL SURVEY MADE NO

26. TYPE ELECTRIC AND OTHER LOGS RUN
DLL/GRL,COMP Z-DSL/CNL,DIG SPECTRAL GRL
27. WAS WELL CORED NO

28. CASING RECORD (Report all strings set in well)					
CASING SIZE	WEIGHT, LB./FT.	DEPTH SET (MD)	HOLE SIZE	CEMENTING RECORD	AMOUNT PULLED
8-5/8"	24#	505'	12-1/4"	150 sks CI" H" w/10% Thix., 495 sks. CI "C" +	30 Yds Redi-mix.
5-1/2"	15.50#	5114'	7-7/8"	2615 sks. 50-50 CL"C" & POZ. In 2 stages	

29. LINER RECORD					30. TUBING RECORD		
SIZE	TOP (MD)	BOTTOM (MD)	SACKS CEMENT*	SCREEN (MD)	SIZE	DEPTH SET (MD)	PACKER SET (MD)
					2-7/8"	4906'	

31. PERFORATION RECORD (Interval, size and number)		32. ACID, SHOT, FRACTURE, CEMENT SQUEEZE, ETC.	
4490'-4816' Total 22 holes @ 2 SPF.		DEPTH INTERVAL (MD)	AMOUNT AND KIND OF MATERIAL USED
		4490'-4816'	1,975 Gals 15% HCL Acid
		4490'-4816'	36000 Gals 20% Hot HCL w/55,000 Gals WF "G"
		40# gel w/51 sks 100 mesh sand	
		4490'-4816'	5,000 Gals 15% HCL Acid

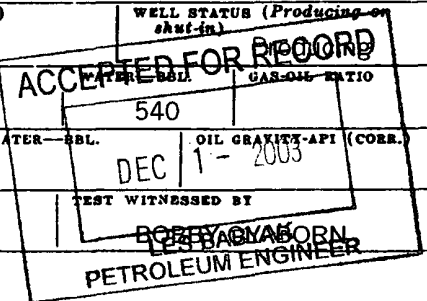
33.* PRODUCTION							
DATE FIRST PRODUCTION 7/14/03		PRODUCTION METHOD (Flowing, gas lift, pumping—size and type of pump) Pumping 25 x 20 x 20 RWTC				WELL STATUS (Producing or shut-in)	
DATE OF TEST 7/16/03	HOURS TESTED 24	CHOKE SIZE	PROD'N. FOR TEST PERIOD	OIL—BBL. 194	GAS—MCF. 160	WATER—BBL. 540	GAS-OIL RATIO
FLOW. TUBING PRESS.	CASING PRESSURE	CALCULATED 24-HOUR RATE	OIL—BBL.	GAS—MCF.	WATER—BBL.	OIL GRAVITY-API (CORR.)	

34. DISPOSITION OF GAS (Sold, used for fuel, vented, etc.)
SOLD TO FRONTIER, INC. THROUGH Gissler A2 BATTERY.

35. LIST OF ATTACHMENTS
DLL/GRL,COMP Z-DSL/CNL,DIG SPECTRAL GRL

36. I hereby certify that the foregoing and attached information is complete and correct as determined from all available records
SIGNED Stefany Sanchez TITLE PETROLEUM ENGINEER DATE 11/14/2003

* (See Instructions and Spaces for Additional Data on Reverse Side)



37. SUMMARY OF POROUS ZONES: (Show all important zones of porosity and contents thereof; cored intervals; and all drill-stem, tests, including depth interval tested, cushion used, time tool open, flowing and shut-in pressures, and recoveries):

38.

GEOLOGIC MARKERS

FORMATION	TOP	BOTTOM	DESCRIPTION, CONTENTS, ETC.	NAME	TOP	
					MEAS. DEPTH	TRUE VERT. DEPTH
				ALLUVIUM	SURFACE	
				ANHYDRITE	210'	
				SALT	418'	
				BASE SALT	1158'	
				SEVEN RIVERS	1604'	
				QUEEN	2222'	
				GRAYBURG	2628'	
				SAN ANDRES	2975'	
				YESO	4470'	