

District I  
1625 N. French Dr., Hobbs, NM 88240  
District II  
1301 W. Grand Avenue, Artesia, NM 88210  
District III  
1000 Rio Brazos Road, Aztec, NM 87410  
District IV  
1220 S. St. Francis Dr., Santa Fe, NM 87505

Energy Minerals and Natural Resources

Oil Conservation Division  
1220 South St. Francis Dr.  
Santa Fe, NM 87505

Form C-101  
Revised March 17, 1999

RECEIVED Submit to appropriate District Office  
NOV - 7 2003 State Lease - 6 Copies  
Fee Lease - 5 Copies

OCD-ARTESIA ☐ AMENDED REPORT

APPLICATION FOR PERMIT TO DRILL, RE-ENTER, DEEPEN, PLUGBACK, OR ADD A ZONE

<sup>1</sup> Operator Name and Address UNIT PETROLEUM COMPANY P.O. BOX 702500 TULSA, OKLAHOMA 74170		<sup>2</sup> OGRID Number 115970
<sup>3</sup> Property Code		<sup>3</sup> API Number 30 - 015 - 33147
<sup>3</sup> Property Name CARLSBAD		<sup>4</sup> Well No. 1

<sup>7</sup> Surface Location

UL or lot no.	Section	Township	Range	Lot Idn	Feet from the	North/South line	Feet from the	East/West line	County
A	32	22S	28E		660	NORTH	660'	EAST	EDDY CO.

<sup>8</sup> Proposed Bottom Hole Location If Different From Surface

UL or lot no.	Section	Township	Range	Lot Idn	Feet from the	North/South line	Feet from the	East/West line	County

<sup>9</sup> Proposed Pool 1 DUBLIN RANCH - MORROW (76140)	<sup>10</sup> Proposed Pool 2
---	-------------------------------

<sup>11</sup> Work Type Code N	<sup>12</sup> Well Type Code G	<sup>13</sup> Cable/Rotary ROTARY	<sup>14</sup> Lease Type Code P	<sup>15</sup> Ground Level Elevation 3019'
<sup>16</sup> Multiple NO	<sup>17</sup> Proposed Depth 12,750'	<sup>18</sup> Formation MORROW	<sup>19</sup> Contractor UNKNOWN	<sup>20</sup> Spud Date WHEN APPROVED

<sup>21</sup> Proposed Casing and Cement Program

Hole Size	Casing Size	Casing weight/foot	Setting Depth	Sacks of Cement	Estimated TOC
25"	20"	Conductor	40'	Redi-mix	Surface
17½"	13 3/8"	48#	400'	450 Sx.	Surface
12½"	9 5/8"	36 & 40	2650'	900 Sx.	Surface
8 3/4"	7"	26	10,700'	300 Sx.	Est TOC 9000'
6 1/8"	4½"	13.5	Liner TD-10500'	310 Sx.	Top of liner

<sup>22</sup> Describe the proposed program. If this application is to DEEPEN or PLUG BACK, give the data on the present productive zone and proposed new productive zone.

Describe the blowout prevention program, if any. Use additional sheets if necessary.

1. Drill 25" hole to 40'. Set 40' of 20" conductor pipe & cement to surface with Redi-mix.
2. Drill 17½" hole to 400'. Run and set 400' of 13 3/8" 48# H-40 ST&C casing. Cement with 450 Sx. of Class "C" cement + 2% CaCl<sub>2</sub> + ½# Flocele/Sx. circulate cement.
3. Drill 12½" hole to 2650'. Run and set 9 5/8" casing as follows: 2530' of 9 5/8" 36# J-55 ST&C, 120' of 9 5/8" 40# N-80 LT&C casing. Cement with 900 Sx. of Class "C" Cement + additives, circulate cement to surface.
4. Drill 8 3/4" hole to 10,700'. Run and set 10,700' of 7" 26# HCP-110 LT&C casing. cement witu 300 Sx. of Class "H" cement + additives, estimate TOC 9000'
5. Drill 6 1/8" hole to 12,750'. Run and set a 2250' 4½" 13.5# P-110 LT&C liner, top of liner 10,500'. Cement with 310 Sx. of Class "H" cement + additives, top of cement at top of liner.

<sup>23</sup> I hereby certify that the information given above is true and complete to the best of my knowledge and belief.

Signature:

Printed name:

Title: Agent

Date: 11/04/03

Phone: 505 331 8500

OIL CONSERVATION DIVISION  
ORIGINAL SIGNED BY TIM W. RUM  
DISTRICT II SUPERVISOR

Approved by:

Title:

Approval Date: DEC 21 2003

Expiration Date:

DEC 21 2004

Conditions of Approval:

## State of New Mexico

## DISTRICT I

P.O. Box 1980, Hobbs, NM 88241-1980

Energy, Minerals and Natural Resources Department

Form C-102

Revised February 10, 1994

Submit to Appropriate District Office

State Lease - 4 Copies

Fee Lease - 3 Copies

## DISTRICT II

P.O. Drawer DD, Artesia, NM 88211-0719

## OIL CONSERVATION DIVISION

P.O. Box 2088

Santa Fe, New Mexico 87504-2088

## DISTRICT III

1000 Rio Brazos Rd., Aztec, NM 87410

## DISTRICT IV

P.O. BOX 2088, SANTA FE, N.M. 87504-2088

## WELL LOCATION AND ACREAGE DEDICATION PLAT

☐ AMENDED REPORT

API Number	Pool Code 76140	Pool Name DUBLIN RANCH-MORROW
Property Code	Property Name CARLSBAD	Well Number 1
OGRID No. 115970	Operator Name UNIT PETROLEUM COMPANY	Elevation 3019'

## Surface Location

UL or lot No.	Section	Township	Range	Lot Idn	Feet from the	North/South line	Feet from the	East/West line	County
A	32	22-S	28-E		660'	NORTH	660'	EAST	EDDY

## Bottom Hole Location If Different From Surface

UL or lot No.	Section	Township	Range	Lot Idn	Feet from the	North/South line	Feet from the	East/West line	County

Dedicated Acres 320	Joint or Infill	Consolidation Code	Order No.
------------------------	-----------------	--------------------	-----------

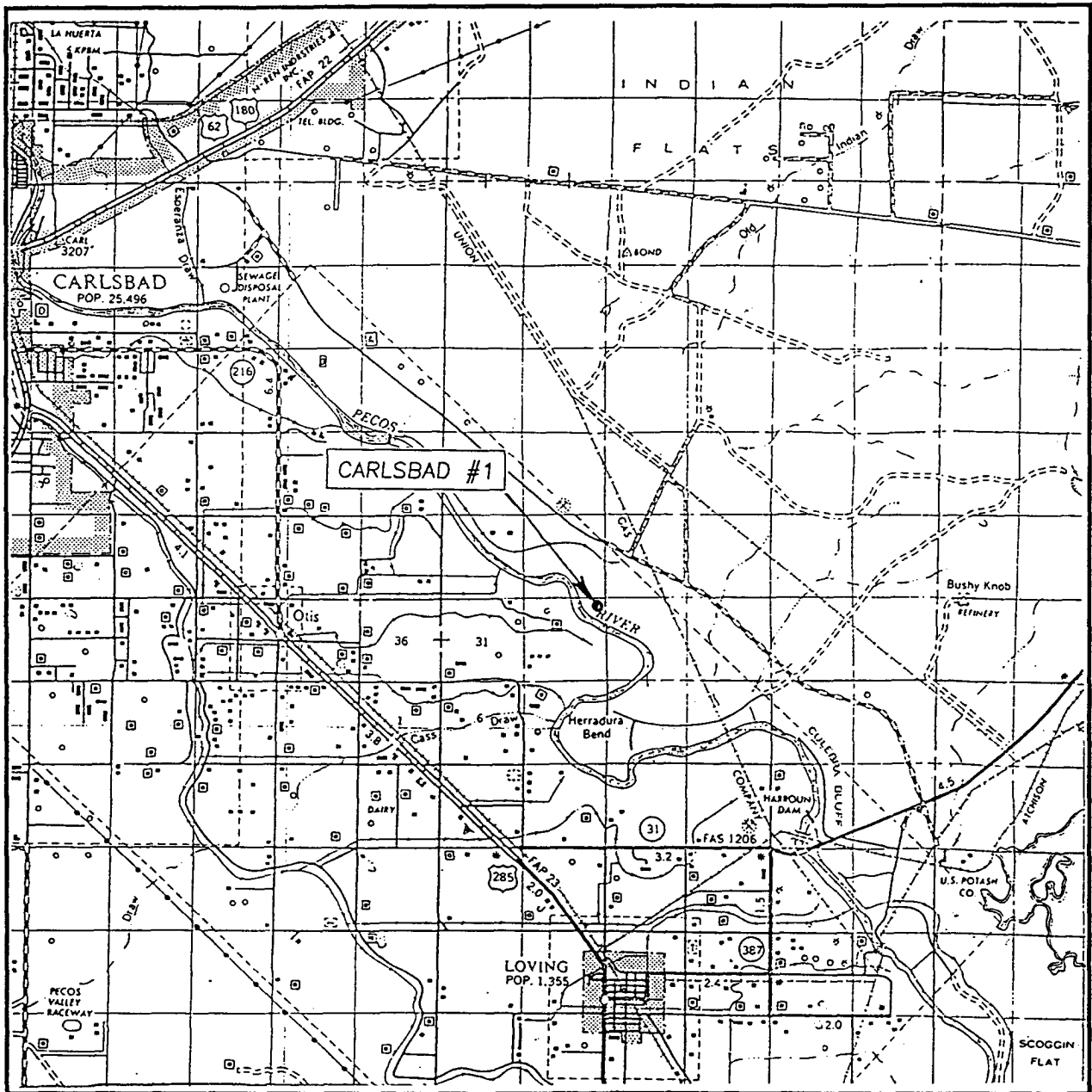
NO ALLOWABLE WILL BE ASSIGNED TO THIS COMPLETION UNTIL ALL INTERESTS HAVE BEEN CONSOLIDATED  
OR A NON-STANDARD UNIT HAS BEEN APPROVED BY THE DIVISION

	<b>OPERATOR CERTIFICATION</b>  I hereby certify the information contained herein is true and complete to the best of my knowledge and belief.  <i>Joe T. Janica</i> Signature  Joe T. Janica Printed Name  Agent Title 11/04/03 Date
	<b>SURVEYOR CERTIFICATION</b>  I hereby certify that the well location shown on this plat was plotted from field notes of actual surveys made by me or under my supervision, and that the same is true and correct to the best of my belief.  APRIL 04, 2003 Date Surveyed Signature & Seal of Professional Surveyor  Ronald T. Edson 4/07/03 Certificate No. RONALD T. EDSON 3239 GARY EDSON 12641

## GEOGRAPHIC COORDINATE

NAD 27 NMEZ  
 X = 492766.3  
 Y = 571282.0  
 LAT. = 32°21'16.27"N  
 LONG. = 104°06'08.98"W

# VICINITY MAP



SCALE: 1" = 2 MILES

SEC. 32 TWP. 22-S RGE. 28-E

SURVEY N.M.P.M.

COUNTY EDDY

DESCRIPTION 660' FNL & 60' FEL

ELEVATION 3019'

OPERATOR UNIT PETROLEUM COMPANY

LEASE CARLSBAD

JOHN WEST SURVEYING  
HOBBS, NEW MEXICO  
(505) 393-3117

## A decorative flourish consisting of a vertical line with ornate, symmetrical scrollwork on either side. The word "NORTH" is written vertically in a bold, sans-serif font along the right side of the line.



CONTOUR INTERVAL: 20'  
LOVING, N.M.

JOHN WEST SURVEYING  
HOBBS, NEW MEXICO  
(505) 393-3117

COUNTY \_\_\_\_\_ EDDY

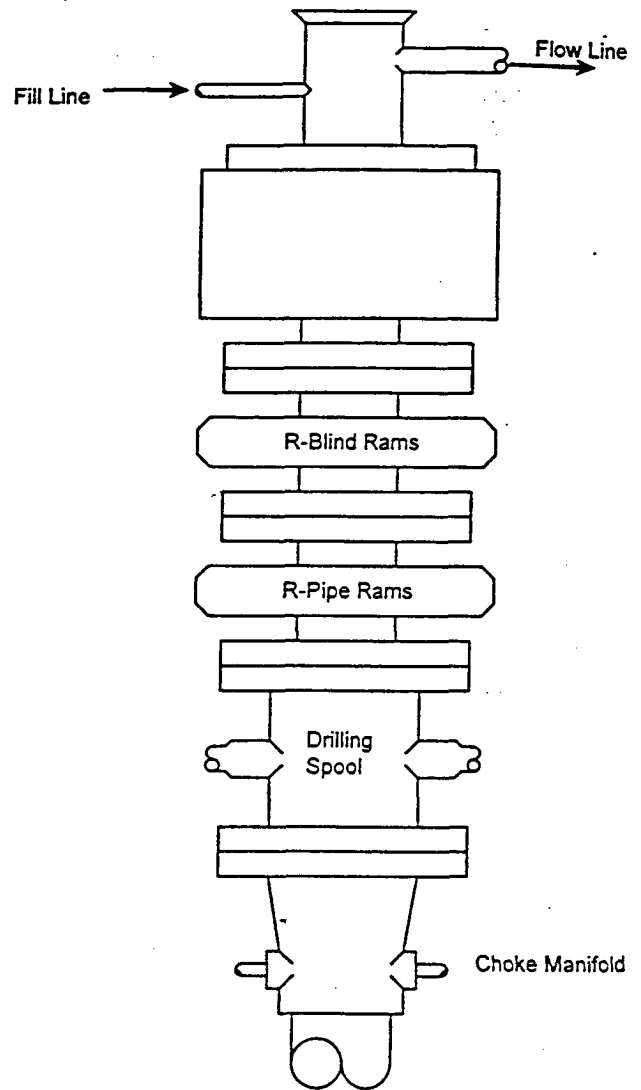
ELEVATION 3019'

LEASE\_\_\_\_\_CARLSBAD

U.S.G.S. TOPOGRAPHIC MAP  
LOVING, N.M.

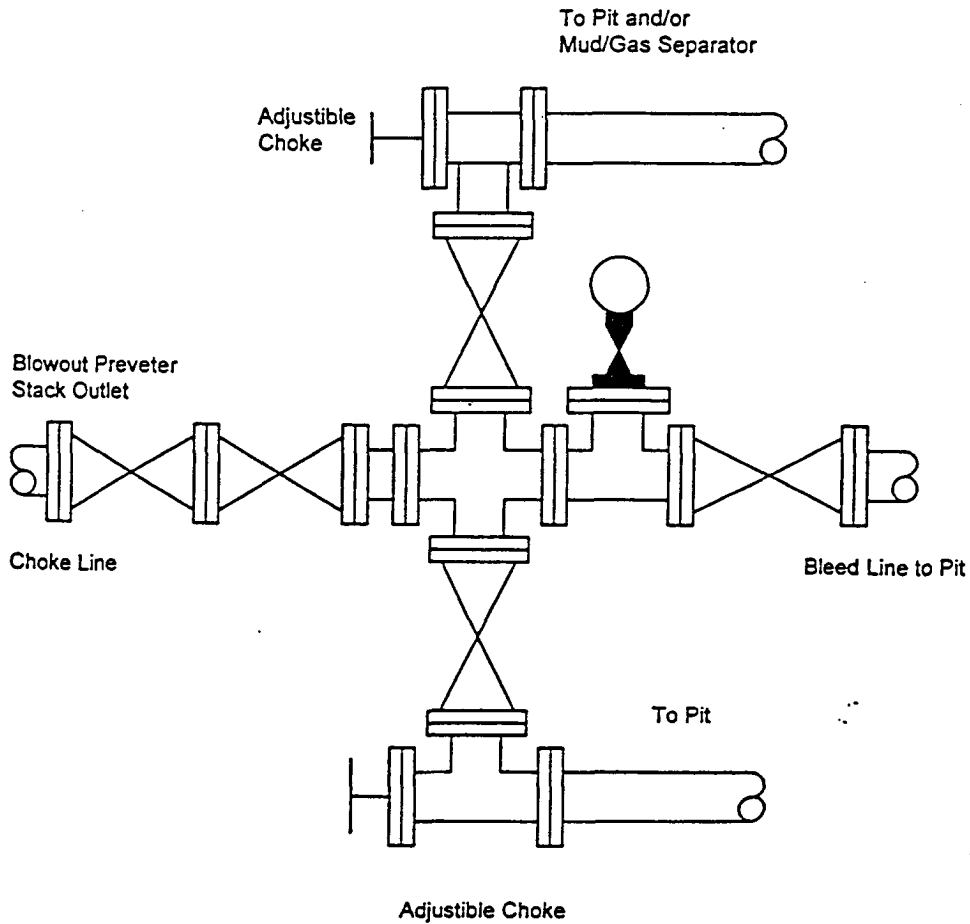
# BLOWOUT PREVENTER SYSTEM

5000 PSI



Type 1500 SERIES  
5000 psi WP

Choke Manifold Assembly for 5M WP System



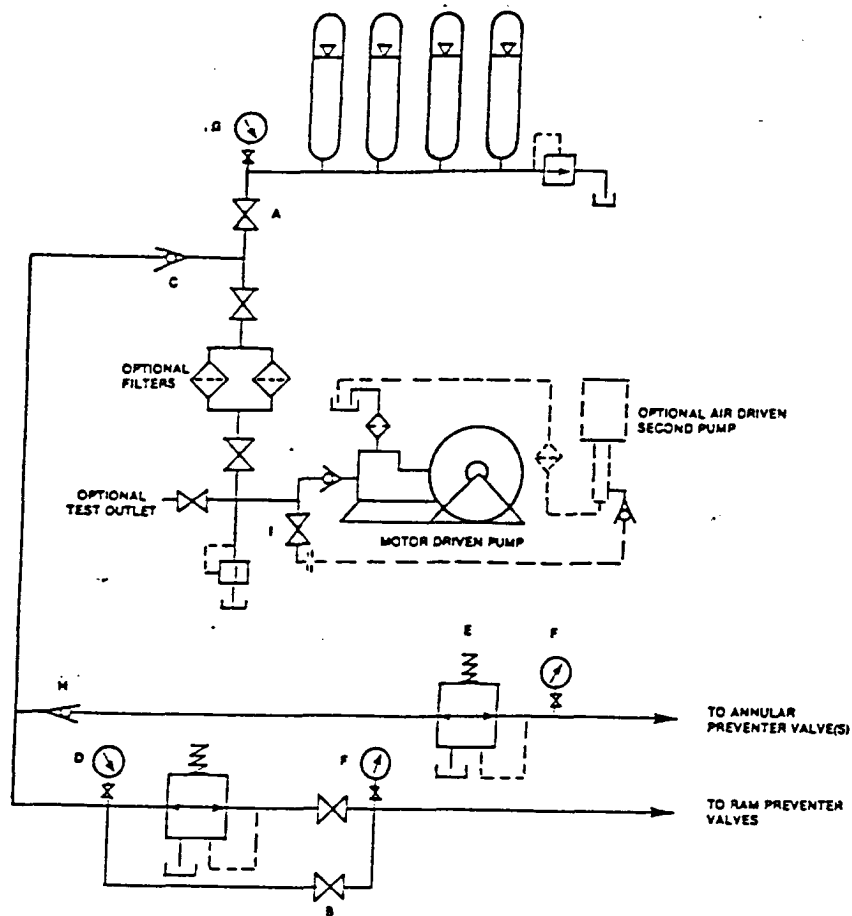


FIGURE K6-1. The schematic sketch of an accumulator system shows required and optional components.

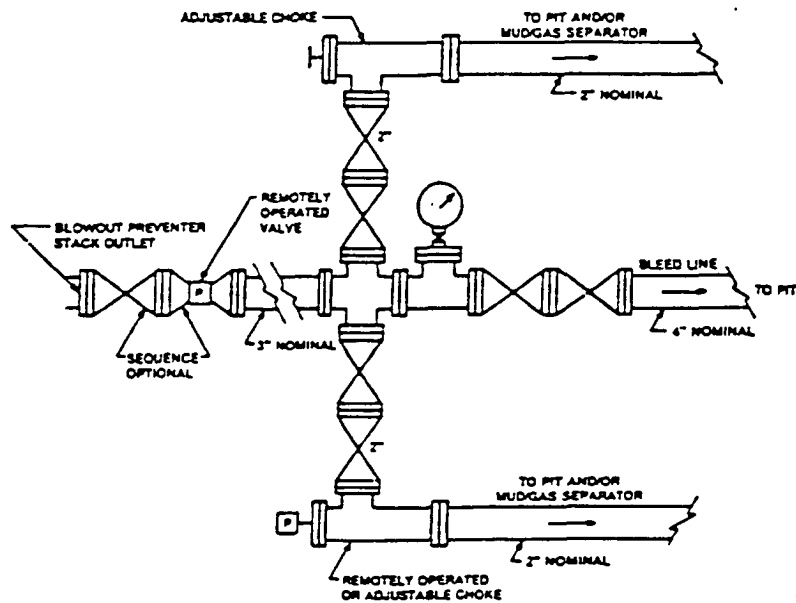
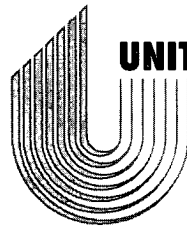


FIGURE K4-2. Typical choke manifold assembly for 5M rated working pressure service — surface installation.



**UNIT PETROLEUM COMPANY**

A Subsidiary of Unit Corporation

**RECEIVED**

**DEC 19 2003**

**OCD-ARTESIA**

December 12, 2003

Oil Conservation Division  
1301 W. Grand Ave.  
Artesia, NM 88210

Re: Carlsbad #1  
Section 32-T22S-R28E  
Eddy County, NM

Dear Sir:

The Carlsbad #1, located in Section 32-T22S-R28E, Eddy County, NM is not in an area where hydrogen sulfide is present. However, personnel are trained in the proper procedures and detectors will be in place as a contingency. Please call me at (918) 493-7700 if I can be of further assistance in this matter.

Sincerely,

Kelly Ryan  
District Engineer

KDR/jfj