

UNITED STATES
DEPARTMENT OF THE INTERIOR
BUREAU OF LAND MANAGEMENTJUN 23 2009
OCD-ARTESIAFORM APPROVED
OMB NO 1004-0137
Expires: March 31, 2007

WELL COMPLETION OR RECOMPLETION REPORT AND LOG

1a. Type of Well ☒ Oil Well ☐ Gas Well ☐ Dry ☐ Other
b. Type of Completion ☒ New Well ☐ Work Over ☐ Deepen ☐ Plug Back ☐ Diff Resvr.,
Other _____

2 Name of Operator
BEPCO, L.P.

3 Address
P.O. BOX 2760 MIDLAND TX 79702-2760

3.a Phone No. (Include area code)
(432)683-2277

4 Location of Well (Report location clearly and in accordance with Federal requirements)*

At Surface SWNW, UL E, 1700' FNL, 990' FWL, LAT N 32.205556, LON W 103.926306

At top prod interval reported below SAME

At total depth

CONFIDENTIAL

14 Date Spudded
03/24/2008

15 Date T D Reached
04/06/2008

16 Date Completed
☐ D & A ☒ Ready to Prod
05/08/2008

5. Lease Serial No.
NMNM 02860

6. If Indian, Allottee or Tribe Name

7 Unit or CA Agreement Name and no
NMNM 71016

8 Lease Name and Well No

POKER LAKE UNIT 295

9 API Well No.

30-015-35549

10 Field and Pool, or Exploratory

NASH DRAW-DEL/BS/AV SAND

11 Sec, T, R., M., on Block and

Survey or Area SEC 19, T24S, R30E

12 County or Parish

EDDY

13 State

NM

17 Elevations (DF, RKB, RT, GL)*

3148' GL

18 Total Depth. MD 7439'
TVD

19 Plug Back T D MD 7353'
TVD

20 Depth Bridge Plug Set MD
TVD

21 Type of Electric & Other Mechanical Logs Run (Submit copy of each)
GR-CNL-LDT; GR-AIT

22 Was well cored? ☒ No ☐ Yes (Submit analysis)

Was DST run? ☒ No ☐ Yes (Submit analysis)

Directional Survey? ☒ No ☐ Yes (Submit copy)

23 Casing and Liner Record (Report all strings set in well)

Hole Size	Size/Grade	Wt. (#/ft)	Top (MD)	Bottom (MD)	Stage Cementer Depth	No of Sks & Type of Cement	Slurry Vol (BBL)	Cement Top*	Amount Pulled
12-1/4"	8-5/8"K55	32#	0'	625'		445 sxs		0'	
7-7/8"	5-1/2"J55	15.5/17#	0'	7439'	5063'	425 stg. 1		5063' circ.	
						1325 stg. 2		0' circulated	

24 Tubing Record

Size	Depth Set (MD)	Packer Depth (MD)	Size	Depth Set (MD)	Packer Depth (MD)	Size	Depth Set (MD)	Packer Depth (MD)
2-7/8"	5308' SN'	5206' TAC						

25 Producing Intervals

26. Perforation Record

Formation	Top	Bottom	Perforated Interval	Size	No Holes	Perf Status
A) DELAWARE	3432'	7318'	5530-40'	0.380	20	PRODUCING
B)			6132-42'	0.380	20	PRODUCING
C)			6942-7126'	0.380	20	PRODUCING
D)			7258-68'	0.380	20	PRODUCING

27 Acid, Fracture, Treatment, Cement Squeeze, Etc

Depth Interval	Amount and Type of Material
5530-40"	FRAC'D W/21261 GALS VIKING 3000 + 61000 #'S 16/30 OTTAWA & 8000 #'S SUPER LC
6132-42'	FRAC'D W/127253 GALS VIKING 3000 + 61000 #'S 16/30 OTTAWA & 18000 #'S SUPER LC
6942-7126'	FRAC'D W/ 117125 GALS PW + 10000 #'S 16/30 LITE PROP
7258-68'	FRAC'D W/114729 GALS PW + 10000 #'S 16/30 LITE PROP

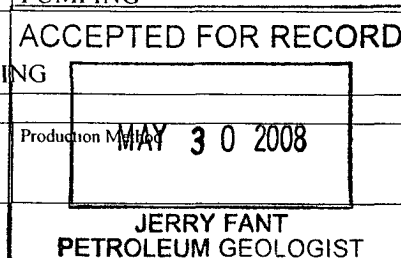
28. Production - Interval A

Date First Produced	Test Date	Hours Tested	Test Production	Oil BBL	Gas MCF	Water BBL	Oil Gravity Corr API	Gas Gravity	Production Method
05/08/08	05/18/08	24	→	352	295	241			PUMPING
Choice Size	Tbg Press Flwg SI	Csg Press	24 Hr Rate	Oil BBL	Gas MCF	Water BBL	Gas Oil Ratio	Well Status	
24/64"	150	150	→				838	PRODUCING	

Production - Interval B

Date First Produced	Test Date	Hours Tested	Test Production	Oil BBL	Gas MCF	Water BBL	Oil Gravity Corr API	Gas Gravity	Production Method
			→						
Choke Size	Tbg Press Flwg SI	Csg Press	24 Hr Rate	Oil BBL	Gas MCF	Water BBL	Gas Oil Ratio	Well Status	
			→						

(See Instructions and spaces for additional data on page 2)



28b. Production - Interval C

Date First Produced	Test Date	Hours Tested	Test Production →	Oil BBL	Gas MCF	Water BBL	Oil Gravity Corr. API	Gas Gravity	Production Method
Choke Size	Tbg. Press Flwg SI	Csg Press	24 Hr Rate →	Oil BBL	Gas MCF	Water BBL	Gas : Oil Ratio	Well Status	

28c. Production - Interval D

Date First Produced	Test Date	Hours Tested	Test Production →	Oil BBL	Gas MCF	Water BBL	Oil Gravity Corr. API	Gas Gravity	Production Method
Choke Size	Tbg. Press Flwg SI	Csg Press	24 Hr Rate →	Oil BBL	Gas MCF	Water BBL	Gas : Oil Ratio	Well Status	

29. Disposition of Gas (Sold, used for fuel, vented, etc.)

SOLD

30. Summary of Porous Zones (Include Aquifers)

Show all important zones or porosity and contents thereof: Cored intervals and all drill-stem tests, including depth interval tested, cushion used, time tool open, flowing and shut-in pressures and recoveries

31. Formation (Log) Markers

Formation	Top	Bottom	Descriptions, Contents, etc.	Name	Top
					Meas Depth
				T/SALT	647'
				B/SALT	3194'
				T/LAMAR	3404'
				T/BELL CANYON	3432'
				T/CHERRY CANYON	4250'
				T/LOWER CHERRY CANYON	5486'
				T/BRUSHY CANYON	5582'
				T/LOWER BRUSHY CANYON	6902'
				T/BONE SPRING LIME	7146'
				T/AVALON SAND	7244'
				B/AVALON SAND	7318'

32. Additional remarks (include plugging procedure)

33. Indicate which items have been attached by placing a check in the appropriate boxes:

- ☒ Electrical/Mechanical Logs (1 full set req'd)
 ☐ Geological Report
 ☐ DST Report
 ☐ Directional Survey
☐ Sundry Notice for plugging and cement verification
 ☐ Core Analysis
☒ Other

34. I hereby certify that the foregoing and attached information is complete and correct as determined from all available records (see attached instructions)*

Name (please print) ANN MOORETitle PRODUCTION CLERK

Signature _____

Date 05/23/2008

Title 18 U.S.C. Section 101 and Title 43 U.S.C. Section 1212, make it a crime for any person knowingly and willfully to make to any department or agency of the United States and false, fictitious or fraudulent statements or representations as to any matter within its jurisdiction.

DISTRICT I

1625 N. French Dr., Hobbs, NM 88240

DISTRICT II

1301 W. Grand Avenue, Artesia, NM 88210

DISTRICT III

1000 Rio Brazos Rd., Aztec, NM 87410

DISTRICT IV

1220 St. Francis Dr., Santa Fe, NM 87505

State of New Mexico
Energy, Minerals and Natural Resources Department

OIL CONSERVATION DIVISION

1220 South St. Francis Dr.
Santa Fe, New Mexico 87505

Form C-102

Revised October 12, 2005

Submit to Appropriate District Office

State Lease - 4 Copies

Fee Lease - 3 Copies

☐ AMENDED REPORT

WELL LOCATION AND ACREAGE DEDICATION PLAT

API Number 30-015-35549	Pool Code 47545	Pool Name Nash Draw (Delaware, Bone Spring, Avalon Sand)
Property Code 1796	Property Name POKER LAKE UNIT	Well Number 295
OGRID No. 001801	Operator Name BEPCO, L.P.	Elevation 3148'

Surface Location

UL or lot No.	Section	Township	Range	Lot Idn	Feet from the	North/South line	Feet from the	East/West line	County
LOT 2	19	24 S	30 E		1700	NORTH	990	WEST	EDDY

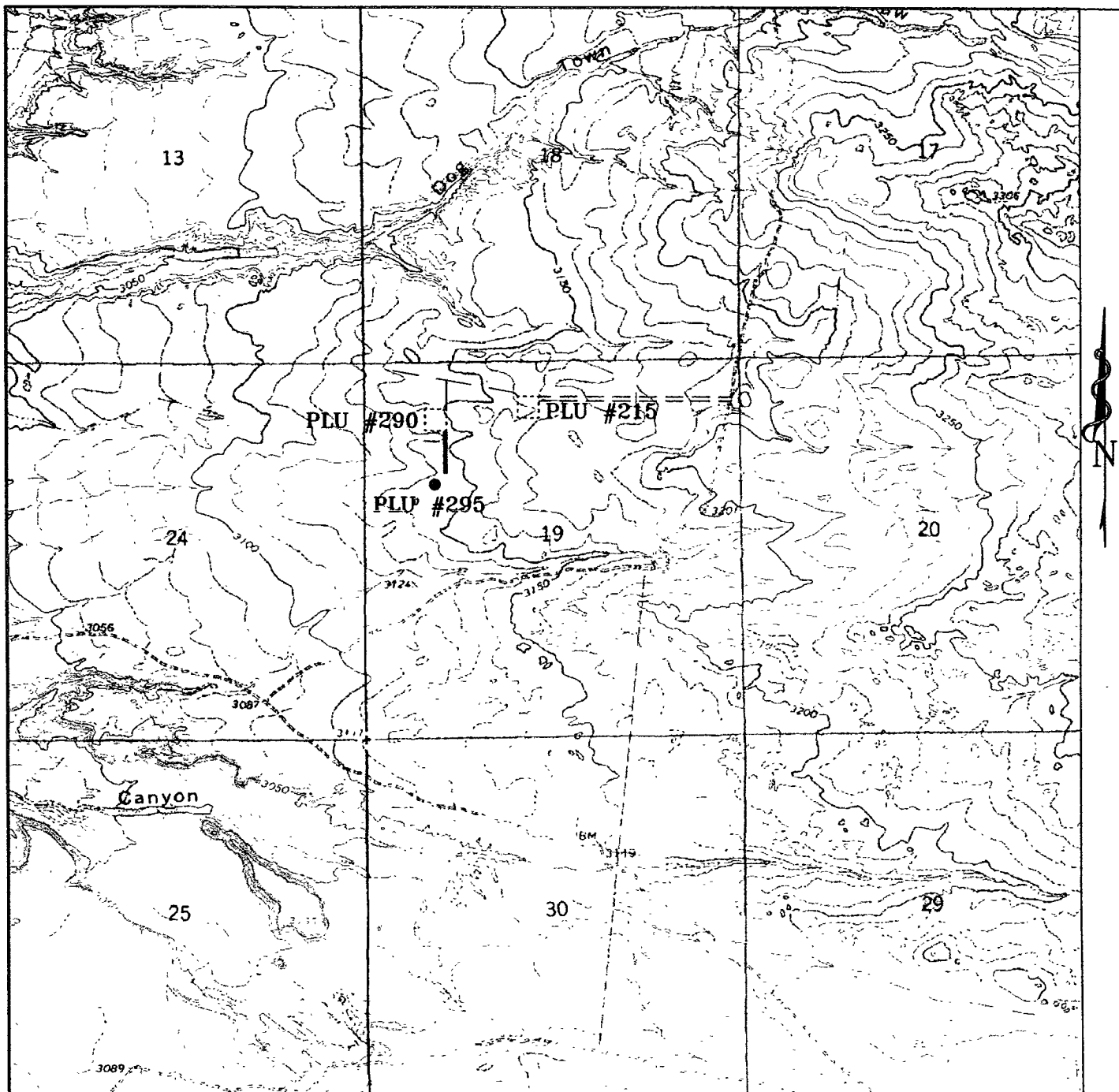
Bottom Hole Location If Different From Surface

UL or lot No.	Section	Township	Range	Lot Idn	Feet from the	North/South line	Feet from the	East/West line	County

Dedicated Acres 40	Joint or Infill N	Consolidation Code	Order No.
-----------------------	----------------------	--------------------	-----------

NO ALLOWABLE WILL BE ASSIGNED TO THIS COMPLETION UNTIL ALL INTERESTS HAVE BEEN CONSOLIDATED
OR A NON-STANDARD UNIT HAS BEEN APPROVED BY THE DIVISION

	<p>OPERATOR CERTIFICATION</p> <p>I hereby certify that the information contained herein is true and complete to the best of my knowledge and belief, and that this organization either owns a working interest or unleased mineral interest in the land including the proposed bottom hole location pursuant to a contract with an owner of such a mineral or working interest, or to a voluntary pooling agreement or a compulsory pooling order heretofore entered by the division.</p> <p><i>Gary E. Gerhard</i> 2/16/07 Signature Date</p> <p>Gary E. Gerhard Printed Name</p> <p>SURVEYOR CERTIFICATION</p> <p>I hereby certify that the well location shown on this plat was plotted from field notes of actual surveys made by me or under my supervision and that the same is true and correct to the best of my belief.</p> <p>JANUARY 05, 2007 Date Surveyed</p> <p><i>Gary L. Jones</i> Signature of Professional Surveyor</p> <p>7977 Professional Surveyor No.</p> <p>608 Certificate No.</p> <p>Certificate No. Gary L. Jones 7977</p> <p>BASIN SURVEYS</p>
--	-----------------------------------------------------------------------------------------------------------------------------------------------------------------------------------------------------------------------------------------------------------------------------------------------------------------------------------------------------------------------------------------------------------------------------------------------------------------------------------------------------------------------------------------------------------------------------------------------------------------------------------------------------------------------------------------------------------------------------------------------------------------------------------------------------------------------------------------------------------------------------------------------------------------------------------------------------------------------------------------------------------------------------------------------------------------------------------------------------------------



POKER LAKE UNIT #295

1700' FNL and 990' FWL

Section 19, Township 24 South, Range 30 East,
N.M.P.M., Eddy County, New Mexico.



P.O. Box 1786
1120 N. West County Rd.
Hobbs, New Mexico 88241
(505) 393-7316 - Office
(505) 392-3074 - Fax
basinsurveys.com

W O Number: JMS 17608T

Survey Date 01-05-2007

Scale: 1" = 2000'

Date: 01-08-2007

BEPCO, L.P.

SECTION 19, TOWNSHIP 24 SOUTH, RANGE 30 EAST, N.M.P.M.,
EDDY COUNTY, NEW MEXICO.

POKER LAKE UNIT 290

POKER LAKE UNIT 215

PROPOSED LEASE ROAD 592.4'

3138.9' 600' 3152.7'

150' NORTH
OFF SET
3144.2'

BEPCO, L.P.
POKER LAKE UNIT #295
ELEV. - 3148'

150' WEST
OFF SET
3145.6'

Lat. -N 32°12'20.0"
Long -W 103°55'34.7"
(NAD-83)

150' EAST
OFF SET
3147.3'

150' SOUTH
OFF SET
3145.8'

600' 3146.0' 600' 3131.7'

DIRECTIONS TO LOCATION:

FROM THE JUNCTION OF STATE HWY 128 AND CO. RD. 793 (RAWHIDE), PROCEED SOUTH ON CO. RD. 793 11.4 MILES TO LEASE ROAD, ON LEASE ROAD GO WEST 0.6 MILES AROUND PLU #21 TO THE PLU #215 AND FOLLOW PROPOSED LEASE ROAD TO BEPCO WELL AND PROPOSED LEASE ROAD TO THE PLU 290 AND PROPOSED LEASE ROAD..

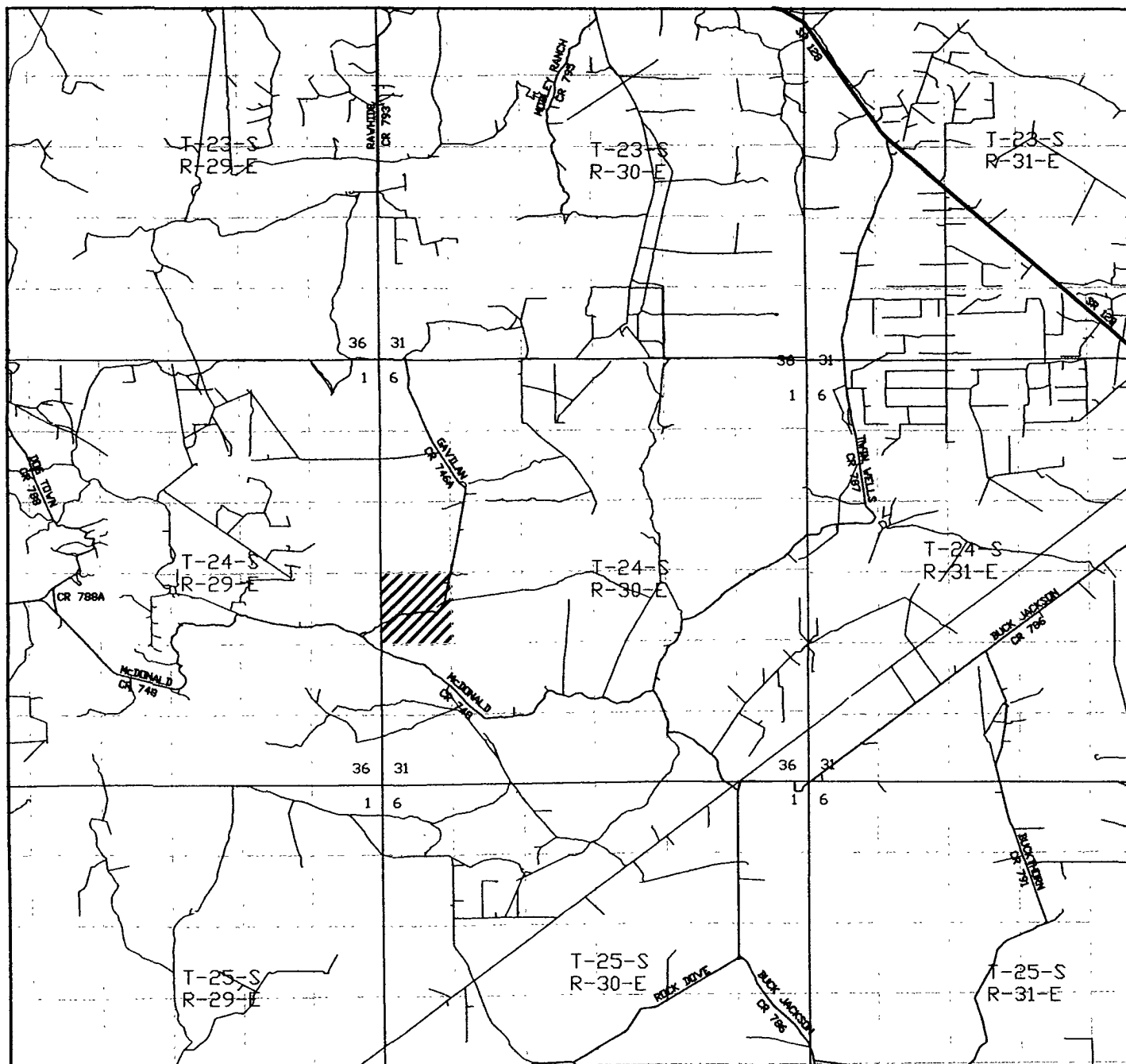
200 0 200 400 FEET

SCALE: 1" = 200'

BEPCO, L.P.	
REF: POKER LAKE UNIT #295 / WELL PAD AND TOPO	
THE POKER LAKE UNIT No. 295 LOCATED 1700'	
FROM THE NORTH LINE AND 990' FROM THE WEST LINE OF	
SECTION 19, TOWNSHIP 24 SOUTH, RANGE 30 EAST,	
N.M.P.M., EDDY COUNTY, NEW MEXICO.	

W.O. Number: 17608	Drawn By: J. SMALL
Date: 01-08-2007	Disk: 17608W JMS
Survey Date: 01-05-2007	Sheet 1 of 1 Sheets

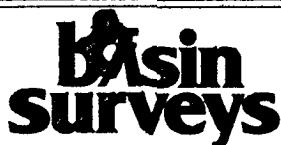
BASIN SURVEYS P.O. BOX 1786-HOBBS, NEW MEXICO



POKER LAKE UNIT #295

1700' FNL and 990' FWL

Section 19, Township 24 South, Range 30 East,
N.M.P.M., Eddy County, New Mexico.



focused on excellence
in the oilfield

P.O. Box 1786
1120 N. West County Rd.
Hobbs, New Mexico 88241
(505) 393-7316 - Office
(505) 392-3074 - Fax
basinsurveys.com

W.O. Number: JMS 17608TR

Survey Date: 01-05-2007

Scale: 1" = 2000'

Date: 01-08-2007

BEPCO, L.P.