

NEW MEXICO OIL CONSERVATION COMMISSION
WELL LOCATION AND ACREAGE DEDICATION PLAT

JUL 29 2009 Form C-102
Supersedes C-128
Effective 1-1-65

All distances must be from the outer boundaries of the Section

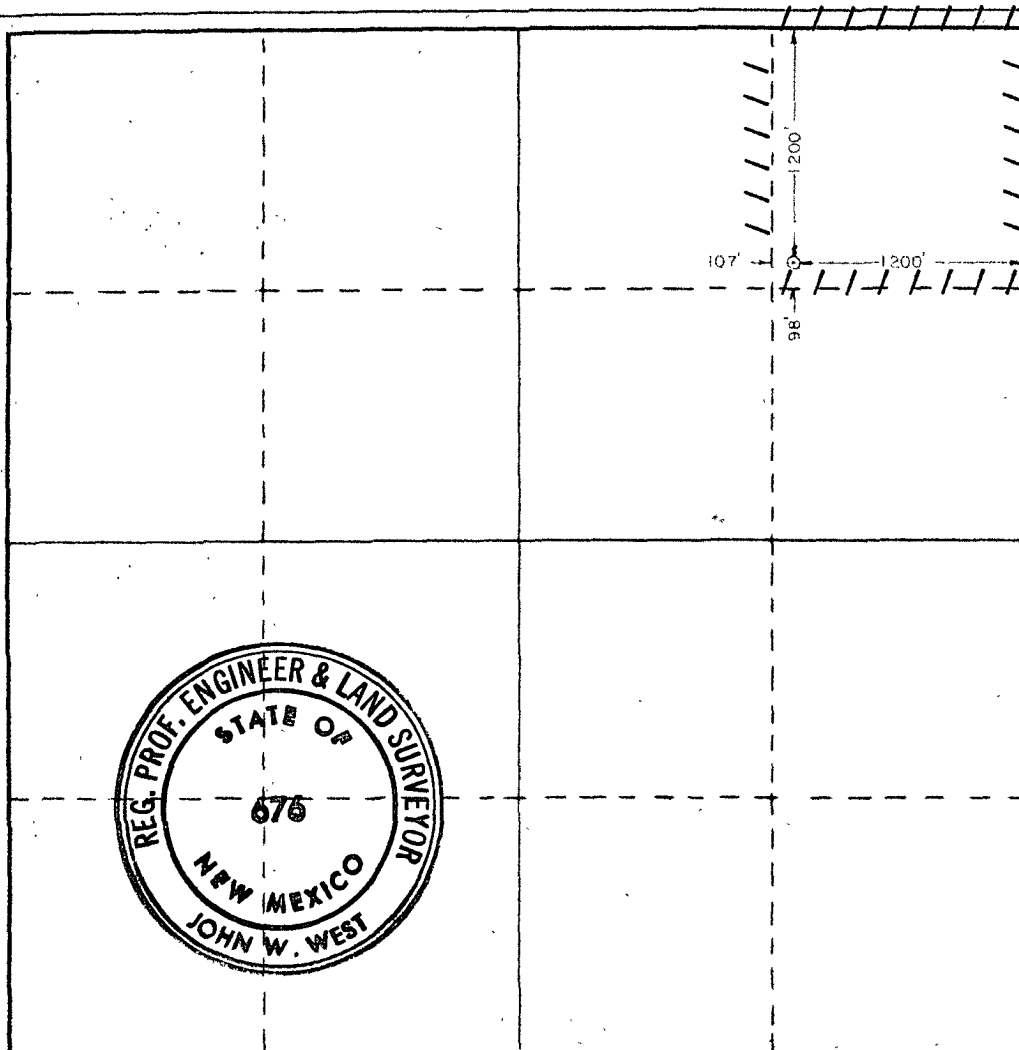
Operator Atlantic Richfield Co.			Lease Empire Abo Unit		Well No. 362
Unit Letter A	Section 34	Township 17-S	Range 28-E	County Eddy	
Actual Footage Location of Well: 1200 feet from the North line and 1200 feet from the East line					
Ground Level Elev. 3675.9	Producing Formation Abo Reef		Pool Empire Abo		Dedicated Acreage: 40 Acres

1. Outline the acreage dedicated to the subject well by colored pencil or hachure marks on the plat below.
2. If more than one lease is dedicated to the well, outline each and identify the ownership thereof (both as to working interest and royalty).
3. If more than one lease of different ownership is dedicated to the well, have the interests of all owners been consolidated by communitization, unitization, force-pooling, etc?

☒ Yes ☐ No If answer is "yes," type of consolidation Unitization

If answer is "no," list the owners and tract descriptions which have actually been consolidated. (Use reverse side of this form if necessary.)

No allowable will be assigned to the well until all interests have been consolidated (by communitization, unitization, forced-pooling, or otherwise) or until a non-standard unit, eliminating such interests, has been approved by the Commission.



CERTIFICATION

I hereby certify that the information contained herein is true and complete to the best of my knowledge and belief.

Name John W. West
Position Dist. Drlg. Supt.
Company Atlantic Richfield Company
Date 2/2/79

I hereby certify that the well location shown on this plat was plotted from field notes of actual surveys made by me or under my supervision, and that the same is true and correct to the best of my knowledge and belief.

Date Surveyed October 25, 1978
Registered Professional Engineer and/or Land Surveyor

John W. West
Certificate No. John W. West 676
Ronald J. Eidson 3239

0 330 660 990 1320 1650 1980 2310 2640 2000 1500 1000 500