

DISTRICT I  
1625 N. French Dr., Hobbs, NM 88240

DISTRICT II  
811 South First, Artesia, NM 88210

DISTRICT III  
1000 Rio Brazos Rd., Aztec, NM 87410

DISTRICT IV  
2040 South Pacheco, Santa Fe, NM 87505

State of New Mexico  
Energy, Minerals and Natural Resources Department

Form C-102  
Revised March 17, 1999

Submit to Appropriate District Office  
State Lease - 4 Copies  
Fee Lease - 3 Copies

OIL CONSERVATION DIVISION

2040 South Pacheco  
Santa Fe, New Mexico 87504-2088

☐ AMENDED REPORT

WELL LOCATION AND ACREAGE DEDICATION PLAT

API Number 30-015-35843	Pool Code 47545	Pool Name NASH DRAW -( DELAWARE/BS/AVAL)
Property Code 001796	Property Name POKER LAKE UNIT	Well Number 240
OGRID No. 001801	Operator Name BASS ENTERPRISES PRODUCTION COMPANY	Elevation 3124'

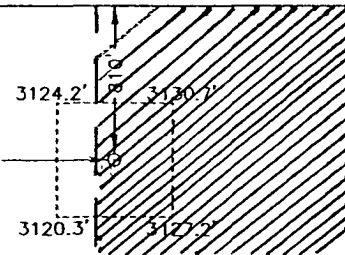
Surface Location

UL or lot No.	Section	Township	Range	Lot Idn	Feet from the	North/South line	Feet from the	East/West line	County
C	30	24 S	30 E		810	NORTH	1420	WEST	EDDY

Bottom Hole Location If Different From Surface

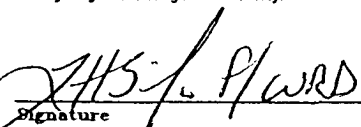
UL or lot No.	Section	Township	Range	Lot Idn	Feet from the	North/South line	Feet from the	East/West line	County
Dedicated Acres 40	Joint or Infill N	Consolidation Code	Order No.						

NO ALLOWABLE WILL BE ASSIGNED TO THIS COMPLETION UNTIL ALL INTERESTS HAVE BEEN CONSOLIDATED  
OR A NON-STANDARD UNIT HAS BEEN APPROVED BY THE DIVISION

LOT 1 40.12 ACRES		LAT - N32°11'36.5" LONG - W103°55'29.6"	81.34 ACRES	162.26 ACRES
LOT 2 40.16 ACRES				
LOT 3 40.20 ACRES				
LOT 4 40.24 ACRES	81.18 ACRES		162.27 ACRES	

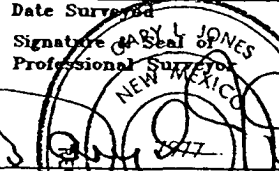
**OPERATOR CERTIFICATION**

I hereby certify the the information contained herein is true and complete to the best of my knowledge and belief.

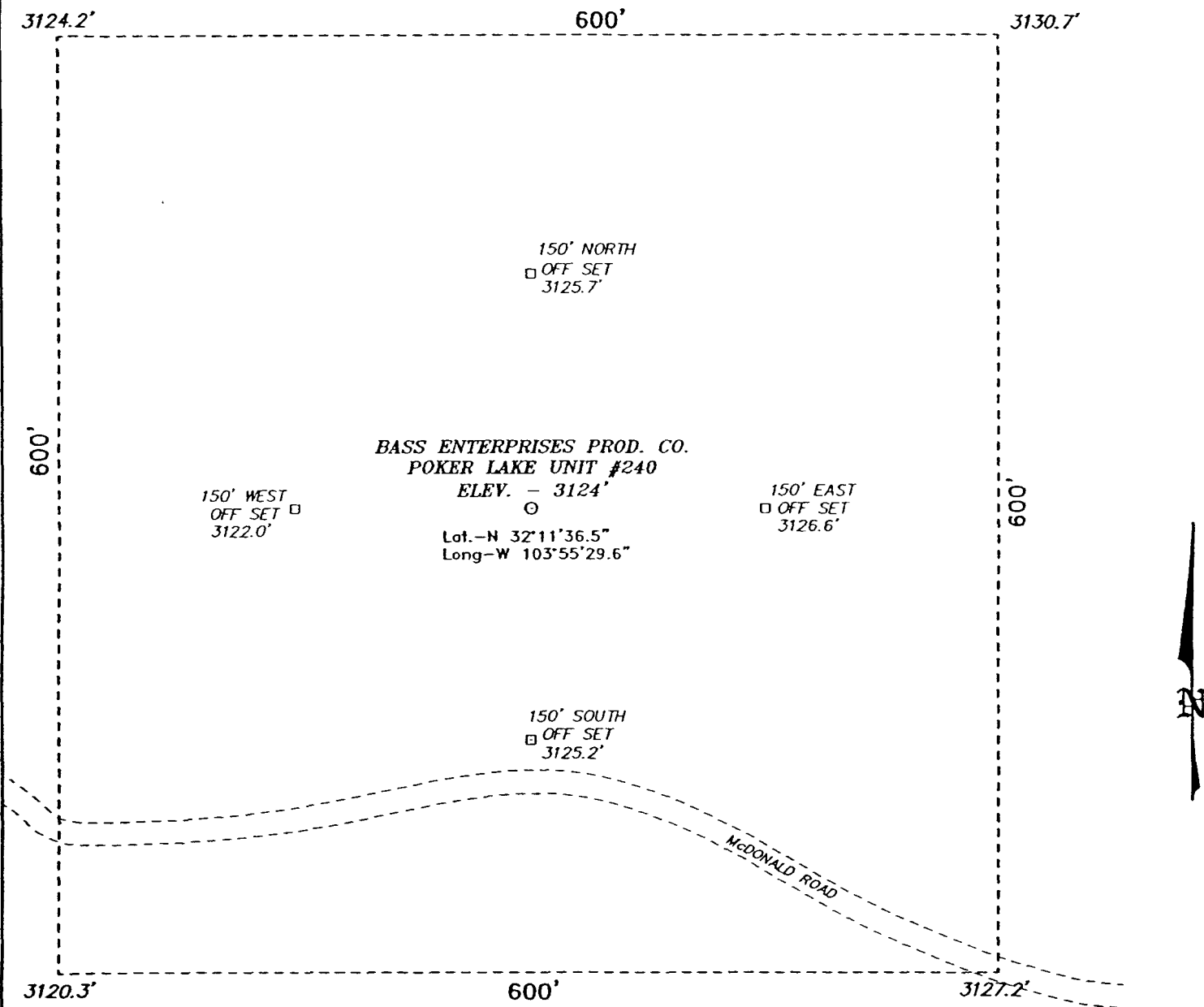
  
Signature  
W.R. DANNELS  
Printed Name  
DIVISION DRILLING SUPT.  
Title  
Date

**SURVEYOR CERTIFICATION**

I hereby certify that the well location shown on this plat was plotted from field notes of actual surveys made by me or under my supervision, and that the same is true and correct to the best of my belief.

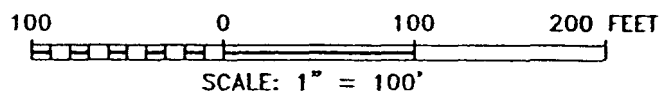
JUNE 16, 2005  
Date Surveyed  
Signature   
Professional Surveyor  
NEW MEXICO  
W.O. No 55174  
Certificate No. Gary L. Jones 7977

SECTION 30, TOWNSHIP 24 SOUTH, RANGE 30 EAST, N.M.P.M.,  
EDDY COUNTY, NEW MEXICO.



DIRECTIONS TO LOCATION:

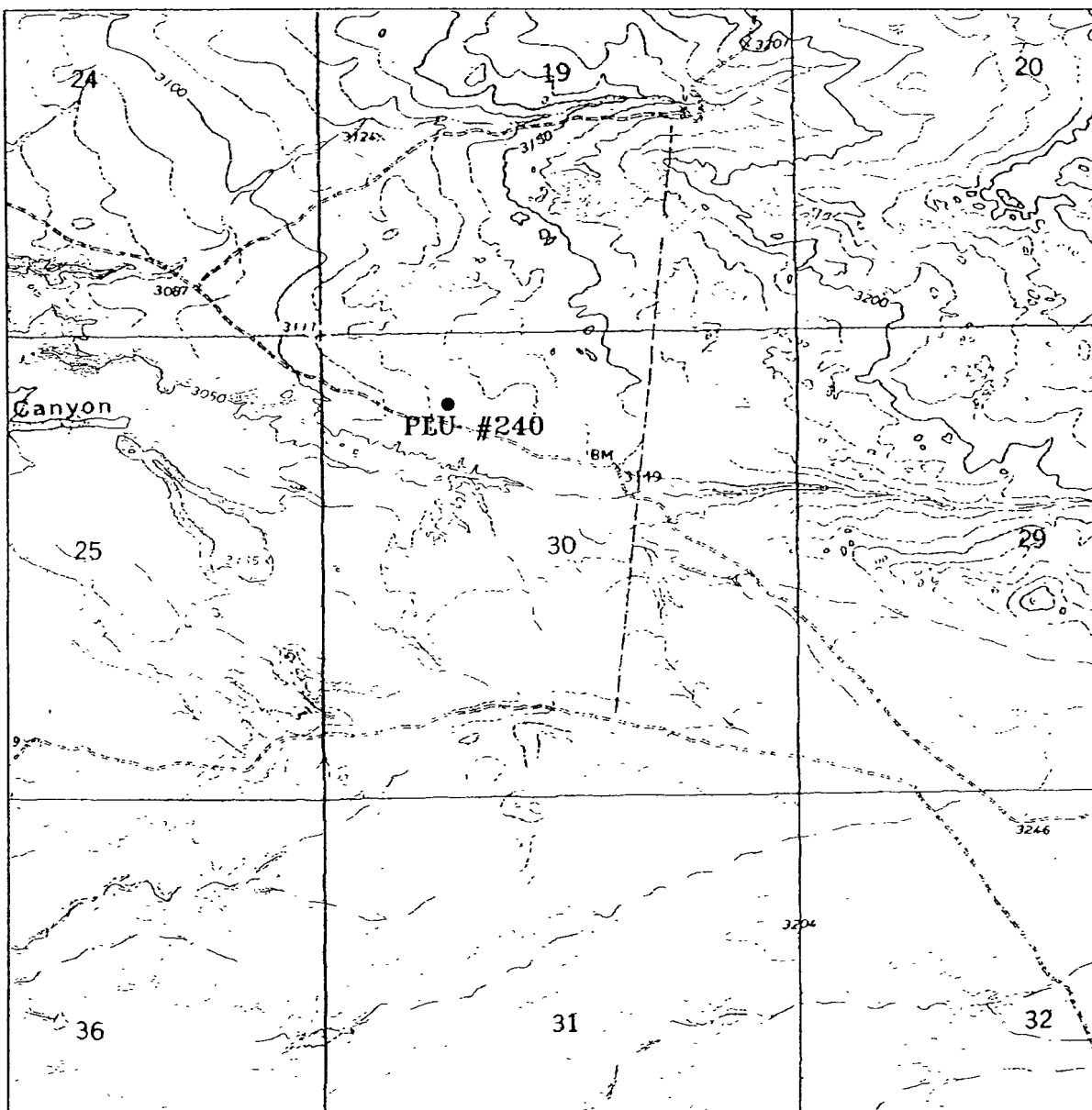
FROM THE JUNCTION OF STATE HWY 128 AND  
RAWHIDE ROAD, GO SOUTH FOR 10.2 MILES; STAY ON  
MAIN ROAD AND GO TO SECOND WIND MILL AND TURN  
SOUTH AND CONTINUE 0.3 MILE TO PROPOSED WELL  
PAD.



**BASS ENTERPRISES PRODUCTION CO.**

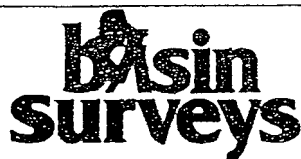
REF: POKER LAKE UNIT No. 240 / Well Pad Topo

THE POKER LAKE UNIT No. 240 LOCATED 810' FROM  
THE NORTH LINE AND 1420' FROM THE WEST LINE OF  
SECTION 30, TOWNSHIP 24 SOUTH, RANGE 30 EAST,



# **POKER LAKE UNIT #240**

Located at 810' FNL and 1420' FWL  
 Section 30, Township 24 South, Range 30 East,  
 N.M.P.M., Eddy County, New Mexico.



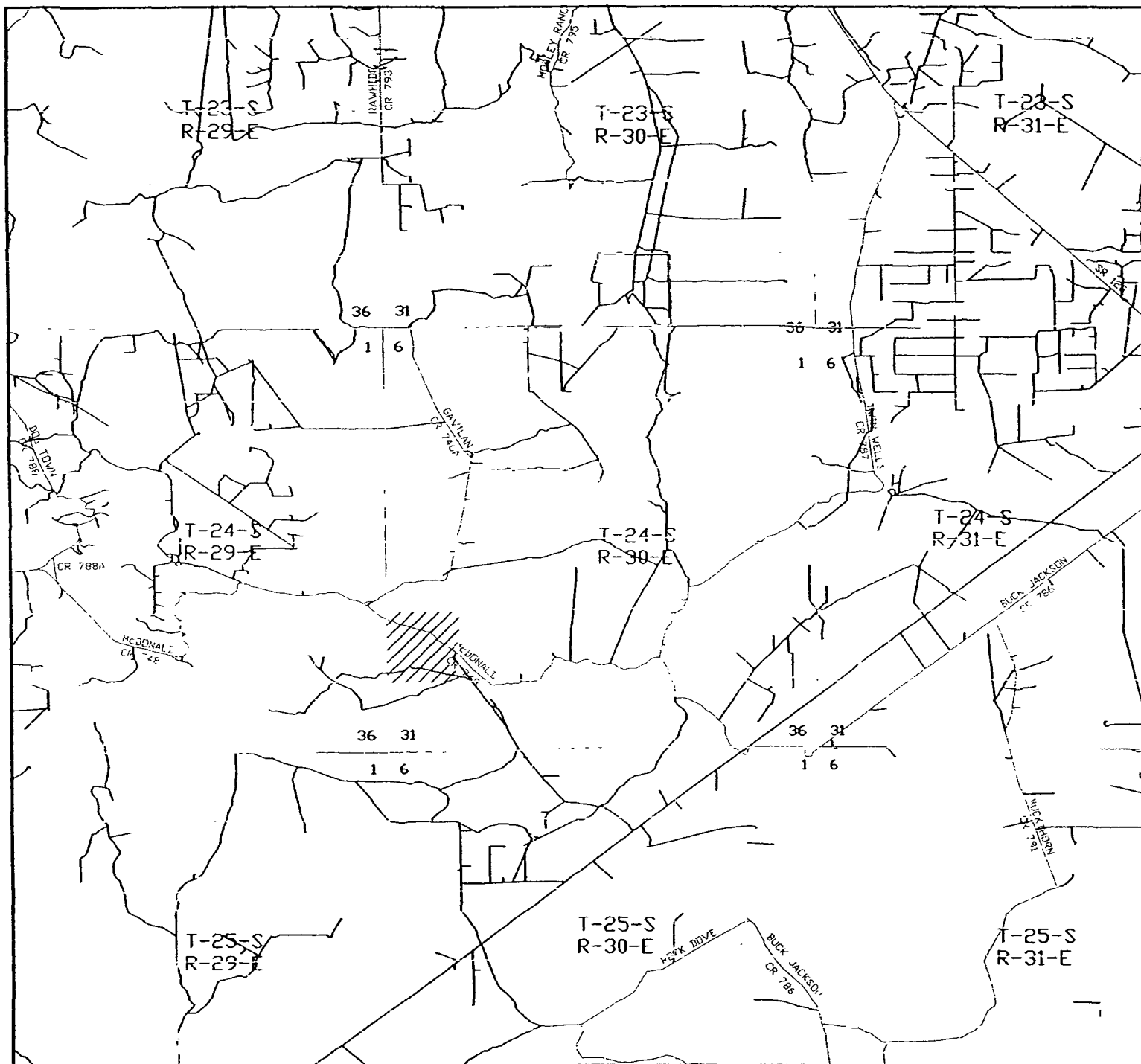
P.O. Box 1786  
 1120 N. West County Rd.  
 Hobbs, New Mexico 88241  
 (505) 393-7316 - Office  
 (505) 392-3074 - Fax

W.O. Number: 5513AA - KJG #7

Survey Date: 06-16-2005

Scale: 1" = 2000'

**BASS ENTERPRISES  
 PRODUCTION CO.**



# **POKER LAKE UNIT #240**

Located at 810' FNL and 1420' FWL  
 Section 30, Township 24 South, Range 30 East,  
 N.M.P.M., Eddy County, New Mexico.



P.O. Box 1786  
 1120 N. West County Rd.  
 Hobbs, New Mexico 88241  
 (505) 393-7316 - Office  
 (505) 392-3074 - Fax

W.O. Number: 5513AA - KJG #7

Survey Date: 06-16-2005

Scale: 1" = 2 MILES

**BASS ENTERPRISES  
 PRODUCTION CO.**