

API - 30-015-36840

MAY 15 2009

District I
1625 N. French Dr., Hobbs, NM 88240
District II
1301 W. Grand Avenue, Artesia, NM 88210
District III
1000 Rio Brazos Rd., Aztec, NM 87410
District IV
1220 S. St. Francis Dr., Santa Fe, NM 87505

State of New Mexico
Energy, Minerals & Natural Resources Department
OIL CONSERVATION DIVISION
1220 South St. Francis Dr.
Santa Fe, NM 87505

Form C-102
Revised October 12, 2005
Submit to Appropriate District Office
State Lease- 4 Copies
Fee Lease- 3 Copies


☐ AMENDED REPORT

WELL LOCATION AND ACREAGE DEDICATION PLAT

API Number 30-015-36840	Pool Code 96819	Pool Name Salt Draw, Morrow Gas
Property Code 37528	Property Name MUZZY 2 STATE COM	Well Number 1
OGRID No. 7377	Operator Name EOG RESOURCES, INC.	Elevation 3144.4'

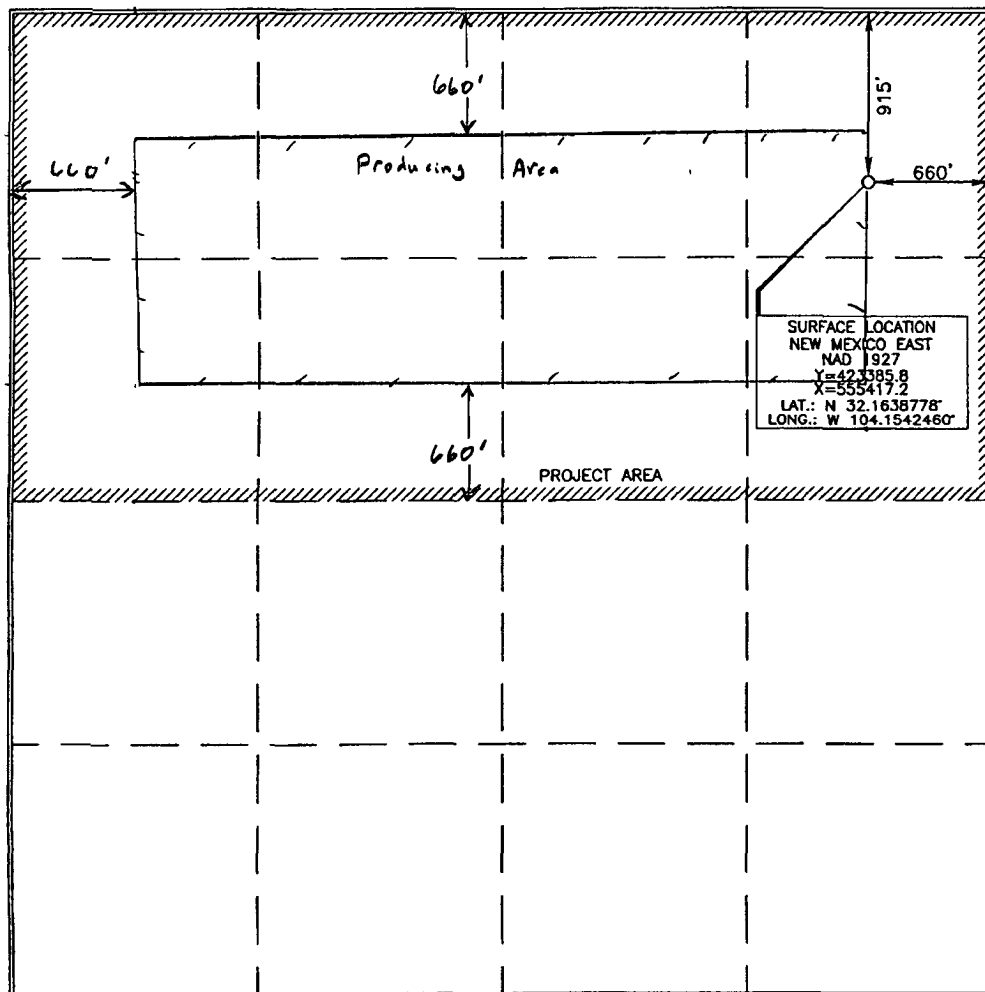
Surface Location

UL or lot no.	Section	Township	Range	Lot Idn	Feet from the	North/South line	Feet from the	East/West line	County
A	2	25 SOUTH	27 EAST, N.M.P.M.		915	NORTH	660	EAST	EDDY

Bottom Hole Location If Different From Surface

UL or lot no.	Section	Township	Range	Lot Idn	Feet from the	North/South line	Feet from the	East/West line	County
Dedicated Acres 317.80		Joint or Infill	Consolidation Code	Order No.					

No allowable will be assigned to this completion until all interests have been consolidated or a non-standard unit has been approved by the division.



OPERATOR CERTIFICATION

I hereby certify that the information contained herein is true and complete to the best of my knowledge and belief, and that this organization either owns a working interest or unleased mineral interest in the land including the proposed bottom hole location or has a right to drill this well at this location pursuant to a contract with an owner of such a mineral or working interest, or to a voluntary pooling agreement or a compulsory pooling order heretofore entered by the division.

Signature: Donny G. Glahn Date: 12/17/08

Printed Name: Donny G. Glahn

SURVEYOR CERTIFICATION

I hereby certify that the well location shown on this plat was plotted from field notes or actual survey made by me or under my supervision, and that the same is true and correct to the best of my belief.

Signature and Seal of Professional Surveyor: Terry J. Paul Date of Survey: NOVEMBER 14, 2008

Certificate Number: 15079

WO# 081001WL-g(KA)