

Submit 3 Copies To Appropriate District Office  
District I  
1625 N French Dr, Hobbs, NM 88240  
District II  
1331 W Grand Ave., Artesia, NM 88210  
District III  
1000 Rio Brazos Rd, Aztec, NM 87410  
District IV  
1220 S St. Francis Dr., Santa Fe, NM 87505

State of New Mexico  
Energy, Minerals and Natural Resources

SEP - 1 2009

Form C-103  
June 19, 2008

OIL CONSERVATION DIVISION  
1220 South St. Francis Dr.  
Santa Fe, NM 87505

<b>SUNDRY NOTICES AND REPORTS ON WELLS</b> (DO NOT USE THIS FORM FOR PROPOSALS TO DRILL OR TO DEEPEN OR PLUG BACK TO A DIFFERENT RESERVOIR. USE "APPLICATION FOR PERMIT" (FORM C-101) FOR SUCH PROPOSALS.)		WELL API NO. 30-015-23660
1. Type of Well: Oil Well <input type="checkbox"/> Gas Well <input checked="" type="checkbox"/> Other		5. Indicate Type of Lease STATE <input checked="" type="checkbox"/> FEE <input type="checkbox"/>
2. Name of Operator Yates Petroleum Corporation		6. State Oil & Gas Lease No. L-5449
3. Address of Operator 105 South Fourth Street, Artesia, NM 88210		7. Lease Name or Unit Agreement Name State 32 Com
4. Well Location Unit Letter <u>G</u> : <u>2080</u> feet from the <u>North</u> line and <u>1980</u> feet from the <u>East</u> line Section <u>32</u> Township <u>20S</u> Range <u>26E</u> NMPM <u>Eddy</u> County		8. Well Number 1
11. Elevation (Show whether DR, RKB, RT, GR, etc.) 3306' GR		9. OGRID Number 025575
		10. Pool name or Wildcat Wildcat; Wolfcamp

12. Check Appropriate Box to Indicate Nature of Notice, Report or Other Data

NOTICE OF INTENTION TO:

PERFORM REMEDIAL WORK ☐ PLUG AND ABANDON ☒  
TEMPORARILY ABANDON ☐ CHANGE PLANS ☐  
PULL OR ALTER CASING ☐ MULTIPLE COMPL ☐  
DOWNHOLE COMMINGLE ☐

OTHER: ☐

SUBSEQUENT REPORT OF:

REMEDIAL WORK ☐ ALTERING CASING ☐  
COMMENCE DRILLING OPNS. ☐ P AND A ☐  
CASING/CEMENT JOB ☐

OTHER: ☐

**Notify OCD 24 hrs. prior  
to any work done.**

13. Describe proposed or completed operations. (Clearly state all pertinent details, and give pertinent dates, including estimated date of starting any proposed work). SEE RULE 1103. For Multiple Completions: Attach wellbore diagram of proposed completion or recompletion.

Yates Petroleum Corporation plans to plug and abandon this well as follows:

1. MIRU WSU and all safety equipment as needed.
2. Spot 35' cement on top of CIBP at 10,016'.
3. Circulate hole with salt gel plugging mud and spot a 25 sx cement plug across the Penn top from 8160'-8385'.
4. Spot a 25 sx cement plug across the Wolfcamp from 7191'-7416'.
5. Spot a 25 sx cement plug across the DV tool from 6428'-6653'.
6. Perforate 4 squeeze holes at 4666'. Pump a 40 sx squeeze and displace the cement down to 4516'. WOC and tag plug, reset if necessary. This will leave a plug across the Bone Spring top.
7. Perforate 4 squeeze holes at 2863'. Pump a 40 sx squeeze and displace the cement down to 2713'. WOC and tag plug, reset if necessary. This will leave a plug across intermediate casing shoe.
8. Perforate 4 squeeze holes at 1650'. Pump a 40 sx squeeze and displace the cement down to 1500'. - WOC Tag
9. Perforate 4 squeeze holes at 418'. Pump a 40 sx squeeze and displace the cement down to 268'. WOC and tag plug, reset if necessary. This will leave a plug across intermediate casing shoe.
10. Perforate 4 squeeze holes at 150'. Tie onto casing and establish circulation. Pump a 40 sx squeeze and do not displace the cement. WOC and tag plug, reset if necessary. This will leave a plug from 0-150'. Cut off wellhead and install dry hole marker and clean up location as per regulated.

NOTE Yates Petroleum Corporation will use steel pits and no earth pits

Spud Date:

Rig Release Date:

I hereby certify that the information above is true and complete to the best of my knowledge and belief.

SIGNATURE Tina Huerta TITLE Regulatory Compliance Supervisor DATE August 28, 2009

Type or print name Tina Huerta E-mail address: tinah@yatespetroleum.com PHONE: 575-748-4168

For State Use Only

Approval Granted providing work  
is complete by 12/1/09

APPROVED BY [Signature] TITLE

DATE 9/1/09

Conditions of Approval (if any):

WELL NAME: State 32 Com No. 1 FIELD: Springs Morrow  
 LOCATION: Unit Letter G 2,080' FNL & 1,980' FEL Sec 32-20S-26E Eddy County NM  
 GL: 3,308' ZERO KB: 3,321'  
 SPUD DATE: 02/24/81 COMPLETION DATE: 08/18/81  
 COMMENTS: API #: 30-015-23660

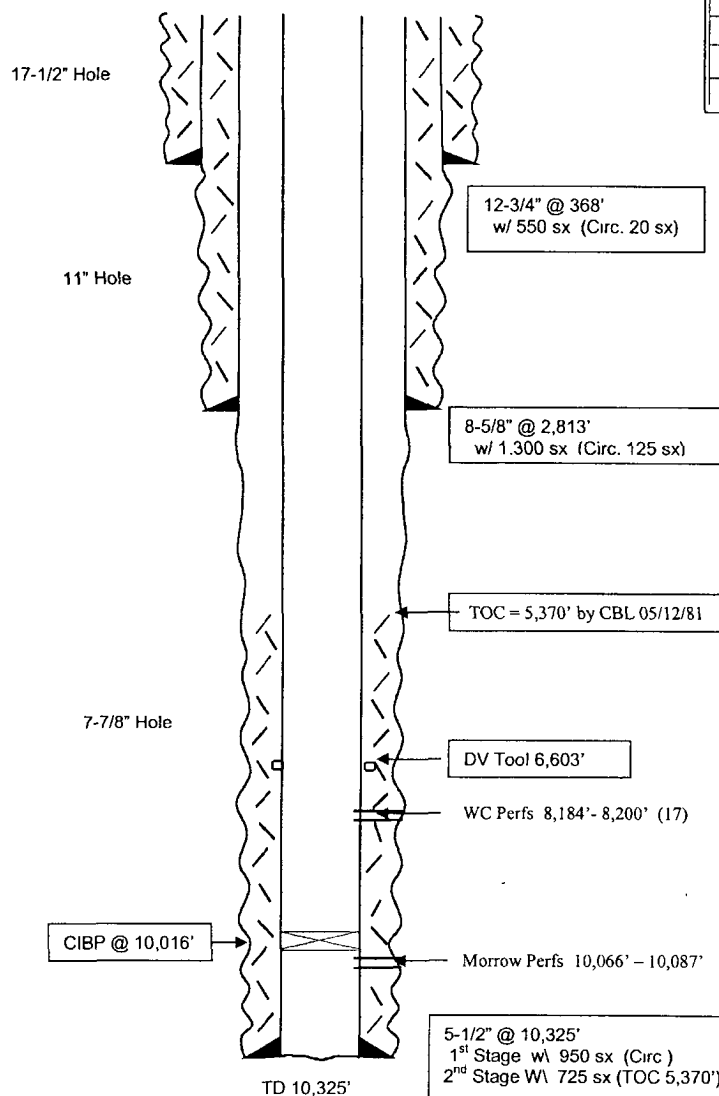
**CASING PROGRAM**

12-3/4" 32#	368'
8-5/8" 24-32# K55 & S80 ST&C	2,813'
5 5" 17# K55 & N80 LT&C	10,325'

**Before**

**TOPS**

BS	4,616'
WC	7,366'
Penn	8,335'
Atoka	9,407'
Morrow	9,913'
Burnett Sh	10,027'



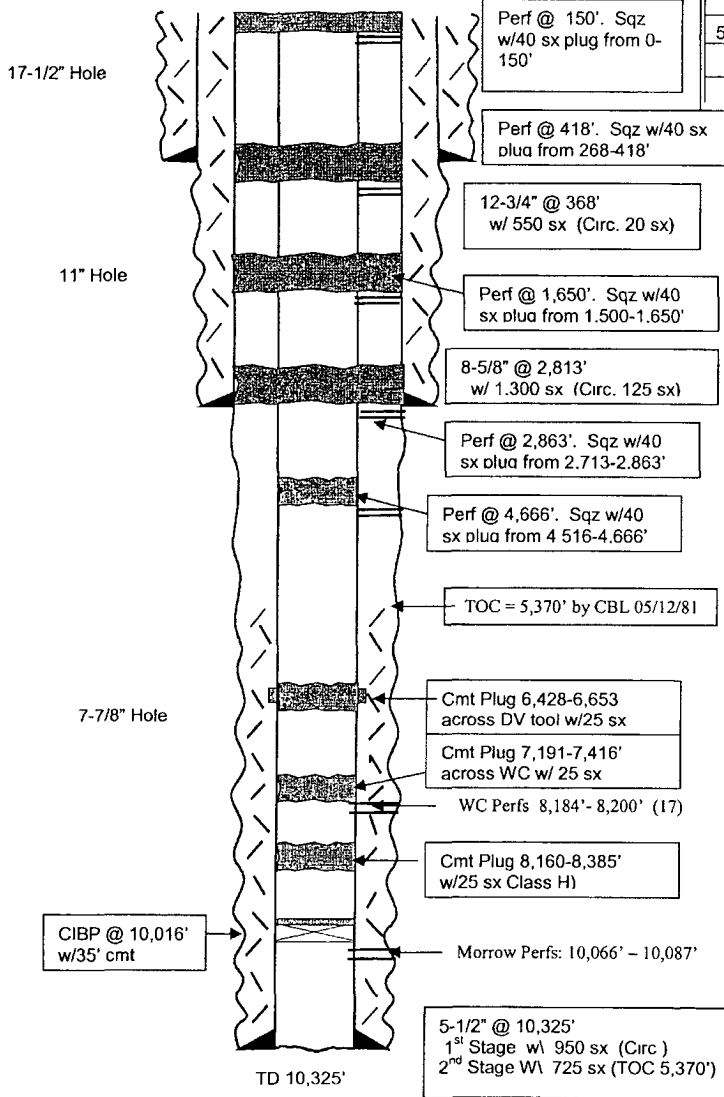
**Not to Scale**

5/28/09  
DC/M Hill

WELL NAME: State 32 Com No 1 FIELD: Springs Morrow  
 LOCATION: Unit Letter G 2,080' FNL & 1,980' FEL Sec 32-20S-26E Eddy County NM  
 GL: 3,308' ZERO: KB: 3,321'  
 SPUD DATE: 02/24/81 COMPLETION DATE: 08/18/81  
 COMMENTS: API #. 30-015-23660

# CASING PROGRAM

12-3/4" 32#	368'
8-5/8" 24-32# K55 & S80 ST&C	2,813'
5.5" 17# K55 & N80 LT&C	10,325'



After

TOPS	
BS	4,616'
WC	7,366'
Penn	8,335'
Atoka	9,407'
Morrow	9,913'
Burnett Sh	10,027'

Not to Scale  
 5/28/09  
 DC/M Hall