

State of New Mexico

DISTRICT I  
1625 N. FRENCH DR., BOBBS, NM 88240

Energy, Minerals and Natural Resources Department

Form C-102

DISTRICT II  
1301 W GRAND AVENUE, ARTESIA, NM 88210

OIL CONSERVATION DIVISION  
1220 SOUTH ST. FRANCIS DR.  
Santa Fe, New Mexico 87505

Revised October 12, 2005  
Submit to Appropriate District Office  
State Lease - 4 Copies  
Fee Lease - 3 Copies

DISTRICT III  
1000 Rio Brazos Rd., Aztec, NM 87410

DISTRICT IV  
1220 S. ST. FRANCIS DR., SANTA FE, NM 87505

WELL LOCATION AND ACREAGE DEDICATION PLAT

AMENDED REPORT

API Number	Pool Code	Pool Name
Property Code	Property Name <b>SKELLY UNIT</b>	Well Number
OGRID No	Operator Name <b>COG OPERATING, LLC</b>	Elevation 3866

Surface Location

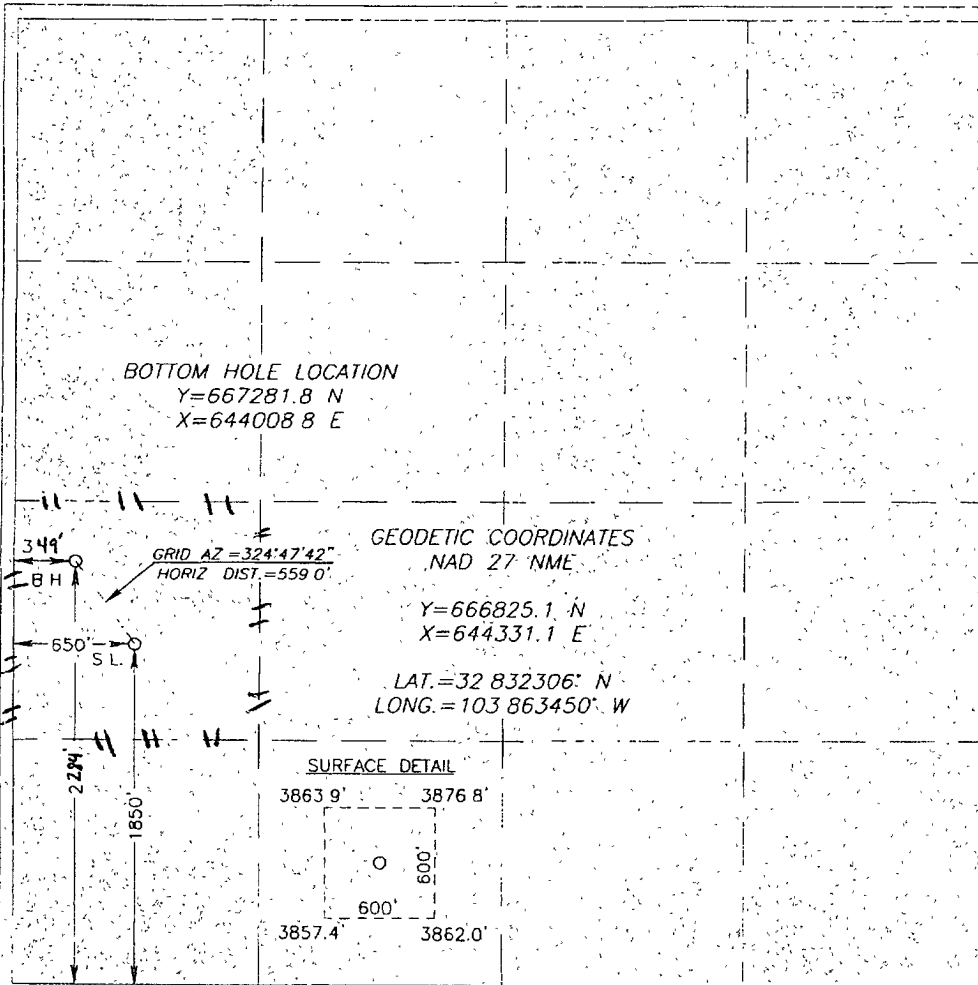
UL or lot No.	Section	Township	Range	Lot Idn	Feet from the	North/South line	Feet from the	East/West line	County
L	15	17-S	31-E		1850	SOUTH	650	WEST	EDDY

Bottom Hole Location If Different From Surface

UL or lot No.	Section	Township	Range	Lot Idn	Feet from the	North/South line	Feet from the	East/West line	County
L	15	17-S	31-E			SOUTH		WEST	EDDY

Dedicated Acres	Joint or Infill	Consolidation Code	Order No
-----------------	-----------------	--------------------	----------

NO ALLOWABLE WILL BE ASSIGNED TO THIS COMPLETION UNTIL ALL INTERESTS HAVE BEEN CONSOLIDATED OR A NON-STANDARD UNIT HAS BEEN APPROVED BY THE DIVISION



OPERATOR CERTIFICATION

I hereby certify that the information herein is true and complete to the best of my knowledge and belief, and that this organization either owns a working interest or unless mineral interest in the land including the proposed bottom hole location or has a right to drill this well at this location pursuant to a contract with an owner of such mineral or working interest, or to a voluntary pooling agreement or a compulsory pooling order heretofore entered by the division.

*[Signature]*  
Signature

Date

Printed Name

SURVEYOR CERTIFICATION

I hereby certify that the well location shown on this plat was plotted from field notes of actual surveys made by me or under my supervision, and that the same is true and correct to the best of my belief

MAY 16 2008

Date Surveyed REV. 5/30/08 AR

Signature & Seal of Professional Surveyor

*[Signature]* 5/30/08

08-410752

Certificate No. GARY EIDSON 12641  
RONALD J. EIDSON 3239