

DISTRICT I  
1625 N. French Dr., Hobbs, NM 88240  
DISTRICT II  
1301 W. Grand Avenue, Artesia, NM 88210  
DISTRICT III  
1000 Rio Brazos Rd., Aztec, NM 87410  
DISTRICT IV  
1220 St. Francis Dr., Santa Fe, NM 87505

State of New Mexico  
Energy, Minerals and Natural Resources Department

Form C-102  
Revised October 12, 2005

Submit to Appropriate District Office  
State Lease - 4 Copies  
Fee Lease - 3 Copies

OIL CONSERVATION DIVISION  
1220 South St. Francis Dr.  
Santa Fe, New Mexico 87505

WELL LOCATION AND ACREAGE DEDICATION PLAT

☐ AMENDED REPORT

API Number	Pool Code	Pool Name
Property Code	Property Name JAMES RANCH UNIT	Well Number 105H
OGRID No.	Operator Name BOPCO, L.P.	Elevation 3311'

Surface Location

UL or lot No.	Section	Township	Range	Lot Idn	Feet from the	North/South line	Feet from the	East/West line	County
F	36	22 S	30 E		2428	NORTH	1340	WEST	EDDY

Bottom Hole Location If Different From Surface

UL or lot No.	Section	Township	Range	Lot Idn	Feet from the	North/South line	Feet from the	East/West line	County
E	35	22 S	30 E		1830	NORTH	660	WEST	EDDY

Dedicated Acres	Joint or Infill	Consolidation Code	Order No.
-----------------	-----------------	--------------------	-----------

NO ALLOWABLE WILL BE ASSIGNED TO THIS COMPLETION UNTIL ALL INTERESTS HAVE BEEN CONSOLIDATED  
OR A NON-STANDARD UNIT HAS BEEN APPROVED BY THE DIVISION

OPERATOR CERTIFICATION

I hereby certify that the information contained herein is true and complete to the best of my knowledge and belief, and that this organization either owns a working interest or unleased mineral interest in the land including the proposed bottom hole location pursuant to a contract with an owner of such a mineral or working interest, or to a voluntary pooling agreement or a compulsory pooling order heretofore entered by the division.

Signature \_\_\_\_\_ Date \_\_\_\_\_

Printed Name \_\_\_\_\_

SURVEYOR CERTIFICATION

I hereby certify that the well location shown on this plat was plotted from field notes of actual surveys made by me or under my supervision, and that the same is true and correct to the best of my belief.

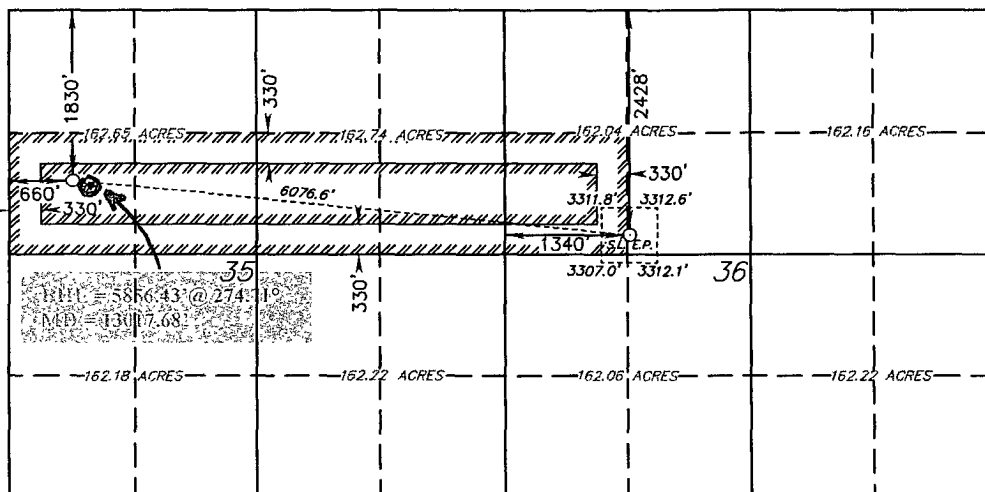
JANUARY 13 2009

Date Surveyed \_\_\_\_\_  
Signature \_\_\_\_\_  
Professional Surveyor

W. C. Thompson 1047

Certificate No. Gary L. Jones 7977

Basin Surveys



**BOTTOM HOLE LOCATION**  
LAT - N32°21'03.04"  
LONG - W103°51'29.42"  
N.: 491694.814  
SPC- E.: 688068.611  
(NAD-83)

**DELAWARE ENTRY POINT**  
LAT - N32°20'57.00"  
LONG - W103°50'18.98"  
N.: 491111.150  
SPC- E.: 694114.013  
(NAD-83)

**SURFACE LOCATION**  
LAT - N32°20'56.98"  
LONG - W103°50'18.95"  
N.: 491109.425  
SPC- E.: 694116.776  
(NAD-83)

SCALE - 1" = 2000'