

# RECEIVED

DEC 16 2009

Form C-402

Revised October 12, 2005

District I  
1625 N. French Dr., Hobbs, NM 88240  
District II  
1301 W. Grand Avenue, Artesia, NM 88210  
District III  
1000 Rio Brazos Rd., Aztec, NM 87410  
District IV  
1220 S. St. Francis Dr., Santa Fe, NM 87505

State of New Mexico  
Energy, Minerals & Natural Resources Department  
OIL CONSERVATION DIVISION  
1220 South St. Francis Dr.  
Santa Fe, NM 87505

Submitted to Appropriate District Office  
**NMOC D ARTESIA**

State Lease- 4 Copies  
Fee Lease- 3 Copies

☒ AMENDED REPORT

## WELL LOCATION AND ACREAGE DEDICATION PLAT

|                                   |                                      |   |
|-----------------------------------|--------------------------------------|---|
| API Number<br><b>30-015-26400</b> | Pool Code<br><b>39360</b>            | Pool Name<br><b>Livingston Ridge Delaware</b> ✓ |
| Property Code<br><b>304816</b>    | Property Name<br><b>FEDERAL 23</b>   | Well Number<br><b>3</b>                         |
| OGRID No.<br><b>16696</b>         | Operator Name<br><b>OXY USA INC.</b> | Elevation<br><b>3539'</b>                       |

## Surface Location

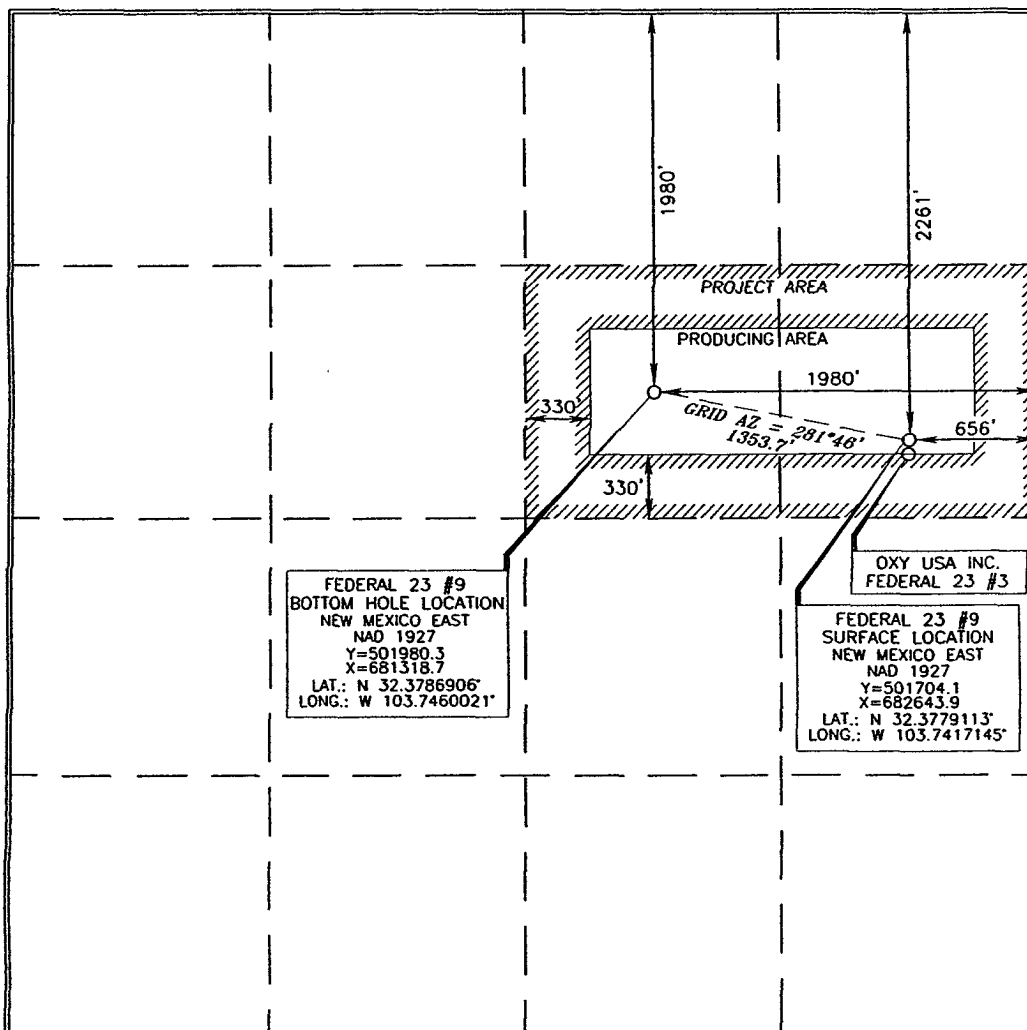
| UL or lot no. | Section   | Township        | Range                    | Lot Idn | Feet from the | North/South line | Feet from the | East/West line | County      |
|---------------|-----------|-----------------|--------------------------|---------|---------------|------------------|---------------|----------------|-------------|
| <b>H</b>      | <b>23</b> | <b>22 SOUTH</b> | <b>31 EAST, N.M.P.M.</b> |         | <b>2310</b>   | <b>NORTH</b>     | <b>660</b>    | <b>EAST</b>    | <b>EDDY</b> |

## Bottom Hole Location If Different From Surface

| UL or lot no. | Section | Township | Range | Lot Idn | Feet from the | North/South line | Feet from the | East/West line | County |
|---------------|---------|----------|-------|---------|---------------|------------------|---------------|----------------|--------|
|               |         |          |       |         |               |                  |               |                |        |

|                              |                             |                    |           |
|------------------------------|-----------------------------|--------------------|-----------|
| Dedicated Acres<br><b>80</b> | Joint or Infill<br><b>Y</b> | Consolidation Code | Order No. |
|------------------------------|-----------------------------|--------------------|-----------|

No allowable will be assigned to this completion until all interests have been consolidated or a non-standard unit has been approved by the division.



## OPERATOR CERTIFICATION

I hereby certify that the information contained herein is true and complete to the best of my knowledge and belief, and that this organization either owns a working interest or unleased mineral interest in the land including the proposed bottom hole location or has a right to drill this well at this location pursuant to a contract with an owner of such a mineral or working interest, or to a voluntary pooling agreement or a compulsory pooling order heretofore entered by the division.

*David Stewart* 12/16/09  
Signature Date

**David Stewart**  
Printed Name

## SURVEYOR CERTIFICATION

I hereby certify that the well location shown on this plat was plotted from field notes of actual surveys made by me or under my supervision, and that the same is true and correct to the best of my belief.

**15079**  
APRIL 8 2009  
Date of Survey

*Terry J. Paul*  
Signature of Professional Surveyor

**15079**  
Certificate Number

Submit to Appropriate  
District Office  
State Lease - 4 copies  
Fee Lease - 3 copies

State of New Mexico  
Geology, Minerals and Natural Resources Department

Form C-102  
Revised 1-1-89

OIL CONSERVATION DIVISION

P.O. Box 2088

Santa Fe, New Mexico 87504-2088

DISTRICT I

P.O. Box 1980, Hobbs, NM 88240

DISTRICT II

P.O. Drawer DD, Artesia, NM 88210

DISTRICT III

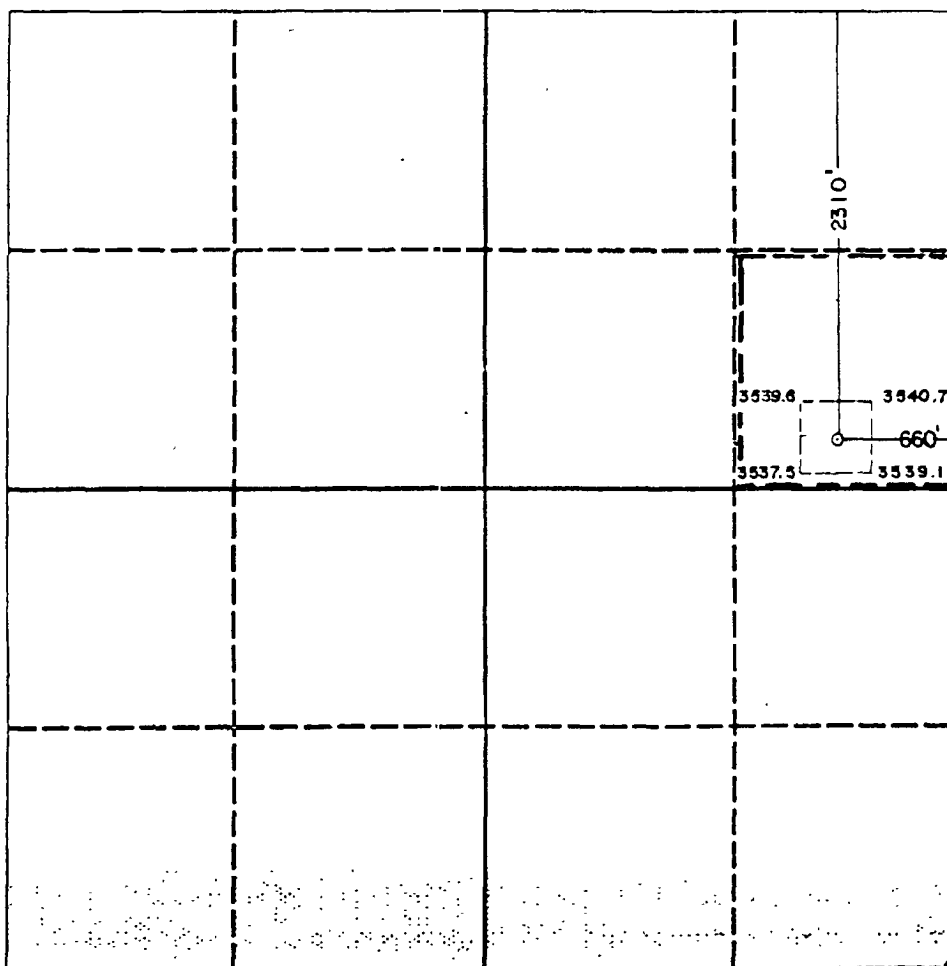
1000 Rio Brazos Rd., Aztec, NM 87410

WELL LOCATION AND ACREAGE DEDICATION PLAT

All Distances must be from the outer boundaries of the section

|   |                                      |                      |  |                                |               |
|---|--------------------------------------|----------------------|--|--------------------------------|---------------|
| Operator<br>POGO PRODUCING COMPANY  |                                      |                      | Lease<br>FEDERAL 23                      |                                | Well No.<br>3 |
| Unit Letter<br>H  | Section<br>23                        | Township<br>22 SOUTH | Range<br>31 EAST                         | County<br>NMPM EDDY            |               |
| Actual Footage Location of Well:<br>2310 feet from the NORTH line and 660 feet from the EAST line |                                      |                      |  |                                |               |
| Ground level Elev.<br>3538.7  | Producing Formation<br>BRUSHY CANYON |                      | Pool<br>UNDES. LIVINGSTON RIDGE DELAWARE | Dedicated Acreage:<br>40 Acres |               |

1. Outline the acreage dedicated to the subject well by colored pencil or hatchure marks on the plat below.
2. If more than one lease is dedicated to the well, outline each and identify the ownership thereof (both as to working interest and royalty).
3. If more than one lease of different ownership is dedicated to the well, have the interest of all owners been consolidated by communitization, unitization, force-pooling, etc.?  
☐ Yes ☐ No If answer is "yes" type of consolidation \_\_\_\_\_  
If answer is "no" list the owners and tract descriptions which have actually been consolidated. (Use reverse side of this form if necessary.)  
No allowable will be assigned to the well until all interests have been consolidated (by communitization, unitization, forced-pooling, or otherwise) or until a non-standard unit, eliminating such interest, has been approved by the Division.



OPERATOR CERTIFICATION

I hereby certify that the information contained herein is true and complete to the best of my knowledge and belief.

Signature \_\_\_\_\_

Printed Name

Richard L. Wright

Position

Drilling and Prod. Supt.

Company

POGO PRODUCING COMPANY

Date

May 8, 1991

SURVEYOR CERTIFICATION

I hereby certify that the well location shown on this plat was plotted from field notes of actual surveys made by me or under my supervision, and that the same is true and correct to the best of my knowledge and belief.

Date Surveyed

5-8-91

Signature & Seal of Professional Surveyor

\_\_\_\_\_  
Certification No. \_\_\_\_\_

RONALD J. EIDSON, 3239