

District I
1625 N. French Dr., Hobbs, NM 88240
District II
1301 W. Grand Avenue, Artesia, NM 88210
District III
1000 Rio Brazos Road, Aztec, NM 87410
District IV
1220 S. St. Francis Dr., Santa Fe, NM 87505

State of New Mexico
Energy Minerals and Natural Resources
Department
Oil Conservation Division
1220 South St. Francis Dr.
Santa Fe, NM 87505

Form C-144 CLEZ
July 21, 2008

For closed-loop systems that only use above ground steel tanks or haul-off bins and propose to implement waste removal for closure, submit to the appropriate NMOCD District Office.

Closed-Loop System Permit or Closure Plan Application

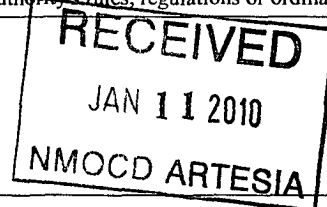
(that only use above ground steel tanks or haul-off bins and propose to implement waste removal for closure)

Type of action: ☒ Permit ☐ Closure

Instructions: Please submit one application (Form C-144 CLEZ) per individual closed-loop system request. For any application request other than for a closed-loop system that only use above ground steel tanks or haul-off bins and propose to implement waste removal for closure, please submit a Form C-144.

Please be advised that approval of this request does not relieve the operator of liability should operations result in pollution of surface water, ground water or the environment. Nor does approval relieve the operator of its responsibility to comply with any other applicable governmental authority's rules, regulations or ordinances.

1.
Operator: Yates Petroleum Corporation OGRID #: 025575
Address: 105 South Fourth Street, Artesia, New Mexico 88210
Facility or well name: Martha AIK Federal #9
API Number: 30-015-37512 OCD Permit Number: 209898
U/L or Qtr/Qtr O Section 11 Township 22S Range 31E County: Eddy
Center of Proposed Design: Latitude N32.400885 Longitude W103.744920 NAD: ☒ 1927 ☐ 1983
Surface Owner: ☒ Federal ☐ State ☐ Private ☐ Tribal Trust or Indian Allotment



2.
☒ **Closed-loop System:** Subsection H of 19.15.17.11 NMAC
Operation: ☒ Drilling a new well ☐ Workover or Drilling (Applies to activities which require prior approval of a permit or notice of intent) ☐ P&A
☐ Above Ground Steel Tanks or ☒ Haul-off Bins

3.
Signs: Subsection C of 19.15.17.11 NMAC
☐ 12"x 24", 2" lettering, providing Operator's name, site location, and emergency telephone numbers
☒ Signed in compliance with 19.15.3.103 NMAC

4.
Closed-loop Systems Permit Application Attachment Checklist: Subsection B of 19.15.17.9 NMAC
Instructions: Each of the following items must be attached to the application. Please indicate, by a check mark in the box, that the documents are attached.
☒ Design Plan - based upon the appropriate requirements of 19.15.17.11 NMAC
☒ Operating and Maintenance Plan - based upon the appropriate requirements of 19.15.17.12 NMAC
☒ Closure Plan (Please complete Box 5) - based upon the appropriate requirements of Subsection C of 19.15.17.9 NMAC and 19.15.17.13 NMAC
☐ Previously Approved Design (attach copy of design) - API Number: _____
☐ Previously Approved Operating and Maintenance Plan - API Number: _____

5.
Waste Removal Closure For Closed-loop Systems That Utilize Above Ground Steel Tanks or Haul-off Bins Only: (19.15.17.13.D NMAC)
Instructions: Please identify the facility or facilities for the disposal of liquids, drilling fluids and drill cuttings. Use attachment if more than two facilities are required.
Disposal Facility Name: Gandy Marley Disposal Facility Permit Number: NM-01-0019
Disposal Facility Name: Lea Land Farm Disposal Facility Permit Number: WM-1-035
Disposal Facility Name: CRI Disposal Facility Permit Number: R-9166
Will any of the proposed closed-loop system operations and associated activities occur on or in areas that will not be used for future service and operations?
☐ Yes (If yes, please provide the information below) ☒ No
Required for impacted areas which will not be used for future service and operations:
☐ Soil Backfill and Cover Design Specifications - based upon the appropriate requirements of Subsection H of 19.15.17.13 NMAC
☐ Re-vegetation Plan - based upon the appropriate requirements of Subsection I of 19.15.17.13 NMAC
☐ Site Reclamation Plan - based upon the appropriate requirements of Subsection G of 19.15.17.13 NMAC

6. **Operator Application Certification:**

I hereby certify that the information submitted with this application is true, accurate and complete to the best of my knowledge and belief.

Name (Print): Cy Cowan

Title: Regulatory Agent

Signature: [Signature]

Date: 9/3/08

e-mail address: cy@ypcnm.com

Telephone: 575-748-4372

7. **OCD Approval:** ☒ Permit Application (including closure plan) ☐ Closure Plan (only)

OCD Representative Signature: [Signature] Approval Date: 01/26/2010

Title: DIST II Supervisor

OCD Permit Number: 209898

8. **Closure Report (required within 60 days of closure completion):** Subsection K of 19.15.17.13 NMAC

Instructions: Operators are required to obtain an approved closure plan prior to implementing any closure activities and submitting the closure report. The closure report is required to be submitted to the division within 60 days of the completion of the closure activities. Please do not complete this section of the form until an approved closure plan has been obtained and the closure activities have been completed.

☐ Closure Completion Date: _____

9. **Closure Report Regarding Waste Removal Closure For Closed-loop Systems That Utilize Above Ground Steel Tanks or Haul-off Bins Only:**

Instructions: Please indentify the facility or facilities for where the liquids, drilling fluids and drill cuttings were disposed. Use attachment if more than two facilities were utilized.

Disposal Facility Name: _____ Disposal Facility Permit Number: _____

Disposal Facility Name: _____ Disposal Facility Permit Number: _____

Were the closed-loop system operations and associated activities performed on or in areas that *will not* be used for future service and operations?

☐ Yes (If yes, please demonstrate compliance to the items below) ☐ No

Required for impacted areas which will not be used for future service and operations:

☐ Site Reclamation (Photo Documentation)

☐ Soil Backfilling and Cover Installation

☐ Re-vegetation Application Rates and Seeding Technique

10. **Operator Closure Certification:**

I hereby certify that the information and attachments submitted with this closure report is true, accurate and complete to the best of my knowledge and belief. I also certify that the closure complies with all applicable closure requirements and conditions specified in the approved closure plan.

Name (Print): _____ Title: _____

Signature: _____ Date: _____

e-mail address: _____ Telephone: _____

Yates Petroleum Corporation

Closed Loop System

Equipment Design Plan

Closed Loop System will consist of:

1 – double panel shale shaker

1 – (minimum) Centrifuge, certain wells and flow rates may require 2 centrifuges

On certain wells, the Centrifuge will be replaced by a Clackco Settling Tank System

1 – minimum centrifugal pump to transfer fluids

2- 500 bbl. FW Tanks

1 – 500 bbl. BW Tank

1 – half round frac tank – 250 bbl. capacity as necessary to catch cement / excess mud returns generated during a cement job.

1 Set of rail cars / catch bins

Certain wells will use an ASC Auger Tank

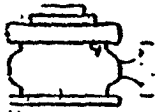
Operation Plan

All equipment will be inspected at least hourly by rig personnel and daily by contractors personnel.

Any spills / leaks will be reported to YPC, NMOCD, and cleaned up without delay.

Closure Plan

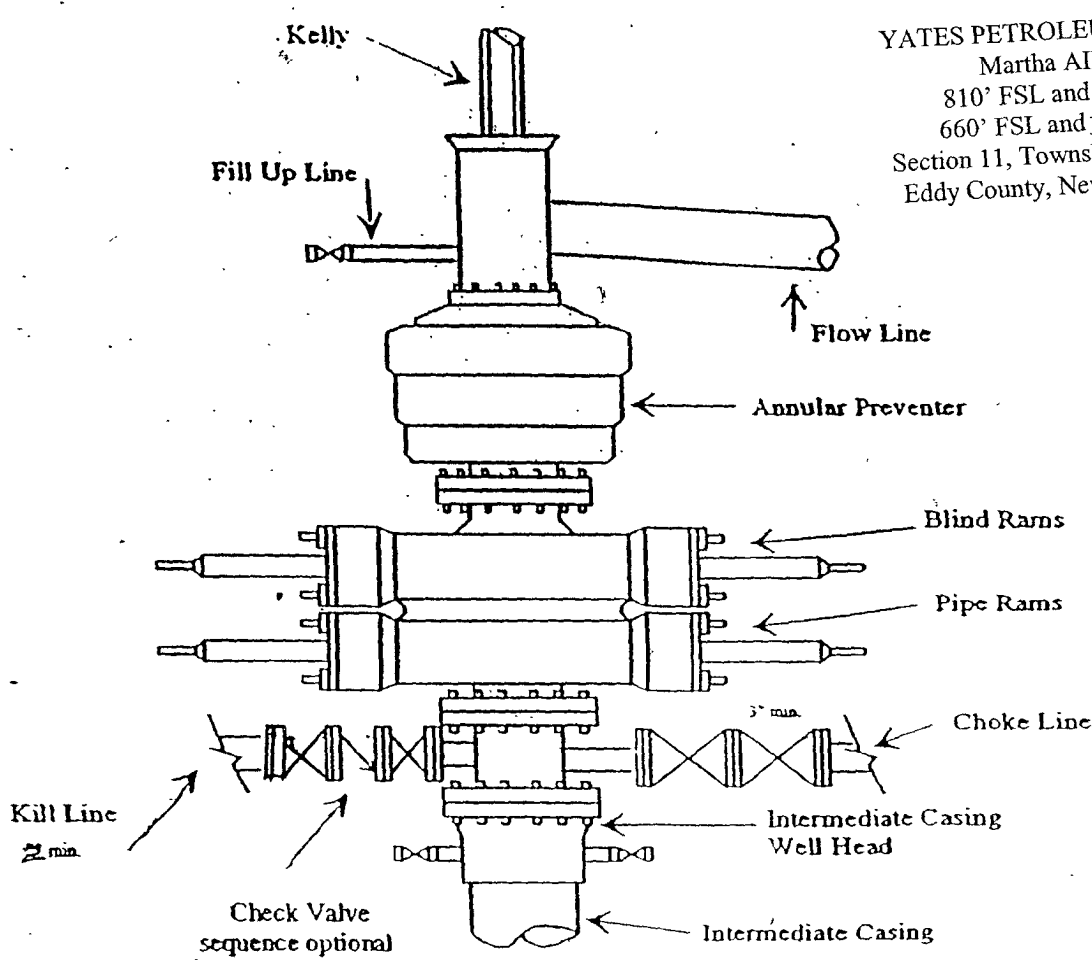
Drilling with Closed Loop System, haul off bins will be taken to Gandy Marley, Lea Land Farm or CRI.



Yates Petroleum Corporation

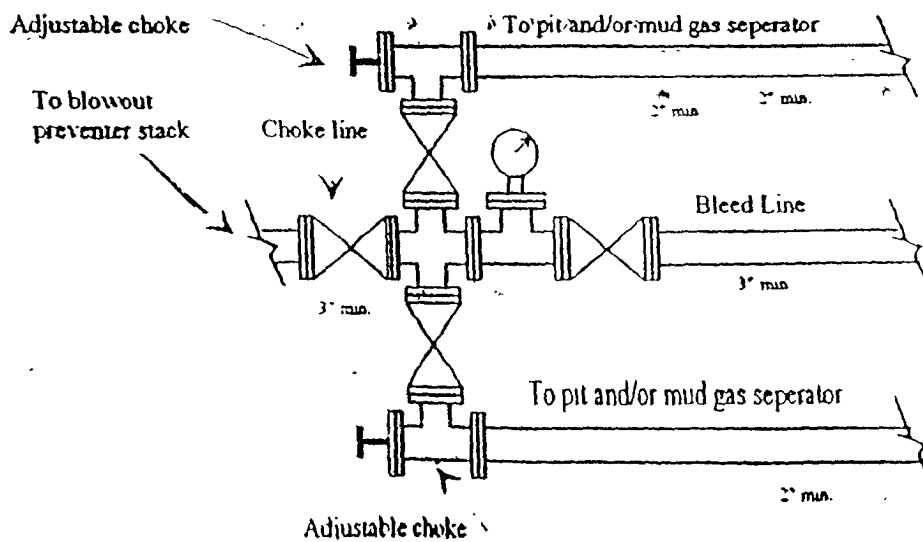
BOP-3

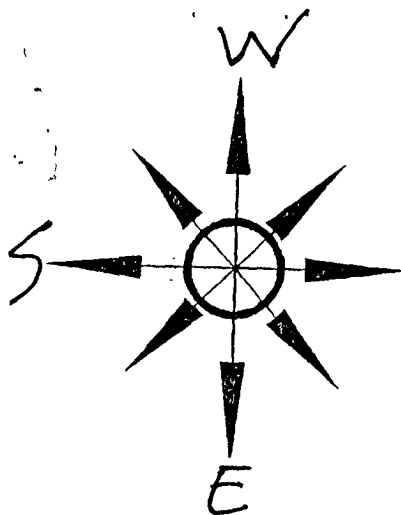
Typical 3,000 psi Pressure System Schematic Annular with Double Ram Preventer Stack



YATES PETROLEUM CORPORATION
Martha AIK Federal #9
810' FSL and 1650' FEL SHL
660' FSL and 1650' FWL BHL
Section 11, Township 22S Range 31East
Eddy County, New Mexico Exhibit C

Typical 3,000 psi choke manifold assembly with at least these minimum features

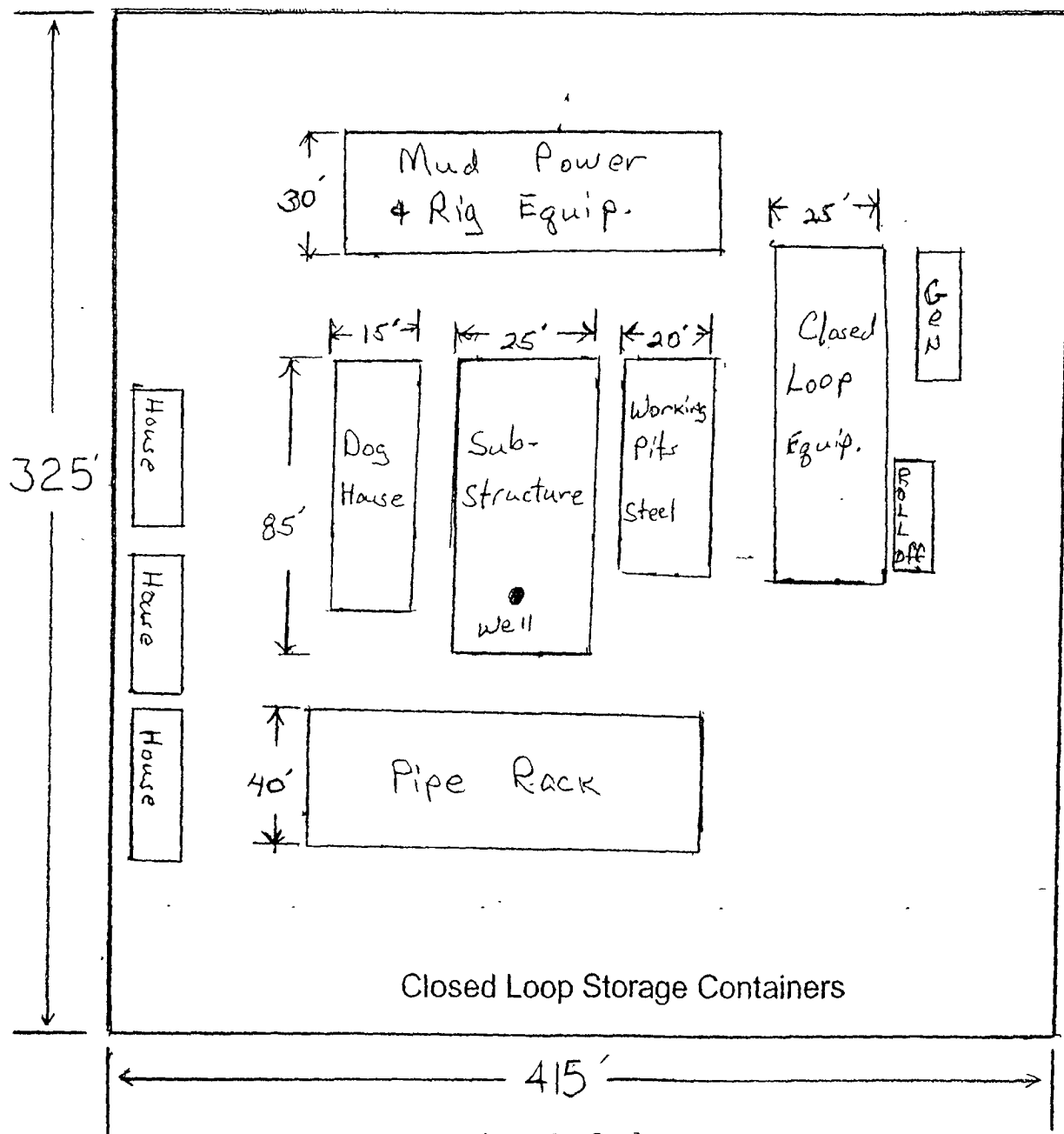




Yates Petroleum Corporation
Location Layout for Permian Basin

YATES PETROLEUM CORPORATION
Martha AIK Federal #9
810' FSL and 1650' FEL SHL
660' FSL and 1650' FWL BHL
Section 11, Township 22S Range 31East
Eddy County, New Mexico Exhibit B

Closed Loop Design Plan



*Not To Scale