

4625 N. French Dr., Hobbs, NM 88240  
District II  
1301 W. Grand Avenue, Artesia, NM 88210  
District III  
1000 Rio Brazos Road, Aztec, NM 87410  
District IV  
1220 S. St. Francis Dr., Santa Fe, NM 87505

Energy Minerals and Natural Resources  
Department  
Oil Conservation Division  
1220 South St. Francis Dr.  
Santa Fe, NM 87505

July 21, 2000  
For temporary pits, closed-loop systems, and below-grade tanks, submit to the appropriate NMOCD District Office.  
For permanent pits and exceptions submit to the Santa Fe Environmental Bureau office and provide a copy to the appropriate NMOCD District Office.

Pit, Closed-Loop System, Below-Grade Tank, or  
Proposed Alternative Method Permit or Closure Plan Application

Type of action: ☐ Permit of a pit, closed-loop system, below-grade tank, or proposed alternative method  
☐ Closure of a pit, closed-loop system, below-grade tank, or proposed alternative method  
☐ Modification to an existing permit  
☒ Closure plan only submitted for an existing permitted or non-permitted pit, closed-loop system, below-grade tank, or proposed alternative method

**Instructions:** Please submit one application (Form C-144) per individual pit, closed-loop system, below-grade tank or alternative request.

Please be advised that approval of this request does not relieve the operator of liability should operations result in pollution of surface water, ground water or the environment. Nor does approval relieve the operator of its responsibility to comply with any other applicable governmental authority's rules, regulations or ordinances.

1. Operator: VF Petroleum OGRID #: \_\_\_\_\_  
Address: P.O. Box 1889 Midland, Texas 79702  
Facility or well name: Sundance 16 State #1  
API Number: 30-005-34091 OCD Permit Number: \_\_\_\_\_  
U/L or Qtr/Qtr A Section 16 Township 24S Range 31E County: Eddy  
Center of Proposed Design: Latitude \_\_\_\_\_ Longitude \_\_\_\_\_ NAD: ☐ 1927 ☐ 1983  
Surface Owner: ☐ Federal ☒ State ☐ Private ☐ Tribal Trust or Indian Allotment

2. ☒ **Pit:** Subsection F or G of 19.15.17.11 NMAC  
Temporary: ☒ Drilling ☐ Workover  
☐ Permanent ☐ Emergency ☐ Cavitation ☐ P&A  
☒ Lined ☐ Unlined Liner type: Thickness 20 mil ☐ LLDPE ☐ HDPE ☐ PVC ☐ Other \_\_\_\_\_  
☐ String-Reinforced  
Liner Seams: ☐ Welded ☐ Factory ☐ Other \_\_\_\_\_ Volume: \_\_\_\_\_ bbl Dimensions: L \_\_\_\_\_ x W \_\_\_\_\_ x D \_\_\_\_\_

3. ☐ **Closed-loop System:** Subsection H of 19.15.17.11 NMAC  
Type of Operation: ☐ P&A ☐ Drilling a new well ☐ Workover or Drilling (Applies to activities which require prior approval of a permit or notice of intent)  
☐ Drying Pad ☐ Above Ground Steel Tanks ☐ Haul-off Bins ☐ Other \_\_\_\_\_  
☐ Lined ☐ Unlined Liner type: Thickness \_\_\_\_\_ mil ☐ LLDPE ☐ HDPE ☐ PVC ☐ Other \_\_\_\_\_  
Liner Seams: ☐ Welded ☐ Factory ☐ Other \_\_\_\_\_

4. ☐ **Below-grade tank:** Subsection I of 19.15.17.11 NMAC  
Volume: \_\_\_\_\_ bbl Type of fluid: \_\_\_\_\_  
Tank Construction material: \_\_\_\_\_  
☐ Secondary containment with leak detection ☐ Visible sidewalls, liner, 6-inch lift and automatic overflow shut-off  
☐ Visible sidewalls and liner ☐ Visible sidewalls only ☐ Other \_\_\_\_\_  
Liner type: Thickness \_\_\_\_\_ mil ☐ HDPE ☐ PVC ☐ Other \_\_\_\_\_

5. ☐ **Alternative Method:**  
Submittal of an exception request is required. Exceptions must be submitted to the Santa Fe Environmental Bureau office for consideration of approval.

Form C-144

Oil Conservation Division

Rule 50 permitted

6.

**Fencing:** Subsection D of 19.15.17.11 NMAC (*Applies to permanent pits, temporary pits, and below-grade tanks*)☐ Chain link, six feet in height, two strands of barbed wire at top (*Required if located within 1000 feet of a permanent residence, school, hospital, institution or church*)☐ Four foot height, four strands of barbed wire evenly spaced between one and four feet☐ Alternate. Please specify \_\_\_\_\_

7.

**Netting:** Subsection E of 19.15.17.11 NMAC (*Applies to permanent pits and permanent open top tanks*)☐ Screen ☐ Netting ☐ Other \_\_\_\_\_☐ Monthly inspections (If netting or screening is not physically feasible)

8.

**Signs:** Subsection C of 19.15.17.11 NMAC☐ 12"x 24", 2" lettering, providing Operator's name, site location, and emergency telephone numbers☒ Signed in compliance with 19.15.3.103 NMAC

9.

**Administrative Approvals and Exceptions:**

Justifications and/or demonstrations of equivalency are required. Please refer to 19.15.17 NMAC for guidance.

**Please check a box if one or more of the following is requested, if not leave blank:**☐ Administrative approval(s): Requests must be submitted to the appropriate division district or the Santa Fe Environmental Bureau office for consideration of approval.☐ Exception(s): Requests must be submitted to the Santa Fe Environmental Bureau office for consideration of approval.

10.

**Siting Criteria (regarding permitting):** 19.15.17.10 NMAC**Instructions:** The applicant must demonstrate compliance for each siting criteria below in the application. Recommendations of acceptable source material are provided below. Requests regarding changes to certain siting criteria may require administrative approval from the appropriate district office or may be considered an exception which must be submitted to the Santa Fe Environmental Bureau office for consideration of approval. Applicant must attach justification for request. Please refer to 19.15.17.10 NMAC for guidance. Siting criteria does not apply to drying pads or above-grade tanks associated with a closed-loop system.

Ground water is less than 50 feet below the bottom of the temporary pit, permanent pit, or below-grade tank.

- NM Office of the State Engineer - iWATERS database search; USGS; Data obtained from nearby wells

☐ Yes ☐ No

Within 300 feet of a continuously flowing watercourse, or 200 feet of any other significant watercourse or lakebed, sinkhole, or playa lake (measured from the ordinary high-water mark).

- Topographic map; Visual inspection (certification) of the proposed site

☐ Yes ☐ No

Within 300 feet from a permanent residence, school, hospital, institution, or church in existence at the time of initial application.

*(Applies to temporary, emergency, or cavitation pits and below-grade tanks)*

- Visual inspection (certification) of the proposed site; Aerial photo; Satellite image

☐ Yes ☐ No☐ NA

Within 1000 feet from a permanent residence, school, hospital, institution, or church in existence at the time of initial application.

*(Applies to permanent pits)*

- Visual inspection (certification) of the proposed site; Aerial photo; Satellite image

☐ Yes ☐ No☐ NA

Within 500 horizontal feet of a private, domestic fresh water well or spring that less than five households use for domestic or stock watering purposes, or within 1000 horizontal feet of any other fresh water well or spring, in existence at the time of initial application.

- NM Office of the State Engineer - iWATERS database search; Visual inspection (certification) of the proposed site

☐ Yes ☐ No

Within incorporated municipal boundaries or within a defined municipal fresh water well field covered under a municipal ordinance adopted pursuant to NMSA 1978, Section 3-27-3, as amended.

- Written confirmation or verification from the municipality; Written approval obtained from the municipality

☐ Yes ☐ No

Within 500 feet of a wetland.

- US Fish and Wildlife Wetland Identification map; Topographic map; Visual inspection (certification) of the proposed site

☐ Yes ☐ No

Within the area overlying a subsurface mine.

- Written confirmation or verification or map from the NM EMNRD-Mining and Mineral Division

☐ Yes ☐ No

Within an unstable area.

- Engineering measures incorporated into the design; NM Bureau of Geology &amp; Mineral Resources; USGS; NM Geological Society; Topographic map

☐ Yes ☐ No

Within a 100-year floodplain.

- FEMA map

☐ Yes ☐ No

11.

**Temporary Pits, Emergency Pits, and Below-grade Tanks Permit Application Attachment Checklist:** Subsection B of 19.15.17.9 NMAC**Instructions:** Each of the following items must be attached to the application. Please indicate, by a check mark in the box, that the documents are attached.

- ☐ Hydrogeologic Report (Below-grade Tanks) - based upon the requirements of Paragraph (4) of Subsection B of 19.15.17.9 NMAC  
☐ Hydrogeologic Data (Temporary and Emergency Pits) - based upon the requirements of Paragraph (2) of Subsection B of 19.15.17.9 NMAC  
☒ Siting Criteria Compliance Demonstrations - based upon the appropriate requirements of 19.15.17.10 NMAC  
☒ Design Plan - based upon the appropriate requirements of 19.15.17.11 NMAC  
☐ Operating and Maintenance Plan - based upon the appropriate requirements of 19.15.17.12 NMAC  
☒ Closure Plan (Please complete Boxes 14 through 18, if applicable) - based upon the appropriate requirements of Subsection C of 19.15.17.9 NMAC and 19.15.17.13 NMAC  
☐ Previously Approved Design (attach copy of design) API Number: \_\_\_\_\_ or Permit Number: \_\_\_\_\_

12.

**Closed-loop Systems Permit Application Attachment Checklist:** Subsection B of 19.15.17.9 NMAC**Instructions:** Each of the following items must be attached to the application. Please indicate, by a check mark in the box, that the documents are attached.

- ☐ Geologic and Hydrogeologic Data (only for on-site closure) - based upon the requirements of Paragraph (3) of Subsection B of 19.15.17.9  
☐ Siting Criteria Compliance Demonstrations (only for on-site closure) - based upon the appropriate requirements of 19.15.17.10 NMAC  
☐ Design Plan - based upon the appropriate requirements of 19.15.17.11 NMAC  
☐ Operating and Maintenance Plan - based upon the appropriate requirements of 19.15.17.12 NMAC  
☐ Closure Plan (Please complete Boxes 14 through 18, if applicable) - based upon the appropriate requirements of Subsection C of 19.15.17.9 NMAC and 19.15.17.13 NMAC  
☐ Previously Approved Design (attach copy of design) API Number: \_\_\_\_\_  
☐ Previously Approved Operating and Maintenance Plan API Number: \_\_\_\_\_ (Applies only to closed-loop system that use above ground steel tanks or haul-off bins and propose to implement waste removal for closure)

13.

**Permanent Pits Permit Application Checklist:** Subsection B of 19.15.17.9 NMAC**Instructions:** Each of the following items must be attached to the application. Please indicate, by a check mark in the box, that the documents are attached.

- ☐ Hydrogeologic Report - based upon the requirements of Paragraph (1) of Subsection B of 19.15.17.9 NMAC  
☐ Siting Criteria Compliance Demonstrations - based upon the appropriate requirements of 19.15.17.10 NMAC  
☐ Climatological Factors Assessment  
☐ Certified Engineering Design Plans - based upon the appropriate requirements of 19.15.17.11 NMAC  
☐ Dike Protection and Structural Integrity Design - based upon the appropriate requirements of 19.15.17.11 NMAC  
☐ Leak Detection Design - based upon the appropriate requirements of 19.15.17.11 NMAC  
☐ Liner Specifications and Compatibility Assessment - based upon the appropriate requirements of 19.15.17.11 NMAC  
☐ Quality Control/Quality Assurance Construction and Installation Plan  
☐ Operating and Maintenance Plan - based upon the appropriate requirements of 19.15.17.12 NMAC  
☐ Freeboard and Overtopping Prevention Plan - based upon the appropriate requirements of 19.15.17.11 NMAC  
☐ Nuisance or Hazardous Odors, including H<sub>2</sub>S, Prevention Plan  
☐ Emergency Response Plan  
☐ Oil Field Waste Stream Characterization  
☐ Monitoring and Inspection Plan  
☐ Erosion Control Plan  
☐ Closure Plan - based upon the appropriate requirements of Subsection C of 19.15.17.9 NMAC and 19.15.17.13 NMAC

14.

**Proposed Closure:** 19.15.17.13 NMAC**Instructions:** Please complete the applicable boxes, Boxes 14 through 18, in regards to the proposed closure plan.

Type: ☒ Drilling ☐ Workover ☐ Emergency ☐ Cavitation ☐ P&A ☐ Permanent Pit ☐ Below-grade Tank ☐ Closed-loop System  
☐ Alternative

Proposed Closure Method: ☐ Waste Excavation and Removal  
☐ Waste Removal (Closed-loop systems only)  
☒ On-site Closure Method (Only for temporary pits and closed-loop systems)  
☐ In-place Burial ☒ On-site Trench Burial  
☐ Alternative Closure Method (Exceptions must be submitted to the Santa Fe Environmental Bureau for consideration)

15.

**Waste Excavation and Removal Closure Plan Checklist:** (19.15.17.13 NMAC) **Instructions:** Each of the following items must be attached to the closure plan. Please indicate, by a check mark in the box, that the documents are attached.

- ☐ Protocols and Procedures - based upon the appropriate requirements of 19.15.17.13 NMAC  
☐ Confirmation Sampling Plan (if applicable) - based upon the appropriate requirements of Subsection F of 19.15.17.13 NMAC  
☐ Disposal Facility Name and Permit Number (for liquids, drilling fluids and drill cuttings)  
☐ Soil Backfill and Cover Design Specifications - based upon the appropriate requirements of Subsection H of 19.15.17.13 NMAC  
☐ Re-vegetation Plan - based upon the appropriate requirements of Subsection I of 19.15.17.13 NMAC  
☐ Site Reclamation Plan - based upon the appropriate requirements of Subsection G of 19.15.17.13 NMAC

16.

**Waste Removal Closure For Closed-loop Systems That Utilize Above Ground Steel Tanks or Haul-off Bins Only:** (19.15.17.13.D NMAC)**Instructions:** Please identify the facility or facilities for the disposal of liquids, drilling fluids and drill cuttings. Use attachment if more than two facilities are required.

Disposal Facility Name: \_\_\_\_\_ Disposal Facility Permit Number: \_\_\_\_\_

Disposal Facility Name: \_\_\_\_\_ Disposal Facility Permit Number: \_\_\_\_\_

Will any of the proposed closed-loop system operations and associated activities occur on or in areas that *will not* be used for future service and operations?☐ Yes (If yes, please provide the information below) ☐ No*Required for impacted areas which will not be used for future service and operations:*☐ Soil Backfill and Cover Design Specifications - based upon the appropriate requirements of Subsection H of 19.15.17.13 NMAC☐ Re-vegetation Plan - based upon the appropriate requirements of Subsection I of 19.15.17.13 NMAC☐ Site Reclamation Plan - based upon the appropriate requirements of Subsection G of 19.15.17.13 NMAC

17.

**Siting Criteria (regarding on-site closure methods only):** 19.15.17.10 NMAC**Instructions:** Each siting criteria requires a demonstration of compliance in the closure plan. Recommendations of acceptable source material are provided below. Requests regarding changes to certain siting criteria may require administrative approval from the appropriate district office or may be considered an exception which must be submitted to the Santa Fe Environmental Bureau office for consideration of approval. Justifications and/or demonstrations of equivalency are required. Please refer to 19.15.17.10 NMAC for guidance.

Ground water is less than 50 feet below the bottom of the buried waste.

- NM Office of the State Engineer - iWATERS database search; USGS; Data obtained from nearby wells

☐ Yes ☒ No☐ NA

Ground water is between 50 and 100 feet below the bottom of the buried waste

- NM Office of the State Engineer - iWATERS database search; USGS; Data obtained from nearby wells

☐ Yes ☒ No☐ NA

Ground water is more than 100 feet below the bottom of the buried waste.

- NM Office of the State Engineer - iWATERS database search; USGS; Data obtained from nearby wells

☒ Yes ☐ No☐ NA

Within 300 feet of a continuously flowing watercourse, or 200 feet of any other significant watercourse or lakebed, sinkhole, or playa lake (measured from the ordinary high-water mark).

- Topographic map; Visual inspection (certification) of the proposed site

☐ Yes ☒ No☐ NA

Within 300 feet from a permanent residence, school, hospital, institution, or church in existence at the time of initial application.

- Visual inspection (certification) of the proposed site; Aerial photo; Satellite image

☐ Yes ☒ No☐ NA

Within 500 horizontal feet of a private, domestic fresh water well or spring that less than five households use for domestic or stock watering purposes, or within 1000 horizontal feet of any other fresh water well or spring, in existence at the time of initial application.

- NM Office of the State Engineer - iWATERS database; Visual inspection (certification) of the proposed site

☐ Yes ☒ No☐ NA

Within incorporated municipal boundaries or within a defined municipal fresh water well field covered under a municipal ordinance adopted pursuant to NMSA 1978, Section 3-27-3, as amended.

- Written confirmation or verification from the municipality; Written approval obtained from the municipality

☐ Yes ☐ No

Within 500 feet of a wetland.

- US Fish and Wildlife Wetland Identification map; Topographic map; Visual inspection (certification) of the proposed site

☐ Yes ☒ No☐ NA

Within the area overlying a subsurface mine.

- Written confirmation or verification or map from the NM BMNRD-Mining and Mineral Division

☐ Yes ☒ No☐ NA

Within an unstable area.

- Engineering measures incorporated into the design; NM Bureau of Geology &amp; Mineral Resources; USGS; NM Geological Society; Topographic map

☐ Yes ☒ No☐ NA

Within a 100-year floodplain.

- FEMA map

☐ Yes ☐ No☐ NA

18.

**On-Site Closure Plan Checklist:** (19.15.17.13 NMAC) **Instructions:** Each of the following items must be attached to the closure plan. Please indicate, by a check mark in the box, that the documents are attached.☒ Siting Criteria Compliance Demonstrations - based upon the appropriate requirements of 19.15.17.10 NMAC☒ Proof of Surface Owner Notice - based upon the appropriate requirements of Subsection F of 19.15.17.13 NMAC☒ Construction/Design Plan of Burial Trench (if applicable) based upon the appropriate requirements of 19.15.17.11 NMAC☐ Construction/Design Plan of Temporary Pit (for in-place burial of a drying pad) - based upon the appropriate requirements of 19.15.17.11 NMAC☐ Protocols and Procedures - based upon the appropriate requirements of 19.15.17.13 NMAC☒ Confirmation Sampling Plan (if applicable) - based upon the appropriate requirements of Subsection F of 19.15.17.13 NMAC☒ Waste Material Sampling Plan - based upon the appropriate requirements of Subsection F of 19.15.17.13 NMAC☒ Disposal Facility Name and Permit Number (for liquids, drilling fluids and drill cuttings or in case on-site closure standards cannot be achieved)☒ Soil Cover Design - based upon the appropriate requirements of Subsection H of 19.15.17.13 NMAC☒ Re-vegetation Plan - based upon the appropriate requirements of Subsection I of 19.15.17.13 NMAC☐ Site Reclamation Plan - based upon the appropriate requirements of Subsection G of 19.15.17.13 NMAC

19.  
**Operator Application Certification:**  
I hereby certify that the information submitted with this application is true, accurate and complete to the best of my knowledge and belief.

X Name (Print): Wayne Luna Title: SUPERINTENDENT

Signature: [Signature] Date: 1-27-10

e-mail address: \_\_\_\_\_ Telephone: 432-557-2688

20.  
**OCD Approval:** ☐ Permit Application (including closure plan) ☒ Closure Plan (only) ☒ OCD Conditions (see attachment)

OCD Representative Signature: Signed By [Signature] Approval Date: MAR 17 2010

Title: Env. Spec. OCD Permit Number: \_\_\_\_\_

21.  
**Closure Report (required within 60 days of closure completion):** Subsection K of 19.15.17.13 NMAC  
*Instructions: Operators are required to obtain an approved closure plan prior to implementing any closure activities and submitting the closure report. The closure report is required to be submitted to the division within 60 days of the completion of the closure activities. Please do not complete this section of the form until an approved closure plan has been obtained and the closure activities have been completed.*

☐ Closure Completion Date: \_\_\_\_\_

22.  
**Closure Method:**  
☐ Waste Excavation and Removal ☐ On-Site Closure Method ☐ Alternative Closure Method ☐ Waste Removal (Closed-loop systems only)  
☐ If different from approved plan, please explain.

23.  
**Closure Report Regarding Waste Removal Closure For Closed-loop Systems That Utilize Above Ground Steel Tanks or Haul-off Rins Only:**  
*Instructions: Please identify the facility or facilities where the liquids, drilling fluids and drill cuttings were disposed. Use attachment if more than two facilities were utilized.*

Disposal Facility Name: \_\_\_\_\_ Disposal Facility Permit Number: \_\_\_\_\_

Disposal Facility Name: \_\_\_\_\_ Disposal Facility Permit Number: \_\_\_\_\_

Were the closed-loop system operations and associated activities performed on or in areas that will not be used for future service and operations?  
☐ Yes (If yes, please demonstrate compliance to the items below) ☐ No

Required for impacted areas which will not be used for future service and operations:  
☐ Site Reclamation (Photo Documentation)  
☐ Soil Backfilling and Cover Installation  
☐ Re-vegetation Application Rates and Seeding Technique

24.  
**Closure Report Attachment Checklist:** *Instructions: Each of the following items must be attached to the closure report. Please indicate, by a check mark in the box, that the documents are attached.*

☐ Proof of Closure Notice (surface owner and division)  
☐ Proof of Deed Notice (required for on-site closure)  
☐ Plot Plan (for on-site closures and temporary pits)  
☐ Confirmation Sampling Analytical Results (if applicable)  
☐ Waste Material Sampling Analytical Results (required for on-site closure)  
☐ Disposal Facility Name and Permit Number  
☐ Soil Backfilling and Cover Installation  
☐ Re-vegetation Application Rates and Seeding Technique  
☐ Site Reclamation (Photo Documentation)

On-site Closure Location: Latitude \_\_\_\_\_ Longitude \_\_\_\_\_ NAD: ☐ 1927 ☐ 1983

25.  
**Operator Closure Certification:**  
I hereby certify that the information and attachments submitted with this closure report is true, accurate and complete to the best of my knowledge and belief. I also certify that the closure complies with all applicable closure requirements and conditions specified in the approved closure plan.

Name (Print): \_\_\_\_\_ Title: \_\_\_\_\_

Signature: \_\_\_\_\_ Date: \_\_\_\_\_

e-mail address: \_\_\_\_\_ Telephone: \_\_\_\_\_



# New Mexico Energy, Minerals and Natural Resources Department

**Bill Richardson**  
Governor

**Jon Goldstein**  
Cabinet Secretary

**Jim Noel**  
Deputy Cabinet Secretary

**Mark Fesmire**  
Division Director  
Oil Conservation Division



## Conditions of approval for onsite disposal of drilling pit contents:

Samples are to be obtained from pit contents and analyses ran per 19.15.17.13. Paragraph F [NMAC]. In the event the analytical requirements are not met, onsite disposal will not be permitted and the alternative closure method will be required.

Sample analyses of pit contents are to be submitted to NMOCD and approval granted prior to closure of burial trench.

Per 19.15.17 NMAC, Operator shall notify the District Office at least 72 hours, but not more than one week, prior to commencement of closure operations. The notice shall include the operator's name and the location to be closed by unit letter, section, township and range. The notice shall also include the well name, number and API number.

Notify NMOCD District 2 Office 48 hours prior to obtaining samples from drilling pit contents.

Notify NMOCD District 2 Office 48 hours prior to obtaining samples from drilling pit bottom.

Adherence to all requirements per 19.15.17 [NMAC]





PATRICK H. LYONS  
COMMISSIONER

*State of New Mexico*  
*Commissioner of Public Lands*

310 OLD SANTA FE TRAIL  
P.O. BOX 1148  
SANTA FE, NEW MEXICO 87504-1148

COMMISSIONER'S OFFICE

Phone (505) 827-5760  
Fax (505) 827-5766  
[www.nmstatelands.org](http://www.nmstatelands.org)

March 16, 2010

Sweatt  
720 South Texaco Road  
Hobbs, New Mexico 88240

Re: Right-of-Entry Permit No. ROE-1898 (Remediation)

Dear Mr. Rodriguez,

Please sign both copies of the enclosed right-of-entry permit before a Notary Public and return both sets back to this office for approval by the Commissioner of Public Lands. An officer of the company or his authorized agent must sign the permit.

If you have any questions, or if we may be of further assistance, please do not hesitate to contact this office at 827-5710, Anthony Vigil, or 827-5789 for Anna Villa, Right of Way Manager.

Sincerely,

A handwritten signature in black ink, appearing to read "Anthony Vigil", with a stylized flourish at the end.

Anthony Vigil, Management Analyst  
Rights of Way Department  
& Water Resources Bureau

**-State Land Office Beneficiaries -**

Carrie Tingley Hospital • Charitable Penal & Reform • Common Schools • Eastern NM University • Rio Grande Improvement • Miners' Hospital of NM • NM Boys School • NM Highlands University • NM Institute of Mining & Technology • New Mexico Military Institute • NM School for the Deaf • NM School for the Visually Handicapped • NM State Hospital • New Mexico State University • Northern NM Community College • Penitentiary of New Mexico • Public Buildings at Capital • State Park Commission • University of New Mexico • UNM Saline Lands • Water Reservoirs • Western New Mexico University

**NEW MEXICO STATE LAND OFFICE  
Patrick H. Lyons, Commissioner of Public Lands  
New Mexico State Land Office Building  
P.O. Box 1148, Santa Fe, NM 87504-1148**

**RIGHT OF ENTRY PERMIT  
CONTRACT NO. ROE-1898**

**1. RIGHT OF ENTRY PERMIT**

This permit is issued under the authority of NMSA 1978, Section 19-1-2. Therefore, and in consideration of and subject to the terms, covenants, conditions, agreements, obligations and reservations contained in the permit and all other existing rights, the Commissioner of Public Lands, New Mexico State Land Office, State Of New Mexico, hereinafter called "COMMISSIONER," grants to **Sweatt**. State of Incorporation (if applicable), **New Mexico** whose address is **720 South Texaco Road, Hobbs, New Mexico 88240**, hereinafter called "PERMITTEE," authorized use of a specific tract(s) of State Trust Land only for the term, and only for the permitted use, described in this permit.

**2. TERM AND LAND DESCRIPTION**

Right of entry is granted for a term of **180 days**, commencing **March 15, 2010**, and ending **September 9, 2010** to the following State Trust Lands.

**Section 16, Township 24 South, Range 31 East. Unit Letter A. Eddy County.**

**3. APPLICATION and PROCESSING FEE**

**\$ 530.00 (Five Hundred Thirty Dollars)**

**4. PERMITTED USE, PERSONNEL, EQUIPMENT AND MATERIALS**

Permitted use is for the purpose of: **Pit Closure.**

Personnel present on State Trust Land: **Employees of Sweatt.**

Equipment & Materials present on State Trust Land:

***Prior to execution of project company must identify and contact the Grazing Lessee.***

***The granting of this permit does not allow access across private***



## **5. IMPROVEMENTS**

No improvements shall be placed on the premises without the prior written consent of the Commissioner.

## **6. RESERVATIONS**

Commissioner reserves the right to execute leases, rights of way, easements, permits, exchange agreements, sale agreements, permits and other lawful rights on or across the land covered by this permit, including but not limited to any such rights for mining purposes and for the extraction of oil, gas, salt, geothermal resources, and other mineral deposits there from and the right to go upon, explore for, mine, remove and sell same.

## **7. COMPLIANCE WITH LAWS**

Permittee shall at its own expense comply fully with and be subject to all applicable regulations, rules, ordinances, and requirements of law or of the Commissioner, including but not limited to the regulations of the State Land Office; Chapter 19 NMSA governing State Trust Lands; federal and state environmental laws and regulations; and the New Mexico Cultural Properties Act, NMSA 1978 Sections 18-6-1 through 18-6-23. It is illegal for any person or his agent to appropriate, excavate, injure, or destroy any historic, or prehistoric ruin or monument, or any object of historical, archaeological, architectural, or scientific value situated on lands owned or controlled by the State Land Office without a valid permit issued by the Cultural Properties Review Committee and approved by the Commissioner of Public Lands.

## **8. HOLD HARMLESS AND INDEMNIFICATION**

Permittee shall save, hold harmless, indemnify and defend Commissioner, the State Land Office, the State of New Mexico, and any of their officers, employees or agents, in their official and individual capacities, of and from any and all liability, claims, losses, damages, costs, and fees arising out of or alleged to arise out of, or directly or indirectly connected with, the operations of Permittee under this permit on or off State Trust Lands or arising out of the presence on State Trust Lands of any equipment, material, agent, invitee, contractor or subcontractor of Permittee. This Hold Harmless and Indemnification clause covers any claim, including any brought in any court or before any administrative agency, of any loss or alleged loss, and any damages or alleged damages asserted with respect to any violation or alleged violation of any state, federal or local law or regulation, including but not limited to any environmental law or regulation, any cultural properties law (including the New Mexico Cultural Properties Act, cited above) or regulation, and any alleged damage to the property, rights or interests of any State Land Office lessee, right-of-way holder, or other permittee.

## **9. AMENDMENT**

This permit shall not be altered, changed, or amended except by an instrument in writing executed by Commissioner and Permittee.

## **10. WITHDRAWAL**

Commissioner reserves the right to withdraw any or all of the land authorized for use under this permit. If applicable, Permittee shall vacate the acreage specified within 30 days after receipt of written notification of withdrawal from the Commissioner.

## **11. CANCELLATION**

The violation by Permittee of any of the terms, conditions, or covenants of this permit or the nonpayment by Permittee of the fees due under this permit shall at the option of the Commissioner be considered a default and shall cause the cancellation of this permit 30 days after Permittee has been sent written notice of such.

## **12. PRESERVE AND PROTECT**

The Permittee agrees to preserve and protect the natural environmental conditions of the land encompassed in this permit, and to take those reclamation or corrective actions that are accepted soil and water conservation practices and that are deemed necessary by the Commissioner to protect the land from pollution, erosion, or other environmental degradation. The Permittee further agrees not to injure the property of, or interfere with the operations or rights of, any State Land Office lessee, right-of-way holder, easement holder or other permittee who has rights to use the State Trust Land subject to this permit.

## **13. RECLAMATION, REMOVAL OF EQUIPMENT, MATERIALS, AND WASTE**

The Permittee agrees to reclaim those areas that may be damaged by activities conducted thereon.

The Permittee agrees to remove from the State Trust Lands, no later than the end of the term of this permit, all equipment, and materials it has placed or brought upon the land and to clean up and remove from the land any trash, waste, effluent, or other products used or brought upon the land in connection with this permit.

## **14. SPECIAL INSTRUCTIONS AND/OR RESTRICTIONS**

1. No off road traffic allowed.
2. No wood collection or tree cutting allowed.
3. Disturbing, dislodging, damaging, defacing, destroying or removing historical archaeological, paleontological or cultural sites or artifacts is prohibited.
4. Disturbing, dislodging, damaging, defacing, destroying any improvement, fixture, item, object or thing placed or located in, under or upon the land is prohibited.
5. This permit does not grant a right to enter State Trust Lands to which there is no public access.
6. Any uses or activities not within the scope of this permit are not allowed unless prior

written approval from the Commissioner of Public Lands is granted.

7. OTHER

WITNESS the hands and seals of PERMITTEE and COMMISSIONER on the day(s) and year entered below.

*Jesse Rodriguez*  
PERMITTEE

Telephone: 575-631-7377

ACKNOWLEDGMENT

STATE OF \_\_\_\_\_)

COUNTY OF \_\_\_\_\_)

The foregoing instrument was acknowledged before me this \_\_\_\_\_ day of \_\_\_\_\_, 20 \_\_\_\_.

My Commission Expires: \_\_\_\_\_

\_\_\_\_\_  
NOTARY PUBLIC

\_\_\_\_\_  
COMMISSIONER OF PUBLIC LANDS

DATE: \_\_\_\_\_

**NEW MEXICO STATE LAND OFFICE  
Patrick H. Lyons, Commissioner of Public Lands  
New Mexico State Land Office Building  
P.O. Box 1148, Santa Fe, NM 87504-1148**

**RIGHT OF ENTRY PERMIT  
CONTRACT NO. ROE-1898**

**1. RIGHT OF ENTRY PERMIT**

This permit is issued under the authority of NMSA 1978, Section 19-1-2. Therefore, and in consideration of and subject to the terms, covenants, conditions, agreements, obligations and reservations contained in the permit and all other existing rights, the Commissioner of Public Lands, New Mexico State Land Office, State Of New Mexico, hereinafter called "COMMISSIONER," grants to **Sweatt**, State of Incorporation (if applicable), **New Mexico** whose address is **720 South Texaco Road, Hobbs, New Mexico 88240**, hereinafter called "PERMITTEE," authorized use of a specific tract(s) of State Trust Land only for the term, and only for the permitted use, described in this permit.

**2. TERM AND LAND DESCRIPTION**

Right of entry is granted for a term of **180 days**, commencing **March 15, 2010**, and ending **September 9, 2010** to the following State Trust Lands.

**Section 16, Township 24 South, Range 31 East. Unit Letter A. Eddy County.**

**3. APPLICATION and PROCESSING FEE**

**\$ 530.00 (Five Hundred Thirty Dollars)**

**4. PERMITTED USE, PERSONNEL, EQUIPMENT AND MATERIALS**

Permitted use is for the purpose of: **Pit Closure.**

Personnel present on State Trust Land: **Employees of Sweatt.**

Equipment & Materials present on State Trust Land:

***Prior to execution of project company must identify and contact the Grazing Lessee.***

***The granting of this permit does not allow access across private***

## **5. IMPROVEMENTS**

No improvements shall be placed on the premises without the prior written consent of the Commissioner.

## **6. RESERVATIONS**

Commissioner reserves the right to execute leases, rights of way, easements, permits, exchange agreements, sale agreements, permits and other lawful rights on or across the land covered by this permit, including but not limited to any such rights for mining purposes and for the extraction of oil, gas, salt, geothermal resources, and other mineral deposits there from and the right to go upon, explore for, mine, remove and sell same.

## **7. COMPLIANCE WITH LAWS**

Permittee shall at its own expense comply fully with and be subject to all applicable regulations, rules, ordinances, and requirements of law or of the Commissioner, including but not limited to the regulations of the State Land Office; Chapter 19 NMSA governing State Trust Lands; federal and state environmental laws and regulations; and the New Mexico Cultural Properties Act, NMSA 1978 Sections 18-6-1 through 18-6-23. It is illegal for any person or his agent to appropriate, excavate, injure, or destroy any historic, or prehistoric ruin or monument, or any object of historical, archaeological, architectural, or scientific value situated on lands owned or controlled by the State Land Office without a valid permit issued by the Cultural Properties Review Committee and approved by the Commissioner of Public Lands.

## **8. HOLD HARMLESS AND INDEMNIFICATION**

Permittee shall save, hold harmless, indemnify and defend Commissioner, the State Land Office, the State of New Mexico, and any of their officers, employees or agents, in their official and individual capacities, of and from any and all liability, claims, losses, damages, costs, and fees arising out of or alleged to arise out of, or directly or indirectly connected with, the operations of Permittee under this permit on or off State Trust Lands or arising out of the presence on State Trust Lands of any equipment, material, agent, invitee, contractor or subcontractor of Permittee. This Hold Harmless and Indemnification clause covers any claim, including any brought in any court or before any administrative agency, of any loss or alleged loss, and any damages or alleged damages asserted with respect to any violation or alleged violation of any state, federal or local law or regulation, including but not limited to any environmental law or regulation, any cultural properties law (including the New Mexico Cultural Properties Act, cited above) or regulation, and any alleged damage to the property, rights or interests of any State Land Office lessee, right-of-way holder, or other permittee.

## **9. AMENDMENT**

This permit shall not be altered, changed, or amended except by an instrument in writing executed by Commissioner and Permittee.

## **10. WITHDRAWAL**

Commissioner reserves the right to withdraw any or all of the land authorized for use under this permit. If applicable, Permittee shall vacate the acreage specified within 30 days after receipt of written notification of withdrawal from the Commissioner.

## **11. CANCELLATION**

The violation by Permittee of any of the terms, conditions, or covenants of this permit or the nonpayment by Permittee of the fees due under this permit shall at the option of the Commissioner be considered a default and shall cause the cancellation of this permit 30 days after Permittee has been sent written notice of such.

## **12. PRESERVE AND PROTECT**

The Permittee agrees to preserve and protect the natural environmental conditions of the land encompassed in this permit, and to take those reclamation or corrective actions that are accepted soil and water conservation practices and that are deemed necessary by the Commissioner to protect the land from pollution, erosion, or other environmental degradation. The Permittee further agrees not to injure the property of, or interfere with the operations or rights of, any State Land Office lessee, right-of-way holder, easement holder or other permittee who has rights to use the State Trust Land subject to this permit.

## **13. RECLAMATION, REMOVAL OF EQUIPMENT, MATERIALS, AND WASTE**

The Permittee agrees to reclaim those areas that may be damaged by activities conducted thereon.

The Permittee agrees to remove from the State Trust Lands, no later than the end of the term of this permit, all equipment, and materials it has placed or brought upon the land and to clean up and remove from the land any trash, waste, effluent, or other products used or brought upon the land in connection with this permit.

## **14. SPECIAL INSTRUCTIONS AND/OR RESTRICTIONS**

1. No off road traffic allowed.
2. No wood collection or tree cutting allowed.
3. Disturbing, dislodging, damaging, defacing, destroying or removing historical archaeological, paleontological or cultural sites or artifacts is prohibited.
4. Disturbing, dislodging, damaging, defacing, destroying any improvement, fixture, item, object or thing placed or located in, under or upon the land is prohibited.
5. This permit does not grant a right to enter State Trust Lands to which there is no public access.
6. Any uses or activities not within the scope of this permit are not allowed unless prior

written approval from the Commissioner of Public Lands is granted.

7. OTHER

WITNESS the hands and seals of PERMITTEE and COMMISSIONER on the day(s) and year entered below.

Jesse Rodriguez  
PERMITTEE

Telephone: 575-631-7377

**ACKNOWLEDGMENT**

**STATE OF** \_\_\_\_\_ )

**COUNTY OF** \_\_\_\_\_ )

The foregoing instrument was acknowledged before me this \_\_\_\_\_ day of \_\_\_\_\_, 20 \_\_\_\_.

My Commission Expires: \_\_\_\_\_  
NOTARY PUBLIC

\_\_\_\_\_  
COMMISSIONER OF PUBLIC LANDS

DATE: \_\_\_\_\_

**S16 T24S R31E**

Soils: Berino Complex 0-3% slopes eroded

Ecological site: Loamy Sand (R042XC003NM)

**SEED MIXTURE:**

COMMON NAME	VARIETY	APPLICATION RATE (PLS/Acre)	DRILL BOX
<b>Grasses:</b>			
Sand bluestem	Elida, VNS, So.	2.0	F
Little bluestem	Cimarron, Pastura	3.0	F
Black grama	VNS, Southern	1.0	D
Sand dropseed	VNS, Southern	4.0	S
Plains bristlegrass	VNS, Southern	2.0	D
<b>Forbs:</b>			
Firewheel (Gaillardia)	VNS, Southern	1.0	D
Annual Sunflower	VNS, Southern	1.0	D
<b>Shrubs:</b>			
Fourwing Saltbush	VNS, Southern	1.0	F
<b>Total PLS/acre</b>		<b>15.0</b>	

S = Small seed drill box, D = Standard seed drill box, F = Fluffy seed drill box

VNS = Variety Not Stated, PLS = Pure Live Seed

- Depending on the drill to be used, seed mixes should be provided in bags separating seed types into the three categories: small (S), standard (D) and fluffy (F).
- VNS, Southern – Seed should be from a southern latitude collection of this species.
- Double seed application rate for broadcast or hydroseeding.
- If one species is not available or is overly expensive, contact the SLO for an approved substitute; alternatively the SLO may require other species proportionately increased.
- Additional information on these seed species can be found on the USDA Plants Database website at <http://plants.usda.gov>.



**S16 T24S R31E**

Soils: Berino-Complex 0-3% slopes eroded

Ecological site: Loamy Sand (R042XC003NM)

**SEED MIXTURE:**

COMMON NAME	VARIETY	APPLICATION RATE (PLS/Acre)	DRILL BOX
<b>Grasses:</b>			
Sand bluestem	Elida, VNS, So.	2.0	F
Little bluestem	Cimarron, Pastura	3.0	F
Black grama	VNS, Southern	1.0	D
Sand dropseed	VNS, Southern	4.0	S
Plains bristlegrass	VNS, Southern	2.0	D
<b>Forbs:</b>			
Firewheel (Gaillardia)	VNS, Southern	1.0	D
Annual Sunflower	VNS, Southern	1.0	D
<b>Shrubs:</b>			
Fourwing Saltbush	VNS, Southern	1.0	F
<b>Total PLS/acre</b>		<b>15.0</b>	

S = Small seed drill box, D = Standard seed drill box, F = Fluffy seed drill box

VNS = Variety Not Stated, PLS = Pure Live Seed

- Depending on the drill to be used, seed mixes should be provided in bags separating seed types into the three categories: small (S), standard (D) and fluffy (F).
- VNS, Southern—Seed should be from a southern latitude collection of this species.
- Double seed application rate for broadcast or hydroseeding.
- If one species is not available or is overly expensive, contact the SLO for an approved substitute; alternatively the SLO may require other species proportionately increased.
- Additional information on these seed species can be found on the USDA Plants Database website at <http://plants.usda.gov>.

# THE NEW MEXICO STATE LAND OFFICE



## RIGHT OF WAY & WATER RESOURCES BUREAU SURFACE RESOURCES MANAGEMENT DIVISION

310 Old Santa Fe Trail  
P.O. Box 1148  
Santa Fe, NM 87504-1148  
Fax (505) 827-5741

*Anna Villa, Right of Way Leasing Manager 505-827-5789*

Melissa Armijo, Management Analyst	505-827-5728
Patricia Esquibel, Management Analyst	505-827-5899
Anthony Vigil, Management Analyst	505-827-5710
Nick Jaramillo, Management Analyst	505-827-5773
Philip Garcia, Management Analyst	505-827-5842
Michael Quintana, Management Analyst	505-827-5734

2010 FEB 26 AM 8 46

~FAX~  
**COVER PAGE**

To: Jessie Rodriguez Fax #: (575) 391-0374

Company: Sweatt Construction inc. Date: February 11, 2010

From: Anthony Vigil (New Mexico State Land Office) Number of pages: 2  
Including Cover Page

Reference: Right of Entry (Remediation) Request Form

# New Mexico State Land Office

## Rights of Way Division

(505) 827-5842 P.O. Box 1148 Santa Fe, NM 87504



### RIGHT OF ENTRY (ROE) REQUEST FOR REMEDIATION

Company Name SWCAII  
 Address 720 SOUTH TEXACO Road.  
 City, State, Zip Hobbs NM 88240  
 Contact Person: Jesse Rodriguez  
 Telephone #: 575-631-7377  
 Email: Jesse.Rodriguez@swcainc.com

ROE-1898

Purpose of request: Pit Closure

Section 16 Township 24 Range 31 Unit Letter A

Qtr/Qtr \_\_\_\_\_ County Elddy

GPS Location (decimal degrees): Latitude \_\_\_\_\_ W Longitude \_\_\_\_\_

If this is a remediation for a spill please attach a copy of the OCD C-141 form.

Is the completed C-141 attached? Yes ☒ No ☐

Square footage of spill impacted surface: 120 x 120

Estimated square footage of total disturbance: 140 x 140

Reclamation Plan (attach addl. sheet if necessary) \_\_\_\_\_

Driving directions from nearest state highway or road (attach a map of the location): \_\_\_\_\_

Lease number associated with the ROE request: \_\_\_\_\_

Well Name and/or Operator (if applicable): V F Petroleum

Time expected to complete remediation: \_\_\_\_\_

Personnel present on State Land \_\_\_\_\_

Equipment & materials present on State Land NO

\$530.00 application fee (based on 180 days) can be renewed for up to 3 years.

Payable to: The Commissioner of Public Lands  
 P. O. Box 1148  
 Santa Fe, NM 87504-1148

Revised (08/2008)

2010 FEB 26 AM 8 46

180 days  
 \$530.  
 amt  
 3/15/10

57 0 26-FEB-10 10:22

30/10

56 0 26-FEB-10 10:22

500.00

Western Bank  
ARTESIA, NEW MEXICO 88210



GCI INC., DBA  
**SWEATT CONSTRUCTION**

720 S. TEXACO ROAD  
HOBBS, NM 88240  
(505) 393-3180

30946

95-198-1122

DATE 2-22-10

PAY  
TO THE  
ORDER OF

The Commissioner of Public Land \$ 530.00

DOLLARS



Security Features  
Detailed  
Details on Back


*Right of Entry*

*[Signature]*

MP

THIS CHECK IS DELIVERED FOR PAYMENT ON THE ACCOUNTS LISTED

⑈030946⑈ ⑆112201988⑆ ⑈0024060610⑈



GCI d/b/a/ SWEATT CONSTRUCTION INC.  
GENERAL DIRT WORK  
OIL FIELD ROADS - PITS - LOCATIONS  
720 SOUTH TEXACO ROAD - HOBBS, NM 88240  
OFFICE (575) 393-3180 / FAX (575) 391-9895

Mike Bratcher  
1301 W. Grand Ave.  
Artesia, N.M. 88210

Dear Mr. Bratcher:

I'm writing you this letter in regards to a closure plan that I'm needing to complete for closure on this pit.

(V F Petroleum Sundance 16 State #1) On January 20, 2010 I contacted the State of New Mexico and

spoke to Myra Harrison District Resource Manager at Hobbs field office in regard to proof of surface owner notice.

This land belongs to the State of New Mexico they have a grazing lease on the surface of the land the grazing lease is being leased by JR Engineering & Construction. 575-885-6175. If you have any questions you can contact me at 575-631-7377

Sincerely,

  
Jesse Rodriguez

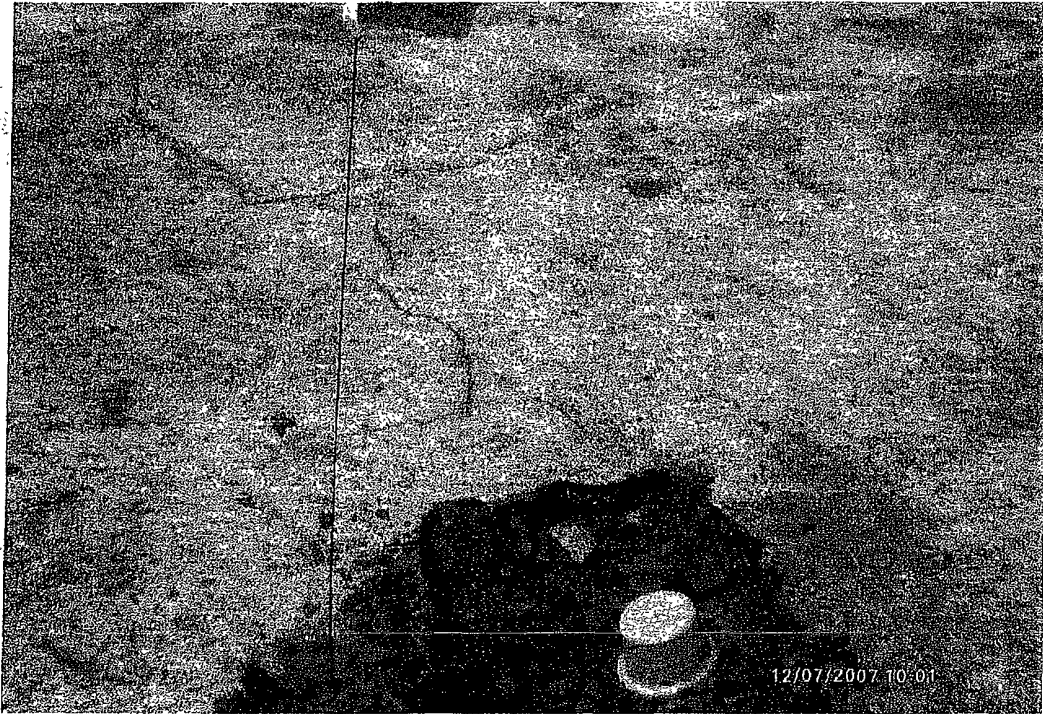
(575)  
631-7376

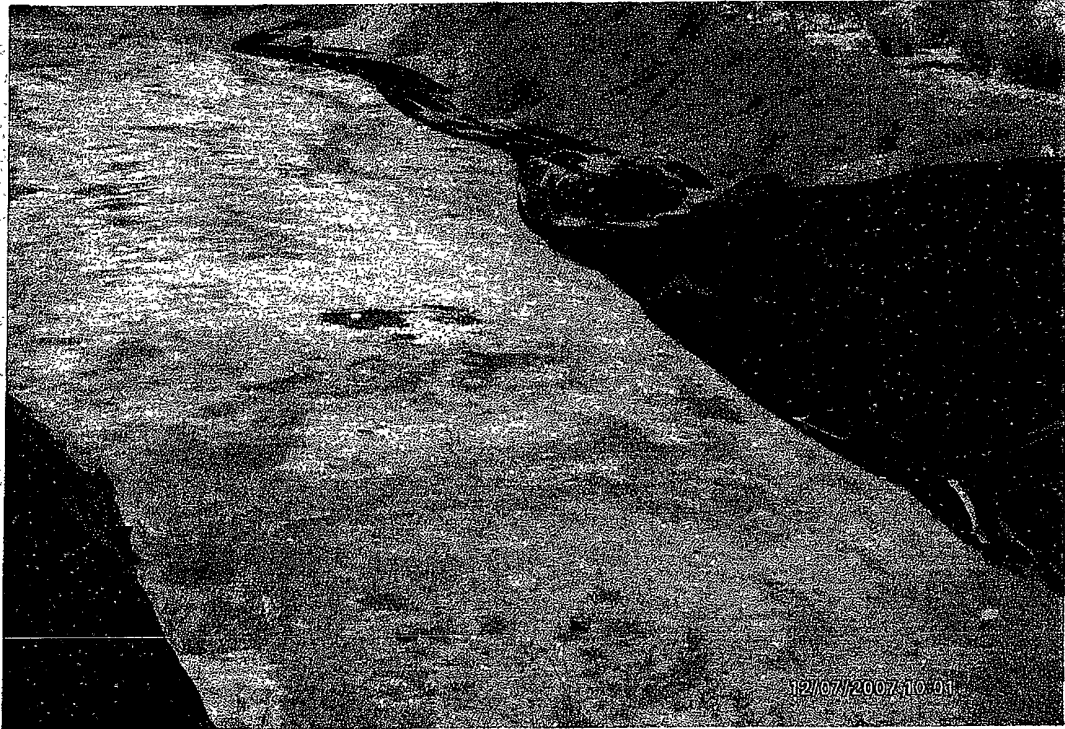
2/11/10

(575) 391-0374

V-F PETROLEUM INC.  
SUNDANCE 16 STATE #1  
660' FNL & 660' FEL  
UNIT A, SEC. 16-T24S-R31E  
EDDY COUNTY, NEW MEXICO  
API #30-015-34091

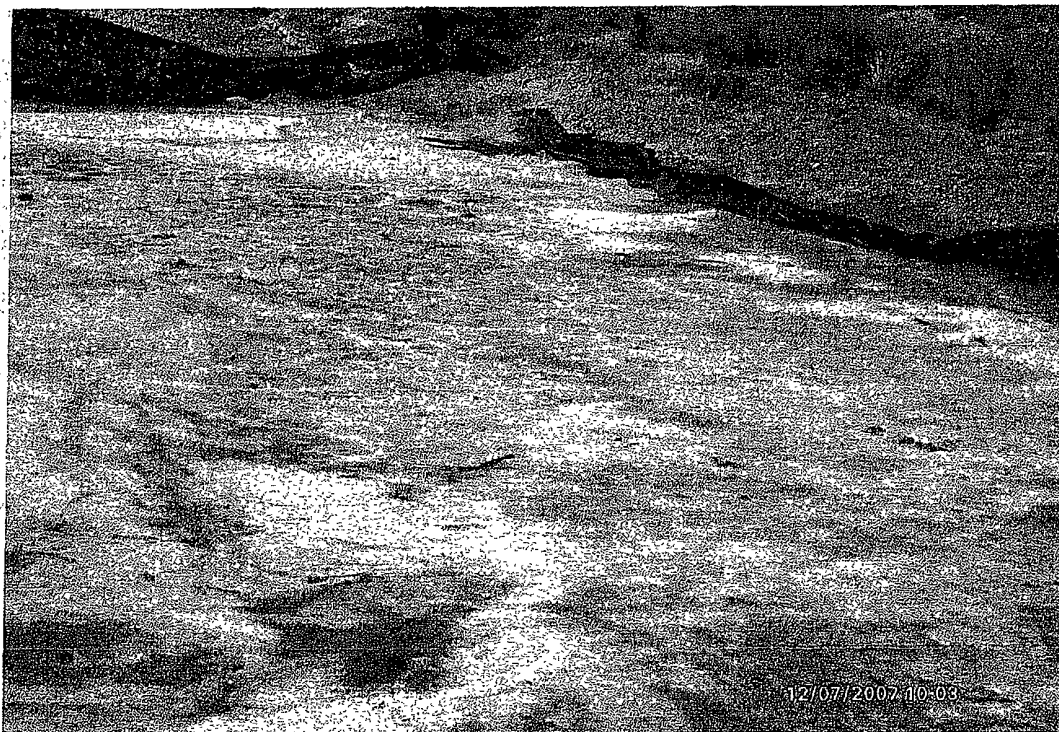
12/07/2007 09:27

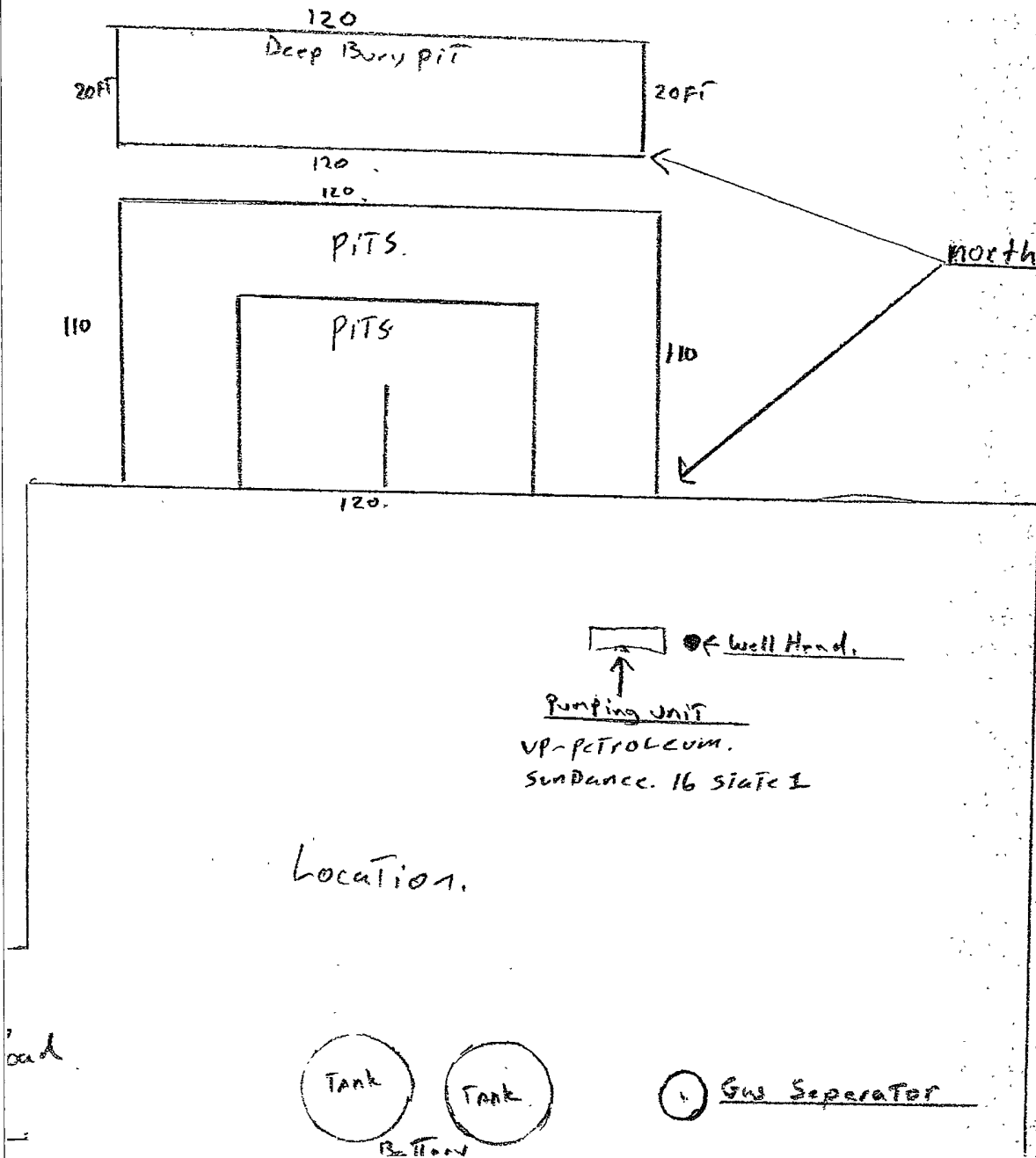




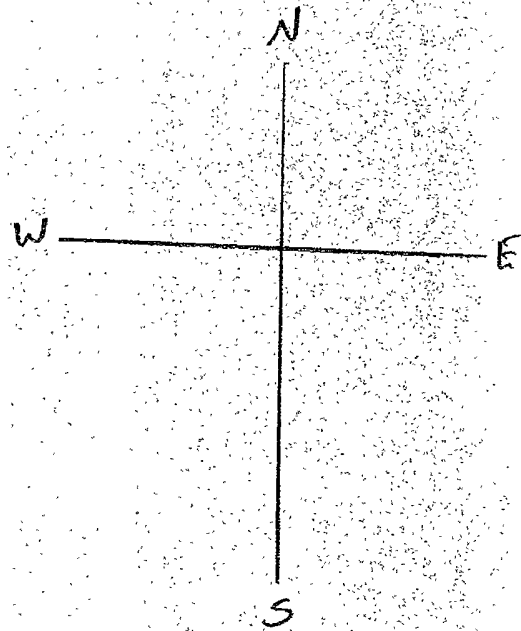




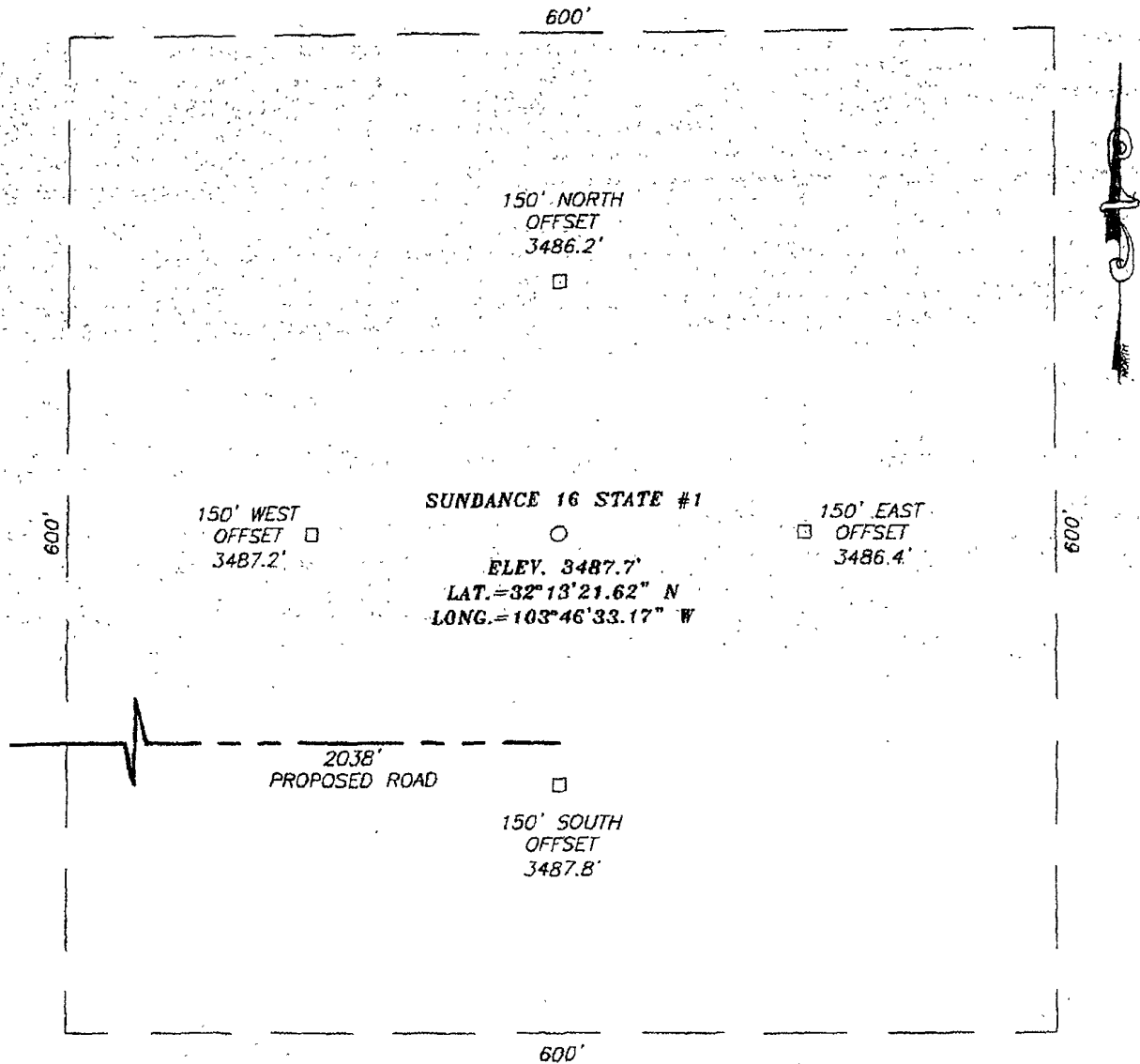




North side of Location to Deep Bury Pit is 130ft

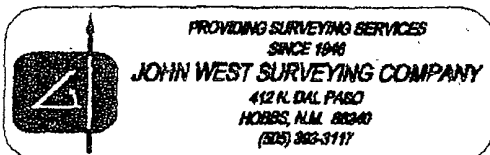
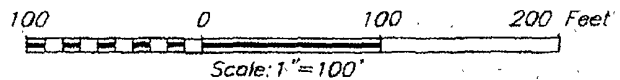


**SECTION 16, TOWNSHIP 24 SOUTH, RANGE 31 EAST, N.M.P.M.,**  
 EDDY COUNTY, NEW MEXICO



**DIRECTIONS TO LOCATION**

FROM THE INTERSECTION OF ST. ROAD #128 AND BUCK JACKSON RD. (C.R. 786), GO SOUTHWEST ON BUCK JACKSON APPROX. 2.9 MILES TO A LEASE ROAD GOING WEST. GO WEST APPROX. 1.1 MILES TO A TWO TRACK ROAD TO THE NORTH, ALONG A POWER LINE. GO NORTH APPROX. 0.6 MILES. THIS LOCATION IS 600 FEET TO THE WEST.

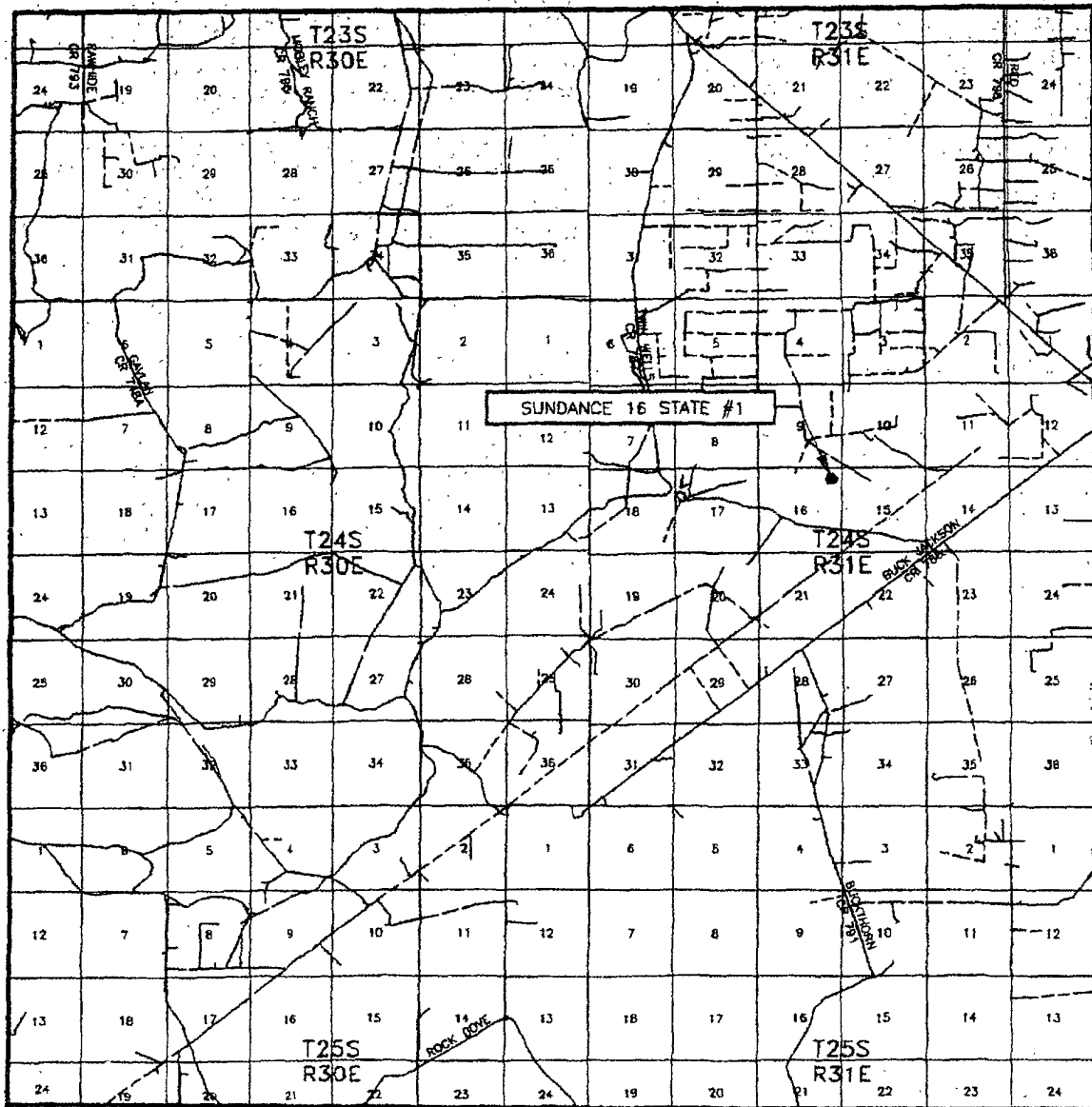


**V-F PETROLEUM, INC.**

SUNDANCE 16 STATE #1 WELL  
 LOCATED 660 FEET FROM THE NORTH LINE  
 AND 660 FEET FROM THE EAST LINE OF SECTION 16,  
 TOWNSHIP 24 SOUTH, RANGE 31 EAST, N.M.P.M.,  
 EDDY COUNTY, NEW MEXICO.

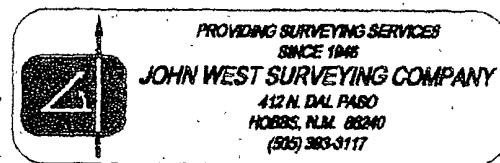
Survey Date: 04/26/05	Sheet 1 of 1 Sheets
W.O. Number: 05.11.0656	Dr By: DEL
Date: 04/27/05	Disk: CD#4
05110656	Scale: 1"=100'

# VICINITY MAP

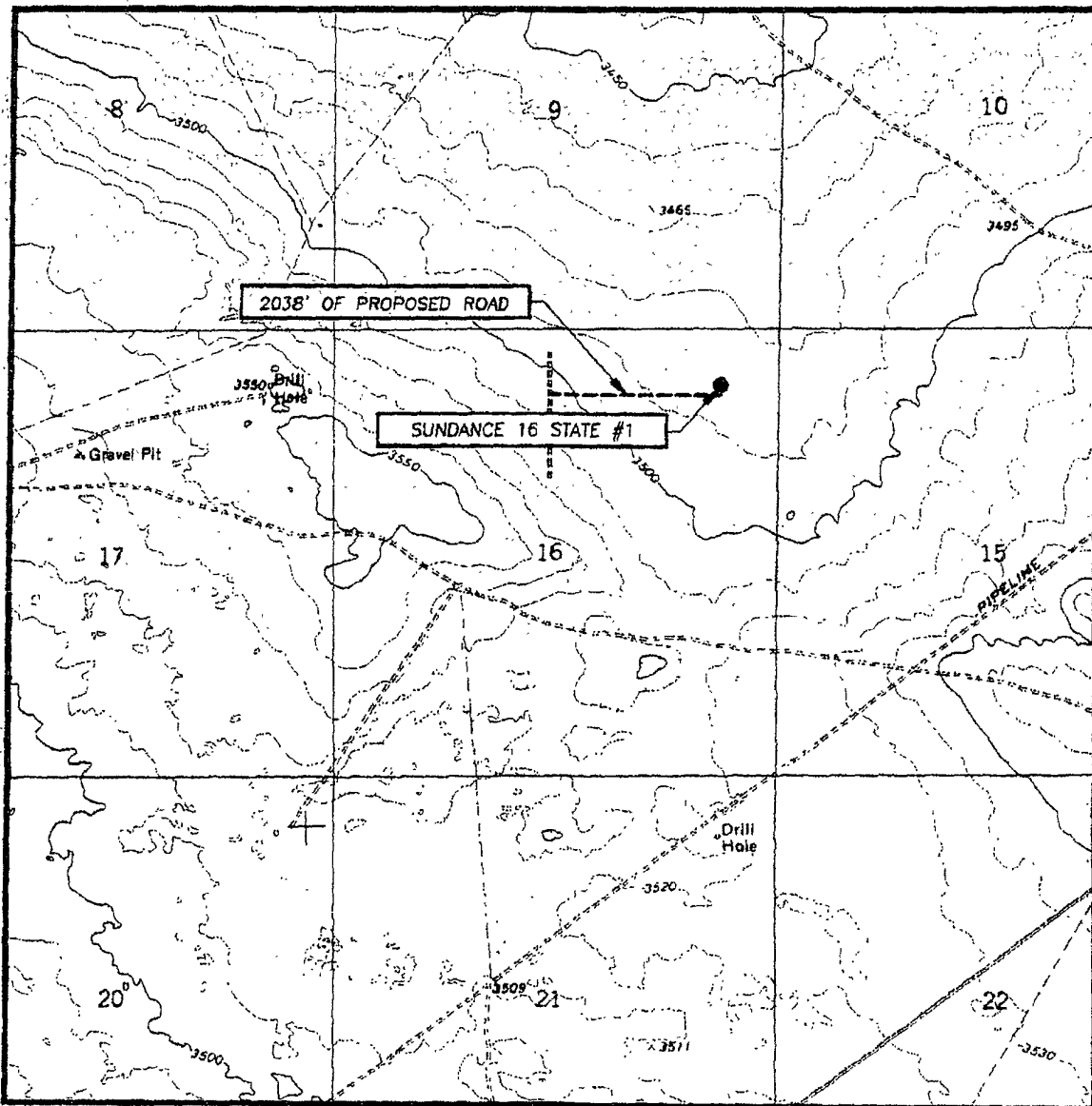


SCALE: 1" = 2 MILES

SEC. 16 TWP. 24-S RGE. 31-E  
 SURVEY N.M.P.M.  
 COUNTY EDDY  
 DESCRIPTION 660' FNL & 660' FEL  
 ELEVATION 3488'  
 OPERATOR V-F PETROLEUM, INC.  
 LEASE SUNDANCE 16 STATE



# LOCATION VERIFICATION MAP



SCALE: 1" = 2000'

CONTOUR INTERVAL:  
BIG SINKS, N.M. - 10'

SEC. 16 TWP. 24-S RGE. 31-E

SURVEY N.M.P.M.

COUNTY EDDY

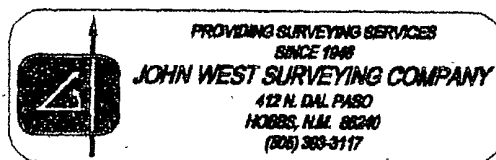
DESCRIPTION 660' FNL & 660' FEL

ELEVATION 3488'

OPERATOR V-F PETROLEUM, INC.

LEASE SUNDANCE 16 STATE

U.S.G.S. TOPOGRAPHIC MAP  
BIG SINKS, N.M.



District I  
1625 N. French Dr., Hobbs, NM 88240  
District II  
1301 W. Grand Avenue, Artesia, NM 88210  
District III  
1000 Rio Brazos Road, Aztec, NM 87410  
District IV  
1220 S. St. Francis Dr., Santa Fe, NM 87505



State of New Mexico  
Energy Minerals and Natural Resources

Oil Conservation Division  
1220 South St. Francis Dr.  
Santa Fe, NM 87505

Form C-144  
June 1, 2004

For drilling and production facilities, submit to appropriate NMOCD District Office.  
For downstream facilities, submit to Santa Fe office

**Pit or Below-Grade Tank Registration or Closure**

Is pit or below-grade tank covered by a "general plan"? Yes ☐ No ☒  
Type of action: Registration of a pit or below-grade tank ☐ Closure of a pit or below-grade tank ☒

Month - Year

APR 26 2007

OCD - ARTESIA, NM

Operator: V-F PETROLEUM INC. Telephone: (432) 683-3344 e-mail address: skl@vfmotroleum.com

Address P.O. BOX 1889, MIDLAND, TEXAS 79702

Facility or well name: SUNDANCE 16 STATE #1 API #: 30-015-34091 U/L or Qtr/Qtr A Sec 16 T 24 S R 31-E

County: EDDY Latitude \_\_\_\_\_ Longitude \_\_\_\_\_ NAD: 1927 ☐ 1983 ☐

Surface Owner: Federal ☐ State ☐ Private ☒ Indian ☐

**Pit**  
Type: Drilling ☒ Production ☐ Disposal ☐  
Workover ☐ Emergency ☐  
Lined ☐ Unlined ☐  
Liner type: Synthetic ☒ Thickness 20 mil Clay ☐  
Pit Volume 30 bbl

**Below-grade tank**  
Volume: \_\_\_\_\_ bbl Type of fluid: \_\_\_\_\_  
Construction material: \_\_\_\_\_  
Double-walled, with leak detection? Yes ☐ If not, explain why not.

Depth to ground water (vertical distance from bottom of pit to seasonal high water elevation of ground water.)

Less than 50 feet (20 points)  
50 feet or more, but less than 100 feet (10 points)  
100 feet or more (0 points) X

Wellhead protection area: (Less than 200 feet from a private domestic water source, or less than 1000 feet from all other water sources.)

Yes (20 points)  
No (0 points) X

Distance to surface water: (horizontal distance to all wetlands, playas, irrigation canals, ditches, and perennial and ephemeral watercourses.)

Less than 200 feet (20 points)  
200 feet or more, but less than 1000 feet (10 points)  
1000 feet or more (0 points) X

**Ranking Score (Total Points)** 0 POINTS

If this is a pit closure: (1) Attach a diagram of the facility showing the pit's relationship to other equipment and tanks. (2) Indicate disposal location: (check the onsite box if you are burying in place) onsite ☒ offsite ☐ If offsite, name of facility CRI. (3) Attach a general description of remedial action taken including remediation start date and end date. (4) Groundwater encountered: No ☒ Yes ☐ If yes, show depth below ground surface \_\_\_\_\_ ft. and attach sample results.

(5) Attach soil sample results and a diagram of sample locations and excavations.

Additional Comments: The pits will be dewatered. The remaining contents will be thickened with soil. Encapsulation trenches will be excavated and lined with 12 mil. synthetic material. Pit contents will be placed in the trenches. A 20 mil synthetic liner will be placed over the pit contents with a minimum of 3' overlap on all sides of trenches. The trenches will be backfilled and covered with a minimum of 3' of clean soil. The pit area will be returned to ground level. A one call and 48 hr service notice will be made to the Oil Conservation Division before pit clean up begins. The pit area will be reseeded using seed mixture recommended by the NM OCD.

I hereby certify that the information above is true and complete to the best of my knowledge and belief. I further certify that the above-described pit or below-grade tank has been/will be constructed or closed according to NMOCD guidelines ☒, a general permit ☐, or an (attached) alternative OCD-approved plan ☐.

Date: 04/20/07 S.K. Lawlis, Vice President

Printed Name/Title M. WAYNE LUNA, PRODUCTION SUPERINTENDENT Signature S.K. Lawlis

Your certification and NMOCD approval of this application/closure does not relieve the operator of liability should the contents of the pit or tank contaminate ground water or otherwise endanger public health or the environment. Nor does it relieve the operator of its responsibility for compliance with any other federal, state, or local laws and/or regulations.

Samples are to be obtained from pit area and analysis submitted to NMOCD prior to back-filling

Approval:

Printed Name/Title Jim W. Green Signature \_\_\_\_\_

Date: 4/26/07

District II Supervisor

Operator: V-F PETROLEUM INC. Telephone: (432) 683-3344

Address: P.O. BOX 1889, MIDLAND, TEXAS 79702

Facility or well name: SUNDANCE 16 STATE #1

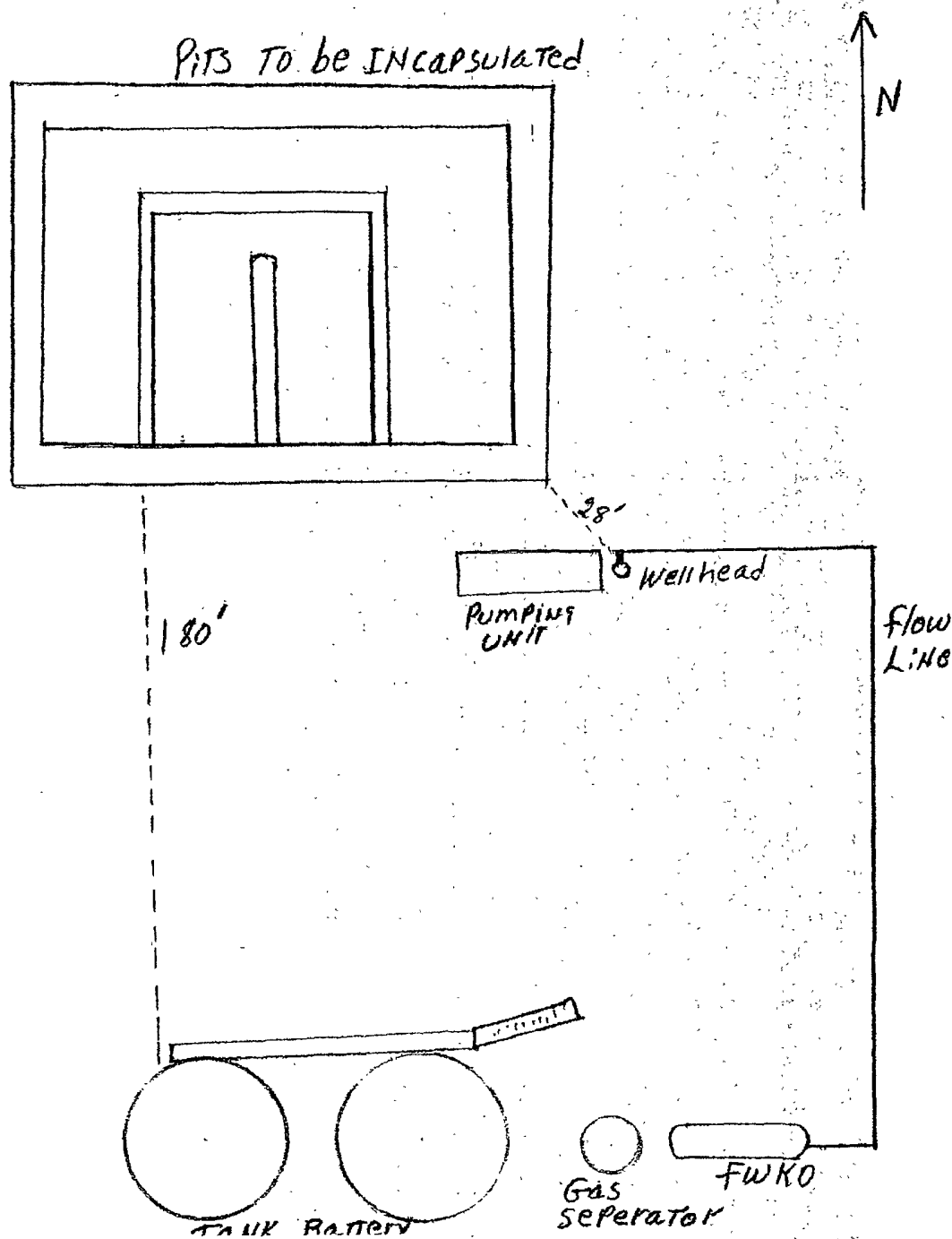
County: EDDY Latitude: \_\_\_\_\_

Surface Owner: Federal ☐ State ☐ Private ☒ Indian ☐

e-mail address: skl@vfpetroleum.com

API#: 30-015-34091 U/L or Qtr/Qtr A Sec 16 T 24-S R 31-E

Longitude \_\_\_\_\_ NAD: 1927 ☐ 1983 ☐





District I  
1625 N. French Dr., Hobbs, NM 88240  
District II  
1301 W. Grand Avenue, Artesia, NM 88210  
District III  
1000 Rio Brazos Road, Aztec, NM 87410  
District IV  
1220 S. St. Francis Dr., Santa Fe, NM 87505

State of New Mexico  
Energy Minerals and Natural Resources

Form C-101  
May 27, 2004

Oil Conservation Division  
1220 South St. Francis Dr.  
Santa Fe, NM 87505

Submit to appropriate District Office

☐ AMENDED REPORT

APPLICATION FOR PERMIT TO DRILL, RE-ENTER, DEEPEN, PLUGBACK, OR ADD A ZONE

Operator Name and Address: V-F. PETROLEUM, INC. 550 WEST TEXAS SUITE 230 MIDLAND, TEXAS 79702		OGRIID Number 024010
Property Code		API Number 30 - 015-34091
Property Name SUNDANCE "16" STATE		Well No. 1
POKER LAKE-DELAWARE Proposed Pool 1 Alcane 4 50000 SO 389		Proposed Pool 2

7 Surface Location

UL or lot no.	Section	Township	Range	Lot Idn	Feet from the	North/South line	Feet from the	East/West line	County
A	16	24S	31E		660'	NORTH	660'	EAST	EDDY

8 Proposed Bottom Hole Location If Different From Surface

UL or lot no.	Section	Township	Range	Lot Idn	Feet from the	North/South line	Feet from the	East/West line	County

Additional Well Information

Work Type Code N	Well Type Code O	Cable/Rotary ROTARY	Lease Type Code S	Ground Level Elevation 3488'
Multiple NO	Proposed Depth 8500'	Formation DELEWARE	Contractor UNKNOWN	Spud Date WHEN APPROVED
Depth to Groundwater 350'		Distance from nearest fresh water well .5 mi		Distance from nearest surface water 1.5 mi
Pit: Liner: Synthetic <input checked="" type="checkbox"/> 12 mils thick Clay <input type="checkbox"/> Pit Volume: 16M bbls Drilling Method:				
Closed-Loop System <input type="checkbox"/> Fresh Water <input checked="" type="checkbox"/> Brine <input checked="" type="checkbox"/> Diesel/Oil-based <input type="checkbox"/> Gas/Air <input type="checkbox"/>				

21 Proposed Casing and Cement Program

Hole Size	Casing Size	Casing weight/foot	Setting Depth	Sacks of Cement	Estimated TOC
25"	20"	NA	40'	Redi-mix	Surface
17 1/2"	13 3/8"	54.5	650'	675 Sx.	Surface
12 1/4"	8 5/8"	24 & 32	4200'	1450 Sx.	Surface
7 7/8"	5 1/2"	17 & 15.5	8500'	1200 Sx.	4000' F.Surface

22 Describe the proposed program. If this application is to DEEPEN or PLUG BACK, give the data on the present productive zone and proposed new productive zone. Describe the blowout prevention program, if any. Use additional sheets if necessary.

SEE ATTACHED SHEET

I hereby certify that the information given above is true and complete to the best of my knowledge and belief. I further certify that the drilling pit will be constructed according to NMOCD guidelines ☒ a general permit ☐ or an (attached) alternative OCD-approved plan ☐.

Printed name: Joe T. Janica

Title: Agent

E-mail Address:

Date: 04/27/05

Phone: 505-391-8503

OIL CONSERVATION DIVISION

Approved by:

TIM W. GUM

DISTRICT II SUPERVISOR

Approval Date: APR 29 2005

Expiration Date: APR 29 2005

Conditions of Approval Attached ☐

V-F PETROLEUM, INC.  
SUNDANCE "16" STATE #1  
660' FNL & 660' FEL  
SECTION 16 T24S-R31E  
EDDY CO. NEW MEXICO

1. Drill 25" hole to 40'. Set 40' of 20" conductor pipe and cement to surface with Redi-mix.
2. Drill 17½" hole to 650'. Run and set 650' of 13 3/8" 54.5# J-55 ST&C casing. Cement with 675 Sx. of Class "C" cement + 2% CaCl<sub>2</sub> + ½# Flocele/Sx., circulate cement to surface.
3. Drill 12½" hole to 4200'. Run and set 4200' of 8 5/8" 24 & 32# J-55 ST&C casing. Cement with 1450 Sx. of Class "C" cement + additives, circulate cement to surface.
4. Drill 7 7/8" hole to 8500'. Run and set 8500' of 5½" 17 & 15.5# J-55 LT&C casing. Cement with 1200 Sx. of Class "H" Premium Plus cement + additives, estimate top of cement 4000' from surface.



APRIL 27, 2005

OIL CONSERVATION DIVISION  
ARTESIA DISTRICT  
1301 WEST GRAND AVENUE  
ARTESIA, NEW MEXICO 88210

Re: H<sub>2</sub>S presence or the lack of.

Att: Mr. Bryan Arant

Dear Bryan:

I have checked with The Bureau of Land Management in the Rosewell Field Office as to the possibility of H<sub>2</sub>S being present in the area where this well is being drilled and they do not find any record of the presence of H<sub>2</sub>S being encountered in drilling of any wells in that area.

Sincerely,

Joe T. Janica  
Agent for  
V-F PETROLEUM, INC  
550 WEST TEXAS AVE.  
SUITE 230  
MIDLAND, TEXAS 79701

## DISTRICT I

1825 N. FRANCHI DR., ROSA, NM 88240

## DISTRICT II

1301 W. GRAND AVENUE, ARTESIA, NM 88210

## DISTRICT III

1000 Rio Brazos Rd., Aztec, NM 87410

## DISTRICT IV

1220 S. ST. FRANCIS DR., SANTA FE, NM 87505

## State of New Mexico

Energy, Minerals and Natural Resources Department

## OIL CONSERVATION DIVISION

1220 SOUTH ST. FRANCIS DR.  
Santa Fe, New Mexico 87505

Form C-102

Revised JUNE 10, 2003

Submit to Appropriate District Office

State Lease - 4 Copies

Fee Lease - 3 Copies

## WELL LOCATION AND ACREAGE DEDICATION PLAT

☐ AMENDED REPORT

API Number	Pool Code 50382	Pool Name POKER LAKE-DELAWARE
Property Code	Property Name SUNDANCE 16 STATE	Well Number 1
OGRID No. 024010	Operator Name V-F PETROLEUM, INC.	Elevation 3488'

## Surface Location

UL or lot No.	Section	Township	Range	Lot Idn	Feet from the	North/South line	Feet from the	East/West line	County
A	16	24-S	31-E		660	NORTH	660	EAST	EDDY

## Bottom Hole Location If Different From Surface

UL or lot No.	Section	Township	Range	Lot Idn	Feet from the	North/South line	Feet from the	East/West line	County
Dedicated Acres 40	Joint or Infill	Consolidation Code	Order No.						

NO ALLOWABLE WILL BE ASSIGNED TO THIS COMPLETION UNTIL ALL INTERESTS HAVE BEEN CONSOLIDATED  
OR A NON-STANDARD UNIT HAS BEEN APPROVED BY THE DIVISION

## OPERATOR CERTIFICATION

I hereby certify that the information  
contained herein is true and complete to the  
best of my knowledge and belief

Signature

Joe T Janica

Printed Name

Agent

Title

04/27/05

Date

## SURVEYOR CERTIFICATION

I hereby certify that the well location shown  
on this plat was plotted from field notes of  
actual surveys made by me or under my  
supervision, and that the same is true and  
correct to the best of my belief.

APRIL 26, 2005

Date Surveyed

DEL

Signature & Seal of  
Professional Surveyor

NEW MEXICO  
05-11-0658  
CERTIFIED PROFESSIONAL SURVEYOR  
12641

GEODETIC COORDINATES  
NAD 27 NME

Y=445174.8 N  
X=672389.8 E

LAT.=32°13'21.62" N  
LONG.=103°46'33.17" W

# Analytical Report 344989

for

**Trace Analysis, Inc.**

**Project Manager: Liz Givens**

**207616**

**08-OCT-09**



**842 Cantwell Lane Corpus Christi, Texas 78408**

Xenco-Houston (EPA Lab code: TX00122):

Texas (T104704215-08-TX), Arizona (AZ0738), Arkansas (08-039-0), Connecticut (PH-0102), Florida (E871002)  
Illinois (002082), Indiana (C-TX-02), Iowa (392), Kansas (E-10380), Kentucky (45), Louisiana (03054)  
New Hampshire (297408), New Jersey (TX007), New York (11763), Oklahoma (9218), Pennsylvania (68-03610)  
Rhode Island (LAO00308), USDA (S-44102)

Xenco-Atlanta (EPA Lab Code: GA00046):

Florida (E87428), North Carolina (483), South Carolina (98015), Utah (AALI1), West Virginia (362), Kentucky (85)  
Louisiana (04176), USDA (P330-07-00105)

Xenco-Miami (EPA Lab code: FL01152): Florida (E86678), Maryland (330)

Xenco-Tampa Mobile (EPA Lab code: FL01212): Florida (E84900)

Xenco-Odessa (EPA Lab code: TX00158): Texas (T104704400-08-TX)

Xenco-Dallas (EPA Lab code: TX01468): Texas (T104704295-08-TX)

Xenco-Corpus Christi (EPA Lab code: TX02613): Texas (T104704370-08-TX)

Xenco-Boca Raton (EPA Lab Code: FL00449): Florida (E86240),

South Carolina (96031001), Louisiana (04154), Georgia (917)

08-OCT-09

Project Manager: Liz Givens  
Trace Analysis, Inc.  
6701 Aberdeen Ave.  
Lubbock, TX 79424

Reference: XENCO Report No: 344989  
207616  
Project Address: ---

**Liz Givens:**

We are reporting to you the results of the analyses performed on the samples received under the project name referenced above and identified with the XENCO Report Number 344989. All results being reported under this Report Number apply to the samples analyzed and properly identified with a Laboratory ID number. Subcontracted analyses are identified in this report with either the NELAC certification number of the subcontract lab in the analyst ID field, or the complete subcontracted report attached to this report.

Unless otherwise noted in a Case Narrative, all data reported in this Analytical Report are in compliance with NELAC standards. Estimation of data uncertainty for this report is found in the quality control section of this report unless otherwise noted. Should insufficient sample be provided to the laboratory to meet the method and NELAC Matrix Duplicate and Matrix Spike requirements, then the data will be analyzed, evaluated and reported using all other available quality control measures.

The validity and integrity of this report will remain intact as long as it is accompanied by this letter and reproduced in full, unless written approval is granted by XENCO Laboratories. This report will be filed for at least 5 years in our archives after which time it will be destroyed without further notice, unless otherwise arranged with you. The samples received, and described as recorded in Report No. 344989 will be filed for 60 days, and after that time they will be properly disposed without further notice, unless otherwise arranged with you. We reserve the right to return to you any unused samples, extracts or solutions related to them if we consider so necessary (e.g., samples identified as hazardous waste, sample sizes exceeding analytical standard practices, controlled substances under regulated protocols, etc).

We thank you for selecting XENCO Laboratories to serve your analytical needs. If you have any questions concerning this report, please feel free to contact us at any time.

Respectfully,



**James Mathis**

Corpus Christi Lab Director

*Recipient of the Prestigious Small Business Administration Award of Excellence in 1994.*

*Certified and approved by numerous States and Agencies.*

*A Small Business and Minority Status Company that delivers SERVICE and QUALITY*

Houston - Dallas - San Antonio - Austin - Tampa - Miami - Atlanta - Corpus Christi - Latin America



## CASE NARRATIVE

*Client Name: Trace Analysis, Inc.*

*Project Name: 207616*

*Project ID: ---*

*Work Order Number: 344989*

*Report Date: 08-OCT-09*

*Date Received: 09/16/2009*

---

**Sample receipt non conformances and Comments:**

*Corpus will run Radium 226/228 (SPLP Extraction)*

---

**Sample receipt Non Conformances and Comments per Sample:**

None

**Analytical Non Conformances and Comments:**

*Batch: LBA-776192 RAM analysis by E901.1M*

None



# Certificate of Analysis Summary 344989

Trace Analysis, Inc., Lubbock, TX

Project Name: 207616

Project Id: ---

Contact: Liz Givens

Project Location: ---

Date Received in Lab: Wed Sep-16-09 10:00 am

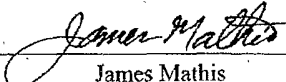
Report Date: 08-OCT-09

Project Manager: James Mathis

<i>Analysis Requested</i>	<i>Lab Id:</i>	344989-001					
	<i>Field Id:</i>	207616 SPLP Extract					
	<i>Depth:</i>						
	<i>Matrix:</i>	WATER					
	<i>Sampled:</i>	Aug-24-09 13:00					
RAM analysis by E901.1M NO_CERT#	<i>Extracted:</i>						
	<i>Analyzed:</i>	Oct-08-09 09:13					
	<i>Units/RL:</i>	pCi/L RL					
Radium-228		14.1 9.20					
Radium-226		11.8 6.00					

This analytical report, and the entire data package it represents, has been made for your exclusive and confidential use. The interpretations and results expressed throughout this analytical report represent the best judgment of XENCO Laboratories. XENCO Laboratories assumes no responsibility and makes no warranty to the end use of the data hereby presented. Our liability is limited to the amount invoiced for this work order unless otherwise agreed to in writing.

Since 1990 Houston - Dallas - San Antonio - Austin - Tampa - Miami - Latin America - Atlanta - Corpus Christi

  
James Mathis  
Corpus Christi Lab Director





## Flagging Criteria

- X** In our quality control review of the data a QC deficiency was observed and flagged as noted. MS/MSD recoveries were found to be outside of the laboratory control limits due to possible matrix /chemical interference, or a concentration of target analyte high enough to effect the recovery of the spike concentration. This condition could also effect the relative percent difference in the MS/MSD.
  - B** A target analyte or common laboratory contaminant was identified in the method blank. Its presence indicates possible field or laboratory contamination.
  - D** The sample(s) were diluted due to targets detected over the highest point of the calibration curve, or due to matrix interference. Dilution factors are included in the final results. The result is from a diluted sample.
  - E** The data exceeds the upper calibration limit; therefore, the concentration is reported as estimated.
  - F** RPD exceeded lab control limits.
  - J** The target analyte was positively identified below the MQL and above the SQL.
  - U** Analyte was not detected.
  - L** The LCS data for this analytical batch was reported below the laboratory control limits for this analyte. The department supervisor and QA Director reviewed data. The samples were either reanalyzed or flagged as estimated concentrations.
  - H** The LCS data for this analytical batch was reported above the laboratory control limits. Supporting QC Data were reviewed by the Department Supervisor and QA Director. Data were determined to be valid for reporting.
  - K** Sample analyzed outside of recommended hold time.
  - JN** A combination of the "N" and the "J" qualifier. The analysis indicates that the analyte is "tentatively identified" and the associated numerical value may not be consistent with the amount actually present in the environmental sample.
- BRL** Below Reporting Limit.
- RL** Reporting Limit
- \* Outside XENCO's scope of NELAC Accreditation.

*Recipient of the Prestigious Small Business Administration Award of Excellence in 1994.*

*Certified and approved by numerous States and Agencies.*

*A Small Business and Minority Status Company that delivers SERVICE and QUALITY*

Houston - Dallas - San Antonio - Corpus Christi - Midland/Odessa - Tampa - Miami - Latin America

	Phone	Fax
4143 Greenbriar Dr, Stafford, TX 77477	(281) 240-4200	(281) 240-4280
9701 Harry Hines Blvd, Dallas, TX 75220	(214) 902 0300	(214) 351-9139
5332 Blackberry Drive, San Antonio TX 78238	(210) 509-3334	(210) 509-3335
2505 North Falkenburg Rd, Tampa, FL 33619	(813) 620-2000	(813) 620-2033
5757 NW 158th St, Miami Lakes, FL 33014	(305) 823-8500	(305) 823-8555
12600 West I-20 East, Odessa, TX 79765	(432) 563-1800	(432) 563-1713
842 Cantwell Lane, Corpus Christi, TX 78408	(361) 884-0371	(361) 884-9116

LAB Order ID #

344989 Page \_\_\_\_\_ of \_\_\_\_\_

## TraceAnalysis, Inc.

6701 Aberdeen Avenue, Suite 8  
Lubbock, Texas 79424  
Tel (806) 794-1296  
Fax (806) 794-1298  
T(800) 378-1296

6002 Basin Street, Suite A  
Midland, Texas 79703  
Tel (432) 689-5301  
Fax (432) 689-6313

200 East Sunset Rd., Suite E  
El Paso, Texas 79922  
Tel (915) 585-3443  
Fax (915) 585-4944  
1 (888) 585-3143

BioAquatic Testing  
2501 Mayes Rd., Ste 100  
Carrollton, Texas 75005  
Tel (972) 242-7750

email: [lab@traceanalysis.com](mailto:lab@traceanalysis.com)

[illegible]

Phone #

Address: {Street, City, Zip}

Fax 禁

**Contact Person**

Small

Invoice to:  
(If different from above)

Project Name:

Project Location (including state):

**Sampler Signature:**

### ANALYSIS REQUEST

(Circle or Specify Method No.)

LAB # (LAB USE ONLY)	FIELD CODE	# CONTAINERS	Volume / Amount	MATRIX		PRESERVATIVE METHOD								SAMPLING		MTBE 8021 / 602 / 602 / 82 BTEX 8021 / 602 / 82 TPH 4108.1 / TX1006 / 6 THM 8018 GRO / DRO PAH 8270 / 828 Total Metals Ag As Ba Cd TCDF Metals Ag As Br TCDF Volatiles TCDF Semi Volatiles TCDF Pesticides TCDF GCMS Vol. 1260 / 626 GCMS Semi. Vol. 1267 PCBs 8032 / 608 Pesticides 8081 / 608 BOD, TSS, pH Monitors Content CI, FI, SO4, NO3, NO2 Na, Ca, Mg, K, TDS, E	Turn Around Time If diff	
				WATER	SOIL	AIR	SLUDGE	HCl	HNO3	H2SO4	NaOH	ICE	NONE	DATE	TIME			
	207616 SPLP Extract )		X											8/24/99	13:00		X SPLP Extract 207616	

Relinquished by:	Company:	Date:	Time:
------------------	----------	-------	-------

Received by:	Company:	Date:	Time:
--------------	----------	-------	-------

INST

LAB 10

REMARKS

Relinquished by:	Company:	Date:	Time:
------------------	----------	-------	-------

Received by: \_\_\_\_\_ Company: \_\_\_\_\_ Date: \_\_\_\_\_ Time: \_\_\_\_\_

COR  
INST

1

700-1111

Relinquished by: \_\_\_\_\_ Company: \_\_\_\_\_ Date: \_\_\_\_\_ Time: \_\_\_\_\_

Received by:	Company:	Date:	Time:
--------------	----------	-------	-------

CUR  
INT

51

☐ Dry Weight: B

Submittal of samples constitutes agreement to Terms and Conditions listed on reverse side of C. O. C.

ORIGINAL COPY

Carrier &amp;

LAB 10

REMARKS

14 Day TAT

☐ Dry Weight Basis Required  
☐ TRRP Report Required  
☐ Check if Special Reporting Limits Are Needed



Prelogin / Nonconformance Report - Sample Log-In

Client: Trace Analytical Inc  
Date/Time: 9/16/07  
Lab ID #: 344989  
Initials: BS

Sample Receipt Checklist

1. Samples on ice?	Blue	Water	No	23,4
2. Shipping container in good condition?	Yes	No	None	
3. Custody seals intact on shipping container (cooler) and bottles?	Yes	No	N/A	
4. Chain of Custody present?	Yes	No		
5. Sample instructions complete on chain of custody?	Yes	No		
6. Any missing / extra samples?	Yes	No		
7. Chain of custody signed when relinquished / received?	Yes	No		
8. Chain of custody agrees with sample label(s)?	Yes	No		
9. Container labels legible and intact?	Yes	No		
10. Sample matrix / properties agree with chain of custody?	Yes	No		
11. Samples in proper container / bottle?	Yes	No		
12. Samples properly preserved?	Yes	No	N/A	
13. Sample container intact?	Yes	No		
14. Sufficient sample amount for indicated test(s)?	Yes	No		
15. All samples received within sufficient hold time?	Yes	No		
16. Subcontract of sample(s)?	Yes	No	N/A	
17. VOC sample have zero head space?	Yes	No	N/A	
18. Cooler 1 No.	Cooler 2 No.	Cooler 3 No.	Cooler 4 No.	Cooler 5 No.
lbs °C	lbs °C	lbs °C	lbs °C	lbs °C

Nonconformance Documentation

Contact: \_\_\_\_\_ Contacted by: \_\_\_\_\_ Date/Time: \_\_\_\_\_

Regarding: \_\_\_\_\_

Corrective Action Taken: \_\_\_\_\_

Check all that apply: ☐ Client understands and would like to proceed with analysis  
☐ Cooling process had begun shortly after sampling event

## Summary Report

Jesse Rodriguez  
Sweatt Construction  
11382 Lovington Hwy.  
P.O. Box 827  
Artesia, NM 88210

Report Date: September 11, 2009

Work Order: 9082518



Project Name: Composite

Sample	Description	Matrix	Date Taken	Time Taken	Date Received
207616	Composite	soil	2009-08-24	13:00	2009-08-25

Sample - Field Code	BTEX				TPH 418.1	TPH DRO	TPH GRO
	Benzene (mg/Kg)	Toluene (mg/Kg)	Ethylbenzene (mg/Kg)	Xylene (mg/Kg)	TRPHC (mg/Kg)	DRO (mg/Kg)	GRO (mg/Kg)
207616 - Composite	<0.0200	<0.0200	<0.0200	<0.0200	122	179	3.19

### Sample: 207616 - Composite

Param	Flag	Result	Units	RL
SPLP Silver		<0.00300	mg/L	0.00300
SPLP Arsenic		<0.0100	mg/L	0.0100
SPLP Barium		0.695	mg/L	0.100
SPLP Cadmium		<0.00500	mg/L	0.00500
SPLP Chloride		2060	mg/L	0.500
SPLP Chromium		<0.00500	mg/L	0.00500
SPLP Cyanide		<0.0150	mg/L	0.0150
SPLP Fluoride		0.999	mg/L	0.200
SPLP Mercury		<0.000200	mg/L	0.000200
Nitrate-N		<0.200	mg/L	0.200
Naphthalene		<0.000200	mg/L	0.000200
Acenaphthylene		<0.000200	mg/L	0.000200
Acenaphthene		<0.000200	mg/L	0.000200
Dibenzofuran		<0.000200	mg/L	0.000200
Fluorene		<0.000200	mg/L	0.000200
Anthracene		<0.000200	mg/L	0.000200
Phenanthrene		<0.000200	mg/L	0.000200
Fluoranthene		<0.000200	mg/L	0.000200
Pyrene		<0.000200	mg/L	0.000200

continued ...

TraceAnalysis, Inc. • 6701 Aberdeen Ave., Suite 9 • Lubbock, TX 79424-1515 • (806) 794-1296

This is only a summary. Please, refer to the complete report package for quality control data.

sample 207616 continued ...

Param	Flag	Result	Units	RL
Benzo(a)anthracene		<0.000200	mg/L	0.000200
Chrysene		<0.000200	mg/L	0.000200
Benzo(b)fluoranthene		<0.000200	mg/L	0.000200
Benzo(k)fluoranthene		<0.000200	mg/L	0.000200
Benzo(a)pyrene		<0.000200	mg/L	0.000200
Indeno(1,2,3-cd)pyrene		<0.000200	mg/L	0.000200
Dibenzo(a,h)anthracene		<0.000200	mg/L	0.000200
Benzo(g,h,i)perylene		<0.000200	mg/L	0.000200
SPLP Lead		<0.0100	mg/L	0.0100
Total PCB		<0.000500	mg/L	0.000500
Aroclor 1016 (PCB-1016)		<0.000500	mg/L	0.000500
Aroclor 1221 (PCB-1221)		<0.000500	mg/L	0.000500
Aroclor 1232 (PCB-1232)		<0.000500	mg/L	0.000500
Aroclor 1242 (PCB-1242)		<0.000500	mg/L	0.000500
Aroclor 1248 (PCB-1248)		<0.000500	mg/L	0.000500
Aroclor 1254 (PCB-1254)		<0.000500	mg/L	0.000500
Aroclor 1260 (PCB-1260)		<0.000500	mg/L	0.000500
Aroclor 1268 (PCB-1268)		<0.000500	mg/L	0.000500
SPLP Selenium		<0.0500	mg/L	0.0500
SPLP U		<0.0500	mg/L	0.0500
Bromochloromethane		<1.00	µg/L	1.00
Dichlorodifluoromethane		<1.00	µg/L	1.00
Chloromethane (methyl chloride)		<1.00	µg/L	1.00
Vinyl Chloride		<1.00	µg/L	1.00
Bromomethane (methyl bromide)		<5.00	µg/L	5.00
Chloroethane		<1.00	µg/L	1.00
Trichlorofluoromethane		<1.00	µg/L	1.00
Acetone		<10.0	µg/L	10.0
Iodomethane (methyl iodide)		<5.00	µg/L	5.00
Carbon Disulfide		<1.00	µg/L	1.00
Acrylonitrile		<1.00	µg/L	1.00
2-Butanone (MEK)		<5.00	µg/L	5.00
4-Methyl-2-pentanone (MIBK)		<5.00	µg/L	5.00
2-Hexanone		<5.00	µg/L	5.00
trans 1,4-Dichloro-2-butene		<10.0	µg/L	10.0
1,1-Dichloroethene		<1.00	µg/L	1.00
Methylene chloride		41.6	µg/L	5.00
MTBE		<1.00	µg/L	1.00
trans-1,2-Dichloroethene		<1.00	µg/L	1.00
1,1-Dichloroethane		<1.00	µg/L	1.00
cis-1,2-Dichloroethene		<1.00	µg/L	1.00
2,2-Dichloropropane		<1.00	µg/L	1.00
1,2-Dichloroethane (EDC)		<1.00	µg/L	1.00
Chloroform		<1.00	µg/L	1.00
1,1,1-Trichloroethane		<1.00	µg/L	1.00
1,1-Dichloropropene		<1.00	µg/L	1.00
Benzene		<1.00	µg/L	1.00

continued ...

TraceAnalysis, Inc. • 6701 Aberdeen Ave., Suite 9 • Lubbock, TX 79424-1515 • (806) 794-1296

This is only a summary. Please, refer to the complete report package for quality control data.

sample 207616 continued

Param	Flag	Result	Units	RL
Carbon Tetrachloride		<1.00	µg/L	1.00
1,2-Dichloropropane		<1.00	µg/L	1.00
Trichloroethene (TCE)		<1.00	µg/L	1.00
Dibromomethane (methylene bromide)		<1.00	µg/L	1.00
Bromodichloromethane		<1.00	µg/L	1.00
2-Chloroethyl vinyl ether		<5.00	µg/L	5.00
cis-1,3-Dichloropropene		<1.00	µg/L	1.00
trans-1,3-Dichloropropene		<1.00	µg/L	1.00
Toluene		1.25	µg/L	1.00
1,1,2-Trichloroethane		<1.00	µg/L	1.00
1,3-Dichloropropane		<1.00	µg/L	1.00
Dibromochloromethane		<1.00	µg/L	1.00
1,2-Dibromoethane (EDB)		<1.00	µg/L	1.00
Tetrachloroethene (PCE)		<1.00	µg/L	1.00
Chlorobenzene		<1.00	µg/L	1.00
1,1,1,2-Tetrachloroethane		<1.00	µg/L	1.00
Ethylbenzene		<1.00	µg/L	1.00
m,p-Xylene		<1.00	µg/L	1.00
Bromoform		<1.00	µg/L	1.00
Styrene		<1.00	µg/L	1.00
o-Xylene		<1.00	µg/L	1.00
1,1,2,2-Tetrachloroethane		<1.00	µg/L	1.00
2-Chlorotoluene		<1.00	µg/L	1.00
1,2,3-Trichloropropane		<1.00	µg/L	1.00
Isopropylbenzene		<1.00	µg/L	1.00
Bromobenzene		<1.00	µg/L	1.00
n-Propylbenzene		<1.00	µg/L	1.00
1,3,5-Trimethylbenzene		<1.00	µg/L	1.00
tert-Butylbenzene		<1.00	µg/L	1.00
1,2,4-Trimethylbenzene		<1.00	µg/L	1.00
1,4-Dichlorobenzene (para)		<1.00	µg/L	1.00
sec-Butylbenzene		<1.00	µg/L	1.00
1,3-Dichlorobenzene (meta)		<1.00	µg/L	1.00
p-Isopropyltoluene		<1.00	µg/L	1.00
4-Chlorotoluene		<1.00	µg/L	1.00
1,2-Dichlorobenzene (ortho)		<1.00	µg/L	1.00
n-Butylbenzene		<1.00	µg/L	1.00
1,2-Dibromo-3-chloropropane		<5.00	µg/L	5.00
1,2,3-Trichlorobenzene		<5.00	µg/L	5.00
1,2,4-Trichlorobenzene		<5.00	µg/L	5.00
Naphthalene		<5.00	µg/L	5.00
Hexachlorobutadiene		<5.00	µg/L	5.00

TraceAnalysis, Inc. • 6701 Aberdeen Ave., Suite 9 • Lubbock, TX 79424-1515 • (806) 794-1296

*This is only a summary. Please, refer to the complete report package for quality control data.*

# THE NEW MEXICO STATE LAND OFFICE



## RIGHT OF WAY & WATER RESOURCES BUREAU SURFACE RESOURCES MANAGEMENT DIVISION

310 Old Santa Fe Trail  
P.O. Box 1148  
Santa Fe, NM 87504-1148  
Fax (505) 827-5741

*Anna Villa, Right of Way Leasing Manager 505-827-5789*

<i>Melissa Armijo, Management Analyst</i>	<i>505-827-5728</i>
<i>Patricia Esquibel, Management Analyst</i>	<i>505-827-5899</i>
<i>Anthony Vigil, Management Analyst</i>	<i>505-827-5710</i>
<i>Nick Jaramillo, Management Analyst</i>	<i>505-827-5773</i>
<i>Philip Garcia, Management Analyst</i>	<i>505-827-5842</i>
<i>Michael Quintana, Management Analyst</i>	<i>505-827-5734</i>

## ~FAX~ COVER PAGE

To: Jessie Rodriguez Fax #: (575) 391-0374

Company: Sweatt Construction inc. Date: February 11, 2010

From: Anthony Vigil (New Mexico State Land office) Number of pages: 2

*Including Cover Page*

Reference: Right of Entry (Remediation) Request Form

# New Mexico State Land Office

## Rights of Way Division

(505) 827-5842 P.O. Box 1148 Santa Fe, NM 87504



### RIGHT OF ENTRY (ROE) REQUEST FOR REMEDIATION

Company Name \_\_\_\_\_  
Address \_\_\_\_\_  
City, State, Zip \_\_\_\_\_  
Contact Person: \_\_\_\_\_  
Telephone #: \_\_\_\_\_  
Email: \_\_\_\_\_

Purpose of request: \_\_\_\_\_  
\_\_\_\_\_  
\_\_\_\_\_

Section \_\_\_\_\_ Township \_\_\_\_\_ Range \_\_\_\_\_ Unit Letter \_\_\_\_\_

Qtr/Qtr \_\_\_\_\_ County \_\_\_\_\_

GPS Location (decimal degrees): Latitude \_\_\_\_\_ W Longitude \_\_\_\_\_ N

If this is a remediation for a spill please attach a copy of the OCD C-141 form.

Is the completed C-141 attached? Yes ☐ No ☐

Square footage of spill impacted surface: \_\_\_\_\_

Estimated square footage of total disturbance: \_\_\_\_\_

Reclamation Plan (*attach addl. sheet if necessary*) \_\_\_\_\_  
\_\_\_\_\_  
\_\_\_\_\_

Driving directions from nearest state highway or road (*attach a map of the location*):  
\_\_\_\_\_  
\_\_\_\_\_  
\_\_\_\_\_

Lease number associated with the ROE request: \_\_\_\_\_

Well Name and/or Operator (if applicable): \_\_\_\_\_

Time expected to complete remediation: \_\_\_\_\_

Personnel present on State Land \_\_\_\_\_

Equipment & materials present on State Land \_\_\_\_\_

\$530.00 application fee (based on 180 days) can be renewed for up to 3 years.

Payable to: The Commissioner of Public Lands  
P. O. Box 1148  
Santa Fe, NM 87504-1148

Revised (08/2008)