

RM

DISTRICT I
1825 N. FRENCH DR., BOBBE, NM 88240

DISTRICT II
1801 W. GRAND AVENUE, ARTERIA, NM 88210

DISTRICT III
1000 Rio Brazos Ed., Artec, NM 87410

DISTRICT IV
1820 S. ST. FRANCIS DR., SANTA FE, NM 87505

State of New Mexico
Energy, Minerals and Natural Resources Department

OIL CONSERVATION DIVISION
1220 SOUTH ST. FRANCIS DR.
Santa Fe, New Mexico 87505

Form C-102
Revised October 12, 2005
Submit to Appropriate District Office
State Lease - 4 Copies
Fee Lease - 3 Copies

WELL LOCATION AND ACREAGE DEDICATION PLAT

AMENDED REPORT

API Number 30-015-37081	Pool Code 96718	Pool Name LOCO HILLS; GLORIETA-YESO
Property Code 302483	Property Name ELECTRA FEDERAL	Well Number 40
OGRID No. 229137	Operator Name COG OPERATING, LLC	Elevation 3701'

Surface Location

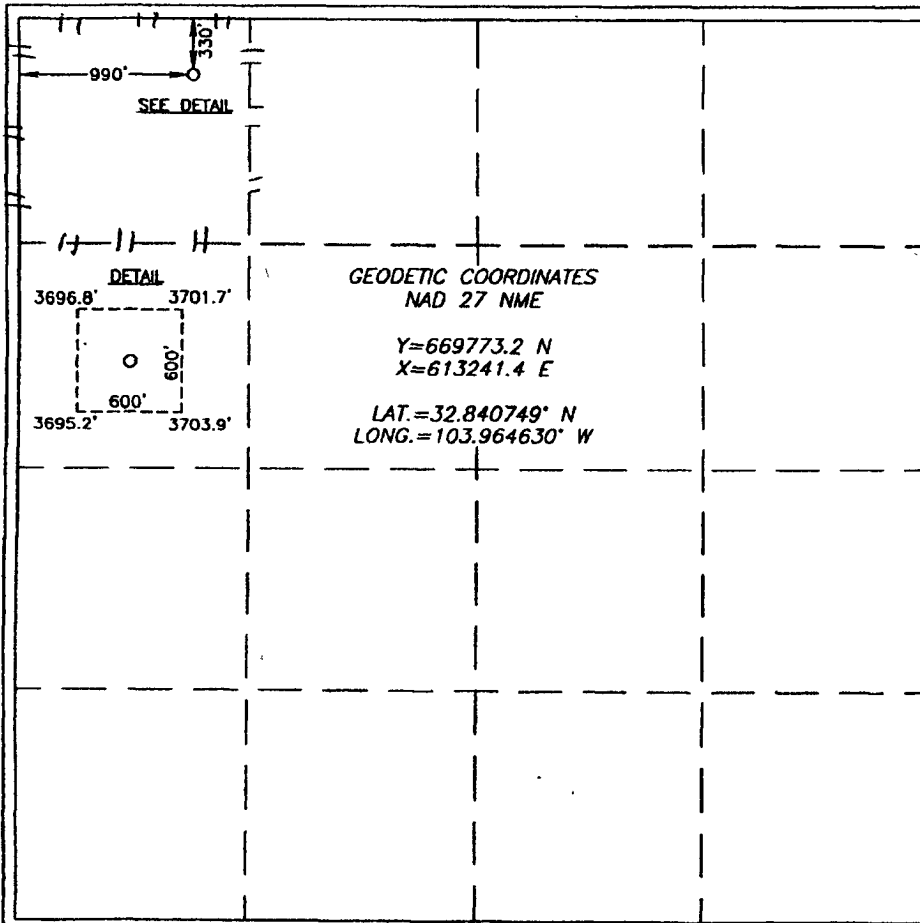
UL or lot No.	Section	Township	Range	Lot Idn	Feet from the	North/South line	Feet from the	East/West line	County
D	15	17-S	30-E		330	NORTH	990	WEST	EDDY

Bottom Hole Location If Different From Surface

UL or lot No.	Section	Township	Range	Lot Idn	Feet from the	North/South line	Feet from the	East/West line	County

Dedicated Acres 40	Joint or Infill	Consolidation Code	Order No.
-----------------------	-----------------	--------------------	-----------

NO ALLOWABLE WILL BE ASSIGNED TO THIS COMPLETION UNTIL ALL INTERESTS HAVE BEEN CONSOLIDATED OR A NON-STANDARD UNIT HAS BEEN APPROVED BY THE DIVISION



OPERATOR CERTIFICATION

I hereby certify that the information herein is true and complete to the best of my knowledge and belief, and that this organization either owns a working interest or unleased mineral interest in the land including the proposed bottom hole location or has a right to drill this well at this location pursuant to a contract with an owner of such mineral or working interest, or to a voluntary pooling agreement or a compulsory pooling order heretofore entered by the division.

Signature: Robyn Odom Date: 2/10/2009
Printed Name: Robyn Odom

SURVEYOR CERTIFICATION

I hereby certify that the well location shown on this plat was plotted from field notes of actual surveys made by me or under my supervision, and that the same is true and correct to the best of my belief.

Date Surveyed: JANUARY 30, 2009
Signature & Seal of Professional Surveyor: Ronald J. Eidson
Professional Surveyor Seal: RONALD J. EIDSON
Date: 2/5/09

Certificate No. GARY EIDSON 12841
RONALD J. EIDSON 3259

RM