

DISTRICT I
1625 N. French Dr., Hobbs, NM 88240

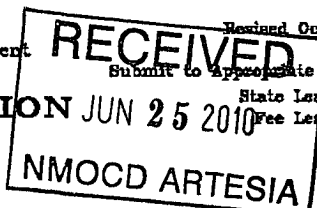
DISTRICT II
1301 W. Grand Avenue, Artesia, NM 88210

DISTRICT III
1000 Rio Blanco Rd., Aztec, NM 87410

DISTRICT IV
1820 S. St. Francis Dr., Santa Fe, NM 87505

State of New Mexico
Energy, Minerals and Natural Resources Department

OIL CONSERVATION DIVISION
1220 South St. Francis Dr.
Santa Fe, New Mexico 87505



Form C-102
Revised October 12, 2005
Submit to Appropriate District Office
State Lease - 4 Copies
Fee Lease - 3 Copies

WELL LOCATION AND ACREAGE DEDICATION PLAT

☐ AMENDED REPORT

API Number 30-015-37350	Pool Code 56405	Pool Name Shugart; Bone Spring, North ✓
Property Code 300582	Property Name WEST SHUGART "31" FEDERAL COM	Well Number 3
OGRID No. 162683	Operator Name CIMAREX ENERGY CO. OF COLORADO	Elevation 3555'

Surface Location

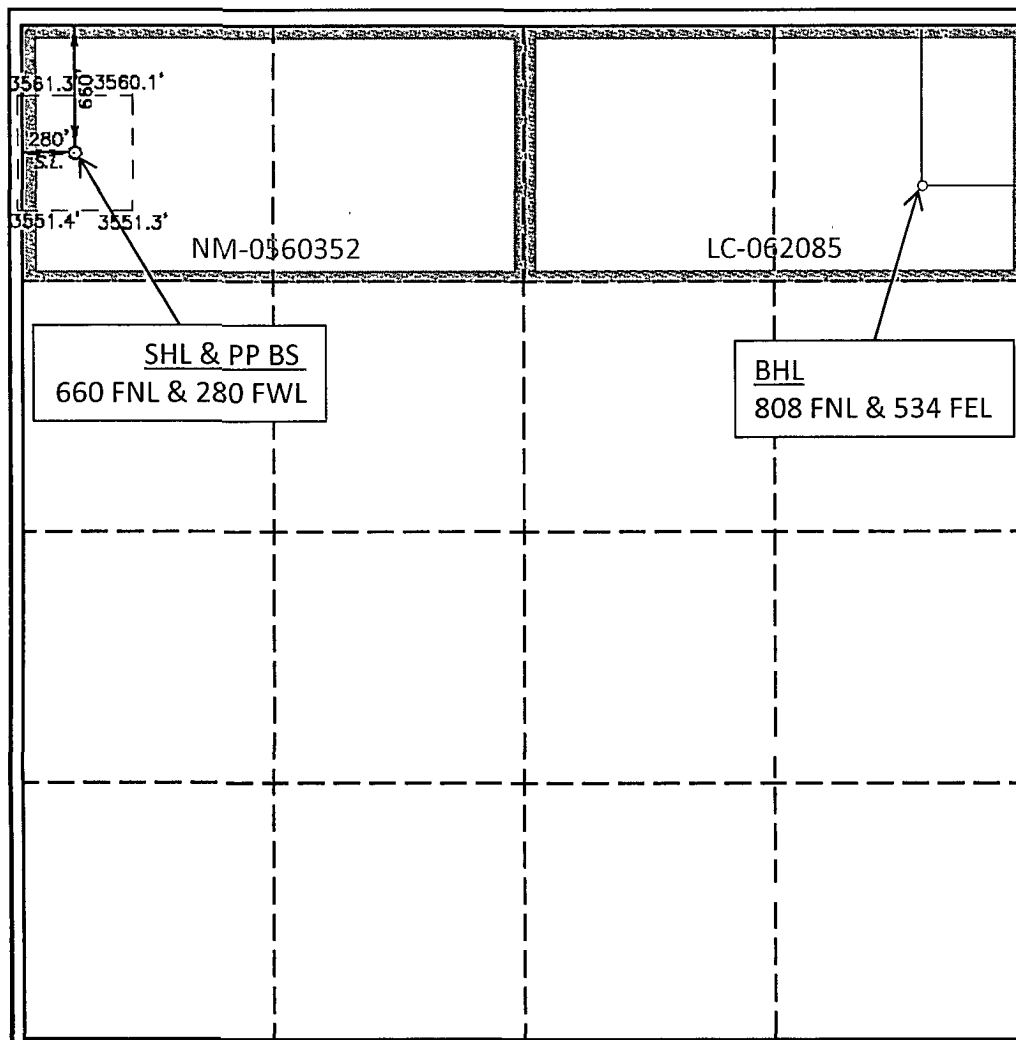
UL or lot No.	Section	Township	Range	Lot Idn	Feet from the	North/South line	Feet from the	East/West line	County
D	31	18 S	31 E		660	NORTH	280	WEST	EDDY

Bottom Hole Location If Different From Surface

UL or lot No.	Section	Township	Range	Lot Idn	Feet from the	North/South line	Feet from the	East/West line	County
A	31	18 S	31 E		808	NORTH	534	EAST	EDDY

Dedicated Acres 155.62	Joint or Infill	Consolidation Code P	Order No. NSL-6192
---------------------------	-----------------	-------------------------	-----------------------

NO ALLOWABLE WILL BE ASSIGNED TO THIS COMPLETION UNTIL ALL INTERESTS HAVE BEEN CONSOLIDATED
OR A NON-STANDARD UNIT HAS BEEN APPROVED BY THE DIVISION



OPERATOR CERTIFICATION

I hereby certify that the information contained herein is true and complete to the best of my knowledge and belief, and that this organization either owns a working interest or released mineral interest in the land including the proposed bottom hole location pursuant to a contract with an owner of such a mineral or working interest, or to a voluntary pooling agreement or a compulsory pooling order heretofore entered by the division.

Zeno Farris 5/28/2010
Signature Date
Zeno Farris
Printed Name

SURVEYOR CERTIFICATION

I hereby certify that the well location shown on this plat was plotted from field notes of actual surveys made by me or under my supervision, and that the same is true and correct to the best of my belief.

AUGUST 27 2010
Date Surveyed
Signature of Professional Surveyor
7977
Certificate No. Garry L. Jones 7977
BASIN SURVEYS

Acid, Fracture, Treatment, Cement Squeeze, etc. Attachment

West Shugart 31 Federal Com No. 3

31-18S-31E

Eddy County, NM

Frac Job #1 06-16-09 (meant for whole well, ended up only fracing toe)

Depth Interval	Amount and Type of Material Used
<u>Stage 1</u> 12990-13334	133,038 total gals, 1,228 gals of 15% HCL acid, 20,623 gals 20# Linear gel, 111,187 gals 20# XL Borate gel. Proppant pumped was 68,348# 20/40 White Sand & 35,303# SB Excel
<u>Stage 2</u> 12537-12990	158,254 total gals, 1,620 gals of 15% HCL acid, 39,878 gals 20# Linear gel, 114,918 gals 20# XL Borate gel. Proppant pumped was 63,906# 20/40 White Sand & 16,781# SB Excel
<u>Stage 3</u> 12128-12537	120,251 total gals, 1,199 gals of 15% HCL acid, 28,476 gals 20# Linear gel, 90,577 gals 20# XL Borate gel. Proppant pumped was 62,252# 20/40 White Sand & 28,846# SB Excel
<u>Stage 4</u> 11717-12128	127,730 total gals, 894 gals of 15% HCL acid, 26,446 gals 20# Linear gel, 101,284 gals 20# XL Borate gel. Proppant pumped was 50,978# 20/40 White Sand & 37,112# SB Excel
<u>Stage 5</u> 11268-11717	130,246 total gals, 1,571 gals of 15% HCL acid, 19,851 gals 20# Linear gel, 108,824 gals 20# XL Borate gel. Proppant pumped was 66,280# 20/40 White Sand & 30,334# SB Excel
<u>Stage 6</u> 10837-11268	128,111 total gals, 1,571 gals of 15% HCL acid, 20,248 gals 20# Linear gel, 107,863 gals 20# XL Borate gel. Proppant pumped was 68,316# 20/40 White Sand & 35,802# SB Excel
<u>Stage 7</u> 10400-10837	138,063 total gals, 1,506 gals of 15% HCL acid, 26,732 gals 20# Linear gel, 111,331 gals 20# XL Borate gel. Proppant pumped was 65,941# 20/40 White Sand & 37,807# SB Excel
<u>Stage 8</u> 9965-10400	133,807 total gals, 1,563 gals of 15% HCL acid, 23,792 gals 20# Linear gel, 104,452 gals 20# XL Borate gel. Proppant pumped was 68,511# 20/40 White Sand & 37,423# SB Excel
<u>Stage 9</u> 9545-9965	146,152 total gals, 4,636 gals of 15% HCL acid, 21,951 gals 20# Linear gel, 119,566 gals 20# XL Borate gel. Proppant pumped was 64,953# 20/40 White Sand & 35,430# SB Excel
<u>Stage 10</u> 9109-9545	109,304 total gals, 0 gals of 15% HCL acid, 14,529 gals 20# Linear gel, 94,775 gals 20# XL Borate gel. Proppant pumped was 72,636# 20/40 White Sand & 13,410# SB Excel