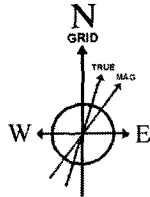




Mewbourne Oil Company

Mewbourne Oil Company

Location Eddy County, NM Slot No 1H SHL
 Field (Wyatt) Sec 24, T19S, R25E Well No 1H
 Facility Wyatt Draw 24 / 25 LE No 1H Wellbore No 1H PWB

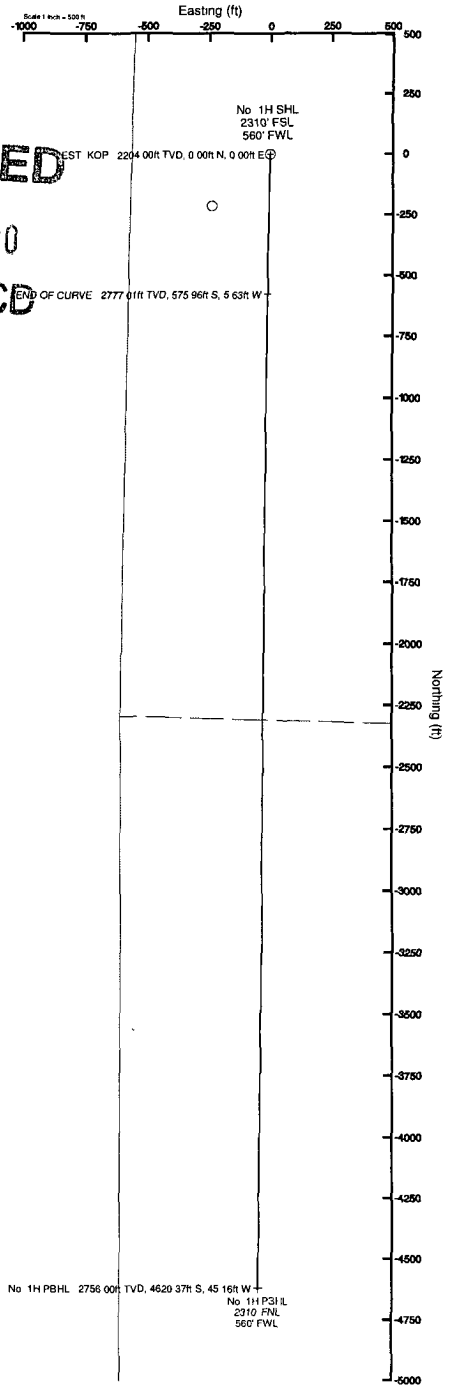


BGGM (1945 0 to 2011 0) Dip 60 46° Field 48925 3 nT
 Magnetic North is 8 18 degrees East of True North (at 7/1/2010)
 Grid North is 0 06 degrees West of True North

To correct azimuth from True to Grid add 0 06 degrees
 To correct azimuth from Magnetic to Grid add 8 24 degrees

For example if the Magnetic North Azimuth = 90 degs, then the Grid North Azimuth = 90 + 8 24 = 98 24

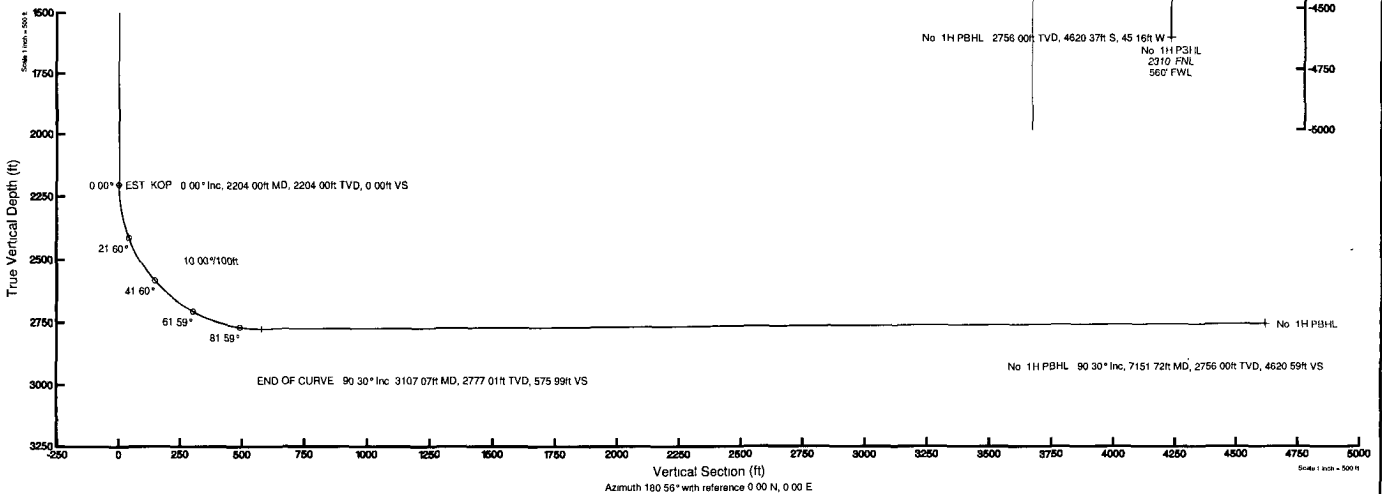
RECEIVED
JUL 27 2010
HOBBSOCD



Well Profile Data

Design Comment	MD (ft)	inc (°)	Az (°)	TVD (ft)	Local N (ft)	Local E (ft)	DLS (°/100ft)	VS (ft)
Tie On	0 00	0 000	180 560	0 00	0 00	0 00	0 00	0 00
EST KOP	2204 00	0 000	180 560	2204 00	0 00	0 00	0 00	0 00
END OF CURVE	3107 07	90 298	180 560	2777 01	-575 96	-5 63	10 00	575 99
No 1H PWB	7151 72	90 298	180 560	2756 00	-4620 37	-45 16	0 00	4620 59

Plot reference wellpath is Prelim 1	
True vertical depths are referenced to Rig 101 on No. 1H SHL (KB)	Grid System NAD 27 / TM New Mexico State Plane, Eastern Zone (300'), US feet
Measured depths are referenced to Rig 101 on No. 1H SHL (KB)	North reference Grid north
Rig 101 on No. 1H SHL (KB) to Mean Sea Level 3420 feet	Scale True distance
Mean Sea Level to Mud line (Facility Wyatt Draw 24 / 25 LE No 1H) -3413 feet	Depths are in feet
Coordinates are in feet referenced to Slot	Created by Victor Hernandez on 7/1/2010



Planned Wellpath Report

Mewbourne Oil Company

Prelim_1
Page 1 of 4



REFERENCE WELLPATH IDENTIFICATION

Operator	Mewbourne Oil Company	Slot	No. 1H SHL
Area	Eddy County, NM	Well	No. 1H
Field	(Wyatt) Sec 24, T19S, R25E	Wellbore	No. 1H PWB
Facility	Wyatt Draw 24 / 25 LE No. 1H		

REPORT SETUP INFORMATION

Projection System	NAD27 / TM New Mexico State Planes, Eastern Zone (3001), US feet	Software System	WellArchitect@ 2.0
North Reference	Grid	User	Victor Hernandez
Scale	0.99991	Report Generated	7/1/2010 at 4:12:26 PM
Convergence at slot	0.06° West	Database/Source file	WA_Midland/No._1H_PWB.xml

WELLPATH LOCATION

	Local coordinates		Grid coordinates		Geographic coordinates	
	North[ft]	East[ft]	Easting[USft]	Northing[USft]	Latitude	Longitude
Slot Location	0.00	0.00	465816.16	598480.55	32°38'42.994"N	104°26'39.806"W
Facility Reference Pt			465816.16	598480.55	32°38'42.994"N	104°26'39.806"W
Field Reference Pt			465816.16	598480.55	32°38'42.994"N	104°26'39.806"W

WELLPATH DATUM

Calculation method	Minimum curvature	Rig 101 on No. 1H SHL (KB) to GL	16.00ft
Horizontal Reference Pt	Slot	Rig 101 on No. 1H SHL (KB) to Mean Sea Level	3429.00ft
Vertical Reference Pt	Rig 101 on No. 1H SHL (KB)	GL to Mud Line (Facility)	0.00ft
MD Reference Pt	Rig 101 on No. 1H SHL (KB)	Section Origin	N 0.00, E 0.00 ft
Field Vertical Reference	Mean Sea Level	Section Azimuth	180.56°

Planned Wellpath Report

Mewbourne Oil Company

Prelim_1
Page 2 of 4



REFERENCE WELLPATH IDENTIFICATION

Operator	Mewbourne Oil Company	Slot	No. 1H SHL
Area	Eddy County, NM	Well	No. 1H
Field	(Wyatt) Sec 24, T19S, R25E	Wellbore	No. 1H PWB
Facility	Wyatt Draw 24 / 25 LE No. 1H		

WELLPATH DATA (53 stations) † = interpolated/extrapolated station

MD [ft]	Inclination [°]	Azimuth [°]	TVD [ft]	Vert Sect [ft]	North [ft]	East [ft]	Grid East [srv ft]	Grid North [srv ft]	Latitude	Longitude	DLS [°/100ft]	Comments
0.00	0.000	180.560	0.00	0.00	0.00	0.00	465816.16	598480.55	32°38'42.994"N	104°26'39.806"W	0.00	Tie On
2204.00	0.000	180.560	2204.00	0.00	0.00	0.00	465816.16	598480.55	32°38'42.994"N	104°26'39.806"W	0.00	EST. KOP
2304.00†	9.999	180.560	2303.49	8.70	-8.70	-0.09	465816.07	598471.85	32°38'42.908"N	104°26'39.806"W	10.00	
2404.00†	19.998	180.560	2399.96	34.55	-34.55	-0.34	465815.82	598446.00	32°38'42.652"N	104°26'39.809"W	10.00	
2504.00†	29.997	180.560	2490.48	76.75	-76.75	-0.75	465815.41	598403.81	32°38'42.234"N	104°26'39.813"W	10.00	
2604.00†	39.996	180.560	2572.30	134.03	-134.03	-1.31	465814.85	598346.53	32°38'41.668"N	104°26'39.819"W	10.00	
2704.00†	49.995	180.560	2642.92	204.65	-204.64	-2.00	465814.16	598275.93	32°38'40.969"N	104°26'39.826"W	10.00	
2804.00†	59.994	180.560	2700.22	286.46	-286.44	-2.80	465813.36	598194.13	32°38'40.159"N	104°26'39.835"W	10.00	
2904.00†	69.993	180.560	2742.43	376.97	-376.95	-3.68	465812.48	598103.64	32°38'39.264"N	104°26'39.844"W	10.00	
3004.00†	79.992	180.560	2768.30	473.43	-473.41	-4.63	465811.53	598007.18	32°38'38.309"N	104°26'39.854"W	10.00	
3104.00†	89.991	180.560	2777.02	572.93	-572.90	-5.60	465810.56	597907.70	32°38'37.325"N	104°26'39.864"W	10.00	
3107.07	90.298	180.560	2777.01	575.99	-575.96	-5.63	465810.53	597904.64	32°38'37.295"N	104°26'39.864"W	10.00	END OF CURVE
3204.00†	90.298	180.560	2776.50	672.92	-672.89	-6.58	465809.58	597807.72	32°38'36.336"N	104°26'39.874"W	0.00	
3304.00†	90.298	180.560	2775.98	772.92	-772.89	-7.55	465808.61	597707.74	32°38'35.346"N	104°26'39.884"W	0.00	
3404.00†	90.298	180.560	2775.47	872.92	-872.88	-8.53	465807.63	597607.75	32°38'34.357"N	104°26'39.895"W	0.00	
3504.00†	90.298	180.560	2774.95	972.92	-972.87	-9.51	465806.65	597507.77	32°38'33.367"N	104°26'39.905"W	0.00	
3604.00†	90.298	180.560	2774.43	1072.92	-1072.87	-10.49	465805.67	597407.78	32°38'32.378"N	104°26'39.915"W	0.00	
3704.00†	90.298	180.560	2773.91	1172.92	-1172.86	-11.46	465804.70	597307.80	32°38'31.388"N	104°26'39.925"W	0.00	
3804.00†	90.298	180.560	2773.39	1272.92	-1272.85	-12.44	465803.72	597207.81	32°38'30.399"N	104°26'39.935"W	0.00	
3904.00†	90.298	180.560	2772.87	1372.91	-1372.85	-13.42	465802.74	597107.83	32°38'29.410"N	104°26'39.946"W	0.00	
4004.00†	90.298	180.560	2772.35	1472.91	-1472.84	-14.40	465801.76	597007.84	32°38'28.420"N	104°26'39.956"W	0.00	
4104.00†	90.298	180.560	2771.83	1572.91	-1572.84	-15.37	465800.79	596907.86	32°38'27.431"N	104°26'39.966"W	0.00	
4204.00†	90.298	180.560	2771.31	1672.91	-1672.83	-16.35	465799.81	596807.87	32°38'26.441"N	104°26'39.976"W	0.00	
4304.00†	90.298	180.560	2770.79	1772.91	-1772.82	-17.33	465798.83	596707.89	32°38'25.452"N	104°26'39.986"W	0.00	
4404.00†	90.298	180.560	2770.27	1872.91	-1872.82	-18.31	465797.85	596607.90	32°38'24.462"N	104°26'39.997"W	0.00	
4504.00†	90.298	180.560	2769.75	1972.91	-1972.81	-19.28	465796.88	596507.92	32°38'23.473"N	104°26'40.007"W	0.00	
4604.00†	90.298	180.560	2769.23	2072.90	-2072.81	-20.26	465795.90	596407.93	32°38'22.484"N	104°26'40.017"W	0.00	
4704.00†	90.298	180.560	2768.71	2172.90	-2172.80	-21.24	465794.92	596307.95	32°38'21.494"N	104°26'40.027"W	0.00	
4804.00†	90.298	180.560	2768.19	2272.90	-2272.79	-22.22	465793.95	596207.96	32°38'20.505"N	104°26'40.038"W	0.00	
4904.00†	90.298	180.560	2767.67	2372.90	-2372.79	-23.19	465792.97	596107.98	32°38'19.515"N	104°26'40.048"W	0.00	

Planned Wellpath Report

Mewbourne Oil Company

Prelim_1
Page 3 of 4



REFERENCE WELLPATH IDENTIFICATION

Operator	Mewbourne Oil Company	Slot	No. 1H SHL
Area	Eddy County, NM	Well	No. 1H
Field	(Wyatt) Sec 24, T19S, R25E	Wellbore	No. 1H PWB
Facility	Wyatt Draw 24 / 25 LE No. 1H		

WELLPATH DATA (53 stations) † = interpolated/extrapolated station

MD [ft]	Inclination [°]	Azimuth [°]	TVD [ft]	Vert Sect [ft]	North [ft]	East [ft]	Grid East [srv ft]	Grid North [srv ft]	Latitude	Longitude	DLS [°/100ft]	Comments
5004.00†	90.298	180.560	2767.15	2472.90	-2472.78	-24.17	465791.99	596008.00	32°38'18.526"N	104°26'40.058"W	0.00	
5104.00†	90.298	180.560	2766.64	2572.90	-2572.78	-25.15	465791.01	595908.01	32°38'17.536"N	104°26'40.068"W	0.00	
5204.00†	90.298	180.560	2766.12	2672.90	-2672.77	-26.13	465790.04	595808.03	32°38'16.547"N	104°26'40.078"W	0.00	
5304.00†	90.298	180.560	2765.60	2772.90	-2772.76	-27.10	465789.06	595708.04	32°38'15.558"N	104°26'40.089"W	0.00	
5404.00†	90.298	180.560	2765.08	2872.89	-2872.76	-28.08	465788.08	595608.06	32°38'14.568"N	104°26'40.099"W	0.00	
5504.00†	90.298	180.560	2764.56	2972.89	-2972.75	-29.06	465787.10	595508.07	32°38'13.579"N	104°26'40.109"W	0.00	
5604.00†	90.298	180.560	2764.04	3072.89	-3072.74	-30.04	465786.13	595408.09	32°38'12.589"N	104°26'40.119"W	0.00	
5704.00†	90.298	180.560	2763.52	3172.89	-3172.74	-31.01	465785.15	595308.10	32°38'11.600"N	104°26'40.129"W	0.00	
5804.00†	90.298	180.560	2763.00	3272.89	-3272.73	-31.99	465784.17	595208.12	32°38'10.610"N	104°26'40.140"W	0.00	
5904.00†	90.298	180.560	2762.48	3372.89	-3372.73	-32.97	465783.19	595108.13	32°38'09.621"N	104°26'40.150"W	0.00	
6004.00†	90.298	180.560	2761.96	3472.89	-3472.72	-33.95	465782.22	595008.15	32°38'08.632"N	104°26'40.160"W	0.00	
6104.00†	90.298	180.560	2761.44	3572.88	-3572.71	-34.92	465781.24	594908.16	32°38'07.642"N	104°26'40.170"W	0.00	
6204.00†	90.298	180.560	2760.92	3672.88	-3672.71	-35.90	465780.26	594808.18	32°38'06.653"N	104°26'40.180"W	0.00	
6304.00†	90.298	180.560	2760.40	3772.88	-3772.70	-36.88	465779.29	594708.19	32°38'05.663"N	104°26'40.191"W	0.00	
6404.00†	90.298	180.560	2759.88	3872.88	-3872.70	-37.86	465778.31	594608.21	32°38'04.674"N	104°26'40.201"W	0.00	
6504.00†	90.298	180.560	2759.36	3972.88	-3972.69	-38.83	465777.33	594508.22	32°38'03.684"N	104°26'40.211"W	0.00	
6604.00†	90.298	180.560	2758.84	4072.88	-4072.68	-39.81	465776.35	594408.24	32°38'02.695"N	104°26'40.221"W	0.00	
6704.00†	90.298	180.560	2758.33	4172.88	-4172.68	-40.79	465775.38	594308.25	32°38'01.706"N	104°26'40.231"W	0.00	
6804.00†	90.298	180.560	2757.81	4272.88	-4272.67	-41.77	465774.40	594208.27	32°38'00.716"N	104°26'40.242"W	0.00	
6904.00†	90.298	180.560	2757.29	4372.87	-4372.66	-42.74	465773.42	594108.29	32°37'59.727"N	104°26'40.252"W	0.00	
7004.00†	90.298	180.560	2756.77	4472.87	-4472.66	-43.72	465772.44	594008.30	32°37'58.737"N	104°26'40.262"W	0.00	
7104.00†	90.298	180.560	2756.25	4572.87	-4572.65	-44.70	465771.47	593908.32	32°37'57.748"N	104°26'40.272"W	0.00	
7151.72	90.298	180.560	2756.00 [†]	4620.59	-4620.37	-45.16	465771.00	593860.60	32°37'57.276"N	104°26'40.277"W	0.00	No. 1H PBHL

Planned Wellpath Report

 Mewbourne Oil Company

Prelim_1
Page 4 of 4



REFERENCE WELLPATH IDENTIFICATION

Operator	Mewbourne Oil Company	Slot	No. 1H SHL
Area	Eddy County, NM	Well	No. 1H
Field	(Wyatt) Sec 24, T19S, R25E	Wellbore	No. 1H PWB
Facility	Wyatt Draw 24 / 25 LE No. 1H		

TARGETS

Name	MD [ft]	TVD [ft]	North [ft]	East [ft]	Grid East [srv ft]	Grid North [srv ft]	Latitude	Longitude	Shape
1) No. 1H PBHL	7151.72	2756.00	-4620.37	-45.16	465771.00	593860.60	32°37'57.276"N	104°26'40.277"W	point

SURVEY PROGRAM Ref Wellbore: No. 1H PWB Ref Wellpath: Prelim_1

Start MD [ft]	End MD [ft]	Positional Uncertainty Model	Log Name/Comment	Wellbore
16.00	7151.72	NaviTrak (Standard)		No. 1H PWB