

UNITED STATES
DEPARTMENT OF THE INTERIOR
BUREAU OF LAND MANAGEMENT

OCD Artesia

FORM APPROVED
OMB No 1004-0137
Expires July 31, 2010

SUNDRY NOTICES AND REPORTS ON WELLS

Do not use this form for proposals to drill or to re-enter an abandoned well. Use Form 3160-3 (APD) for such proposals.

5. Lease Serial No

NM-80645

6 If Indian, Allottee or Tribe Name

NA

7 If Unit or CA/Agreement, Name and/or No.

NA

8 Well Name and No.

Lily ALY Federal #1

9 API Well No

30-015-27262

10. Field and Pool or Exploratory Area

Ingle Wells; Delaware

11 County or Parish, State

Eddy County, New Mexico

SUBMIT IN TRIPLICATE - Other instructions on page 2.

1 Type of Well



Oil Well



Gas Well



Other

2 Name of Operator

Yates Petroleum Corporation

3a Address

105 S. 4th Str., Artesia, NM 88210

3b Phone No. (include area code)

575-748-1471

4 Location of Well (Footage, Sec., T., R., M., OR Survey Description)

660'FNL & 660'FEL of Section 3-T24S-R31E (Unit A, NENE)

RECEIVED

OCT 15 2010

NM OCD ARTESIA

12. CHECK APPROPRIATE BOX(ES) TO INDICATE NATURE OF NOTICE, REPORT, OR OTHER DATA

TYPE OF SUBMISSION

TYPE OF ACTION



Notice of Intent



Subsequent Report



Final Abandonment Notice



Acidize



Alter Casing



Casing Repair



Change Plans



Convert to Injection



Deepen



Fracture Treat



New Construction



Plug and Abandon



Plug Back



Production (Start/Resume)



Reclamation



Recomplete



Temporarily Abandon



Water Disposal



Water Shut-Off



Well Integrity



Other

13. Describe Proposed or Completed Operation: Clearly state all pertinent details, including estimated starting date of any proposed work and approximate duration thereof. If the proposal is to deepen directionally or recomplete horizontally, give subsurface locations and measured and true vertical depths of all pertinent markers and zones. Attach the Bond under which the work will be performed or provide the Bond No. on file with BLM/BIA. Required subsequent reports must be filed within 30 days following completion of the involved operations. If the operation results in a multiple completion or recompletion in a new interval, a Form 3160-4 must be filed once testing has been completed. Final Abandonment Notices must be filed only after all requirements, including reclamation, have been completed and the operator has determined that the site is ready for final inspection.

Yates Petroleum Corporation plans to plug and abandon this well as follows:

1. MIRU WSU. Rig up any safety equipment as needed. No casing recovery will be attempted. WOC with tubing.
2. Set a CIBP at 6632'. Cap with 112', 25 sx Class "C" cement plug from 6520'-6632'. This puts a plug over the open Cherry Canyon perforations and across DV tool.
3. Spot a 46 sx Class "C" cement plug from 3947'-4409'. This puts a 462' plug across top of Delaware and across Intermediate casing shoe. WOC and tag plug.
4. Perforate and spot a 25 sx cement plug from 2215'-2315'. This puts a 100' plug in between the two casing plugs, inside and outside casing.
5. Perforate, circulate to surface and spot a 140 sx cement plug from 583' up to surface. This puts a 583' plug across Surface casing shoe up to surface, inside and outside casing.
6. Remove all surface equipment, weld dry hole marker and clean location as per regulations.

Due to the volume of wells we currently have plans to plug, both State/Fee and Federal, Yates Petroleum respectfully requests a time frame of 1 year to have commenced plugging operations and for this notice of intent to be in affect.

NOTE: Yates Petroleum Corporation will use steel pits and no earth pits

14 I hereby certify that the foregoing is true and correct

Name (Printed/Typed)

Tina Huerta

Title Regulatory Compliance Supervisor

Signature

Date

September 23, 2010

THIS SPACE FOR FEDERAL OR STATE OFFICE USE

Approved by

Title

Date

Conditions of approval, if any, are attached. Approval of this notice does not warrant or certify that the applicant holds legal or equitable title to those rights in the subject lease which would entitle the applicant to conduct operations thereon.

Office

OCT 13 2010
/s/ Dustin Winkler

Title 18 U.S.C. Section 1001 and Title 43 U.S.C. Section 1212, make it a crime for any person knowingly and willfully to make or to cause to be made any false, fictitious or fraudulent statements or representations as to any matter within its jurisdiction.

(Instructions on page 2)

SEE ATTACHED FOR
CONDITIONS OF APPROVALRECLAMATION PROCEDURE
ATTACHED

WELL NAME: Lily ALY Fed #1

FIELD: Inglewells Delaware

LOCATION: 660' FNL & 660' FEL Sec 3-24S-31E

Eddy County

GL: 3,459' ZERO: KB: 3,474'

SPUD DATE: 01/26/94 COMPLETION DATE: 03/31/94

COMMENTS: API No. 30-015-27262

CASING PROGRAM

13-3/8" 54.5# J55 ST&C	533'
8-5/8" 32# J55 ST&C	4,260'
5 1/2" 17# J55 LT&C	762'
5 1/2" 15.5# J55 LT&C	6,033'
5 1/2" 17# J55 LT&C	1,505'
	8,300'

Current

Formation Tops:

Rustler : 650'
 TOS : 970'
 BOS : 4,131'
 Delaware : 4,359'
 Cherry Canyon : 5,347'
 Brushy Canyon : 7,021'
 Bone Springs : 8,225'

17-1/2" Hole

11" Hole

7 7/8" Hole

13-3/8" @ 533'
w/ 525 sx (circ)

TOC @ 2,922' by CBL

8-5/8" @ 3,997'
w/ 1,650 sx (Circ)

DV Tool @ 6,570'

Cherry Canyon: 6,682'-86' (5), 6,696'-6700' (5), 6,766'-72' (7), 6,808'-12' (5)

Brushy Canyon: 7,241'-57' (11)

Brushy Canyon: 8,013'-25', 8,156'-65' (17)

5 1/2" @ 8,300' Cmt w/
 1st Stage - 345 sx (circ)
 2nd Stage - 590 sx

CIBP @ 7,191' + 35' cmt

FC 8,255'

TD 8,300'

Not to Scale

10/26/09
MMFH

WELL NAME: Lily ALY Fed #1 FIELD: Inglewells Delaware

LOCATION: 660' FNL & 660' FEL Sec 3-24S-31E Eddy County

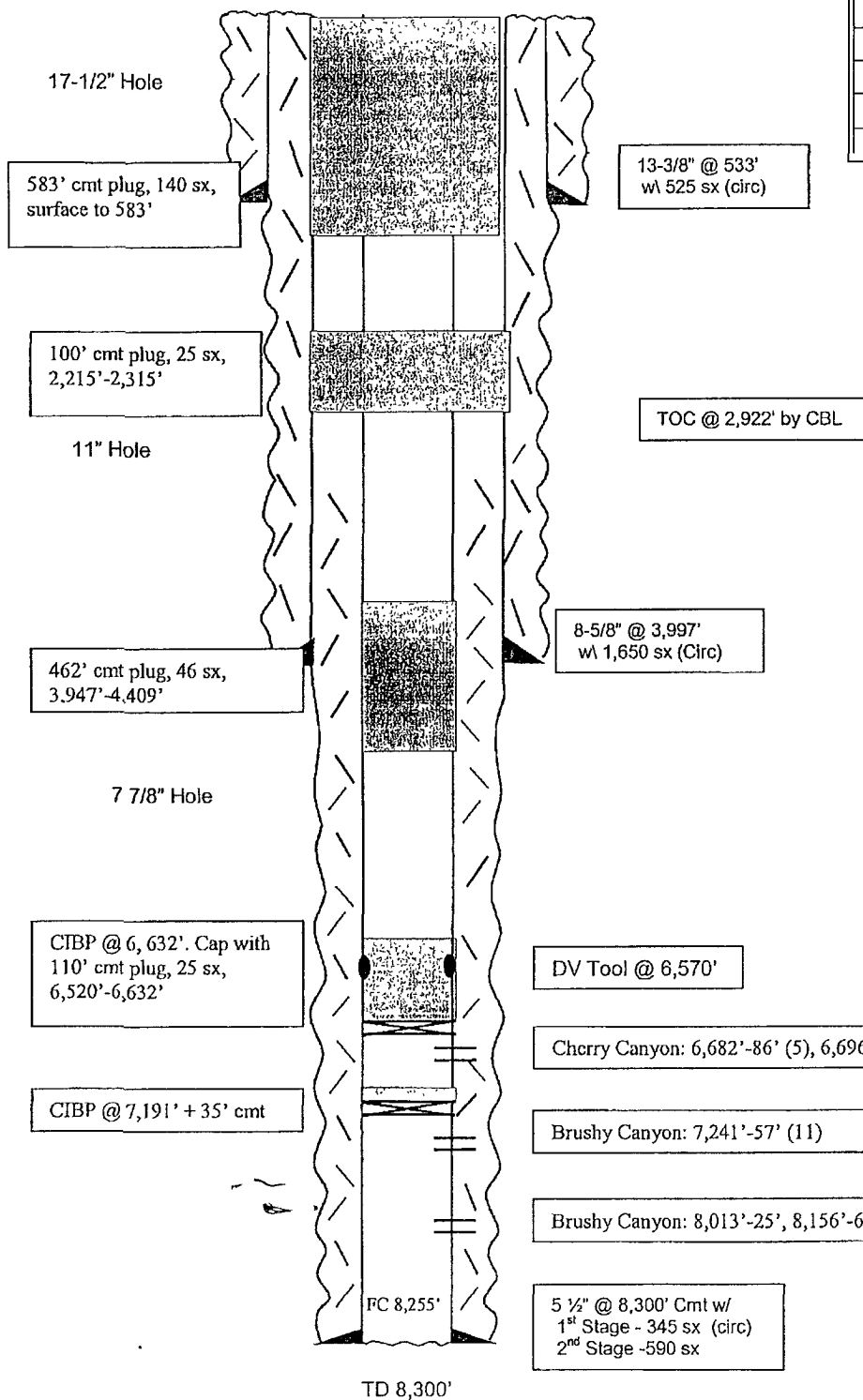
GL: 3,459' ZERO: KB: 3,474'

SPUD DATE: 01/26/94 COMPLETION DATE: 03/31/94

COMMENTS: API No. 30-015-27262

CASING PROGRAM

13-3/8" 54.5# J55 ST&C	533'
8-5/8" 32# J55 ST&C	4,260'
5 1/2" 17# J55 LT&C 762'	
5 1/2" 15.5# J55 LT&C 6,033'	
5 1/2" 17# J55 LT&C 1,505'	8,300'



AFTER

Formation Tops:

Rustler : 650'
TOS : 970'
BOS : 4,131'
Delaware : 4,359'
Cherry Canyon : 5,347'
Brushy Canyon : 7,021'
Bone Springs : 8,225'

Not to Scale

10/26/09
MMFH

Yates Petroleum Corporation
NM-80645: Lily ALY Federal #1
API: 30-015-27262
Eddy County, New Mexico

RE: Plugging and Abandonment Requirements, Conditions of Approval

1. Tag existing CIBP at 7156' – Otherwise OK
2. WOC and tag at 6520' or shallower – Otherwise OK (Perfs – DV Tool)
3. Tag at 3947' or shallower – Otherwise OK (Delaware – BOS – Casing shoe)
4. Move: Perf and squeeze a 110' plug (minimum 25sx) from 1020'-910'. WOC and tag at 910' or shallower – Otherwise OK (TOS)
5. OK (Surface)
6. Verify that all annuluses have cement to surface and fill in as required. Ground level dry hole marker shall be used in the area; Requirements attached – Otherwise OK
7. Submit a subsequent report to the BLM.

H₂S monitoring equipment shall be on location. Extension of one year from date of approval to finish plugging this well granted. Well to be plugged by 10/13/11.

See attached standard COAs.

DHW 101310

Requirements for ground level dry hole markers
Well Identification Markers
Conditions of Approval (COA)

The BLM Carlsbad Field Office (CFO) Conditions of Approval (COA) Requires that ground level dry hole markers be placed on well within the Lesser Prairie Chicken habitat area. The dry hole markers will be to the following specifications. The operator will construct the markers as follows:

1. An 8 inch X 8 inch steel plate 1/8 to 3/16 of an inch thick is to be placed on the old dry hole marker stand pipe 2 inches from ground level, in the Lesser Prairie Chicken habitat area.
2. Steel plate may be welded or bolted approximately 2 inches from ground level on the stand pipes. If plates are bolted to the stand pipe, the person installing the plate will be required to weld a pipe collar on the plate and place a minimum of two set screws/bolt on each collar. Aluminum data plates may be bolted with minimum 1/4 inch bolt and locking nuts or self tapping fine threaded screws. A minimum of one in each corner is to be installed on each plate.
3. An 8 inch x 8 inch aluminum plate, which is 12 gauge or .080 sign material (1/8 inch aluminum plate may be used in place of the .080 plate) with the required information for that well stamped or engraved in a minimum 3/8 inch tall letter or number.
4. The following information will be stamped or engraved on the 8 inch X 8 inch aluminum plate in the following order.
 - a. First row: Operators name
 - b. Second row: Well name and number
 - c. Third row: Legal location to include 1/4 1/4, Section, Township, and range. If the legal location cannot be placed on one row it can be split into two rows with the 1/4 1/4 (example: 1980 FNL 1980 FWL) being on the top row.
 - d. Fourth row: Lease Number and API number.
 - i. Example marker plate: (attached)

NMOCD Order No. R-12965 also required the operator to notify NMOCD when this type of dry hole marker is used. This can be done on the subsequent report of abandonment which is submitted to the BLM after the well is plugged. State that a ground level dry hole marker was installed as required in the COA's from the BLM.

BUREAU OF LAND MANAGEMENT

**Carlsbad Field Office
620 East Greene Street
Carlsbad, New Mexico 88220
575-234-5972**

Permanent Abandonment of Federal Wells Conditions of Approval

Failure to comply with the following Conditions of Approval may result in a Notice of Incidents of Noncompliance (INC) in accordance with 43 CFR 3163.1.

1. Plugging operations shall commence within **ninety (90)** days from the approval date of this Notice of Intent to Abandon.

If you are unable to plug the well by the 90th day provide this office, prior to the 90th day, with the reason for not meeting the deadline and a date when we can expect the well to be plugged. Failure to do so will result in enforcement action.

The rig used for the plugging procedure cannot be released and moved off without the prior approval of the authorized officer. Failure to do so may result in enforcement action.

2. **Notification:** Contact the appropriate BLM office at least 24 hours prior to the commencing of any plugging operations. For wells in Chaves and Roosevelt County, call 575-627-0272; Eddy County, call 575-361-2822; Lea County, call 575-393-3612.

3. **Blowout Preventers:** A blowout preventer (BOP), as appropriate, shall be installed before commencing any plugging operation. The BOP must be installed and maintained as per API and manufacturer recommendations. The minimum BOP requirement is a 2M system for a well not deeper than 9,090 feet; a 3M system for a well not deeper than 13,636 feet; and a 5M system for a well not deeper than 22,727 feet.

4. **Mud Requirement:** Mud shall be placed between all plugs. Minimum consistency of plugging mud shall be obtained by mixing at the rate of 25 sacks (50 pounds each) of gel per 100 barrels of brine water. Minimum nine (9) pounds per gallon.

5. **Cement Requirement:** Sufficient cement shall be used to bring any required plug to the specified depth and length. Any given cement volumes on the proposed plugging procedure are merely estimates and are not final. Unless specific approval is received, no plug except the surface plug shall be less than 25 sacks of cement. In lieu of a cement plug in a cased hole, a bridge plug set within 50 feet to 100 feet above the perforations shall be capped with 25 sacks of cement. If a bailer is used to cap this plug, 35 feet of cement shall be sufficient. Any plug that requires a tag will have a minimum WOC time of 4 hours.

Unless otherwise specified in the approved procedure, the cement plug shall consist of either Neat Class "C", for up to 7,500 feet of depth or Neat Class "H", for deeper than 7,500 feet plugs.

6. Dry Hole Marker: All casing shall be cut-off at the base of the cellar or 3 feet below final restored ground level (whichever is deeper). **The BLM is to be notified when the wellhead is cut off to verify that cement is to surface in the casing and all annuluses.** The well bore shall then be capped with a 4-inch pipe, 10-feet in length, 4 feet above ground and embedded in cement. The following information shall be permanently inscribed on the dry hole marker: well name and number, name of the operator, lease serial number, surveyed location (quarter-quarter section, section, township and range or other authorized survey designation acceptable to the authorized officer such as metes and bounds).

7. Subsequent Plugging Reporting: Within 30 days after plugging work is completed, file one original and five copies of the Subsequent Report of Abandonment, Form 3160-5 to BLM. The report should give in detail the manner in which the plugging work was carried out, the extent (by depths) of cement plugs placed, and the size and location (by depths) of casing left in the well. **Show date well was plugged.**

8. Trash: All trash, junk and other waste material shall be contained in trash cages or bins to prevent scattering and will be removed and deposited in an approved sanitary landfill. Burial on site is not permitted.

Following the submission and approval of the Subsequent Report of Abandonment, surface restoration will be required. See attached reclamation procedure.

DHW 112309



United States Department of the Interior

BUREAU OF LAND MANAGEMENT

Carlsbad Field Office
620 E. Greene St.
Carlsbad, New Mexico 88220-6292
www.blm.gov/nm



In Reply Refer To: 1310

Reclamation Objectives and Procedures

Reclamation Objective: Oil and gas development is one of many uses of the public lands and resources. While development may have a short- or long-term effect on the land, successful reclamation can ensure the effect is not permanent. During the life of the development, all disturbed areas not needed for active support of production operations should undergo "interim" reclamation in order to minimize the environmental impacts of development on other resources and uses. At final abandonment, well locations, production facilities, and access roads must undergo "final" reclamation so that the character and productivity of the land and water are restored.

The long-term objective of final reclamation is to set the course for eventual ecosystem restoration, including the restoration of the natural vegetation community, hydrology, and wildlife habitats. In most cases this means returning the land to a condition approximating or equal to that which existed prior to the disturbance. The final goal of reclamation is to restore the character of the land and water to its pre-disturbance condition. The operator is generally not responsible for achieving full ecological restoration of the site. Instead, the operator must achieve the short-term stability, visual, hydrological, and productivity objectives of the surface management agency and take steps necessary to ensure that long-term objectives will be reached through natural processes.

To achieve these objectives, remove any and all contaminants, scrap/trash, equipment, pipelines and powerlines. Strip and remove caliche, contour the location to blend with the surrounding landscape, re-distribute the native soils, provide erosion control as needed, rip and seed as specified in the original APD COA. This will apply to well pads, facilities, and access roads. Barricade access road at the starting point. If reserve pits have not reclaimed due to salts or other contaminants, submit a plan for approval, as to how you propose to provide adequate restoration of the pit area.

1. The Application for Permit to Drill or Reenter (APD, Form 3160-3), Surface Use Plan of Operations must include adequate measures for stabilization and reclamation of disturbed lands. Oil and Gas operators must plan for reclamation, both interim and final, up front in the APD process as per Onshore Oil and Gas Order No. 1.

2. For wells and/or access roads not having an approved plan, or an inadequate plan for surface reclamation (either interim or final reclamation), the operator must submit a proposal describing the procedures for reclamation. For interim reclamation, the appropriate time for submittal would be when filing the Well Completion or Recompletion Report and Log (Form 3160-4). For final reclamation, the appropriate time for submittal would be when filing the Notice of Intent, or the Subsequent Report of Abandonment, Sundry Notices and Reports on Wells (Form 3160-5). Interim reclamation is to be completed within 6 months of well completion, and final reclamation is to be completed within 6 months of well abandonment.
3. The operator must file a Subsequent Report Plug and Abandonment (Form 3160-5) following the plugging of a well.
4. Previous instruction had you waiting for a BLM specialist to inspect the location and provide you with reclamation requirements. If you have an approved Surface Use Plan of Operation and/or an approved Sundry Notice, you are free to proceed with reclamation as per approved APD. If you have issues or concerns, contact a BLM specialist to assist you. It would be in your interest to have a BLM specialist look at the location and access road prior to the removal of reclamation equipment to ensure that it meets BLM objectives. Upon conclusion submit a Form 3160-5, Subsequent Report of Reclamation. This will prompt a specialist to inspect the location to verify work was completed as per approved plans.
5. The approved Subsequent Report of Reclamation will be your notice that the native soils, contour and seedbed have been reestablished. If the BLM objectives have not been met the operator will be notified and corrective actions may be required.
6. It is the responsibility of the operator to monitor these locations and/or access roads until such time as the operator feels that the BLM objective has been met. If after two growing seasons the location and/or access roads are not showing the potential for successful revegetation, additional actions may be needed. When you feel the BLM objectives have been met submit a Final Abandonment Notice (FAN), Form 3160-5, stating that all reclamation requirements have been achieved and the location and/or access road is ready for a final abandonment inspection.
7. At this time the BLM specialist will inspect the location and/or access road. If the native soils and contour have been restored, and the revegetation is successful, the FAN will be approved, releasing the operator of any further liability of the location and/or access road. If the location and/or access road have not achieved the objective, you will be notified as to additional work needed or additional time being needed to achieve the objective.

If there are any questions, please feel free to contact any of the following specialists:

Jim Amos
Supervisory Environmental Protection Specialist
575-234-5909, 575-361-2648 (Cell)

Cody Layton
Natural Resource Specialist
575-234-5959

Terry Gregston
Environmental Protection Specialist
575-234-5958

Trishia Bad Bear
Natural Resource Specialist
575-393-3612

Bobby Ballard
Environmental Protection Specialist
575-234-2230

Todd Suter
Surface Protection Specialist
575-234-5987

Randy Rust
Natural Resource Specialist
575-234-5943

Doug Hoag
Civil Engineering Technician
575-234-5979

Linda Denniston
Environmental Protection Specialist
575-234-5974

Tanner Nygren
Natural Resource Specialist
575-234-5975

Jennifer Van Curen
Environmental Protection Specialist
575-234-5905

John Fast
Natural Resource Specialist
575-234-5996

Justin Frye
Environmental Protection Specialist
575-234-5922