

30-015-22958

This form is not to be used  
For reporting Packer Leakage  
Test in Northwest New Mexico

NEW MEXICO OIL CONSERVATION DIVISION  
SOUTHEAST NEW MEXICO PACKER LEAKAGE TEST

Revised June 9, 2003

Operator Murchison Oil & Gas Lease Maralo Federal Well No. 1  
Location Of Well: Unit \_\_\_\_\_ Section 22 Township T17S Range R27E County Eddy

	Name of Reservoir or Pool	Type of Prod. (Oil or Gas)	Method of Prod. (Flow Art. Lift)	Prod. Medium (Tbg. Or Cag.)	Choke Size
Upper Completion	Atoka	None	None	CSG	
Lower Completion	Morrow	Gas	Lift	TBG	

**FLOW TEST NO. 1**Both zones shut-in at (hour, date): 10/13/2010 10:40am

Well opened at (hour, date): 10/14/2010 10:40am Upper Completion Lower Completion  
Indicate by (X) the zone producing..... XXX  
Pressure at beginning of test..... 1432# 326#  
Stabilized? (Yes or No)..... Yes Yes  
Maximum pressure during test..... 1440# 326#  
Minimum pressure during test..... 1420# 38#  
Pressure at conclusion of test..... 1440# 162#  
Pressure change during test (Maximum minus Minimum)..... 20# 288#  
Was pressure change an increase or a decrease?..... Increase Decrease  
Well closed at (hour, date): 10/15/2010 10:40am Total Time On Production 24 hours  
Oil Production Gas Production  
During Test: 0 bbls; Grav. \_\_\_\_\_; During Test 96.7 MCF; GOR \_\_\_\_\_  
Remarks: Atoka is not hooked up or produced

**FLOW TEST NO. 2**

Both zones shut-in at (hour, date): \_\_\_\_\_  
Well opened at (hour, date): \_\_\_\_\_ Upper Completion Lower Completion  
Indicate by (X) the zone producing.....  
Pressure at beginning of test.....  
Stabilized? (Yes or No).....  
Maximum pressure during test.....  
Minimum pressure during test.....  
Pressure at conclusion of test.....  
Pressure change during test (Maximum minus Minimum).....  
Was pressure change an increase or a decrease?.....  
Well closed at (hour, date): \_\_\_\_\_ Total Time On Production \_\_\_\_\_  
Oil Production Gas Production  
During Test: \_\_\_\_\_ bbls; Grav. \_\_\_\_\_; During Test \_\_\_\_\_ MCF; GOR \_\_\_\_\_  
Remarks: \_\_\_\_\_

hereby certify that the information herein contained is true and complete to the best of my knowledge.

Approved 12/29 20 10  
New Mexico Oil Conservation Division

by Richard Inae  
Title COMPLIANCE OFFICER

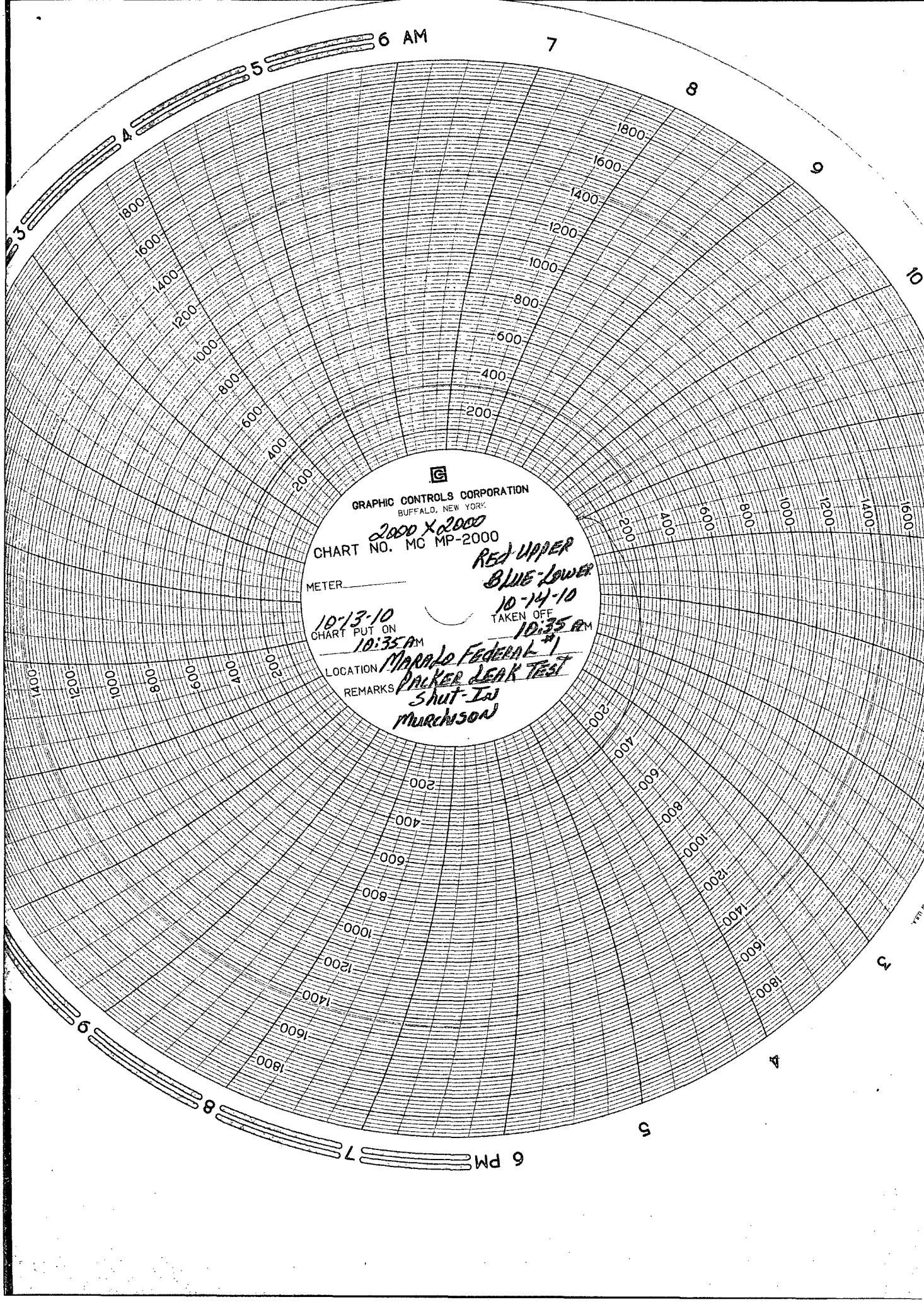
Operator Wildcat Measurement Service, Inc.

By Don Norman

Title Don Norman/Technician

E-mail Address dnorman@wildcatms.com

Date 10/26/2010



GRAPHIC CONTROLS CORPORATION  
BUFFALO, NEW YORK

2000 X 2000  
CHART NO. MC MP-2000

METER \_\_\_\_\_

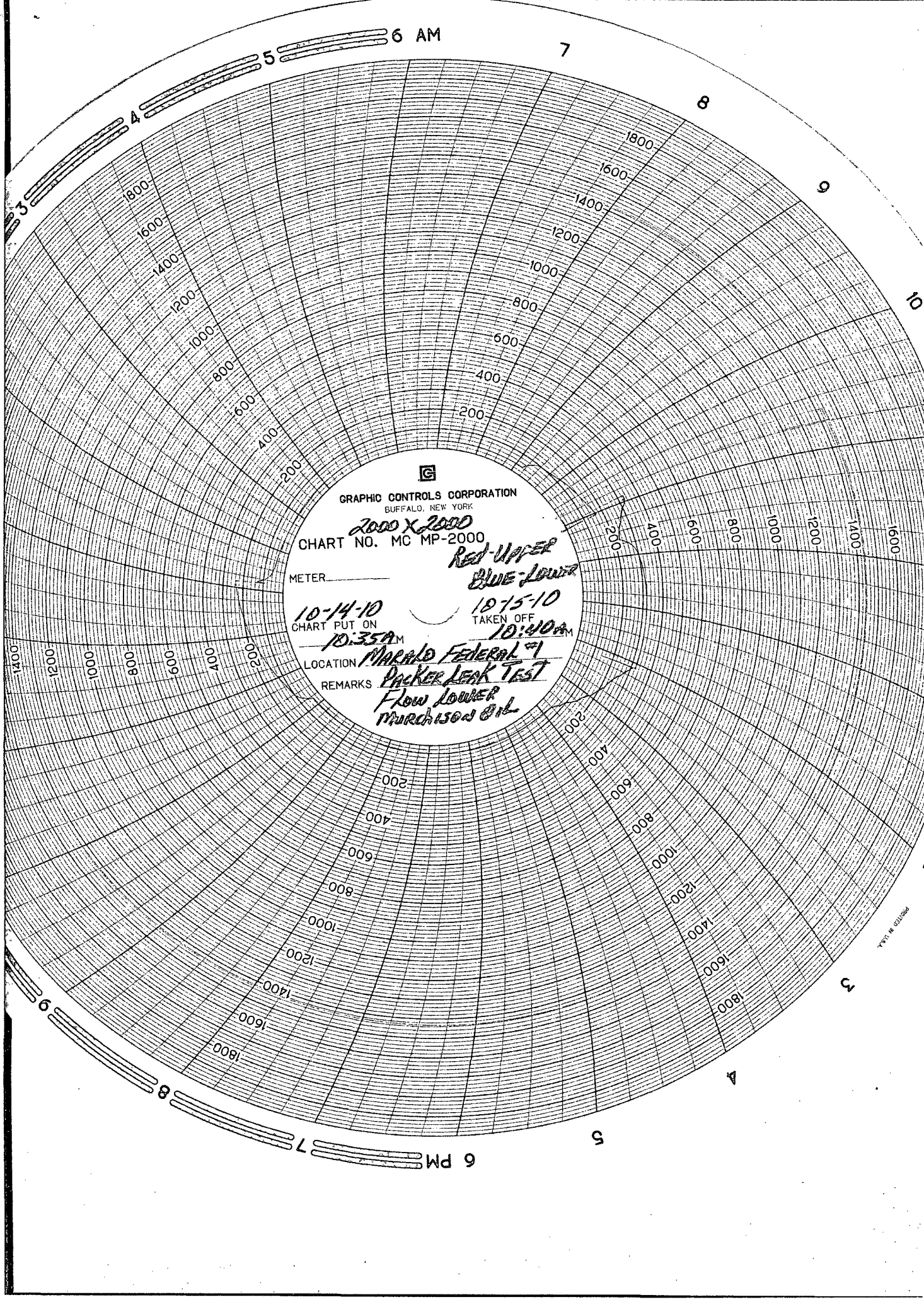
RED UPPER  
BLUE LOWER

10-13-10  
CHART PUT ON  
10:35 AM

10-14-10  
TAKEN OFF  
10:35 AM

LOCATION *MARALO FEDERAL #1*

REMARKS *PACKER LEAK TEST*  
*SHUT-IN*  
*MURCHISON*



GRAPHIC CONTROLS CORPORATION  
BUFFALO, NEW YORK

2000 X 2000  
CHART NO. MC MP-2000

METER \_\_\_\_\_

10-14-10  
CHART PUT ON  
10:35A

10-15-10  
TAKEN OFF  
10:40A

LOCATION MARALD FEDERAL #1  
REMARKS PACKER LEAK TEST  
Flow Lower  
MURCHISON OIL

PRINTED IN U.S.A.