

## COG Operating LLC

30-015-38343

**Hydrogen Sulfide Drilling Operation Plan****I. HYDROGEN SULFIDE TRAINING**

All personnel, whether regularly assigned, contracted, or employed on an unscheduled basis, will receive training from a qualified instructor in the following areas prior to commencing drilling operations on this well:

1. The hazards and characteristics of hydrogen sulfide (H<sub>2</sub>S)
2. The proper use and maintenance of personal protective equipment and life support systems.
3. The proper use of H<sub>2</sub>S detectors, alarms, warning systems, briefing areas, evacuation procedures, and prevailing winds.
4. The proper techniques for first aid and rescue procedures.

In addition, supervisory personnel will be trained in the following areas:

1. The effects of H<sub>2</sub>S on metal components. If high tensile tubular are to be used, personnel will be trained in their special maintenance requirements.
2. Corrective action and shut-in procedures when drilling or reworking a well and blowout prevention and well control procedures.
3. The contents and requirements of the H<sub>2</sub>S Drilling Operations Plan and Public Protection Plan.

There will be an initial training session just prior to encountering a known or probable H<sub>2</sub>S zone (within 3 days or 500 feet) and weekly H<sub>2</sub>S and well control drills for all personnel in each crew. The initial training session shall include a review of the site specific H<sub>2</sub>S Drilling Operations Plan and the Public Protection Plan. **The concentrations of H<sub>2</sub>S of wells in this area from surface to TD are low enough that a contingency plan is not required.**

## II. H2S SAFETY EQUIPMENT AND SYSTEMS

Note: All H2S safety equipment and systems will be installed, tested, and operational when drilling reaches a depth of 500 feet above, or three days prior to penetrating the first zone containing or reasonable expected to contain H2S.

### 1. Well Control Equipment:

- A. Flare line.
- B. Choke manifold.
- C. Blind rams and pipe rams to accommodate all pipe sizes with properly sized closing unit.
- D. Auxiliary equipment may include if applicable: annular preventer & rotating head.

### 2. Protective equipment for essential personnel:

- A. Mark II Survive air 30-minute units located in the doghouse and at briefing areas, as indicated on well site diagram.

### 3. H2S detection and monitoring equipment:

- A. 1 portable H2S monitors positioned on location for best coverage and response. These units have warning lights and audible sirens when H2S levels of 20 PPM are reached.

### 4. Visual warning systems:

- A. Wind direction indicators as shown on well site diagram (Exhibit #8).
- B. Caution/Danger signs (Exhibit #7) shall be posted on roads providing direct access to location. Signs will be painted a high visibility yellow with black lettering of sufficient size to be readable at a reasonable distance from the immediate location. Bilingual signs will be used, when appropriate. See example attached.

### 5. Mud program:

- A. The mud program has been designed to minimize the volume of H2S circulated to surface. Proper mud weight, safe drilling practices, and the use of H2S scavengers will minimize hazards when penetrating H2S bearing zones.

**6. Metallurgy:**

- A. All drill strings, casings, tubing, wellhead, blowout preventer, drilling spool, kill lines, choke manifold and lines, and valves shall be suitable for H<sub>2</sub>S service.
- B. All elastomers used for packing and seals shall be H<sub>2</sub>S trim.

**7. Communication:**

- A. Radio communications in company vehicles including cellular telephone and 2-way radio.
- B. Land line (telephone) communication at Office.

**8. Well testing:**

- A. Drill stem testing will be performed with a minimum number of personnel in the immediate vicinity, which are necessary to safely and adequately conduct the test. The drill stem testing will be conducted during daylight hours and formation fluids will not be flowed to the surface. All drill-stem-testing operations conducted in an H<sub>2</sub>S environment will use the closed chamber method of testing.
- B. There will be no drill stem testing.

**EXHIBIT #7**

**WARNING**  
**YOU ARE ENTERING AN H<sub>2</sub>S**  
**AUTHORIZED PERSONNEL ONLY**

- 1. BEARDS OR CONTACT LENSES NOT ALLOWED
- 2. HARD HATS REQUIRED
- 3. SMOKING IN DESIGNATED AREAS ONLY
- 4. BE WIND CONSCIOUS AT ALL TIMES
- 5. CHECK WITH COG OPERATING FOREMAN AT

**COG OPERATING LLC**  
**1-432-683-7443**  
**1-575-746-2010**

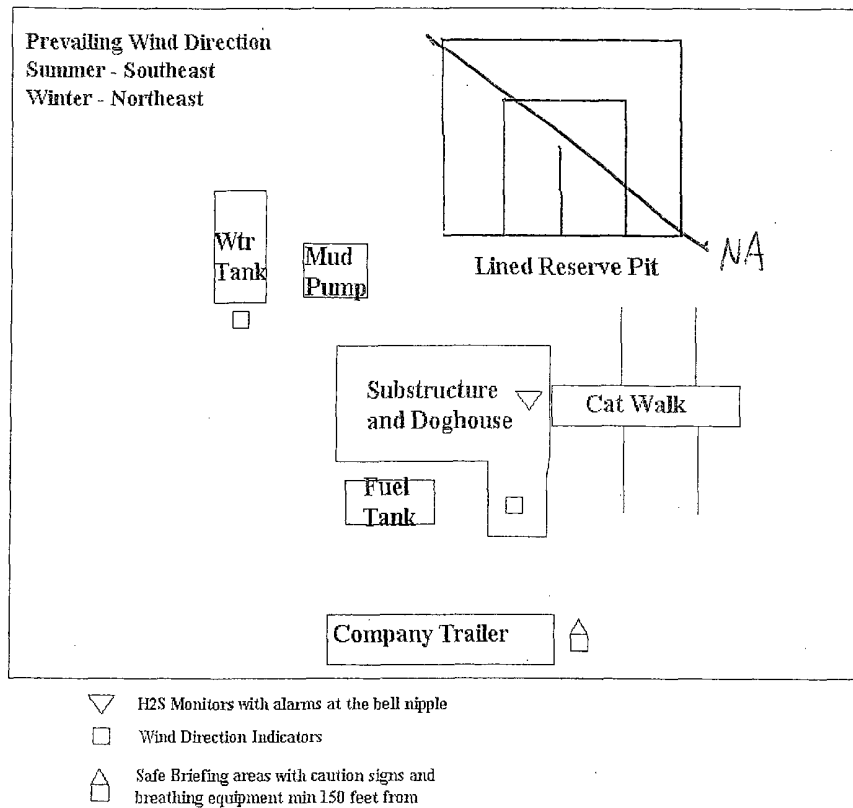
**EDDY COUNTY EMERGENCY NUMBERS**

ARTESIA FIRE DEPT. 575-746-5050  
ARTESIA POLICE DEPT. 575-746-5000  
EDDY CO. SHERIFF DEPT. 575-746-9888

**LEA COUNTY EMERGENCY NUMBERS**

HOBBS FIRE DEPT. 575-397-9308  
HOBBS POLICE DEPT. 575-397-9285  
LEA CO. SHERIFF DEPT. 575-396-1196

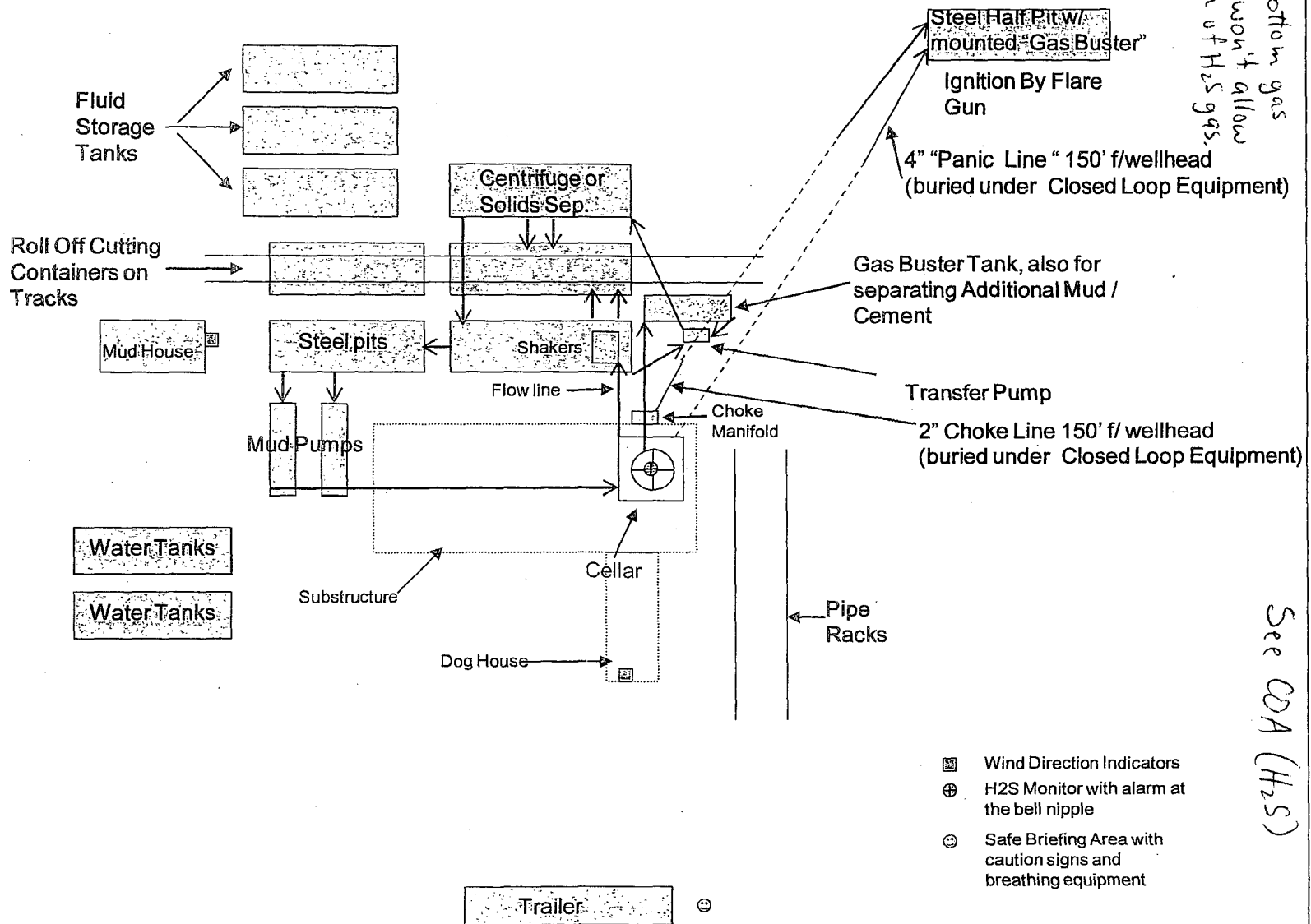
# DRILLING LOCATION H<sub>2</sub>S SAFETY EQUIPMENT Exhibit # 8



COG Operating LLC

# Drilling Location - H2S Safety Equipment Diagram

## EXHIBIT 8



## Closed Loop Operation & Maintenance Procedure

All drilling fluid circulated over shaker(s) with cuttings discharged into roll off container.

Fluid and fines below shaker(s) are circulated with transfer pump through centrifuge(s) or solids separator with cuttings and fines discharged into roll off container.

Fluid is continuously re-circulated through equipment with polymer added to aid separation of cutting fines.

Roll off containers are lined and de-watered with fluids re-circulated into system.

Additional tank is used to capture unused drilling fluid or cement returns from casing jobs.

This equipment will be maintained 24 hrs./day by solids control personnel and or rig crews that stay on location.

Cuttings will be hauled to either:

CRI (permit number R9166)

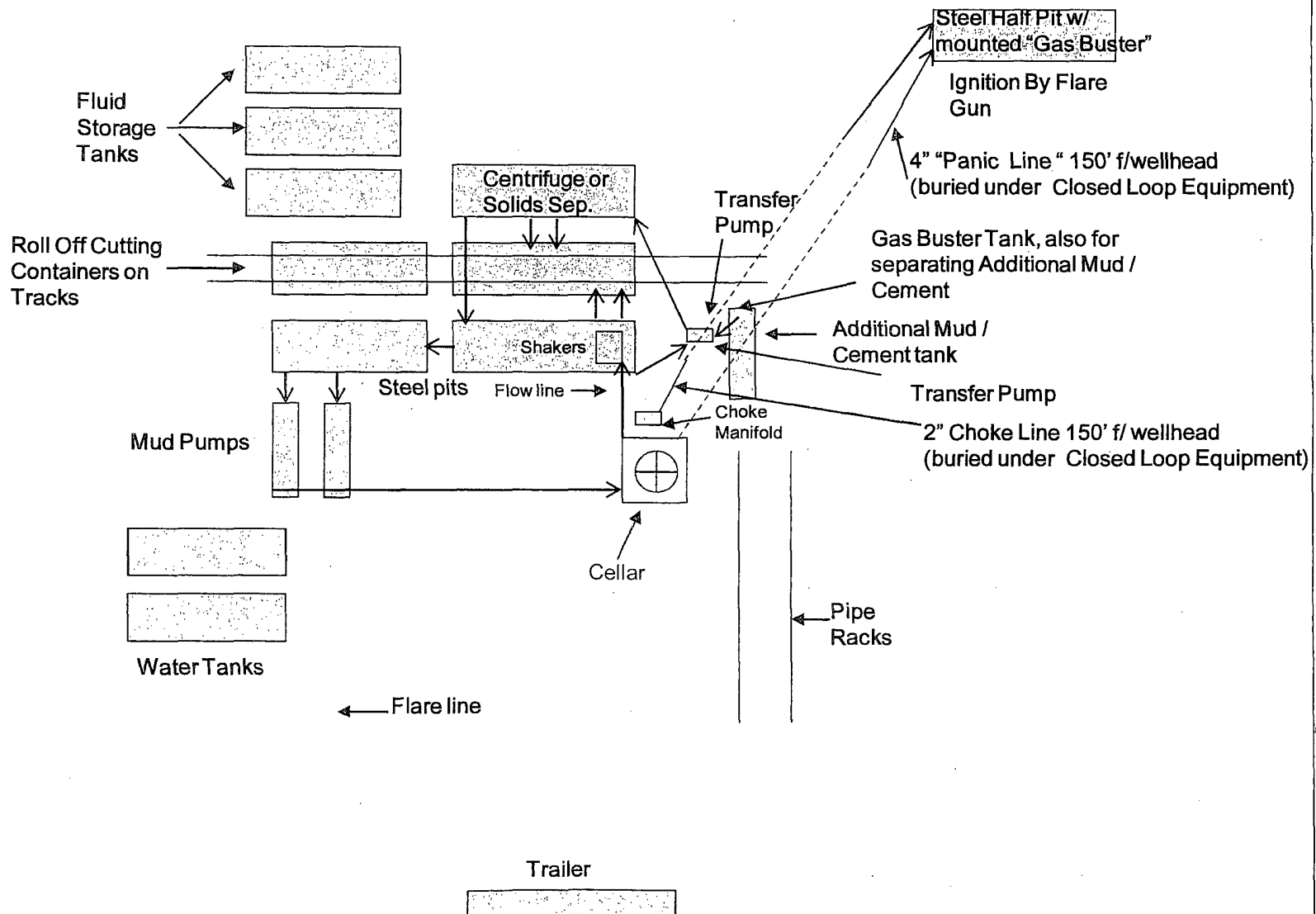
or

GMI (permit number 711-019-001)

dependent upon which rig is available to drill this well.

COG Operating LLC

Closed Loop Equipment Diagram



See 1st diagram

## **SURFACE USE AND OPERATING PLAN**

### **1. Existing & Proposed Access Roads**

- A. The well site survey and elevation plat for the proposed well is shown in Exhibit #1. It was staked by John West Engineering, Hobbs, NM.
- B. All roads to the location are shown in the topographic map Exhibit #2. The existing lease roads are illustrated and are adequate for travel during drilling and production operations. Upgrading existing roads prior to drilling the well will be done where necessary.
- C. **Directions to Location:** From the intersection US Highway 82 and Co. Rd. 223 (Sweet Gum Road), Go North-Northwest on County Road #223 apprx 0.4 mile. Turn Right & Go East apprx 0.6 mile. Turn Right & Go South apprx 0.1 mile. Turn Right & Go West-Southwest apprx 0.2 mile to the Skelly Unit #116 well pad. The location stake is apprx 90' Southeast of well pad. See Vicinity Map, Exhibit #3.
- D. Routine grading and maintenance of existing roads will be conducted as necessary to maintain their condition as long as any operations continue on this lease. Roads will be maintained according to specifications in section 2A of this Surface Use and Operating Plan.

### **2. Proposed Access Road:**

Exhibit #4 shows that 0' of new access road will be required for this location. If any road is required it will be constructed as follows:

- A. The maximum width of the running surface will be 14'. The road will be crowned, ditched and constructed of 6" rolled and compacted caliche. Ditches will be at 3:1 slope and 4 feet wide. Water will be diverted where necessary to avoid ponding, prevent erosion, maintain good drainage, and to be consistent with local drainage patterns.
- B. The average grade will be less than 1%.
- C. No turnouts are planned.
- D. No culverts, cattleguard, gates, low water crossings or fence cuts are necessary.



- E. Surfacing material will consist of native caliche. Caliche will be obtained from the actual well site if available. If not available onsite, caliche will be hauled from the nearest BLM caliche pit.

**3. Location of Existing Well:**

Exhibit #5 shows all existing wells within a one-mile radius of this well.

As shown on this plat there are numerous wells producing from the San Andres and Yeso formations.

**4. Location of Existing and/or Proposed Facilities:**

- A. COG Operating LLC does operate a production facility on this lease.
- B. If the well is productive, contemplated facilities will be as follows:
  - 1) Production will be sent to the Skelly 942 Federal tank battery located well location @ 1210 FNL & 2195 FEL, Section 22, T17S, R31E, UL B. The facility location is shown in Exhibit #5.
  - 2) The tank battery and facilities including all flow lines and piping will be installed according to API specifications.
  - 3) Any additional caliche will be obtained from the actual well site. If caliche does not exist or is not plentiful from the well site, the caliche will be hauled from a BLM approved caliche pit. Any additional construction materials will be purchased from contractors.
  - 4) Proposed flow lines, will follow an archaeologically approved route to the Skelly 942 Federal tank battery located well location @ 1210 FNL & 2195 FEL, Section 22, T17S, R31E, UL B. The flowline will be SDR 7 3" poly line laid on the surface and will be approximately 1.25 miles in length with max pressure 100 psi. Flowlines will be no more than 11' from the paralleling road. The facility location is shown in Exhibit #5.
  - 5) It will be necessary to run electric power if this well is productive. Power will be provided by CVE and they will submit a separate plan and ROW for service to the well location.
  - 6) If the well is productive, rehabilitation plans will include the following:
    - a) The original topsoil from the well site will be returned to the location, and the site will be re-contoured as close as possible to the original site.

**5. Location and Type of Water Supply:**

The well will be drilled with combination brine and fresh water mud system as outlined in the drilling program. The water will be obtained from commercial water stations in the area and hauled to location by transport truck over the existing and proposed access roads shown in Exhibit #2. If a commercial fresh water source is nearby, fast line may be laid along existing road ROW's and fresh water pumped to the well. No water well will be drilled on the location.

**6. Source of Construction Materials and Location "Turn-Over" Procedure:**

Obtaining caliche: The primary way of obtaining caliche to build locations and roads will be by "turning over" the location. This means, caliche will be obtained from the actual well sight. A caliche permit will be obtained from BLM prior to pushing up any caliche. 2400 cu. Yards is max amount of caliche needed for pad and roads. Amount will vary for each pad. The procedure below has been approved by BLM personnel:

- A. The top 6 inches of topsoil is pushed off and stockpiled along the side of the location.**
- B. An approximate 120' X 120' area is used within the proposed well site to remove caliche.**
- C. Subsoil is removed and piled along side the 120' by 120' area within the pad site.**
- D. When caliche is found, material will be stock piled within the pad site to build the location and road.**
- E. Then subsoil is pushed back in the hole and caliche is spread accordingly across entire location and road.**
- F. Once well is drilled, the stock piled top soil will be used for interim reclamation and spread along areas where caliche is picked up and the location size is reduced. Neither caliche or subsoil will be stock piled outside of the well pad. Topsoil will be stockpiled along the edge of the pad as depicted in attached plat.**

In the event that no caliche is found onsite, caliche will be hauled in from a BLM approved caliche pit.

**7. Methods of Handling Water Disposal:**

- A. The well will be drilled utilizing a closed loop mud system. Drill cuttings will be held in roll-off style mud boxes and taken to an NMOCD approved disposal site.**
- B. Drilling fluids will be contained in steel mud pits.**

- C. Water produced from the well during completion will be held temporarily in steel tanks and then taken to an NMOCD approved commercial disposal facility.
- D. Garbage and trash produced during drilling or completion operations will be collected in a trash bin and hauled to an approved landfill. No toxic waste or hazardous chemicals will be produced by this operation.
- E. After the rig is moved out and the well is either completed or abandoned, all waste materials will be cleaned up within 30 days. In the event of a dry hole only a dry hole marker will remain.

**8. Ancillary Facilities:**

No airstrip, campsite or other facilities will be built as a result of the operation on this well.

**9. Well Site Layout:**

- A. The drill pad layout, with elevations staked by John West Engineering, is shown in Exhibit #4. Dimensions of the pad and pits are shown on Exhibit #6. V door direction is West. Topsoil, if available, will be stockpiled per BLM specifications. Because the pad is almost level no major cuts will be required.
- B. Exhibit #6 also shows the proposed orientation of closed loop system and access road. No permanent living facilities are planned, but a temporary foreman/toolpusher's trailer will be on location during the drilling operations.

**10. Plans for Restoration of the Surface:**

- A. Interim Reclamation will take place after the well has been completed. The pad will be downsized by reclaiming the areas not needed for production operations. The portions of the pad that are not needed for production operations will be recontoured to its original state as much as possible. The caliche that is removed will be reused to either build another pad site or for road repairs within the lease. The stockpiled topsoil will then be spread out reclaimed area and reseeded with a BLM approved seed mixture. In the event that the well must be worked over or maintained, it may be necessary to drive, park, and/or operate machinery on reclaimed land. This area will be repaired or reclaimed after work is complete. Pad will be approx. 200'X250" when reclaimed.

- B. Final Reclamation: Upon plugging and abandoning the well, All caliche for well pad and lease road will be removed and surface will be recountoured to reflect its surroundings as much as possible. Caliche will be recycled for road repair or reused for another well pad within the lease. If any topsoil remains, it will be spread out and the area will be re-seeded with a BLM approved mixture and revegetated as per BLM orders.

**11. Surface Ownership:**

- A. The surface is owned by the U.S. Government and is administered by the Bureau of Land Management. The surface is multiple uses with the primary uses of the region for grazing of livestock and the production of oil and gas.
- B. The surface tenant for this site is Charles Martin, P.O. Box 706, Artesia NM 88211.
- C. The proposed road routes and surface location will be restored as directed by the BLM

**12. Other Information:**

- A. The area around the well site is grassland and the topsoil is sandy. The vegetation is moderately sparse with native prairie grasses, some mesquite and shinnery oak. No wildlife was observed but it is likely that mule deer, rabbits, coyotes and rodents traverse the area.
- B. There is no permanent or live water in the immediate area.
- C. There are no dwellings within 2 miles of this location.
- D. If needed, a Cultural Resources Examination is being prepared by Southern New Mexico Archaeological Services, Inc. P.O. Box 1, Bent New Mexico, 88314, phone # 505-671-4797 and the results will be forwarded to your office in the near future. Otherwise, **COG will be participating in the Permian Basin MOA Program.**

Surface Use Plan  
COG Operating, LLC  
Skelly Unit 739  
SHL 1215' FSL & 330' FWL BHL 990' FSL & 330' FWL  
Section 22, T-17-S, R-31-E, UL M  
Eddy County, New Mexico

**13. Bond Coverage:**

Bond Coverage is Nationwide Bond # 000215

**14. Lessee's and Operator's Representative:**

The COG Operating LLC representative responsible for assuring compliance with the surface use plan is as follows:

John Coffman,

Drilling Superintendent

COG Operating LLC

550 W. Texas, Suite 1300

Midland, TX 79701

Phone (432) 683-7443 (office)

(432) 631-9762 (cell)

Erick Nelson.

Division Operations Manager

COG Operating LLC

550 W. Texas, Suite 1300

Midland, TX 79701

Phone (505) 746-2210 (office)

(432) 238-7591 (cell)

Surface Use Plan  
COG Operating, LLC  
Skelly Unit 739  
SHL 1215' FSL & 330' FWL BHL 990' FSL & 330' FWL  
Section 22, T-17-S, R-31-E, UL M  
Eddy County, New Mexico

I hereby certify that I, or persons under my direct supervision, have inspected the drill site and access road proposed herein; that I am familiar with the conditions that presently exist; that I have full knowledge of State and Federal laws applicable to this operation; that the statements made in this APD package are, to the best of my knowledge, true and correct; and that the work associated with the operations proposed herein will be performed in conformity with this APD package and the terms and conditions under which it is approved. I also certify that I, or COG Operating, LLC, am responsible for the operations conducted under this application. These statements are subject to the provisions of 18 U.S.C. 1001 for the filing of false statements. Executed this 7th day of September, 2010.

Signed: Carl Bird

Printed Name: Carl Bird

Position: Drilling Engineer

Address: 550 W. Texas, Suite 1300, Midland, Texas 79701

Telephone: (432) 683-7443

Field Representative (if not above signatory): Same

E-mail: cbird@conchoresources.com

Surface Use Plan  
COG Operating, LLC  
Skelly Unit 739  
SHL 1215' FSL & 330' FWL BHL 990' FSL & 330' FWL  
Section 22, T-17-S, R-31-E, UL M  
Eddy County, New Mexico

**Exhibits:**

- |                    |   |
|--------------------|---|
| <b>Exhibit #1</b>  | <b>Wellsite and Elevation Plat</b>                            |
|                    | <b>Form C-102 Well location and acreage dedication plat</b>   |
| <b>Exhibit #2</b>  | <b>Topographic Map (West)</b>                                 |
| <b>Exhibit #3</b>  | <b>Vicinity Map and area roads</b>                            |
| <b>Exhibit #4</b>  | <b>Elevation Plat (West)</b>                                  |
| <b>Exhibit #5</b>  | <b>Topographic extract showing wells, roads and flowlines</b> |
| <b>Exhibit #6</b>  | <b>Pad Layout and orientation</b>                             |
| <b>Exhibit #7</b>  | <b>H2S Signage</b>  |
| <b>Exhibit #8</b>  | <b>H2S Equipment location</b>                                 |
| <b>Exhibit #9</b>  | <b>BOP and Choke diagrams</b>                                 |
| <b>Exhibit #10</b> | <b>Form C-144 NMOCD pit permit application</b>                |

3816.5'

600'

3823.5'

150' NORTH  
OFFSET  
3818.8'

SKELLY UNIT #116

150' WEST  
OFFSET  
3816.2'

SKELLY UNIT #739

ELEV. 3817.5'  
LAT.=32.816038° N  
LONG.=103.864467° W

150' EAST  
OFFSET  
3820.4'

150' SOUTH  
OFFSET  
3817.6'

LEASE ROAD

R/W FENCE LINE

U.S. HWY. #82

R/W FENCE LINE

600'

3815.2'

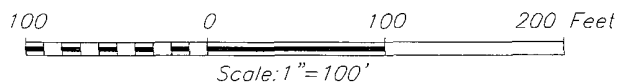
3821.8'

NORTH

FROM THE INTERSECTION OF U.S. HWY. #82 AND CO.  
RD. #223 (SWEET GUM RD.) GO NORTH-NORTHWEST,  
ON CO. RD. #223 APPROX. 0.4 MILES. TURN RIGHT  
AND GO EAST APPROX. 0.6 MILES. TURN RIGHT AND  
GO SOUTH APPROX. 0.1 MILE. TURN RIGHT AND GO  
WEST-SOUTHWEST APPROX. 0.2 MILES TO THE  
SKELLY UNIT #116 WELL PAD. THE LOCATION STAKE  
IS APPROX. 90 FEET SOUTHEAST OF WELL PAD.



PROVIDING SURVEYING SERVICES  
SINCE 1946  
**JOHN WEST SURVEYING COMPANY**  
412 N. DAL PASO  
HOBBS, N.M. 88240  
(575) 393-3117

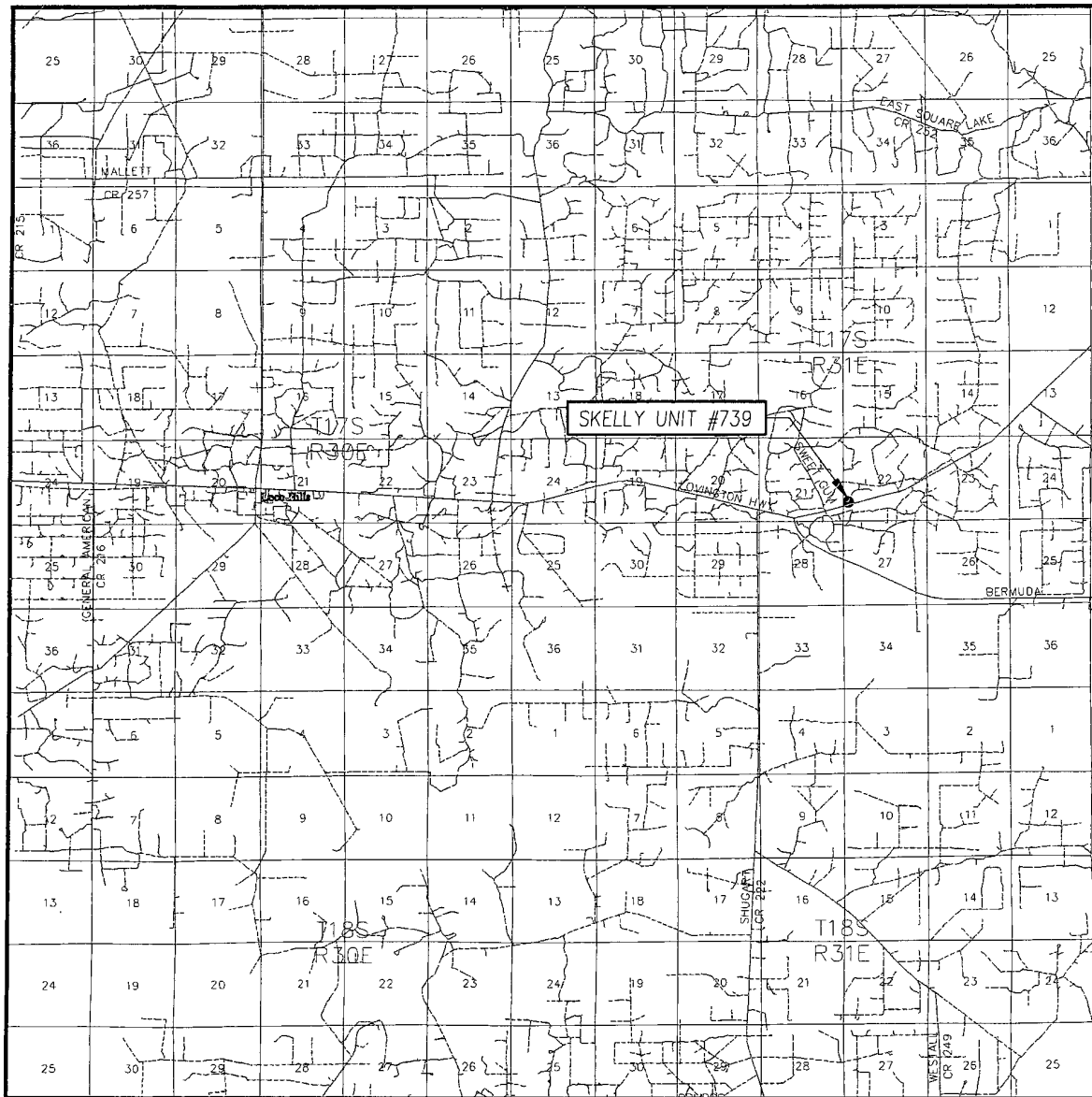


SKELLY UNIT #739 WELL  
LOCATED 1215 FEET FROM THE SOUTH LINE  
AND 330 FEET FROM THE WEST LINE OF SECTION 22,  
TOWNSHIP 17 SOUTH, RANGE 31 EAST, N.M.P.M.,  
EDDY COUNTY, NEW MEXICO.

Survey Date: 8/19/10		Sheet 1 of 1 Sheets	
W.O. Number: 10.11.1040		Dr By: LA	Rev 1:N/A
Date: 8/27/10		10111040	Scale: 1"=100'




# VICINITY MAP



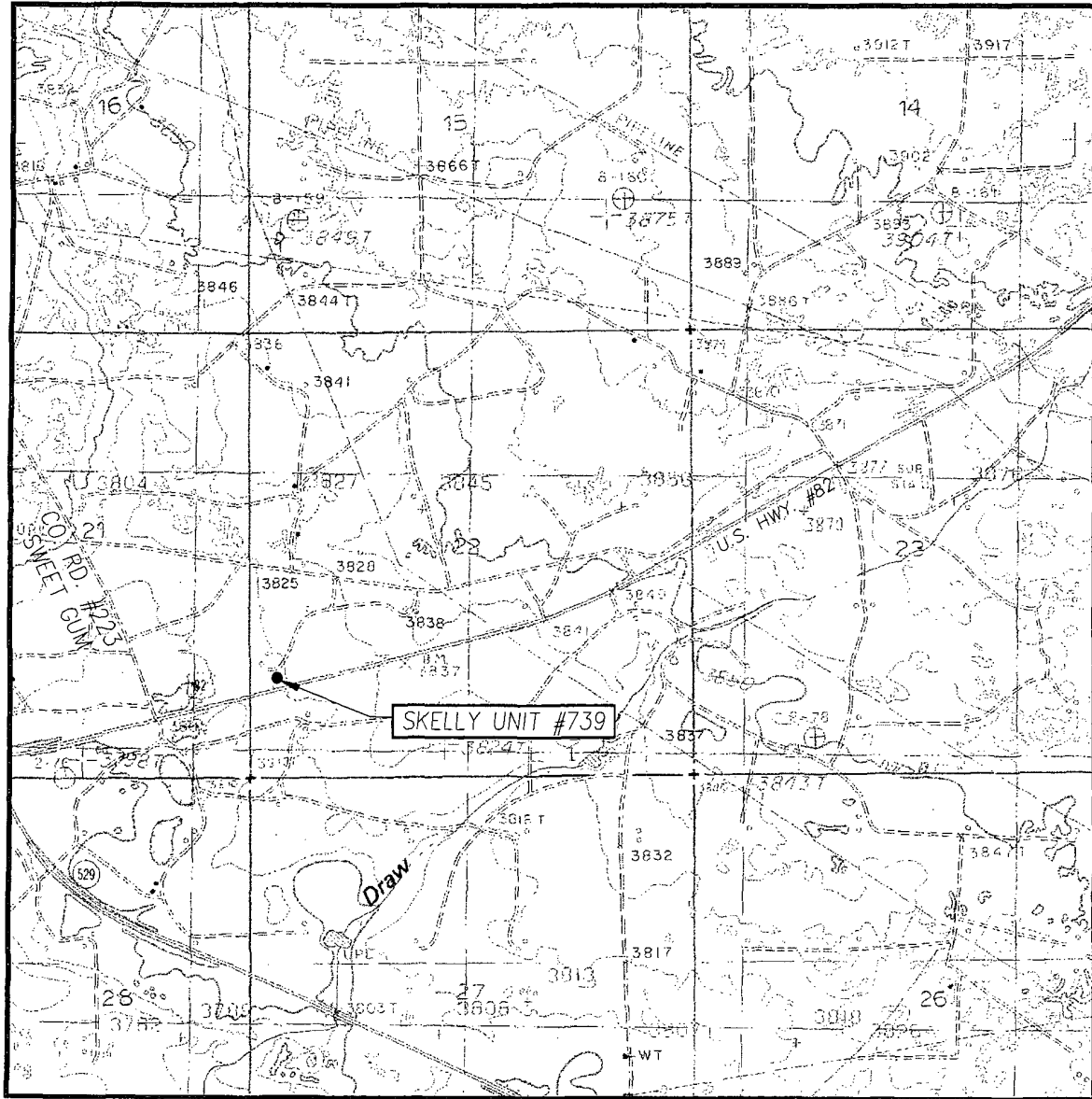
SCALE: 1" = 2 MILES

SEC. 22 TWP. 17-S RGE. 31-E  
 SURVEY N.M.P.M.  
 COUNTY EDDY STATE NEW MEXICO  
 DESCRIPTION 1215' FSL & 330' FWL  
 ELEVATION 3818'  
 OPERATOR COG OPERATING, LLC  
 LEASE SKELLY UNIT



PROVIDING SURVEYING SERVICES  
 SINCE 1946  
**JOHN WEST SURVEYING COMPANY**  
 412 N. DAL PASO  
 HOBBS, N.M. 88240  
 (575) 393-3117

# LOCATION VERIFICATION MAP



SCALE: 1" = 2000'

CONTOUR INTERVAL:  
MALJAMAR, N.M. - 10'

SEC. 22 TWP. 17-S RGE. 31-E

SURVEY N.M.P.M.

COUNTY EDDY STATE NEW MEXICO

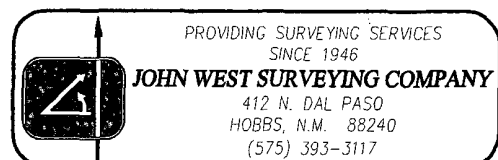
DESCRIPTION 1215' FSL & 330' FWL

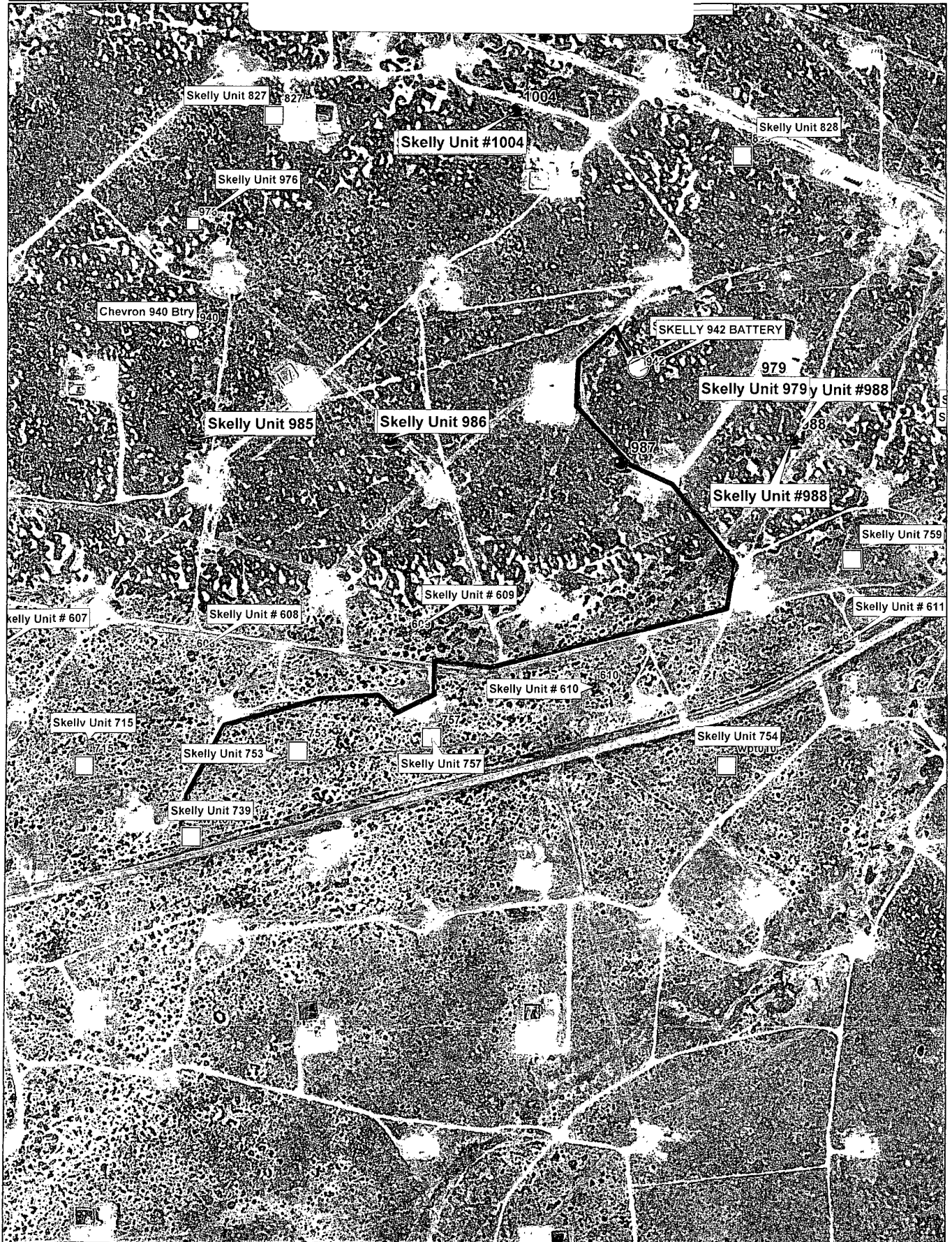
ELEVATION 3818'

OPERATOR COG OPERATING, LLC

LEASE SKELLY UNIT

U.S.G.S. TOPOGRAPHIC MAP  
MALJAMAR, N.M.





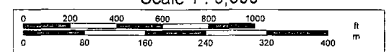
Data use subject to license.

© DeLorme. XMap® 7.

www.delorme.com



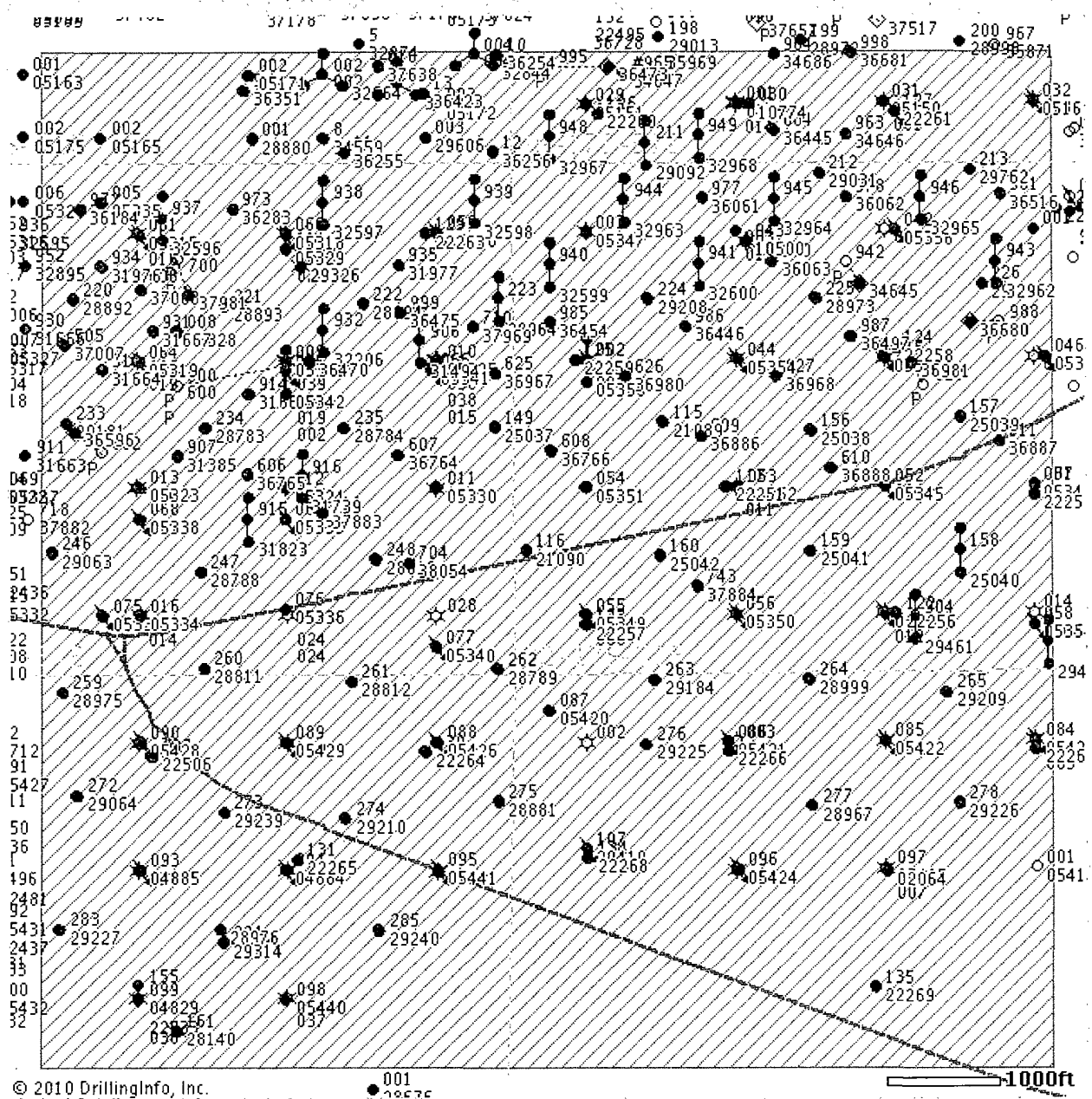
Scale 1 : 9,600



1" = 800.0 ft

Data Zoom 14-4

[PDF](#) [Save](#)  
[Map](#) [Image](#)



## 1 Mile Radius Around Skelly Unit 739

API#	Operator	County	Legal	Lease	Well#	Date Issued	Permitted Depth	Permit TVD	Images	Doc	Total Depth	Well Type	Well Status	Target Formation
30-015-38054	COG OPERATING LLC	EDDY	S:21, T:17S, R:31E	SKELLY UNIT	704	7/23/2010	6,900		No	link	6,900	PO	Active	
30-015-37981	COG OPERATING LLC	EDDY	S:21, T:17S, R:31E	SKELLY UNIT	700	7/1/2010	6,900		No	link	6,900	PO	Active	
30-015-37969	COG OPERATING LLC	EDDY	S:21, T:17S, R:31E	SKELLY UNIT	710	6/16/2010	6,600		Yes	link	6,600	PO	Active	
30-015-37883	COG OPERATING LLC	EDDY	S:21, T:17S, R:31E	SKELLY UNIT	719	5/27/2010	6,800		Yes	link	6,800	PO	Active Permit	
30-015-37884	COG OPERATING LLC	EDDY	S:22, T:17S, R:31E	SKELLY UNIT	743	5/27/2010	7,050		Yes	link	7,050	PO	Active Permit	
30-015-37638	COG OPERATING LLC	EDDY	S:16, T:17S, R:31E	WILLOW STATE	016	3/10/2010	6,700		Yes	link	6,700	PO	Active Permit	YESO FORMATION
30-015-36981	COG OPERATING LLC	EDDY	S:22, T:17S, R:31E	SKELLY UNIT	628	2/27/2009	6,806	6,800	Yes	link	6,846	O	Active Permit	
30-015-36968	COG OPERATING LLC	EDDY	S:22, T:17S, R:31E	SKELLY UNIT	627	2/25/2009	6,800		Yes	link	6,815	O	Active Permit	
30-015-36967	COG OPERATING LLC	EDDY	S:21, T:17S, R:31E	SKELLY UNIT	625	2/25/2009	6,800		Yes	link	6,804	O	Active Permit	
30-015-37007	FOREST OIL CORPORATION	EDDY	S:21, T:17S, R:31E	SKELLY UNIT	505	2/25/2009	4,600		Yes	link	4,600	PO	Active Permit	
30-015-36980	COG OPERATING LLC	EDDY	S:22, T:17S, R:31E	SKELLY UNIT	626	2/24/2009	6,800		Yes	link	6,840	O	Active Permit	
30-015-37008	FOREST OIL CORPORATION	EDDY	S:21, T:17S, R:31E	SKELLY UNIT	503	2/24/2009	4,600		Yes	link	3,900	O	Active Permit	
30-015-36764	COG OPERATING LLC	EDDY	S:21, T:17S, R:31E	SKELLY UNIT	607	11/4/2008	6,400		Yes	link	6,811	O	Active Permit	
30-015-36765	COG OPERATING LLC	EDDY	S:21, T:17S, R:31E	SKELLY UNIT	606	11/4/2008	6,400		Yes	link	6,813	O	Active Permit	
30-015-36766	COG OPERATING LLC	EDDY	S:22, T:17S, R:31E	SKELLY UNIT	608	11/4/2008	6,500		Yes	link	6,723	O	Active Permit	
30-015-36886	COG OPERATING LLC	EDDY	S:22, T:17S, R:31E	SKELLY UNIT	609	11/4/2008	6,500		Yes	link	6,802	O	Active Permit	
30-015-36887	COG OPERATING LLC	EDDY	S:22, T:17S, R:31E	SKELLY UNIT	611	11/4/2008	6,500		Yes	link	6,890	O	Active Permit	
30-015-36888	COG OPERATING LLC	EDDY	S:22, T:17S, R:31E	SKELLY UNIT	610	11/4/2008	6,500		Yes	link	6,935	O	Active Permit	
30-015-36516	COG OPERATING LLC AGENT or COG OPERATING LLC	EDDY	S:22, T:17S, R:31E	SKELLY UNIT	981	8/4/2008	6,500		Yes	link	6,505	O	Active Permit	
30-015-36470	COG OPERATING LLC AGENT or COG OPERATING LLC	EDDY	S:21, T:17S, R:31E	SKELLY UNIT	600	7/31/2008	6,550		Yes	link	6,568	O	Active Permit	
30-015-36473	COG OPERATING LLC	EDDY	S:15, T:17S, R:31E	SKELLY UNIT	995	7/31/2008	6,450		Yes	link	6,450	PO	Active Permit	
30-015-36681	COG OPERATING LLC	EDDY	S:15, T:17S, R:31E	SKELLY UNIT	998	7/31/2008	6,600		Yes	link	6,593	O	Active Permit	
30-015-36680	COG OPERATING LLC	EDDY	S:22, T:17S, R:31E	SKELLY UNIT	988	7/31/2008	6,600		Yes	link	6,716	O	Active Permit	
30-015-36454	COG OPERATING LLC	EDDY	S:22, T:17S, R:31E	SKELLY UNIT	985	7/25/2008	6,600		Yes	link	6,530	O	Active Permit	
	COG			SKELLY										

30-015-36446	OPERATING LLC	EDDY	S:22, T:17S, R:31E	UNIT	986	7/25/2008	6,600		Yes	link	6,625	O	Active Permit	
30-015-36497	COG OPERATING LLC	EDDY	S:22, T:17S, R:31E	SKELLY UNIT	987	7/24/2008	6,600		Yes	link	6,600	PO	Active Permit	
30-015-36475	COG OPERATING LLC	EDDY	S:21, T:17S, R:31E	SKELLY UNIT	999	7/23/2008	6,450		Yes	link	6,500	O	Active Permit	
30-015-36596	COG OPERATING LLC	EDDY	S:21, T:17S, R:31E	SKELLY UNIT	602	7/22/2008	6,700		Yes	link	6,677	O	Active Permit	
30-015-36423	FOREST OIL CORPORATION	EDDY	S:16, T:17S, R:31E	STATE B	13	7/18/2008	4,100		Yes	link	4,100	PI	Active Permit	GRAYBURG
30-015-36445	COG OPERATING LLC	EDDY	S:15, T:17S, R:31E	SKELLY UNIT	604	7/18/2008	6,450		Yes	link	6,512	O	Active Permit	
30-015-36351	COG OPERATING LLC	EDDY	S:16, T:17S, R:31E	WILLOW STATE	009	6/4/2008			Yes	link	6,498	O	Active Permit	YESO FORMATION
30-015-36256	FOREST OIL CORPORATION	EDDY	S:16, T:17S, R:31E	FOC B STATE	012	4/7/2008	4,100		Yes	link	4,030	O	Active Permit	GRAYBURG
30-015-36254	FOREST OIL CORPORATION	EDDY	S:16, T:17S, R:31E	FOC B STATE	10	4/7/2008	4,100		Yes	link	4,075	O	Active Permit	GRAYBURG
30-015-36255	FOREST OIL CORPORATION	EDDY	S:16, T:17S, R:31E	FOC B STATE	011	4/7/2008	4,100		Yes	link	4,040	O	Active Permit	GRAYBURG
30-015-36283	CHEVRON U S A INC or CHEVRON USA INC	EDDY	S:21, T:17S, R:31E	SKELLY UNIT	973	4/1/2008	6,400		Yes	link	6,407	O	Active Permit	
30-015-36184	CHEVRON USA, INC. or CHEVRON USA INC	EDDY	S:21, T:17S, R:31E	SKELLY UNIT	972	2/22/2008	6,400		Yes	link	6,415	O	Active Permit	
30-015-36061	CHEVRON USA, INC. or CHEVRON USA INC	EDDY	S:22, T:17S, R:31E	SKELLY UNIT	977	1/17/2008	6,500		Yes	link	6,510	O	Active Permit	
30-015-36062	CHEVRON USA, INC. or CHEVRON USA INC	EDDY	S:22, T:17S, R:31E	SKELLY UNIT	978	1/17/2008	6,500		Yes	link	6,500	PO	Active Permit	
30-015-36063	CHEVRON USA, INC. or CHEVRON USA INC	EDDY	S:22, T:17S, R:31E	SKELLY UNIT	980	1/17/2008	6,500		Yes	link	6,500	PO	Active Permit	
30-015-34645	CHEVRON USA, INC.	EDDY	S:22, T:17S, R:31E	SKELLY UNIT	942	2/22/2006	5,500		No	link	6,500	O	Active Permit	
30-015-34647	CHEVRON USA, INC.	EDDY	S:15, T:17S, R:31E	SKELLY UNIT	965	2/22/2006	3,849		No	link	5,370	O	Active Permit	
30-015-34686	CHEVRON U S A INC	EDDY	S:15, T:17S, R:31E	SKELLY UNIT	964	2/22/2006	5,500		No	link	5,410	PO	Active Permit	FREN PADDOCK
30-015-34646	CHEVRON USA, INC.	EDDY	S:15, T:17S, R:31E	SKELLY UNIT	963	2/21/2006	5,500		No	link	5,500	PO	Active Permit	
30-015-34559	MACK ENERGY CORPORATION or MACK ENERGY CORP	EDDY	S:16, T:17S, R:31E	WILLOW STATE	008	1/30/2006	6,800		No	link	6,310	O	Active Permit	PADDOCK
30-015-32962	CHEVRON USA, INC. or CHEVRON U S A INC	EDDY	S:22, T:17S, R:31E	SKELLY UNIT	943	11/30/2004			No	link	5,410	O	Active	FREN PADDOCK 26770
30-015-32965	CHEVRON USA, INC. or CHEVRON U S A INC	EDDY	S:22, T:17S, R:31E	SKELLY UNIT	946	11/30/2004			No	link	5,430	O	Active	FREN PADDOCK 26770



30-015-32968	CHEVRON USA, INC. or CHEVRON U S A INC	EDDY	S:15, T:17S, R:31E	SKELLY UNIT	949	11/30/2004			No	link	5,350	O	Active	FREN PADDOCK
30-015-32967	CHEVRON USA, INC. or CHEVRON U S A INC	EDDY	S:15, T:17S, R:31E	SKELLY UNIT	948	11/30/2004			No	link	5,350	O	Active	FREN PADDOCK 26770
30-015-33089	MARBOB ENERGY CORPORATION or MARBOB ENERGY CORP	EDDY	S:16, T:17S, R:31E	OXY SPUMONI STATE	001	4/8/2004	9,850		Yes	link	12,200	G	Active	PENN
30-015-33089	MARBOB ENERGY CORP	EDDY	S:16, T:17S, R:31E	OXY SPUMONI STATE	001	3/31/2004			No	link	12,200	G	Active	FREN CISCO CANYON
30-015-33089	OXY USA WTP LIMITED PARTNERSHIP	EDDY	S:16, T:17S, R:31E	OXY SPUMONI STATE	001	11/1/2003	12,000		No	link	12,200	G	Active	MORROW
30-015-32962	CHEVRON USA, INC. or CHEVRON USA INC	EDDY	S:22, T:17S, R:31E	SKELLY UNIT	943	8/21/2003	5,500		No	link	5,410	O	Active	FREN PADDOCK
30-015-32963	CHEVRON USA, INC. or CHEVRON USA INC	EDDY	S:22, T:17S, R:31E	SKELLY UNIT	944	8/21/2003	5,500		No	link	5,450	O	Active	FREN PADDOCK
30-015-32964	CHEVRON USA, INC. or CHEVRON USA INC	EDDY	S:22, T:17S, R:31E	SKELLY UNIT	945	8/21/2003	5,500		No	link	5,483	O	Active	FREN PADDOCK
30-015-32965	CHEVRON USA, INC. or CHEVRON USA INC	EDDY	S:22, T:17S, R:31E	SKELLY UNIT	946	8/21/2003	5,500		No	link	5,430	O	Active	FREN PADDOCK
30-015-32967	CHEVRON USA, INC. or CHEVRON USA INC	EDDY	S:15, T:17S, R:31E	SKELLY UNIT	948	8/21/2003	5,500		No	link	5,350	O	Active	FREN PADDOCK
30-015-32968	CHEVRON USA, INC. or CHEVRON USA INC	EDDY	S:15, T:17S, R:31E	SKELLY UNIT	949	8/21/2003	5,500		No	link	5,350	O	Active	FREN PADDOCK
30-015-32963	CHEVRON USA, INC. or CHEVRON U S A INC	EDDY	S:22, T:17S, R:31E	SKELLY UNIT	944	7/31/2003			No	link	5,450	O	Active	FREN PADDOCK
30-015-32964	CHEVRON USA, INC. or CHEVRON U S A INC	EDDY	S:22, T:17S, R:31E	SKELLY UNIT	945	7/31/2003			No	link	5,483	O	Active	FREN PADDOCK
30-015-32844	MACK ENERGY CORPORATION or MACK ENERGY CORP	EDDY	S:16, T:17S, R:31E	WILLOW STATE	4	6/15/2003	6,400		No	link	5,405	O	Active	Paddock
30-015-32844	MACK ENERGY CORP	EDDY	S:16, T:17S, R:31E	WILLOW STATE	004	5/31/2003			No	link	5,405	O	Active	Paddock
	MACK ENERGY CORPORATION or MACK			WILLOW										

30-015-32664	ENERGY CORP	EDDY	S:16, T:17S, R:31E	STATE	002	3/3/2003	6,400		No	link	6,505	O	Active	Paddock
30-015-32664	MACK ENERGY CORP	EDDY	S:16, T:17S, R:31E	WILLOW STATE	002	2/28/2003			No	link	6,505	O	Active	Paddock
30-015-32596	CHEVRON USA, INC. or CHEVRON USA INC	EDDY	S:21, T:17S, R:31E	SKELLY UNIT	937	1/16/2003	5,500		No	link	5,305	O	Active	FREN PADDOCK
30-015-32597	CHEVRON USA, INC. or CHEVRON USA INC	EDDY	S:21, T:17S, R:31E	SKELLY UNIT	938	1/16/2003	5,500		No	link	5,410	O	Active	FREN PADDOCK
30-015-32598	CHEVRON USA, INC. or CHEVRON USA INC	EDDY	S:21, T:17S, R:31E	SKELLY UNIT	939	1/16/2003	5,500		No	link	5,360	O	Active	FREN PADDOCK
30-015-32599	CHEVRON USA, INC. or CHEVRON USA INC	EDDY	S:22, T:17S, R:31E	SKELLY UNIT	940	1/16/2003	5,500		No	link	5,427	O	Active	FREN PADDOCK
30-015-32600	CHEVRON USA, INC. or CHEVRON USA INC	EDDY	S:22, T:17S, R:31E	SKELLY UNIT	941	1/16/2003	5,500		No	link	5,478	O	Active	FREN PADDOCK
30-015-05171	WISER OIL CO (THE)	EDDY	S:16, T:17S, R:31E	STATE B	002	1/1/2003	0		No	link	0	O	Temporarily Abandoned	
30-015-05172	WISER OIL CO (THE)	EDDY	S:16, T:17S, R:31E	STATE B	003	1/1/2003	0		No	link	0	O	Shut-in	
30-015-32598	CHEVRON USA, INC. or CHEVRON U S A INC	EDDY	S:21, T:17S, R:31E	SKELLY UNIT	939	12/31/2002			No	link	5,360	O	Active	FREN PADDOCK
30-015-32596	CHEVRON USA, INC. or CHEVRON U S A INC	EDDY	S:21, T:17S, R:31E	SKELLY UNIT	937	12/31/2002			No	link	5,305	O	Active	FREN PADDOCK
30-015-32597	CHEVRON USA, INC. or CHEVRON U S A INC	EDDY	S:21, T:17S, R:31E	SKELLY UNIT	938	12/31/2002			No	link	5,410	O	Active	FREN PADDOCK
30-015-32599	CHEVRON USA, INC. or CHEVRON U S A INC	EDDY	S:22, T:17S, R:31E	SKELLY UNIT	940	12/31/2002			No	link	5,427	O	Active	FREN PADDOCK
30-015-32600	CHEVRON USA, INC. or CHEVRON U S A INC	EDDY	S:22, T:17S, R:31E	SKELLY UNIT	941	12/31/2002			No	link	5,478	O	Active	FREN PADDOCK
30-015-31823	CHEVRON USA, INC. or CHEVRON U S A INC	EDDY	S:21, T:17S, R:31E	SKELLY UNIT	915	10/31/2002			No	link	5,500	PO	Active Permit	FREN PADDOCK
30-015-31494	CHEVRON USA, INC. or CHEVRON USA INC	EDDY	S:21, T:17S, R:31E	SKELLY UNIT	906	5/1/2002			No	link	5,700	O	Active	
30-015-31739	CHEVRON USA, INC. or CHEVRON USA INC	EDDY	S:21, T:17S, R:31E	SKELLY UNIT	916	5/1/2002			No	link	5,500	O	Active	
	CHEVRON USA,													



30-015-29326	INC. or CHEVRON U S A INC	EDDY	S:21, T:17S, R:31E	SKELLY UNIT	901	5/1/2002			No	link	9,200	G	Pumping	MORROW
30-015-29419	CHEVRON USA, INC. or CHEVRON U S A INC	EDDY	S:22, T:17S, R:31E	SKELLY UNIT	903	5/1/2002			No	link	8,000	O	Pumping	ABO
30-015-29461	CHEVRON USA, INC. or CHEVRON U S A INC	EDDY	S:22, T:17S, R:31E	SKELLY UNIT	904	5/1/2002			No	link	9,200	O	Shut-in	ABO
30-015-31385	CHEVRON USA, INC. or CHEVRON U S A INC	EDDY	S:21, T:17S, R:31E	SKELLY UNIT	907	5/1/2002			No	link	5,400	O	Pumping	FREN PADDOCK
30-015-31664	CHEVRON USA, INC. or CHEVRON U S A INC	EDDY	S:21, T:17S, R:31E	SKELLY UNIT	912	5/1/2002			No	link	5,438	U	Pumping	FREN PADDOCK
30-015-31665	CHEVRON USA, INC. or CHEVRON U S A INC	EDDY	S:21, T:17S, R:31E	SKELLY UNIT	914	5/1/2002			No	link	5,400	U	Pumping	FREN PADDOCK
30-015-31667	CHEVRON USA, INC. or CHEVRON U S A INC	EDDY	S:21, T:17S, R:31E	SKELLY UNIT	931	5/1/2002			No	link	5,370	O	Pumping	FREN PADDOCK
30-015-31976	CHEVRON USA, INC. or CHEVRON U S A INC	EDDY	S:21, T:17S, R:31E	SKELLY UNIT	934	5/1/2002			No	link	5,255	O	Active	FREN PADDOCK
30-015-31977	CHEVRON USA, INC. or CHEVRON U S A INC	EDDY	S:21, T:17S, R:31E	SKELLY UNIT	935	5/1/2002			No	link	5,446	O	Active	FREN PADDOCK
30-015-32206	CHEVRON USA, INC. or CHEVRON U S A INC	EDDY	S:21, T:17S, R:31E	SKELLY UNIT	932	5/1/2002			No	link		O	Active	FREN PADDOCK
30-015-29419	CHEVRON USA, INC. or CHEVRON U S A INC	EDDY	S:22, T:17S, R:31E	SKELLY UNIT	903	4/30/2002			No	link	8,000	O	Pumping	ABO P&A 11-15-04
30-015-29461	CHEVRON USA, INC. or CHEVRON U S A INC	EDDY	S:22, T:17S, R:31E	SKELLY UNIT	904	4/30/2002			No	link	9,200	O	Shut-in	ABO P&A 110404
30-015-31494	CHEVRON USA, INC. or CHEVRON U S A INC	EDDY	S:21, T:17S, R:31E	SKELLY UNIT	906	4/30/2002			No	link	5,700	O	Active	FREN PADDOCK
30-015-31739	CHEVRON USA, INC. or CHEVRON U S A INC	EDDY	S:21, T:17S, R:31E	SKELLY UNIT	916	4/30/2002			No	link	5,500	O	Active	FREN PADDOCK
	TEXACO EXPLORATION & PRODUCTION INC or TEXACO EXPLORATION & PRODUCTION			SKELLY										

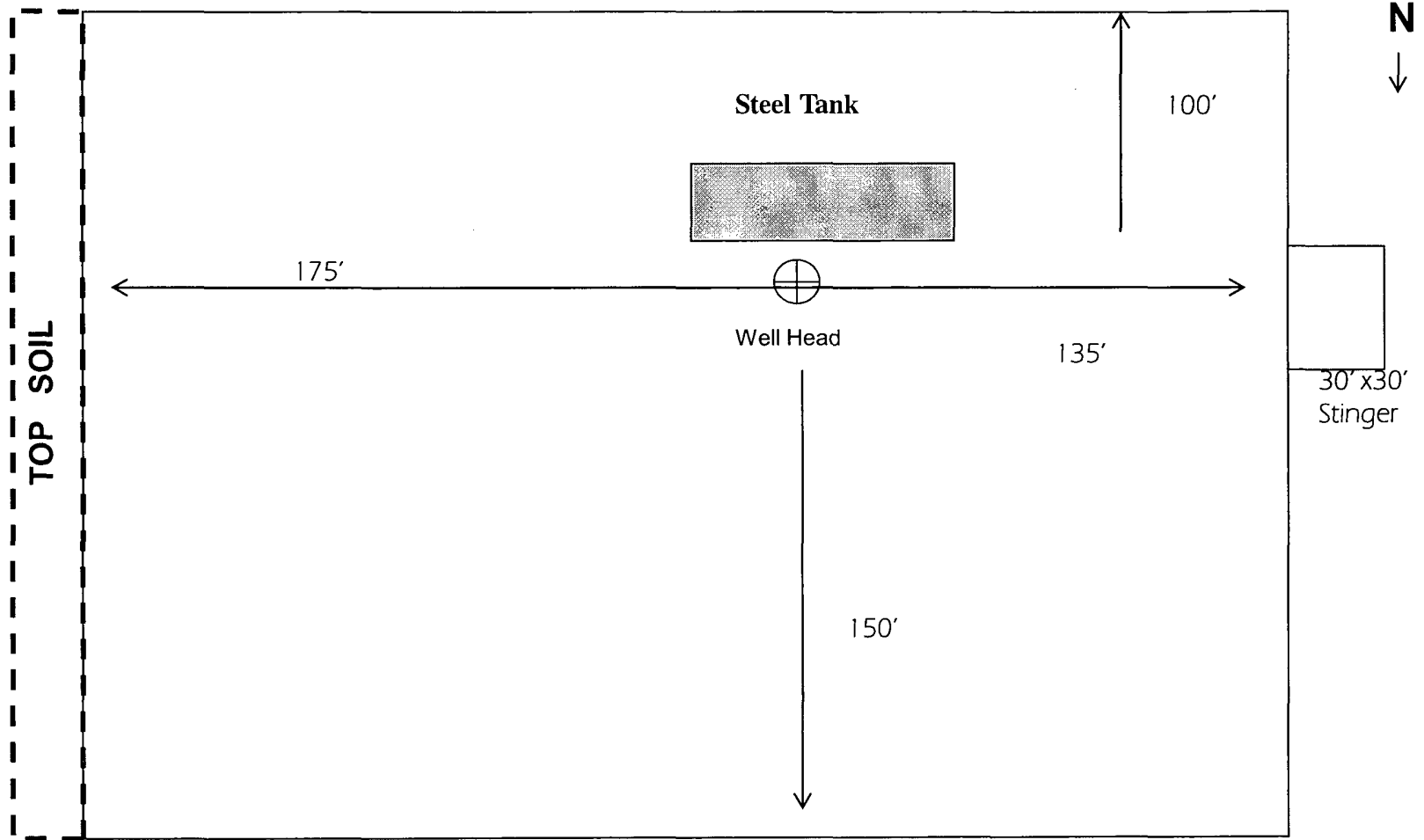
30-015-32206	INC.	EDDY	S:21, T:17S, R:31E	UNIT	932	2/12/2002		No	link		O	Active	FREN PADDOCK
30-015-29390	MACK ENERGY CORP	EDDY	S:16, T:17S, R:31E	WILLOW STATE	002	9/5/2001		No	link		PO	Unknown	PADDOCK
30-015-29568	MACK ENERGY CORP	EDDY	S:16, T:17S, R:31E	WILLOW STATE	004	9/5/2001		No	link		O	Active	PADDOCK
30-015-31823	CHEVRON USA, INC. or CHEVRON USA INC	EDDY	S:21, T:17S, R:31E	SKELLY UNIT	915	6/4/2001	5,500	No	link	5,500	PO	Active Permit	PADDOCK
30-015-29240	WISER OIL CO (THE)	EDDY	S:28, T:17S, R:31E	SKELLY UNIT	285	4/7/1998		No	link		PO	Unknown	SAN ANDRES
30-015-05152	WISER OIL CO (THE)	EDDY	S:15, T:17S, R:31E	SKELLY UNIT	001	10/16/1997	0	No	link	3,692	G	Active	
30-015-22261	WISER OIL CO (THE)	EDDY	S:15, T:17S, R:31E	SKELLY UNIT	127	10/16/1997	0	No	link	2,503	I	Injection Well	
30-015-29762	WISER OIL CO (THE)	EDDY	S:22, T:17S, R:31E	SKELLY UNIT	213	7/29/1997		No	link	3,950	O	Pumping	SAN ANDRES
30-015-05338	WISER OIL CO (THE)	EDDY	S:21, T:17S, R:31E	SKELLY UNIT	068	7/25/1997	0	No	link	3,510	I	Injection Well	
30-015-04885	WISER OIL CO (THE)	EDDY	S:28, T:17S, R:31E	SKELLY UNIT	093	7/17/1997	0	No	link	3,685	I	Injection Well	
30-015-05428	WISER OIL CO (THE)	EDDY	S:28, T:17S, R:31E	SKELLY UNIT	090	7/17/1997	0	No	link	3,630	O	Injection Well	
30-015-05318	WISER OIL CO (THE)	EDDY	S:21, T:17S, R:31E	SKELLY UNIT	060	7/10/1997	0	No	link	0	I	Injection Well	
30-015-05342	WISER OIL CO (THE)	EDDY	S:21, T:17S, R:31E	SKELLY UNIT	065	6/30/1997	99,999	No	link	99,999	I	Injection Well	
30-015-05315	WISER OIL CO (THE)	EDDY	S:21, T:17S, R:31E	SKELLY UNIT	061	6/23/1997	0	No	link	0	I	Injection Well	
30-015-29606	MACK ENERGY CORP	EDDY	S:16, T:17S, R:31E	WILLOW STATE	003	5/14/1997		No	link	5,507	O	Pumping	PADDOCK
30-015-05341	WISER OIL CO (THE)	EDDY	S:21, T:17S, R:31E	SKELLY UNIT	066	4/28/1997	0	No	link	0	I	Injection Well	
30-015-05320	WISER OIL CO (THE)	EDDY	S:21, T:17S, R:31E	SKELLY UNIT	059	4/17/1997	0	No	link	3,654	I	Injection Well	
30-015-05426	WISER OIL CO (THE)	EDDY	S:28, T:17S, R:31E	SKELLY UNIT	088	4/17/1997	0	No	link	3,724	I	Injection Well	
30-015-04884	WISER OIL CO (THE)	EDDY	S:28, T:17S, R:31E	SKELLY UNIT	094	4/15/1997	0	No	link	0	I	Injection Well	SAN ANDRES
30-015-05420	WISER OIL CO (THE)	EDDY	S:27, T:17S, R:31E	SKELLY UNIT	087	4/14/1997	0	No	link	3,560	PI	Injection Well	
30-015-10500	WISER OIL CO (THE)	EDDY	S:22, T:17S, R:31E	SKELLY UNIT	043	4/11/1997	0	No	link	0	G	Active	
30-015-05348	WISER OIL CO (THE)	EDDY	S:22, T:17S, R:31E	SKELLY UNIT	051	4/10/1997		No	link	12,204	O	Shut-in	
30-015-05421	WISER OIL CO (THE)	EDDY	S:27, T:17S, R:31E	SKELLY UNIT	086	3/28/1997	0	No	link	0	I	Injection Well	
30-015-20410	WISER OIL CO (THE)	EDDY	S:27, T:17S, R:31E	SKELLY UNIT	107	3/27/1997	0	No	link	3,860	I	Injection Well	
30-015-05423	WISER OIL CO (THE)	EDDY	S:27, T:17S, R:31E	SKELLY UNIT	084	3/20/1997	0	No	link	0	I	Injection Well	
30-015-05151	WISER OIL CO (THE)	EDDY	S:15, T:17S, R:31E	SKELLY UNIT	029	3/19/1997	0	No	link	3,717	G	Active	
30-015-05353	WISER OIL CO (THE)	EDDY	S:22, T:17S, R:31E	SKELLY UNIT	057	3/8/1997	0	No	link	0	I	Injection Well	
30-015-05358	WISER OIL CO (THE)	EDDY	S:22, T:17S, R:31E	SKELLY UNIT	101	3/3/1997	0	No	link	3,725	I	Injection Well	

30-015-05349	WISER OIL CO (THE)	EDDY	S:22, T:17S, R:31E	SKELLY UNIT	055	2/19/1997	0		No	link	3,690	I	Injection Well	
30-015-05346	WISER OIL CO (THE)	EDDY	S:22, T:17S, R:31E	SKELLY UNIT	045	2/7/1997	0		No	link	3,804	I	Injection Well	
30-015-29314	WISER OIL CO (THE)	EDDY	S:28, T:17S, R:31E	SKELLY UNIT	284	12/20/1996			No	link	4,025	O	Active	GRAYBURG JACKSON
30-015-29239	WISER OIL CO (THE)	EDDY	S:28, T:17S, R:31E	SKELLY UNIT	273	10/23/1996			No	link	3,950	O	Pumping	SAN ANDRES
30-015-29225	WISER OIL CO (THE)	EDDY	S:27, T:17S, R:31E	SKELLY UNIT	276	10/11/1996			No	link	3,950	O	Pumping	SAN ANDRES
30-015-29226	WISER OIL CO (THE)	EDDY	S:27, T:17S, R:31E	SKELLY UNIT	278	10/11/1996			No	link	4,100	O	Active	SAN ANDRES
30-015-29227	WISER OIL CO (THE)	EDDY	S:28, T:17S, R:31E	SKELLY UNIT	283	10/11/1996			No	link	4,000	O	Active	SAN ANDRES
30-015-29208	WISER OIL CO (THE)	EDDY	S:22, T:17S, R:31E	SKELLY UNIT	224	10/4/1996			No	link	4,000	O	Shut-in	SAN ANDRES
30-015-29209	WISER OIL CO (THE)	EDDY	S:27, T:17S, R:31E	SKELLY UNIT	265	10/4/1996			No	link	3,950	O	Active	SAN ANDRES
30-015-29210	WISER OIL CO (THE)	EDDY	S:28, T:17S, R:31E	SKELLY UNIT	274	10/4/1996			No	link	3,950	O	Pumping	SAN ANDRES
30-015-29181	WISER OIL CO (THE)	EDDY	S:21, T:17S, R:31E	SKELLY UNIT	233	9/24/1996			No	link	3,900	O	Pumping	SAN ANDRES
30-015-29182	WISER OIL CO (THE)	EDDY	S:22, T:17S, R:31E	SKELLY UNIT	226	9/24/1996			No	link	4,000	O	Pumping	SAN ANDRES
30-015-29184	WISER OIL CO (THE)	EDDY	S:27, T:17S, R:31E	SKELLY UNIT	263	9/24/1996			No	link	3,900	O	Pumping	SAN ANDRES
30-015-29092	WISER OIL CO (THE)	EDDY	S:15, T:17S, R:31E	SKELLY UNIT	211	8/7/1996	4,800		No	link	4,000	O	Pumping	SAN ANDRES
30-015-29092	WISER OIL CO (THE)	EDDY	S:15, T:17S, R:31E	SKELLY UNIT	211	7/31/1996			No	link	4,000	O	Pumping	SAN ANDRES
30-015-29063	WISER OIL CO (THE)	EDDY	S:21, T:17S, R:31E	SKELLY UNIT	246	7/25/1996			No	link	3,950	O	Pumping	SAN ANDRES
30-015-29064	WISER OIL CO (THE)	EDDY	S:28, T:17S, R:31E	SKELLY UNIT	272	7/25/1996			No	link	3,987	O	Pumping	SAN ANDRES
30-015-29031	WISER OIL CO (THE)	EDDY	S:22, T:17S, R:31E	SKELLY UNIT	212	7/2/1996			No	link	4,060	O	Pumping	SAN ANDRES
30-015-28999	WISER OIL CO (THE)	EDDY	S:27, T:17S, R:31E	SKELLY UNIT	264	6/5/1996			No	link	3,900	O	Shut-in	GRAYBURG JACKSON
30-015-28964	WISER OIL CO (THE)	EDDY	S:21, T:17S, R:31E	SKELLY UNIT	223	5/20/1996	4,800		No	link	3,982	O	Pumping	
30-015-28973	WISER OIL CO (THE)	EDDY	S:22, T:17S, R:31E	SKELLY UNIT	225	5/9/1996			No	link	4,000	O	Pumping	GRAYBURG JACKSON
30-015-28975	WISER OIL CO (THE)	EDDY	S:28, T:17S, R:31E	SKELLY UNIT	259	5/9/1996			No	link	4,000	O	Pumping	GRAYBURG JACKSON
30-015-28976	WISER OIL CO (THE)	EDDY	S:28, T:17S, R:31E	SKELLY UNIT	284Q	5/9/1996			No	link		O	Active	GRAYBURG JACKSON
30-015-28967	WISER OIL CO (THE)	EDDY	S:27, T:17S, R:31E	SKELLY UNIT	277	5/2/1996			No	link	4,100	O	Pumping	GRAYBURG-JACKSON
30-015-28964	WISER OIL CO (THE)	EDDY	S:21, T:17S, R:31E	SKELLY UNIT	223	3/31/1996			No	link	3,982	O	Pumping	GRAYBURG-JACKSON
30-015-28892	WISER OIL CO (THE)	EDDY	S:21, T:17S, R:31E	SKELLY UNIT	220	3/27/1996			No	link	3,800	O	Pumping	GRAYBURG JACKSON
30-015-28893	WISER OIL CO (THE)	EDDY	S:21, T:17S, R:31E	SKELLY UNIT	221	3/27/1996			No	link	3,850	O	Pumping	GRAYBURG JACKSON
30-015-28894	WISER OIL CO (THE)	EDDY	S:21, T:17S, R:31E	SKELLY UNIT	222	3/27/1996			No	link	3,900	O	Active	GRAYBURG JACKSON
	MACK ENERGY			WILLOW										

30-015-28880	CORP	EDDY	S:16, T:17S, R:31E	STATE	001	3/18/1996			No	link	8,990	O	Pumping	WOLFCAMP
30-015-28881	WISER OIL CO (THE)	EDDY	S:28, T:17S, R:31E	SKELLY UNIT	275	3/13/1996			No	link	4,000	O	Pumping	QUEEN
30-015-28810	WISER OIL CO (THE)	EDDY	S:21, T:17S, R:31E	SKELLY UNIT	248	1/29/1996			No	link	3,950	O	Pumping	QUEEN
30-015-28811	WISER OIL CO (THE)	EDDY	S:21, T:17S, R:31E	SKELLY UNIT	260	1/29/1996			No	link	3,950	O	Pumping	QUEEN
30-015-28812	WISER OIL CO (THE)	EDDY	S:28, T:17S, R:31E	SKELLY UNIT	261	1/29/1996			No	link	3,950	O	Pumping	QUEEN
30-015-28783	WISER OIL CO (THE)	EDDY	S:21, T:17S, R:31E	SKELLY UNIT	234	1/17/1996			No	link	3,950	O	Pumping	QUEEN
30-015-28784	WISER OIL CO (THE)	EDDY	S:21, T:17S, R:31E	SKELLY UNIT	235	1/17/1996			No	link	3,950	O	Pumping	QUEEN
30-015-28788	WISER OIL CO (THE)	EDDY	S:21, T:17S, R:31E	SKELLY UNIT	247	1/17/1996			No	link	3,950	O	Active	QUEEN
30-015-28789	WISER OIL CO (THE)	EDDY	S:21, T:17S, R:31E	SKELLY UNIT	262	1/17/1996			No	link	3,950	O	Pumping	QUEEN
30-015-05150	WISER OIL CO (THE)	EDDY	S:15, T:17S, R:31E	SKELLY UNIT	031	9/1/1995	0		No	link	3,800	O	Shut-in	
30-015-05162	WISER OIL CO (THE)	EDDY	S:15, T:17S, R:31E	SKELLY UNIT	032	9/1/1995	0		No	link	0	I	Injection Well	
30-015-05319	WISER OIL CO (THE)	EDDY	S:21, T:17S, R:31E	SKELLY UNIT	064	9/1/1995	0		No	link	3,586	I	Injection Well	
30-015-05321	WISER OIL CO (THE)	EDDY	S:21, T:17S, R:31E	SKELLY UNIT	009	9/1/1995	0		No	link	0	O	Pumping	
30-015-05323	WISER OIL CO (THE)	EDDY	S:21, T:17S, R:31E	SKELLY UNIT	013	9/1/1995	0		No	link	0	O	Active	
30-015-05324	WISER OIL CO (THE)	EDDY	S:21, T:17S, R:31E	SKELLY UNIT	012	9/1/1995	0		No	link	2,235	G	Active	
30-015-05325	WISER OIL CO (THE)	EDDY	S:21, T:17S, R:31E	SKELLY UNIT	010	9/1/1995	0		No	link	2,247	G	Active	
30-015-05328	WISER OIL CO (THE)	EDDY	S:21, T:17S, R:31E	SKELLY UNIT	008	9/1/1995	0		No	link	0	O	Active	
30-015-05329	WISER OIL CO (THE)	EDDY	S:21, T:17S, R:31E	SKELLY UNIT	004	9/1/1995	0		No	link	0	O	Active	
30-015-05330	WISER OIL CO (THE)	EDDY	S:21, T:17S, R:31E	SKELLY UNIT	011	9/1/1995	0		No	link	0	O	Shut-in	
30-015-05333	WISER OIL CO (THE)	EDDY	S:21, T:17S, R:31E	SKELLY UNIT	075	9/1/1995	0		No	link	0	I	Injection Well	
30-015-05334	WISER OIL CO (THE)	EDDY	S:21, T:17S, R:31E	SKELLY UNIT	016	9/1/1995	0		No	link	2,250	G	Active	
30-015-05335	WISER OIL CO (THE)	EDDY	S:21, T:17S, R:31E	SKELLY UNIT	005	9/1/1995	0		No	link	0	O	Pumping	
30-015-05339	WISER OIL CO (THE)	EDDY	S:21, T:17S, R:31E	SKELLY UNIT	067	9/1/1995	0		No	link	0	I	Injection Well	
30-015-05340	WISER OIL CO (THE)	EDDY	S:21, T:17S, R:31E	SKELLY UNIT	077	9/1/1995	0		No	link	3,650	I	Injection Well	
30-015-05344	WISER OIL CO (THE)	EDDY	S:22, T:17S, R:31E	SKELLY UNIT	002	9/1/1995	0		No	link	0	O	Pumping	
30-015-05345	WISER OIL CO (THE)	EDDY	S:22, T:17S, R:31E	SKELLY UNIT	052	9/1/1995	0		No	link	2,170	I	Injection Well	
30-015-05347	WISER OIL CO (THE)	EDDY	S:22, T:17S, R:31E	SKELLY UNIT	003	9/1/1995	0		No	link	12,384	O	Active	
30-015-05350	WISER OIL CO (THE)	EDDY	S:22, T:17S, R:31E	SKELLY UNIT	056	9/1/1995	0		No	link	3,709	I	Injection Well	
30-015-05351	WISER OIL CO (THE)	EDDY	S:22, T:17S, R:31E	SKELLY UNIT	054	9/1/1995	0		No	link	3,800	PI	Injection Well	

30-015-05352	WISER OIL CO (THE)	EDDY	S:22, T:17S, R:31E	SKELLY UNIT	053	9/1/1995	0	No	link	3,810	G	Active	
30-015-05354	WISER OIL CO (THE)	EDDY	S:22, T:17S, R:31E	SKELLY UNIT	044	9/1/1995	0	No	link	3,804	I	Shut-in	
30-015-05355	WISER OIL CO (THE)	EDDY	S:22, T:17S, R:31E	SKELLY UNIT	058	9/1/1995	0	No	link	0	I	Injection Well	
30-015-05356	WISER OIL CO (THE)	EDDY	S:22, T:17S, R:31E	SKELLY UNIT	042	9/1/1995		No	link	2,165	I	Injection Well	
30-015-05357	WISER OIL CO (THE)	EDDY	S:22, T:17S, R:31E	SKELLY UNIT	046	9/1/1995	0	No	link	3,820	I	Injection Well	
30-015-05422	WISER OIL CO (THE)	EDDY	S:27, T:17S, R:31E	SKELLY UNIT	085	9/1/1995	0	No	link	3,803	I	Injection Well	
30-015-05424	WISER OIL CO (THE)	EDDY	S:27, T:17S, R:31E	SKELLY UNIT	096	9/1/1995	0	No	link	0	I	Injection Well	
30-015-05425	WISER OIL CO (THE)	EDDY	S:27, T:17S, R:31E	SKELLY UNIT	097	9/1/1995	0	No	link	0	O	Shut-in	PLUG & ABANDON
30-015-05429	WISER OIL CO (THE)	EDDY	S:28, T:17S, R:31E	SKELLY UNIT	089	9/1/1995	0	No	link	3,670	I	Injection Well	
30-015-05441	WISER OIL CO (THE)	EDDY	S:28, T:17S, R:31E	SKELLY UNIT	095	9/1/1995		No	link	3,783	I	Injection Well	
30-015-10774	WISER OIL CO (THE)	EDDY	S:15, T:17S, R:31E	SKELLY UNIT	030	9/1/1995	0	No	link	3,906	G	Active	PLUGGED & ABANDON
30-015-21089	WISER OIL CO (THE)	EDDY	S:22, T:17S, R:31E	SKELLY UNIT	115	9/1/1995		No	link	3,910	O	Temporarily Abandoned	
30-015-21090	WISER OIL CO (THE)	EDDY	S:22, T:17S, R:31E	SKELLY UNIT	116	9/1/1995	0	No	link	4,000	O	Active	
30-015-22251	WISER OIL CO (THE)	EDDY	S:22, T:17S, R:31E	SKELLY UNIT	117	9/1/1995	0	No	link	0	O	Pumping	
30-015-22252	WISER OIL CO (THE)	EDDY	S:22, T:17S, R:31E	SKELLY UNIT	118	9/1/1995		No	link	2,580	O	Temporarily Abandoned	
30-015-22256	WISER OIL CO (THE)	EDDY	S:22, T:17S, R:31E	SKELLY UNIT	122	9/1/1995	0	No	link	2,600	O	Pumping	
30-015-22257	WISER OIL CO (THE)	EDDY	S:22, T:17S, R:31E	SKELLY UNIT	123	9/1/1995	0	No	link	2,580	O	Shut-in	
30-015-22258	WISER OIL CO (THE)	EDDY	S:22, T:17S, R:31E	SKELLY UNIT	124	9/1/1995	0	No	link	11,065	O	Active	
30-015-22259	WISER OIL CO (THE)	EDDY	S:22, T:17S, R:31E	SKELLY UNIT	125	9/1/1995	0	No	link	2,500	O	Active	
30-015-22260	WISER OIL CO (THE)	EDDY	S:15, T:17S, R:31E	SKELLY UNIT	126	9/1/1995	0	No	link	2,530	O	Active	
30-015-22263	WISER OIL CO (THE)	EDDY	S:21, T:17S, R:31E	SKELLY UNIT	129	9/1/1995	0	No	link	0	O	Active	
30-015-22264	WISER OIL CO (THE)	EDDY	S:28, T:17S, R:31E	SKELLY UNIT	130	9/1/1995	0	No	link	2,550	O	Active	
30-015-22265	WISER OIL CO (THE)	EDDY	S:28, T:17S, R:31E	SKELLY UNIT	131	9/1/1995	0	No	link	2,600	O	Pumping	
30-015-22266	WISER OIL CO (THE)	EDDY	S:27, T:17S, R:31E	SKELLY UNIT	132	9/1/1995	0	No	link	2,600	O	Pumping	
30-015-22267	WISER OIL CO (THE)	EDDY	S:27, T:17S, R:31E	SKELLY UNIT	133	9/1/1995	0	No	link	2,700	O	Pumping	
30-015-22268	WISER OIL CO (THE)	EDDY	S:27, T:17S, R:31E	SKELLY UNIT	134	9/1/1995	0	No	link	2,650	O	Pumping	
30-015-22269	WISER OIL CO (THE)	EDDY	S:27, T:17S, R:31E	SKELLY UNIT	135	9/1/1995	0	No	link	2,740	O	Pumping	
30-015-22506	WISER OIL CO (THE)	EDDY	S:28, T:17S, R:31E	SKELLY UNIT	137	9/1/1995	0	No	link	2,550	O	Active	
	WISER OIL CO			SKELLY									

30-015-25037	(THE)	EDDY	S:21, T:17S, R:31E	UNIT	149	9/1/1995		No	link	3,900	PO	Active	
30-015-25038	WISER OIL CO (THE)	EDDY	S:22, T:17S, R:31E	SKELLY UNIT	156	9/1/1995	0	No	link	3,685	O	Active	
30-015-25039	WISER OIL CO (THE)	EDDY	S:22, T:17S, R:31E	SKELLY UNIT	157	9/1/1995		No	link	3,705	PO	Active	
30-015-25041	WISER OIL CO (THE)	EDDY	S:22, T:17S, R:31E	SKELLY UNIT	159	9/1/1995		No	link	3,962	PO	Active	
30-015-25042	WISER OIL CO (THE)	EDDY	S:22, T:17S, R:31E	SKELLY UNIT	160	9/1/1995		No	link	3,900	PO	Active	
30-015-28140	WISER OIL CO (THE)	EDDY	S:28, T:17S, R:31E	SKELLY UNIT	161	9/1/1995		No	link	12,080	G	Active	
30-015-25040	WISER OIL CO (THE)	EDDY	S:22, T:17S, R:31E	SKELLY UNIT	158	8/31/1995		No	link	4,049	PO	Temporarily Abandoned	
30-015-25040	WISER OIL CO (THE)	EDDY	S:22, T:17S, R:31E	SKELLY UNIT	158	10/3/1984	3,900	No	link	4,049	PO	Temporarily Abandoned	7 RIVERS, GRAYBURG
30-015-05342	WISER OIL CO (THE)	EDDY	S:21, T:17S, R:31E	SKELLY UNIT	065	1/1/1970	4,800	No	link	99,999	I	Injection Well	
30-015-02064	STEVENS OPERATING CORPORATION or HANAGAN PETROLEUM CORP	EDDY	S:28, T:18S, R:28E	PRE-ONGARD WELL	004	1/1/1970		No	link		O	Active	MOREXCO /TWIN LAKES



Not To Scale

COG OPERATING LLC  
Rig Layout-Closed Loop  
System Skelly Unit 739

