

COG Operating LLC

Hydrogen Sulfide Drilling Operation Plan

I. HYDROGEN SULFIDE TRAINING

All personnel, whether regularly assigned, contracted, or employed on an unscheduled basis, will receive training from a qualified instructor in the following areas prior to commencing drilling operations on this well:

1. The hazards and characteristics of hydrogen sulfide (H₂S)
2. The proper use and maintenance of personal protective equipment and life support systems.
3. The proper use of H₂S detectors, alarms, warning systems, briefing areas, evacuation procedures, and prevailing winds.
4. The proper techniques for first aid and rescue procedures.

In addition, supervisory personnel will be trained in the following areas:

1. The effects of H₂S on metal components. If high tensile tubular are to be used, personnel will be trained in their special maintenance requirements.
2. Corrective action and shut-in procedures when drilling or reworking a well and blowout prevention and well control procedures.
3. The contents and requirements of the H₂S Drilling Operations Plan and Public Protection Plan.

There will be an initial training session just prior to encountering a known or probable H₂S zone (within 3 days or 500 feet) and weekly H₂S and well control drills for all personnel in each crew. The initial training session shall include a review of the site specific H₂S Drilling Operations Plan and the Public Protection Plan. **The concentrations of H₂S of wells in this area from surface to TD are low enough that a contingency plan is not required.**

30-015-38346

II. H2S SAFETY EQUIPMENT AND SYSTEMS

Note: All H2S safety equipment and systems will be installed, tested, and operational when drilling reaches a depth of 500 feet above, or three days prior to penetrating the first zone containing or reasonable expected to contain H2S.

1. Well Control Equipment:

- A. Flare line.
- B. Choke manifold.
- C. Blind rams and pipe rams to accommodate all pipe sizes with properly sized closing unit.
- D. Auxiliary equipment may include if applicable: annular preventer & rotating head.

2. Protective equipment for essential personnel:

- A. Mark II Survive air 30-minute units located in the doghouse and at briefing areas, as indicated on well site diagram.

3. H2S detection and monitoring equipment:

- A. 1 portable H2S monitors positioned on location for best coverage and response. These units have warning lights and audible sirens when H2S levels of 20 PPM are reached.

4. Visual warning systems:

- A. Wind direction indicators as shown on well site diagram (Exhibit #8).
- B. Caution/Danger signs (Exhibit #7) shall be posted on roads providing direct access to location. Signs will be painted a high visibility yellow with black lettering of sufficient size to be readable at a reasonable distance from the immediate location. Bilingual signs will be used, when appropriate. See example attached.

5. Mud program:

- A. The mud program has been designed to minimize the volume of H2S circulated to surface. Proper mud weight, safe drilling practices, and the use of H2S scavengers will minimize hazards when penetrating H2S bearing zones.

6. Metallurgy:

- A. All drill strings, casings, tubing, wellhead, blowout preventer, drilling spool, kill lines, choke manifold and lines, and valves shall be suitable for H₂S service.
- B. All elastomers used for packing and seals shall be H₂S trim.

7. Communication:

- A. Radio communications in company vehicles including cellular telephone and 2-way radio.
- B. Land line (telephone) communication at Office.

8. Well testing:

- A. Drill stem testing will be performed with a minimum number of personnel in the immediate vicinity, which are necessary to safely and adequately conduct the test. The drill stem testing will be conducted during daylight hours and formation fluids will not be flowed to the surface. All drill-stem-testing operations conducted in an H₂S environment will use the closed chamber method of testing.
- B. There will be no drill stem testing.

EXHIBIT #7

WARNING
YOU ARE ENTERING AN H₂S
AUTHORIZED PERSONNEL ONLY

- 1. BEARDS OR CONTACT LENSES NOT ALLOWED
- 2. HARD HATS REQUIRED
- 3. SMOKING IN DESIGNATED AREAS ONLY
- 4. BE WIND CONSCIOUS AT ALL TIMES
- 5. CHECK WITH COG OPERATING FOREMAN AT

COG OPERATING LLC
1-432-683-7443
1-575-746-2010

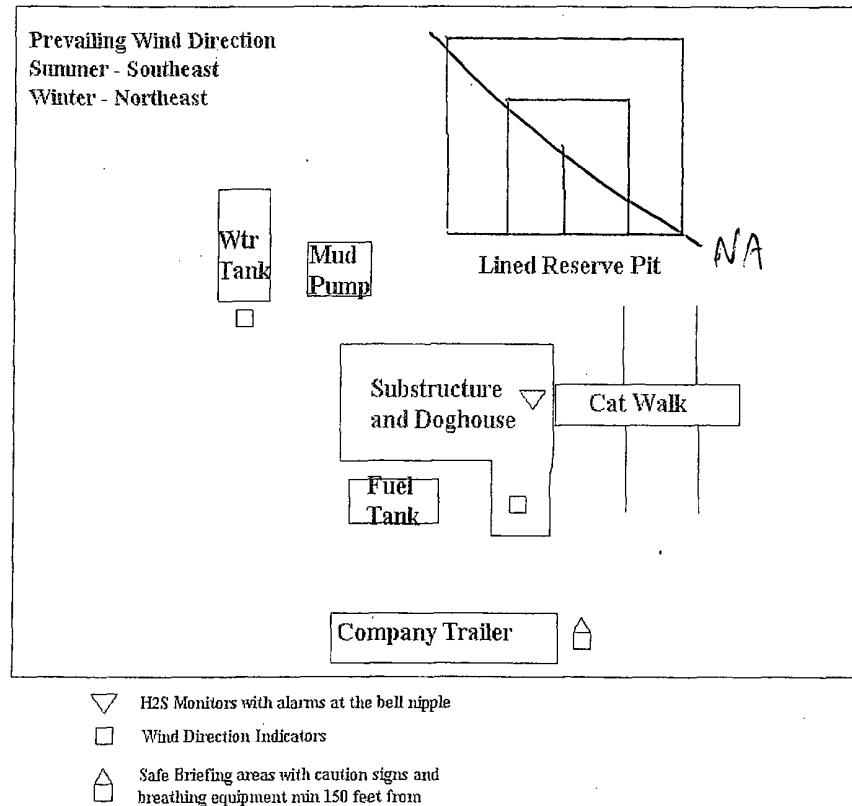
EDDY COUNTY EMERGENCY NUMBERS

ARTESIA FIRE DEPT. 575-746-5050
ARTESIA POLICE DEPT. 575-746-5000
EDDY CO. SHERIFF DEPT. 575-746-9888

LEA COUNTY EMERGENCY NUMBERS

HOBBS FIRE DEPT. 575-397-9308
HOBBS POLICE DEPT. 575-397-9285
LEA CO. SHERIFF DEPT. 575-396-1196

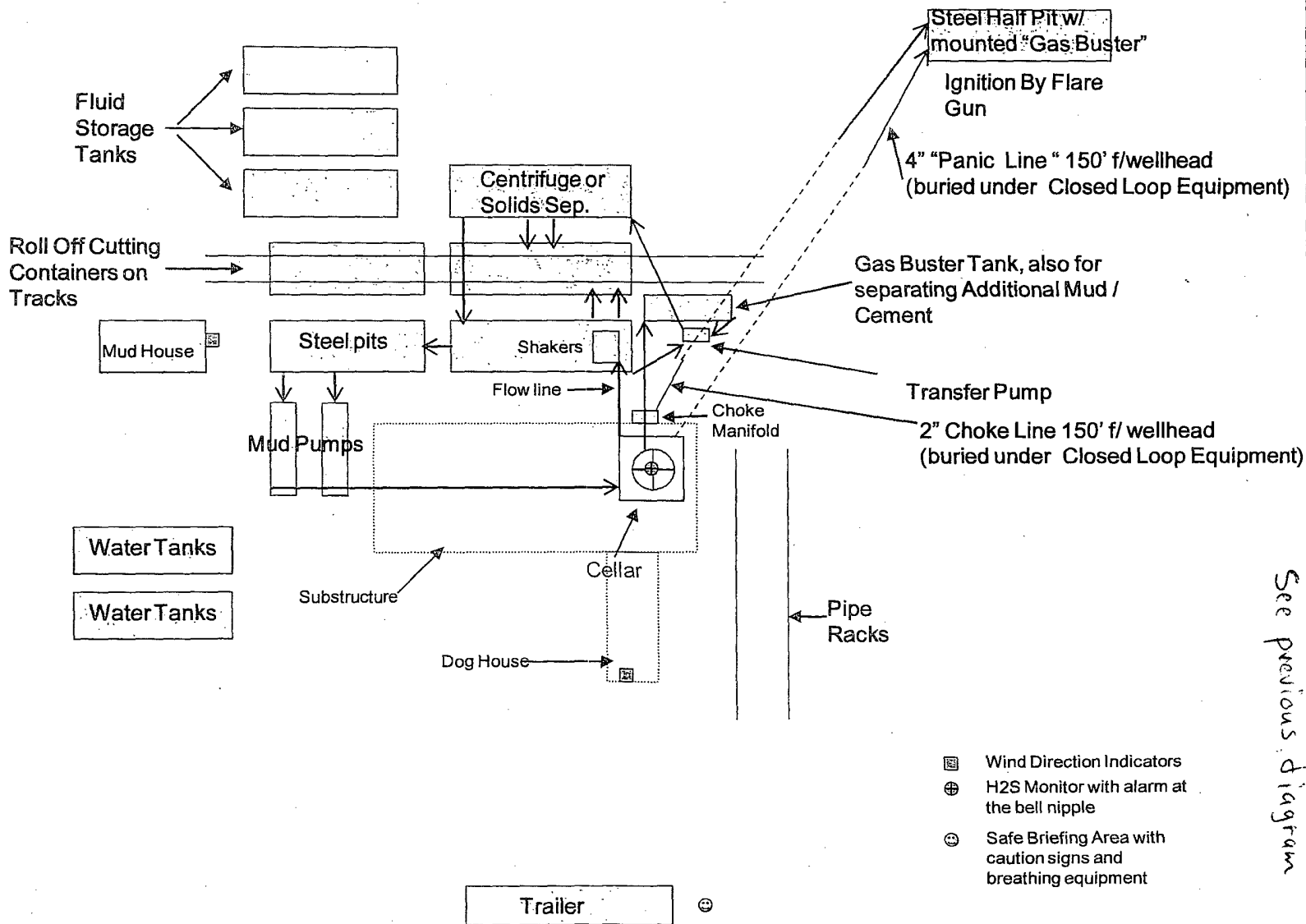
DRILLING LOCATION H₂S SAFETY EQUIPMENT Exhibit # 8



COG Operating LLC

EXHIBIT 8

Drilling Location - H2S Safety Equipment Diagram



SURFACE USE AND OPERATING PLAN

1. Existing & Proposed Access Roads

- A. The well site survey and elevation plat for the proposed well is shown in Exhibit #1. It was staked by John West Engineering, Hobbs, NM.
- B. All roads to the location are shown in the topographic map Exhibit #2. The existing lease roads are illustrated and are adequate for travel during drilling and production operations. Upgrading existing roads prior to drilling the well will be done where necessary.
- C. **Directions to Location:** From the intersection US Highway 82 and Co. Rd. 223 (Sweet Gum Road), Go North-Northwest on Sweet Gum Rd. apprx 0.2 mile. Turn Right & Go East apprx 0.2 mile. This location stake is apprx 350 feet Southeast of Lease Road. See Vicinity Map, Exhibit #3.
- D. Routine grading and maintenance of existing roads will be conducted as necessary to maintain their condition as long as any operations continue on this lease. Roads will be maintained according to specifications in section 2A of this Surface Use and Operating Plan.

2. Proposed Access Road:

Exhibit #4 shows that 143' of new access road will be required for this location. If any road is required it will be constructed as follows:

- A. The maximum width of the running surface will be 14'. The road will be crowned, ditched and constructed of 6" rolled and compacted caliche. Ditches will be at 3:1 slope and 4 feet wide. Water will be diverted where necessary to avoid ponding, prevent erosion, maintain good drainage, and to be consistent with local drainage patterns.
- B. The average grade will be less than 1%.
- C. No turnouts are planned.
- D. No culverts, cattleguard, gates, low water crossings or fence cuts are necessary.
- E. Surfacing material will consist of native caliche. Caliche will be obtained from the actual well site if available. If not available onsite, caliche will be hauled from the nearest BLM caliche pit.

3. Location of Existing Well:

Exhibit #5 shows all existing wells within a one-mile radius of this well.

As shown on this plat there are numerous wells producing from the San Andres and Yeso formations.

4. Location of Existing and/or Proposed Facilities:

A. COG Operating LLC does operate a production facility on this lease.

B. If the well is productive, contemplated facilities will be as follows:

- 1) Production will be sent to the Skelly 973 Federal tank battery located well location @ 430 FNL & 2435 FEL, Section 21, T17S, R31E, UL B. The facility location is shown in Exhibit #5.
- 2) The tank battery and facilities including all flow lines and piping will be installed according to API specifications.
- 3) Any additional caliche will be obtained from the actual well site. If caliche does not exist or is not plentiful from the well site, the caliche will be hauled from a BLM approved caliche pit. Any additional construction materials will be purchased from contractors.
- 4) Proposed flow lines, will follow an archaeologically approved route to the Skelly 973 Federal tank battery located well location @ 430 FNL & 2435 FEL, Section 21, T17S, R31E, UL B. The flowline will be SDR 7 3" poly line laid on the surface and will be approximately 4900' in length with max pressure 100 psi. Flowlines will be no more than 11' from the paralleling road. The facility location is shown in Exhibit #5.
- 5) It will be necessary to run electric power if this well is productive. Power will be provided by CVE and they will submit a separate plan and ROW for service to the well location.
- 6) If the well is productive, rehabilitation plans will include the following:
 - a) The original topsoil from the well site will be returned to the location, and the site will be re-contoured as close as possible to the original site.

5. Location and Type of Water Supply:

The well will be drilled with combination brine and fresh water mud system as outlined in the drilling program. The water will be obtained from commercial water stations in the area and hauled to location by transport truck over the existing and proposed access roads shown in Exhibit #2. If a commercial fresh water source is nearby, fast line may be laid along existing road ROW's and fresh water pumped to the well. No water well will be drilled on the location.

6. Source of Construction Materials and Location "Turn-Over" Procedure:

Obtaining caliche: The primary way of obtaining caliche to build locations and roads will be by "turning over" the location. This means, caliche will be obtained from the actual well sight. A caliche permit will be obtained from BLM prior to pushing up any caliche. 2400 cu. Yards is max amount of caliche needed for pad and roads. Amount will vary for each pad. The procedure below has been approved by BLM personnel:

- A. The top 6 inches of topsoil is pushed off and stockpiled along the side of the location.**
- B. An approximate 120' X 120' area is used within the proposed well site to remove caliche.**
- C. Subsoil is removed and piled along side the 120' by 120' area within the pad site.**
- D. When caliche is found, material will be stock piled within the pad site to build the location and road.**
- E. Then subsoil is pushed back in the hole and caliche is spread accordingly across entire location and road.**
- F. Once well is drilled, the stock piled top soil will be used for interim reclamation and spread along areas where caliche is picked up and the location size is reduced. Neither caliche or subsoil will be stock piled outside of the well pad. Topsoil will be stockpiled along the edge of the pad as depicted in attached plat.**

In the event that no caliche is found onsite, caliche will be hauled in from a BLM approved caliche pit.

7. Methods of Handling Water Disposal:

- A. The well will be drilled utilizing a closed loop mud system. Drill cuttings will be held in roll-off style mud boxes and taken to an NMOCD approved disposal site.**
- B. Drilling fluids will be contained in steel mud pits.**

- C. Water produced from the well during completion will be held temporarily in steel tanks and then taken to an NMOCD approved commercial disposal facility.
- D. Garbage and trash produced during drilling or completion operations will be collected in a trash bin and hauled to an approved landfill. No toxic waste or hazardous chemicals will be produced by this operation.
- E. After the rig is moved out and the well is either completed or abandoned, all waste materials will be cleaned up within 30 days. In the event of a dry hole only a dry hole marker will remain.

8. Ancillary Facilities:

No airstrip, campsite or other facilities will be built as a result of the operation on this well.

9. Well Site Layout:

- A. The drill pad layout, with elevations staked by John West Engineering, is shown in Exhibit #4. Dimensions of the pad and pits are shown on Exhibit #6. V door direction is East. Topsoil, if available, will be stockpiled per BLM specifications. Because the pad is almost level no major cuts will be required.
- B. Exhibit #6 also shows the proposed orientation of closed loop system and access road. No permanent living facilities are planned, but a temporary foreman/toolpusher's trailer will be on location during the drilling operations.

10. Plans for Restoration of the Surface:

- A. Interim Reclamation will take place after the well has been completed. The pad will be downsized by reclaiming the areas not needed for production operations. The portions of the pad that are not needed for production operations will be recontoured to its original state as much as possible. The caliche that is removed will be reused to either build another pad site or for road repairs within the lease. The stockpiled topsoil will then be spread out reclaimed area and reseeded with a BLM approved seed mixture. In the event that the well must be worked over or maintained, it may be necessary to drive, park, and/or operate machinery on reclaimed land. This area will be repaired or reclaimed after work is complete. Pad will be approx. 200'X250' when reclaimed.

- B. Final Reclamation: Upon plugging and abandoning the well, All caliche for well pad and lease road will be removed and surface will be recountoured to reflect its surroundings as much as possible. Caliche will be recycled for road repair or reused for another well pad within the lease. If any topsoil remains, it will be spread out and the area will be re-seeded with a BLM approved mixture and revegetated as per BLM orders.

11.Surface Ownership:

- A. The surface is owned by the U.S. Government and is administered by the Bureau of Land Management. The surface is multiple uses with the primary uses of the region for grazing of livestock and the production of oil and gas.
- B. The surface tenant for this site is Charles Martin, P.O. Box 706, Artesia NM 88211.
- C. The proposed road routes and surface location will be restored as directed by the BLM

12.Other Information:

- A. The area around the well site is grassland and the topsoil is sandy. The vegetation is moderately sparse with native prairie grasses, some mesquite and shinnery oak. No wildlife was observed but it is likely that mule deer, rabbits, coyotes and rodents traverse the area.
- B. There is no permanent or live water in the immediate area.
- C. There are no dwellings within 2 miles of this location.
- D. If needed, a Cultural Resources Examination is being prepared by Southern New Mexico Archaeological Services, Inc. P.O. Box 1, Bent New Mexico, 88314, phone # 505-671-4797 and the results will be forwarded to your office in the near future. Otherwise, **COG will be participating in the Permian Basin MOA Program.**

Surface Use Plan
COG Operating, LLC
Skelly Unit 715
1650' FSL & 330' FEL
Section 21, T-17-S, R-31-E, UL I
Eddy County, New Mexico

13. Bond Coverage:

Bond Coverage is Nationwide Bond # 000215

14. Lessee's and Operator's Representative:

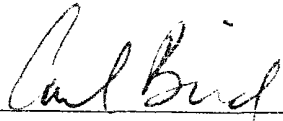
The COG Operating LLC representative responsible for assuring compliance with the surface use plan is as follows:

John Coffman,	Erick Nelson.
Drilling Superintendent	Division Operations Manager
COG Operating LLC	COG Operating LLC
550 W. Texas, Suite 1300	550 W. Texas, Suite 1300
Midland, TX 79701	Midland, TX 79701
Phone (432) 683-7443 (office)	Phone (505) 746-2210 (office)
(432) 631-9762 (cell)	(432) 238-7591 (cell)

Surface Use Plan
COG Operating, LLC
Skelly Unit 715
1650' FSL & 330' FEL
Section 21, T-17-S, R-31-E, UL I
Eddy County, New Mexico

I hereby certify that I, or persons under my direct supervision, have inspected the drill site and access road proposed herein; that I am familiar with the conditions that presently exist; that I have full knowledge of State and Federal laws applicable to this operation; that the statements made in this APD package are, to the best of my knowledge, true and correct; and that the work associated with the operations proposed herein will be performed in conformity with this APD package and the terms and conditions under which it is approved. I also certify that I, or COG Operating, LLC, am responsible for the operations conducted under this application. These statements are subject to the provisions of 18 U.S.C. 1001 for the filing of false statements. Executed this 27th day of August, 2010.

Signed: _____



Printed Name: Carl Bird

Position: Drilling Engineer

Address: 550 W. Texas, Suite 1300, Midland, Texas 79701

Telephone: (432) 683-7443

Field Representative (if not above signatory): Same

E-mail: cbird@conchoresources.com

Surface Use Plan
COG Operating, LLC
Skelly Unit 715
1650' FSL & 330' FEL
Section 21, T-17-S, R-31-E, UL I
Eddy County, New Mexico

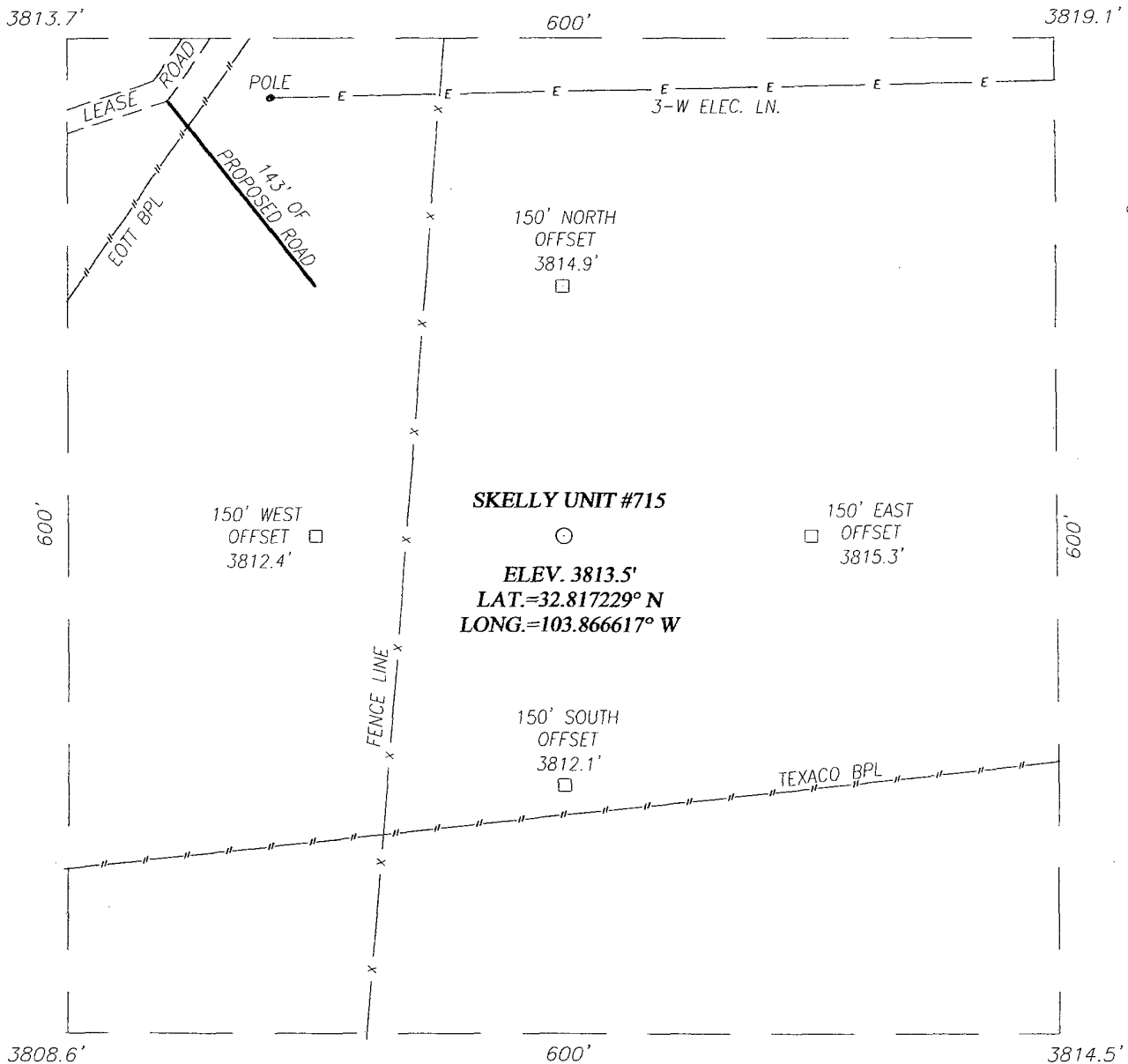
Exhibits:

- | | |
|--------------------|---|
| Exhibit #1 | Wellsite and Elevation Plat |
| | Form C-102 Well location and acreage dedication plat |
| Exhibit #2 | Topographic Map (West) |
| Exhibit #3 | Vicinity Map and area roads |
| Exhibit #4 | Elevation Plat (West) |
| Exhibit #5 | Topographic extract showing wells, roads and flowlines |
| Exhibit #6 | Pad Layout and orientation |
| Exhibit #7 | H2S Signage |
| Exhibit #8 | H2S Equipment location |
| Exhibit #9 | BOP and Choke diagrams |
| Exhibit #10 | Form C-144 NMOCD pit permit application |

SECTION 21, TOWNSHIP 17 SOUTH, RANGE 31 EAST, N.M.P.M.

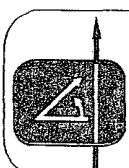
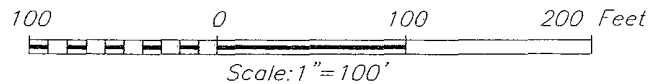
EDDY COUNTY

NEW MEXICO



DIRECTIONS TO LOCATION

FROM THE INTERSECTION OF U.S. HIGHWAY #82 AND COUNTY ROAD 223 (SWEET GUM RD) GO NORTH-NORTHWEST ON CO. RD. #223 APPROX. 0.2 MILES. TURN RIGHT AND GO EAST APPROX. 0.2 MILES. THE LOCATION STAKE IS APPROX. 350 FEET SOUTHEAST OF LEASE ROAD.



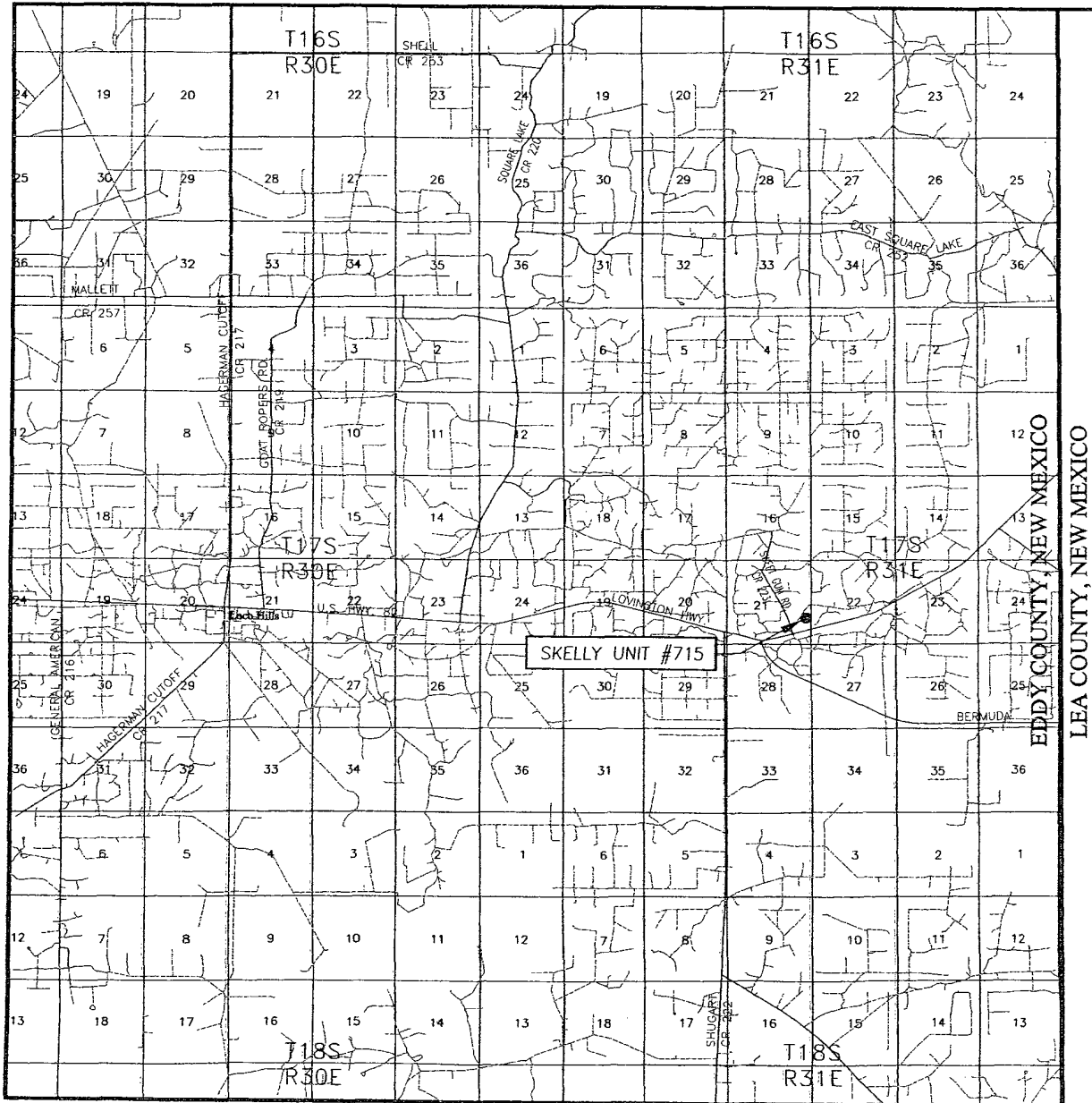
PROVIDING SURVEYING SERVICES
SINCE 1946
JOHN WEST SURVEYING COMPANY
412 N. DAL PASO
HOBBS, N.M. 88240
(575) 393-3117

COG OPERATING, LLC

SKELLY UNIT #715 WELL
LOCATED 1650 FEET FROM THE SOUTH LINE
AND 330 FEET FROM THE EAST LINE OF SECTION 21,
TOWNSHIP 17 SOUTH, RANGE 31 EAST, N.M.P.M.,
EDDY COUNTY, NEW MEXICO

Survey Date: 8/13/10	Sheet 1 of 1 Sheets
W.O. Number: 10.11.1030	Dr By: LA
Date: 8/23/10	10111030
	Scale: 1"=100'

VICINITY MAP



SCALE: 1" = 2 MILES

SEC. 21 TWP. 17-S RGE. 31-E

SURVEY N.M.P.M.

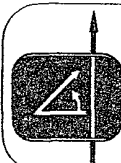
COUNTY EDDY STATE NEW MEXICO

DESCRIPTION 1650' FSL & 330' FEL

ELEVATION 3813'

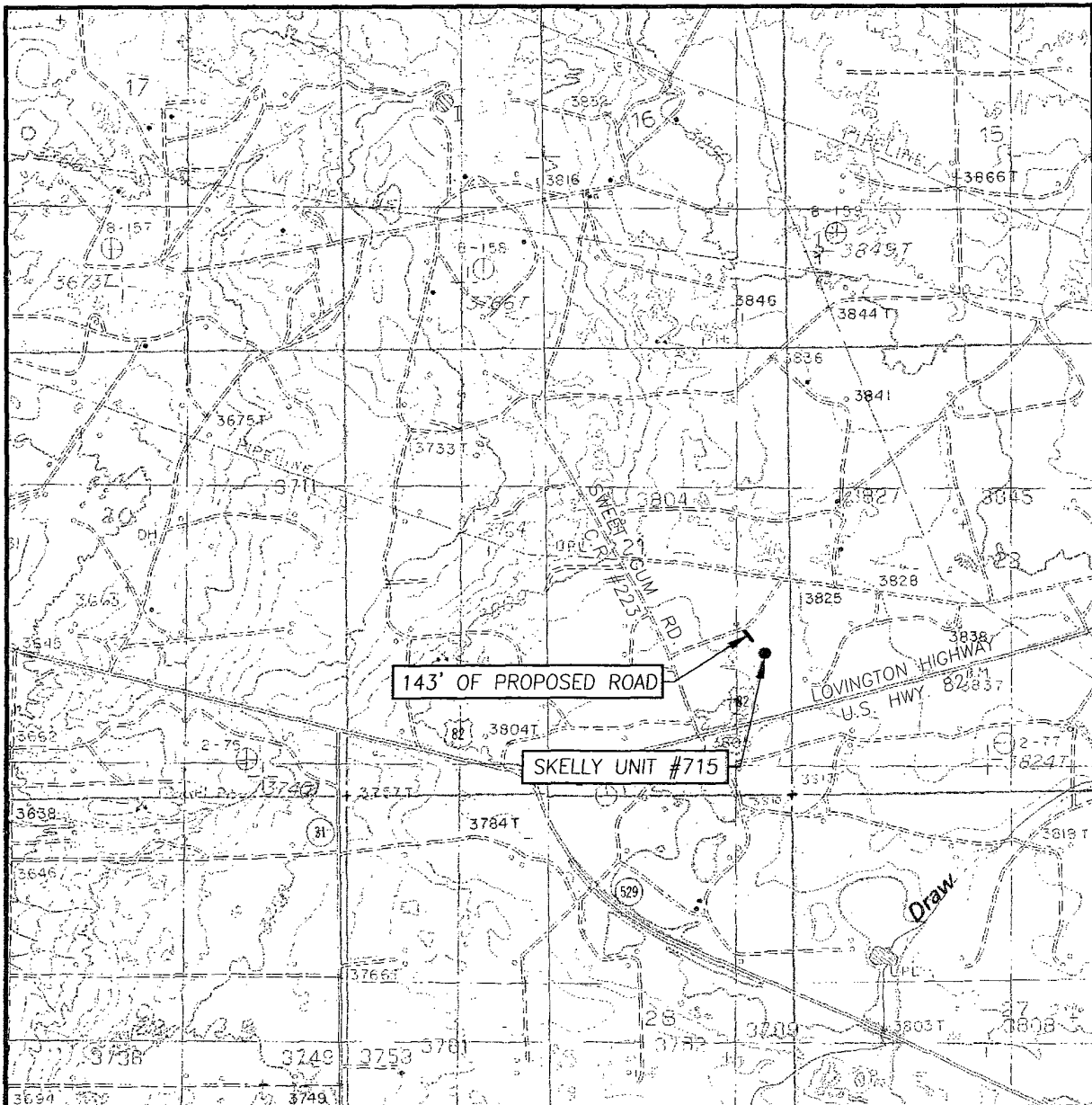
OPERATOR COG OPERATING, LLC

LEASE SKELLY UNIT



PROVIDING SURVEYING SERVICES
SINCE 1946
JOHN WEST SURVEYING COMPANY
412 N. DAL PASO
HOBBS, N.M. 88240
(575) 393-3117

LOCATION VERIFICATION MAP



SCALE: 1" = 2000'

CONTOUR INTERVAL:
 LOCO HILLS, N.M. - 10'
 MALJAMAR, N.M. - 10'

SEC. 21 TWP. 17-S RGE. 31-E

SURVEY N.M.P.M.

COUNTY EDDY STATE NEW MEXICO


DESCRIPTION 1650' FSL & 330' FEL

ELEVATION 3813'

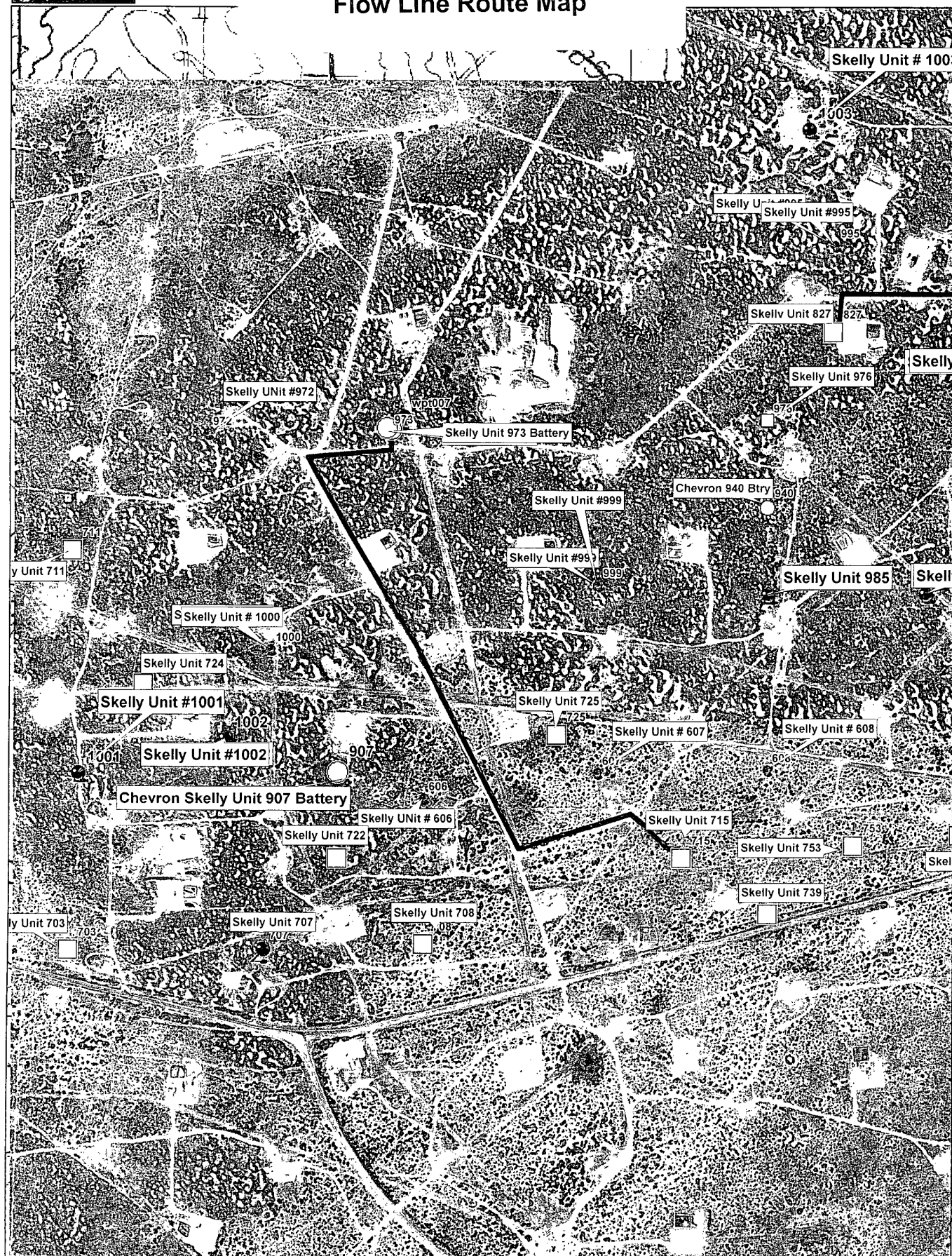
OPERATOR COG OPERATING, LLC

LEASE SKELLY UNIT

U.S.G.S. TOPOGRAPHIC MAP
 MALJAMAR, N.M.



PROVIDING SURVEYING SERVICES
 SINCE 1946
JOHN WEST SURVEYING COMPANY
 412 N. DAL PASO
 HOBBS, N.M. 88240
 (575) 393-3117

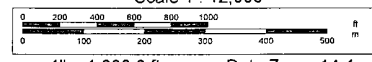


Data use subject to license.

© DeLorme. XMap® 7.

www.delorme.com

Scale 1 : 12,000


$$1'' = 1,000.0 \text{ ft}$$

Data Zoom 14-1

Wells in 1 Mile Radius from Skelly Unit 715

API#	Operator	County	Legal	Lease	Well#	Date Issued	Permitted Depth	Permit TVD	Images	Doc	Total Depth	Well Type	Well Status
30-015-38054	COG OPERATING LLC	EDDY	S:21, T:17S, R:31E	SKELLY UNIT	704	7/23/2010	6,900		No	link	6,900	PO	Active
30-015-37981	COG OPERATING LLC	EDDY	S:21, T:17S, R:31E	SKELLY UNIT	700	7/1/2010	6,900		No	link	6,900	PO	Active
30-015-37969	COG OPERATING LLC	EDDY	S:21, T:17S, R:31E	SKELLY UNIT	710	6/16/2010	6,600		Yes	link	6,600	PO	Active
30-015-37882	COG OPERATING LLC	EDDY	S:21, T:17S, R:31E	SKELLY UNIT	718	5/27/2010	6,700		Yes	link	6,700	PO	Active Permit
30-015-37883	COG OPERATING LLC	EDDY	S:21, T:17S, R:31E	SKELLY UNIT	719	5/27/2010	6,800		Yes	link	6,800	PO	Active Permit
30-015-37884	COG OPERATING LLC	EDDY	S:22, T:17S, R:31E	SKELLY UNIT	743	5/27/2010	7,050		Yes	link	7,050	PO	Active Permit
30-015-37638	COG OPERATING LLC	EDDY	S:16, T:17S, R:31E	WILLOW STATE	016	3/10/2010	6,700		Yes	link	6,700	PO	Active Permit
30-015-37517	COG OPERATING LLC	EDDY	S:15, T:17S, R:31E	SKELLY UNIT	849	1/6/2010	6,917	6,900	Yes	link	6,917	PO	Active Permit
30-015-37178	COG OPERATING LLC	EDDY	S:16, T:17S, R:31E	WILLOW STATE	013	7/24/2009	6,800		Yes	link	6,800	PO	Active Permit
30-015-37657	COG OPERATING LLC	EDDY	S:15, T:17S, R:31E	SKELLY UNIT	635	3/6/2009	6,708	6,700	Yes	link	6,708	PO	Active Permit
30-015-36981	COG OPERATING LLC	EDDY	S:22, T:17S, R:31E	SKELLY UNIT	628	2/27/2009	6,806	6,800	Yes	link	6,846	O	Active Permit
30-015-36968	COG OPERATING LLC	EDDY	S:22, T:17S, R:31E	SKELLY UNIT	627	2/25/2009	6,800		Yes	link	6,815	O	Active Permit
30-015-36967	COG OPERATING LLC	EDDY	S:21, T:17S, R:31E	SKELLY UNIT	625	2/25/2009	6,800		Yes	link	6,804	O	Active Permit
30-015-37007	FOREST OIL CORPORATION	EDDY	S:21, T:17S, R:31E	SKELLY UNIT	505	2/25/2009	4,600		Yes	link	4,600	PO	Active Permit
30-015-36980	COG OPERATING LLC	EDDY	S:22, T:17S, R:31E	SKELLY UNIT	626	2/24/2009	6,800		Yes	link	6,840	O	Active Permit
30-015-37008	FOREST OIL CORPORATION	EDDY	S:21, T:17S, R:31E	SKELLY UNIT	503	2/24/2009	4,600		Yes	link	3,900	O	Active Permit
30-015-37006	FOREST OIL CORPORATION	EDDY	S:21, T:17S, R:31E	SKELLY UNIT	502	2/23/2009	4,600		Yes	link	3,900	O	Active Permit
30-015-36764	COG OPERATING LLC	EDDY	S:21, T:17S, R:31E	SKELLY UNIT	607	11/4/2008	6,400		Yes	link	6,811	O	Active Permit
30-015-36765	COG OPERATING LLC	EDDY	S:21, T:17S, R:31E	SKELLY UNIT	606	11/4/2008	6,400		Yes	link	6,813	O	Active Permit
30-015-36766	COG OPERATING LLC	EDDY	S:22, T:17S, R:31E	SKELLY UNIT	608	11/4/2008	6,500		Yes	link	6,723	O	Active Permit
30-015-36886	COG OPERATING LLC	EDDY	S:22, T:17S, R:31E	SKELLY UNIT	609	11/4/2008	6,500		Yes	link	6,802	O	Active Permit
30-015-36888	COG OPERATING LLC	EDDY	S:22, T:17S, R:31E	SKELLY UNIT	610	11/4/2008	6,500		Yes	link	6,935	O	Active Permit
	COG												

30-015-36470	OPERATING LLC AGENT or COG OPERATING LLC	EDDY	S:21, T:17S, R:31E	SKELLY UNIT	600	7/31/2008	6,550		Yes	link	6,568	O	Active Permit
30-015-36473	COG OPERATING LLC	EDDY	S:15, T:17S, R:31E	SKELLY UNIT	995	7/31/2008	6,450		Yes	link	6,450	PO	Active Permit
30-015-36681	COG OPERATING LLC	EDDY	S:15, T:17S, R:31E	SKELLY UNIT	998	7/31/2008	6,600		Yes	link	6,593	O	Active Permit
30-015-36680	COG OPERATING LLC	EDDY	S:22, T:17S, R:31E	SKELLY UNIT	988	7/31/2008	6,600		Yes	link	6,716	O	Active Permit
30-015-36454	COG OPERATING LLC	EDDY	S:22, T:17S, R:31E	SKELLY UNIT	985	7/25/2008	6,600		Yes	link	6,530	O	Active Permit
30-015-36446	COG OPERATING LLC	EDDY	S:22, T:17S, R:31E	SKELLY UNIT	986	7/25/2008	6,600		Yes	link	6,625	O	Active Permit
30-015-36497	COG OPERATING LLC	EDDY	S:22, T:17S, R:31E	SKELLY UNIT	987	7/24/2008	6,600		Yes	link	6,600	PO	Active Permit
30-015-36475	COG OPERATING LLC	EDDY	S:21, T:17S, R:31E	SKELLY UNIT	999	7/23/2008	6,450		Yes	link	6,500	O	Active Permit
30-015-36596	COG OPERATING LLC	EDDY	S:21, T:17S, R:31E	SKELLY UNIT	602	7/22/2008	6,700		Yes	link	6,677	O	Active Permit
30-015-36423	FOREST OIL CORPORATION	EDDY	S:16, T:17S, R:31E	STATE B	13	7/18/2008	4,100		Yes	link	4,100	PI	Active Permit
30-015-36445	COG OPERATING LLC	EDDY	S:15, T:17S, R:31E	SKELLY UNIT	604	7/18/2008	6,450		Yes	link	6,512	O	Active Permit
30-015-36351	COG OPERATING LLC	EDDY	S:16, T:17S, R:31E	WILLOW STATE	009	6/4/2008			Yes	link	6,498	O	Active Permit
30-015-36256	FOREST OIL CORPORATION	EDDY	S:16, T:17S, R:31E	FOC B STATE	012	4/7/2008	4,100		Yes	link	4,030	O	Active Permit
30-015-36254	FOREST OIL CORPORATION	EDDY	S:16, T:17S, R:31E	FOC B STATE	10	4/7/2008	4,100		Yes	link	4,075	O	Active Permit
30-015-36255	FOREST OIL CORPORATION	EDDY	S:16, T:17S, R:31E	FOC B STATE	011	4/7/2008	4,100		Yes	link	4,040	O	Active Permit
30-015-36283	CHEVRON U S A INC or CHEVRON USA INC	EDDY	S:21, T:17S, R:31E	SKELLY UNIT	973	4/1/2008	6,400		Yes	link	6,407	O	Active Permit
30-015-36184	CHEVRON USA, INC. or CHEVRON USA INC	EDDY	S:21, T:17S, R:31E	SKELLY UNIT	972	2/22/2008	6,400		Yes	link	6,415	O	Active Permit
30-015-36061	CHEVRON USA, INC. or CHEVRON USA INC	EDDY	S:22, T:17S, R:31E	SKELLY UNIT	977	1/17/2008	6,500		Yes	link	6,510	O	Active Permit
30-015-36062	CHEVRON USA, INC. or CHEVRON USA INC	EDDY	S:22, T:17S, R:31E	SKELLY UNIT	978	1/17/2008	6,500		Yes	link	6,500	PO	Active Permit
30-015-36063	CHEVRON USA, INC. or CHEVRON USA INC	EDDY	S:22, T:17S, R:31E	SKELLY UNIT	980	1/17/2008	6,500		Yes	link	6,500	PO	Active Permit

30-015-35969	CHEVRON USA, INC. or CHEVRON USA INC	EDDY	S:15, T:17S, R:31E	SKELLY UNIT	966	10/11/2007	6,500		Yes	link	6,615	O	Active Permit
30-015-34645	CHEVRON USA, INC.	EDDY	S:22, T:17S, R:31E	SKELLY UNIT	942	2/22/2006	5,500		No	link	6,500	O	Active Permit
30-015-34647	CHEVRON USA, INC.	EDDY	S:15, T:17S, R:31E	SKELLY UNIT	965	2/22/2006	3,849		No	link	5,370	O	Active Permit
30-015-34686	CHEVRON U S A INC	EDDY	S:15, T:17S, R:31E	SKELLY UNIT	964	2/22/2006	5,500		No	link	5,410	PO	Active Permit
30-015-34646	CHEVRON USA, INC.	EDDY	S:15, T:17S, R:31E	SKELLY UNIT	963	2/21/2006	5,500		No	link	5,500	PO	Active Permit
30-015-34559	MACK ENERGY CORPORATION or MACK ENERGY CORP	EDDY	S:16, T:17S, R:31E	WILLOW STATE	008	1/30/2006	6,800		No	link	6,310	O	Active Permit
30-015-32965	CHEVRON USA, INC. or CHEVRON U S A INC	EDDY	S:22, T:17S, R:31E	SKELLY UNIT	946	11/30/2004			No	link	5,430	O	Active
30-015-32968	CHEVRON USA, INC. or CHEVRON U S A INC	EDDY	S:15, T:17S, R:31E	SKELLY UNIT	949	11/30/2004			No	link	5,350	O	Active
30-015-32967	CHEVRON USA, INC. or CHEVRON U S A INC	EDDY	S:15, T:17S, R:31E	SKELLY UNIT	948	11/30/2004			No	link	5,350	O	Active
30-015-33089	MARBOB ENERGY CORPORATION or MARBOB ENERGY CORP	EDDY	S:16, T:17S, R:31E	OXY SPUMONI STATE	001	4/8/2004	9,850		Yes	link	12,200	G	Active
30-015-33089	MARBOB ENERGY CORP	EDDY	S:16, T:17S, R:31E	OXY SPUMONI STATE	001	3/31/2004			No	link	12,200	G	Active
30-015-33089	OXY USA WTP LIMITED PARTNERSHIP	EDDY	S:16, T:17S, R:31E	OXY SPUMONI STATE	001	11/1/2003	12,000		No	link	12,200	G	Active
30-015-32963	CHEVRON USA, INC. or CHEVRON USA INC	EDDY	S:22, T:17S, R:31E	SKELLY UNIT	944	8/21/2003	5,500		No	link	5,450	O	Active
30-015-32964	CHEVRON USA, INC. or CHEVRON USA INC	EDDY	S:22, T:17S, R:31E	SKELLY UNIT	945	8/21/2003	5,500		No	link	5,483	O	Active
30-015-32965	CHEVRON USA, INC. or CHEVRON USA INC	EDDY	S:22, T:17S, R:31E	SKELLY UNIT	946	8/21/2003	5,500		No	link	5,430	O	Active
	CHEVRON USA,												

30-015-32967	INC. or CHEVRON USA INC	EDDY	S:15, T:17S, R:31E	SKELLY UNIT	948	8/21/2003	5,500	No	link	5,350	O	Active
30-015-32968	CHEVRON USA, INC. or CHEVRON USA INC	EDDY	S:15, T:17S, R:31E	SKELLY UNIT	949	8/21/2003	5,500	No	link	5,350	O	Active
30-015-32963	CHEVRON USA, INC. or CHEVRON U S A INC	EDDY	S:22, T:17S, R:31E	SKELLY UNIT	944	7/31/2003		No	link	5,450	O	Active
30-015-32964	CHEVRON USA, INC. or CHEVRON U S A INC	EDDY	S:22, T:17S, R:31E	SKELLY UNIT	945	7/31/2003		No	link	5,483	O	Active
30-015-32874	THE WISER OIL CO	EDDY	S:16, T:17S, R:31E	STATE "B"	5	7/16/2003	3,800	No	link	3,900	O	Active
30-015-32874	WISER OIL CO (THE)	EDDY	S:16, T:17S, R:31E	STATE B	005	6/30/2003		No	link	3,900	O	Active
30-015-32895	CHEVRON USA, INC. or CHEVRON USA INC	EDDY	S:21, T:17S, R:31E	SKELLY UNIT	952	6/24/2003	11,800	No	link	11,850	O	Active
30-015-32844	MACK ENERGY CORPORATION or MACK ENERGY CORP	EDDY	S:16, T:17S, R:31E	WILLOW STATE	4	6/15/2003	6,400	No	link	5,405	O	Active
30-015-32844	MACK ENERGY CORP	EDDY	S:16, T:17S, R:31E	WILLOW STATE	004	5/31/2003		No	link	5,405	O	Active
30-015-32895	CHEVRON USA, INC. or CHEVRON U S A INC	EDDY	S:21, T:17S, R:31E	SKELLY UNIT	952	5/31/2003		No	link	11,850	O	Active
30-015-32664	MACK ENERGY CORPORATION or MACK ENERGY CORP	EDDY	S:16, T:17S, R:31E	WILLOW STATE	002	3/3/2003	6,400	No	link	6,505	O	Active
30-015-32664	MACK ENERGY CORP	EDDY	S:16, T:17S, R:31E	WILLOW STATE	002	2/28/2003		No	link	6,505	O	Active
30-015-32595	CHEVRON USA, INC. or CHEVRON USA INC	EDDY	S:21, T:17S, R:31E	SKELLY UNIT	936	1/16/2003	5,500	No	link	5,265	O	Active
30-015-32596	CHEVRON USA, INC. or CHEVRON USA INC	EDDY	S:21, T:17S, R:31E	SKELLY UNIT	937	1/16/2003	5,500	No	link	5,305	O	Active
30-015-32597	CHEVRON USA, INC. or CHEVRON USA INC	EDDY	S:21, T:17S, R:31E	SKELLY UNIT	938	1/16/2003	5,500	No	link	5,410	O	Active
	CHEVRON USA,											

30-015-32598	INC. or CHEVRON USA INC	EDDY	S:21, T:17S, R:31E	SKELLY UNIT	939	1/16/2003	5,500		No	link	5,360	O	Active
30-015-32599	CHEVRON USA, INC. or CHEVRON USA INC	EDDY	S:22, T:17S, R:31E	SKELLY UNIT	940	1/16/2003	5,500		No	link	5,427	O	Active
30-015-32600	CHEVRON USA, INC. or CHEVRON USA INC	EDDY	S:22, T:17S, R:31E	SKELLY UNIT	941	1/16/2003	5,500		No	link	5,478	O	Active
30-015-05173	WISER OIL CO (THE)	EDDY	S:16, T:17S, R:31E	STATE B	004	1/1/2003	0		No	link	3,782	O	Shut-in
30-015-05169	WISER OIL CO (THE)	EDDY	S:16, T:17S, R:31E	STATE A	002	1/1/2003	0		No	link	3,585	O	Active
30-015-05171	WISER OIL CO (THE)	EDDY	S:16, T:17S, R:31E	STATE B	002	1/1/2003	0		No	link	0	O	Temporarily Abandoned
30-015-05172	WISER OIL CO (THE)	EDDY	S:16, T:17S, R:31E	STATE B	003	1/1/2003	0		No	link	0	O	Shut-in
30-015-32598	CHEVRON USA, INC. or CHEVRON U S A INC	EDDY	S:21, T:17S, R:31E	SKELLY UNIT	939	12/31/2002			No	link	5,360	O	Active
30-015-32595	CHEVRON USA, INC. or CHEVRON U S A INC	EDDY	S:21, T:17S, R:31E	SKELLY UNIT	936	12/31/2002			No	link	5,265	O	Active
30-015-32596	CHEVRON USA, INC. or CHEVRON U S A INC	EDDY	S:21, T:17S, R:31E	SKELLY UNIT	937	12/31/2002			No	link	5,305	O	Active
30-015-32597	CHEVRON USA, INC. or CHEVRON U S A INC	EDDY	S:21, T:17S, R:31E	SKELLY UNIT	938	12/31/2002			No	link	5,410	O	Active
30-015-32599	CHEVRON USA, INC. or CHEVRON U S A INC	EDDY	S:22, T:17S, R:31E	SKELLY UNIT	940	12/31/2002			No	link	5,427	O	Active
30-015-32600	CHEVRON USA, INC. or CHEVRON U S A INC	EDDY	S:22, T:17S, R:31E	SKELLY UNIT	941	12/31/2002			No	link	5,478	O	Active
30-015-31823	CHEVRON USA, INC. or CHEVRON U S A INC	EDDY	S:21, T:17S, R:31E	SKELLY UNIT	915	10/31/2002			No	link	5,500	PO	Active Permit
30-015-32436	MACK ENERGY CORPORATION or MACK ENERGY CORP	EDDY	S:21, T:17S, R:31E	SKELLY UNIT	951	8/30/2002	12,200		No	link	12,000	G	Active
	MACK ENERGY												

30-015-32437	CORPORATION or MACK ENERGY CORP	EDDY	S:28, T:17S, R:31E	SKELLY UNIT	950	8/30/2002	12,200	No	link	12,095	G	Active
30-015-31494	CHEVRON USA, INC. or CHEVRON USA INC	EDDY	S:21, T:17S, R:31E	SKELLY UNIT	906	5/1/2002		No	link	5,700	O	Active
30-015-31663	CHEVRON USA, INC. or CHEVRON USA INC	EDDY	S:21, T:17S, R:31E	SKELLY UNIT	911	5/1/2002		No	link	5,500	O	Active
30-015-31739	CHEVRON USA, INC. or CHEVRON USA INC	EDDY	S:21, T:17S, R:31E	SKELLY UNIT	916	5/1/2002		No	link	5,500	O	Active
30-015-29326	CHEVRON USA, INC. or CHEVRON U S A INC	EDDY	S:21, T:17S, R:31E	SKELLY UNIT	901	5/1/2002		No	link	9,200	G	Pumping
30-015-29461	CHEVRON USA, INC. or CHEVRON U S A INC	EDDY	S:22, T:17S, R:31E	SKELLY UNIT	904	5/1/2002		No	link	9,200	O	Shut-in
30-015-31385	CHEVRON USA, INC. or CHEVRON U S A INC	EDDY	S:21, T:17S, R:31E	SKELLY UNIT	907	5/1/2002		No	link	5,400	O	Pumping
30-015-31664	CHEVRON USA, INC. or CHEVRON U S A INC	EDDY	S:21, T:17S, R:31E	SKELLY UNIT	912	5/1/2002		No	link	5,438	U	Pumping
30-015-31665	CHEVRON USA, INC. or CHEVRON U S A INC	EDDY	S:21, T:17S, R:31E	SKELLY UNIT	914	5/1/2002		No	link	5,400	U	Pumping
30-015-31666	CHEVRON USA, INC. or CHEVRON U S A INC	EDDY	S:21, T:17S, R:31E	SKELLY UNIT	930	5/1/2002		No	link	5,295	O	Pumping
30-015-31667	CHEVRON USA, INC. or CHEVRON U S A INC	EDDY	S:21, T:17S, R:31E	SKELLY UNIT	931	5/1/2002		No	link	5,370	O	Pumping
30-015-31976	CHEVRON USA, INC. or CHEVRON U S A INC	EDDY	S:21, T:17S, R:31E	SKELLY UNIT	934	5/1/2002		No	link	5,255	O	Active
30-015-31977	CHEVRON USA, INC. or CHEVRON U S A INC	EDDY	S:21, T:17S, R:31E	SKELLY UNIT	935	5/1/2002		No	link	5,446	O	Active
	CHEVRON USA,											

30-015-32206	INC. or CHEVRON U S A INC	EDDY	S:21, T:17S, R:31E	SKELLY UNIT	932	5/1/2002			No	link		O	Active
30-015-29461	CHEVRON USA, INC. or CHEVRON U S A INC	EDDY	S:22, T:17S, R:31E	SKELLY UNIT	904	4/30/2002			No	link	9,200	O	Shut-in
30-015-31494	CHEVRON USA, INC. or CHEVRON U S A INC	EDDY	S:21, T:17S, R:31E	SKELLY UNIT	906	4/30/2002			No	link	5,700	O	Active
30-015-31663	CHEVRON USA, INC. or CHEVRON U S A INC	EDDY	S:21, T:17S, R:31E	SKELLY UNIT	911	4/30/2002			No	link	5,500	O	Active
30-015-31739	CHEVRON USA, INC. or CHEVRON U S A INC	EDDY	S:21, T:17S, R:31E	SKELLY UNIT	916	4/30/2002			No	link	5,500	O	Active
30-015-32206	TEXACO EXPLORATION & PRODUCTION INC or TEXACO EXPLORATION & PRODUCTION INC.	EDDY	S:21, T:17S, R:31E	SKELLY UNIT	932	2/12/2002			No	link		O	Active
30-015-29390	MACK ENERGY CORP	EDDY	S:16, T:17S, R:31E	WILLOW STATE	002	9/5/2001			No	link		PO	Unknown
30-015-29568	MACK ENERGY CORP	EDDY	S:16, T:17S, R:31E	WILLOW STATE	004	9/5/2001			No	link		O	Active
30-015-31823	CHEVRON USA, INC. or CHEVRON USA INC	EDDY	S:21, T:17S, R:31E	SKELLY UNIT	915	6/4/2001	5,500		No	link	5,500	PO	Active Permit
30-015-29240	WISER OIL CO (THE)	EDDY	S:28, T:17S, R:31E	SKELLY UNIT	285	4/7/1998			No	link		PO	Unknown
30-015-05152	WISER OIL CO (THE)	EDDY	S:15, T:17S, R:31E	SKELLY UNIT	001	10/16/1997	0		No	link	3,692	G	Active
30-015-22261	WISER OIL CO (THE)	EDDY	S:15, T:17S, R:31E	SKELLY UNIT	127	10/16/1997	0		No	link	2,503	I	Injection Well
30-015-29762	WISER OIL CO (THE)	EDDY	S:22, T:17S, R:31E	SKELLY UNIT	213	7/29/1997			No	link	3,950	O	Pumping
30-015-05338	WISER OIL CO (THE)	EDDY	S:21, T:17S, R:31E	SKELLY UNIT	068	7/25/1997	0		No	link	3,510	I	Injection Well
30-015-05317	WISER OIL CO (THE)	EDDY	S:21, T:17S, R:31E	SKELLY UNIT	063	7/22/1997	0		No	link	3,571	I	Injection Well
30-015-04885	WISER OIL CO (THE)	EDDY	S:28, T:17S, R:31E	SKELLY UNIT	093	7/17/1997	0		No	link	3,685	I	Injection Well
30-015-05428	WISER OIL CO (THE)	EDDY	S:28, T:17S, R:31E	SKELLY UNIT	090	7/17/1997	0		No	link	3,630	O	Injection Well
	WISER OIL CO			SKELLY									

30-015-29496	(THE)	EDDY	S:28, T:17S, R:31E	UNIT	301	7/16/1997			No	link	3,950	I	Injection Well
30-015-05318	WISER OIL CO (THE)	EDDY	S:21, T:17S, R:31E	SKELLY UNIT	060	7/10/1997	0		No	link	0	I	Injection Well
30-015-05316	WISER OIL CO (THE)	EDDY	S:21, T:17S, R:31E	SKELLY UNIT	062	7/3/1997	0		No	link	3,555	I	Injection Well
30-015-29712	WISER OIL CO (THE)	EDDY	S:28, T:17S, R:31E	SKELLY UNIT	302	7/3/1997			No	link	3,800	O	Pumping
30-015-05342	WISER OIL CO (THE)	EDDY	S:21, T:17S, R:31E	SKELLY UNIT	065	6/30/1997	99,999		No	link	99,999	I	Injection Well
30-015-05315	WISER OIL CO (THE)	EDDY	S:21, T:17S, R:31E	SKELLY UNIT	061	6/23/1997	0		No	link	0	I	Injection Well
30-015-05175	WISER OIL CO (THE)	EDDY	S:16, T:17S, R:31E	STATE AZ	002	5/27/1997	0		No	link	0	O	Pumping
30-015-29606	MACK ENERGY CORP	EDDY	S:16, T:17S, R:31E	WILLOW STATE	003	5/14/1997			No	link	5,507	O	Pumping
30-015-05163	WISER OIL CO (THE)	EDDY	S:16, T:17S, R:31E	STATE AZ	001	5/1/1997	0		No	link	3,547	O	Pumping
30-015-05341	WISER OIL CO (THE)	EDDY	S:21, T:17S, R:31E	SKELLY UNIT	066	4/28/1997	0		No	link	0	I	Injection Well
30-015-05320	WISER OIL CO (THE)	EDDY	S:21, T:17S, R:31E	SKELLY UNIT	059	4/17/1997	0		No	link	3,654	I	Injection Well
30-015-05426	WISER OIL CO (THE)	EDDY	S:28, T:17S, R:31E	SKELLY UNIT	088	4/17/1997	0		No	link	3,724	I	Injection Well
30-015-04884	WISER OIL CO (THE)	EDDY	S:28, T:17S, R:31E	SKELLY UNIT	094	4/15/1997	0		No	link	0	I	Injection Well
30-015-05432	WISER OIL CO (THE)	EDDY	S:28, T:17S, R:31E	SKELLY UNIT	100	4/15/1997			No	link		I	Injection Well
30-015-05420	WISER OIL CO (THE)	EDDY	S:27, T:17S, R:31E	SKELLY UNIT	087	4/14/1997	0		No	link	3,560	PI	Injection Well
30-015-10500	WISER OIL CO (THE)	EDDY	S:22, T:17S, R:31E	SKELLY UNIT	043	4/11/1997	0		No	link	0	G	Active
30-015-05421	WISER OIL CO (THE)	EDDY	S:27, T:17S, R:31E	SKELLY UNIT	086	3/28/1997	0		No	link	0	I	Injection Well
30-015-20410	WISER OIL CO (THE)	EDDY	S:27, T:17S, R:31E	SKELLY UNIT	107	3/27/1997	0		No	link	3,860	I	Injection Well
30-015-05151	WISER OIL CO (THE)	EDDY	S:15, T:17S, R:31E	SKELLY UNIT	029	3/19/1997	0		No	link	3,717	G	Active
30-015-05353	WISER OIL CO (THE)	EDDY	S:22, T:17S, R:31E	SKELLY UNIT	057	3/8/1997	0		No	link	0	I	Injection Well
30-015-05358	WISER OIL CO (THE)	EDDY	S:22, T:17S, R:31E	SKELLY UNIT	101	3/3/1997	0		No	link	3,725	I	Injection Well
30-015-05349	WISER OIL CO (THE)	EDDY	S:22, T:17S, R:31E	SKELLY UNIT	055	2/19/1997	0		No	link	3,690	I	Injection Well
30-015-05346	WISER OIL CO (THE)	EDDY	S:22, T:17S, R:31E	SKELLY UNIT	045	2/7/1997	0		No	link	3,804	I	Injection Well
30-015-29314	WISER OIL CO (THE)	EDDY	S:28, T:17S, R:31E	SKELLY UNIT	284	12/20/1996			No	link	4,025	O	Active
30-015-29239	WISER OIL CO (THE)	EDDY	S:28, T:17S, R:31E	SKELLY UNIT	273	10/23/1996			No	link	3,950	O	Pumping

30-015-29225	WISER OIL CO (THE)	EDDY	S:27, T:17S, R:31E	SKELLY UNIT	276	10/11/1996			No	link	3,950	O	Pumping
30-015-29226	WISER OIL CO (THE)	EDDY	S:27, T:17S, R:31E	SKELLY UNIT	278	10/11/1996			No	link	4,100	O	Active
30-015-29227	WISER OIL CO (THE)	EDDY	S:28, T:17S, R:31E	SKELLY UNIT	283	10/11/1996			No	link	4,000	O	Active
30-015-29208	WISER OIL CO (THE)	EDDY	S:22, T:17S, R:31E	SKELLY UNIT	224	10/4/1996			No	link	4,000	O	Shut-in
30-015-29209	WISER OIL CO (THE)	EDDY	S:27, T:17S, R:31E	SKELLY UNIT	265	10/4/1996			No	link	3,950	O	Active
30-015-29210	WISER OIL CO (THE)	EDDY	S:28, T:17S, R:31E	SKELLY UNIT	274	10/4/1996			No	link	3,950	O	Pumping
30-015-29181	WISER OIL CO (THE)	EDDY	S:21, T:17S, R:31E	SKELLY UNIT	233	9/24/1996			No	link	3,900	O	Pumping
30-015-29184	WISER OIL CO (THE)	EDDY	S:27, T:17S, R:31E	SKELLY UNIT	263	9/24/1996			No	link	3,900	O	Pumping
30-015-29092	WISER OIL CO (THE)	EDDY	S:15, T:17S, R:31E	SKELLY UNIT	211	8/7/1996	4,800		No	link	4,000	O	Pumping
30-015-29092	WISER OIL CO (THE)	EDDY	S:15, T:17S, R:31E	SKELLY UNIT	211	7/31/1996			No	link	4,000	O	Pumping
30-015-29063	WISER OIL CO (THE)	EDDY	S:21, T:17S, R:31E	SKELLY UNIT	246	7/25/1996			No	link	3,950	O	Pumping
30-015-29064	WISER OIL CO (THE)	EDDY	S:28, T:17S, R:31E	SKELLY UNIT	272	7/25/1996			No	link	3,987	O	Pumping
30-015-29031	WISER OIL CO (THE)	EDDY	S:22, T:17S, R:31E	SKELLY UNIT	212	7/2/1996			No	link	4,060	O	Pumping
30-015-29013	WISER OIL CO (THE)	EDDY	S:15, T:17S, R:31E	SKELLY UNIT	198	6/21/1996			No	link	4,000	O	Pumping
30-015-28998	WISER OIL CO (THE)	EDDY	S:15, T:17S, R:31E	SKELLY UNIT	200	6/5/1996			No	link	4,000	O	Pumping
30-015-28999	WISER OIL CO (THE)	EDDY	S:27, T:17S, R:31E	SKELLY UNIT	264	6/5/1996			No	link	3,900	O	Shut-in
30-015-28964	WISER OIL CO (THE)	EDDY	S:21, T:17S, R:31E	SKELLY UNIT	223	5/20/1996	4,800		No	link	3,982	O	Pumping
30-015-28972	WISER OIL CO (THE)	EDDY	S:15, T:17S, R:31E	SKELLY UNIT	199	5/9/1996			No	link	4,000	O	Pumping
30-015-28973	WISER OIL CO (THE)	EDDY	S:22, T:17S, R:31E	SKELLY UNIT	225	5/9/1996			No	link	4,000	O	Pumping
30-015-28975	WISER OIL CO (THE)	EDDY	S:28, T:17S, R:31E	SKELLY UNIT	259	5/9/1996			No	link	4,000	O	Pumping
30-015-28976	WISER OIL CO (THE)	EDDY	S:28, T:17S, R:31E	SKELLY UNIT	284Q	5/9/1996			No	link		O	Active
30-015-28967	WISER OIL CO (THE)	EDDY	S:27, T:17S, R:31E	SKELLY UNIT	277	5/2/1996			No	link	4,100	O	Pumping
30-015-28964	WISER OIL CO (THE)	EDDY	S:21, T:17S, R:31E	SKELLY UNIT	223	3/31/1996			No	link	3,982	O	Pumping
30-015-28892	WISER OIL CO (THE)	EDDY	S:21, T:17S, R:31E	SKELLY UNIT	220	3/27/1996			No	link	3,800	O	Pumping
30-015-28893	WISER OIL CO (THE)	EDDY	S:21, T:17S, R:31E	SKELLY UNIT	221	3/27/1996			No	link	3,850	O	Pumping

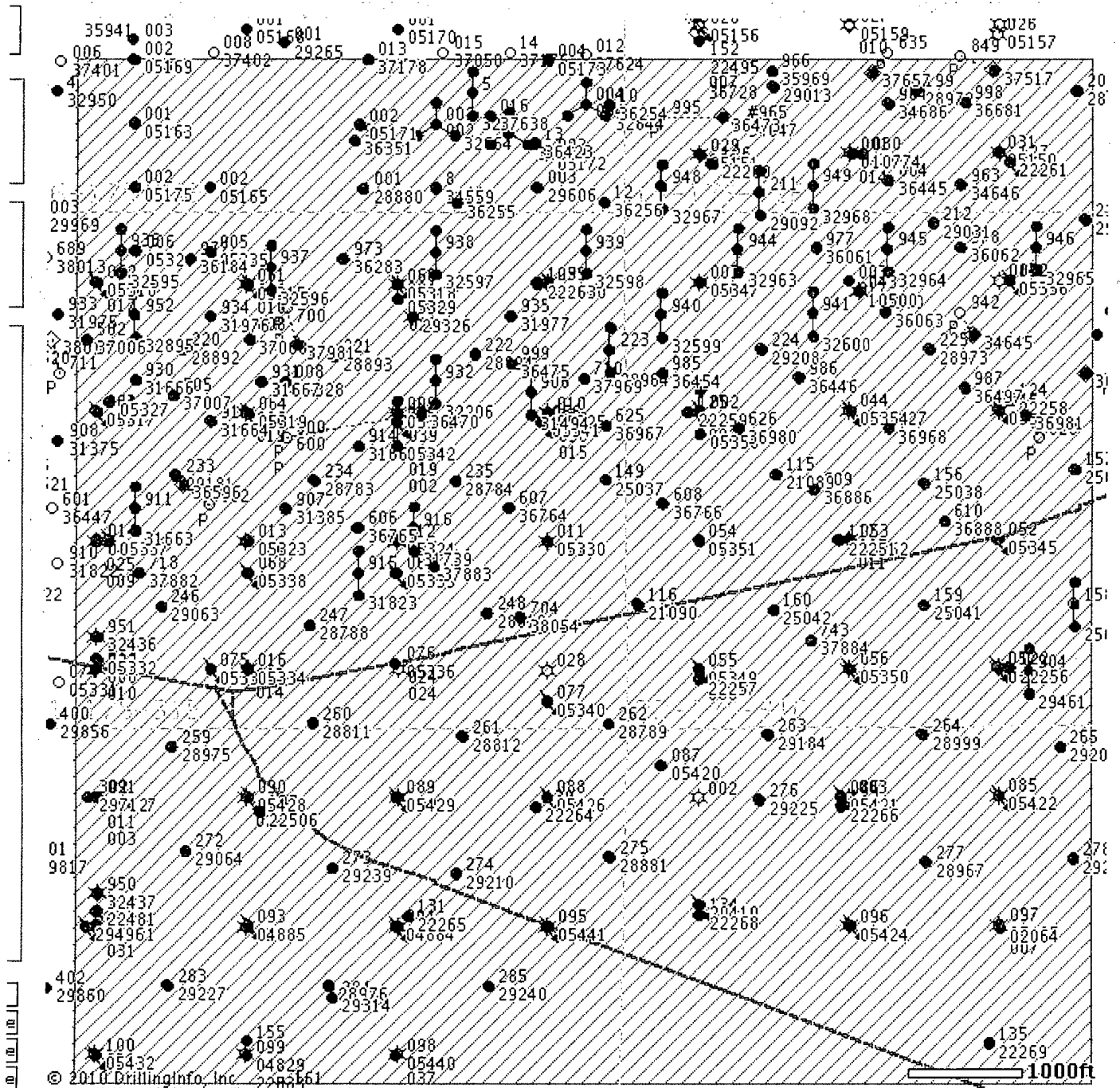
30-015-28894	WISER OIL CO (THE)	EDDY	S:21, T:17S, R:31E	SKELLY UNIT	222	3/27/1996			No	link	3,900	O	Active
30-015-28880	MACK ENERGY CORP	EDDY	S:16, T:17S, R:31E	WILLOW STATE	001	3/18/1996			No	link	8,990	O	Pumping
30-015-28881	WISER OIL CO (THE)	EDDY	S:28, T:17S, R:31E	SKELLY UNIT	275	3/13/1996			No	link	4,000	O	Pumping
30-015-28810	WISER OIL CO (THE)	EDDY	S:21, T:17S, R:31E	SKELLY UNIT	248	1/29/1996			No	link	3,950	O	Pumping
30-015-28811	WISER OIL CO (THE)	EDDY	S:21, T:17S, R:31E	SKELLY UNIT	260	1/29/1996			No	link	3,950	O	Pumping
30-015-28812	WISER OIL CO (THE)	EDDY	S:28, T:17S, R:31E	SKELLY UNIT	261	1/29/1996			No	link	3,950	O	Pumping
30-015-28783	WISER OIL CO (THE)	EDDY	S:21, T:17S, R:31E	SKELLY UNIT	234	1/17/1996			No	link	3,950	O	Pumping
30-015-28784	WISER OIL CO (THE)	EDDY	S:21, T:17S, R:31E	SKELLY UNIT	235	1/17/1996			No	link	3,950	O	Pumping
30-015-28788	WISER OIL CO (THE)	EDDY	S:21, T:17S, R:31E	SKELLY UNIT	247	1/17/1996			No	link	3,950	O	Active
30-015-28789	WISER OIL CO (THE)	EDDY	S:21, T:17S, R:31E	SKELLY UNIT	262	1/17/1996			No	link	3,950	O	Pumping
30-015-05150	WISER OIL CO (THE)	EDDY	S:15, T:17S, R:31E	SKELLY UNIT	031	9/1/1995	0		No	link	3,800	O	Shut-in
30-015-05319	WISER OIL CO (THE)	EDDY	S:21, T:17S, R:31E	SKELLY UNIT	064	9/1/1995	0		No	link	3,586	I	Injection Well
30-015-05321	WISER OIL CO (THE)	EDDY	S:21, T:17S, R:31E	SKELLY UNIT	009	9/1/1995	0		No	link	0	O	Pumping
30-015-05322	WISER OIL CO (THE)	EDDY	S:21, T:17S, R:31E	SKELLY UNIT	014	9/1/1995	0		No	link	0	O	Active
30-015-05323	WISER OIL CO (THE)	EDDY	S:21, T:17S, R:31E	SKELLY UNIT	013	9/1/1995	0		No	link	0	O	Active
30-015-05324	WISER OIL CO (THE)	EDDY	S:21, T:17S, R:31E	SKELLY UNIT	012	9/1/1995	0		No	link	2,235	G	Active
30-015-05325	WISER OIL CO (THE)	EDDY	S:21, T:17S, R:31E	SKELLY UNIT	010	9/1/1995	0		No	link	2,247	G	Active
30-015-05326	WISER OIL CO (THE)	EDDY	S:21, T:17S, R:31E	SKELLY UNIT	006	9/1/1995	0		No	link	0	O	Active
30-015-05327	WISER OIL CO (THE)	EDDY	S:21, T:17S, R:31E	SKELLY UNIT	007	9/1/1995	0		No	link	0	O	Pumping
30-015-05328	WISER OIL CO (THE)	EDDY	S:21, T:17S, R:31E	SKELLY UNIT	008	9/1/1995	0		No	link	0	O	Active
30-015-05329	WISER OIL CO (THE)	EDDY	S:21, T:17S, R:31E	SKELLY UNIT	004	9/1/1995	0		No	link	0	O	Active
30-015-05330	WISER OIL CO (THE)	EDDY	S:21, T:17S, R:31E	SKELLY UNIT	011	9/1/1995	0		No	link	0	O	Shut-in
30-015-05332	WISER OIL CO (THE)	EDDY	S:21, T:17S, R:31E	SKELLY UNIT	015	9/1/1995	0		No	link	0	O	Pumping
30-015-05333	WISER OIL CO (THE)	EDDY	S:21, T:17S, R:31E	SKELLY UNIT	075	9/1/1995	0		No	link	0	I	Injection Well
30-015-05334	WISER OIL CO (THE)	EDDY	S:21, T:17S, R:31E	SKELLY UNIT	016	9/1/1995	0		No	link	2,250	G	Active

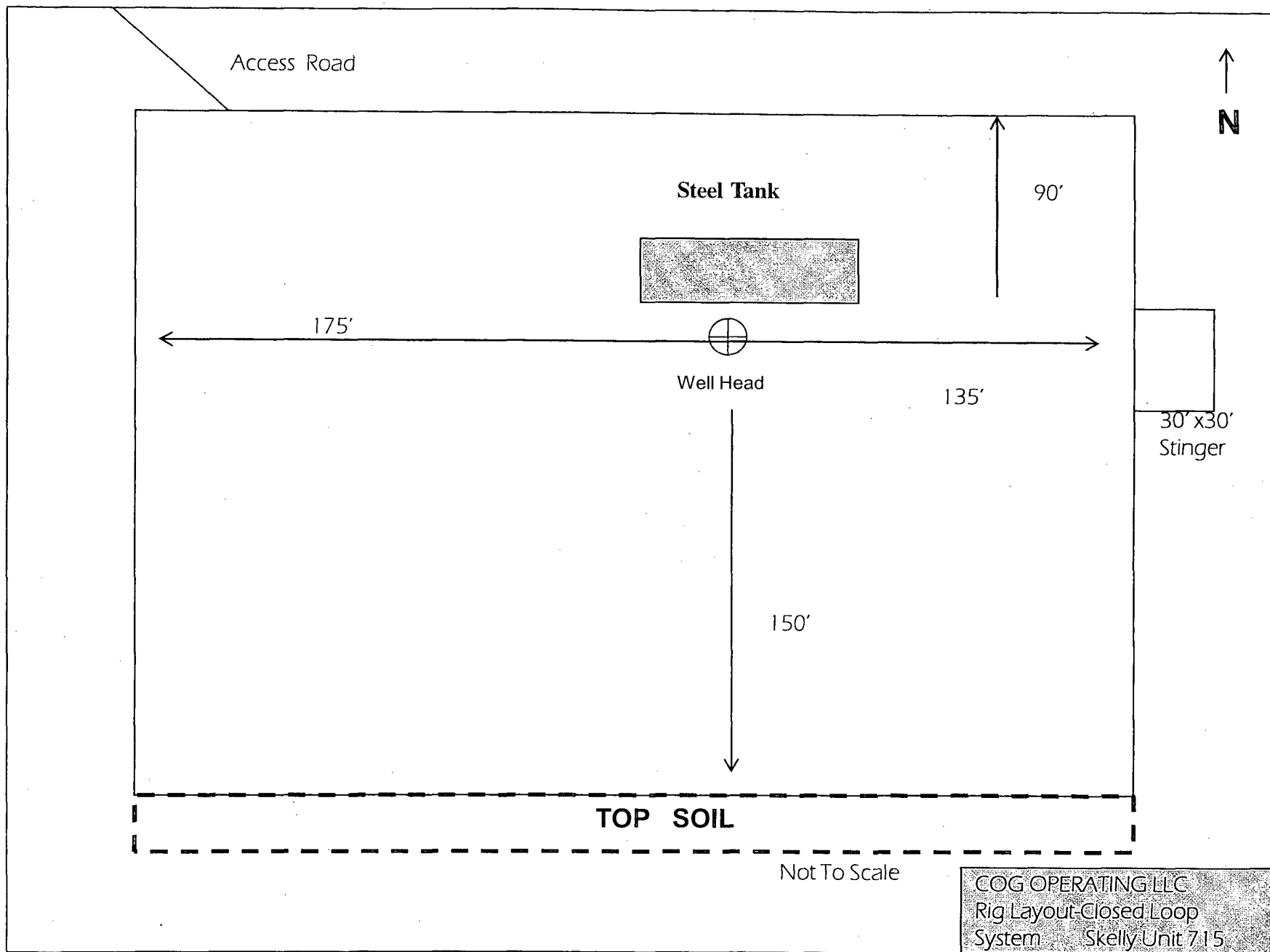
30-015-05335	WISER OIL CO (THE)	EDDY	S:21, T:17S, R:31E	SKELLY UNIT	005	9/1/1995	0	No	link	0	O	Pumping
30-015-05337	WISER OIL CO (THE)	EDDY	S:21, T:17S, R:31E	SKELLY UNIT	069	9/1/1995	0	No	link	3,230	I	Injection Well
30-015-05339	WISER OIL CO (THE)	EDDY	S:21, T:17S, R:31E	SKELLY UNIT	067	9/1/1995	0	No	link	0	I	Injection Well
30-015-05340	WISER OIL CO (THE)	EDDY	S:21, T:17S, R:31E	SKELLY UNIT	077	9/1/1995	0	No	link	3,650	I	Injection Well
30-015-05344	WISER OIL CO (THE)	EDDY	S:22, T:17S, R:31E	SKELLY UNIT	002	9/1/1995	0	No	link	0	O	Pumping
30-015-05345	WISER OIL CO (THE)	EDDY	S:22, T:17S, R:31E	SKELLY UNIT	052	9/1/1995	0	No	link	2,170	I	Injection Well
30-015-05347	WISER OIL CO (THE)	EDDY	S:22, T:17S, R:31E	SKELLY UNIT	003	9/1/1995	0	No	link	12,384	O	Active
30-015-05350	WISER OIL CO (THE)	EDDY	S:22, T:17S, R:31E	SKELLY UNIT	056	9/1/1995	0	No	link	3,709	I	Injection Well
30-015-05351	WISER OIL CO (THE)	EDDY	S:22, T:17S, R:31E	SKELLY UNIT	054	9/1/1995	0	No	link	3,800	PI	Injection Well
30-015-05352	WISER OIL CO (THE)	EDDY	S:22, T:17S, R:31E	SKELLY UNIT	053	9/1/1995	0	No	link	3,810	G	Active
30-015-05354	WISER OIL CO (THE)	EDDY	S:22, T:17S, R:31E	SKELLY UNIT	044	9/1/1995	0	No	link	3,804	I	Shut-in
30-015-05356	WISER OIL CO (THE)	EDDY	S:22, T:17S, R:31E	SKELLY UNIT	042	9/1/1995		No	link	2,165	I	Injection Well
30-015-05422	WISER OIL CO (THE)	EDDY	S:27, T:17S, R:31E	SKELLY UNIT	085	9/1/1995	0	No	link	3,803	I	Injection Well
30-015-05424	WISER OIL CO (THE)	EDDY	S:27, T:17S, R:31E	SKELLY UNIT	096	9/1/1995	0	No	link	0	I	Injection Well
30-015-05425	WISER OIL CO (THE)	EDDY	S:27, T:17S, R:31E	SKELLY UNIT	097	9/1/1995	0	No	link	0	O	Shut-in
30-015-05429	WISER OIL CO (THE)	EDDY	S:28, T:17S, R:31E	SKELLY UNIT	089	9/1/1995	0	No	link	3,670	I	Injection Well
30-015-05441	WISER OIL CO (THE)	EDDY	S:28, T:17S, R:31E	SKELLY UNIT	095	9/1/1995		No	link	3,783	I	Injection Well
30-015-10774	WISER OIL CO (THE)	EDDY	S:15, T:17S, R:31E	SKELLY UNIT	030	9/1/1995	0	No	link	3,906	G	Active
30-015-21089	WISER OIL CO (THE)	EDDY	S:22, T:17S, R:31E	SKELLY UNIT	115	9/1/1995		No	link	3,910	O	Temporarily Abandoned
30-015-21090	WISER OIL CO (THE)	EDDY	S:22, T:17S, R:31E	SKELLY UNIT	116	9/1/1995	0	No	link	4,000	O	Active
30-015-22251	WISER OIL CO (THE)	EDDY	S:22, T:17S, R:31E	SKELLY UNIT	117	9/1/1995	0	No	link	0	O	Pumping
30-015-22256	WISER OIL CO (THE)	EDDY	S:22, T:17S, R:31E	SKELLY UNIT	122	9/1/1995	0	No	link	2,600	O	Pumping
30-015-22257	WISER OIL CO (THE)	EDDY	S:22, T:17S, R:31E	SKELLY UNIT	123	9/1/1995	0	No	link	2,580	O	Shut-in
30-015-22258	WISER OIL CO (THE)	EDDY	S:22, T:17S, R:31E	SKELLY UNIT	124	9/1/1995	0	No	link	11,065	O	Active
30-015-22259	WISER OIL CO (THE)	EDDY	S:22, T:17S, R:31E	SKELLY UNIT	125	9/1/1995	0	No	link	2,500	O	Active

30-015-22260	WISER OIL CO (THE)	EDDY	S:15, T:17S, R:31E	SKELLY UNIT	126	9/1/1995	0	No	link	2,530	O	Active
30-015-22263	WISER OIL CO (THE)	EDDY	S:21, T:17S, R:31E	SKELLY UNIT	129	9/1/1995	0	No	link	0	O	Active
30-015-22264	WISER OIL CO (THE)	EDDY	S:28, T:17S, R:31E	SKELLY UNIT	130	9/1/1995	0	No	link	2,550	O	Active
30-015-22265	WISER OIL CO (THE)	EDDY	S:28, T:17S, R:31E	SKELLY UNIT	131	9/1/1995	0	No	link	2,600	O	Pumping
30-015-22266	WISER OIL CO (THE)	EDDY	S:27, T:17S, R:31E	SKELLY UNIT	132	9/1/1995	0	No	link	2,600	O	Pumping
30-015-22268	WISER OIL CO (THE)	EDDY	S:27, T:17S, R:31E	SKELLY UNIT	134	9/1/1995	0	No	link	2,650	O	Pumping
30-015-22269	WISER OIL CO (THE)	EDDY	S:27, T:17S, R:31E	SKELLY UNIT	135	9/1/1995	0	No	link	2,740	O	Pumping
30-015-22481	WISER OIL CO (THE)	EDDY	S:28, T:17S, R:31E	SKELLY UNIT	136	9/1/1995	0	No	link	2,550	O	Active
30-015-22506	WISER OIL CO (THE)	EDDY	S:28, T:17S, R:31E	SKELLY UNIT	137	9/1/1995	0	No	link	2,550	O	Active
30-015-25037	WISER OIL CO (THE)	EDDY	S:21, T:17S, R:31E	SKELLY UNIT	149	9/1/1995		No	link	3,900	PO	Active
30-015-25038	WISER OIL CO (THE)	EDDY	S:22, T:17S, R:31E	SKELLY UNIT	156	9/1/1995	0	No	link	3,685	O	Active
30-015-25039	WISER OIL CO (THE)	EDDY	S:22, T:17S, R:31E	SKELLY UNIT	157	9/1/1995		No	link	3,705	PO	Active
30-015-25041	WISER OIL CO (THE)	EDDY	S:22, T:17S, R:31E	SKELLY UNIT	159	9/1/1995		No	link	3,962	PO	Active
30-015-25042	WISER OIL CO (THE)	EDDY	S:22, T:17S, R:31E	SKELLY UNIT	160	9/1/1995		No	link	3,900	PO	Active
30-015-25040	WISER OIL CO (THE)	EDDY	S:22, T:17S, R:31E	SKELLY UNIT	158	8/31/1995		No	link	4,049	PO	Temporarily Abandoned
30-015-25040	WISER OIL CO (THE)	EDDY	S:22, T:17S, R:31E	SKELLY UNIT	158	10/3/1984	3,900	No	link	4,049	PO	Temporarily Abandoned
30-015-05342	WISER OIL CO (THE)	EDDY	S:21, T:17S, R:31E	SKELLY UNIT	065	1/1/1970	4,800	No	link	99,999	I	Injection Well
30-015-02064	STEVENS OPERATING CORPORATION or HANAGAN PETROLEUM CORP	EDDY	S:28, T:18S, R:28E	PRE-ONGARD WELL	004	1/1/1970		No	link		O	Active

Wells in 1 Mile Radius from Skelly Unit 715 - Change Title

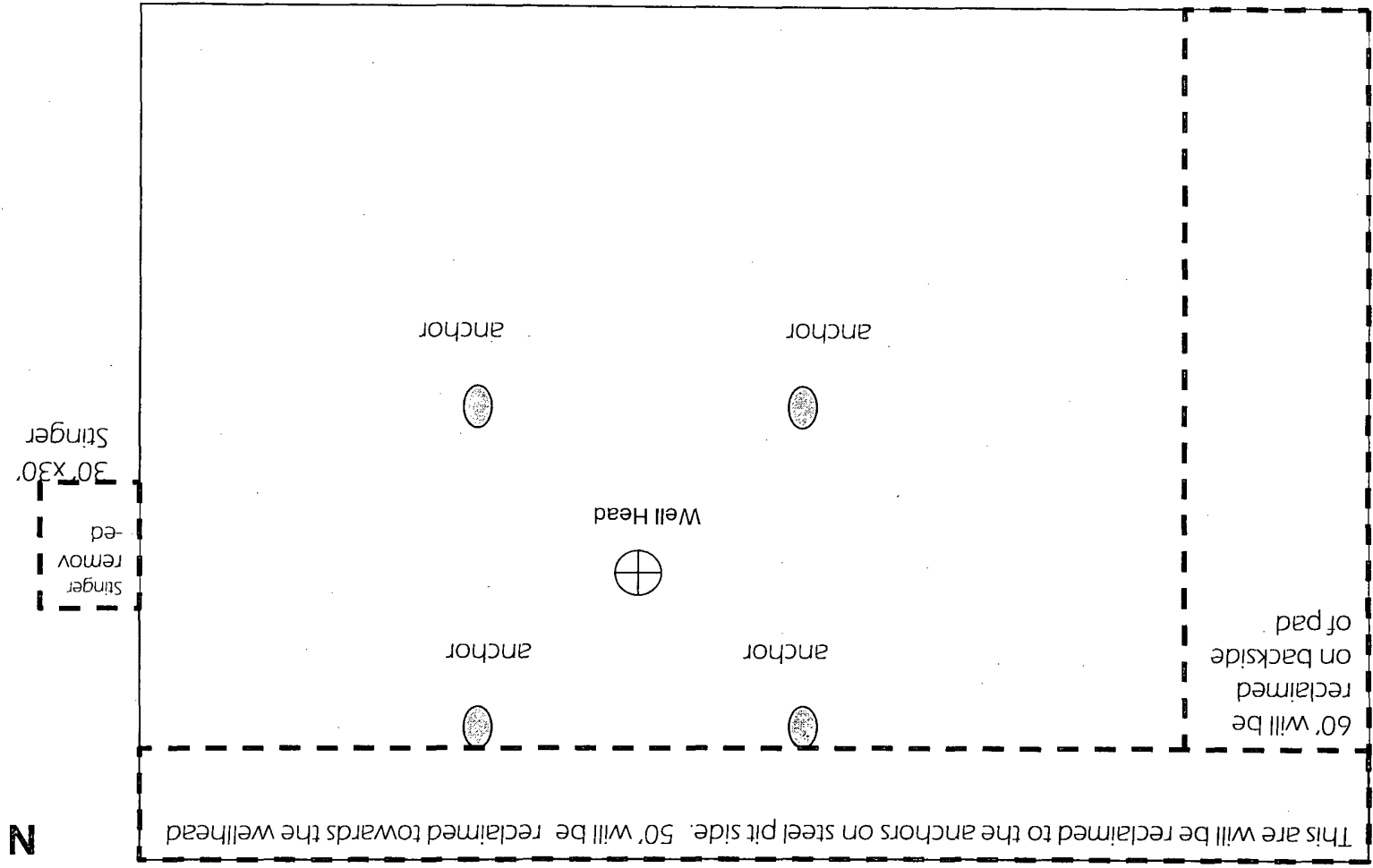
PDF Save
Map Image





COG OPERATING LLC
Rig Layout-Closed Loop
Interim reclamation plat
Skelly Unit 715

Not To Scale



30'x30'
Stinger
remov
-ed

N
↓

310

250

Closed Loop Operation & Maintenance Procedure

All drilling fluid circulated over shaker(s) with cuttings discharged into roll off container.

Fluid and fines below shaker(s) are circulated with transfer pump through centrifuge(s) or solids separator with cuttings and fines discharged into roll off container.

Fluid is continuously re-circulated through equipment with polymer added to aid separation of cutting fines.

Roll off containers are lined and de-watered with fluids re-circulated into system.

Additional tank is used to capture unused drilling fluid or cement returns from casing jobs.

This equipment will be maintained 24 hrs./day by solids control personnel and or rig crews that stay on location.

Cuttings will be hauled to either:

CRI (permit number R9166)

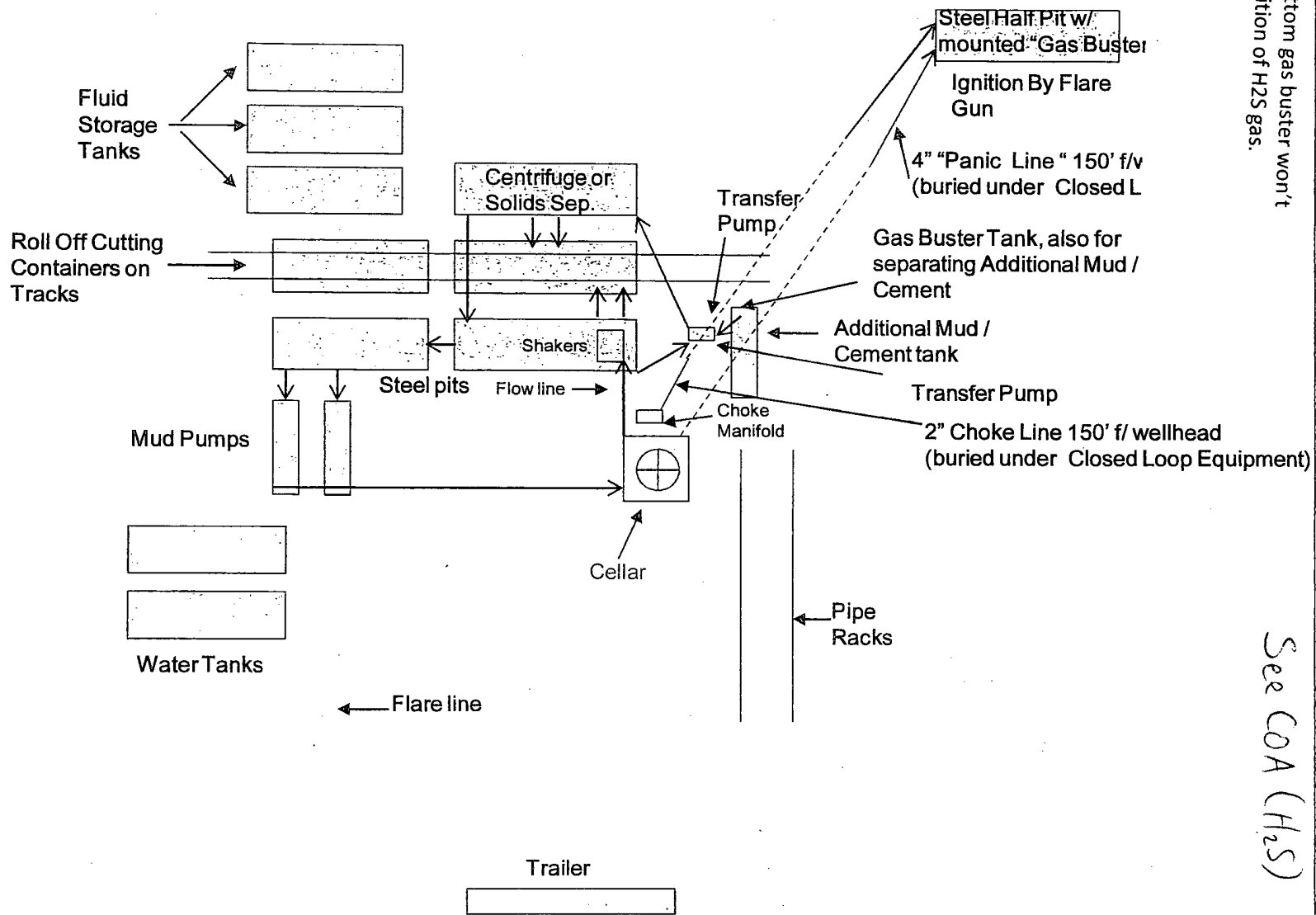
or

GMI (permit number 711-019-001)

dependent upon which rig is available to drill this well.

COG Operating LLC

Closed Loop Equipment Diagram



Open bottom gas buster won't allow ignition of H₂S gas.

See COA (H₂S)