

District I
1625 N. French Dr., Hobbs, NM 88240

District II
1301 W. Grand Avenue, Artesia, NM 88210

District III
1000 Rio Brazos Rd., Aztec, NM 87410

District IV
1220 S. St. Francis Dr., Santa Fe, NM 87505

State of New Mexico
Energy, Minerals & Natural Resources Department
OIL CONSERVATION DIVISION
1220 South St. Frances Dr.
Santa Fe, NM 87505

Form C-102
Revised October 15, 2009
Submit one copy to appropriate
District Office

☐ AMENDED REPORT

WELL LOCATION AND ACREAGE DEDICATION PLAT

1 API Number 30-015- 38050		2 Pool Code 96718		3 Pool Name LOCO HILLS; GLORIETA-YESO	
4 Property Code 37868		5 Property Name MIRANDA FEDERAL			6 Well Number 16
7 OGRID No 229137		8 Operator Name COG OPERATING LLC			9 Elevation 3696 8

10 Surface Location

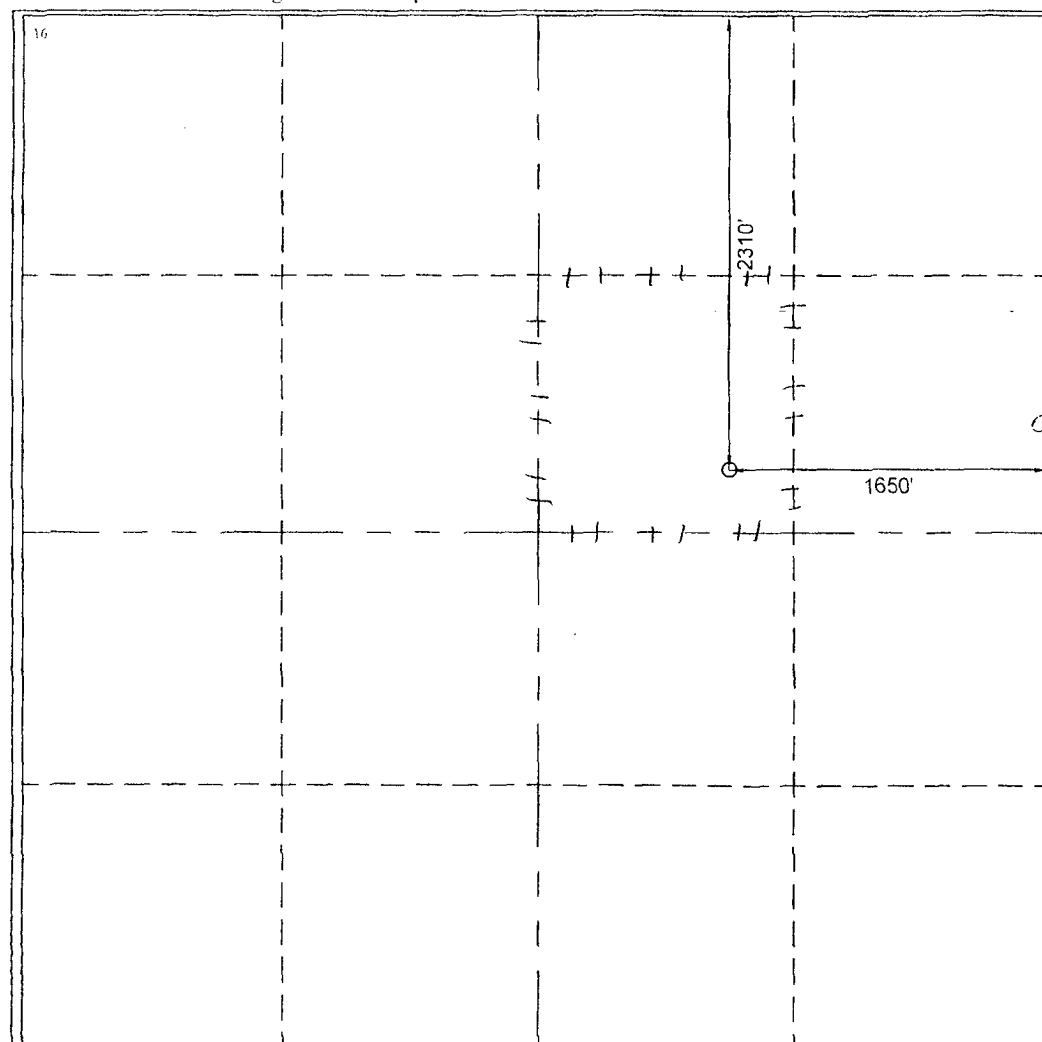
UL or lot	Section	Township	Range	Lot Idn	Feet from the	North/South line	Feet from the	East/West line	County
G	9	17 S	30 E		2310	NORTH	1650	EAST	EDDY

11 Bottom Hole Location If Different From Surface

UL or lot	Section	Township	Range	Lot Idn	Feet from the	North/South line	Feet from the	East/West line	County

12 Dedicated Acres 40	13 Joint or Infill	14 Consolidation Code	15 Order No
--------------------------	--------------------	-----------------------	-------------

No allowable will be assigned to this completion until all interests have been consolidated or a non-standard unit has been approved by the division



17 OPERATOR CERTIFICATION

I hereby certify that the information contained herein is true and complete to the best of my knowledge and belief, and that this organization either owns a working interest or unleased mineral interest in the land including the proposed bottom hole location or has a right to drill this well at this location pursuant to a contract with an owner of such a mineral or working interest, or to a voluntary pooling agreement or a compulsory pooling order heretofore enter by the division.

Robyn Odom 4/16/2010
Signature Date

Robyn Odom

Printed Name

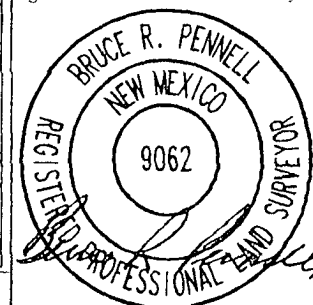
18 SURVEYOR CERTIFICATION

I hereby certify that the well location shown on this plat was plotted from field notes of actual surveys made by me or under my supervision, and that the same is true and correct to the best of my belief.

03/10/2010

Date of Survey

Signature and Seal of Professional Surveyor



Bruce R. Pennell
Certificate Number 9062

NAD27 GEOGRAPHIC COORDINATES		NAD27 SPC - NM EAST	
LAT. 32.84983	LONG. -103.97322	X = 610591 0	Y = 673067 9

COG