

MULTI-POINT SURFACE USE & OPERATIONS PLAN

BTA OIL PRODUCERS, LLC

Ogden #1H
1980' FNL & 1830' FEL
UL -G-, Sec. 29, T23S, R28E Surface
2310' FNL & 1650' FEL
UL -G-, Sec. 32, T23S, R28E Bottom
Eddy County, New Mexico

This plan is submitted with Form 3160-3, Application for Permit to Drill, covering the referenced well. The plan describes the location of the proposed project, proposed activities and operations plan, the magnitude of necessary surface disturbance, and the procedures to be followed in rehabilitating the surface after completion of the operation so that complete appraisal can be made concerning the environmental effects associated with the operations. **Note: We are proposing to add a horizontal leg to an existing wellbore.**

1. Existing Roads

- A. The well was staked by John West Surveying Company.
- B. Exhibit -B- is a topographic map showing the location of the proposed project as staked with existing roads and conditions within the one mile area. The existing location is approximately 1938 feet southwest from Loving, New Mexico as shown on Exhibit -C-.
- C. From the intersection of US Highway #285 and Co. Rd. 115 (El Lobo), go west on Co. Rd. 115 approximately 0.4 miles. Turn right and go north approximately 0.1 miles to the location as shown on Exhibit -C-.

2. Access Roads

- A. Our existing access road is shown on Exhibit -C-.

3. Location of Existing Wells

- A. All existing wells within ½ mile radius of our proposed well are shown on Exhibit -F-.

4. Location of Existing and/ or Proposed Facilities

- A. We will use the existing well pad and tank battery for all necessary production facilities.
- B. The well operates by means of an electric prime mover. Electric power poles and lines are in place.
- C. All flow lines will adhere to API standards.

MULTI-POINT SURFACE USE AND OPERATION PLAN

Ogden #1H
Page 2

- D. Additional facilities, if necessary for operations, will be applied for via Sundry notice with a schematic diagram prior to installation.
- E. All facilities are/will be painted a flat, nonreflective, earthtone color to match the standard environmental colors within six months of installation.

5. Location and Type of Water Supply

- A. Water for drilling and completion operations will either be purchased from commercial water stations in the area and trucked to the well site using the existing and proposed roads or transported from a pre-existing water well by plastic temporary "fas-line" laid on the surface alongside existing roads.

6. Source of Construction Materials

- A. No construction is necessary. As this is an addition of a horizontal leg to an existing wellbore, the drilling pad and access road are in place. No surface disturbance is anticipated.

7. Methods of Handling Waste Disposal

- A. This will be a closed loop system.
- B. Water produced during operations will be collected in tanks until hauled to an approved disposal system or a separate disposal application will be submitted to the BLM for appropriate approval.
- C. Oil and condensate produced during testing will be stored in test tanks until sold.
- D. Current laws and regulations pertaining to the disposal of human waste will be complied with.
- E. The supplier will pick up salts remaining after completion of well, including broken sacks.
- F. Trash, waste paper and garbage will be disposed of by hauling to an approved and available disposal. All waste material will be contained in a totally enclosed trash basket with a fine wire mesh, to prevent wind scattering during collection. The road and pad will be kept litter free.

8. Ancillary Facilities

- A. It is possible that a mobile home will be used at the well site during drilling operations.

9. Wellsite Layout

- A. Exhibit -D- shows the existing pad layout.
- B. Mud tanks in the active circulating system will be steel tanks.

Ogden #1H
Page 3

- A. Following drilling and/or completion operations, all equipment and material not needed for further operations will be removed. The location will be cleaned of all trash and junk to leave the well site as clean as possible.
- B. As this is an existing location, the pad area has already been contoured to the natural terrain. Topsoil was evenly distributed over the entire location.
- C. Upon cessation of production, all rehabilitation and/or vegetation requirements of the BLM will be complied with and will be accomplished as expeditiously as possible.
- D. Upon cessation of production all disturbed areas will be seeded on the contour at a depth of one-half inch using the following mixture:
 - 1 pound per acre Alkali Sacaton (*Sporobolus airoides*)
 - 5 pound per acre Four-wing Saltbush (*Atriplex canescens*)
- E. Seeding will be completed after September 15 and prior to November 15th before freeze up or as early as possible the following spring to take advantage of available ground moisture.
- F. The access road is on private/State surface.

A. The surface ownership is: BF&G Farms State of New Mexico
P. O. Box 1275
Loving, NM 88256

- B. We have reached an agreement with the private surface owner.
- C. The wellsite and access route are located to the west of South Culebra Bluff. The area is fairly flat with sandy loam soil underlain with caliche.
- D. There is no permanent or live water in the general proximity of the location.
- E. The southwest corner of the city principalty of Loving, NM is within one mile of the wellsite..
- F. Signs identifying and locating our well are at the wellsite and principle entrance.
- G. No archaeological survey has been conducted.

A. The field representative that is responsible for assuring compliance with the approved surface use plan is:

Drilling Manager: Mr. L. G. Johnson
Phone: 432/682-3753 (Office)
432/682-5149 (Home)
432/553-2756 (Mobile)

SURFACE USE PLAN SUMMARY

FOR

BTA OIL PRODUCERS, LLC

Ogden #1H

UL -G-, Sec. 29, T23S, R28E Surface

UL -G-, Sec. 32, T23S, R28E Bottom

Eddy County, New Mexico

LOCATED: Approximately 1938' Southwest from Loving, NM

FEDERAL LEASE NUMBER: NMNM 100335

SURFACE OWNERSHIP: BF&G Farms State of New Mexico
P. O. Box 1275
Loving, NM 88256

POOL: South Culebra Bluff (Bone Springs)

DEDICATED ACRES: 400 (project area)

EXHIBITS:

- A. BOP Schematic
- B. Topographic Vicinity Map
- C. Topographic Road Map
- D. Well Location Map
- E. Well Location and Acreage Plat (C-102)
- F. Area Location Map
- G. Directional Drilling Plan

OPERATOR CERTIFICATION

BTA OIL PRODUCERS, LLC

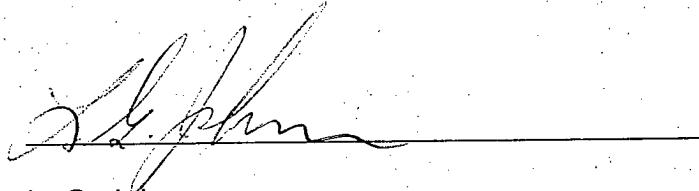
Ogden #1H

UL -G-, Sec. 29, T23S, R28E Surface

UL -G-, Sec. 32, T23S, R28E Bottom

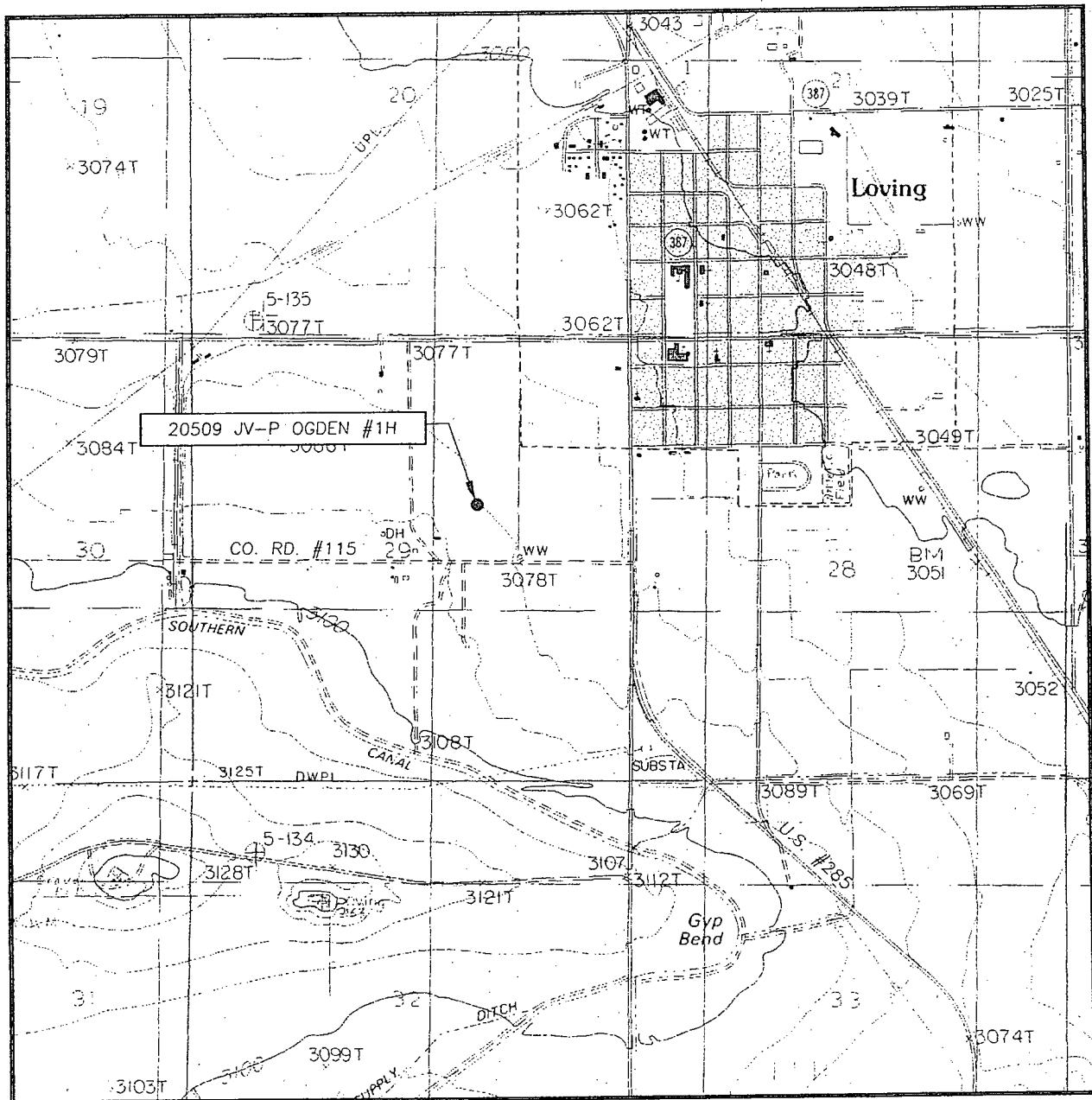
Eddy County, New Mexico

I hereby certify that I, or someone under my direct supervision, have inspected the project site and access route proposed herein; that I am familiar with the conditions that presently exist; that I have full knowledge of State and Federal laws applicable to this operation; that the statements made in this APD package are, to the best of my knowledge, true and correct; and that the work associated with the operations proposed herein will be performed in conformity with this APD package and the terms and conditions under which it is approved. I also certify that I, or the company I represent, am responsible for the operations conducted under this application. These statements are subject to the provisions of 18 USC 1001 for the filing of false statements. Executed this 29th day of May, 2009.



L. G. Johnson
Drilling Manager
BTA Oil Producers, LLC
104 S. Pecos
Midland, TX. 79701
(432) 682-3753

LOCATION VERIFICATION MAP



SCALE: 1" = 2000'

CONTOUR INTERVAL:
LOVING, N.M. - 10'

SEC. 29 TWP. 23-S RGE. 28-E

SURVEY N.M.P.M.

COUNTY EDDY STATE NEW MEXICO

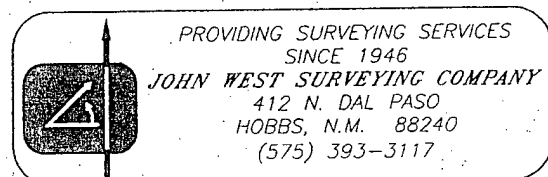
DESCRIPTION 1980' FNL & 1830' FEL

ELEVATION 3084'

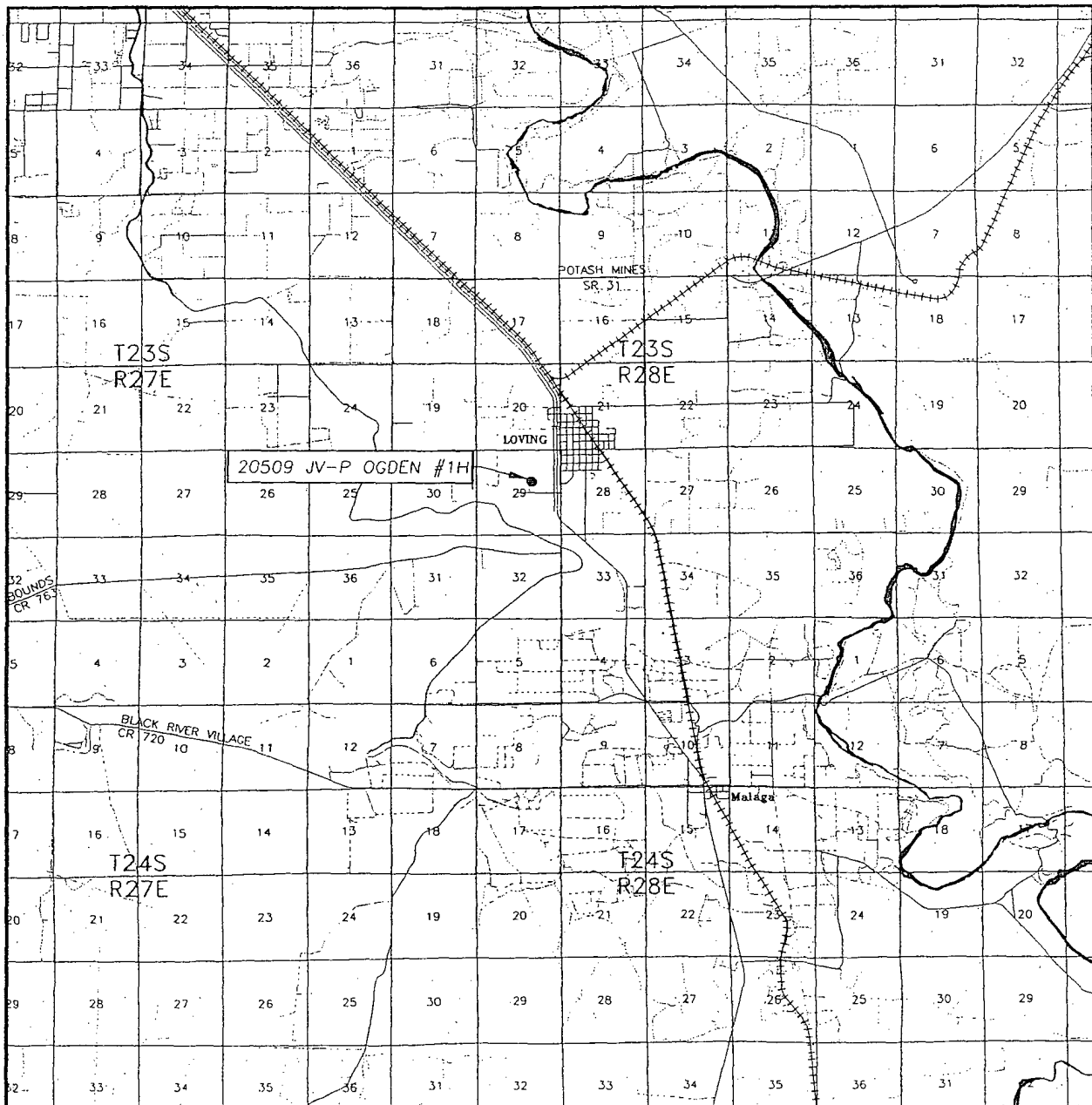
BT
OPERATOR OIL PRODUCERS

LEASE 20509 JV-P OGDEN

U.S.G.S. TOPOGRAPHIC MAP
LOVING, N.M.




VICINITY MAP



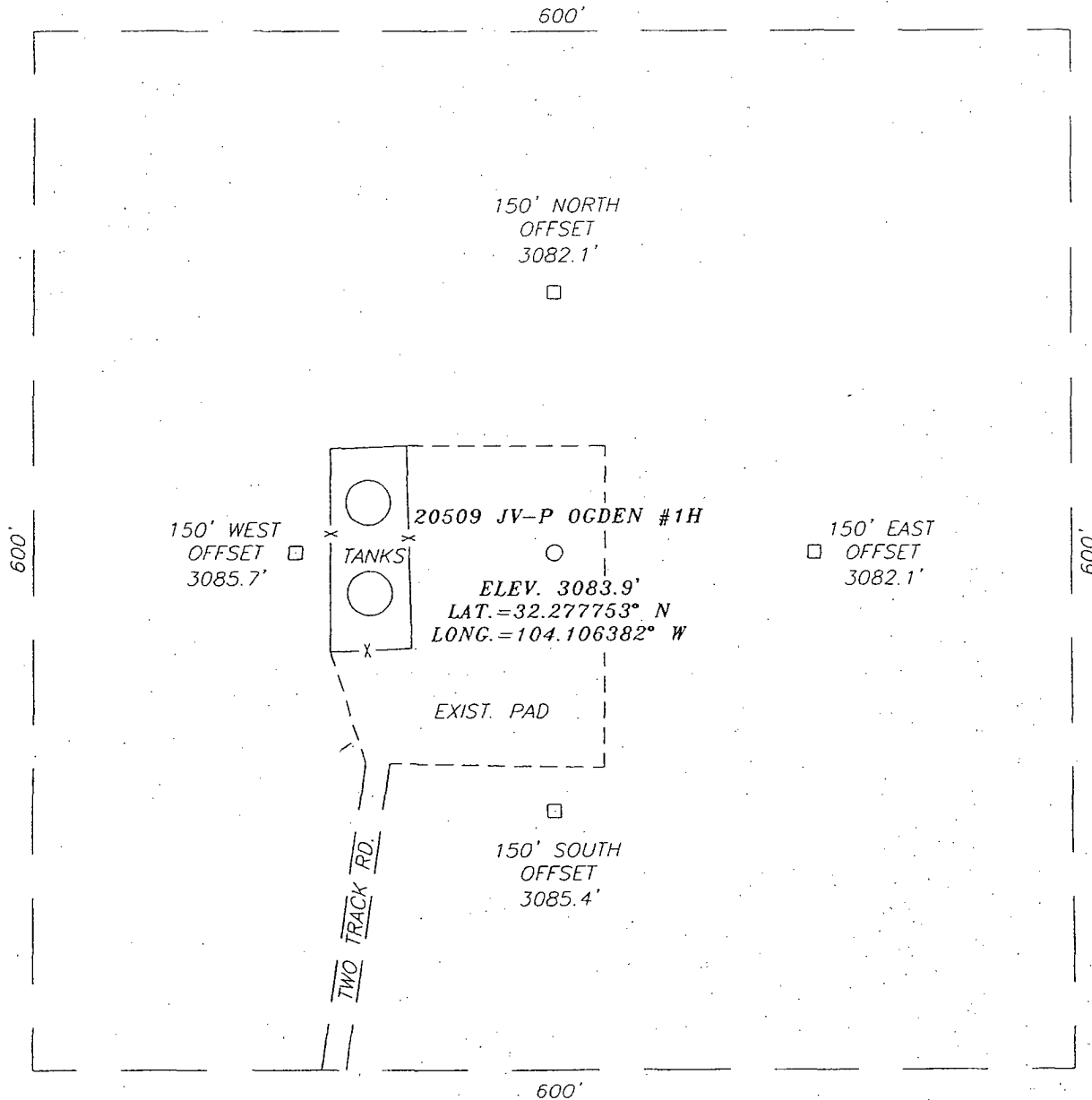
SCALE: 1" = 2 MILES

SEC. 29 TWP. 23-S RGE. 28-E
 SURVEY N.M.P.M.
 COUNTY EDDY STATE NEW MEXICO
 DESCRIPTION 1980' FNL & 1830' FEL
 ELEVATION 3084'
 OPERATOR BTA OIL PRODUCERS
 LEASE 20509 JV-P OGDEN



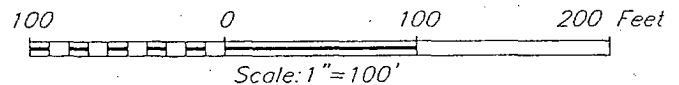
PROVIDING SURVEYING SERVICES
 SINCE 1946
JOHN WEST SURVEYING COMPANY
 412 N. DAL PASO
 HOBBS, N.M. 88240
 (575) 393-3117

SECTION 29, TOWNSHIP 23 SOUTH, RANGE 28 EAST, N.M.P.M.,
 EDDY COUNTY, NEW MEXICO



DIRECTIONS TO LOCATION

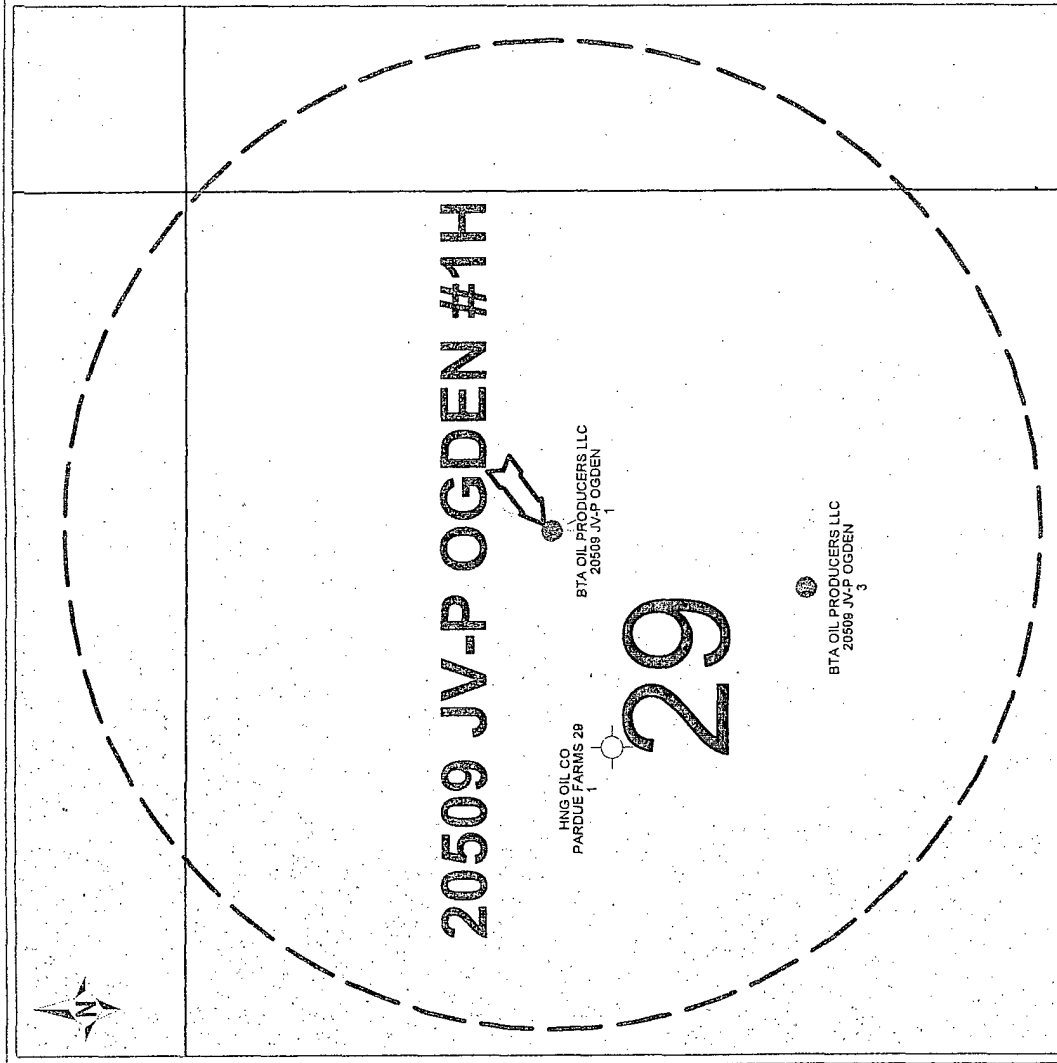
FROM THE INTERSECTION OF U.S. HWY. #285 & CO. RD. #115 (EL LOBO) GO WEST ON CO. RD. #115 APPROX. 0.4 MILES. TURN RIGHT AND GO NORTH APPROX. 0.1 MILES TO THIS LOCATION.



BTA OIL PRODUCERS

20509 JV-P OGDEN #1H WELL
 LOCATED 1980 FEET FROM THE NORTH LINE
 AND 1830 FEET FROM THE EAST LINE OF SECTION 29,
 TOWNSHIP 23 SOUTH, RANGE 28 EAST, N.M.P.M.,
 EDDY COUNTY, NEW MEXICO.

Survey Date: 4/6/09	Sheet 1 of 1 Sheets		
W.O. Number: 09.11.0301	Dr By: LA	Rev 1:N/A	
Date: 4/9/09		09110301	Scale: 1"=100'



BTA OIL PRODUCERS, LLC

LOCATION MAP

20509 JV-P OGDEN #1H

1980' FNL & 1830' FEL T23S-R28E-Sec 29

EDDY CO., NEW MEXICO

POSTED WELL DATA



Operator
Well Name
Well Number

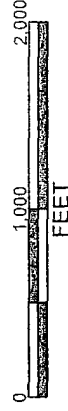
WELL SYMBOLS

- Oil Well
- Oil & Gas Well
- Plugged and Abandoned

REMARKS

Red Circle Indicates 1/2 Mile Radius of Location

By: M. Robledo



May 29, 2009

