

MARBOB ENERGY CORPORATION**HYDROGEN SULFIDE DRILLING OPERATIONS PLAN****I. HYDROGEN SULFIDE TRAINING**

All personnel, whether regularly assigned, contracted, or employed on an unscheduled basis, will receive training from a qualified instructor in the following areas prior to commencing drilling operations on this well:

- A. The hazards and characteristics of hydrogen sulfide (H_2S).
- B. The proper use and maintenance of personal protective equipment and life support systems.
- C. The proper use of H_2S detectors, alarms, warning systems, briefing areas, evacuation procedures, and prevailing winds.
- D. The proper techniques for first aid and rescue procedures.

In addition, supervisory personnel will be trained in the following areas:

- A. The effects of H_2S on metal components. If high tensile tubulars are to be used, personnel will be trained in their special maintenance requirements.
- B. Corrective action and shut-in procedures when drilling or reworking a well and blowout prevention and well control procedures.
- C. The contents and requirements of the H_2S Drilling Operations Plan and the Public Protection Plan.

There will be an initial training session just prior to encountering a known or probable H_2S zone (within 3 days or 500 feet) and weekly H_2S and well control drills for all personnel in each crew. The initial training session shall include a review of the site specific H_2S Drilling Operations Plan and the Public Protection Plan. This plan shall be available at the well site. All personnel will be required to carry documentation that they have received the proper training.

II. H_2S SAFETY EQUIPMENT AND SYSTEMS

Note: All H₂S safety equipment and systems will be installed, tested, and operational when drilling reaches a depth of 500 feet above, or three days prior to penetrating the first zone containing or reasonably expected to contain H₂S.

A. Well Control Equipment:

Flare line.

Choke manifold.

Blind rams and pipe rams to accommodate all pipe sizes with properly sized closing unit.

Auxiliary equipment to include: annular preventer, mud-gas separator, rotating head.

B. Protective equipment for essential personnel:

Mark II Surviveair 30-minute units located in the dog house and at briefing areas.

C. H₂S detection and monitoring equipment:

2 - portable H₂S monitor positioned on location for best coverage and response. These units have warning lights and audible sirens when H₂S levels of 20 ppm are reached.

D. Visual warning systems:

Caution/Danger signs shall be posted on roads providing direct access to location. Signs will be painted a high visibility yellow with black lettering of sufficient size to be readable at a reasonable distance from the immediate location. Bilingual signs will be used, when appropriate. See example attached.

E. Mud Program:

The mud program has been designed to minimize the volume of H₂S circulated to the surface.

F. Metallurgy:

All drill strings, casings, tubing, wellhead, blowout preventers, drilling spool, kill lines, choke manifold and lines, and valves shall be suitable for H₂S service.

G. Communication:

Company vehicles equipped with cellular telephone and 2-way radio.

Marbob Energy has conducted a review to determine if an H₂S contingency plan is required for the above referenced well. We were able to conclude that any potential hazardous volume would be minimal. H₂S concentrations of wells in this area from surface to TD are low enough; therefore we do not believe that an H₂S Contingency Plan would be necessary.

W A R N I N G

**YOU ARE ENTERING AN H₂S AREA
AUTHORIZED PERSONNEL ONLY**

- 1. BEARDS OR CONTACT LENSES NOT ALLOWED**
- 2. HARD HATS REQUIRED**
- 3. SMOKING IN DESIGNATED AREAS ONLY**
- 4. BE WIND CONSCIOUS AT ALL TIMES**
- 5. CK WITH MARBOB FOREMAN AT MAIN OFFICE**

MARBOB ENERGY CORPORATION

1-575-748-3303

EMERGENCY CALL LIST

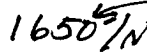
	<u>Office</u>	<u>Mobile</u>	<u>Home</u>
Marbob Energy Corp.	575-748-3303		
Sheryl Baker	575-748-3303	575-748-5489	575-748-2396
Johnny C. Gray	575-748-3303	575-748-5983	575-885-3879
Raye Miller	575-748-3303	575-513-0176	575-746-9577
Dean Chumbley	575-748-3303	575-748-5988	575-748-2426

EMERGENCY RESPONSE NUMBERS **Eddy County, New Mexico**

State Police	575-748-9718
Eddy County Sheriff	575-746-2701
Emergency Medical Services (Ambulance)	911 or 575-746-2701
Eddy County Emergency Management (Harry Burgess)	575-887-9511
State Emergency Response Center (SERC)	575-476-9620
Carlsbad Police Department	575-885-2111
Carlsbad Fire Department	575-885-3125
New Mexico Oil Conservation Division	575-748-1283
Indian Fire & Safety	800-530-8693
Halliburton Services	800-844-8451

MARBOB ENERGY CORPORATION
MULTI-POINT SURFACE USE AND OPERATIONS PLAN

Rocket Federal #3H
Surf: 330' FSL & 230' FWL
BHL: ~~330~~ 380' FNL & 380' FWL
Section 3, T26S, R29E
Eddy County, New Mexico

1650'  N

This plan is submitted with Form 3160-3, Application for Permit to Drill, covering the above described well. The purpose of this plan is to describe the location of the proposed well, the proposed construction activities and operations plan, the magnitude of the surface disturbance involved and the procedures to be followed in rehabilitating the surface after completion of the operations, so that a complete appraisal can be made of the environmental effect associated with the operations.

1. EXISTING ROADS:

- a. The well site and elevation plat for the proposed well are reflected on the well site layout; Form C-102. The well was staked by John West Surveying Company.
- b. Exhibit 2 is a portion of a topo map showing the well and roads in the vicinity of the proposed location. The proposed wellsite and the access route to the location are indicated in red on Exhibit 2. Right of way using this proposed route is being requested if necessary.
- c. Routine grading and maintenance of existing roads will be conducted as necessary to maintain their condition as long as any operations continue on this lease.

DIRECTIONS:

From the intersection of U.S. HWY. #285 (Pecos Hwy) and Co. Rd. #725 (Longhorn Rd.), go northeast on co. rd. #725 approx. 3.8 miles. Turn left at lease rd. (El Paso Pipeline Road) and go east approx 1.2 miles to a proposed road survey. Turn left at proposed road survey and go north approx 224 feet. This location stake is northeast approx. 212 feet.

2. PLANNED ACCESS ROAD:

There is a proposed road of 224' coming in on the southwestern side of the well pad.

3. LOCATION OF EXISTING AND/OR PROPOSED FACILITIES:

- A. In the event the well is found productive, the Rocket Federal #3H tank battery would be built and utilized and the necessary production equipment will be installed at the well site. A Site Facilities Diagram will

be submitted upon completion of facility. All flowlines will adhere to API standards

- B. If electricity is needed, power will be obtained from Central Valley Electric. Central Valley Electric will apply for ROW for their power lines.
- C. If the well is productive, rehabilitation plans are as follows:
 - i. The original topsoil from the well site will be returned to the location. The drill site will then be contoured as close as possible to the original state.

4. LOCATION AND TYPES OF WATER SUPPLY:

This location will be drilled using a combination of water mud systems (outlined in the Drilling Program). The water will be obtained from commercial water stations in the area and hauled to location by transport truck using the existing and proposed roads shown in Exhibit #2. On occasion, water will be obtained from a pre-existing water well, running a pump directly to the drill rig. In these cases where a poly pipeline is used to transport water for drilling purposes, the existing and proposed road shown in Exhibit "2" will be utilized.

5. CONSTRUCTION MATERIALS:

All Caliche utilized for the drilling pad and proposed access road will be obtained from an existing BLM approved pit or from prevailing deposits found under the location. All roads will be constructed of 6" rolled and compacted caliche. Will use BLM recommended use of extra caliche from other locations close by for roads, if available.

6. METHODS OF HANDLING WASTE MATERIAL:

- a. All trash, junk and other waste material will be removed from the wellsite within 30 days after finishing drilling and/or completion operations. All waste material will be contained in trash cages or trash bins to prevent scattering. When the job is completed, all contents will be removed and disposed of in an approved sanitary landfill.
- b. The supplier, including broken sacks, will pick up slats remaining after completion of well.
- c. A porto-john will be provided for the rig crews. This equipment will be properly maintained during the drilling and completion operations and will be removed when all operations are complete.
- d. Disposal of fluids to be transported by an approved disposal company.

7. ANCILLARY FACILITIES:

No campsite or other facilities will be constructed as a result of this well.

8. WELLSITE LAYOUT:

- a. Exhibit 3 shows the proposed well site layout with dimensions of the pad layout.
- b. This exhibit indicates proposed location of fresh water sump pits if utilized and living facilities.

- c. Mud pits in the active circulating system will be steel pits and a closed loop system will be utilized.

9. PLANS FOR SURFACE RECLAMATION:

- a. After finishing drilling and/or completion operations, if the well is found non-commercial, the caliche will be removed from the pad and transported to the original caliche pit or used for other drilling locations. The road will be reclaimed as directed by the BLM. The original top soil will again be returned to the pad and contoured, as close as possible, to the original state.
- b. The location and road will be rehabilitated as recommended by the BLM.
- c. If the well is deemed commercially productive, caliche from areas of the pad site not required for operations will be reclaimed. The original top soil will be returned to the area of the drill pad not necessary to operate the well. These unused areas of the drill pad will be contoured, as close as possible, to match the original topography. Reserve pit will not be used on this location therefore no reclamation is needed.
- d. Topsoil will be stockpiled on the EAST SIDE of the location until it is needed for interim reclamation described in paragraph above.

10. SURFACE OWNERSHIP:

The surface is owned by the US Government and is administered by the Bureau of Land Management. The surface is multiple use with the primary uses of the region for the grazing of livestock and the production of oil and gas. The proposed road routes and the surface location will be restored as directed by the BLM.

11. OTHER INFORMATION:

- a. The area surrounding the well site is grassland. The topsoil is very sandy in nature. The vegetation is moderately sparse with native prairie grass, some mesquite bushes and shinnery oak. No wildlife was observed but it is likely that deer, rabbits, coyotes, and rodents traverse the area.
- b. There is no permanent or live water in the general proximity of the location.
- c. There are no dwellings within 2 miles of location.
- d. A Cultural Resources Examination will be completed by Boone Archeological and forwarded to the BLM office in Carlsbad, New Mexico.

12. OPERATOR'S REPRESENTATIVE:

A. Through A.P.D. Approval:
Dean Chumbley, Landman
Marbob Energy Corporation
P. O. Box 227
Artesia, NM 88211-0227
Phone (575)748-3303
Cell (575) 748-5988

B. Through Drilling Operations
Sheryl Baker, Drilling Supervisor
Marbob Energy Corporation
P. O. Box 227
Artesia, NM 88211-0227
Phone (575)748-3303
Cell (575)748-5489

STATEMENT ACCEPTING RESPONSIBILITY FOR OPERATIONS

The undersigned accepts all applicable terms, conditions, stipulations, and restrictions concerning operations conducted on the leased land or portion thereof, as described below:

Date: March 3, 2010

Lease #: SL: nma6849
BHL: Unleased
Rocket Federal #3H

Legal Description: Sec. 3-T26S-R29E
Eddy County, New Mexico

Formation(s): Permian

Bond Coverage: Statewide

BLM Bond File #: NMB000412

Marbob Energy Corporation


Nancy Agnew
Nancy Agnew
Land Department

CERTIFICATION:

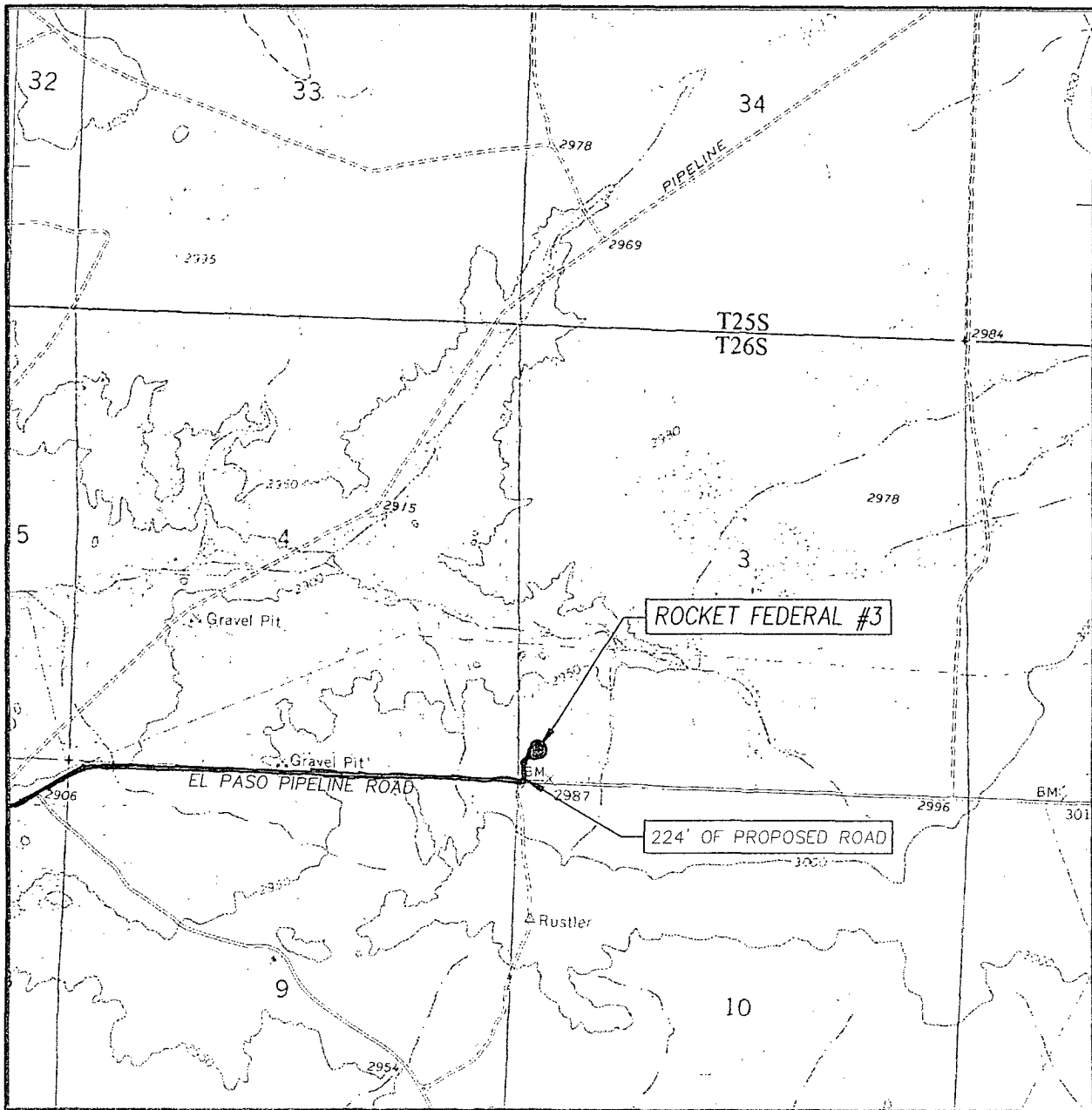
I hereby certify that I, or persons under my direct supervision, have inspected the proposed drillsite and access route, that I am familiar with the conditions which presently exist; that the statements made in this plan are to the best of my knowledge, true and correct; and that the work associated with the operations proposed herein will be performed by Marbob Energy Corporation and its contractors and subcontractors in conformity with this plan and the terms and conditions under which it is approved. This statement is subject to the provisions of 18 U.S.C. 1001 for the filing of a false statement.

3/4/2010
Date

Marbob Energy Corporation


William Miller
Land Department

LOCATION VERIFICATION MAP



SCALE: 1" = 2000'

CONTOUR INTERVAL:
ROSS RANCH, N.M. - 10'

SEC. 3 TWP. 26-S RGE. 29-E

SURVEY _____ N.M.P.M.

COUNTY EDDY STATE NEW MEXICO

DESCRIPTION 330' FSL & 230' FWL

ELEVATION 2989'

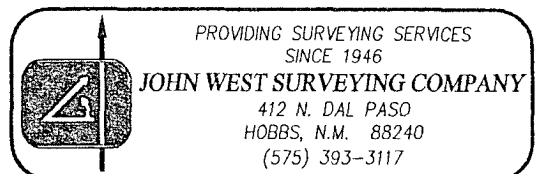
OPERATOR MARBOB ENERGY CORPORATION

LEASE ROCKET FEDERAL

U.S.G.S. TOPOGRAPHIC MAP

ROSS RANCH, N.M.

- Existing Roads



FILED 11 17

Tom Brown
Drg.
Store
IP 9348
DIA 6-21-60

2

Central Res.
HBP
11039
C. Hunkarmer

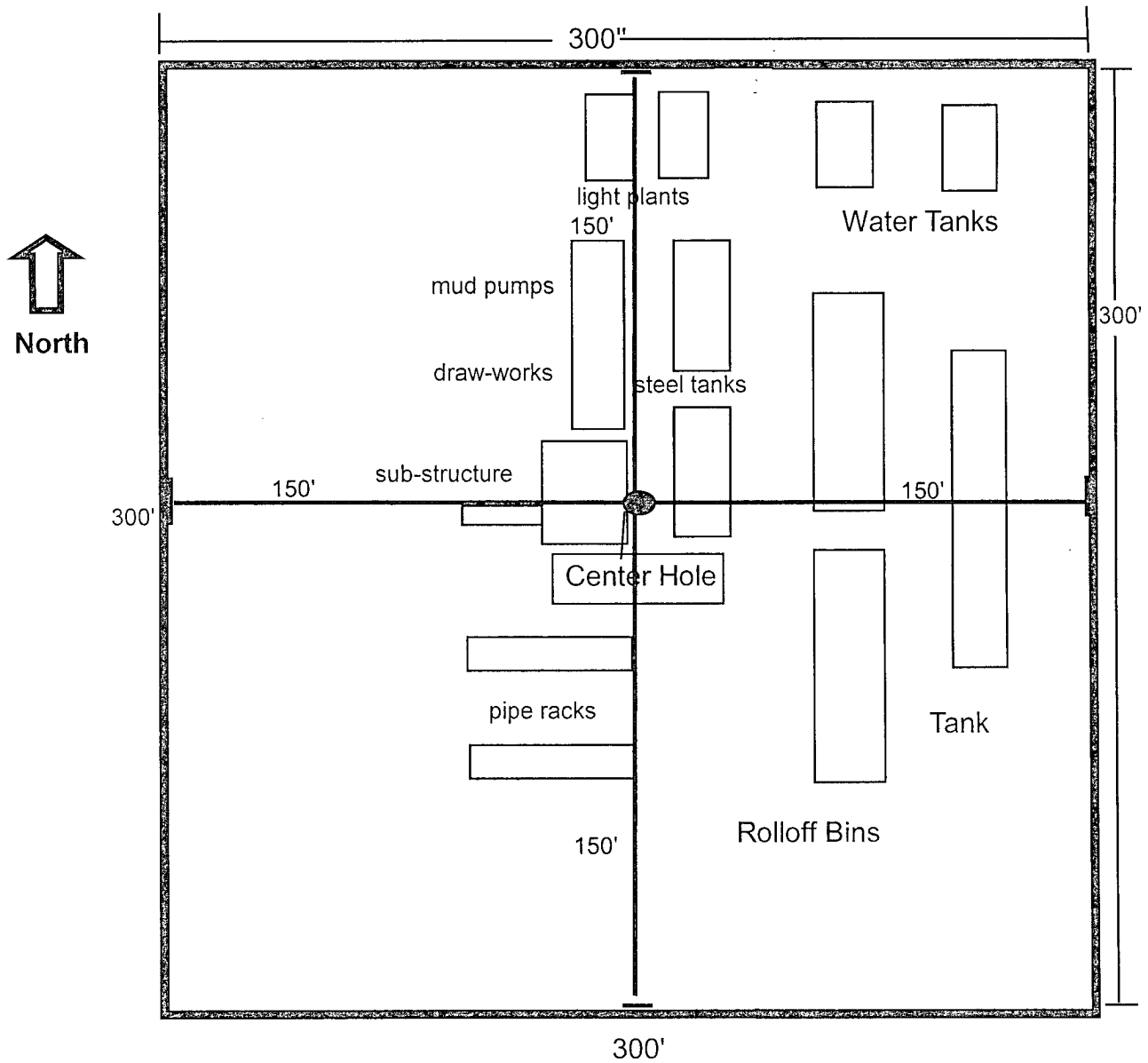
1-AFC
• P46U S "Fed"

644
600

23

Optitex
Pet
11038

Well Site Lay-Out Plat

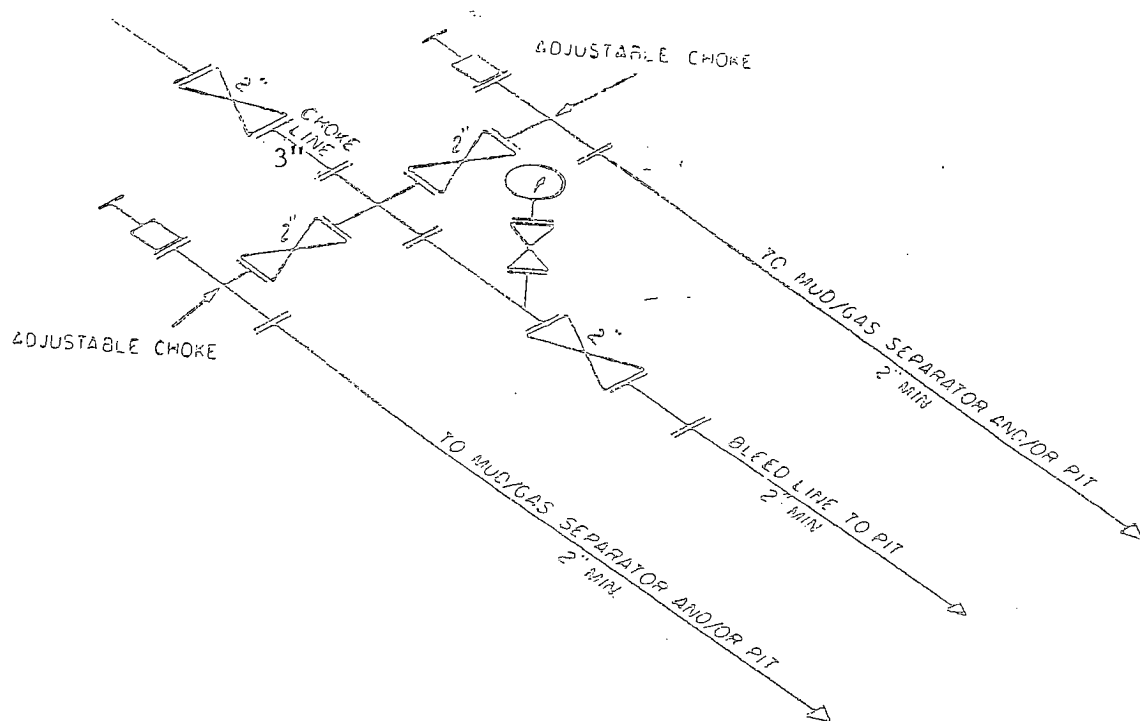
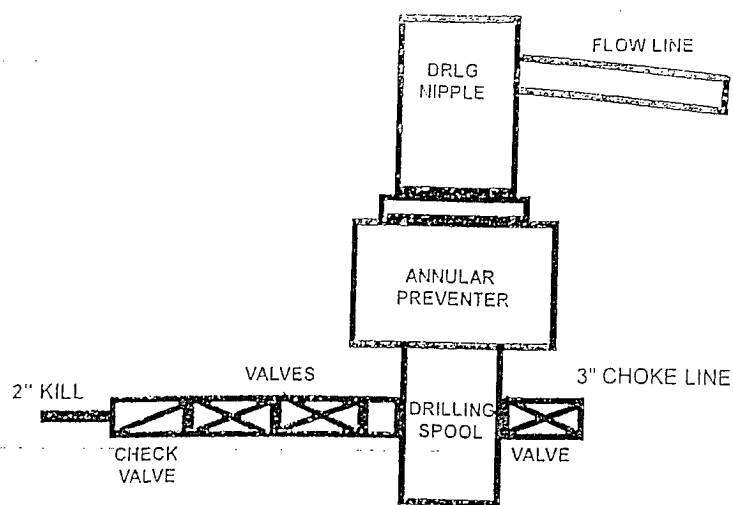


Rocket Federal #3H
 SHL: 330 FSL 230 FWL
 BHL: ~~330~~ FNL 380 FWL
 Sec. 3 T26S R29E
 Eddy County, NM

1650' N (handwritten note with an arrow pointing towards the top-left corner of the site)

EXHIBIT THREE

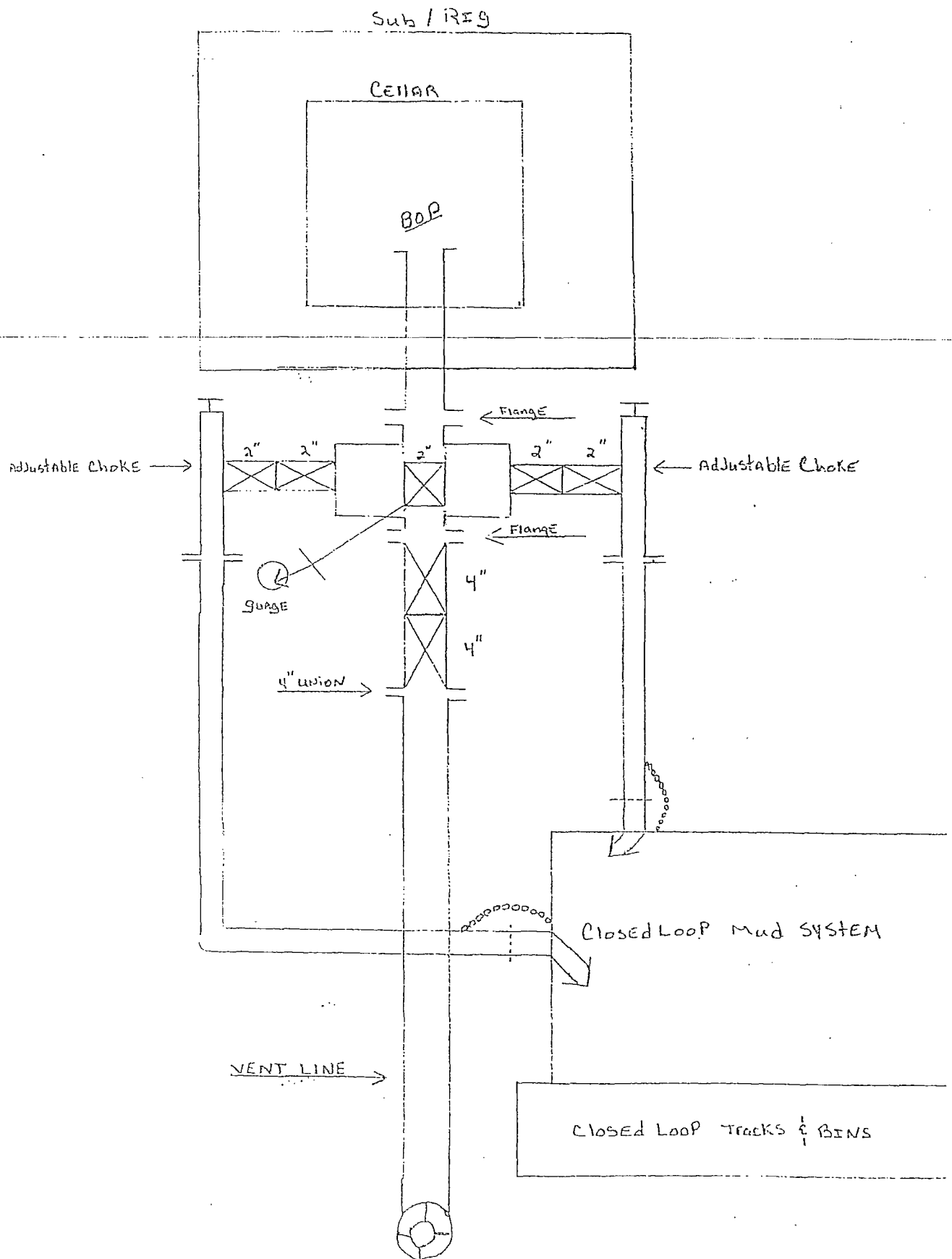
2M SYSTEM



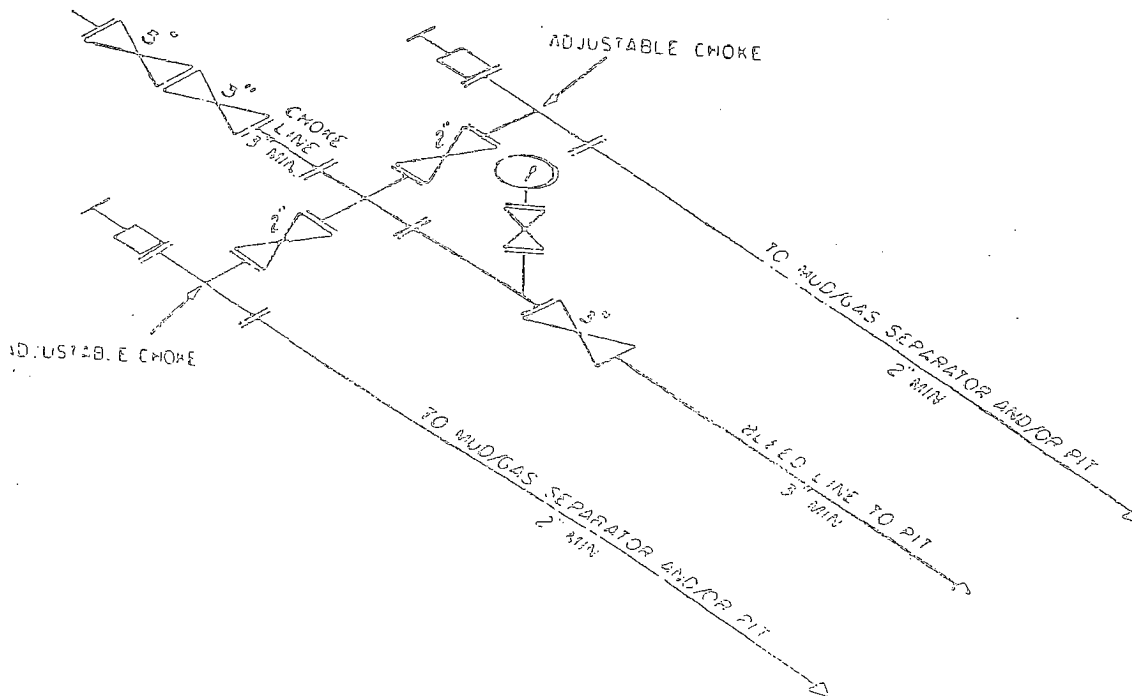
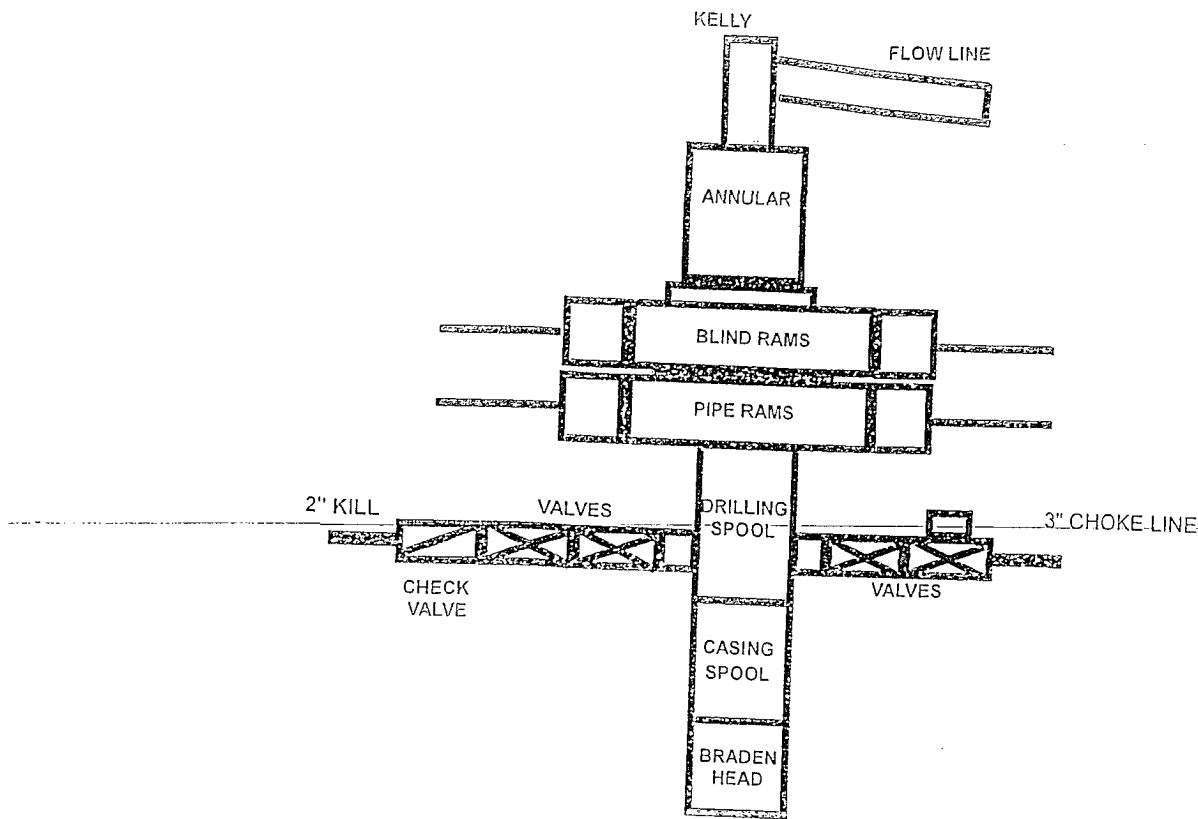
2M CHOKE MANIFOLD EQUIPMENT — CONFIGURATION OF CHOKES

MAY VARY

2M Choke Manifold Equipment



3M SYSTEM



3M CHOKE MANIFOLD EQUIPMENT -- CONFIGURATION OF CHOKES
MAY VARY

3M Choke Manifold Equipment

