

District I
1625 N. French Dr., Hobbs, NM 88240
District II
811 South First, Artesia, NM 88210
District III
1000 Rio Brazos Road, Aztec, NM 87410
District IV
2040 South Pacheco, Santa Fe, NM 87505

State of New Mexico
Energy Minerals and Natural Resources

Oil Conservation Division
2040 South Pacheco
Santa Fe, NM 87505

5
Form C-101
Revised March 17, 1999

Submit to appropriate District Office
State Lease - 6 Copies
Fee Lease - 5 Copies

☐ AMENDED REPORT

APPLICATION FOR PERMIT TO DRILL, RE-ENTER, DEEPEN, PLUG BACK, OR ADD A ZONE

| | | |
|--|-------------------------------------|--|
| ¹ Operator Name and Address Clayton Williams Energy, Inc. Six Desta Drive, Suite 3000 Midland, TX 79705 | | ² OGRID Number 25706 |
| ³ Property Code 25235 | Property Name STATE "20B" | ³ API Number 30 - OIS - 32695 |
| | | ⁶ Well No. 11 |

⁷ Surface Location

| UL or lot no. | Section | Township | Range | Lot Idn | Feet from the | North/South line | Feet from the | East/West line | County |
|---------------|-----------|-------------|-------------|---------|---------------|------------------|---------------|----------------|-------------|
| O | 20 | 17 S | 29 E | | 880 | SOUTH | 2115 | EAST | EDDY |

⁸ Proposed Bottom Hole Location If Different From Surface

| UL or lot no. | Section | Township | Range | Lot Idn | Feet from the | North/South line | Feet from the | East/West line | County |
|---------------|---------|----------|-------|---------|---------------|------------------|---------------|----------------|--------|
| | | | | | | | | | |

| | |
|--|---|
| ⁹ Proposed Pool 1 Empire, East (Yeso) 96610 | ¹⁰ Proposed Pool 2 Grayburg Jackson -7R's,QN,GB,SA (28509) |
|--|---|

| | | | | |
|--|--|--|--|--|
| ¹¹ Work Type Code N | ¹² Well Type Code O | ¹³ Cable/Rotary R | ¹⁴ Lease Type Code S | ¹⁵ Ground Level Elevation 3609' |
| ¹⁶ Multiple N | ¹⁷ Proposed Depth 5000' | ¹⁸ Formation Yeso Sands | ¹⁹ Contractor Patterson | ²⁰ Spud Date Upon approval |

²¹ Proposed Casing and Cement Program

| Hole Size | Casing Size | Casing weight/foot | Setting Depth | Sacks of Cement | Estimated TOC |
|----------------|---------------|--------------------|---------------|-----------------|----------------|
| 12-1/4" | 8-5/8" | 24# | 400' | 300 | Surface |
| 7-7/8" | 5-1/2" | 17# | 5000' | 935 | Surface |
| | | | | | |

²² Describe the proposed program. If this application is to DEEPEN or PLUG BACK, give the data on the present productive zone and proposed new productive zone. Describe the blowout prevention program, if any. Use additional sheets if necessary.

1. Drill a 12-1/4" hole to 400'. Run and set 400' of 8-5/8" 24# J-55 ST&C casing. Cement with 300 sx. of Cl. C cement. Circulate cement to surface.
2. Drill a 7-7/8" hole to 5000'. Run and set 5000' of 5-1/2" 17# ST&C casing with DV tool @ ±2500'. Cement 1st stage with 365 sx. Cl. C 50/50 Poz and cement 2nd stage with 570 sx. 35/65 Poz C and tail with 150 sx. Cl. C neat. Circulate cement to surface.

| | | | |
|--|-----------------------|---|--|
| ²³ I hereby certify that the information given above is true and complete to the best of my knowledge and belief. | | OIL CONSERVATION DIVISION | |
| Signature: <i>Betsy Luna</i> | | Approved by: <i>Jim W. Brown</i> | |
| Printed name: Betsy Luna | | Title: <i>District Supervisor</i> | |
| Title: Engineering Technician | | Approval Date: MAR 25 2003 Expiration Date: MAR 25 2004 | |
| Date: 3/20/2003 | Phone: (915) 682-6324 | Conditions of Approval: | |
| | | Attached <input type="checkbox"/> | |

DISTRICT I
P.O. Box 1980, Hobbs, NM 88241-1980

DISTRICT II
P.O. Drawer DD, Artesia, NM 88211-0719

DISTRICT III
1000 Rio Brazos Rd., Aztec, NM 87410

DISTRICT IV
P.O. BOX 2088, SANTA FE, N.M. 87504-2088

State of New Mexico
Energy, Minerals and Natural Resources Department

OIL CONSERVATION DIVISION
P.O. Box 2088
Santa Fe, New Mexico 87504-2088

Form C-102
Revised February 10, 1994
Submit to Appropriate District Office
State Lease - 4 Copies
Fee Lease - 3 Copies

WELL LOCATION AND ACREAGE DEDICATION PLAT

☐ AMENDED REPORT

| | | |
|------------------------|--|----------------------------------|
| API Number | Pool Code 96610 | Pool Name EMPIRE, EAST (YES0) |
| Property Code 25235 | Property Name STATE 20 B | Well Number 11 |
| OGRID No. 25706 | Operator Name CLAYTON WILLIAMS ENERGY, INC. | Elevation 3609' |

Surface Location

| | | | | | | | | | |
|--------------------|---------------|------------------|---------------|---------|----------------------|---------------------------|-----------------------|------------------------|----------------|
| UL or lot No. 0 | Section 20 | Township 17-S | Range 29-E | Lot Idn | Feet from the 880 | North/South line SOUTH | Feet from the 2115 | East/West line EAST | County EDDY |
|--------------------|---------------|------------------|---------------|---------|----------------------|---------------------------|-----------------------|------------------------|----------------|

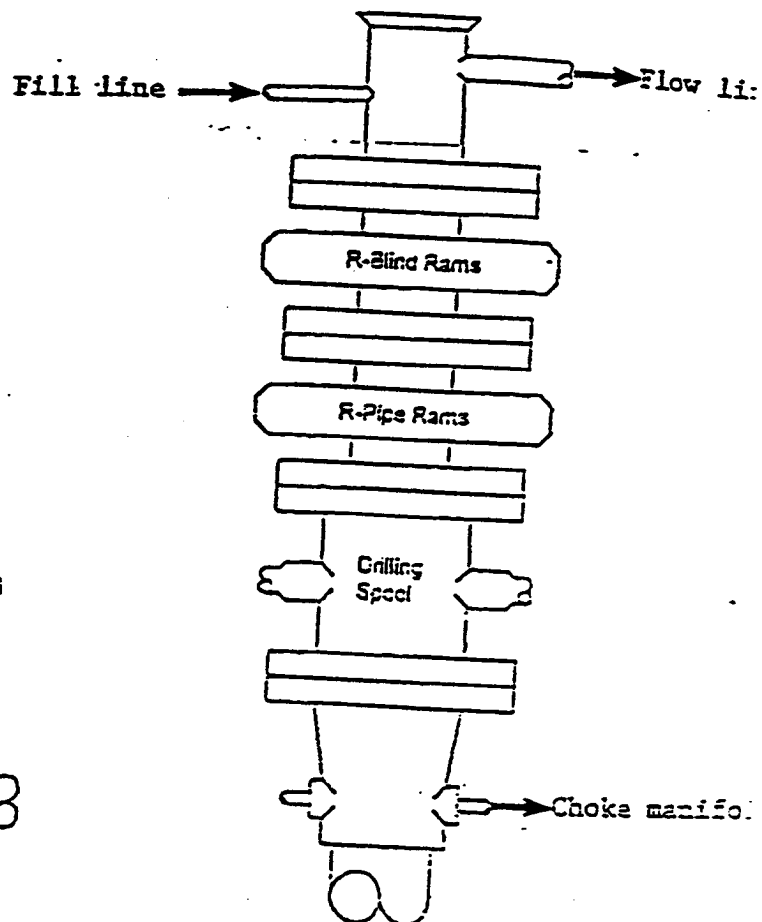
Bottom Hole Location If Different From Surface

| | | | | | | | | | |
|-----------------------|-----------------|--------------------|-----------|---------|---------------|------------------|---------------|----------------|--------|
| UL or lot No. | Section | Township | Range | Lot Idn | Feet from the | North/South line | Feet from the | East/West line | County |
| | | | | | | | | | |
| Dedicated Acres 40 | Joint or Infill | Consolidation Code | Order No. | | | | | | |

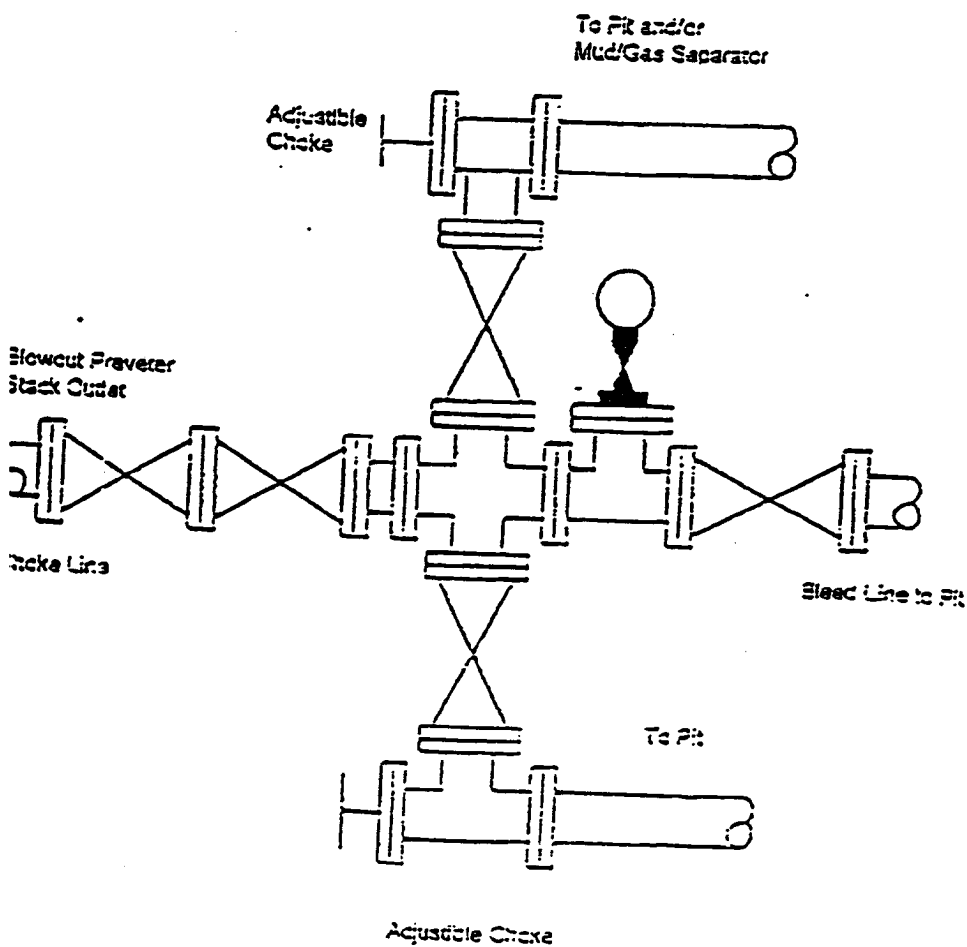
NO ALLOWABLE WILL BE ASSIGNED TO THIS COMPLETION UNTIL ALL INTERESTS HAVE BEEN CONSOLIDATED
OR A NON-STANDARD UNIT HAS BEEN APPROVED BY THE DIVISION

| | | | | | | | | | |
|--|--|--|--|--|--|--|--|--|--|
| | | | | | | | | | |
| | | | | | | | | | |
| OPERATOR CERTIFICATION I hereby certify the the information contained herein is true and complete to the best of my knowledge and belief. Signature Betsy Luna Printed Name Engineering Technician Title 03-20-2003 Date | | | | | | | | | |
| SURVEYOR CERTIFICATION I hereby certify that the well location shown on this plat was plotted from field notes of actual surveys made by me or under my supervision, and that the same is true and correct to the best of my belief. MARCH 17, 2003 Date Surveyed Signature of Surveyor Professional Surveyor 3/18/03 Certificate No. RONALD J. EIDSON 3239 GARY EIDSON 12841 | | | | | | | | | |

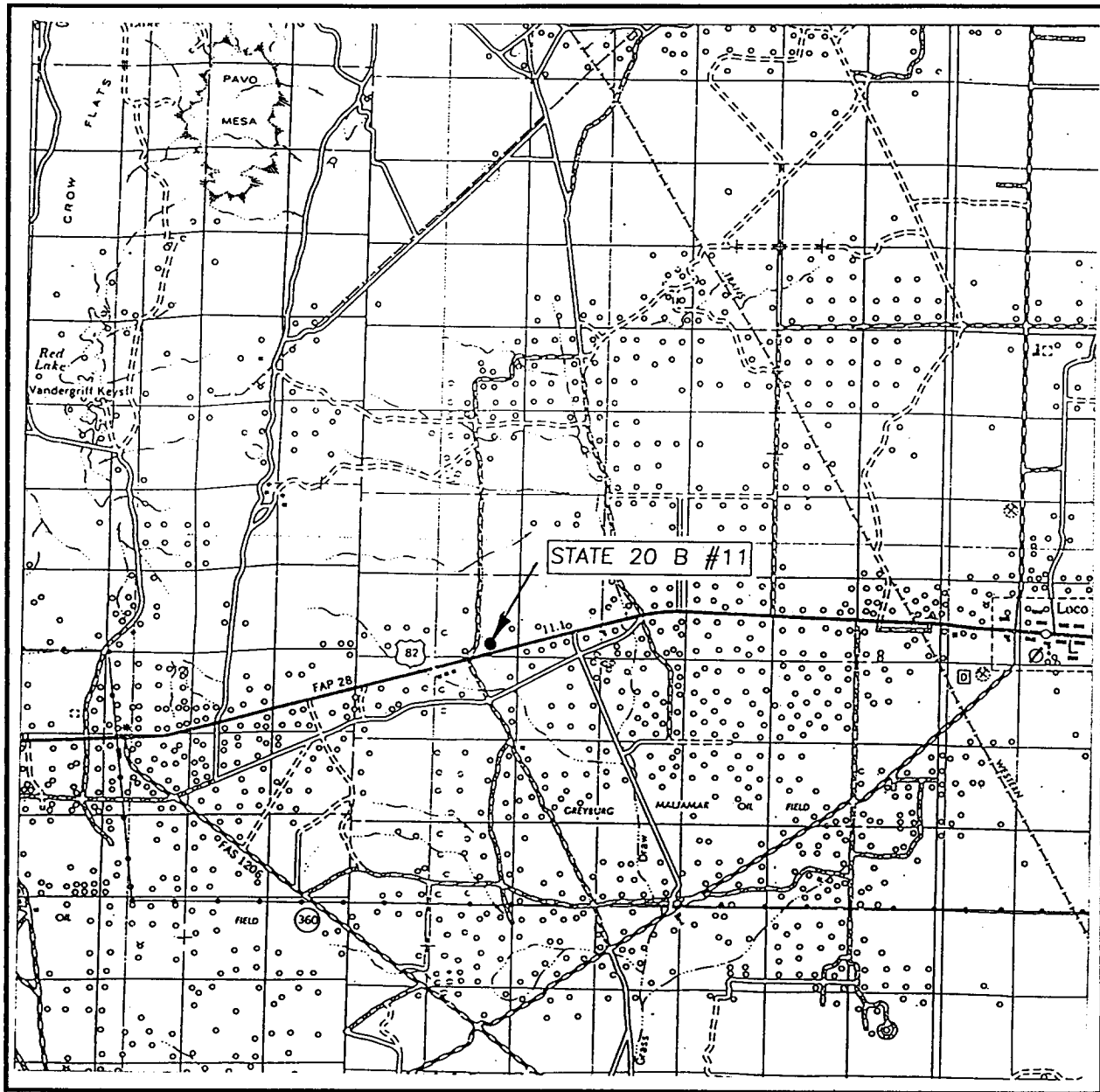
BLOWOUT PREVENTER SYSTEM



Choke Manifold Assembly for 3M WP System



VICINITY MAP



SCALE: 1" = 2 MILES

SEC. 20 TWP. 17-S RGE. 29-E

SURVEY N.M.P.M.

COUNTY EDDY

DESCRIPTION 880' FSL & 2115' FEL

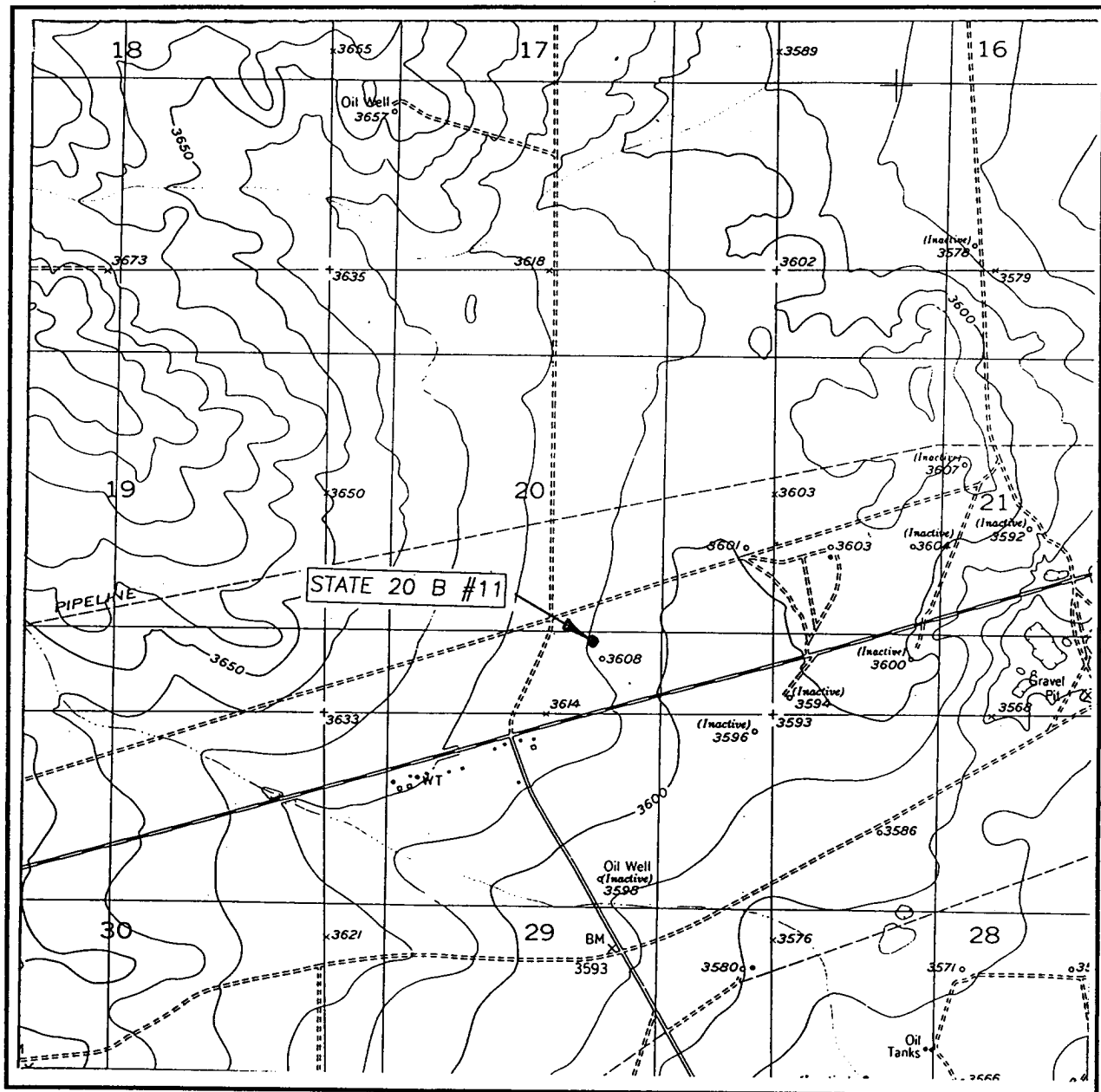
ELEVATION 3609'

OPERATOR CLAYTON WILLIAMS ENERGY, INC.

LEASE STATE 20 B

JOHN WEST SURVEYING
HOBBS, NEW MEXICO
(505) 393-3117

LOCATION VERIFICATION MAP



SCALE: 1" = 2000'

CONTOUR INTERVAL: 10'
RED LAKE SE, N.M.

SEC. 20 TWP. 17-S RGE. 29-E

SURVEY N.M.P.M.

COUNTY EDDY

DESCRIPTION 880' FSL & 2115' FEL

ELEVATION 3609'

OPERATOR CLAYTON WILLIAMS ENERGY, INC.

LEASE STATE 20 B

U.S.G.S. TOPOGRAPHIC MAP
RED LAKE SE, N.M.

JOHN WEST SURVEYING
HOBBS, NEW MEXICO
(505) 393-3117