

## District I

1625 N. French Dr., Hobbs, NM 88240

## District II

1301 W. Grand Avenue, Artesia, NM 88200

## District III

1000 Rio Brazos Rd., Aztec, NM 87401

## District IV

1220 S. St. Francis Dr., Santa Fe, NM 87505

**RECEIVED**

FEB 21 2011

**HOBBSOCD**

State of New Mexico

Energy, Minerals &amp; Natural Resources Department

OIL CONSERVATION DIVISION

1220 South St. Francis Dr.

Santa Fe, NM 87505

Form C-102

Revised October 15, 2009

Submit one copy to appropriate

District Office

☐ AMENDED REPORT

## WELL LOCATION AND ACREAGE DEDICATION PLAT

<sup>1</sup> API Number <b>30-016-38476</b>	<sup>2</sup> Pool Code <b>65010</b>	<sup>3</sup> Pool Name <b>WINCHESTER; BONE SPRING</b>
<sup>4</sup> Property Code <b>38500</b>	<sup>5</sup> Property Name <b>JASPER "32" STATE COM</b>	
<sup>7</sup> OGRID No. <b>6137</b>	<sup>8</sup> Operator Name <b>DEVON ENERGY PRODUCTION COMPANY, L.P.</b>	
		<sup>6</sup> Well Number <b>4H</b>
		<sup>9</sup> Elevation <b>3263.7</b>

<sup>10</sup> Surface Location

UL or lot no.	Section	Township	Range	Lot Idn	Feet from the	North/South line	Feet from the	East/West line	County
<b>A</b>	<b>32</b>	<b>19 S</b>	<b>29 E</b>		<b>340</b>	<b>NORTH</b>	<b>730</b>	<b>EAST</b>	<b>EDDY</b>

<sup>11</sup> Bottom Hole Location If Different From Surface

UL or lot no.	Section	Township	Range	Lot Idn	Feet from the	North/South line	Feet from the	East/West line	County
<b>P</b>	<b>32</b>	<b>19 S</b>	<b>29 E</b>		<b>340</b>	<b>SOUTH</b>	<b>400</b>	<b>EAST</b>	<b>EDDY</b>

<sup>12</sup> Dedicated Acres <b>160</b>	<sup>13</sup> Joint or Infill	<sup>14</sup> Consolidation Code	<sup>15</sup> Order No.
---	-------------------------------	----------------------------------	-------------------------

No allowable will be assigned to this completion until all interests have been consolidated or a non-standard unit has been approved by the division.

NW CORNER SEC. 32 LAT. = 32.624596°N (NAD 83) LONG. = 104.105568°W  NMSP EAST (FT) N = 591032.08 E = 611457.20	<b>JASPER "32" STATE COM 4H</b> ELEV. = 3263.7' LAT. = 32.623619°N (NAD83) LONG. = 104.090791°W  NMSP EAST (FT) N = 590686.60 E = 616008.41		<b><sup>17</sup> OPERATOR CERTIFICATION</b> I hereby certify that the information contained herein is true and complete to the best of my knowledge and belief, and that this organization either owns a working interest or undivided mineral interest in the land including the proposed bottom hole location or has a right to drill this well at this location pursuant to a contract with an owner of such a mineral or working interest, or to a voluntary pooling agreement or a compulsory pooling order heretofore entered by the division.  Signature: Date: 02/10/11 Printed Name: <b>STEPHANIE A. YSASAGA</b>
	NE CORNER SEC. 32 LAT. = 32.624547°N (NAD 83) LONG. = 104.088419°W  NMSP EAST (FT) N = 591025.80 E = 616737.99		<b><sup>18</sup> SURVEYOR CERTIFICATION</b> I hereby certify that the well location shown on this plat was plotted from field notes of actual surveys made by me or under my supervision, and that the same is true and correct to the best of my belief. DECEMBER 15, 2010 Date of Survey: Signature and Seal of Professional Surveyor: Certificate Number: <b>FILIMON F. JARAMILLO, P.S. 12797</b> SURVEY NO. 345
SW CORNER SEC. 32 LAT. = 32.610092°N (NAD 83) LONG. = 104.105578°W  NMSP EAST (FT) N = 585753.90 E = 611465.46	<b>BOTTOM OF HOLE</b> LAT. = 32.610983°N (NAD83) LONG. = 104.089754°W  NMSP EAST (FT) N = 585086.13 E = 616343.74		

PENETRATION POINT: 340' FNL &amp; 730' FEL

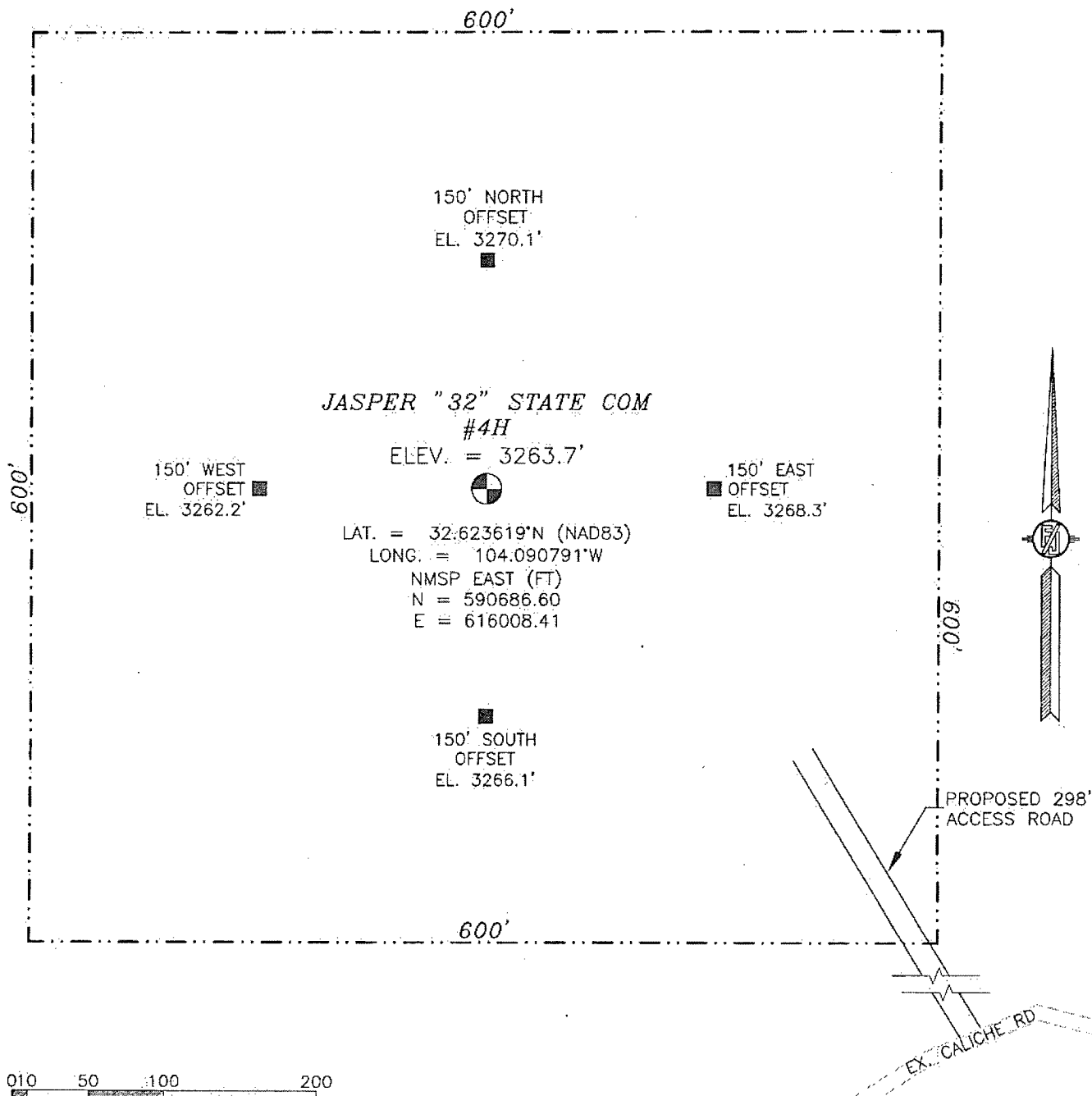


PRODUCING AREA



PROJECT AREA

SECTION 32, TOWNSHIP 19 SOUTH, RANGE 29 EAST, N.M.P.M.  
EDDY COUNTY, STATE OF NEW MEXICO



0 10 50 100 200  
SCALE 1" = 100'

**DIRECTIONS TO LOCATION**

FROM CR 235 (CURRY COMB) & CR 210 (OLD LOCO), GO WEST ON 235 1.3 MILES, TURN LEFT AND GO SOUTH 2.4 MILES TURN LEFT AND GO SOUTHEAST 0.8 MILES TURN LEFT AND GO NORTH 0.3 MILES BEND RIGHT AND GO EAST 0.1 MILES TURN LEFT AND GO NORTH 0.2 MILES BEND LEFT AND GO WEST 300' TO A PROPOSED ROAD SURVEY AND FOLLOW FLAGS NORTHWEST 298' TO THE SE CORNER OF PROPOSED PAD FOR THIS LOCATION.

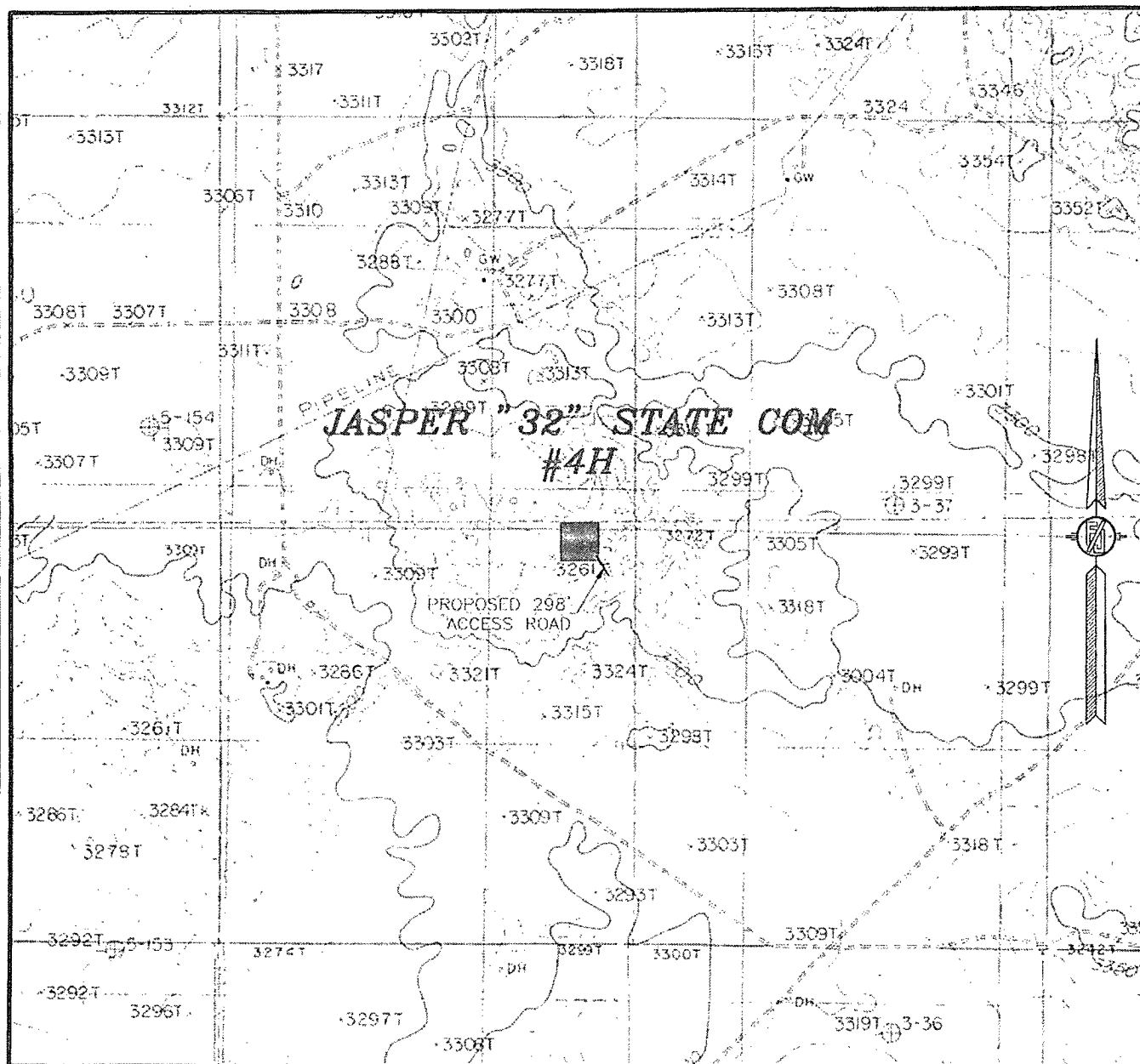
DEVON ENERGY PRODUCTION COMPANY, L.P.  
**JASPER "32" STATE COM #4H**  
LOCATED 340 FT. FROM THE NORTH LINE  
AND 730 FT. FROM THE EAST LINE OF  
SECTION 32, TOWNSHIP 19 SOUTH,  
RANGE 29 EAST, N.M.P.M.  
EDDY COUNTY, STATE OF NEW MEXICO

DECEMBER 15, 2010

SURVEY NO. 345

MADRON SURVEYING, INC. 301 SOUTH CANAL CARLSBAD, NEW MEXICO  
(575) 887-5830

SECTION 32, TOWNSHIP 19 SOUTH, RANGE 29 EAST, N.M.P.M.  
 EDDY COUNTY, STATE OF NEW MEXICO  
**LOCATION VERIFICATION MAP**



CONTOUR INTERVAL  
 ILLINOIS CAMP SE

NOT TO SCALE

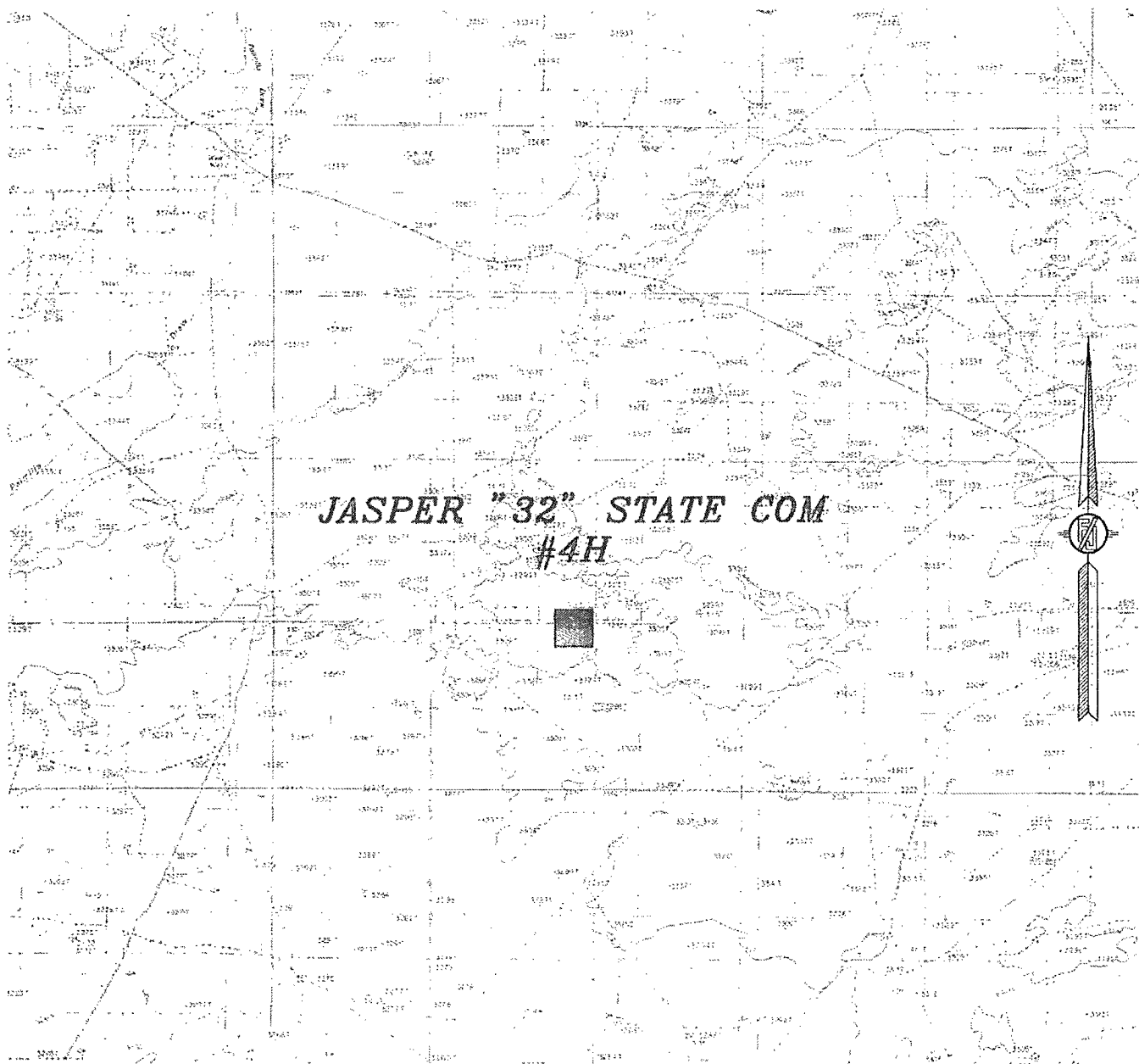
DEVON ENERGY PRODUCTION COMPANY, L.P.  
**JASPER "32" STATE COM #4H**  
 LOCATED 340 FT. FROM THE NORTH LINE  
 AND 730 FT. FROM THE EAST LINE OF  
 SECTION 32, TOWNSHIP 19 SOUTH,  
 RANGE 29 EAST, N.M.P.M.  
 EDDY COUNTY, STATE OF NEW MEXICO

DECEMBER 15, 2010

SURVEY NO. 345

MADRON SURVEYING, INC. 301 SOUTH CANAL (575) 887-5830 CARLSBAD, NEW MEXICO

SECTION 32, TOWNSHIP 19 SOUTH, RANGE 29 EAST, N.M.P.M.  
EDDY COUNTY, STATE OF NEW MEXICO  
**VICINITY MAP**



DEVON ENERGY PRODUCTION COMPANY, L.P.

NOT TO SCALE

**JASPER "32" STATE COM #4H**  
LOCATED 340 FT. FROM THE NORTH LINE  
AND 730 FT. FROM THE EAST LINE OF  
SECTION 32, TOWNSHIP 19 SOUTH,  
RANGE 29 EAST, N.M.P.M.  
EDDY COUNTY, STATE OF NEW MEXICO

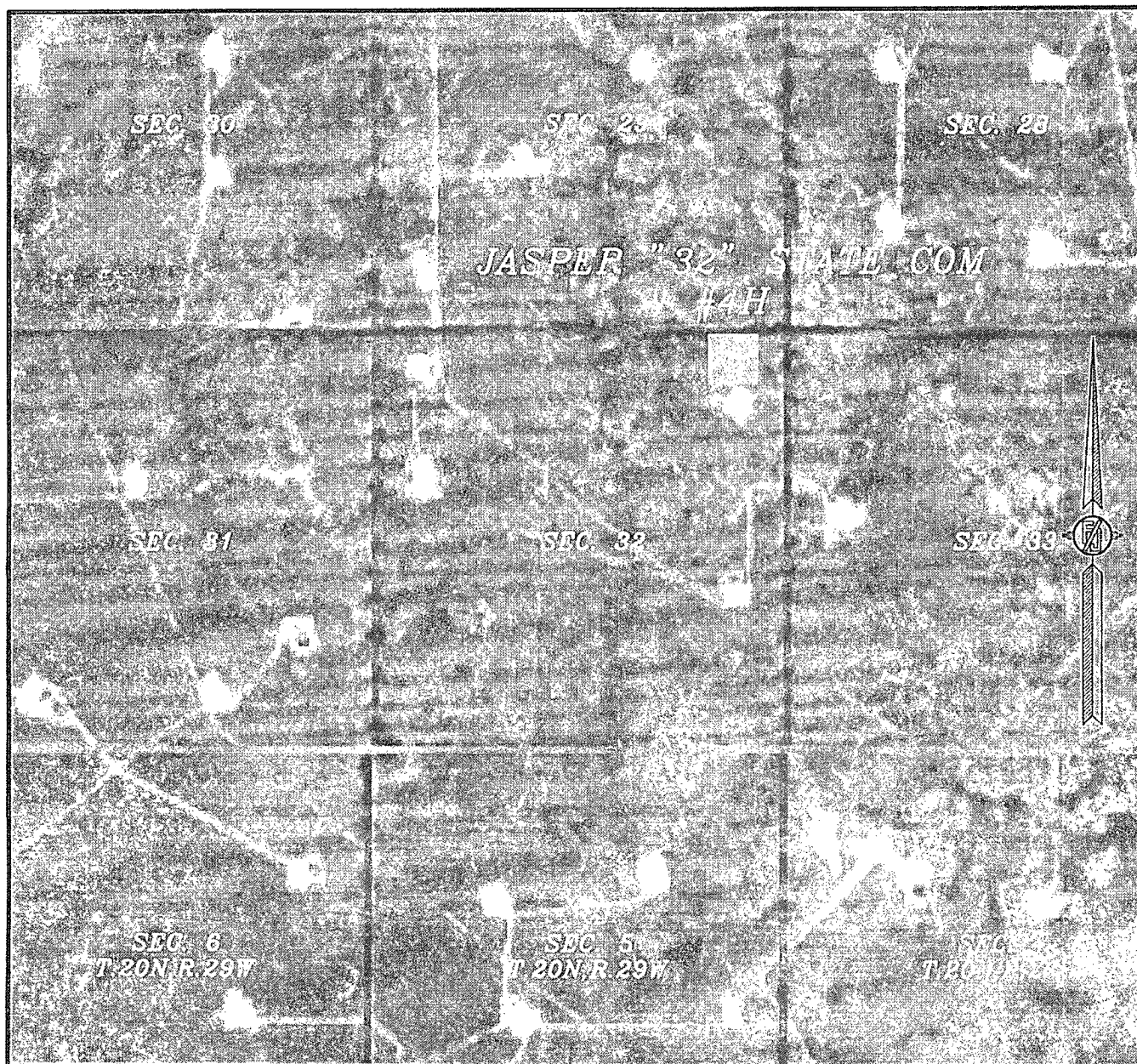
DECEMBER 15, 2010

SURVEY NO. 345

MADRON SURVEYING, INC. 301 SOUTH CANAL CARLSBAD, NEW MEXICO  
(575) 887-5830

SECTION 32, TOWNSHIP 19 SOUTH, RANGE 29 EAST, N.M.P.M.  
EDDY COUNTY, STATE OF NEW MEXICO

## AERIAL MAP



NOT TO SCALE  
AERIAL PHOTO:  
GOOGLE EARTH  
USDA - AUG, 2009

DEVON ENERGY PRODUCTION COMPANY, L.P.

**JASPER "32" STATE COM #4H**

LOCATED 340 FT. FROM THE NORTH LINE  
AND 730 FT. FROM THE EAST LINE OF  
SECTION 32, TOWNSHIP 19 SOUTH,  
RANGE 29 EAST, N.M.P.M.  
EDDY COUNTY, STATE OF NEW MEXICO

DECEMBER 15, 2010

SURVEY NO. 345

MADRON SURVEYING, INC. 301 SOUTH CANAL (575) 887-5830 CARLSBAD, NEW MEXICO