

DISTRICT I
1625 N. FRENCH DR., HOBBS, NM 88240

State of New Mexico
Energy, Minerals and Natural Resources Department

Form C-102

DISTRICT II
1301 W. GRAND AVENUE, ARTESIA, NM 88210

OIL CONSERVATION DIVISION
1220 SOUTH ST. FRANCIS DR.
Santa Fe, New Mexico 87505

Revised October 12, 2005
Submit to Appropriate District Office
State Lease - 4 Copies
Fee Lease - 3 Copies

DISTRICT III
1000 Rio Brazos Rd., Aztec, NM 87410

DISTRICT IV
1220 S. ST. FRANCIS DR., SANTA FE, NM 87505

WELL LOCATION AND ACREAGE DEDICATION PLAT

☐ AMENDED REPORT

API Number 30-015-38664	Pool Code 97197	Pool Name County Line Tank; Abo
Property Code 307018	Property Name PEQUENO MIKE BLU FEDERAL	Well Number 4H
OGRID No. 15363	Operator Name MURCHISON OIL & GAS, INC.	Elevation 3753'

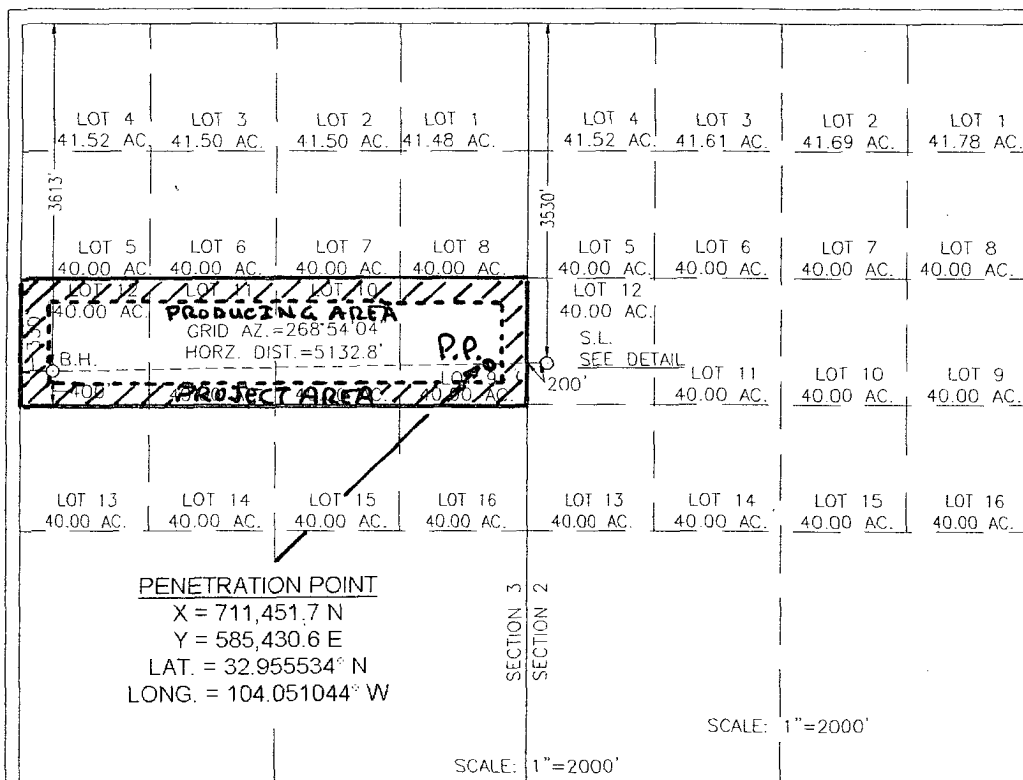
Surface Location

UL or lot No.	Section	Township	Range	Lot Idn	Feet from the	North/South line	Feet from the	East/EAST line	County
LOT 12	2	16-S	29-E		3530	NORTH	200	WEST	EDDY

Bottom Hole Location If Different From Surface

UL or lot No.	Section	Township	Range	Lot Idn	Feet from the	North/South line	Feet from the	East/EAST line	County
LOT 12	3	16-S	29-E		3613	NORTH	330	WEST	EDDY
Dedicated Acres 160	Joint or Infill	Consolidation Code	Order No.						

NO ALLOWABLE WILL BE ASSIGNED TO THIS COMPLETION UNTIL ALL INTERESTS HAVE BEEN CONSOLIDATED
OR A NON-STANDARD UNIT HAS BEEN APPROVED BY THE DIVISION



OPERATOR CERTIFICATION

I hereby certify that the information herein is true and complete to the best of my knowledge and belief, and that this organization either owns a working interest or unleased mineral interest in the land including the proposed bottom hole location or has a right to drill this well at this location pursuant to a contract with an owner of such mineral or working interest, or to a voluntary pooling agreement or a compulsory pooling order heretofore entered by the division.

A. Arnold Nall 1/11/2011
Signature Date
A. ARNOLD NALL
Printed Name

SURVEYOR CERTIFICATION

I hereby certify that the well location shown on this plat was plotted from field notes of actual surveys made by me or under my supervision, and that the same is true and correct to the best of my belief.

DECEMBER 7, 2010

Date Surveyed LA
Signature & Seal
Professional Surveyor

Ronald J. Edson 12/15/2010
12/15/2010
12/15/2010

Certificate No. GARY G. EDSON 12641
RONALD J. EDSON 3239

GEODETIC COORDINATES
NAD 27 NME
SURFACE LOCATION
Y=711462.8 N
X=586009.7 E

LAT.=32.955569° N
LONG.=104.052932° W

DETAIL
3748.9' 3750.2'

BOTTOM HOLE LOCATION
Y=711364.4 N
X=580879.1 E

600'
600'
3747.8' 3750.2'

DISTRICT I
1625 N. FRENCH DR., HOBBS, NM 88240

State of New Mexico
Energy, Minerals and Natural Resources Department

Form C-102

DISTRICT II
1301 W. GRAND AVENUE, ARTESIA, NM 88210

OIL CONSERVATION DIVISION
1220 SOUTH ST. FRANCIS DR.
Santa Fe, New Mexico 87505

Revised October 12, 2005
Submit to Appropriate District Office
State Lease - 4 Copies
Fee Lease - 3 Copies

DISTRICT III
1000 Rio Brazos Rd., Aztec, NM 87410

DISTRICT IV
1220 S. ST. FRANCIS DR., SANTA FE, NM 87505

WELL LOCATION AND ACREAGE DEDICATION PLAT

☐ AMENDED REPORT

API Number 30-015-38664	Pool Code 97197	Pool Name County Line Tank; Abo
Property Code 307018	Property Name PEQUENO MIKE BLU FEDERAL	Well Number 4H
OGRID No. 15363	Operator Name MURCHISON OIL & GAS, INC.	Elevation 3753'

Surface Location

UL or lot No.	Section	Township	Range	Lot Idn	Feet from the	North/South line	Feet from the	East/EAST line	County
LOT 12	2	16-S	29-E		3530	NORTH	200	WEST	EDDY

Bottom Hole Location If Different From Surface

UL or lot No.	Section	Township	Range	Lot Idn	Feet from the	North/South line	Feet from the	East/EAST line	County
LOT 12	3	16-S	29-E		3613	NORTH	330	WEST	EDDY

Dedicated Acres	Joint or Infill	Consolidation Code	Order No.
160			

NO ALLOWABLE WILL BE ASSIGNED TO THIS COMPLETION UNTIL ALL INTERESTS HAVE BEEN CONSOLIDATED
OR A NON-STANDARD UNIT HAS BEEN APPROVED BY THE DIVISION

<div><div>LOT 4 41.52 AC.</div><div>LOT 3 41.50 AC.</div><div>LOT 2 41.50 AC.</div><div>LOT 1 41.48 AC.</div><div>LOT 5 40.00 AC.</div><div>LOT 6 40.00 AC.</div><div>LOT 7 40.00 AC.</div><div>LOT 8 40.00 AC.</div><div>LOT 12 40.00 AC.</div><div>LOT 13 40.00 AC.</div><div>LOT 14 40.00 AC.</div><div>LOT 15 40.00 AC.</div><div>LOT 16 40.00 AC.</div></div> <div><div>LOT 4 41.52 AC.</div><div>LOT 3 41.61 AC.</div><div>LOT 2 41.69 AC.</div><div>LOT 1 41.78 AC.</div><div>LOT 5 40.00 AC.</div><div>LOT 6 40.00 AC.</div><div>LOT 7 40.00 AC.</div><div>LOT 8 40.00 AC.</div><div>LOT 12 40.00 AC.</div><div>LOT 11 40.00 AC.</div><div>LOT 10 40.00 AC.</div><div>LOT 9 40.00 AC.</div><div>LOT 13 40.00 AC.</div><div>LOT 14 40.00 AC.</div><div>LOT 15 40.00 AC.</div><div>LOT 16 40.00 AC.</div></div> <div><div>SECTION 3</div><div>SECTION 2</div></div> <div><div>3613'</div><div>3530'</div><div>200'</div></div> <div><div>PRODUCING AREA</div><div>GRID AZ. = 268°54'04"</div><div>HORZ. DIST. = 5132.8'</div><div>P.P.</div><div>SEE DETAIL</div></div> <div><div>SCALE: 1"=2000'</div></div> <div><div>GEODETIC COORDINATES</div><div>NAD 27 NME</div><div>SURFACE LOCATION</div><div>Y=711462.8 N</div><div>X=586009.7 E</div><div>LAT.=32.955569° N</div><div>LONG.=104.052932° W</div></div> <div><div>DETAIL</div><div>3748.9' 3750.2'</div><div>600'</div><div>3747.8' 3750.2'</div></div> <div><div>BOTTOM HOLE LOCATION</div><div>Y=711364.4 N</div><div>X=580879.1 E</div></div>	<div><div>OPERATOR CERTIFICATION</div><div>I hereby certify that the information herein is true and complete to the best of my knowledge and belief, and that this organization either owns a working interest or unleased mineral interest in the land including the proposed bottom hole location or has a right to drill this well at this location pursuant to a contract with an owner of such mineral or working interest, or to a voluntary pooling agreement or a compulsory pooling order heretofore entered by the division.</div><div><div></div><div>Signature</div></div><div><div>11/11/2011</div><div>Date</div></div><div><div>A. ARNOLD NALL</div><div>Printed Name</div></div></div> <div><div>SURVEYOR CERTIFICATION</div><div>I hereby certify that the well location shown on this plat was plotted from field notes of actual surveys made by me or under my supervision, and that the same is true and correct to the best of my belief.</div><div><div>DECEMBER 7, 2010</div><div>Date Surveyed</div></div><div><div>LA</div><div>Signature & Seal of Professional Surveyor</div></div><div><div></div><div>12/15/2010</div></div><div><div>Certificate No. GARY G. EIDSON 12641</div><div>RONALD J. EIDSON 3239</div></div></div>
---	--