

District I  
1625 N. French Dr., Hobbs, NM 88240  
District II  
1301 W. Grand Avenue, Artesia, NM 88210  
District III  
1000 Rio Brazos Rd., Aztec, NM 87410  
District IV  
1220 S. St. Francis Dr., Santa Fe, NM 87505

State of New Mexico  
Energy, Minerals & Natural Resources Department  
OIL CONSERVATION DIVISION  
1220 South St. Francis Dr.  
Santa Fe, NM 87505

Form C-402  
Revised October 12, 2005  
Submit to Appropriate District Office  
State Lease- 4 Copies  
Fee Lease- 3 Copies

☐ AMENDED REPORT

WELL LOCATION AND ACREAGE DEDICATION PLAT

API Number 30-015- <b>38959</b>	Pool Code 96832	Pool Name Sand Tank; Bone Spring <b>KZ</b>
Property Code 21095	Property Name <b>SAND TANK 18 FED. COM</b>	Well Number <b>5H</b>
OGRID No. 7377	Operator Name <b>EOG RESOURCES, INC.</b>	Elevation <b>3511.0'</b>

Surface Location

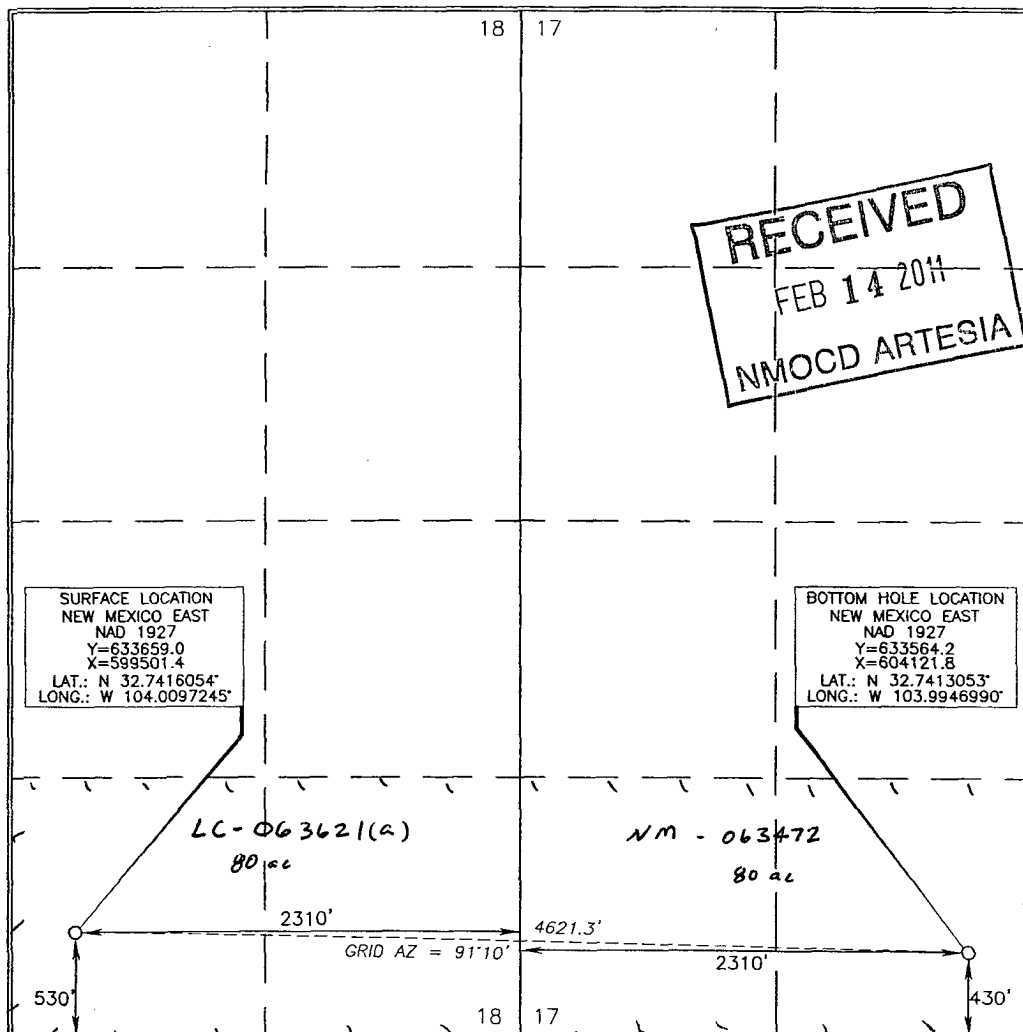
UL or lot no.	Section	Township	Range	Lot Idn	Feet from the	North/South line	Feet from the	East/West line	County
<b>O</b>	<b>18</b>	<b>18 SOUTH</b>	<b>30 EAST, N.M.P.M.</b>		<b>530'</b>	<b>SOUTH</b>	<b>2310'</b>	<b>EAST</b>	<b>EDDY</b>

Bottom Hole Location If Different From Surface

UL or lot no.	Section	Township	Range	Lot Idn	Feet from the	North/South line	Feet from the	East/West line	County
<b>N</b>	<b>17</b>	<b>18 SOUTH</b>	<b>30 EAST, N.M.P.M.</b>		<b>430'</b>	<b>SOUTH</b>	<b>2310'</b>	<b>WEST</b>	<b>EDDY</b>

Dedicated Acres <b>160</b>	Joint or Infill	Consolidation Code	Order No.
-------------------------------	-----------------	--------------------	-----------

No allowable will be assigned to this completion until all interests have been consolidated or a non-standard unit has been approved by the division.



OPERATOR CERTIFICATION

I hereby certify that the information contained herein is true and complete to the best of my knowledge and belief, and that this organization either owns a working interest or unleased mineral interest in the land including the proposed bottom hole location or has a right to drill this well at this location pursuant to a contract with an owner of such a mineral or working interest, or to a voluntary pooling agreement or a compulsory pooling order heretofore entered by the division.

*Don D. Mue* 10/13/10  
Signature Date

**Donny G. Glanton**  
Printed Name

SURVEYOR CERTIFICATION

I hereby certify that the well location shown on this plat was plotted from field notes of actual surveys made by me or under my supervision, and that the same is true and correct to the best of my belief.

**15079**  
Date of Survey **7/7/2008**

Signature and Seal of Professional Surveyor

*Terry J. Paul* 7/7/2008  
Certificate Number **15079**

WO# 080702WL-b (KA)