

## DISTRICT I

1625 N. French Dr., Hobbs, NM 88240

## DISTRICT II

1301 W. Grand Avenue, Artesia, NM 88210

## DISTRICT III

1000 Rio Brazos Rd., Aztec, NM 87410

## DISTRICT IV

1220 S. St. Francis Dr., Santa Fe, NM 87505

State of New Mexico  
Energy, Minerals and Natural Resources Department

Form C-102

Revised July 16, 2010

Submit one copy to appropriate  
District Office

## OIL CONSERVATION DIVISION

1220 South St. Francis Dr.  
Santa Fe, New Mexico 87505

## WELL LOCATION AND ACREAGE DEDICATION PLAT

☐ AMENDED REPORT

API Number <b>30-015-38637</b>	Pool Code <b>97565</b>	Pool Name <b>NORTH SEVEN RIVERS GLORIETTA YESO</b>
Property Code <b>38666</b>	Property Name <b>WYATT DRAW "24/25" NF FEDERAL COM</b>	Well Number <b>1H</b>
OGRID No. <b>14744</b>	Operator Name <b>MEWBOURNE OIL COMPANY</b>	Elevation <b>3397'</b>

## Surface Location

UL or lot No.	Section	Township	Range	Lot Idn	Feet from the	North/South line	Feet from the	East/West line	County
<b>K</b>	<b>24</b>	<b>19 S</b>	<b>25 E</b>		<b>1650</b>	<b>SOUTH</b>	<b>2290</b>	<b>WEST</b>	<b>EDDY</b>

## Bottom Hole Location If Different From Surface

UL or lot No.	Section	Township	Range	Lot Idn	Feet from the	North/South line	Feet from the	East/West line	County
<b>F</b>	<b>25</b>	<b>19 S</b>	<b>25 E</b>		<b>2310</b>	<b>NORTH</b>	<b>2290</b>	<b>WEST</b>	<b>EDDY</b>

Dedicated Acres	Joint or Infill	Consolidation Code	Order No.
<b>120</b>			

NO ALLOWABLE WILL BE ASSIGNED TO THIS COMPLETION UNTIL ALL INTERESTS HAVE BEEN CONSOLIDATED  
OR A NON-STANDARD UNIT HAS BEEN APPROVED BY THE DIVISION

RECEIVED

MAR 14 2011

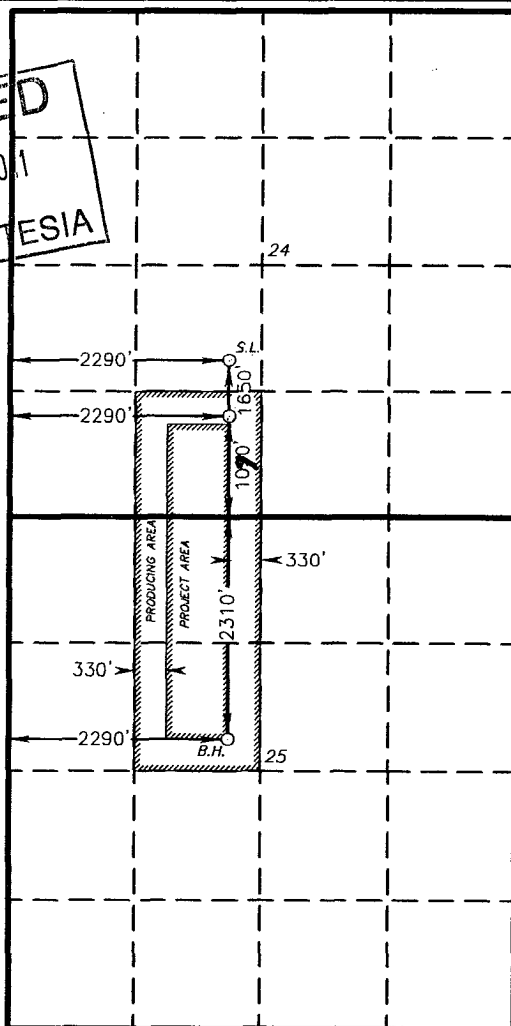
NMOCD ARTESIA

## SURFACE LOCATION

Lat - N 32°38'35.97"  
Long - W 104°26'19.72"  
NMSPCE- N 597769.494  
E 467532.786  
(NAD-27)

PROPOSED BOTTOM  
HOLE LOCATION

Lat - N 32°37'56.79"  
Long - W 104°26'20.05"  
NMSPCE- N 593809.364  
E 467500.837  
(NAD-27)



## OPERATOR CERTIFICATION

I hereby certify that the information contained herein is true and complete to the best of my knowledge and belief, and that this organization either owns a working interest or unleased mineral interest in the land including the proposed bottom hole location or has a right to drill this well at this location pursuant to a contract with an owner of such a mineral or working interest, or to a voluntary pooling agreement or a compulsory pooling order heretofore entered by the division.

*Jackie Lathan* 12/7/10  
Signature Date

*Jackie Lathan*  
Printed Name

*jathan@mewbourne.com*  
Email Address

## SURVEYOR CERTIFICATION

I hereby certify that the well location shown on this plat was plotted from field notes of actual surveys made by me or under my supervision, and that the same is true and correct to the best of my belief.

*GARY L. JONES* 2010  
Date Surveyed

*GARY L. JONES*  
Signature & Seal of Professional Surveyor

*GARY L. JONES*  
Professional Land Surveyor

*GARY L. JONES* 2248  
Certificate No.

Certificate No. Gary L. Jones 7977

BASIN SURVEYS 23248