

30-015-38975

BURNETT OIL CO., INC. EMERGENCY NOTIFICATION LIST

Burnett's New Mexico Office (575) 677-2313
Belton Mathews BOCI District Superintendent CELL (575) 703-9601
BURNETT OIL HOME OFFICE (817) 332-5108
Mark Jacoby BOCI ENGINEERING MANAGER CELL (817) 312- 2751

EDDY COUNTY SHERIFF 911 OR (575) 746-9888
NEW MEXICO STATE POLICE (575) 746-2701

Loco Hills Fire Department (VOLUNTEER ONLY) 911 OR (575) 677 2349
For Medical and Fire (575) 746-2701 (ARTESIA)

Flight for Life Air Ambulance (LUBBOCK) (806) 743-9911
Aerocare Air Ambulance (LUBBOCK) (806) 747-8923
Med Flight Air Ambulance (ALBUQ) (505) 842-4433
S B Med Svc Air Ambulance (ALBUQ) (505) 842-4949

US Bureau of Land Management Carlsbad (575) 361-2822 (575) 234-5972
New Mexico Oil Conversation Division ARTESIA (575) 748-1283
New Mexico Emergency Response Commission 24 HR (575) 827-9126
New Mexico State Emergency Operation Center (575) 476-9635
Local Emergency Planning Committee (Artesia) (575) 746-2122
National Emergency Response Center (Washington, DC) (800) 424-8802

Boots & Coots IWC (800) 256-9688
Cudd Pressure Control (432) 570-5300
Halliburton Svc (575) 746-2757
B J Svc (575) 746-2293

THIS MUST BE POSTED AT THE RIG WHILE ON LOCATION.

Burnett Office 87 SQUARE LAKE ROAD (CR #220), Loco Hills, New Mexico 88255
(Loco Hills, New Mexico (2 MILES East of Loco Hills On US Hwy 82 TO C#220 Then North On CR# 220 Approx One Mile To Office.).

DRILLING EXHIBIT A
[

HYDROGEN SULFIDE (H2S) CONTINGENCY PLAN

ASSUMED 100 PPM ROE = 3000'

HOBBS OCD

APR 25 2011

Emergency Procedures

In the event of a release of gas containing H2S, The first responder(s) must

- * Isolate the area and prevent entry by other persons into the 100 PPM ROE.
- * Evacuate any public places encompassed by 100 PPM ROE.
- * Be equipped with H2S monitors and air packs in order to control release.
- * Use the "buddy system" to ensure no injuries occur during the response.
- * Take precautions to avoid personal injury during this operation.
- * Have received training in the following:
 1. H2S detection
 2. Measures for protection against this gas
 3. Equipment used for protection and emergency response.

RECEIVED

Ignition of Gas Source

Should control of the well be considered lost and ignition considered, take care to protect against exposure to Sulfur Dioxide (SO2.) Intentional ignition must be coordinated with the NMOCD and local officials. Additionally the New Mexico State Police may become involved. NM State Police shall be the incident command on scene of any major release. Take care to protect downwind whenever there is an ignition of gas.

Characteristics of H2S and SO2

Common Name	Chemical Formula	Specific Gravity	Threshold Limit	Hazardous Limit	Lethal Concentration
Hydrogen Sulfide	H2S	1.189 Air = 1	10 ppm	100 ppm/hr	600 ppm
Sulfur Dioxide	SO2	2.21 Air = 1	2 ppm	NA	1000 ppm

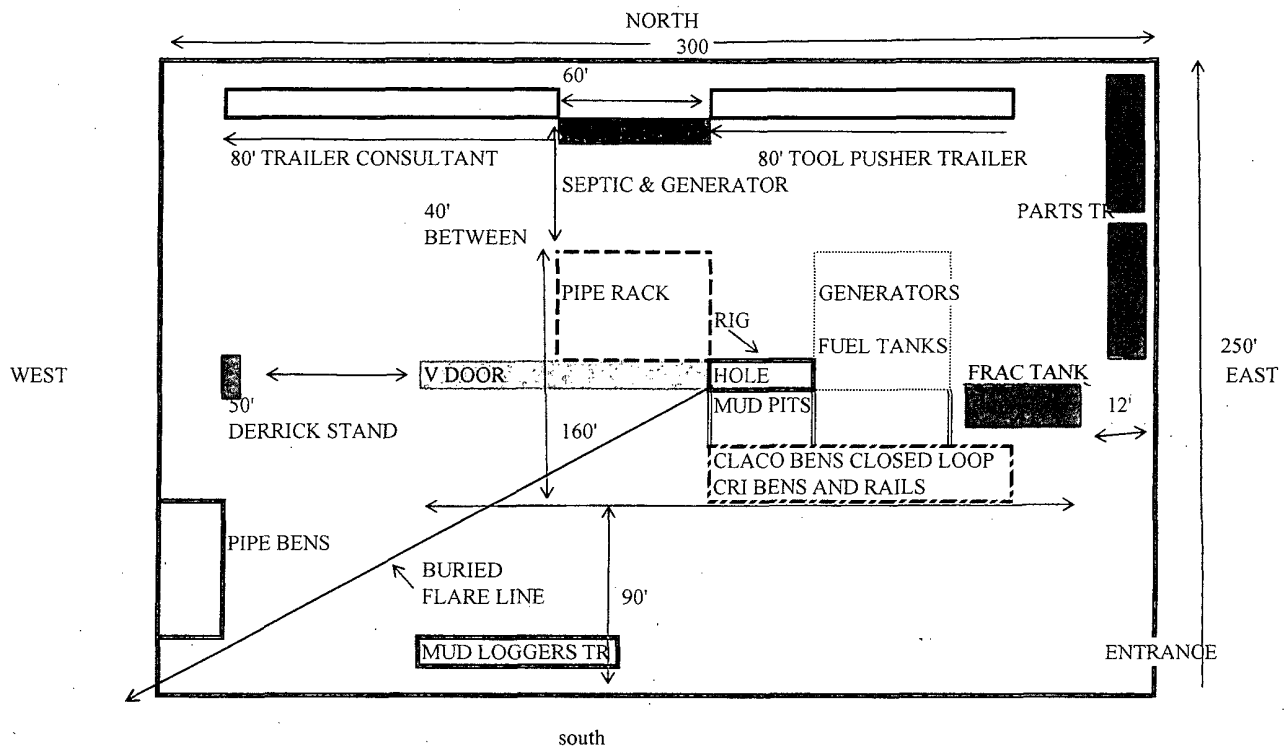
Contacting Authorities

Burnett Oil Co., Inc. personal must liaison with local and state agencies to ensure a proper response to a major release. Additionally, the OCD must be notified of the release as soon as possible but no later than 4 hours. Agencies will ask for information such as type and volume of release, wind and direction, location of release, etc. **Be sure all is written down and ready to give to contact list (Drilling Exhibit A.) Directions to the site are below.** Burnett's response must be in coordination with the State of New Mexico's Hazardous Materials Emergency Response Plan.

**Burnett Office 87 SQUARE LAKE ROAD (CR #220), Loco Hills, New Mexico 88255
(Loco Hills, New Mexico (2 MILES East of Loco Hills On US Hwy 82 TO C#220 Then North On CR# 220 Approx One Mile To Office**

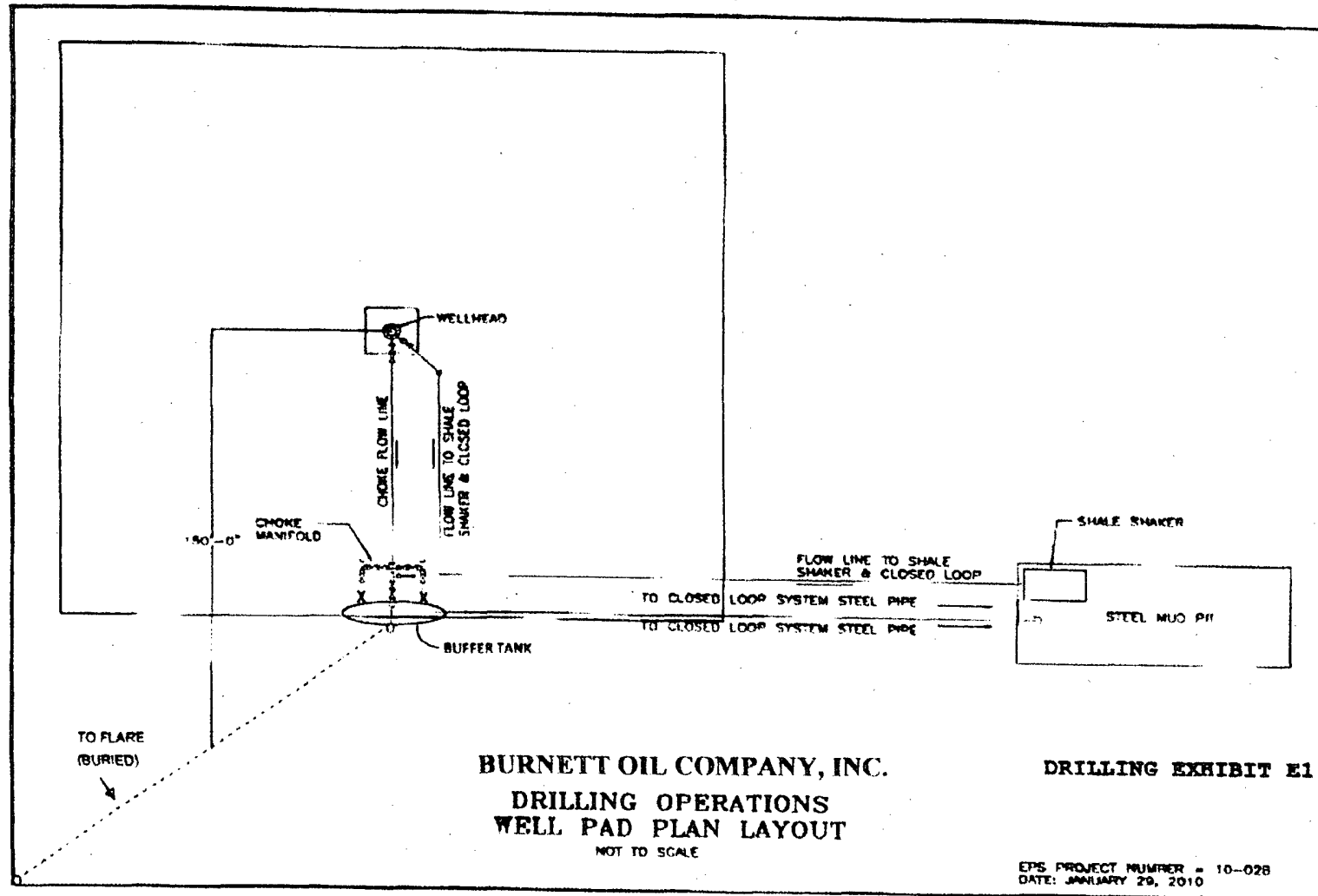
BURNETT OIL CO., INC.

DRILLING EXHIBIT B

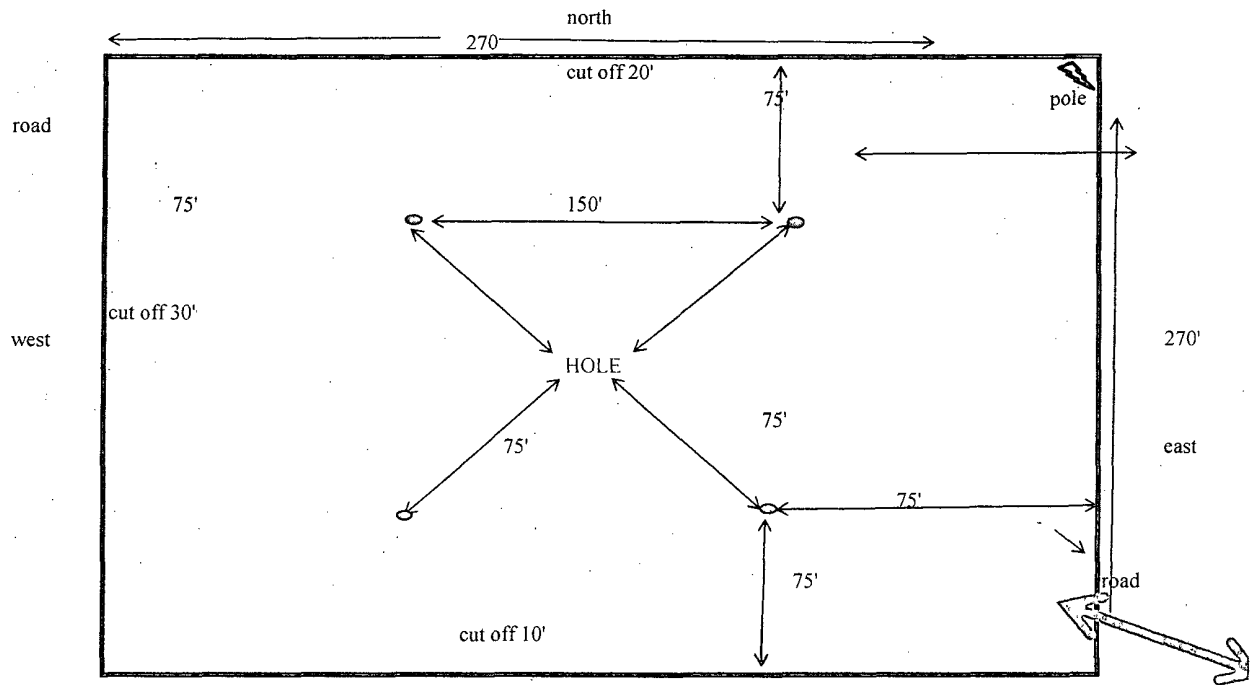


Gissler B 66 Rig Layout

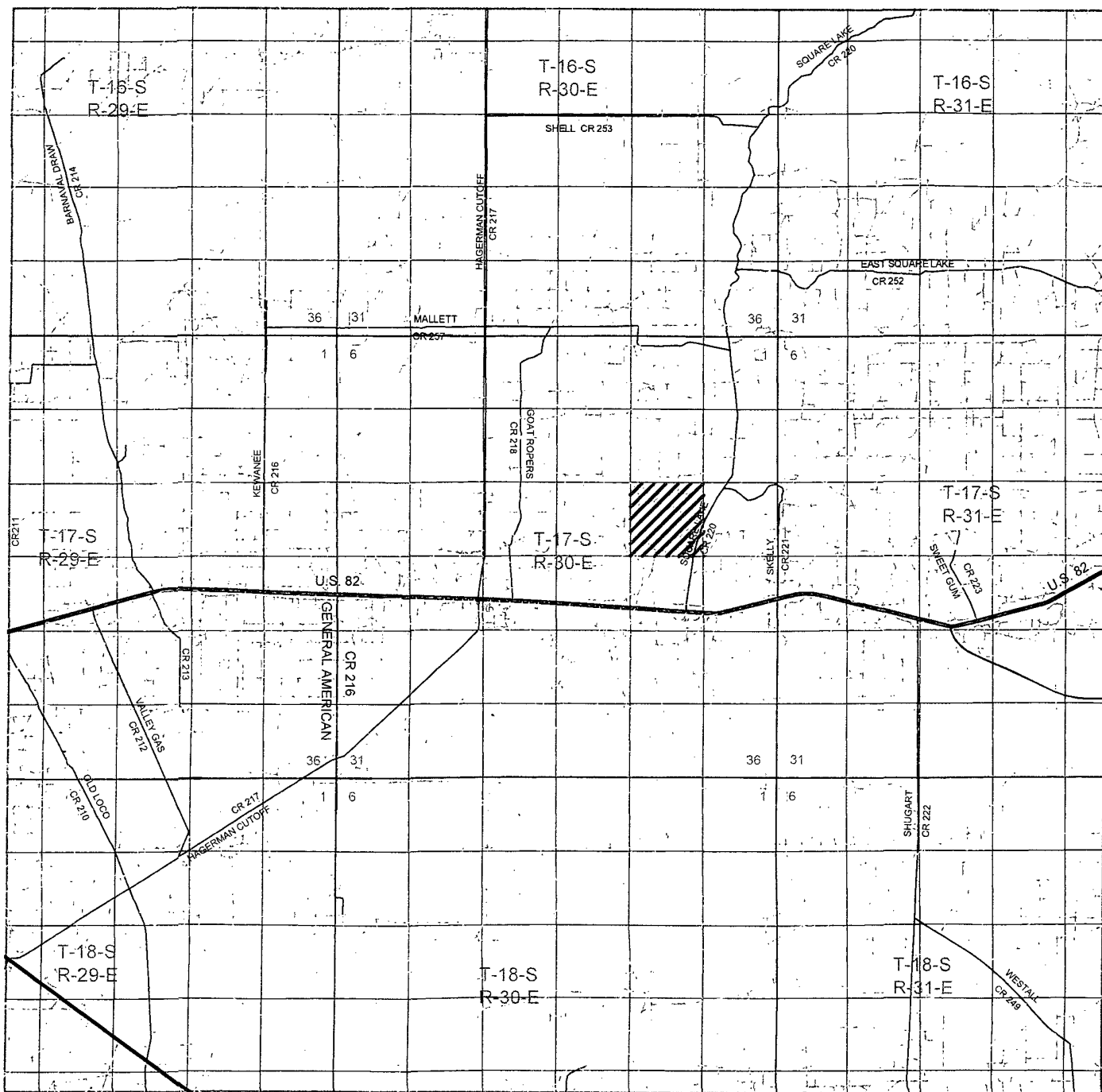
SURFACE EXHIBIT D



Saved as: S:\prod\lecille\mark stuff\well pad plan layout



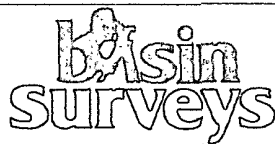
south Gissler B 66 Reclamation Exhibit F



SURFACE EXHIBIT A

GISSLER "B" #66

Located 380' FNL and 1800' FWL
 Section 14, Township 17 South, Range 30 East,
 N.M.P.M., Eddy County, New Mexico.



P.O. Box 1786
 1120 N. West County Rd.
 Hobbs, New Mexico 88241
 (575) 393-7316 - Office
 (575) 392-2206 - Fax
 basinsurveys.com

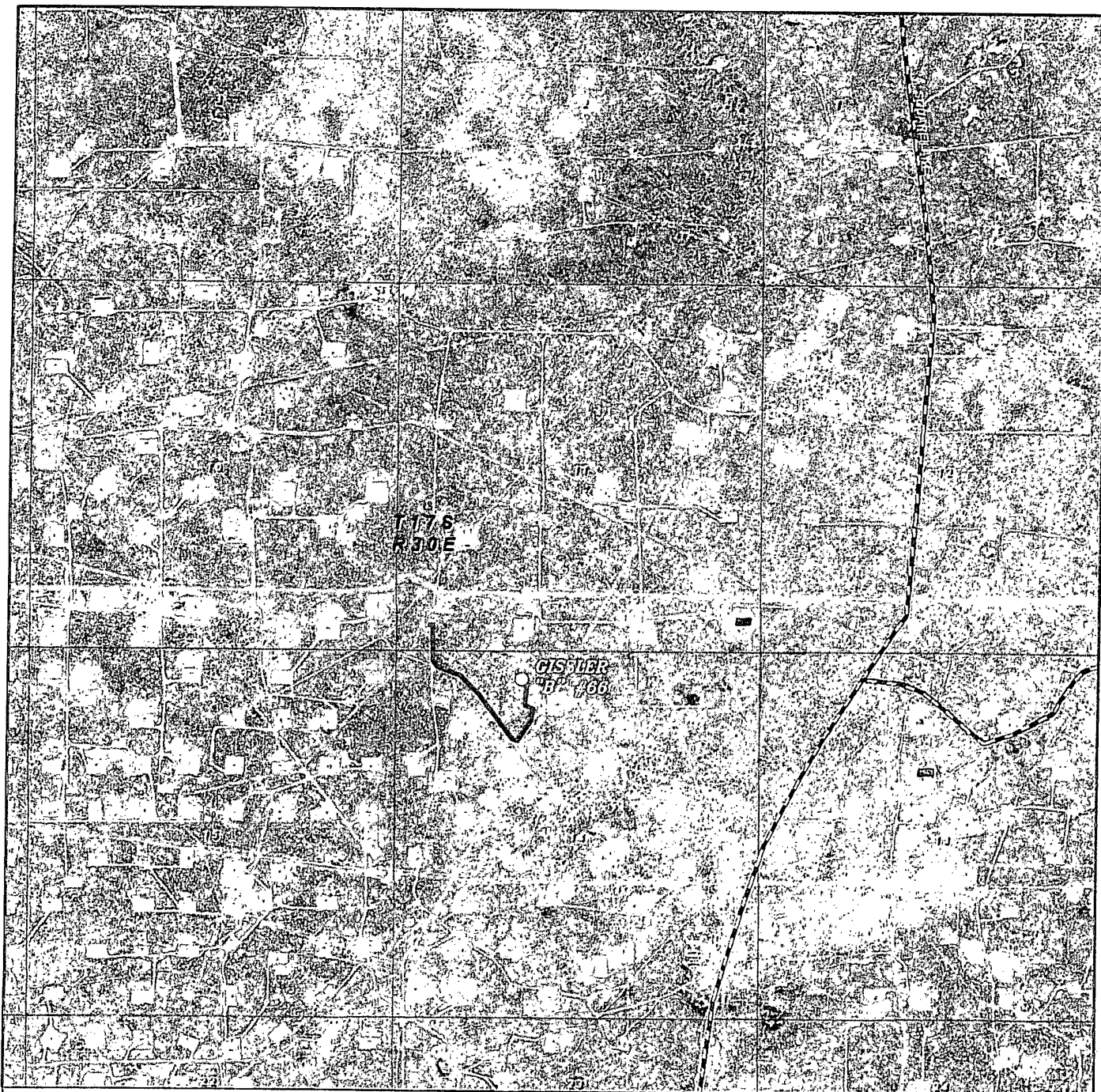
W.O. Number: KJG 23945

Survey Date: 01-04-2011

Scale: 1" = 2 Miles

Date: 01-24-2011

**BURNETT OIL
 COMPANY, INC.**



PROP. GISSLER "B" #66 LOCATION AND FLOWLINE

Located 380' FNL and 1800' FWL

*Section 14, Township 17 South, Range 30 East,
N.M.P.M., Eddy County, New Mexico.*

SURFACE EXHIBIT A2

basin
surveys

*focused on excellence
in the oilfield*

P.O. Box 1786
1120 N. West County Rd.
Hobbs, New Mexico 88241
(575) 393-7316 - Office
(575) 392-2206 - Fax
basinsurveys.com

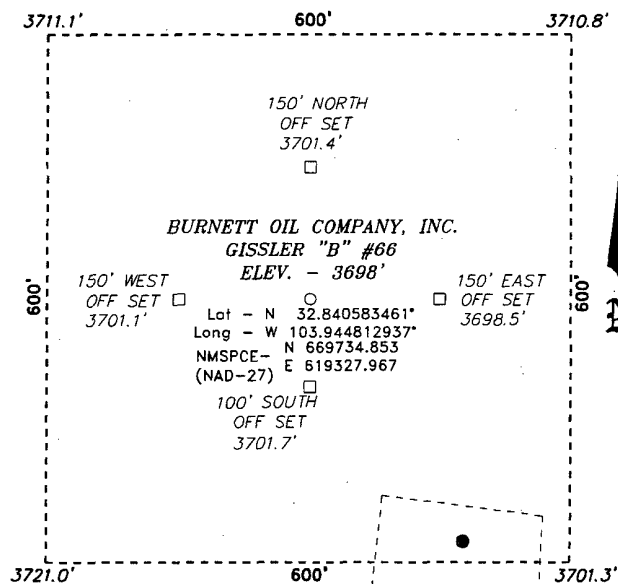
W.O. Number. KJG 23945

Scale: 1" = 2000'

YELLOW TINT - USA LAND
BLUE TINT - STATE LAND
NATURAL COLOR - FEE LAND

**BURNETT OIL
COMPANY, INC.**

GISSLER "B"
BATTERY



FROM THE JUNCTION OF HWY 82 AND SQUARE LAKE,
GO NORTH ON SQUARE LAKE FOR APPROX. 1.2
MILES TO LEASE ROAD, THEN WESTERLY ON LEASE
ROAD FOR APPROX. 1.0 MILE, THEN NORTH FOR 0.1
MILE TO THE GISSLER "B" BATTERY AND PROPOSED
LEASE ROAD.

W.O. Number: 23945

Drawn By: K. GOAD

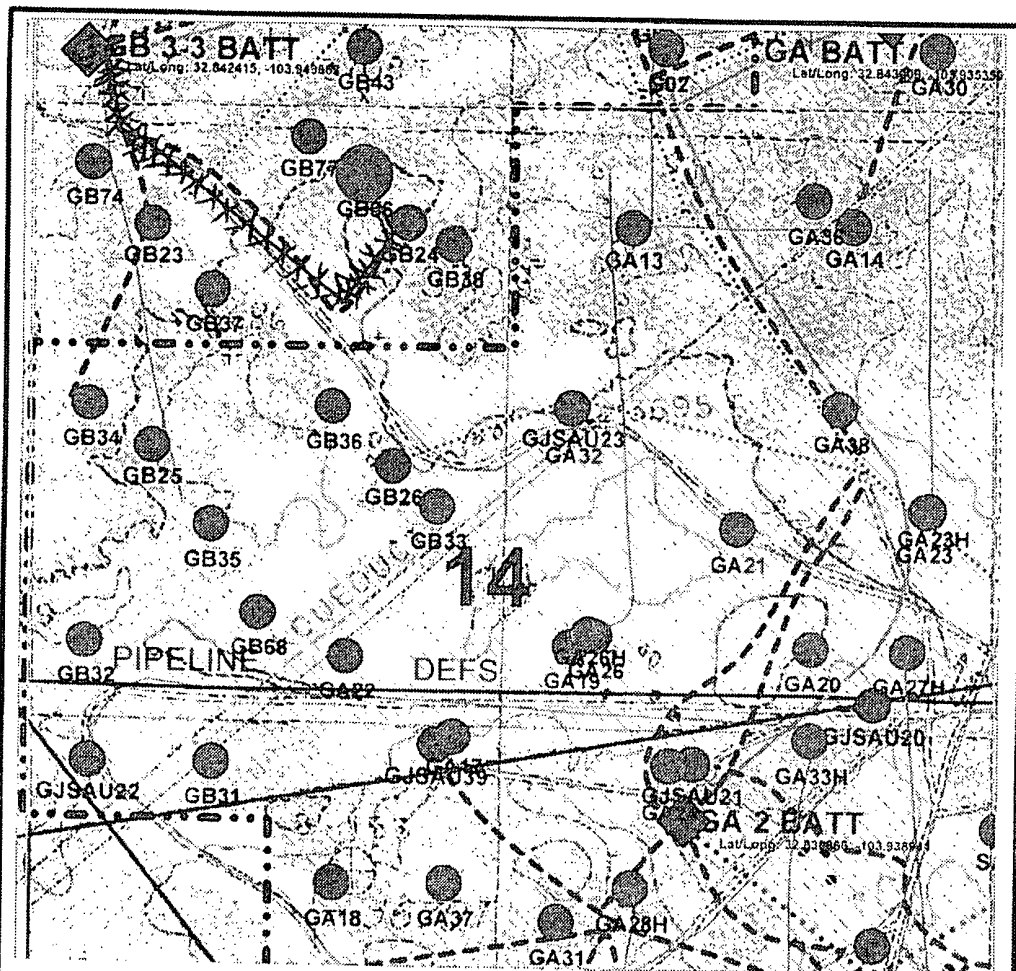
Date: 01-24-2011	Disk: KJG 23945
------------------	-----------------

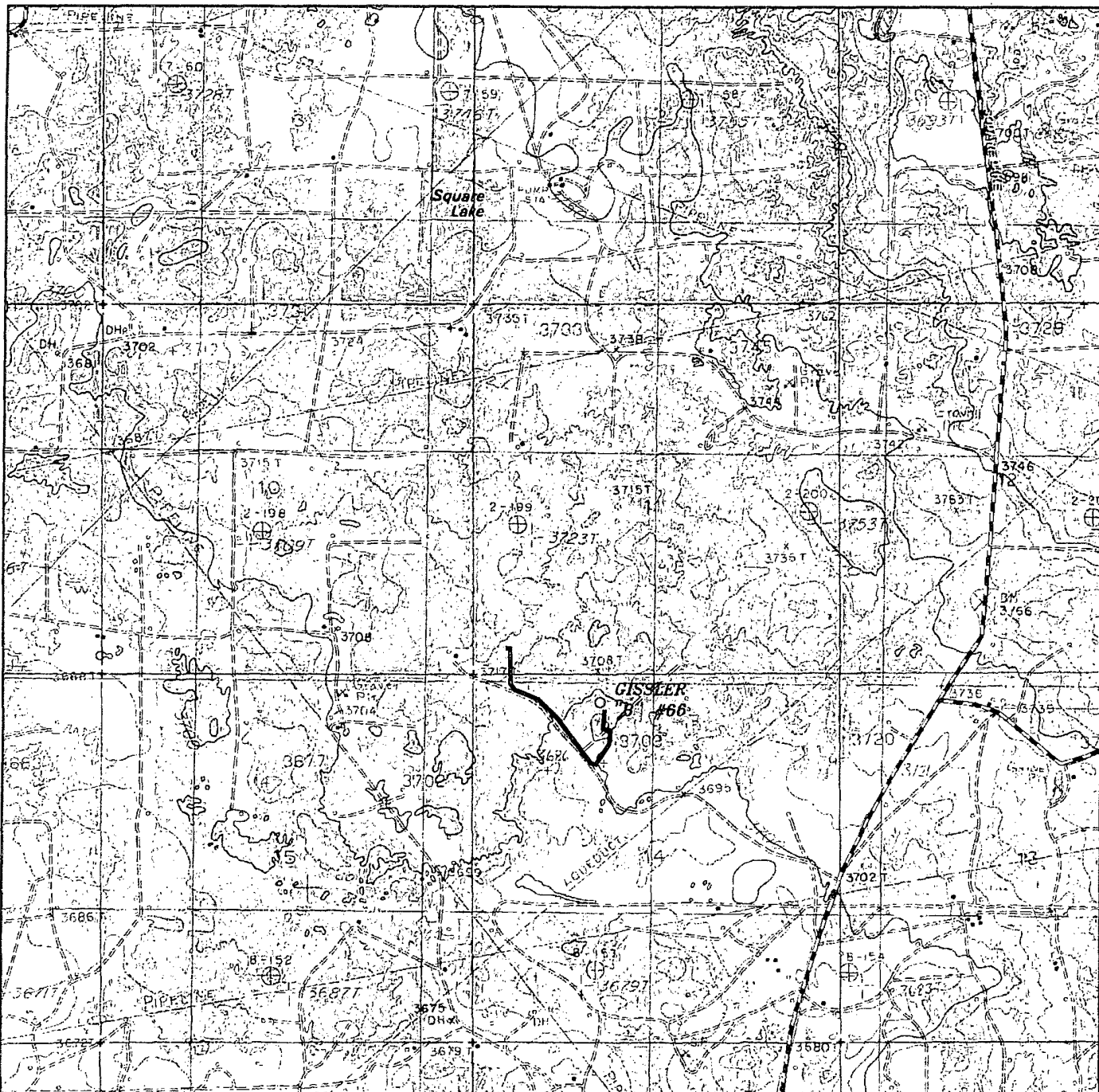
REF: GISSLER "B" #69 / WELL PAD TOPO

THE GISSLER "B" #66 LOCATED 380'

FROM THE NORTH LINE AND 1800' FROM THE WEST LINE OF
SECTION 14, TOWNSHIP 17 SOUTH, RANGE 30 EAST,
N.M.P.M., EDDY COUNTY, NEW MEXICO.

Survey Date: 01-04-2011 Sheet 1 of 1 Sheets

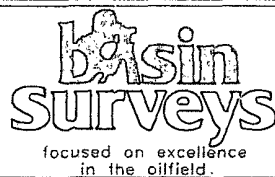




GISSLER "B" #66

SURFACE EXHIBIT A1

*Located 380' FNL and 1800' FWL
Section 14, Township 17 South, Range 30 East,
N.M.P.M., Eddy County, New Mexico.*



P.O. Box 1786
1120 N. West County Rd.
Hobbs, New Mexico 88241
(575) 393-7316 - Office
(575) 392-2206 - Fax
basinsurveys.com

W.O. Number: KJG 23945

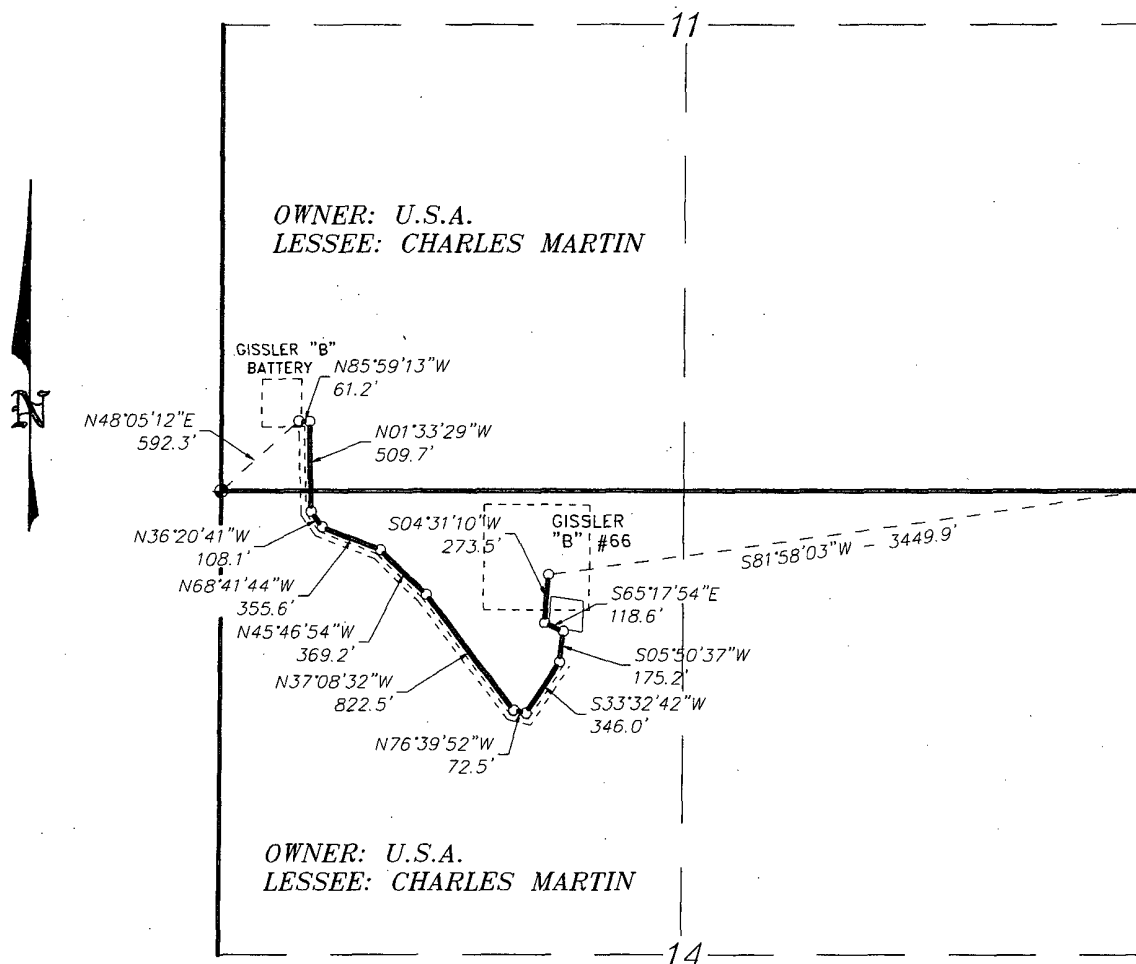
Survey Date: 01-04-2011

Scale: 1" = 2000'

Date: 01-24-2011

**BURNETT OIL
COMPANY, INC.**

SECTIONS 11&14, TOWNSHIP 17 SOUTH, RANGE 30 EAST, N.M.P.M.,
EDDY COUNTY, NEW MEXICO.



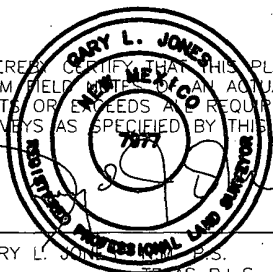
LEGAL DESCRIPTION

A STRIP OF LAND 30.0 FEET WIDE, LOCATED IN SECTIONS 11&14, TOWNSHIP 17 SOUTH, RANGE 30 EAST, N.M.P.M., EDDY COUNTY, NEW MEXICO AND BEING 15.0 FEET LEFT AND RIGHT OF THE ABOVE PLATTED CENTERLINE SURVEY.

SECTION 11 = 452.6 FEET = 27.43 RODS = 0.09 MILES = 0.31 ACRES
SECTION 14 = 2759.5 FEET = 167.24 RODS = 0.52 MILES = 1.90 ACRES
TOTAL = 3212.1 FEET = 194.67 RODS = 0.61 MILES = 2.21 ACRES

SURFACE EXHIBIT C2

I HEREBY CERTIFY THAT THIS PLAT WAS PREPARED FROM FIELD NOTES OF AN ACTUAL SURVEY AND MEETS OR EXCEEDS ALL REQUIREMENTS FOR LAND SURVEYS AS SPECIFIED BY THIS STATE.



GARY L. JONES, P.S.,
TEXAS P.L.S.

No. 7977
No. 5074

BASIN SURVEYS P.O. BOX 1786-HOBBS, NEW MEXICO

W.O. Number: 23945 Drawn By: K. GOAD

Date: 01-24-2011 Disk: KJG - 23945WELL.DWG

1000 0 1000 2000 FEET

BURNETT OIL COMPANY, INC.

REF: PROPOSED FLOWLINE TO THE GISSLER "B" #66

A FLOWLINE CROSSING USA LAND IN
SECTIONS 11&14, TOWNSHIP 17 SOUTH, RANGE 30 EAST,
N.M.P.M., EDDY COUNTY, NEW MEXICO.

Survey Date: 01-04-2011 Sheet 1 of 1 Sheets