

District I
1625 N. French Dr., Hobbs, NM 88240
District II
1301 W. Grand Avenue, Artesia, NM 88210
District III
1000 Rio Brazos Rd., Aztec, NM 87410
District IV
1220 S. St. Francis Dr., Santa Fe, NM 87505

State of New Mexico
Energy, Minerals & Natural Resources Department
OIL CONSERVATION DIVISION
1220 South St. Francis Dr.
Santa Fe, NM 87505

Form C-102
Revised October 12, 2005
Submit to Appropriate District Office
State Lease- 4 Copies
Fee Lease- 3 Copies

☐ AMENDED REPORT

WELL LOCATION AND ACREAGE DEDICATION PLAT

API Number 30-015-36059	Pool Code 975-12	Pool Name Rio Penasco - (Wolfcamp)
Property Code 36958	Property Name LLANO 1 FED.	Well Number 1H
OGRID No. 7377	Operator Name EOG RESOURCES, INC.	Elevation 3872'

Surface Location

OCD-ARTESIA

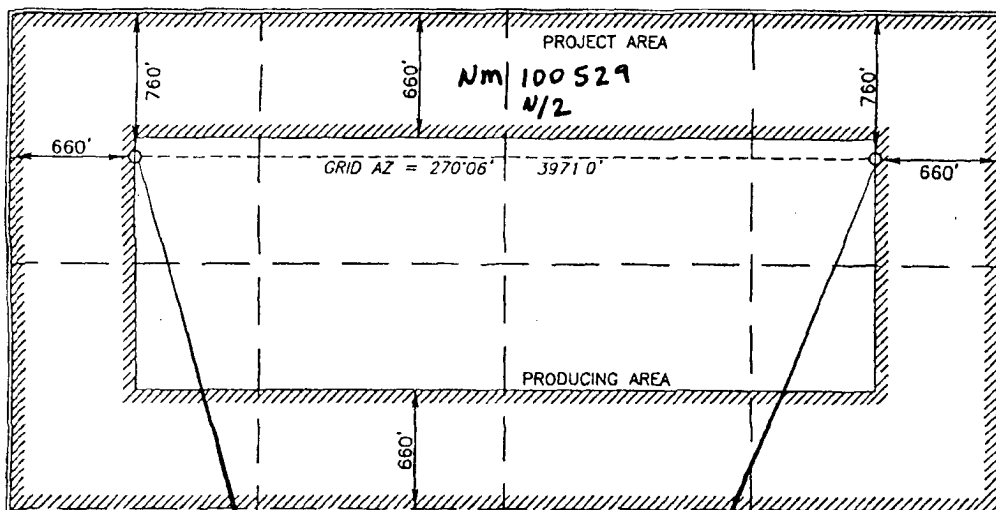
UL or lot no.	Section	Township	Range	Lot Idn	Feet from the	North/South line	Feet from the	East/West line	County
A	1	18 SOUTH	23 EAST, N.M.P.M.		760'	NORTH	660'	EAST	EDDY

Bottom Hole Location If Different From Surface

UL or lot no.	Section	Township	Range	Lot Idn	Feet from the	North/South line	Feet from the	East/West line	County
D	1	18 SOUTH	23 EAST, N.M.P.M.		827	NORTH	741	WEST	EDDY

Dedicated Acres 320	Joint or Infill	Consolidation Code	Order No.
------------------------	-----------------	--------------------	-----------

No allowable will be assigned to this completion until all interests have been consolidated or a non-standard unit has been approved by the division.



BOTTOM HOLE LOCATION
NEW MEXICO EAST
NAD 1927
Y=648430.4
X=402280.0
LAT.: N 32.7822226°
LONG.: W 104.6512927°

SURFACE LOCATION
NEW MEXICO EAST
NAD 1927
Y=648423.1
X=406251.1
LAT.: N 32.7822347°
LONG.: W 104.6383718°

OPERATOR CERTIFICATION

I hereby certify that the information contained herein is true and complete to the best of my knowledge and belief, and that this organization either owns a working interest or unleased mineral interest in the land including the proposed bottom hole location or has a right to drill this well at this location pursuant to a contract with an owner of such a mineral or working interest, or to a voluntary pooling agreement or a compulsory pooling order heretofore entered by the division.

Don D. Murr 8/16/2007
Signature Date

Donny G. Glanton
Printed Name

SURVEYOR CERTIFICATION

I hereby certify that the well location shown on this plat was plotted from field notes of actual surveys made by me or under my supervision, and that the same is true and correct to the best of my belief.

15079
Date of Survey
August 14, 2007

Signature of Professional Surveyor

Terry G. Paul 8/6/2007
Certificate Number 15079

WO# 070614WL-b (JL)