

DISTRICT I
1625 N. French Dr., Hobbs, NM 88240

DISTRICT II
1301 W. Grand Avenue, Artesia, NM 88210

DISTRICT III
1000 Rio Brazos Rd., Aztec, NM 87410

DISTRICT IV
1220 S. St. Francis Dr., Santa Fe, NM 87505

State of New Mexico
Energy, Minerals and Natural Resources Department

Form C-102
Revised October 15, 2009

Submit one copy to appropriate
District Office

OIL CONSERVATION DIVISION
1220 South St. Francis Dr.
Santa Fe, New Mexico 87505

WELL LOCATION AND ACREAGE DEDICATION PLAT

☒ AMENDED REPORT

API Number 30-015-37805	Pool Code 96403.30215	Pool Name Hay Hollow Wildcat, Bone Spring LPK
Property Code 38142	Property Name SKEEN "34" STATE COM	Well Number 1H
OGRID No. 147179	Operator Name CHESAPEAKE OPERATING CO.	Elevation 3052'

Surface Location

UL or lot No.	Section	Township	Range	Lot Idn	Feet from the	North/South line	Feet from the	East/West line	County
LOT 3	34	26 S	28 E		315	SOUTH	1670	EAST	EDDY

Bottom Hole Location If Different From Surface

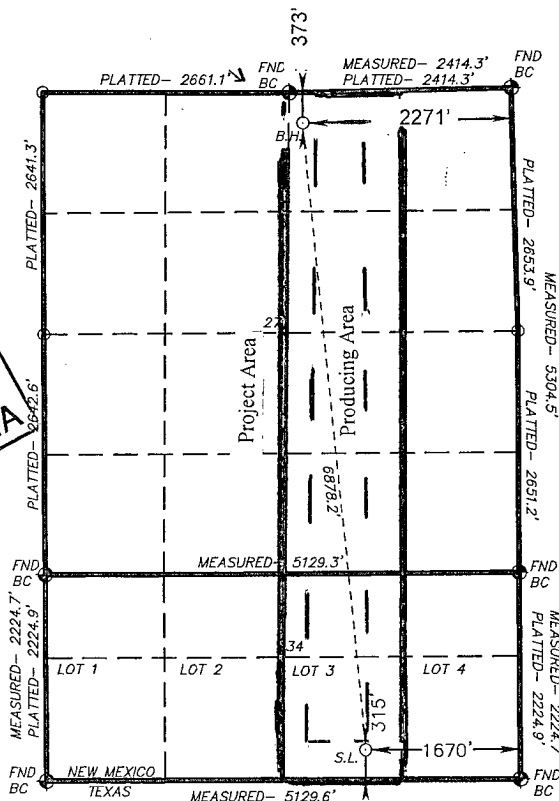
UL or lot No.	Section	Township	Range	Lot Idn	Feet from the	North/South line	Feet from the	East/West line	County
B	27	26 S	28 E		373	NORTH	2271	EAST	EDDY

Dedicated Acres 226.61 → 223.83	Joint or Infill	Consolidation Code	Order No. MSL-6224-A
------------------------------------	-----------------	--------------------	-------------------------

NO ALLOWABLE WILL BE ASSIGNED TO THIS COMPLETION UNTIL ALL INTERESTS HAVE BEEN CONSOLIDATED
OR A NON-STANDARD UNIT HAS BEEN APPROVED BY THE DIVISION

PROPOSED BOTTOM
HOLE LOCATION

Lat - N 32.01969007°
Long - W 104.0742623°
NMSPCE - N 370998.409
E 621629.384
(NAD-83)



OPERATOR CERTIFICATION

I hereby certify that the information contained herein is true and complete to the best of my knowledge and belief, and that this organization either owns a working interest or unleased mineral interest in the land including the proposed bottom hole location or has a right to drill this well at this location pursuant to a contract with an owner of such a mineral or working interest, or to a voluntary pooling agreement or a compulsory pooling order heretofore entered by the division.

Signature: *Bryan Arrant* Date: 4/7/2011

Bryan Arrant

Printed Name

SURVEYOR CERTIFICATION

I hereby certify that the well location shown on this plat was plotted from field notes of actual surveys made by me or under my supervision, and that the same is true and correct to the best of my belief.

Date Surveyed: *4/7/2011*
Signature & Seal of Professional Surveyor: *MARY L. JONES*

Certificate No. Gary L. Jones 7977

BASIN SURVEYS

ACTUAL BOTTOM-HOLE LOCATION