

NEW MEXICO OIL CONSERVATION COMMISSION
WELL LOCATION AND ACREAGE DEDICATION PLAT

JUL 14 1980

Form 1-1-77
Supersedes C-128
Effective 1-1-75

O. C. D.

All distances must be from the outer boundaries of the Section

ARTESIA, OFFICE

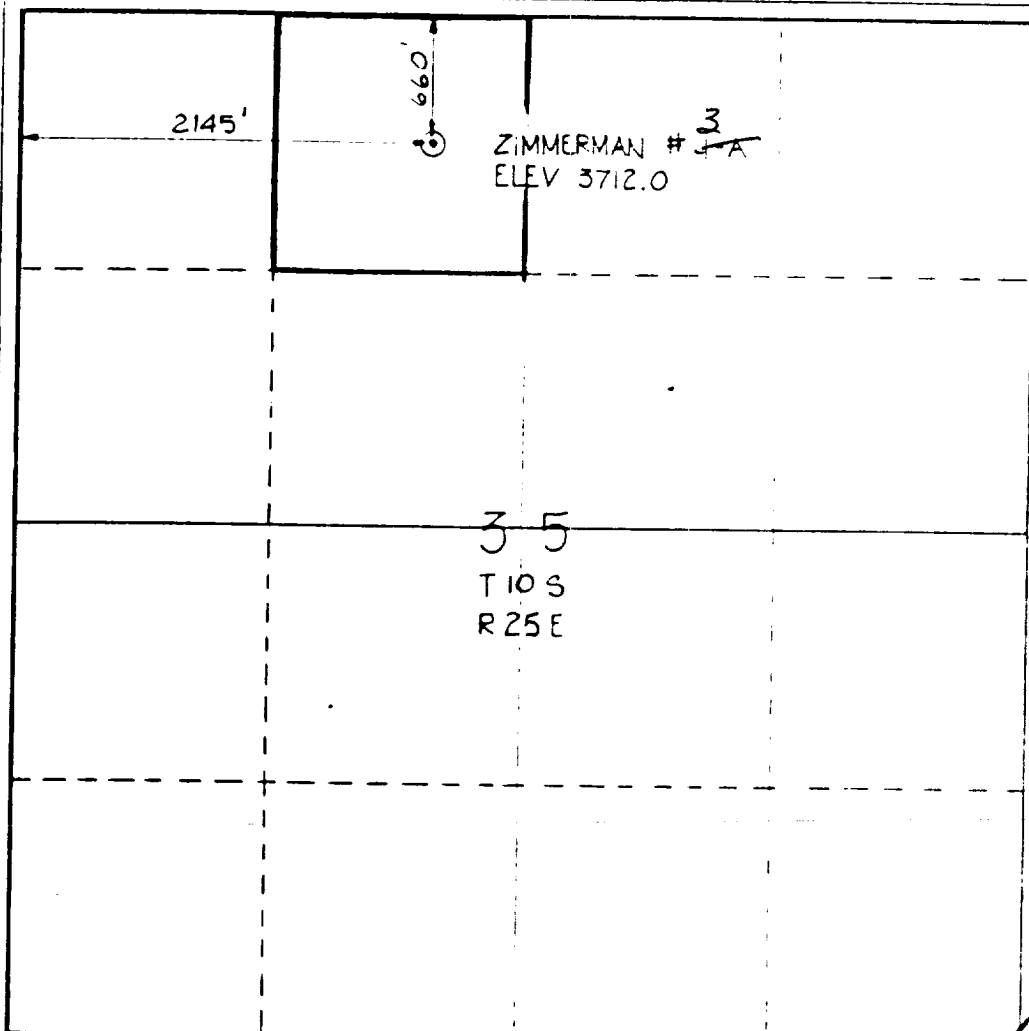
Operator CHARLES W. HARLE		Lease Zimmerman		Well No. 3	
Unit Letter C	Section 35	Township 10 South	Range 25 East	County Chaves County	
Actual Footage Location of Well: 2145.0 feet from the west line and 660.0 feet from the north line					
Ground Level Elev. 3712.00	Producing Formation SAN ANDRES		Well Name SOUTH BITTERLAKE		Delivered Acceptor 40

1. Outline the acreage dedicated to the subject well by colored pencil or hatchure marks on the plat below.
2. If more than one lease is dedicated to the well, outline each and identify the ownership thereof (both as to working interest and royalty).
3. If more than one lease of different ownership is dedicated to the well, have the interests of all owners been consolidated by communitization, unitization, force-pooling, etc?

☐ Yes ☐ No If answer is "yes," type of consolidation _____

If answer is "no," list the owners and tract descriptions which have actually been consolidated. (Use reverse side of this form if necessary.) _____

No allowable will be assigned to the well until all interests have been consolidated (by communitization, unitization, forced-pooling, or otherwise) or until a non-standard unit, eliminating such interests, has been approved by the Commission.



CERTIFICATION

I hereby certify that the information contained herein is true and complete to the best of my knowledge and belief.

Charles W. Harle

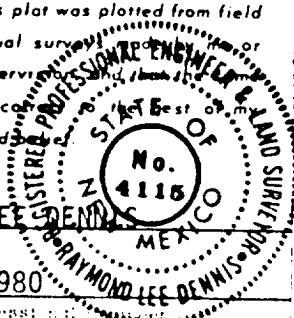
CHARLES W. HARLE

President

Reef Production Company

July 8, 1980

I hereby certify that the well location shown on this plat was plotted from field notes of actual survey, or under my supervision, and that the same is true and correct to the best of my knowledge and belief.



RAYMOND LEE DENNIS

July 8, 1980

Professional Engineer

Raymond Lee Dennis
4115