

NEW MEXICO OIL CONSERVATION COMMISSION

Santa Fe, New Mexico

30-005-00148

NOTICE OF INTENTION TO DRILL OR RECOMPLETE

Notice must be given to the District Office of the Oil Conservation Commission and approval obtained before drilling or recompletion begins. If changes in the proposed plan are considered advisable, a copy of this notice showing such changes will be returned to the sender. Submit this notice in QUINTUPPLICATE. One copy will be returned following approval. See additional instructions in Rules and Regulations of the Commission.

LUBBOCK, TEXAS

FEBRUARY 24, 1955

(Place)

(Date)

OIL CONSERVATION COMMISSION  
SANTA FE, NEW MEXICO

Gentlemen:

You are hereby notified that it is our intention to commence the (Drilling) ~~(Recompletion)~~ of a well to be known as

**DEKALB AGRICULTURAL ASSOCIATION, INC.**

(Company or Operator)

**STATE # 1-25**

(Lease)

Well No. **1**

**E**

(Unit)

located **330** feet from the **West** line and **1650** feet from the

**North**

line of Section **25**, T. **10-S**, R. **26-E**, NMPM.

(GIVE LOCATION FROM SECTION LINE)

**Undesignated**

Pool,

**Chaves**

County

If State Land the Oil and Gas Lease is No. **E-198**

If patented land the owner is **Not**

Address

We propose to drill well with drilling equipment as follows: **Cable tools to total depth at approximately 800 feet.**

The status of plugging bond is **Posted**

Drilling Contractor **Western Drilling Company**  
**Lubbock, Texas**

We intend to complete this well in the **Queen Sand** formation at an approximate depth of **800** feet.

CASING PROGRAM

We propose to use the following strings of Casing and to cement them as indicated:

Size of Hole	Size of Casing	Weight per Foot	New or Second Hand	Depth	Sacks Cement
<b>11"</b>	<b>8-5/8"</b>	<b>32</b>	<b>New</b>	<b>500</b>	<b>Mudded</b>
<b>8"</b>	<b>5-1/2"</b>	<b>17</b>	<b>New</b>	<b>750</b>	<b>Cemented 50 Sacks</b>
					<i>See Below</i>

If changes in the above plans become advisable we will notify you immediately.

ADDITIONAL INFORMATION (If recompletion give full details of proposed plan of work.) **1. Should operator encounter difficulty in drilling cable tool hole**

**through water zone sufficient surface pipe will be run and circulate cement to surface.**

**2. In the event one string is run operator will circulate to surface.**

**3. Operator will plug well in conformance to Commission rules.**

Approved....., 19.....  
Except as follows:

Sincerely yours,

**DEKALB AGRICULTURAL ASSN., INC.**

(Company or Operator)

By *[Signature]*

Position **Production Supt.**

Send Communications regarding well to

Name **DEKALB AGRICULTURAL ASSN., INC.**

Address **306 Lubbock National Building**

**Lubbock, Texas**

OIL CONSERVATION COMMISSION

By *[Signature]*

Title

Company DeKalb Agricultural Association

Lease State # 1-25 Well No. 1

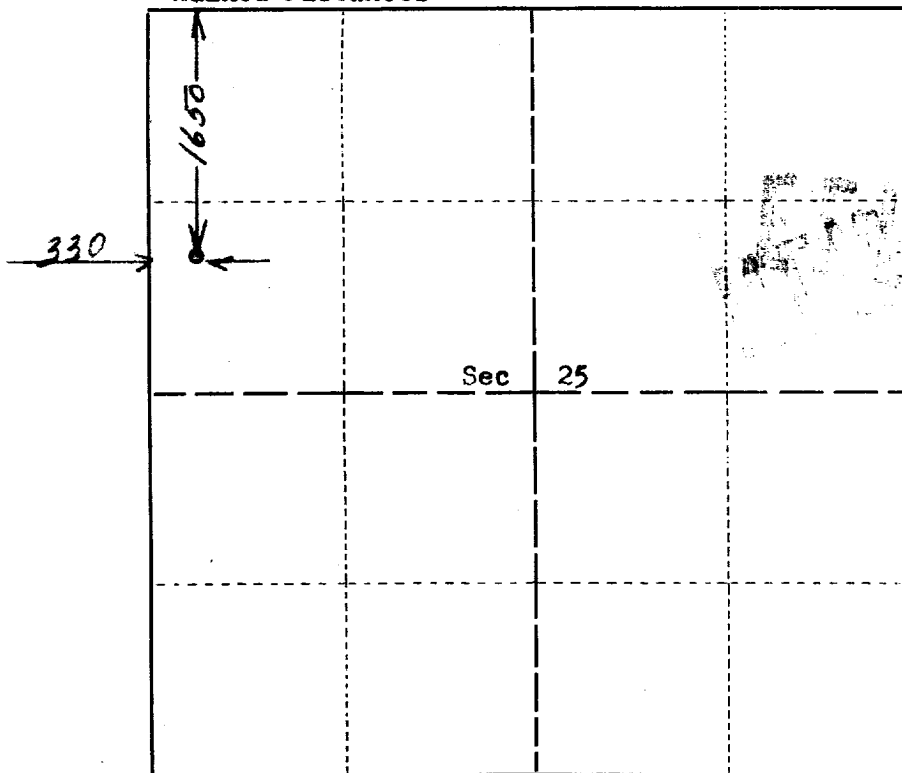
Sec. 25 T. 10 S., R. 26 E., N.M.P.M.

Location NW<sup>1</sup>SW<sup>1</sup>NW<sup>1</sup> (1650' from North Line & 330' from West Line)

County Chaves,

New Mexico

Chained Distances



Scale 4" = 1 mile.

This is to certify that the above plat was prepared from field notes of actual surveys made by me or under my supervision and that the same are true and correct to the best of my knowledge and belief.

Seal:

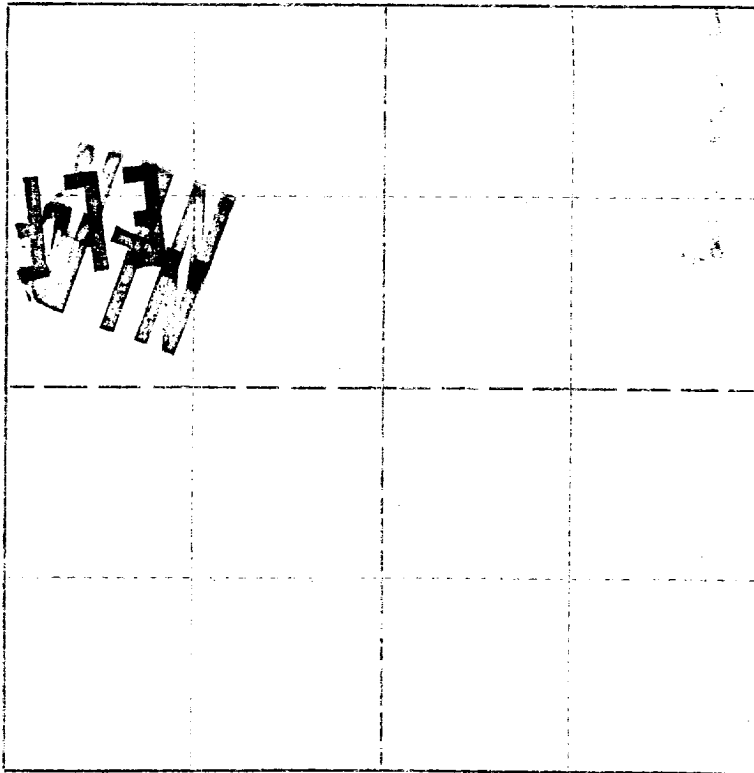
Artesia, New Mexico

John A. Matheis  
Registered Professional  
Engineer and Land Surveyor.

Surveyed February 22, 1955

17523 Advocate Print

Company \_\_\_\_\_  
 Please \_\_\_\_\_  
 Sec. \_\_\_\_\_  
 Location \_\_\_\_\_  
 County \_\_\_\_\_  
 New Mexico



Scale 4" = 1 mile

This is to certify that the above plat was prepared from field notes of actual surveys made by me or under my supervision and that the same are true and correct to the best of my knowledge and belief.

Registered Professional  
 Engineer and Land Surveyor

Seal:  
 Artesia, New Mexico

Surveyed \_\_\_\_\_, 19\_\_\_\_

Test Advocate Print

N  
 |